

STORM WATER DRAIN NO. 21

CITY OF WICHITA, KANSAS

DEPARTMENT OF ENGINEERING

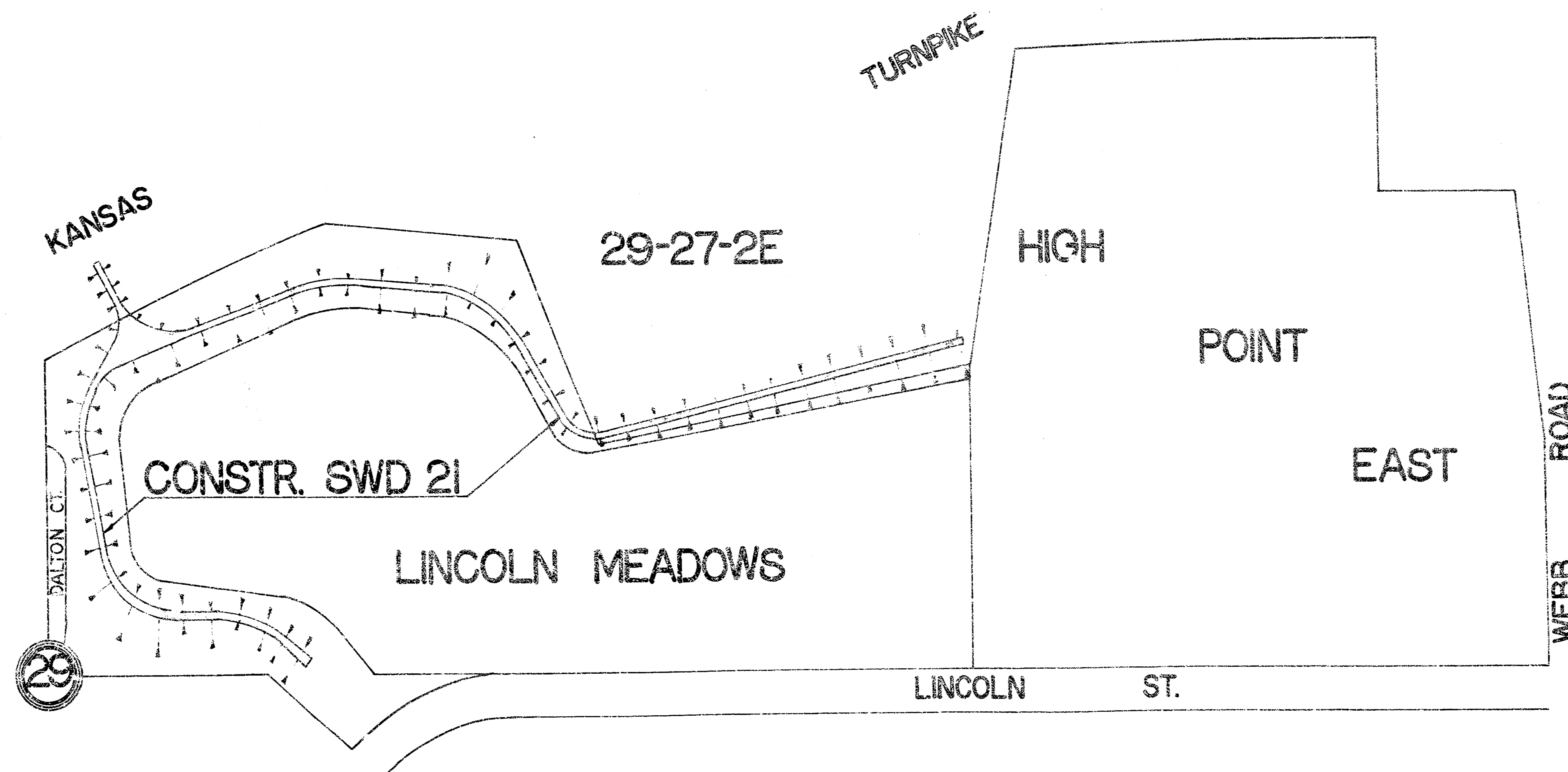
R.W. BRUGGEMAN, DIRECTOR OF ENGINEERING / CITY ENGINEER

DATE _____

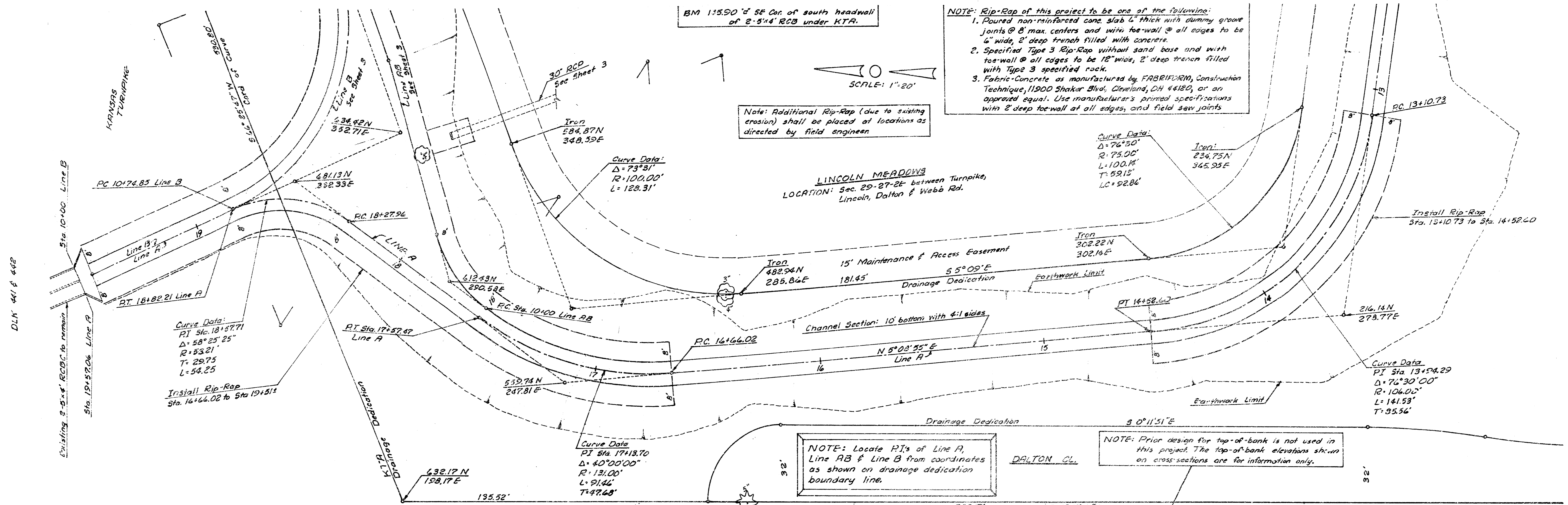
PROJECT NO. 468-76-245-80172-000-000-000 /

GENERAL NOTES

1. CONTRACTOR SHALL BE RESPONSIBLE FOR OBTAINING HIGHWAY PERMIT FROM KANSAS TURNPIKE AUTHORITY FOR CONSTRUCTION WITHIN K.T.A. RIGHT-OF-WAY.
2. FIELD ENGINEER SHALL TAKE CROSS-SECTIONS BEFORE AND AFTER CONSTRUCTION. THESE SECTIONS WILL BE USED TO DETERMINE FINAL PAY QUANTITIES FOR EARTHWORK.



THE CONTRACTOR SHALL BE RESPONSIBLE FOR PRESERVING EXISTING UTILITIES. THE CONTRACTOR SHALL BE RESPONSIBLE FOR OBTAINING NECESSARY PERMITS FROM THE KANSAS TURNPIKE AUTHORITY. THE CONTRACTOR SHALL BE RESPONSIBLE FOR OBTAINING NECESSARY PERMITS FROM THE KANSAS TURNPIKE AUTHORITY. THE CONTRACTOR SHALL BE RESPONSIBLE FOR OBTAINING NECESSARY PERMITS FROM THE KANSAS TURNPIKE AUTHORITY.



BM 11590 4 56 Cor of south headwall of 2'-5'x4' RCB under KTA.

NOTE: Rip-Rap of this project to be one of the following:
 1. Poured non-reinforced conc. slab 4" thick with dummy groove joints @ 8' max. centers and with toe-wall @ all edges to be 4" wide, 2' deep trench filled with concrete.
 2. Specified Type 3 Rip-Rap without sand base and with toe-wall @ all edges to be 12" wide, 2' deep trench filled with Type 3 specified rock.
 3. Fabric Concrete as manufactured by FABRIFORM, Construction Technique, 11900 Shaker Blvd, Cleveland, OH 44180, or an approved equal. Use manufacturer's printed specifications with 2' deep toe-wall at all edges, and field saw joints.

Note: Additional Rip-Rap (due to existing erosion) shall be placed at locations as directed by field engineer.

LINCOLN MEADOWS
 LOCATION: Sec. 29-27-24 between Turnpike, Lincoln, Dalton & Webb Rd.

Curve Data:
 Δ = 74° 50'
 R = 75.00'
 L = 100.18'
 T = 59.12'
 LC = 92.84'

Iron:
 303.22N
 302.14E

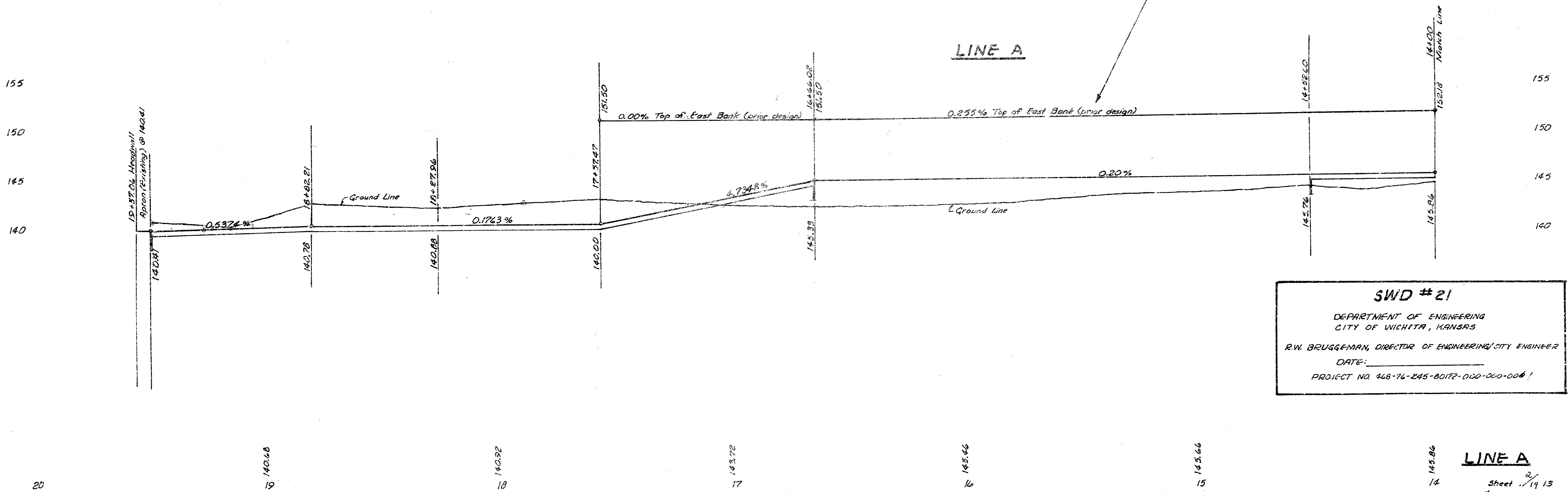
Curve Data:
 PI Sta. 18+57.71
 Δ = 58° 25' 25"
 R = 53.21'
 T = 29.75'
 L = 54.25'

Install Rip-Rap
 Sta. 16+66.02 to Sta. 19+51'

Curve Data:
 PI Sta. 17+13.70
 Δ = 40° 00' 00"
 R = 131.00'
 L = 91.44'
 T = 47.68'

NOTE: Locate R.I.'s of Line A, Line AB & Line B from coordinates as shown on drainage dedication boundary line.

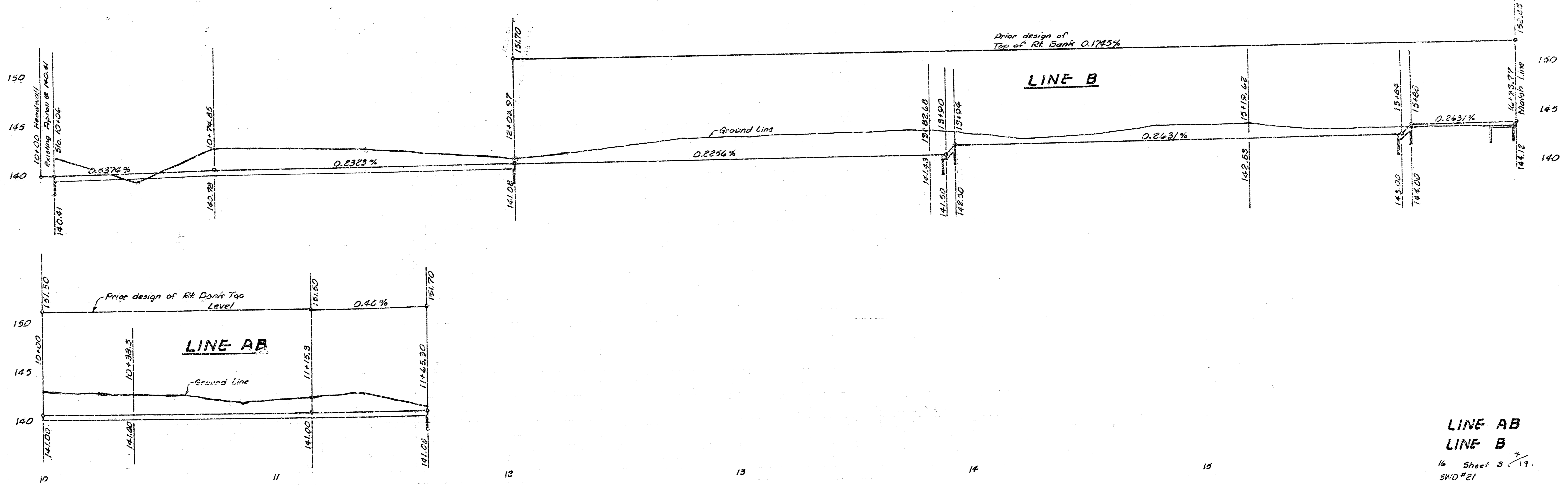
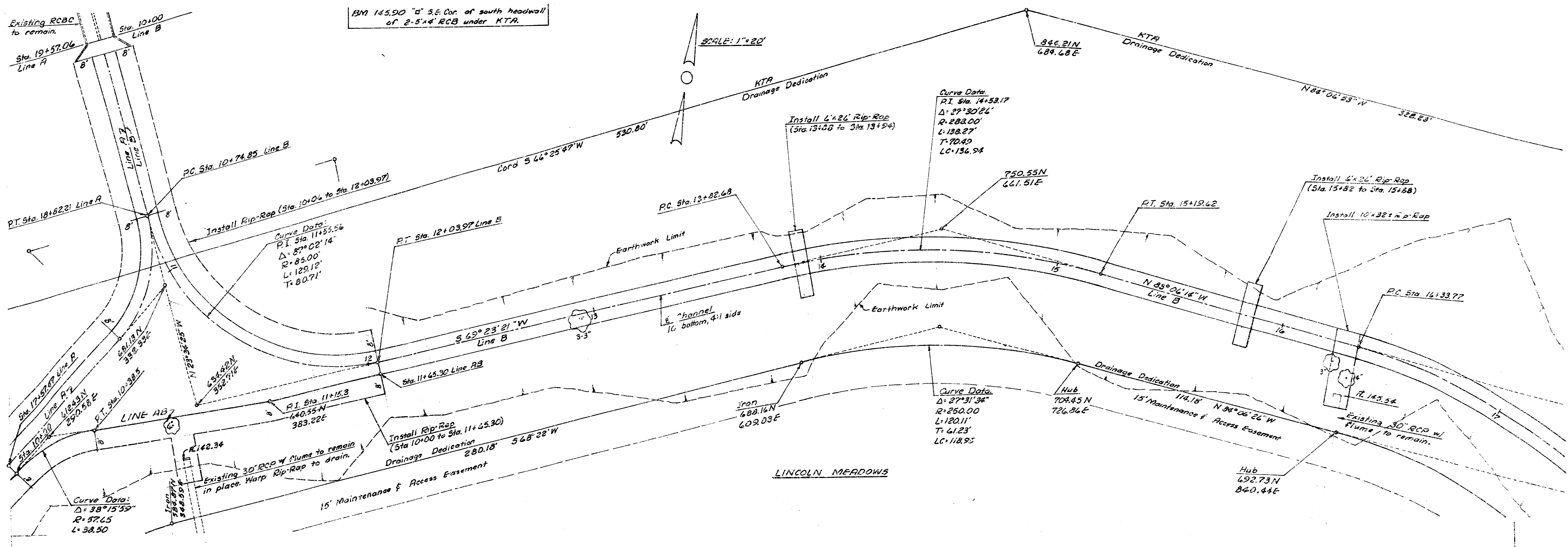
NOTE: Prior design for top-of-bank is not used in this project. The top-of-bank elevations shown on cross-sections are for information only.



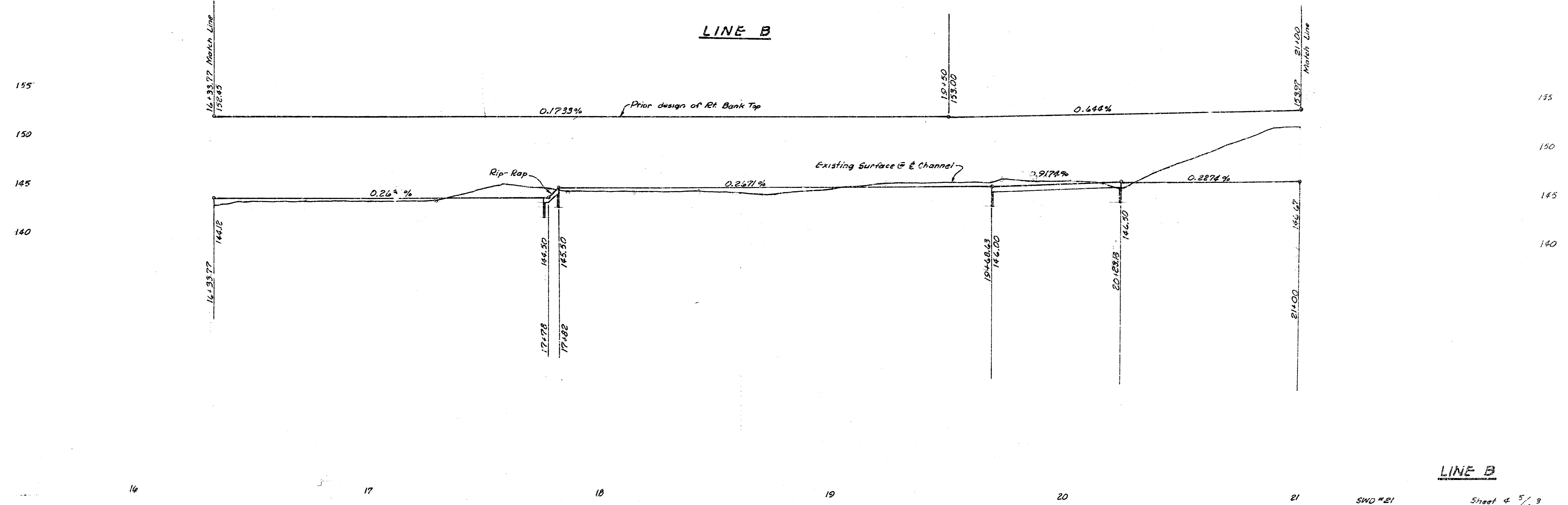
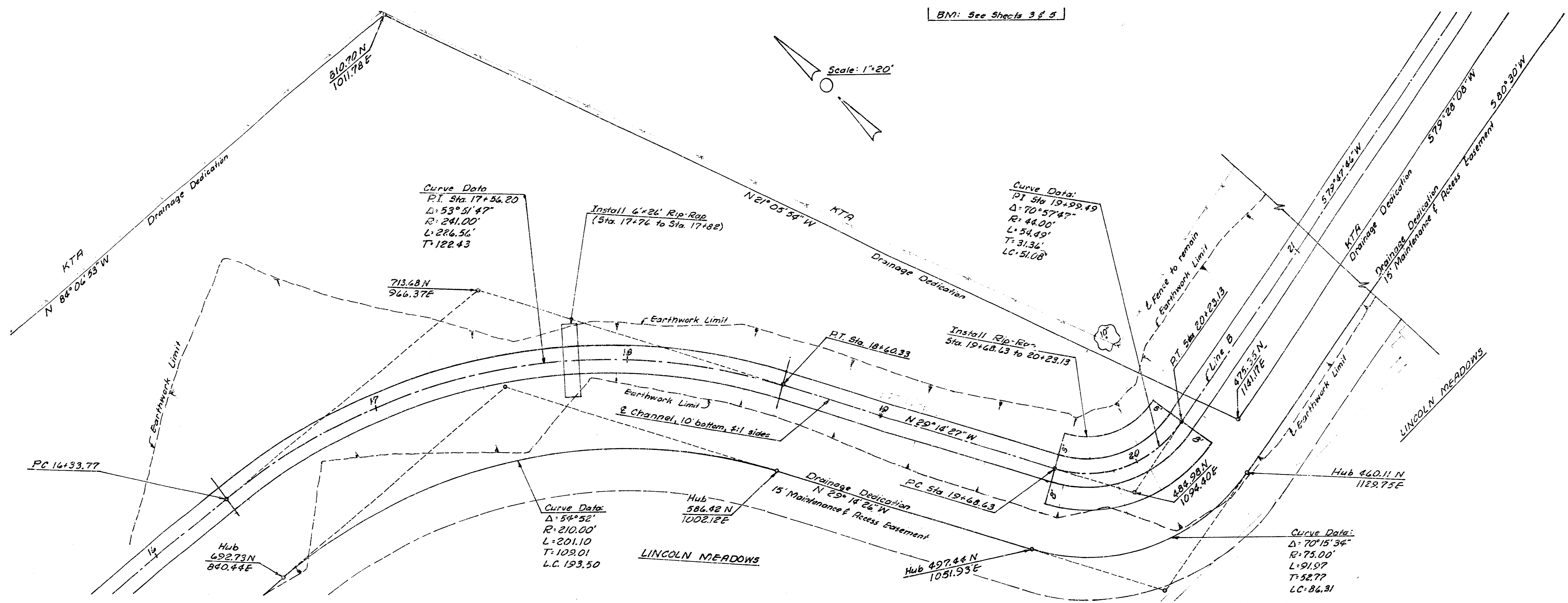
SWD # 21
 DEPARTMENT OF ENGINEERING
 CITY OF WICHITA, KANSAS
 R.W. BRUSSEMAN, DIRECTOR OF ENGINEERING/CITY ENGINEER
 DATE: _____
 PROJECT NO. 468-76-245-80172-000-000-006!

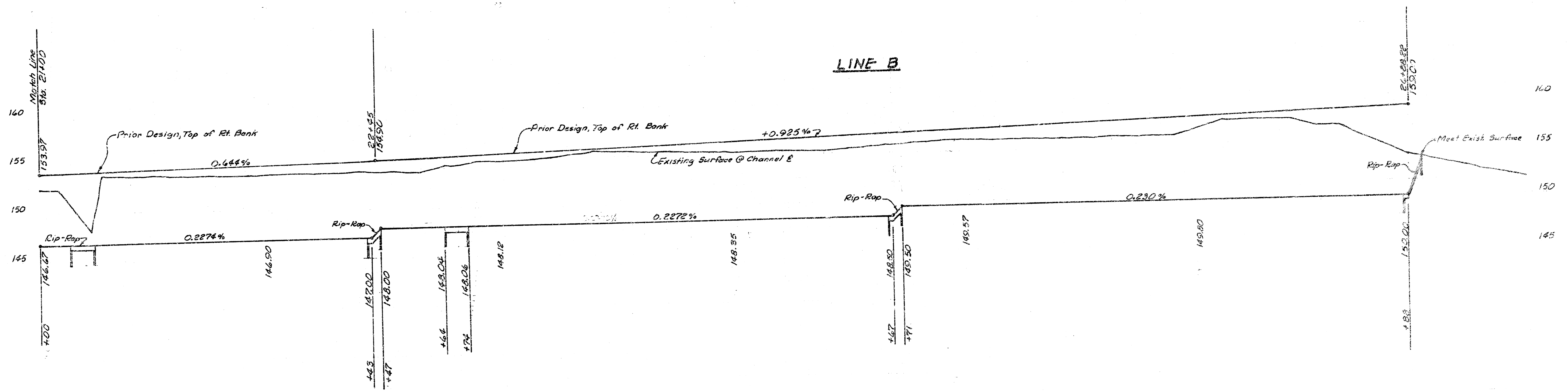
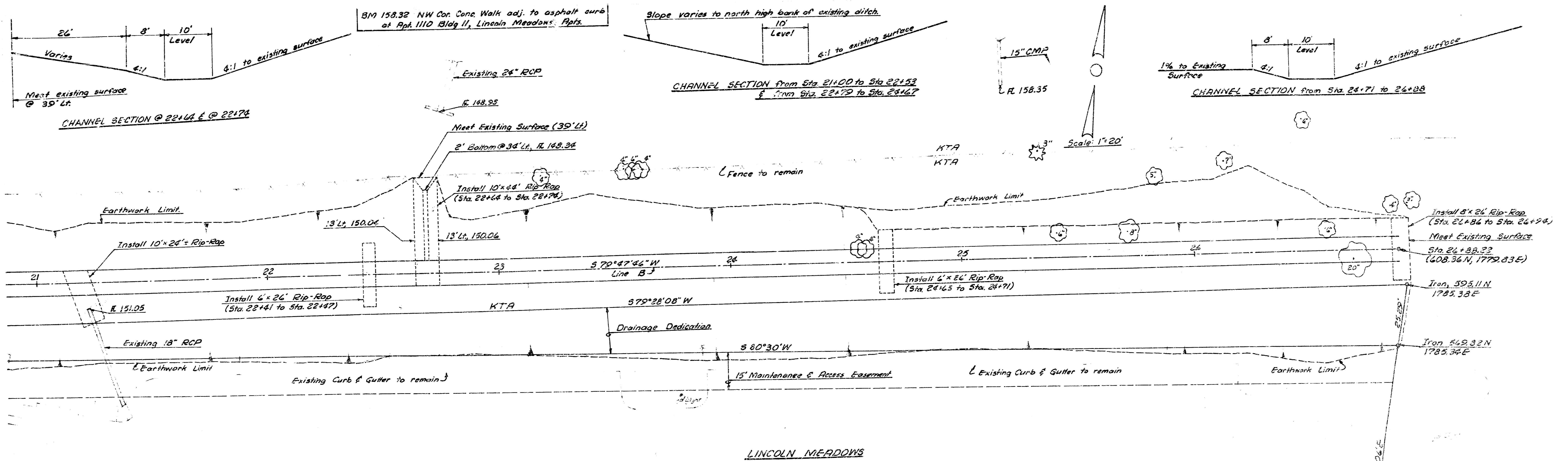
LINE A
 Sheet 19/13
 SWD # 21

FILMED FROM THE BEST AVAILABLE COPY



LINE AB
 LINE B
 1/6 Sheet 3 of 19
 SWD #21





21

22

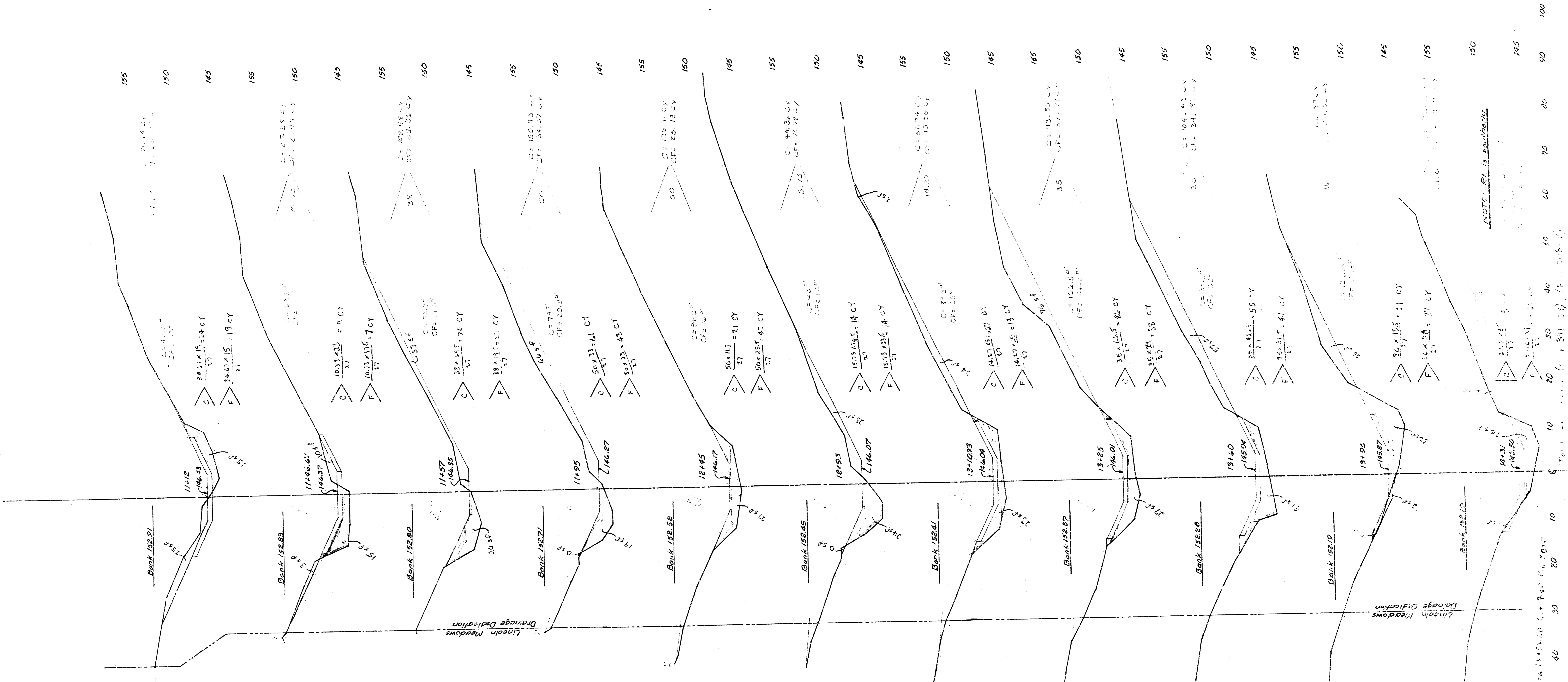
23

24

25

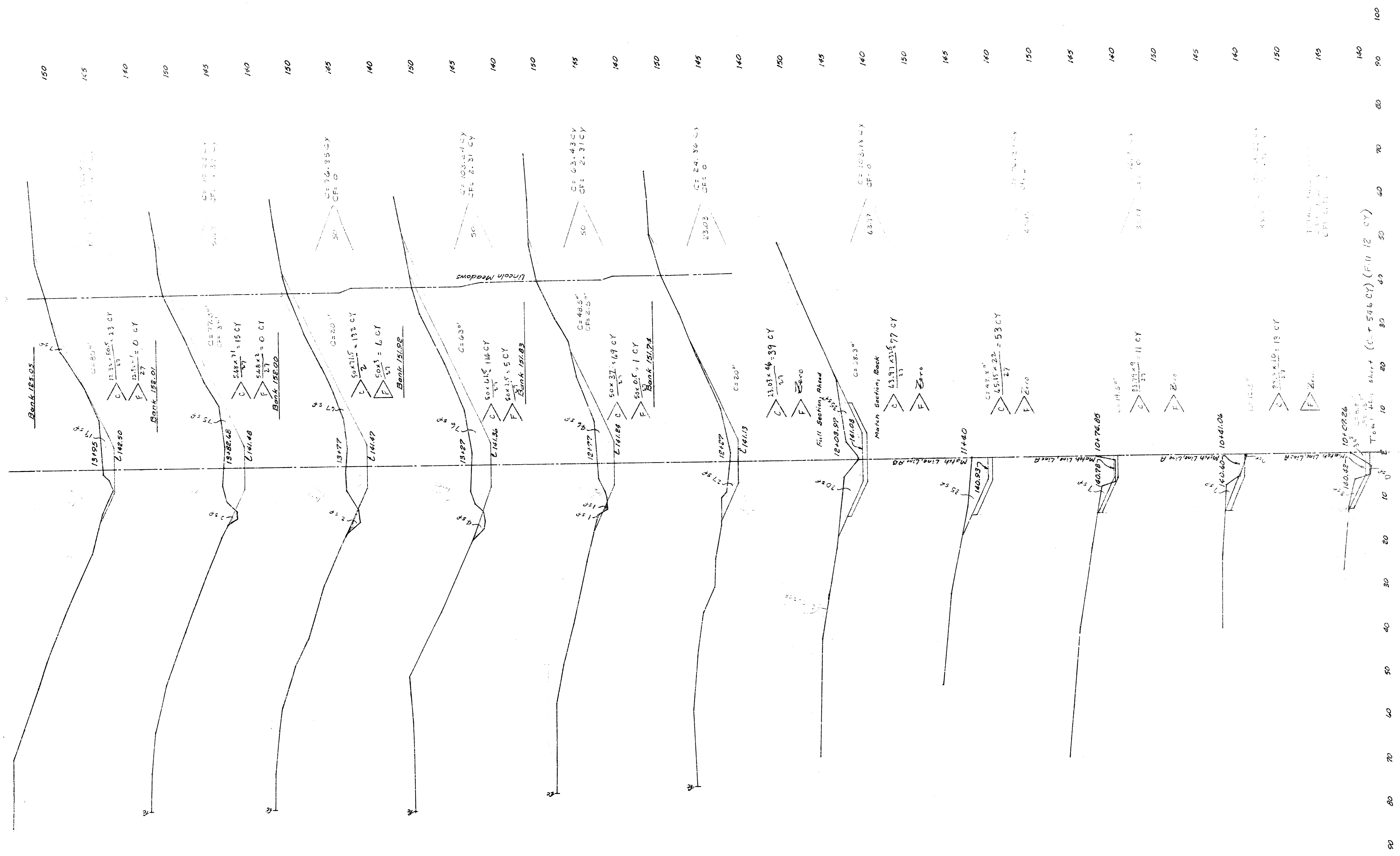
26

FILMED FROM THE BEST

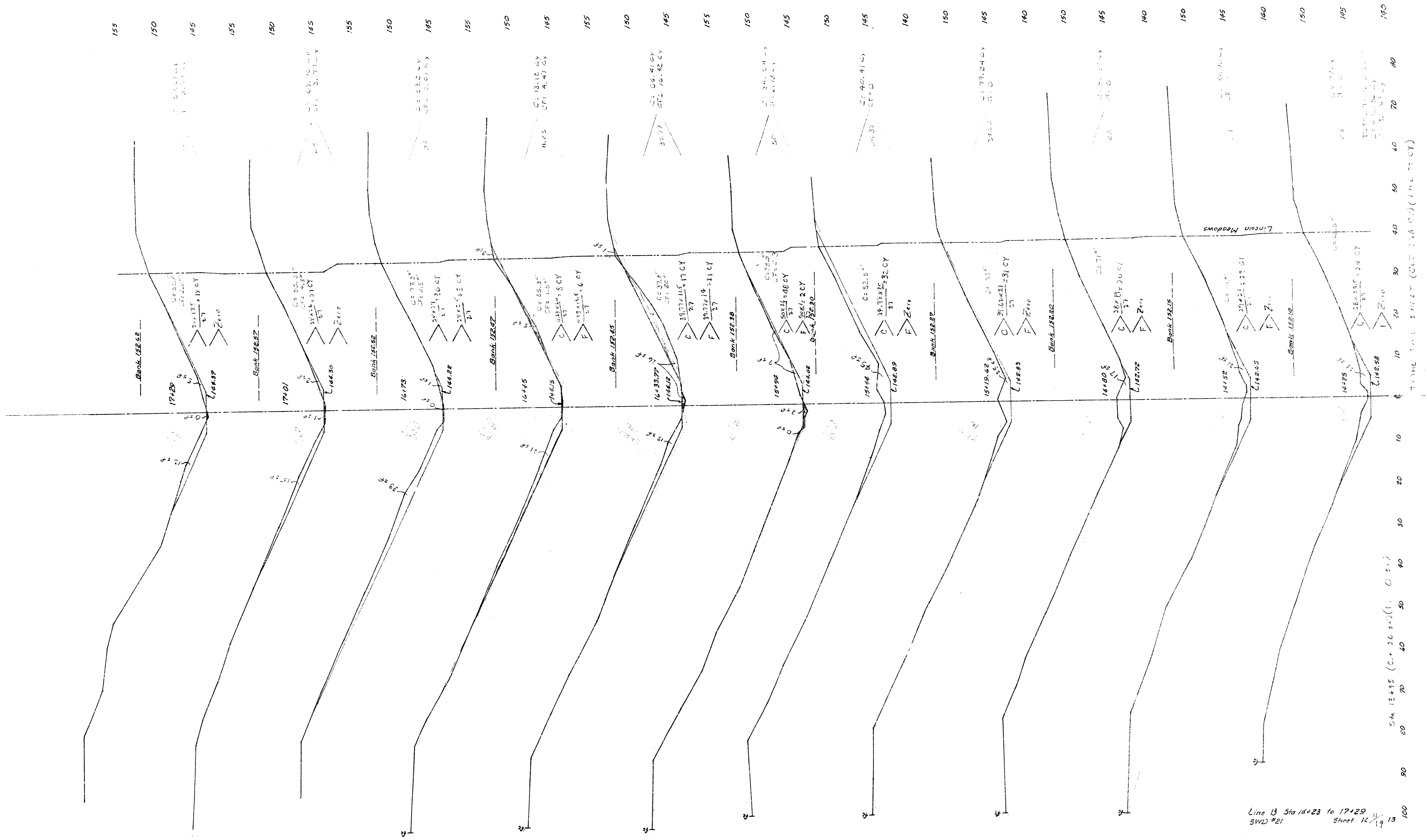


Line A Sta 11431 to Sta 11412
 SWD #21 Sheet 19

FILED FROM THE BEST



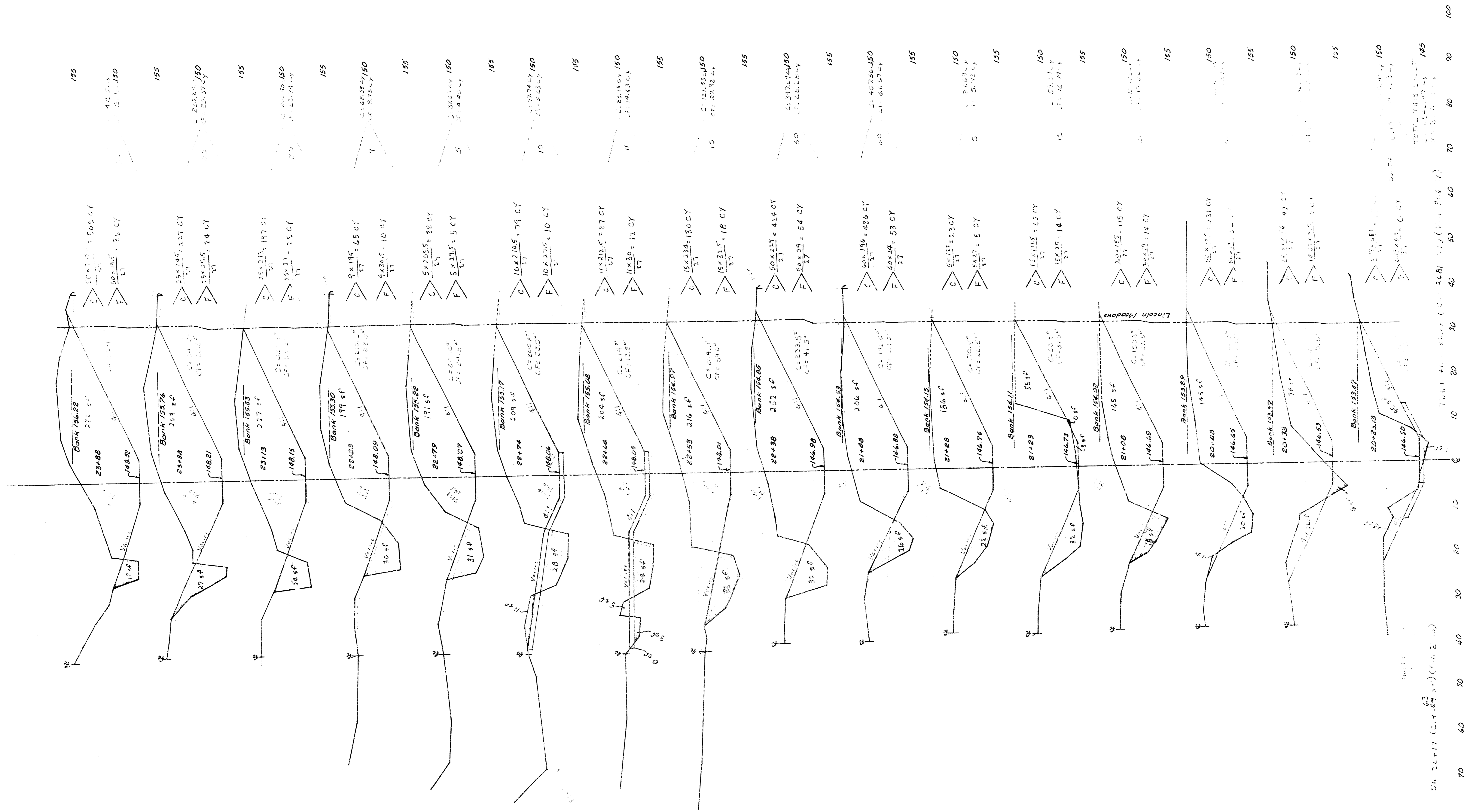
Line B Sta 10+07.25 to '10'09
 SWD #21 Sheet 19'3



Line B Sta 14+23 to 17+29
 SWD #21 Sheet 12 of 13

Sta 13+15 (C + 26.54) (F - 0.51)

TOTAL CUT 276.00 (LINE 11 CY)



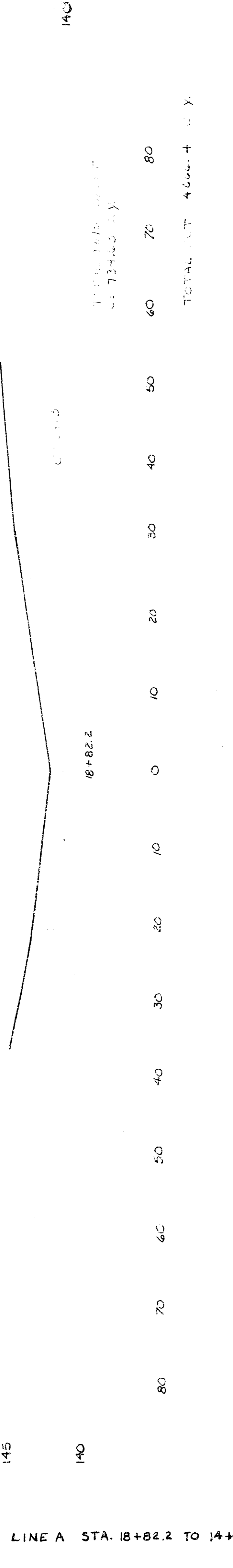
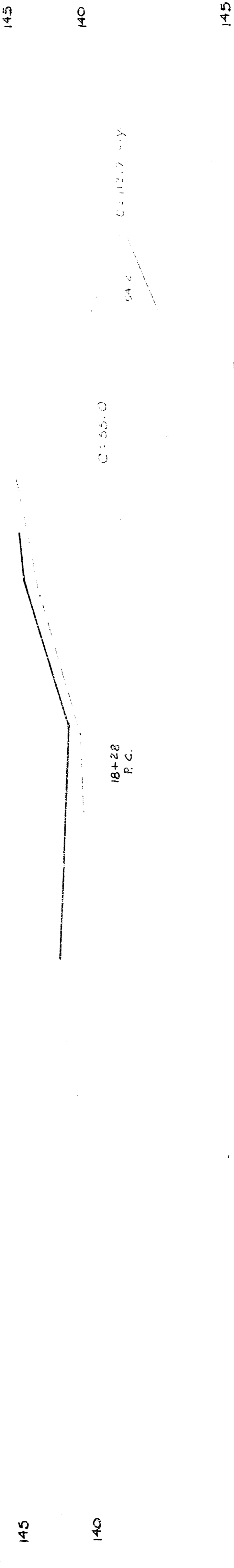
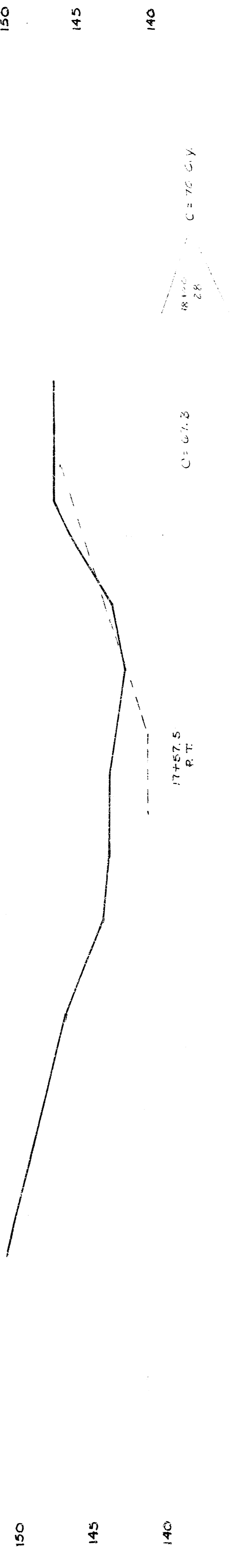
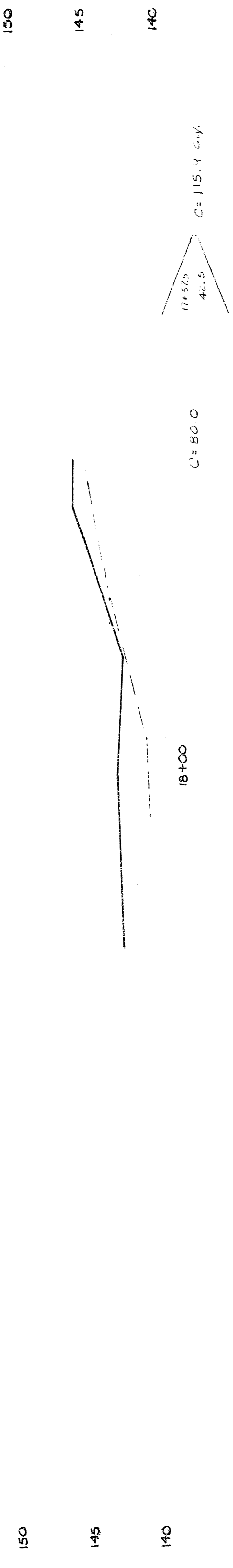
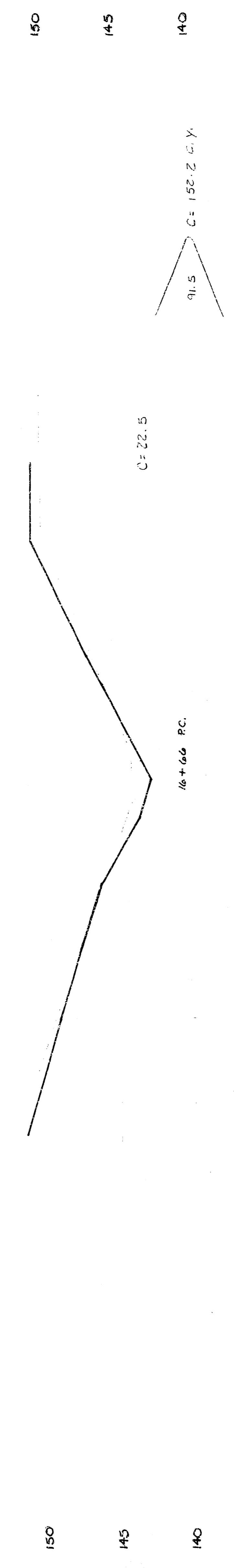
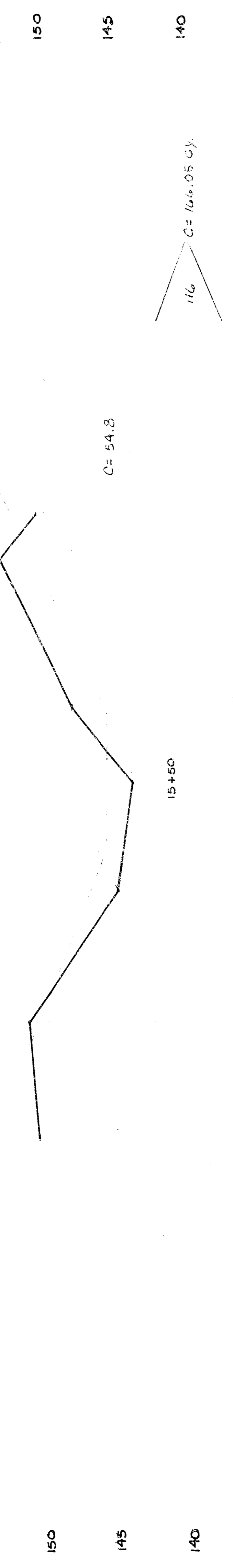
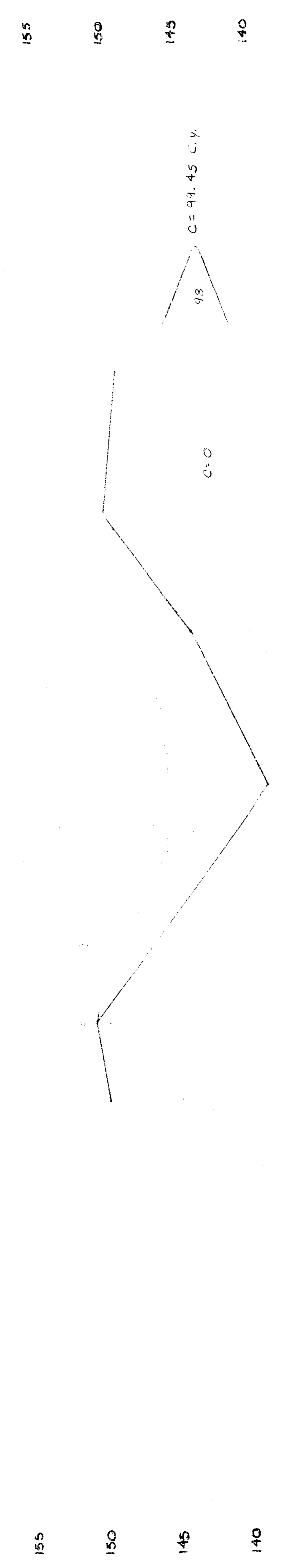
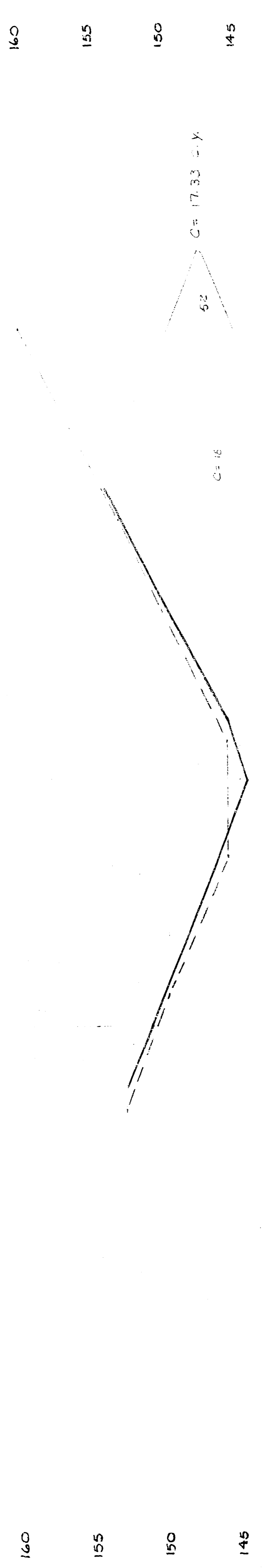
Line B Sta 20+23.13 to Sta 23+21.3
 SWD #21 Sheet 16/19 13

Sta 20+17 (C) + 64 (S) = 23+21.13 (E) (16)

Total Area (C) = 2481 (16) (16) (17)

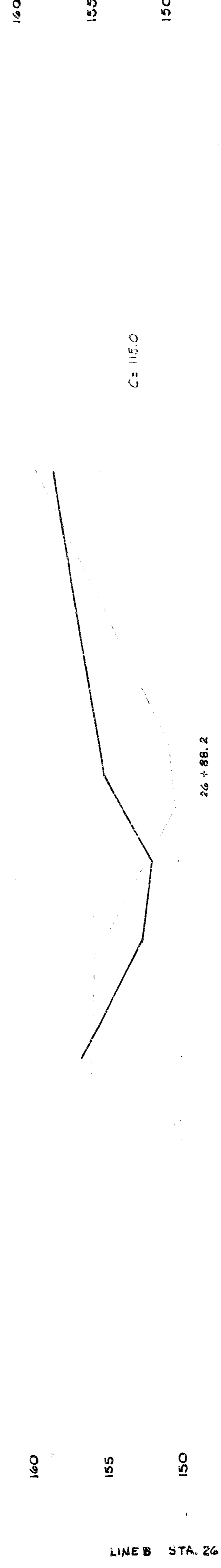
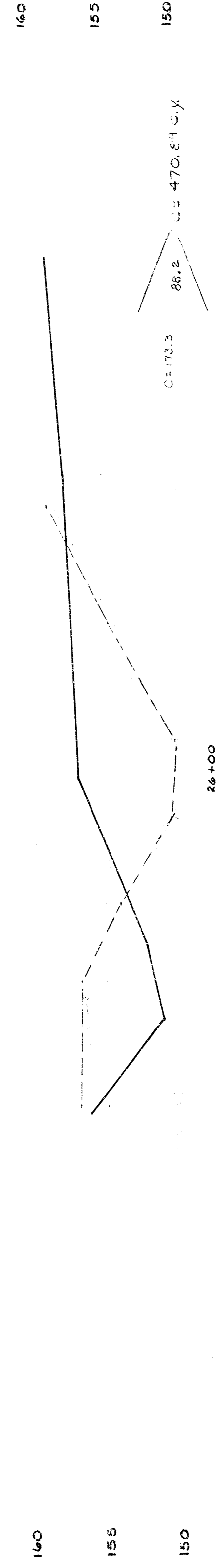
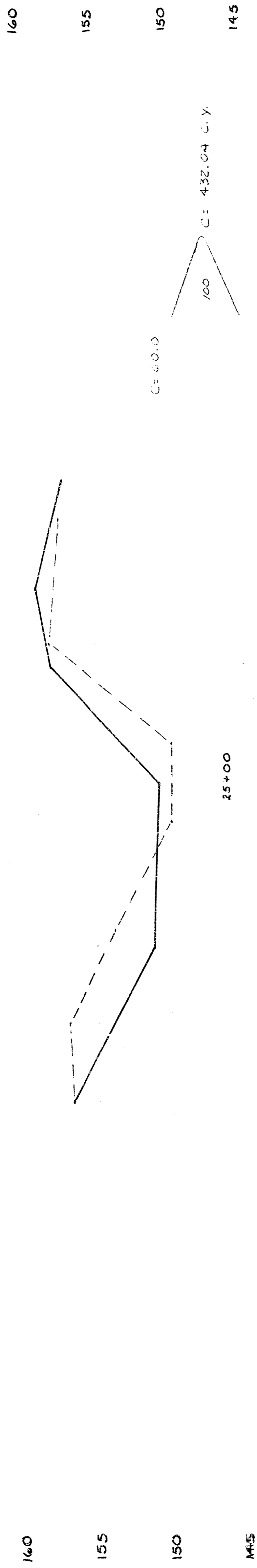
Total Volume (C) = 1485 (16) (17) (17)

100 90 80 70 60 50 40 30 20 10 0

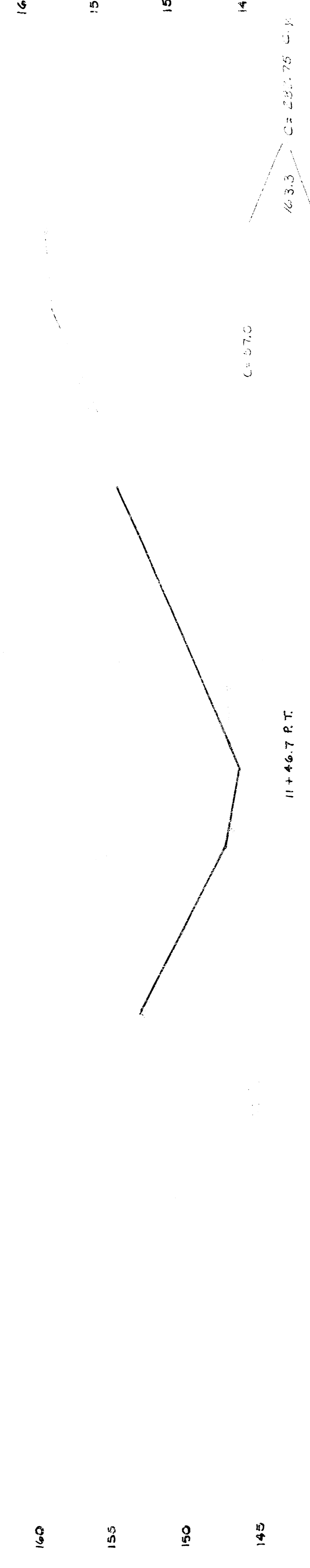
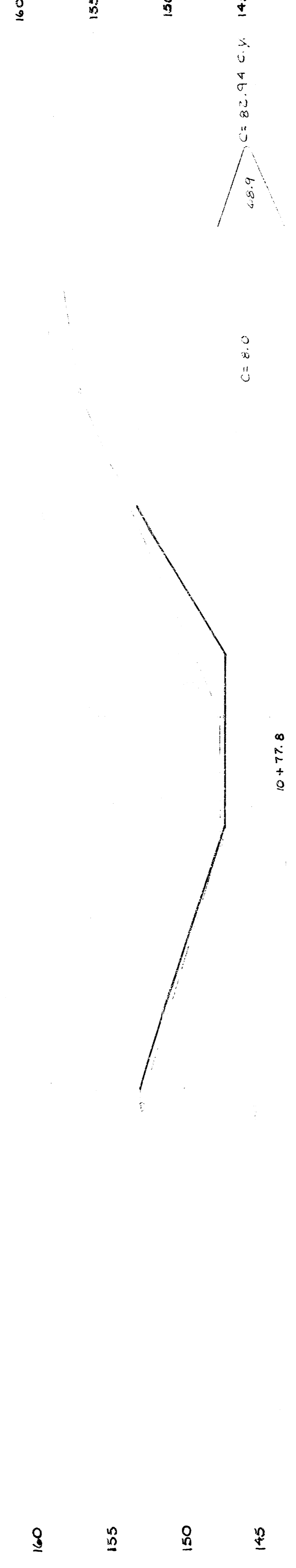


TOTAL CUT 466.4 C.Y.

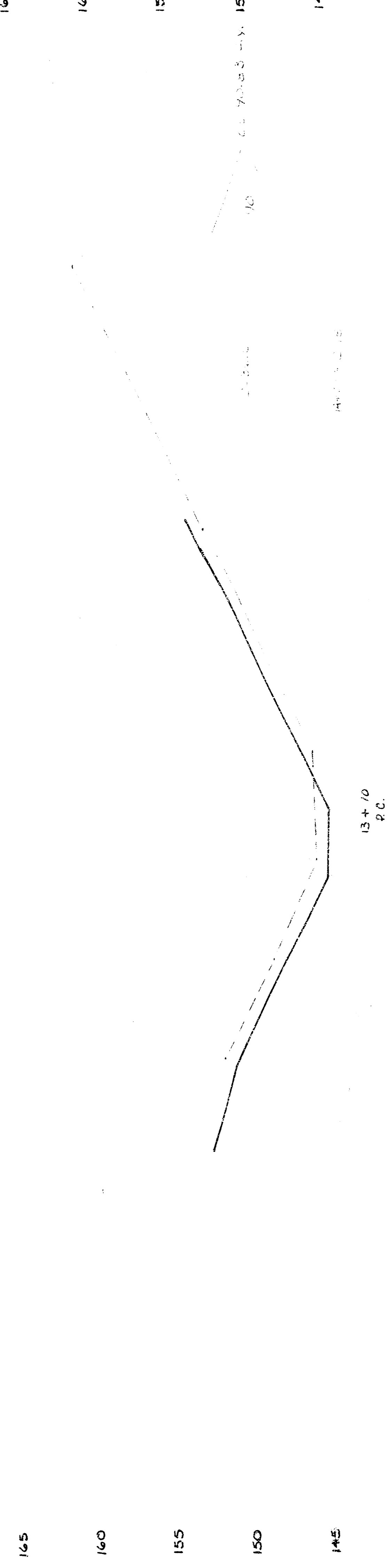
LINE A STA. 18+82.2 TO 14+00



LINE B STA. 26+88.2 TO 25+00



LINE A STA. 13+10 TO 10+77.8



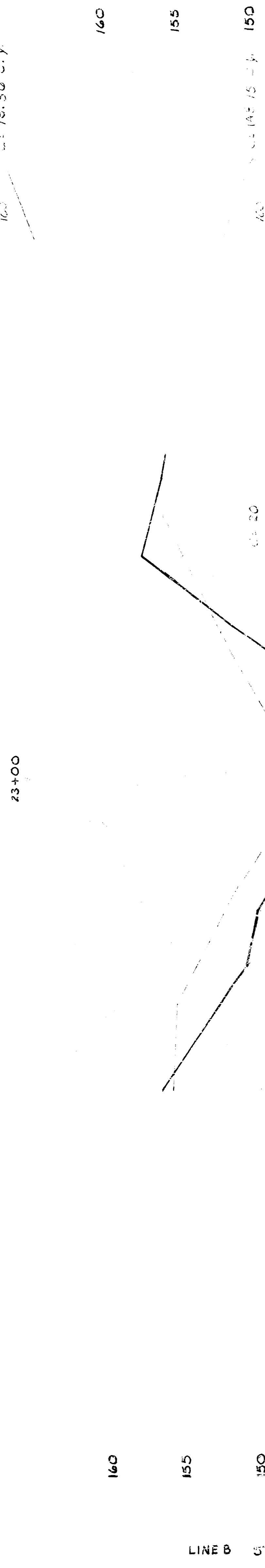
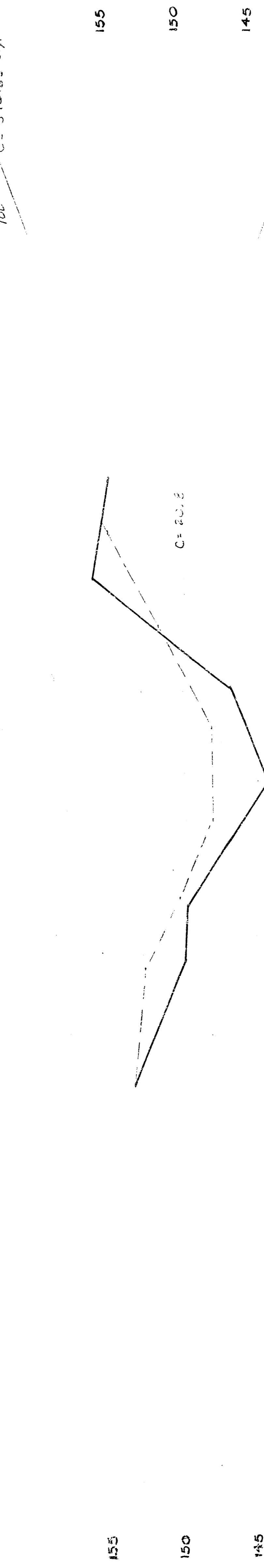
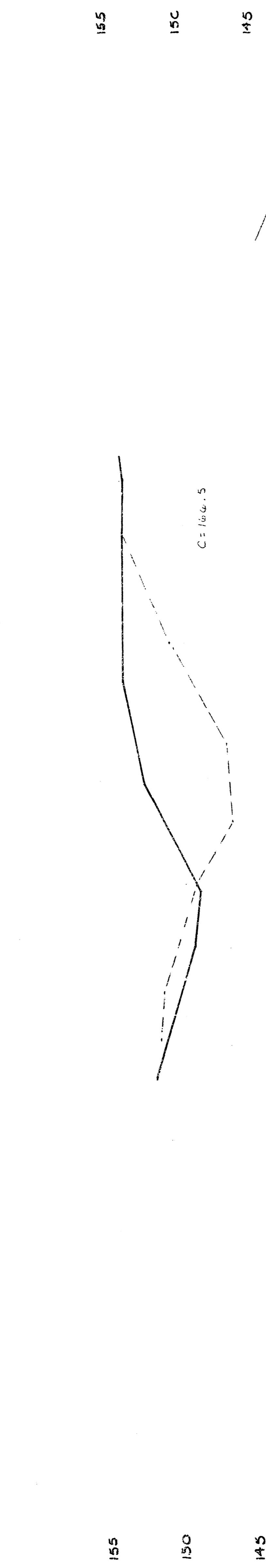
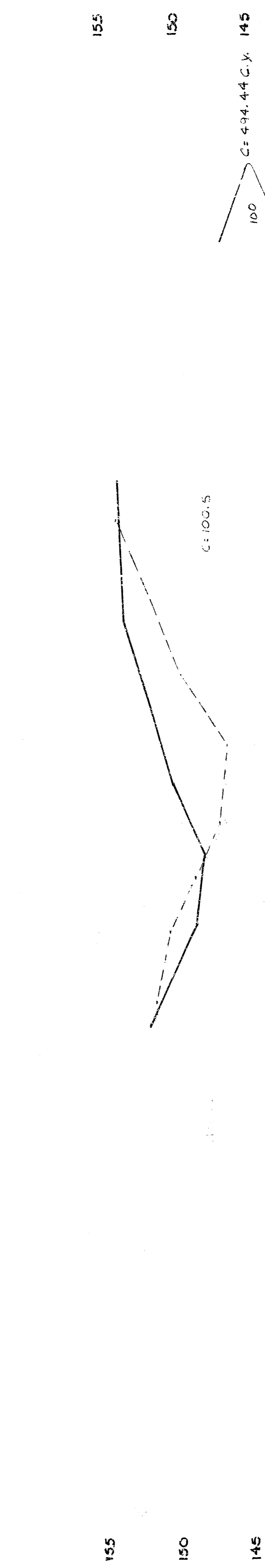
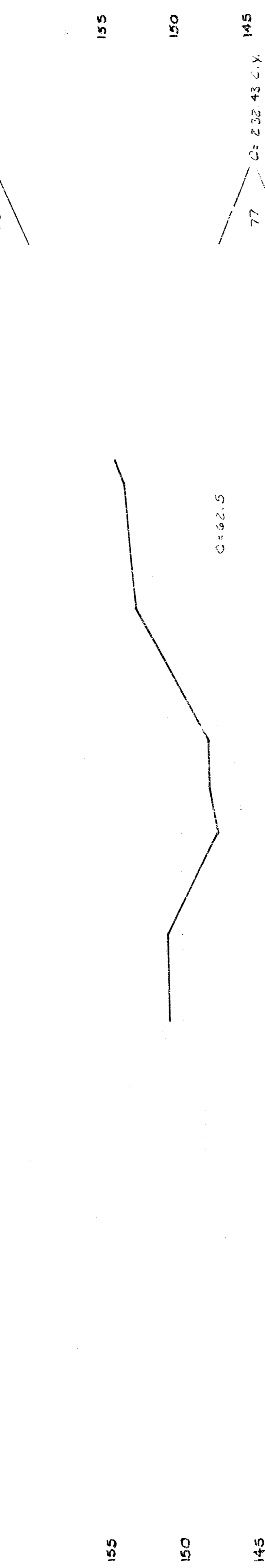
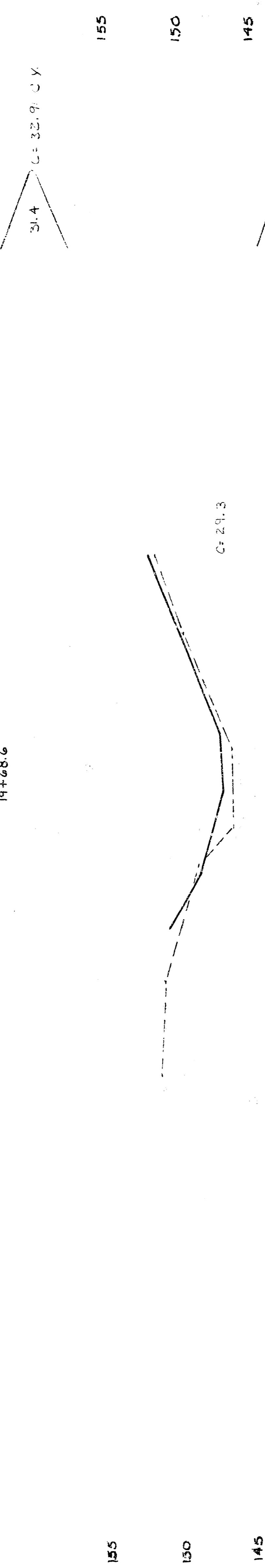
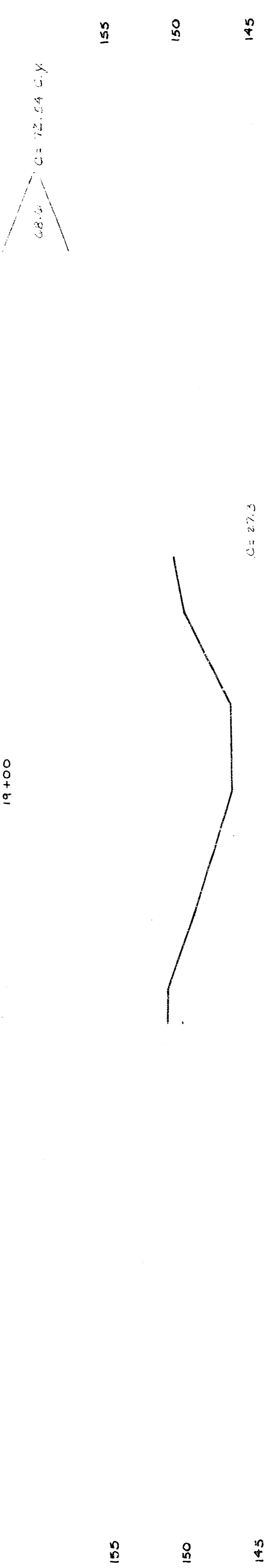
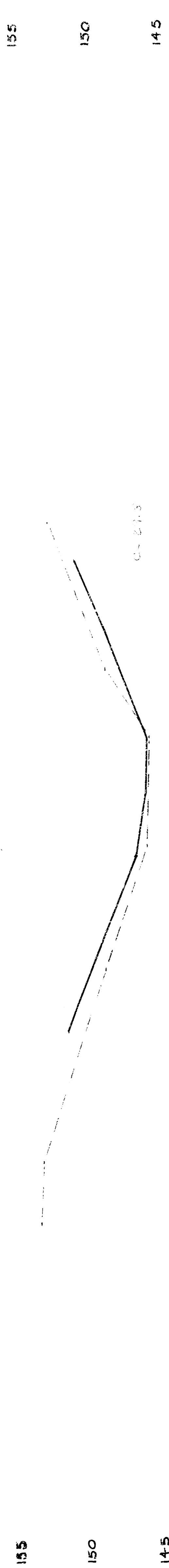
160
155
150
145

160
155
150
145

145

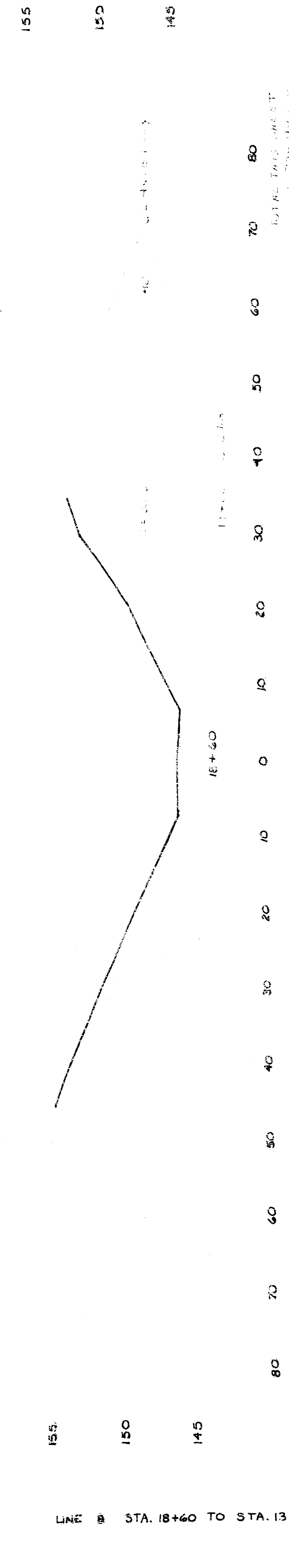
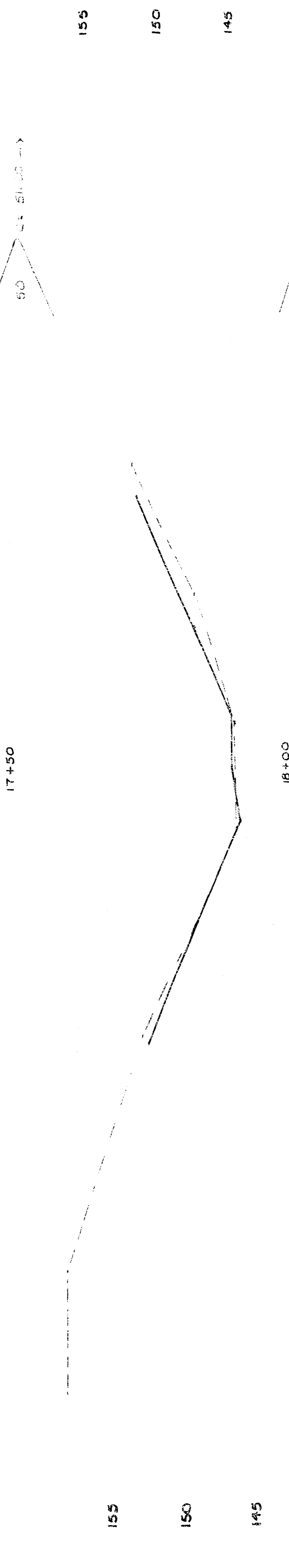
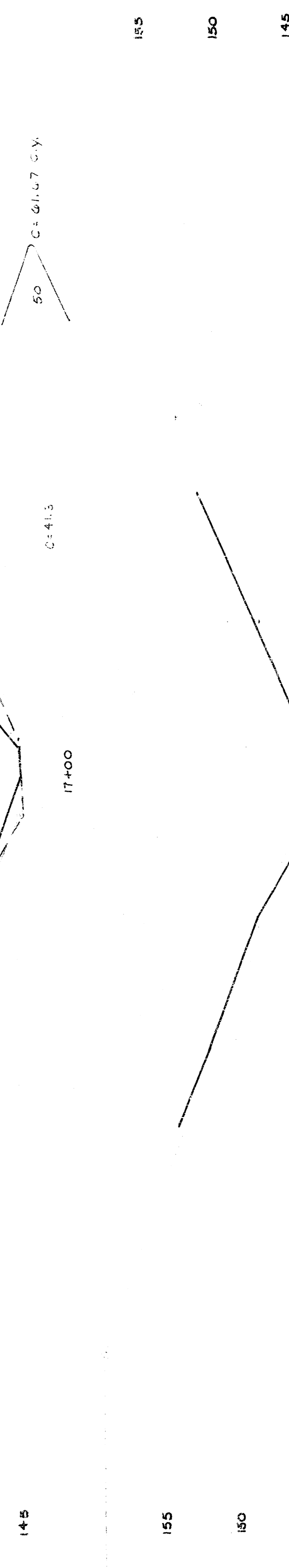
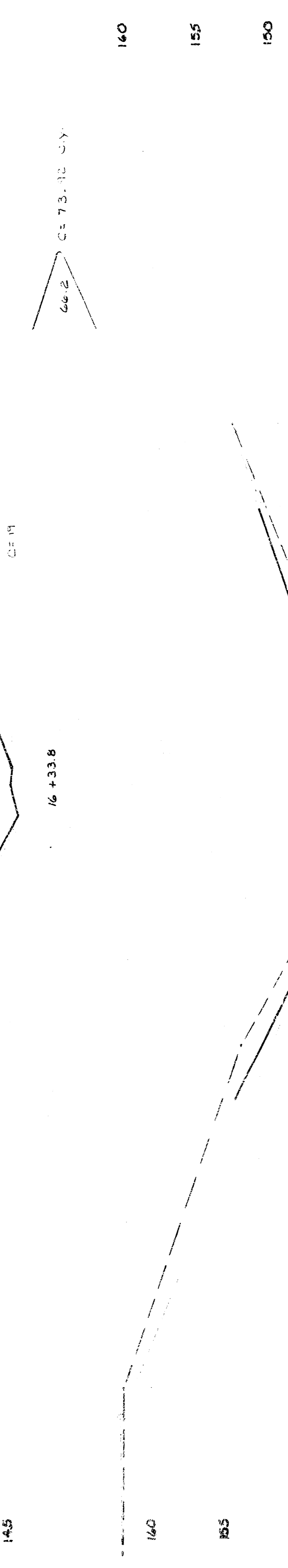
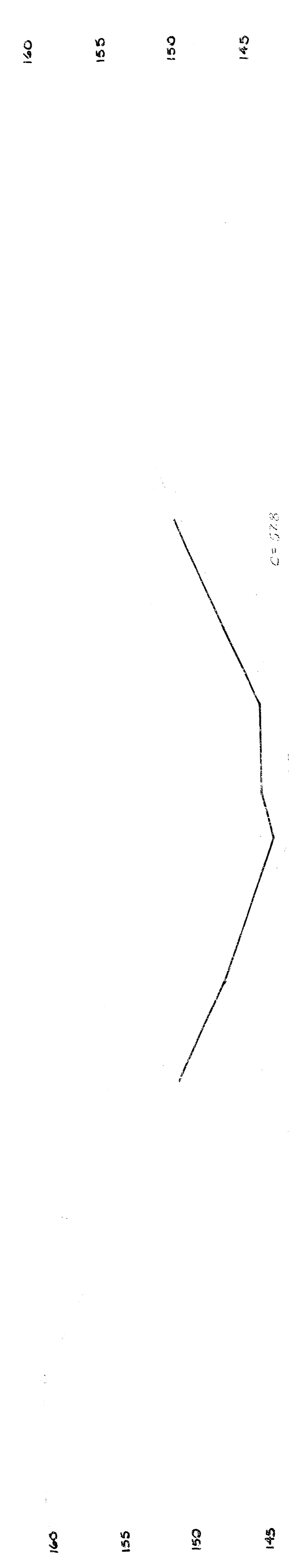
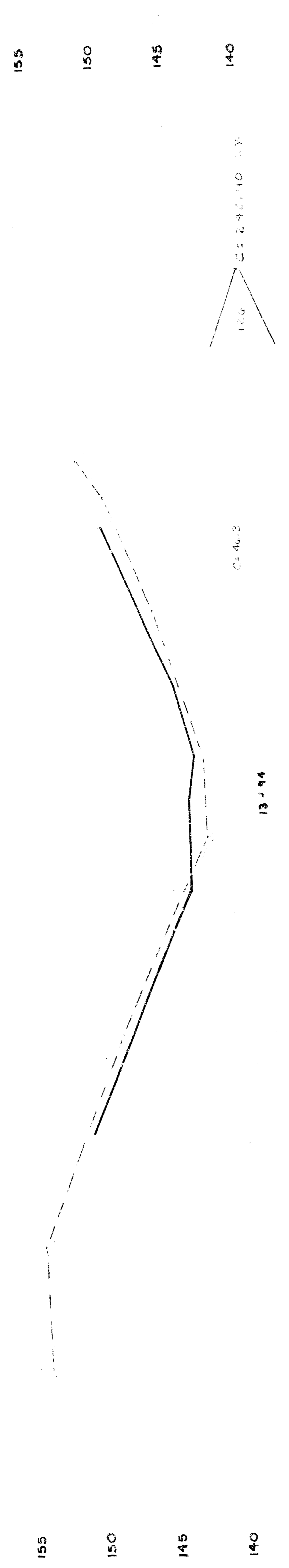
TOTAL THIS SHEET
C = 1337.49 C.Y.

16/19



LINE B STA. 24+00 TO STA. 19+00

TOTAL THICKNESS
C = 144.5



LINE B STA. 18+60 TO STA. 13+94

1/16/1935
137 258.17 G.Y.

