

CITY OF WICHITA, KANSAS

STORM WATER DRAIN NO. 42

PROJECT NO. 468-76-245-80915-000-000-001

ECHO HILLS
AN ADDITION TO WICHITA SEDGWICK COUNTY, KANSAS

BENCH MARKS

B.M. - City Standard Brass Cap, in conc., 25' North & 30' East of SW Corner, Sec. 7, T87S, R1W
MSL Elev. = 1345.30
City Elev. = 137.00

INDEX OF SHEETS	
1	TITLE SHEET
2-4	PLAN & PROFILES
5-7	CROSS SECTIONS

GENERAL NOTES

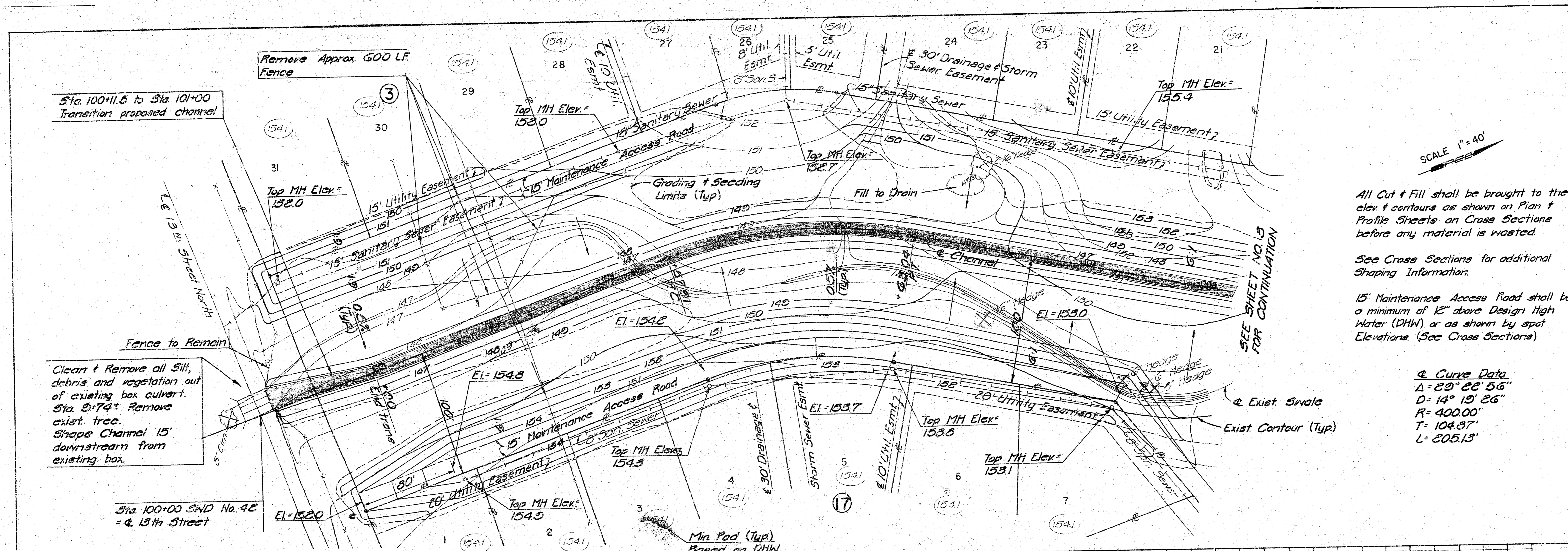
- FIELD ENGINEER SHALL TAKE TIES TO ALL IRONS AND THIMBLES WHICH MAY BE DESTROYED. FIELD ENGINEER SHALL REPLACE ALL IRONS AND THIMBLES WHICH ARE DESTROYED.
- ALL METAL PIPE SHALL BE HELICALLY CORRUGATED METAL PIPES FOR SIZES 21" IN DIAMETER (OR EQUIVALENT ARCH PIPE) OR SMALLER, AND FULLY PAVED CORRUGATED METAL PIPES FOR SIZES 24" IN DIAMETER (OR EQUIVALENT ARCH PIPE) OR LARGER.
- THE RIP-RAP ON THIS PROJECT SHALL BE TYPE 3. THE TYPE 3 RIP-RAP SHALL BE 12" RIP-RAP ON 6" SAND AND GRAVEL BEDDING. THE ROCK FOR RIP-RAP AND GRAVEL PROTECTION SHALL BE HARD, DENSE, DURABLE AND SHALL BE REASONABLY WELL GRADED. THE SIZE RANGE OF ROCK USED SHALL HAVE A MAXIMUM SIZE OF ONE CUBIC FOOT AND A MINIMUM SIZE OF 1 1/2 INCH. THE 6 INCH SAND AND GRAVEL BEDDING FOR RIP-RAP SHALL BE A CONTINUOUS LAYER OF SAND AND GRAVEL OR SAND AND CRUSHED ROCK REASONABLY WELL GRADED TO A MAXIMUM OF 1 1/2 INCHES IN SIZE.
- FOR ADDITIONAL LAYOUT INFORMATION SEE PLAT OF ECHO HILLS ADDITION.
- TREE REMOVAL SHALL BE LIMITED TO THOSE TREES MARKED ON THE PLANS OR AS DIRECTED BY THE ENGINEER.
- CONTRACTOR TO WASTE EXCESS EXCAVATION ON LOTS 21 THRU 31, BLOCK 3 TO AN ELEVATION NO GREATER THAN 1.5 FEET BELOW MINIMUM PAD ELEVATION SHOWN ON THE PLANS, AND ON LOTS 1 THRU 7, BLOCK 17 TO AN ELEVATION 0.5 FEET ABOVE ACCESS ROAD OR AS DIRECTED BY THE ENGINEER.
- AREAS AS SHOWN ON PLANS SHALL BE SEEDED ACCORDING TO CITY SPECIFICATIONS AND OTHER AREAS AS DIRECTED BY THE ENGINEER.
- REMOVAL OF EXISTING RIP-RAP SHALL NOT BE PAID FOR DIRECTLY BUT SHALL BE SUBSIDIARY TO "RIP-RAP (TYPE 3)".
- REMOVAL AND RESETTING OF EXISTING END SECTIONS SHALL BE SUBSIDIARY TO PIPE EXTENSIONS.



PROPOSED STORM WATER DRAIN IMPROVEMENTS

APRIL, 1980

No.	Revision	By	Date
CITY OF WICHITA, KANSAS			
TITLE SHEET			
STORM WATER DRAIN NO. 42 PROJ. NO. 468-76-245-80915-000-000-001			
PROFESSIONAL ENGINEERING CONSULTANTS, P.A.			
ENGINEERS WICHITA, KANSAS			
Designed by	CMB, CSB	Job No.	80030-4
Drawn by	GH	Date	
		Sht.	1 of 7



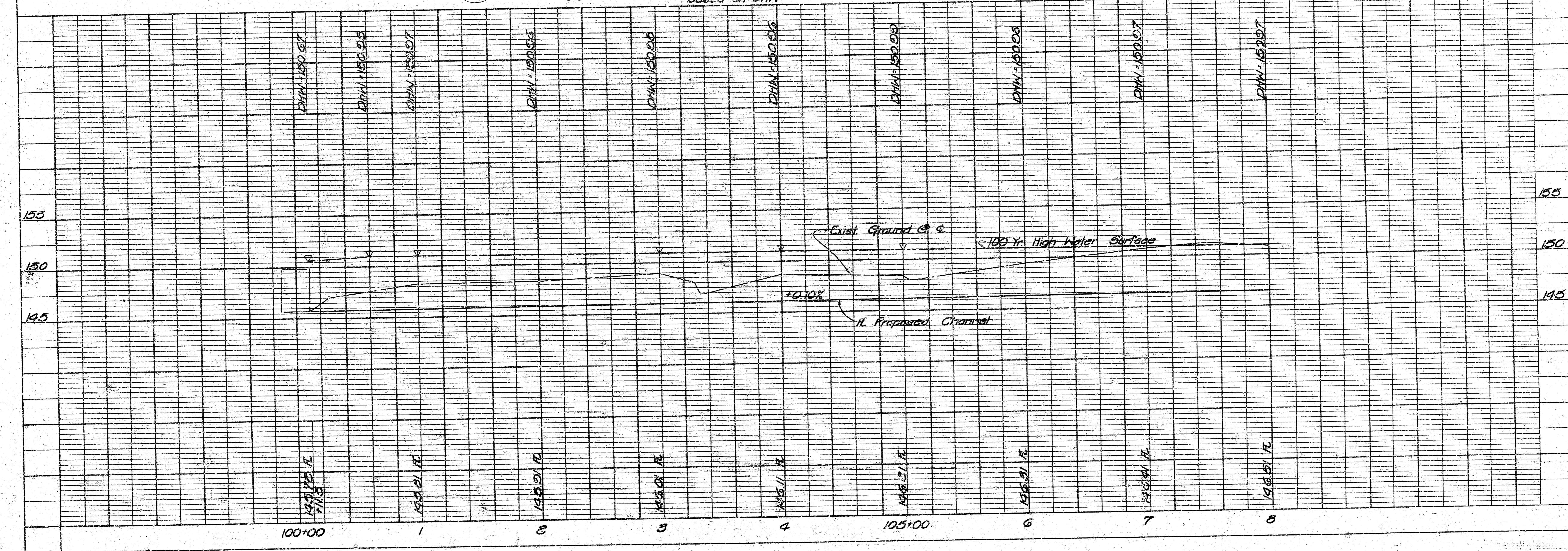
SCALE 1" = 40'

All Cut & Fill shall be brought to the elev & contours as shown on Plan & Profile Sheets on Cross Sections before any material is wasted.

See Cross Sections for additional Shaping Information.

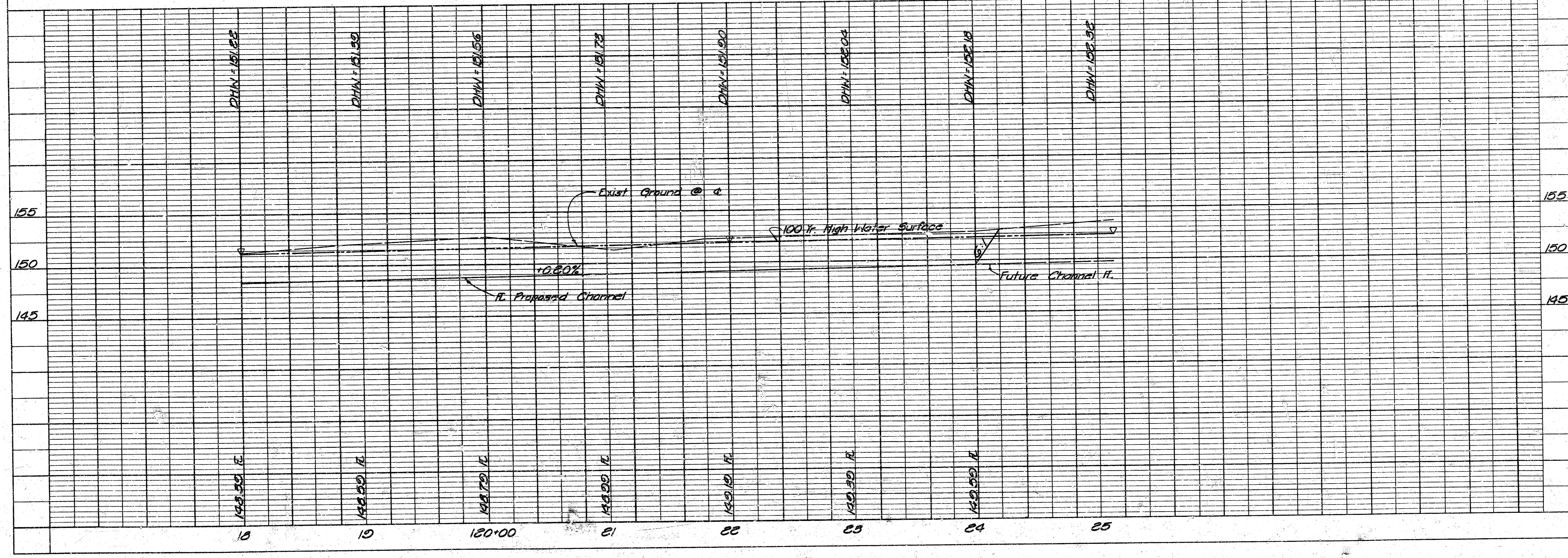
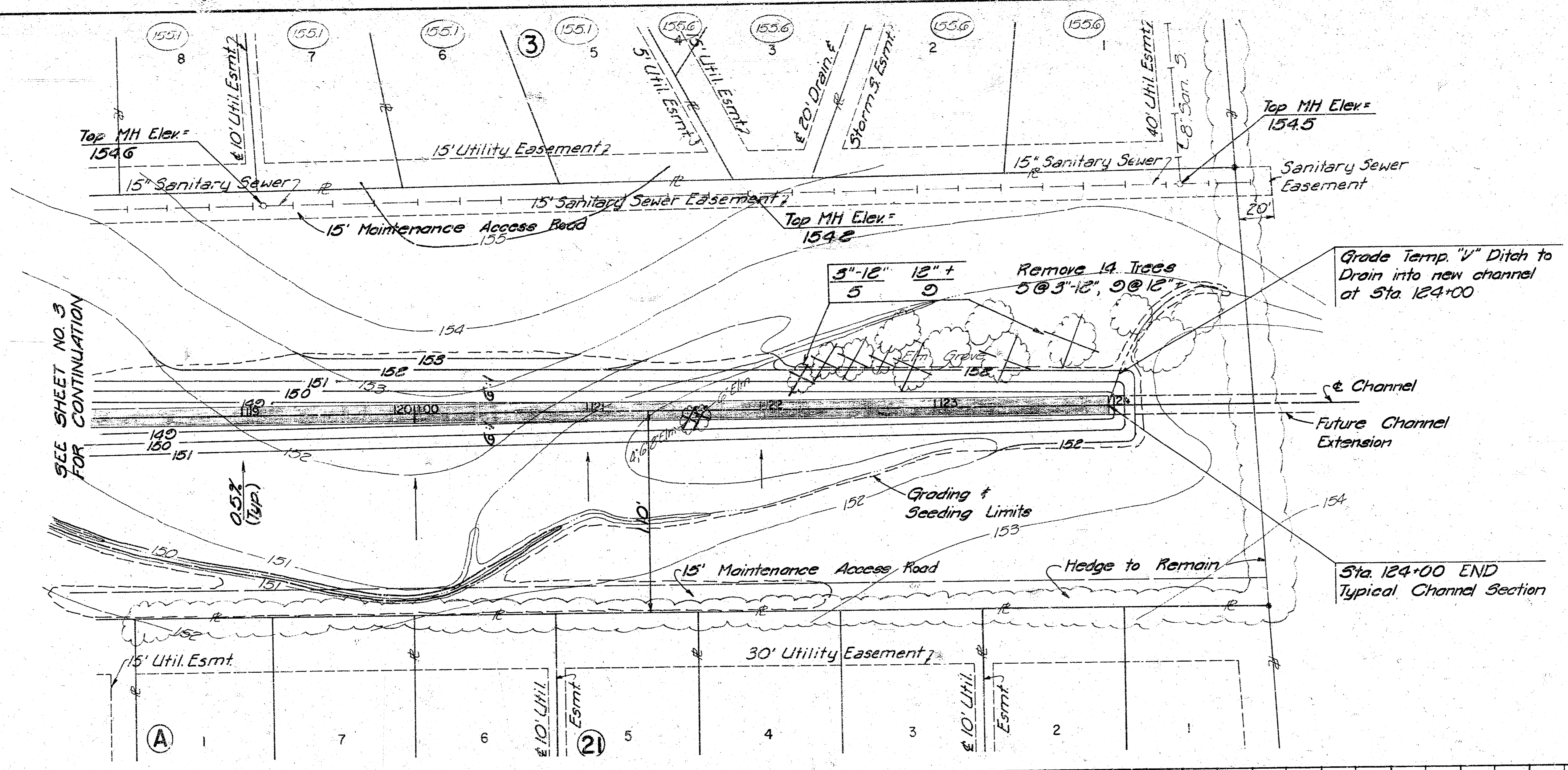
15' Maintenance Access Road shall be a minimum of 12" above Design High Water (DHW) or as shown by spot Elevations. (See Cross Sections)

Curve Data
 $\Delta = 29^\circ 28' 56''$
 $D = 14^\circ 19' 28''$
 $R = 400.00'$
 $T = 104.87'$
 $L = 205.13'$



CITY OF WICHITA, KANSAS	
STORM WATER DRAIN NO. 42	
STA. 100+00 TO STA. 108+00	
PROJ. NO. 468-76-245-80915-000-000-001	DATE
PROFESSIONAL ENGINEERING CONSULTANTS, P.A.	BY
ENGINEERS	DATE
WICHITA, KANSAS	REVISION
Designed by DD, CSB	NO.
Drawn by DM, BS	DATE
Sh. 2 of 7	

SCALE 1" = 40'



City of Wichita, Kansas	Professional Engineering Consultants, P.A.
Storm Water Drain No. 42	Wichita, Kansas
Sta. 118+00 to Sta. 124+00	Designed by DD, CSB
Proj. No. 468-76-245-80915-000-000-001	Drawn by DM, BS
Job No. 80087-4	Date
Revision	Date
By	Date
No.	Date