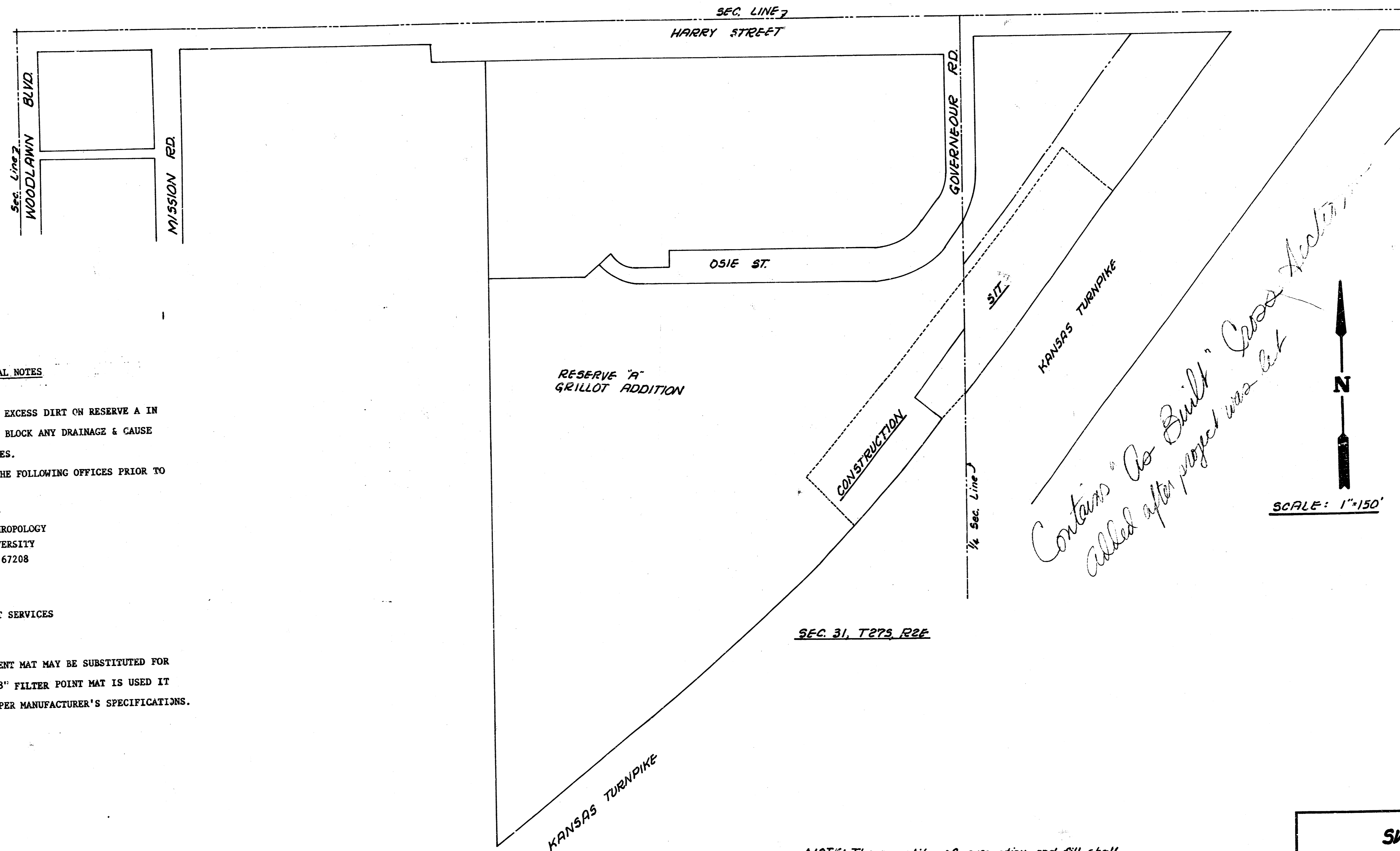


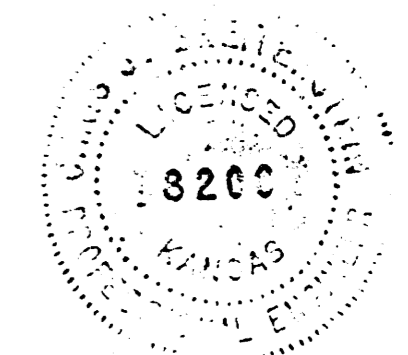
STORM WATER DRAIN NO. 56



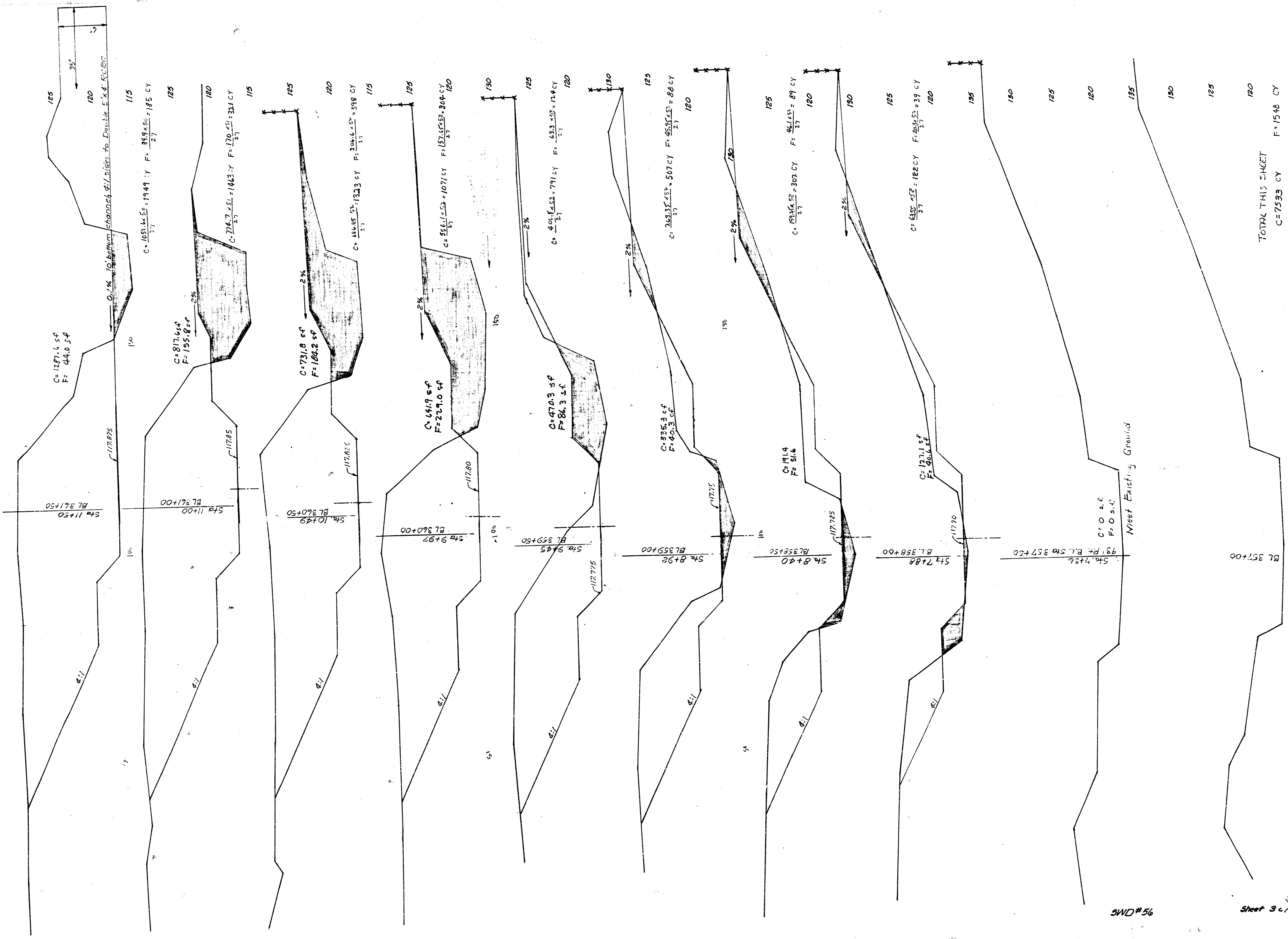
GENERAL NOTES

- CONTRACTOR TO STOCKPILE EXCESS DIRT ON RESERVE A IN SUCH A MANNER AS TO NOT BLOCK ANY DRAINAGE & CAUSE PONDING BEHIND STOCKPILES.
- CONTRACTOR TO CONTACT THE FOLLOWING OFFICES PRIOR TO BEGINNING CONSTRUCTION:
 - CITY ARCHAEOLOGIST
DEPARTMENT OF ANTHROPOLOGY
WICHITA STATE UNIVERSITY
WICHITA, KANSAS 67208
PHONE 265-3195
 - GENE RATH
DIRECTOR OF STREET SERVICES
CITY OF WICHITA
PHONE 268-4559
- 8" FILTER POINT REVETMENT MAT MAY BE SUBSTITUTED FOR TYPE III RIP-RAP. IF 8" FILTER POINT MAT IS USED IT IS TO BE INSTALLED AS PER MANUFACTURER'S SPECIFICATIONS.

NOTE: The quantity of excavation and fill shall be determined from cross-sections taken before the work is started and after the work is completed. Take sections at right angles to centerline of channel.



PROJECT DESCRIPTION		
SWD # 56		
PROJECT NUMBER		
448-76-245-81245-000-001		
BOOK NO. TP-3	APPROVED BY	DATE 7-83
DRAWN BY WSK		REVISED
CITY OF WICHITA		
DEPARTMENT OF ENGINEERING		
DIRECTOR OF ENGR. CITY ENGINEER		1/8
R. W. BRUGEMAN		Sheet 1 of 5

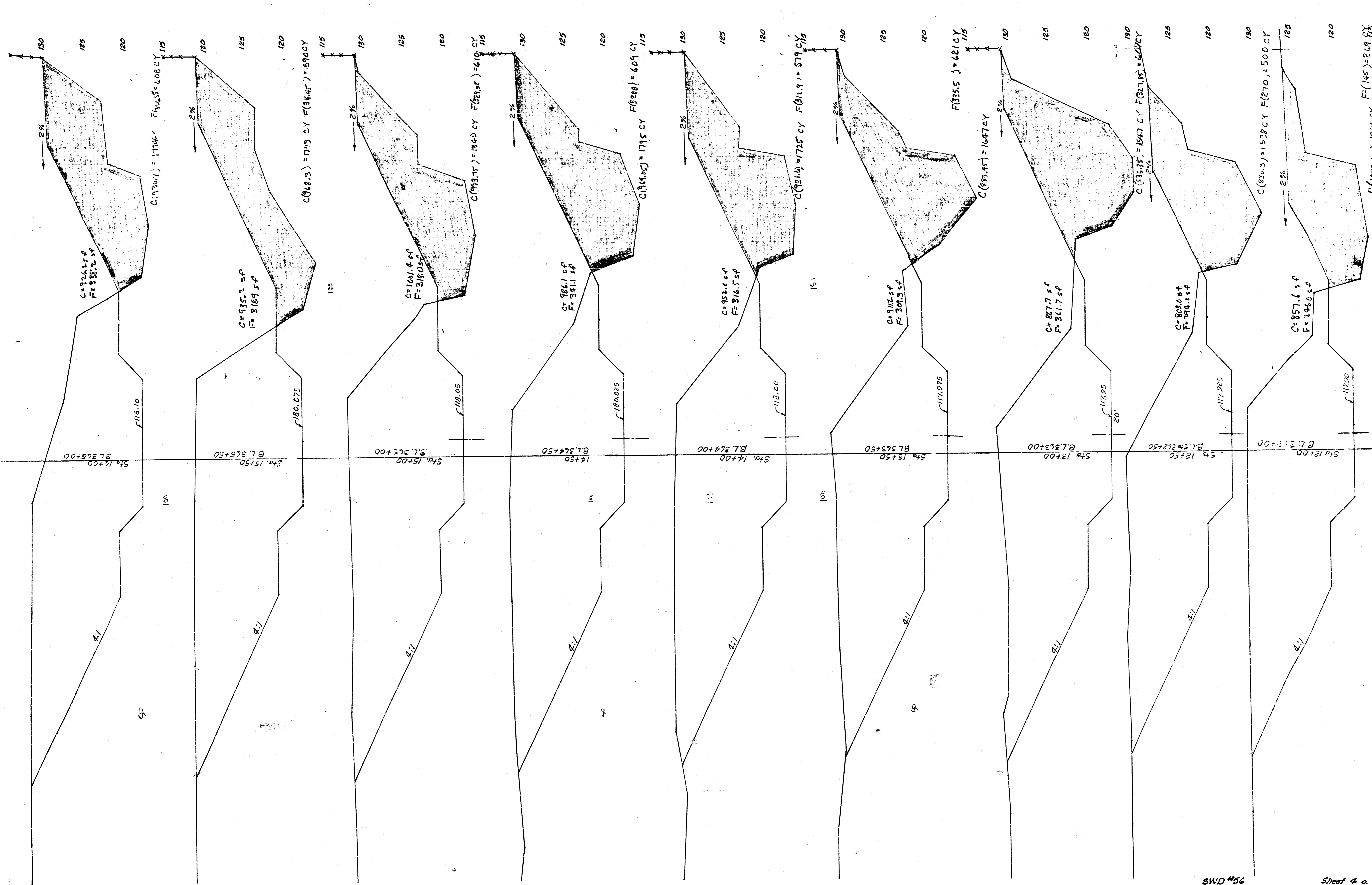


TOTAL THIS SHEET
 C = 7533 CY
 F = 1548 CY

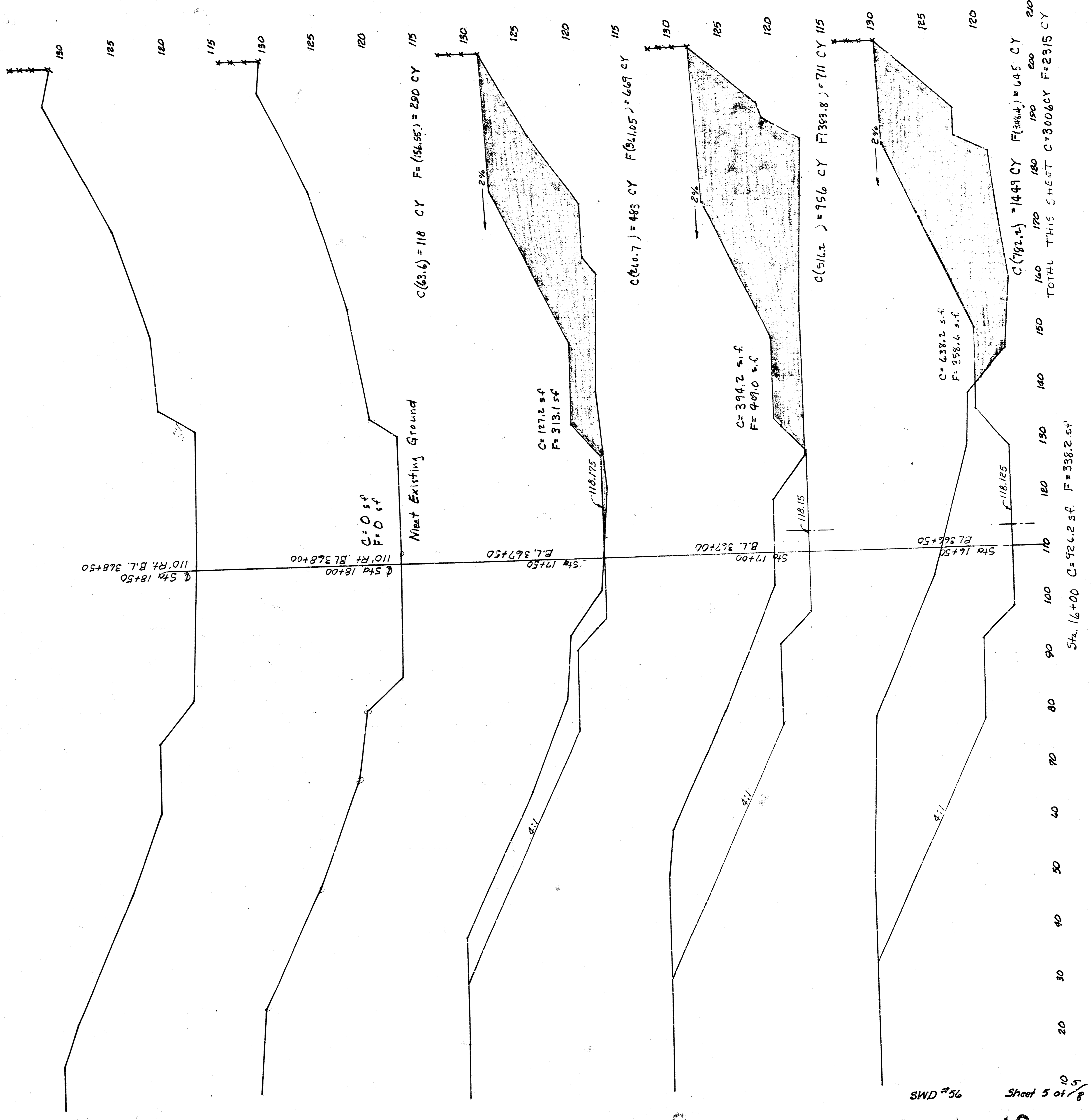
TOTAL ALL SHEETS
 C = 26134 CY
 F = 8,856 CY

SWD#56

Sheet 3 of 8



TOTAL THIS SHEET C=15,592 CY F=4,913 SF
 C(1012.6) = 1486 CY F(145) = 269 SF
 C(830.3) = 1538 CY F(270) = 500 CY
 C(935.3) = 1713 CY F(344) = 590 CY
 C(913.7) = 1840 CY F(275) = 610 CY
 C(891.0) = 1775 CY F(288) = 609 CY
 C(871.4) = 1725 CY F(271.9) = 579 CY
 C(859.9) = 1647 CY F(355) = 621 CY
 C(835.3) = 1547 CY F(271.8) = 602 CY
 C(820.3) = 1538 CY F(270) = 500 CY
 C(1012.6) = 1486 CY F(145) = 269 SF
 C(830.3) = 1538 CY F(270) = 500 CY
 C(935.3) = 1713 CY F(344) = 590 CY
 C(913.7) = 1840 CY F(275) = 610 CY
 C(891.0) = 1775 CY F(288) = 609 CY
 C(871.4) = 1725 CY F(271.9) = 579 CY
 C(859.9) = 1647 CY F(355) = 621 CY
 C(835.3) = 1547 CY F(271.8) = 602 CY
 C(820.3) = 1538 CY F(270) = 500 CY
 C(1012.6) = 1486 CY F(145) = 269 SF
 C(830.3) = 1538 CY F(270) = 500 CY
 C(935.3) = 1713 CY F(344) = 590 CY
 C(913.7) = 1840 CY F(275) = 610 CY
 C(891.0) = 1775 CY F(288) = 609 CY
 C(871.4) = 1725 CY F(271.9) = 579 CY
 C(859.9) = 1647 CY F(355) = 621 CY
 C(835.3) = 1547 CY F(271.8) = 602 CY
 C(820.3) = 1538 CY F(270) = 500 CY



14 3 1 10

SWD #56 Sheet 5 of 8

FILMED FROM THE BEST AVAILABLE COPY

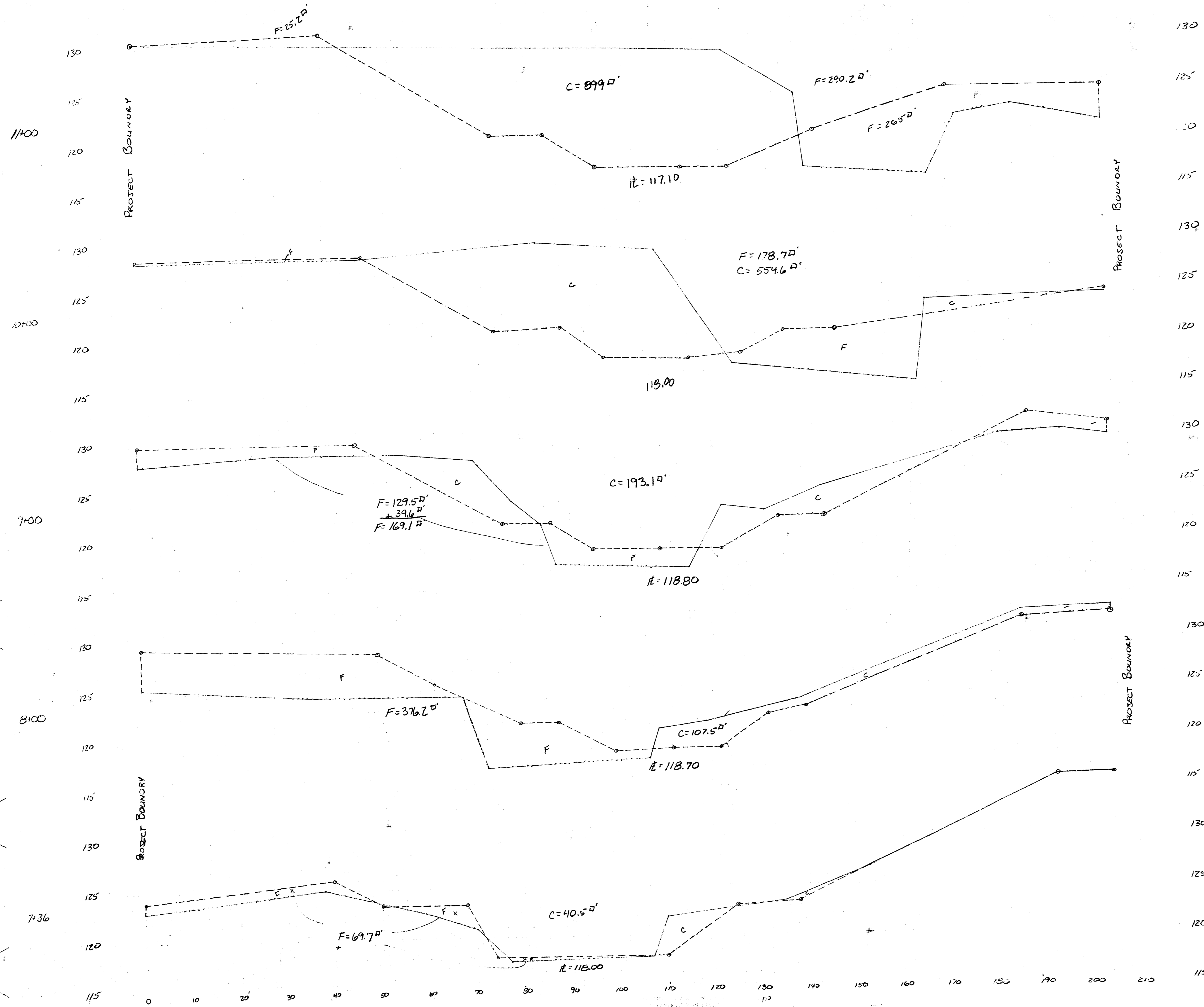
C=2691.9 cy
F=868.3 cy

C=1384.6 cy
F=644.1 cy

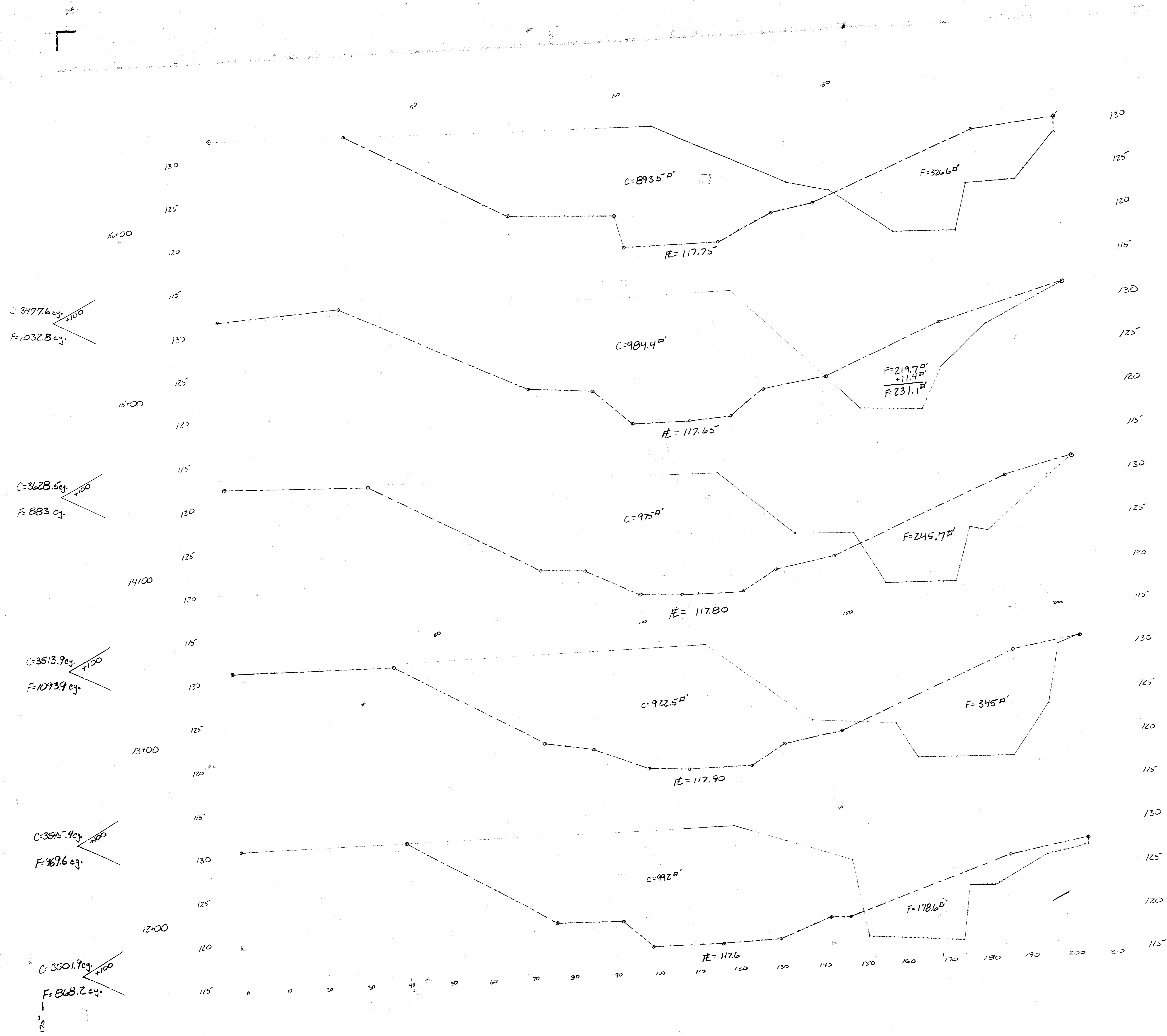
C=536.7 cy
F=1009.8 cy

C=175.4 cy
F=528.5 cy

C=37.5 cy
F=64.5 cy



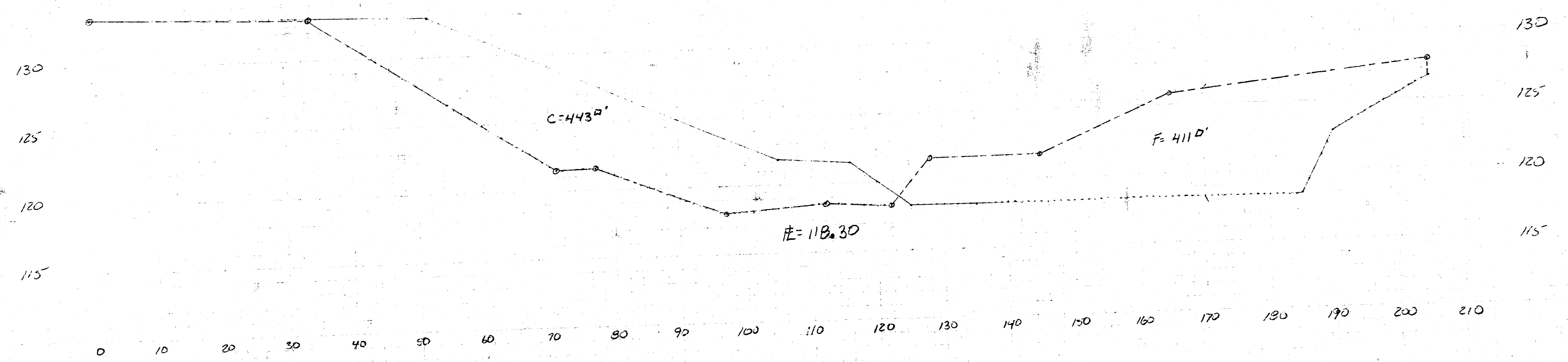
TOTAL EARTH QUANTITIES THIS PAGE:
 C= 4846.1 cy
 F= 3,115.2 cy
 TOTAL EARTH QUANTITIES:
 C= 25,808.8 cy.
 F= 10,089.7 cy.



TOTAL EARTH QUANTITIES THIS PAGE:
 C = 17,667.3 cu.
 F = 4847.5 cu.

C=820.4 cy.
F=761.1 cy.

C=2475 cy.
F=1365.9 cy.



TOTAL EARTH QUANTITIES THIS PAGE:
C= 3295.4 cy.
F= 2127.0 cy.

17 3 1 10
8/8

FILMED FROM THE BEST AVAILABLE COPY