

CITY OF WICHITA, KANSAS
 MICHAEL E. LINDEBAK, P.E., CITY ENGINEER

STORM WATER DRAIN NO. 86

CITY OF WICHITA PROJECT NO. 468-76-245-82012-000-000-001

INDEX CODE: 750075

SHEET NO.	TOTAL SHEETS
1	5

INDEX OF SHEETS

1. TITLE SHEET
- 2.-3. CHANNEL-PLAN AND PROFILE
- 4.-5. CHANNEL-CROSS SECTIONS

GENERAL NOTES

UNDERGROUND UTILITY SERVICE LINES AND OVERHEAD UTILITY POLE LINES ARE TO BE ADJUSTED AS NECESSARY BY OTHERS PRIOR TO CONSTRUCTION UNLESS THE PLANS SPECIFICALLY CALL FOR THEIR ADJUSTMENT BY THE CONTRACTOR. EXISTING UTILITIES AND THEIR LOCATION, AS SHOWN ON THE PLANS, REPRESENT THE BEST INFORMATION OBTAINABLE FOR DESIGN. LOCATION INFORMATION HAS BEEN OBTAINED FROM THE VARIOUS UTILITY COMPANIES AND IS EITHER FROM COMPANY RECORD DRAWINGS OR COMPANY PROVIDED FIELD LOCATIONS. THE CONTRACTOR WILL BE REQUIRED TO WORK AROUND EXISTING UTILITIES WITHIN THE RIGHT-OF-WAY WHICH DO NOT CONFLICT WITH PROPOSED CONSTRUCTION.

RUBBLE FROM THE REMOVAL OF MISCELLANEOUS STRUCTURES SHALL BE DISPOSED OF ON SITES TO BE PROVIDED BY THE CONTRACTOR. THESE SITES SHALL BE APPROVED BY THE ENGINEER AS TO SUITABILITY, APPEARANCE AND SITE LOCATION. LOCATIONS THAT, IN THE OPINION OF THE ENGINEER, WILL LEAVE AN UNSIGHTLY APPEARANCE WILL NOT BE APPROVED.

CONTRACTOR SHALL SATISFY HIMSELF OF SUBSURFACE CONDITIONS PRIOR TO CONSTRUCTION.

TREES AND SHRUBS IN PUBLIC RIGHT-OF-WAY WHICH ARE IN DIRECT CONFLICT WITH PROPOSED NEW CONSTRUCTION SHALL BE REMOVED BY THE CONTRACTOR WITH THE ENGINEER'S APPROVAL. TREES AND SHRUBS WHICH ARE NOT IN DIRECT CONFLICT WITH PROPOSED NEW CONSTRUCTION SHALL BE SAVED AND PROTECTED FROM DAMAGE.

THE CONTRACTOR SHALL BE RESPONSIBLE FOR PRESERVING PROPERTY IRONS. THE CONTRACTOR WILL BE REQUIRED TO RE-ESTABLISH ANY PROPERTY IRONS WHICH ARE DAMAGED OR DESTROYED BY HIS CONSTRUCTION OPERATIONS. SUCH IRONS SHALL BE RE-ESTABLISHED BY A LICENSED LAND SURVEYOR IN ACCORDANCE WITH STATE LAWS.

CONTRACTOR WILL BE REQUIRED TO PROVIDE A MINIMUM ADVANCE NOTICE OF TWENTY-FOUR (24) HOURS TO UTILITY COMPANIES PRIOR TO STARTING ANY EXCAVATION AS FOLLOWS:

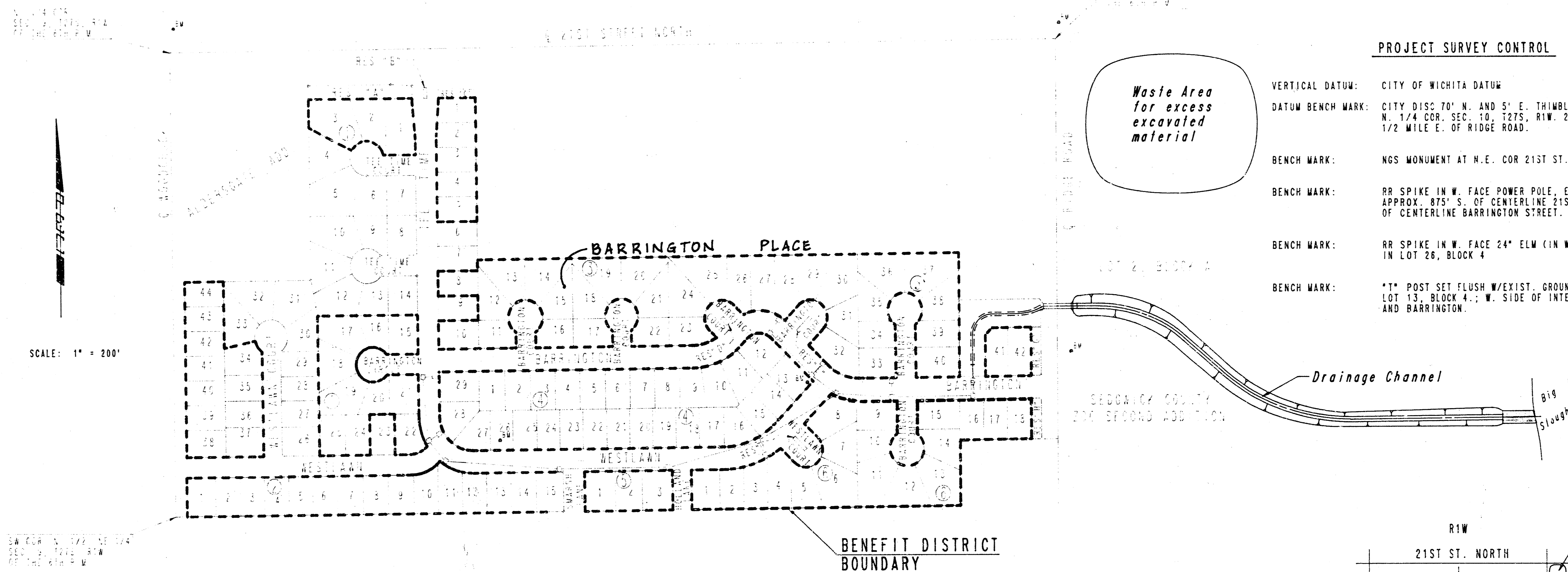
SOUTHWESTERN BELL TELEPHONE COMPANY	1-316-571-2611
CABLEVISION	262-4270 OR 263-2091
KPL GAS SERVICE	263-7511
KANSAS GAS & ELECTRIC	264-1141
CITY OF WICHITA WATER DEPARTMENT	268-4900
CITY OF WICHITA SEWER DEPARTMENT	268-4071
ARKLA GAS COMPANY	942-8350 OR 263-8161

THE CONTRACTOR SHALL BE RESPONSIBLE FOR CONSTRUCTION OF ANY COFFERDAMS, EARTH BERMS, SHEET PILING ETC. AND/OR PUMPING REQUIRED TO ENSURE PROPER INSTALLATION OF RIPRAP. THIS WORK SHALL BE CONSIDERED SUBSIDIARY TO OTHER WORK ITEMS.

EXCESS MATERIAL FROM CHANNEL EXCAVATION SHALL BE WASTED AT SITE SHOWN ON THIS SHEET. HAUL TO THIS SITE SHALL BE CONSIDERED SUBSIDIARY TO OTHER WORK ITEMS AND SHALL BE COORDINATED WITH SEDGWICK COUNTY PERSONNEL. CONTACT PUBLIC SERVICE BUREAU OF SEDGWICK COUNTY (316) 268-7501.

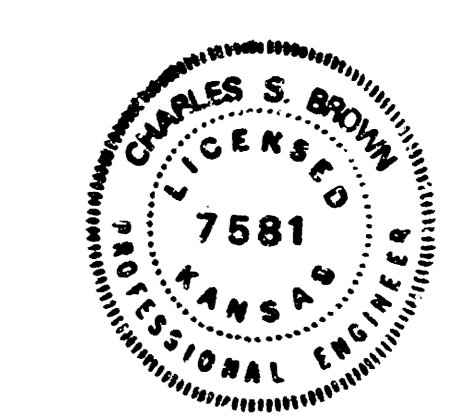
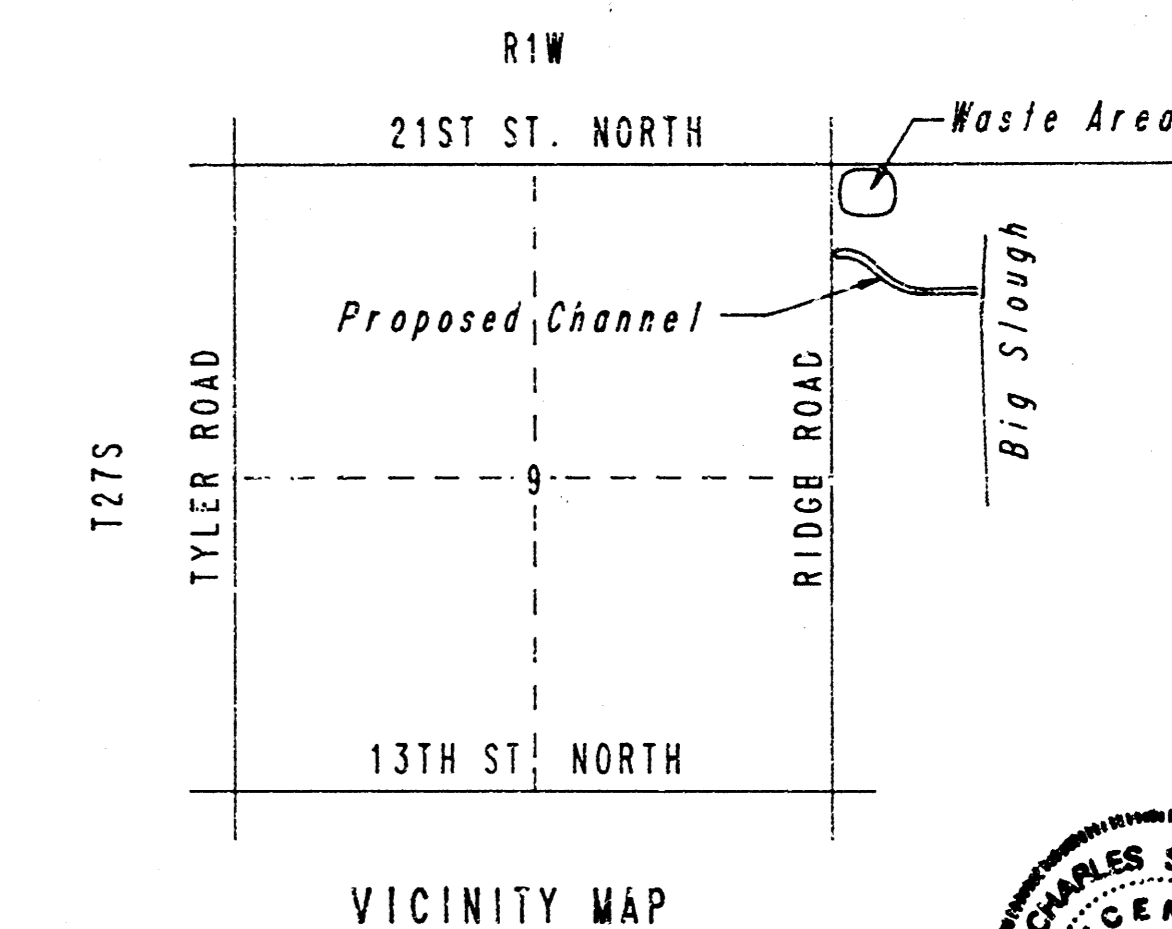
EARTHWORK

EXCAVATION
 X-SECTIONS 6,910 CU. YDS.



PROJECT SURVEY CONTROL

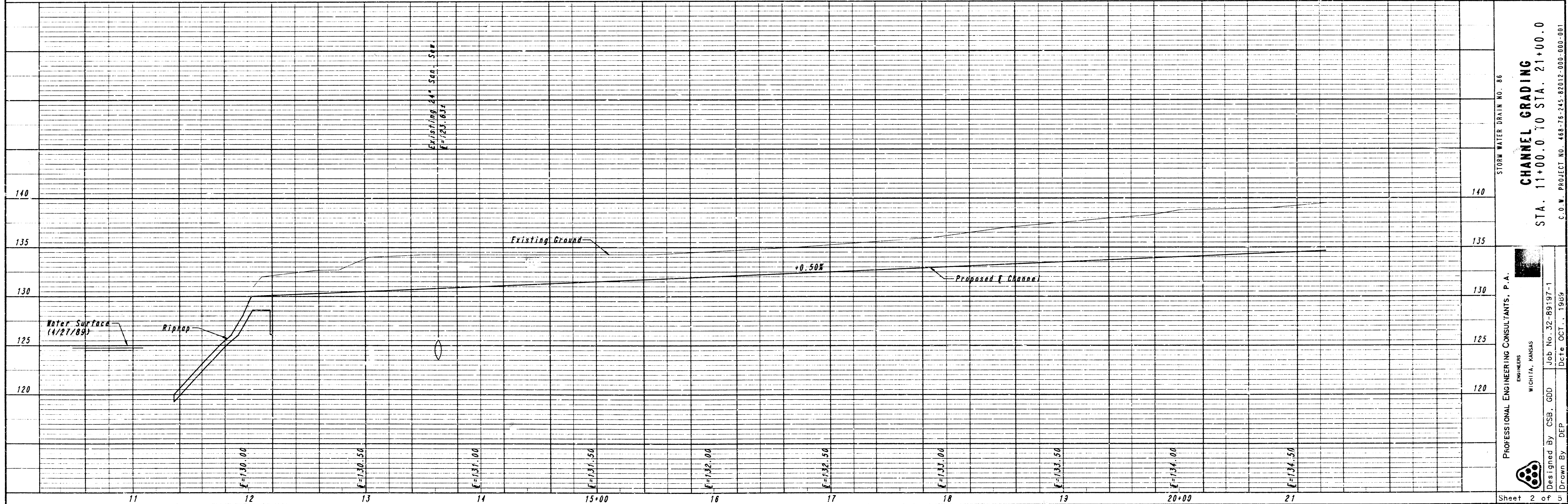
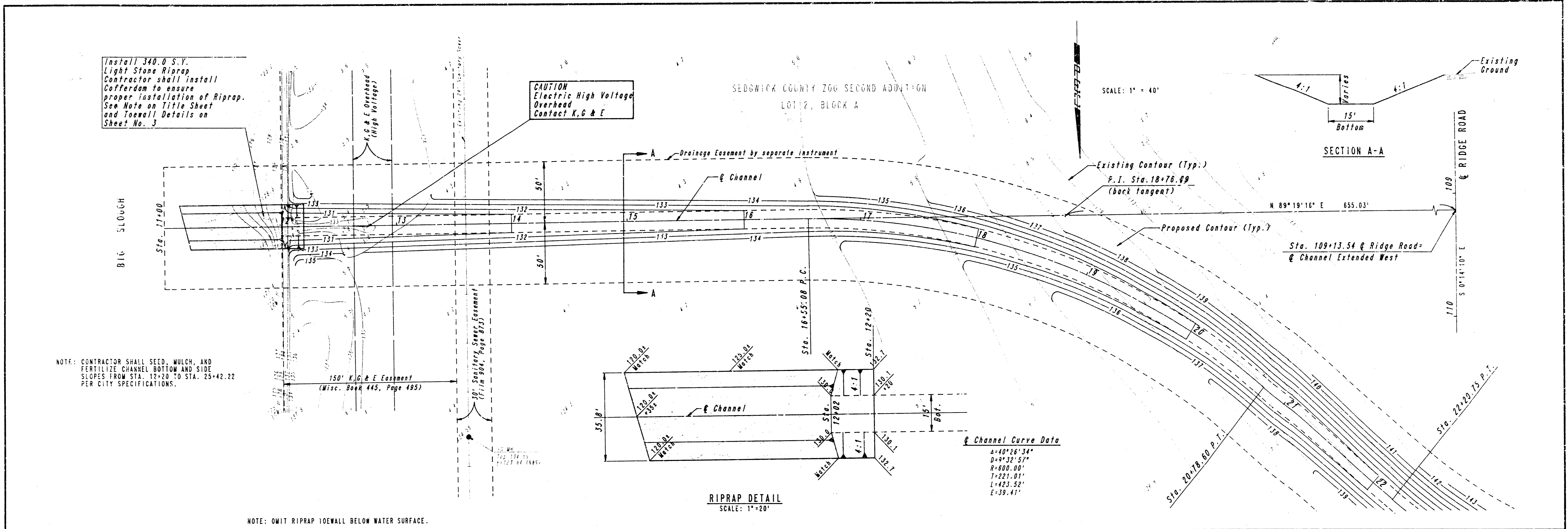
- VERTICAL DATUM: CITY OF WICHITA DATUM
 DATUM BENCH MARK: CITY DISC 70" N. AND 5" E. THIMBLE AT N. 1/4 COR. SEC. 10, T27S, R1W, 21ST ST. NORTH, 1/2 MILE E. OF RIDGE ROAD. ELEV. +132.416
 BENCH MARK: NGS MONUMENT AT N.E. COR 21ST ST. N. AND RIDGE ROAD ELEV. +142.00
 BENCH MARK: RR SPIKE IN W. FACE POWER POLE, E. SIDE RIDGE ROAD APPROX. 875' S. OF CENTERLINE 21ST. ST. N., 110' N. OF CENTERLINE BARRINGTON STREET. ELEV. +144.18
 BENCH MARK: RR SPIKE IN W. FACE 24" ELM (IN WHEAT FIELD) IN LOT 26, BLOCK 4 ELEV. +155.12
 BENCH MARK: "1" POST SET FLUSH W/EXIST. GROUND 7' W. OF E. COR LOT 13, BLOCK 4.; W. SIDE OF INTERSECTION WESTLAWN AND BARRINGTON. ELEV. +144.98



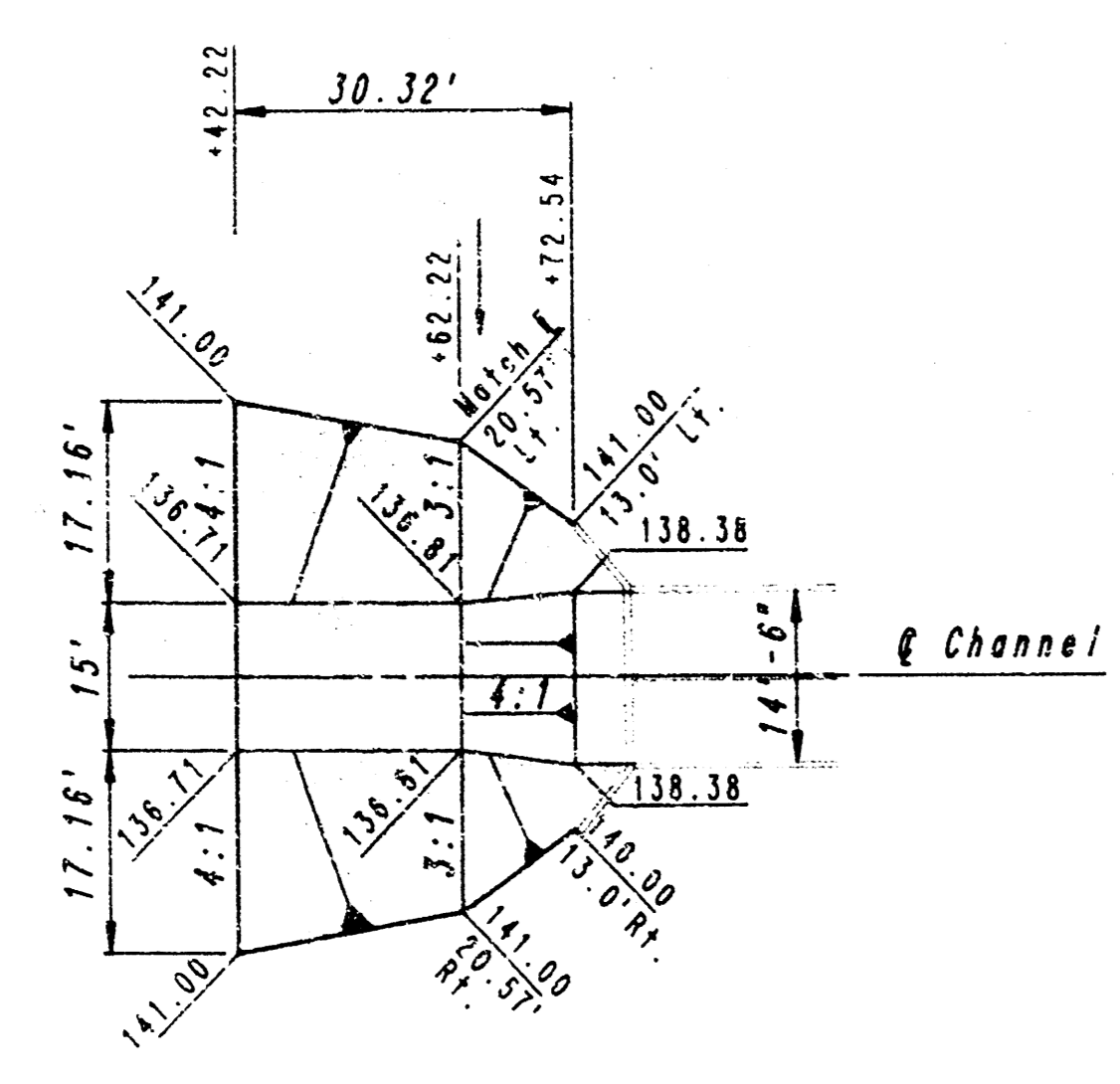
OCTOBER, 1989
 PLANS PREPARED BY
 PROFESSIONAL ENGINEERING CONSULTANTS, P.A.
 ENGINEERS
 WICHITA, KANSAS

Built 6/90

FILMED FROM THE BEST AVAILABLE COPY

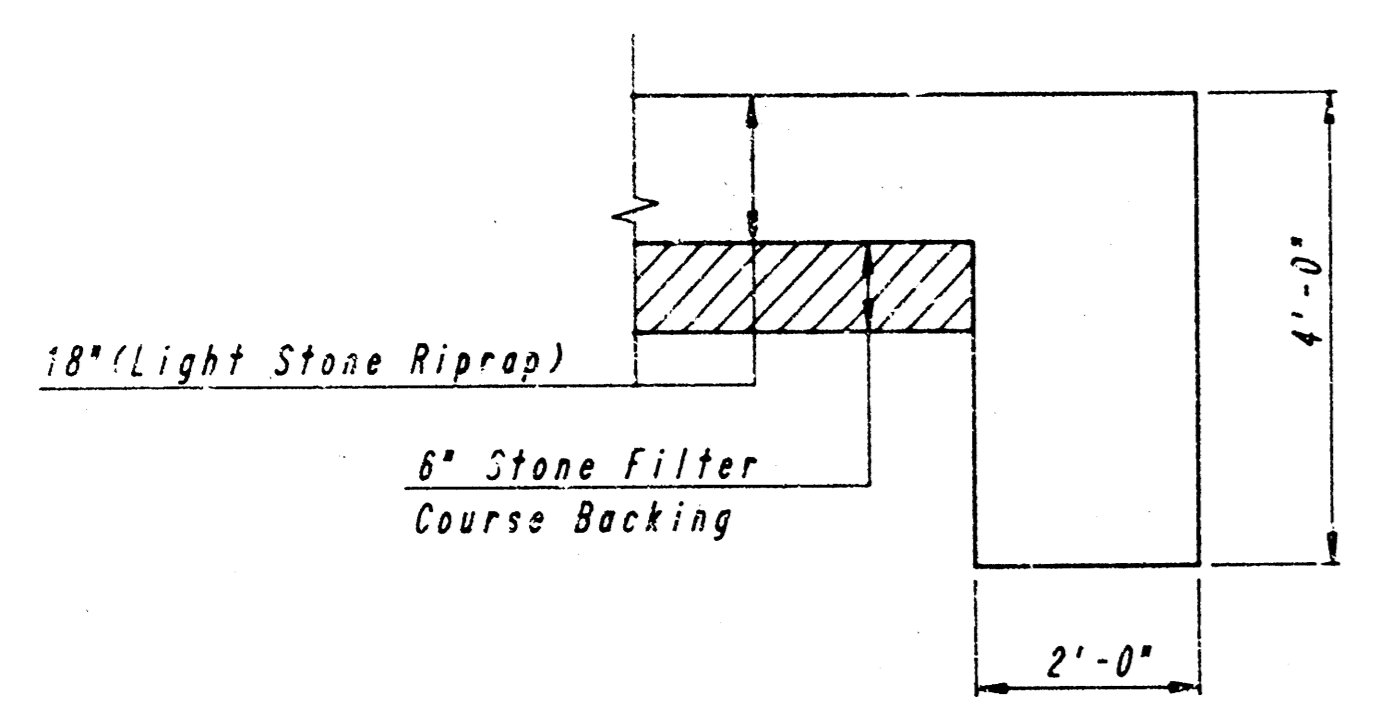


FILMED FROM THE BEST AVAILABLE COPY.....



NOTE: OMIT TOEWALL ADJACENT TO RCB AND WINGWALLS.

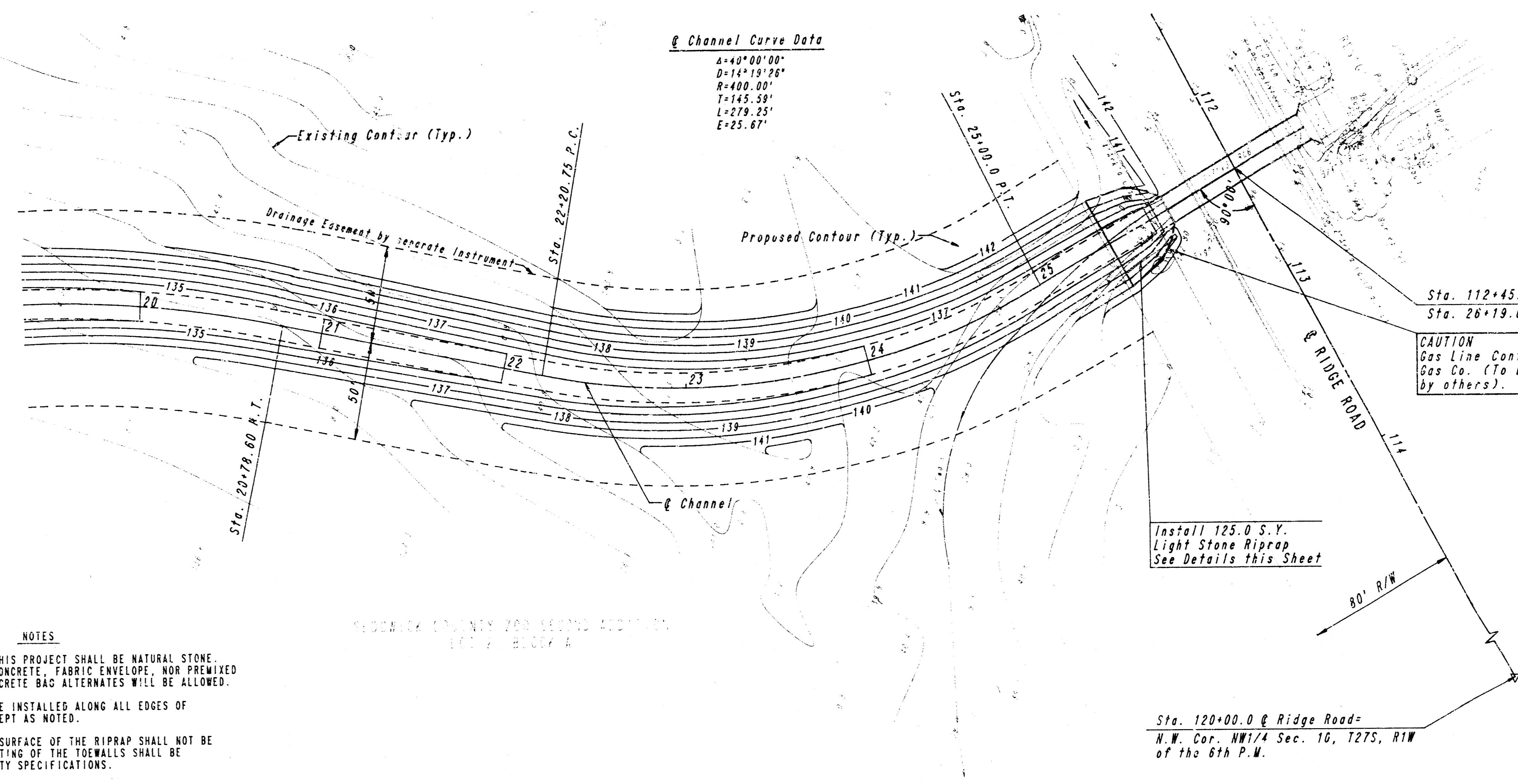
RIPRAP DETAIL
SCALE: 1" = 20"



TYPICAL SECTION THRU TOEWALL
NO SCALE

- NOTES**
1. ALL RIPRAP FOR THIS PROJECT SHALL BE NATURAL STONE. NEITHER BROKEN CONCRETE, FABRIC ENVELOPE, NOR PREMIXED DRY PACKAGE CONCRETE BAG ALTERNATES WILL BE ALLOWED.
 2. TOEWALLS SHALL BE INSTALLED ALONG ALL EDGES OF STONE RIPRAP EXCEPT AS NOTED.
 3. GROUTING OF THE SURFACE OF THE RIPRAP SHALL NOT BE PERFORMED. GROUTING OF THE TOEWALLS SHALL BE PERFORMED PER CITY SPECIFICATIONS.

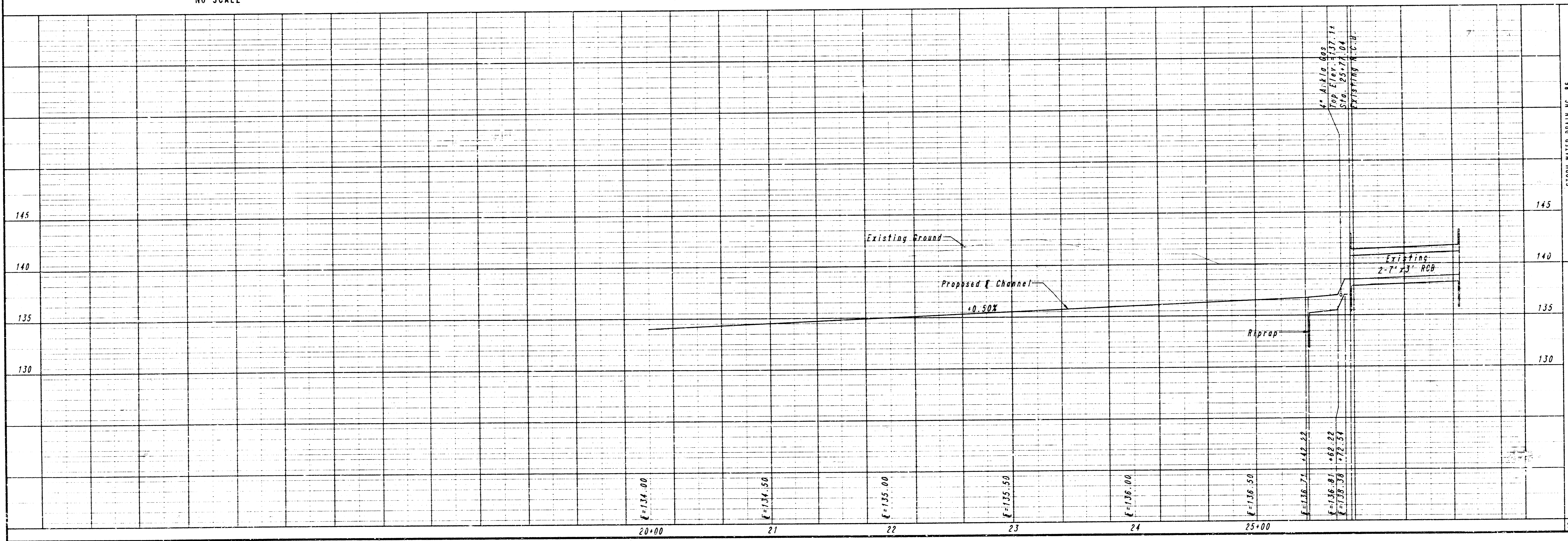
Channel Curve Data
 $A=40^{\circ}00'00''$
 $D=14^{\circ}19'26''$
 $R=400.00'$
 $T=145.59'$
 $L=279.25'$
 $E=25.67'$



CAUTION
Gas Line Contact Arko Gas Co. (To be relocated by others).

SCALE: 1" = 40'

NOTE: SEE SHEET NO. 3 FOR TYPICAL CHANNEL SECTION.



STORM WATER DRAIN NO. 86
CHANNEL GRADING
 STA. 21+00.0 TO STA. 25+77.04
 G.O.W. PROJECT NO. 488-76-245-82012-000-000-001

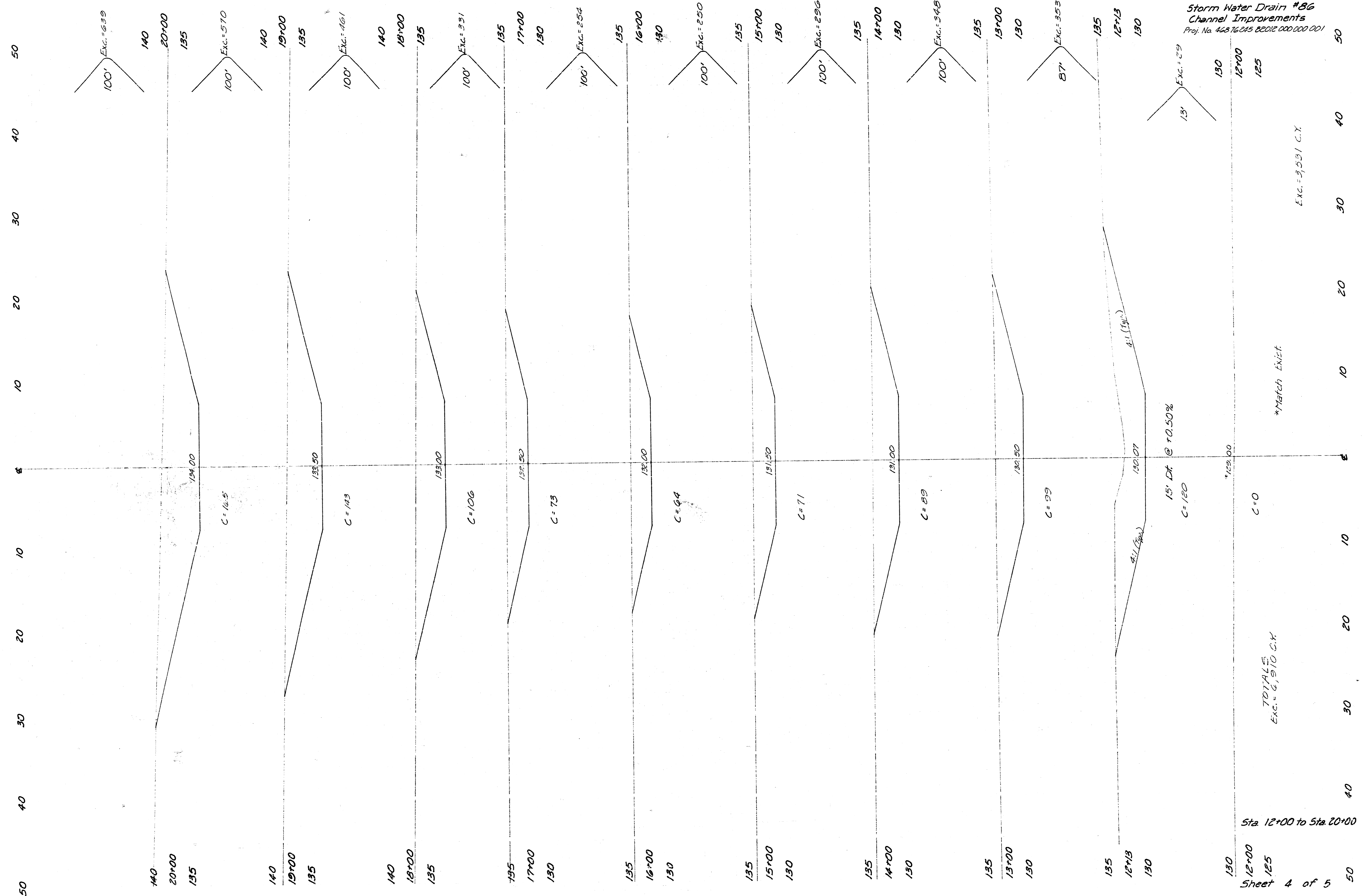
PROFESSIONAL ENGINEERING CONSULTANTS, P.A.
 ENGINEERS
 WICHITA, KANSAS

Designed By CSB, GDD
 Drawn By DEP
 Job No. 32-89197-1
 Date OCT., 1989

Sheet 3 of 3

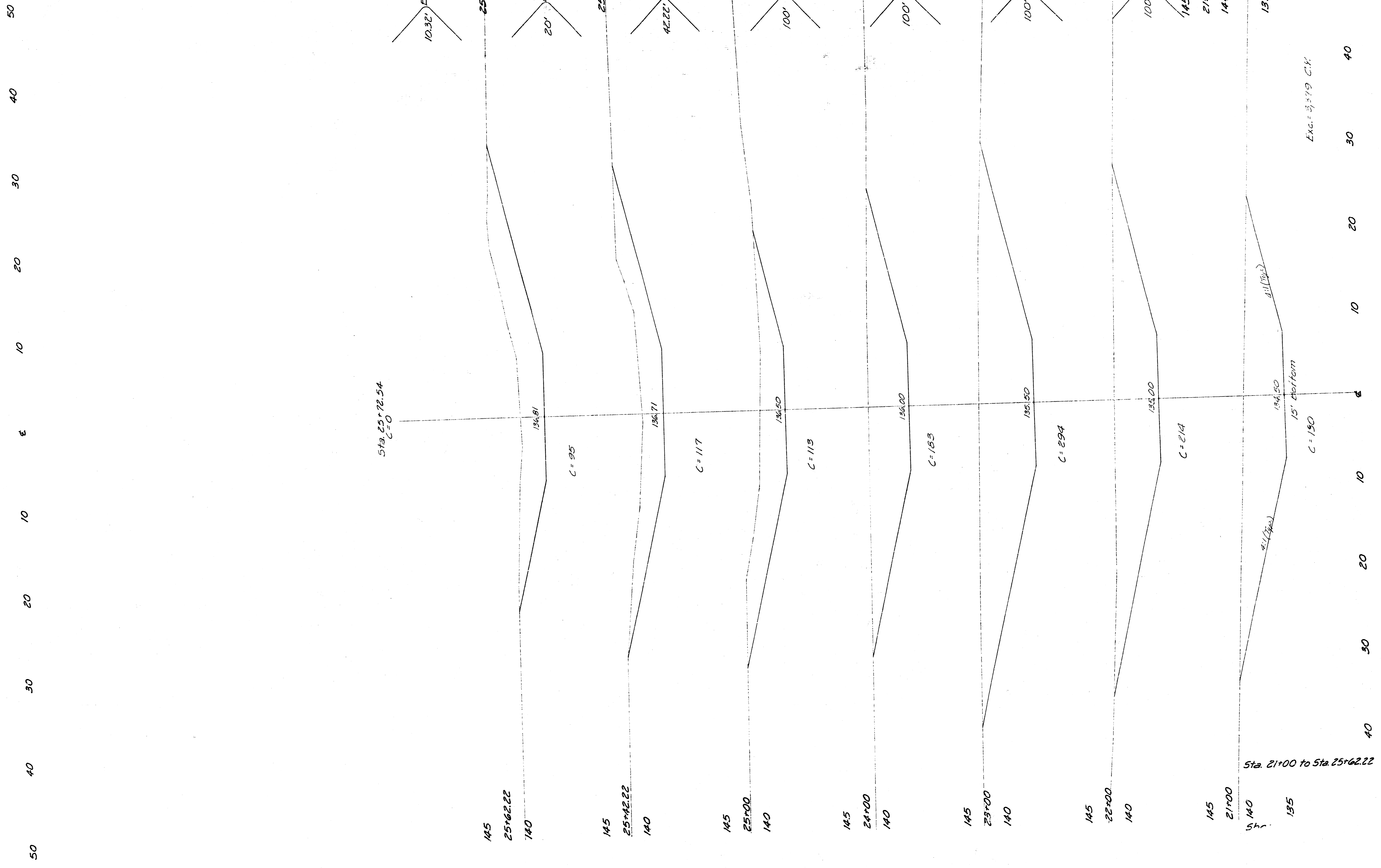
FILMED FROM THE BEST AVAILABLE COPY

Storm Water Drain #56
Channel Improvements
Proj. No. 44276245 82012 000 000 001



FILMED FROM THE BEST AVAILABLE COPY

Storm Water Drain # 86
 Channel Improvements
 Proj. No. 468 16 245 B2012 000 000 001



FILMED FROM THE BEST AVAILABLE COPY