

STORM WATER DRAIN #110

PAWNEE AND WEST INDUSTRIAL PARK

AND

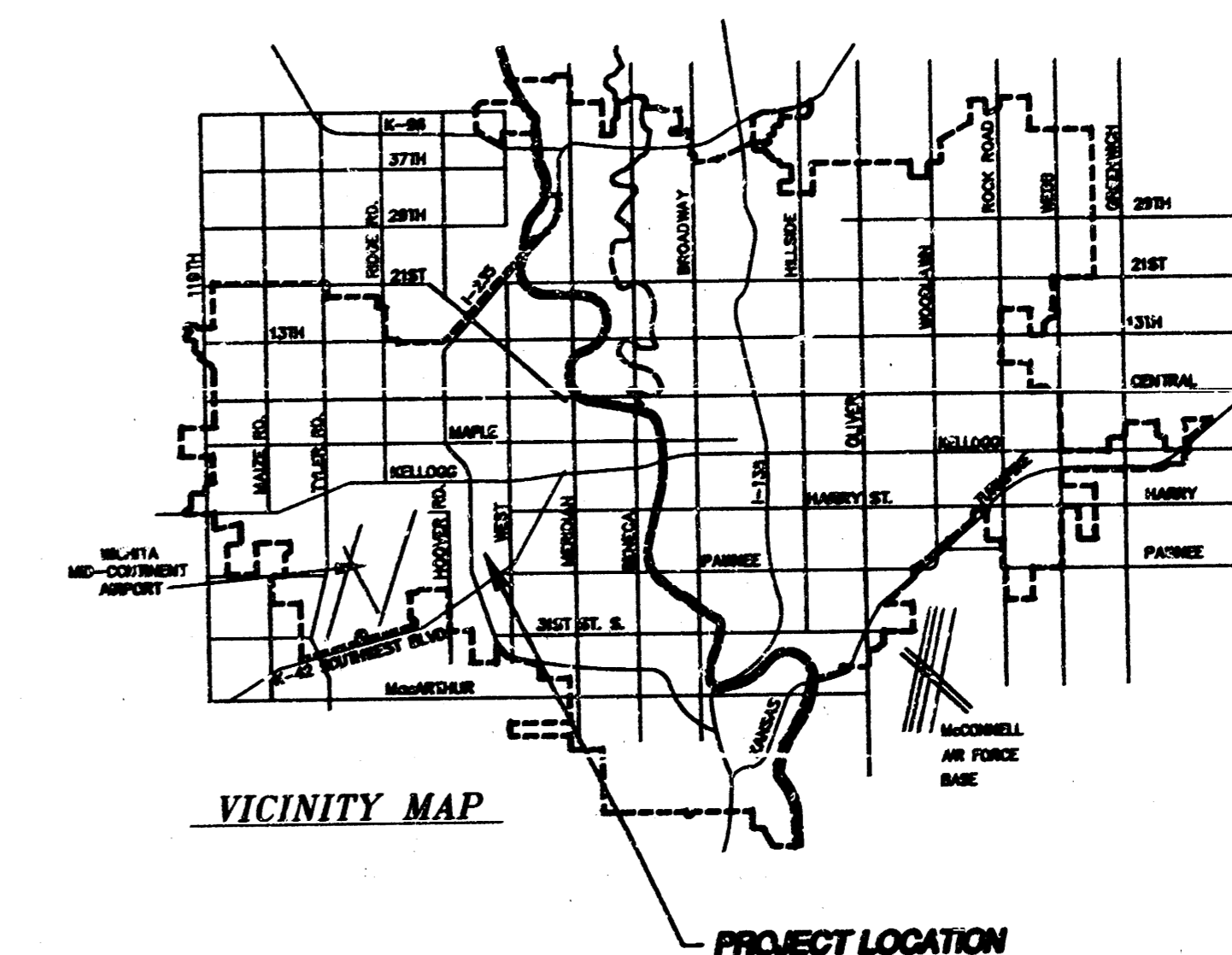
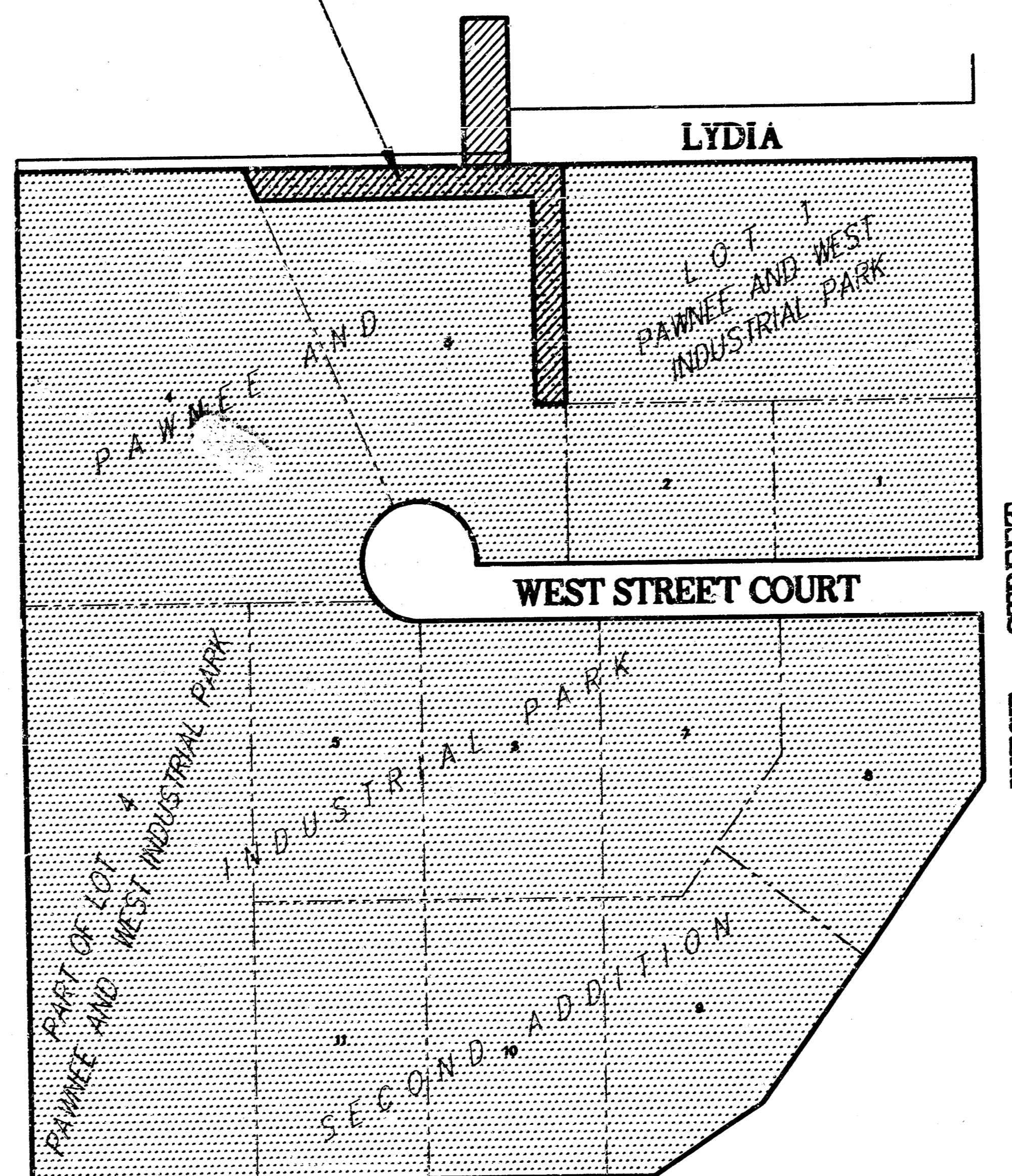
PAWNEE AND INDUSTRIAL PARK SECOND ADDITION

PROJECT NO: 468-76-245-82426-000-000-001
 INDEX CODE: 750661

GENERAL NOTES:

- Underground utility service lines and overhead utility pole lines are to be adjusted as necessary by others prior to construction unless the plans specifically call for their adjustment by the Contractor or unless the plans specifically identify a utility to be adjusted by its owner during construction. Existing utilities and their location, as shown on the plans, represent the best information obtainable for design. Location information has been obtained from the various utility companies and is either from company record drawings or company-provided field locations. The Contractor will be required to work around existing utilities within the right-of-way which do not conflict with proposed construction.
- A saw cut of at least one-half the depth of existing surface courses or one-fourth the depth of existing total pavement thickness shall be provided at locations where proposed construction abuts an existing surface course or pavement for which partial removal of that surface or pavement is required, except when such saw cuts are within three (3) feet of an existing joint the limits of removal shall be extended to the existing joint. Such saw cuts will not be paid for directly and this cost shall be considered as subsidiary to the removal of the surface or pavement.
- Rubble from the removal of miscellaneous structures and excess excavation which is to be wasted shall be disposed of on sites to be provided by the Contractor. These sites shall be approved by the Engineer as to suitability, appearance and site location. Locations that, in the opinion of the Engineer, will leave an unsightly appearance will not be approved.
- All disposal sites must be approved by the Kansas Department of Health and Environment. Material either stockpiled or disposed of in a flood plain would require a Kansas State Board of Agriculture permit. Any material dumped in waters of the United States or wetlands is subject to U.S. Corps permitting regulations. Any material buried or stockpiled beyond approved of Engineers construction limits would require additional archaeological investigations unless buried in a previously approved borrow location.
- Trees and shrubs in public right-of-way which are in direct conflict with proposed new construction shall be removed by the Contractor with the Engineer's approval. Trees and shrubs which are not in direct conflict with proposed new construction shall be saved and protected from damage.
- The Contractor shall give all property owners and/or tenants of developed property directly abutting the construction of this project a minimum of ten (10) days advance notice prior to start of construction.
- The Contractor shall be responsible for preserving property irons. The Contractor will be required to re-establish any property irons which are damaged or destroyed by his construction operations. Such irons shall be re-established by a licensed land surveyor in accordance with state laws.
- All costs for removal of existing pavement shall be included in the lump sum price bid for Clearing Right-of-Way and Site Preparation. All costs for replacement of existing pavement shall be included in the lump sum price bid for Site Restoration. Removal of existing pavement and/or replacement of existing pavement shall conform to the applicable sections of the City of Wichita Standard Specifications. Minimum limits of such pavement removal and replacement shall be one foot beyond the limits of the excavation made for the water line or the structure, except when such lines of removal are within three (3) feet of an existing joint, the limits of removal shall be extended to the existing joint.
- Pavement removal and/or replacement will be measured and paid for on the lineal foot basis as measured along the centerline of the sewer regardless of width, pavement type and/or pavement thickness. Minimum limits of such pavement removal and replacement shall be one foot beyond the limits of the excavation made for the sewer or the structure, except when such lines of removal are within three (3) feet of an existing joint the limits of removal shall be extended to the existing joint. Removal and replacement of existing pavement shall conform to the applicable sections of the City of Wichita Standard Specifications.
- All areas disturbed by construction operations shall be re-seeded and fertilized in accordance with standard specifications. All areas of slope greater than 1:10 shall be mulched.
- Contractor shall contact Tracey Call at Asphalt Construction Co. to make arrangements for work north of Lydia. Phone 522-0023.

PROJECT AREA



AREA MAP

SRB
 SCALE: 1"=150'

BOOKED
 1-25-36
 Mich
 D-266

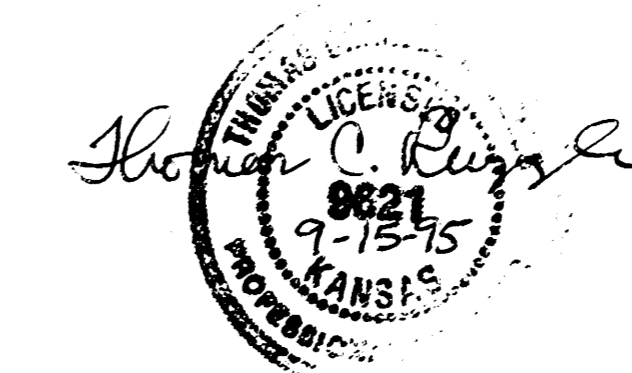
BENCH MARK:
 "□" CUT ON CENTERLINE OF E. BOUND P.V.M.T. OF K-42 AT WEST R.O.W. LINE OF WEST STREET. ELEV. 108.49
 RAILROAD SPIKE IN E. FACE OF POWER POLE, 6TH POLE WEST OF WEST ST. ON SOUTH SIDE OF LYDIA ELEV. 108.93

IMPROVEMENT DISTRICT

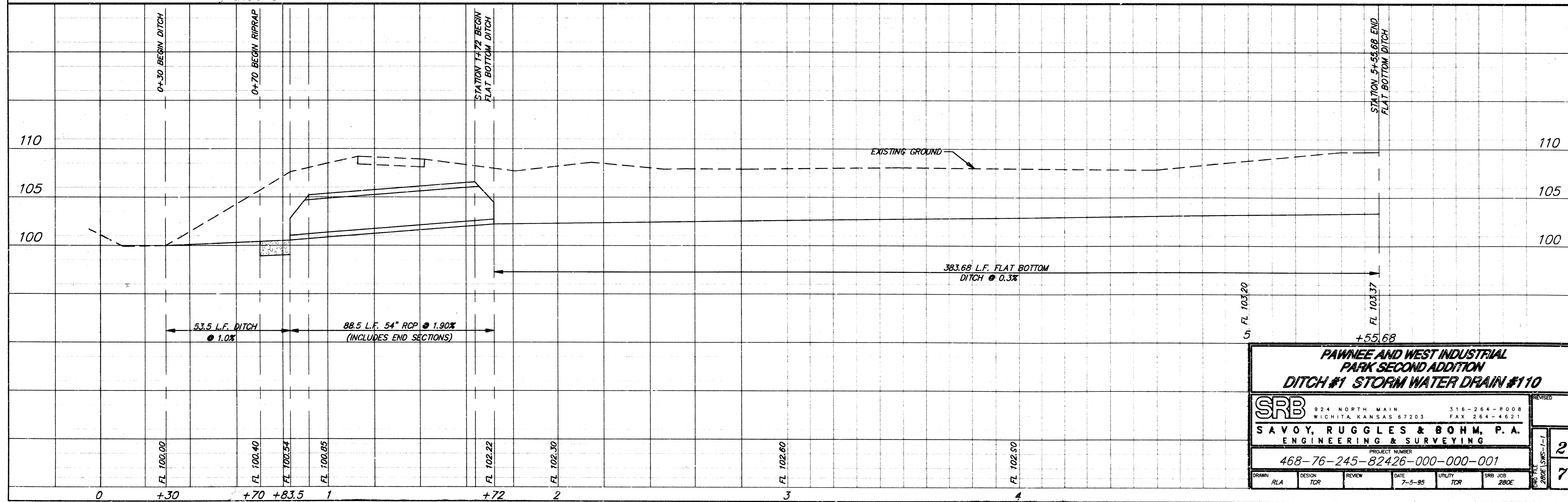
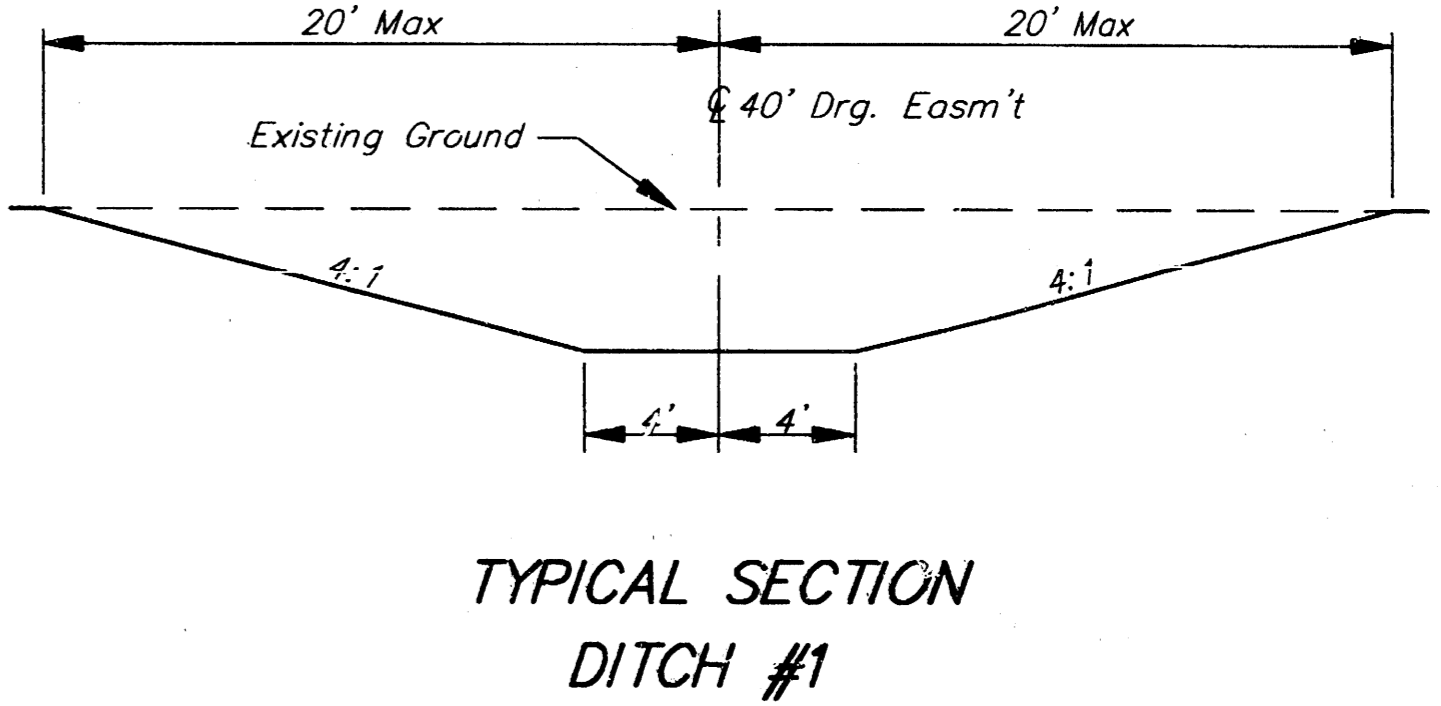
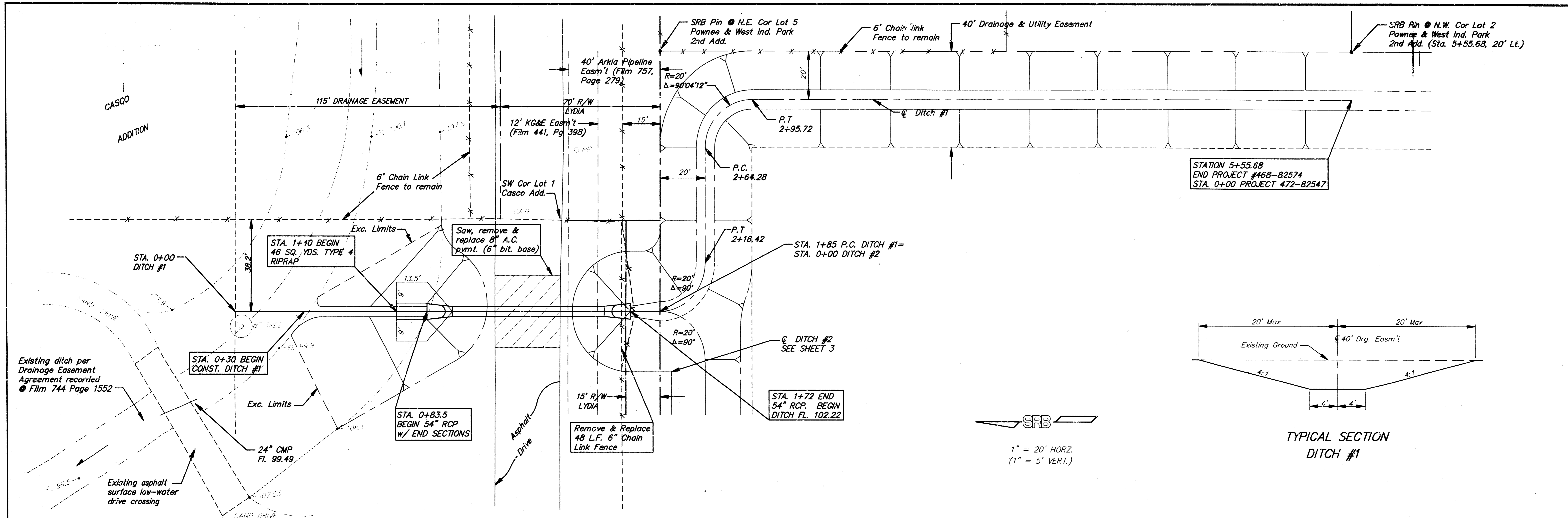
INDEX OF SHEETS

- TITLE SHEET
- PLAN - PROFILE
- X-SECTIONS
- PLAT COPY

CITY OF WICHITA, KANSAS
 MICHAEL E. LINDEBAK - CITY ENGINEER

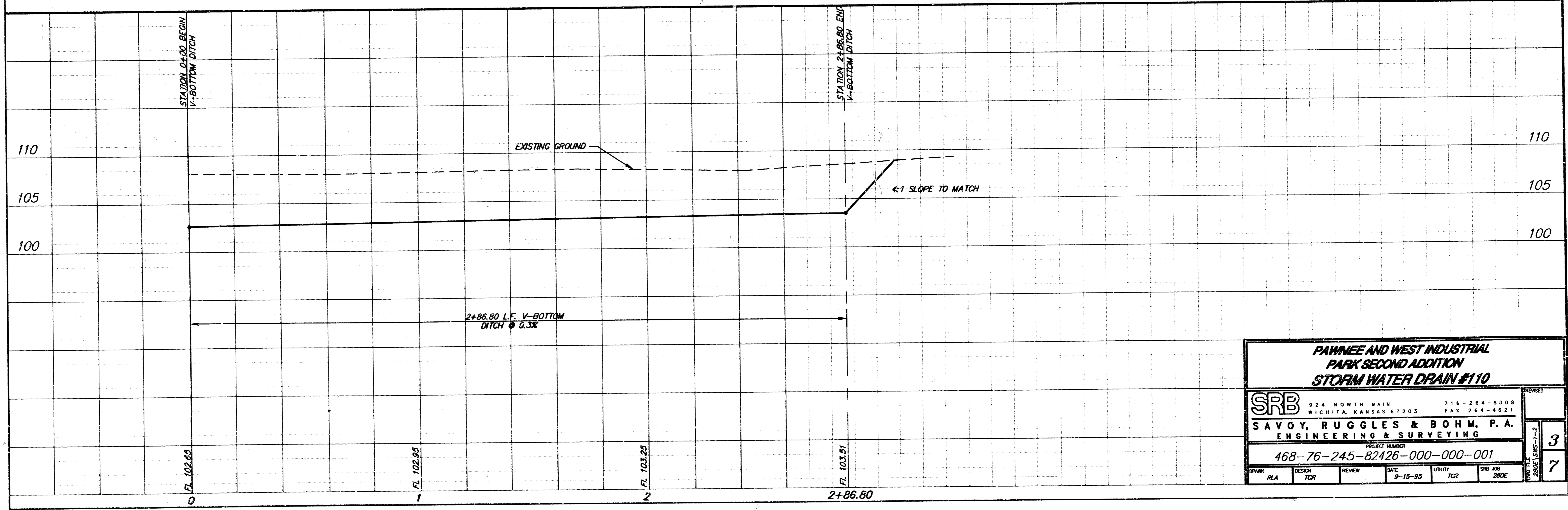
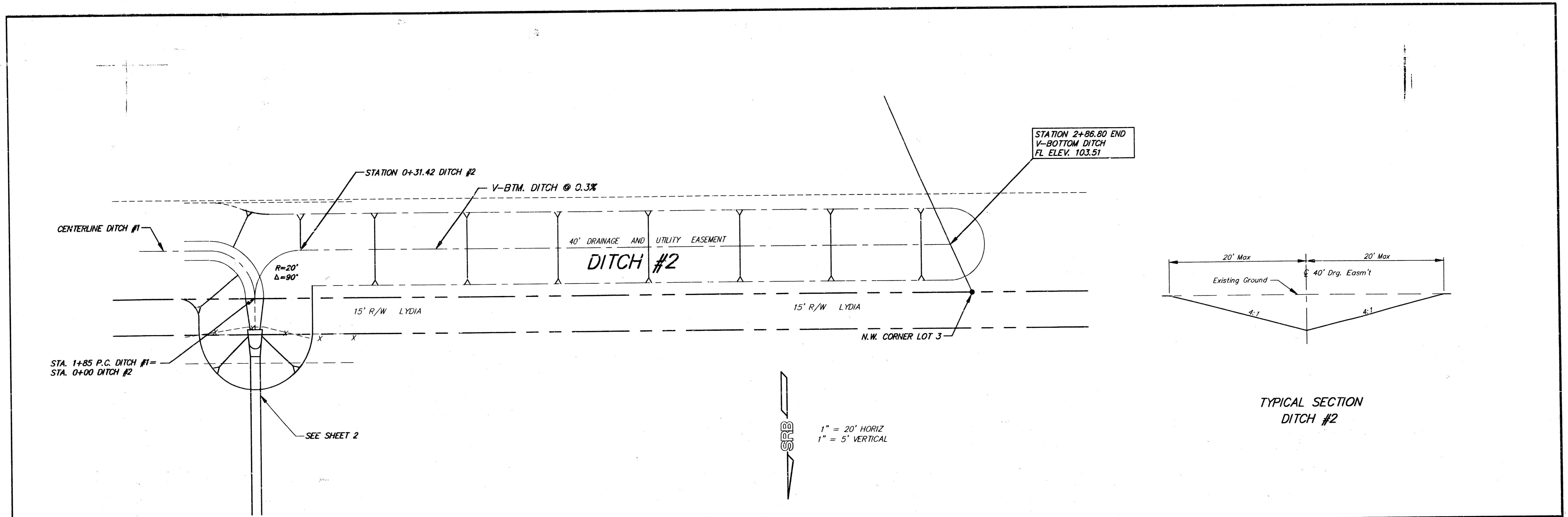


SRB 924 NORTH MAIN 316-264-8008
 WICHITA, KANSAS 67203 FAX 264-4621
 SAVOY, RUGGLES & BOHM, P. A.
 ENGINEERING & SURVEYING



**PAWNEE AND WEST INDUSTRIAL
PARK SECOND ADDITION
DITCH #1 STORM WATER DRAIN #110**

SRB		324 NORTH MAIN WICHITA KANSAS 67203	316-264-8008 FAX 264-4621
SAVOY, RUGGLES & BOHM, P. A. ENGINEERING & SURVEYING			
PROJECT NUMBER 468-76-245-82426-000-000-001			
DRAWN RLA	DESIGN TCR	REVIEW TCR	DATE 7-5-95
UTILITY TOR		SRB JOB 280E	DATE 7-5-95



PAWNEE AND WEST INDUSTRIAL PARK SECOND ADDITION STORM WATER DRAIN #110

SRB 324 NORTH MAIN WICHITA, KANSAS 67203 316-264-8008 FAX 264-4621

SAVOY, RUGGLES & BOHM, P.A. ENGINEERING & SURVEYING

PROJECT NUMBER: 468-76-245-82426-000-000-001

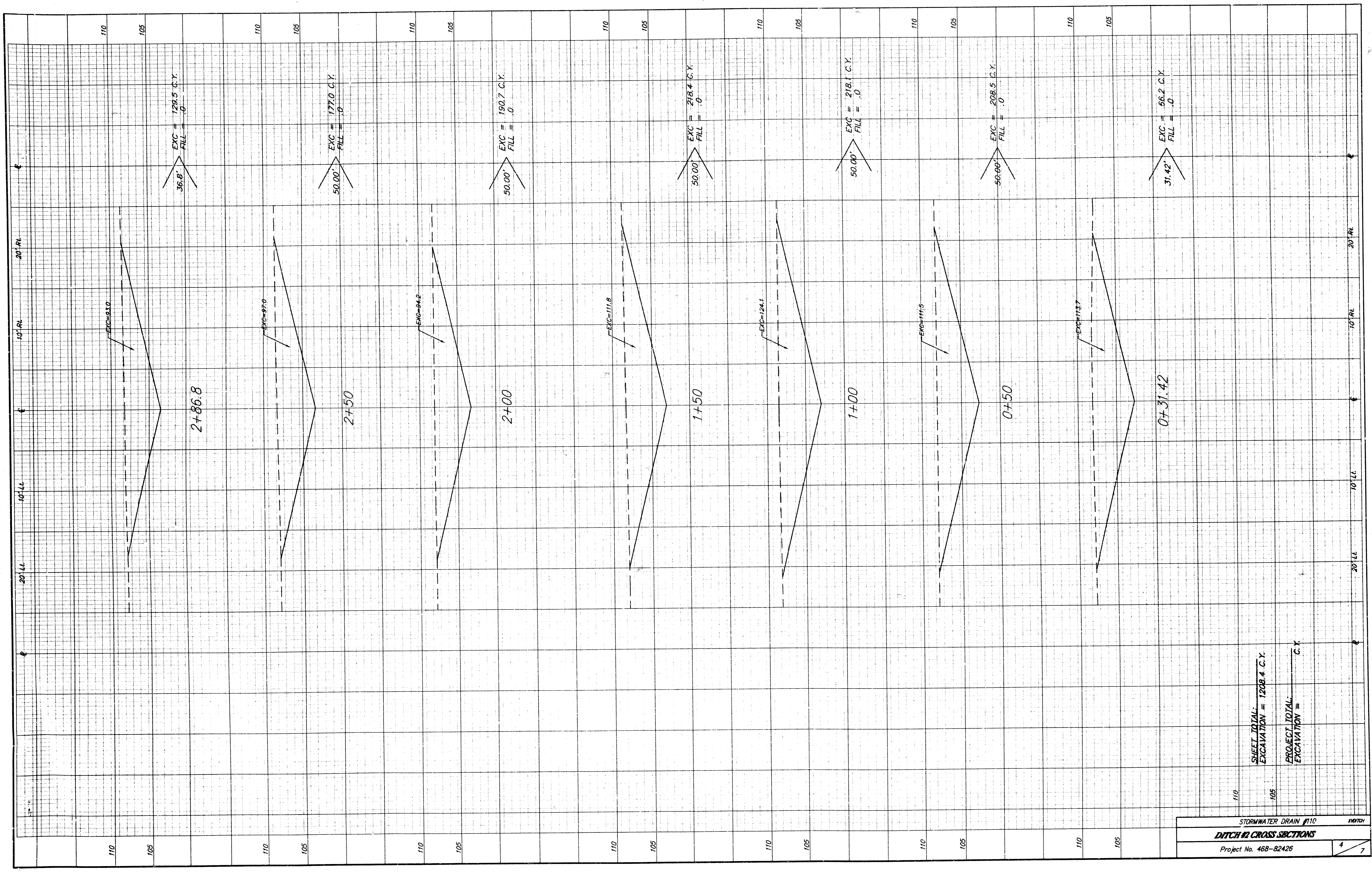
DATE	9-15-95	UTILITY	TCR	SRB JOB	280E
DESIGN	TCR	REVIEW			

DATE PLOTTED: 9-15-95

SCALE: 1/8" = 1'-0"

3

7



36.8' EXC = 129.5 C.Y.
FILL = .0

50.00' EXC = 177.0 C.Y.
FILL = .0

50.00' EXC = 190.7 C.Y.
FILL = .0

50.00' EXC = 218.4 C.Y.
FILL = .0

50.00' EXC = 218.1 C.Y.
FILL = .0

50.00' EXC = 208.5 C.Y.
FILL = .0

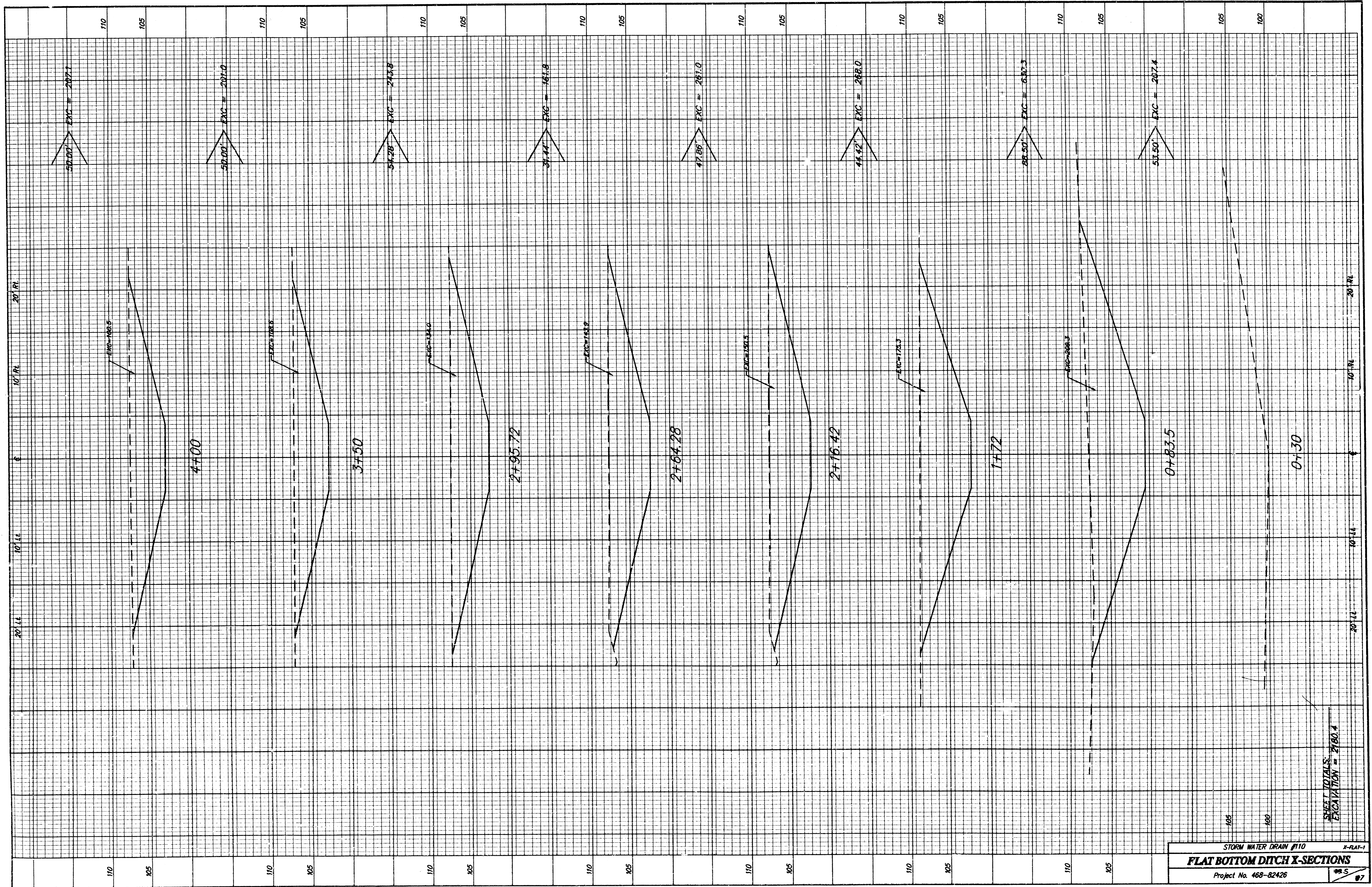
31.42' EXC = 66.2 C.Y.
FILL = .0

SHEET TOTAL:
EXCAVATION = 1208.1 C.Y.

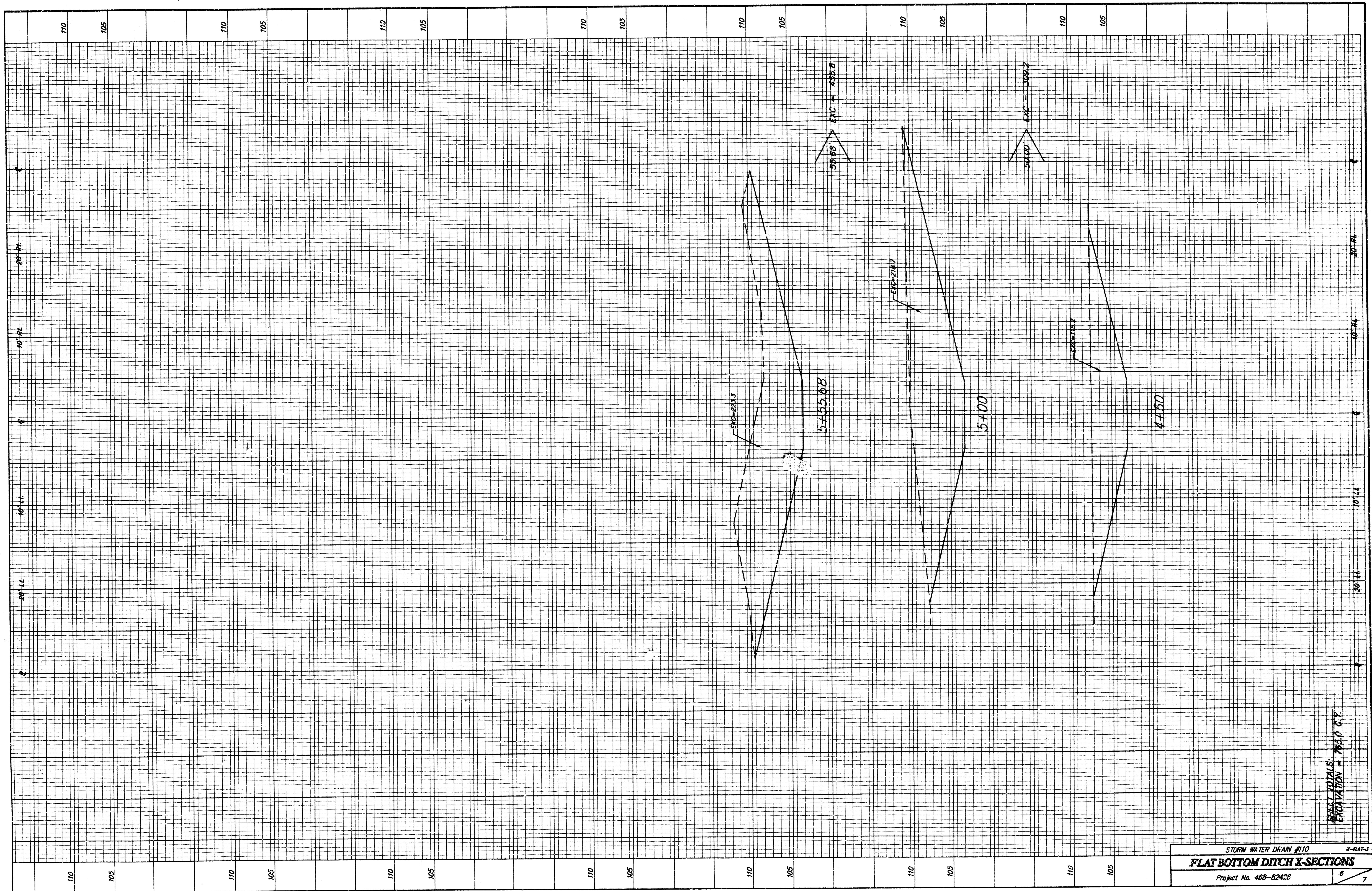
PROJECT TOTAL:
EXCAVATION = C.Y.

STORMWATER DRAIN #110
DITCH #2 CROSS SECTIONS

Project No. 46B-82426



SHEET TOTALS
EXCAVATION = 2180.4

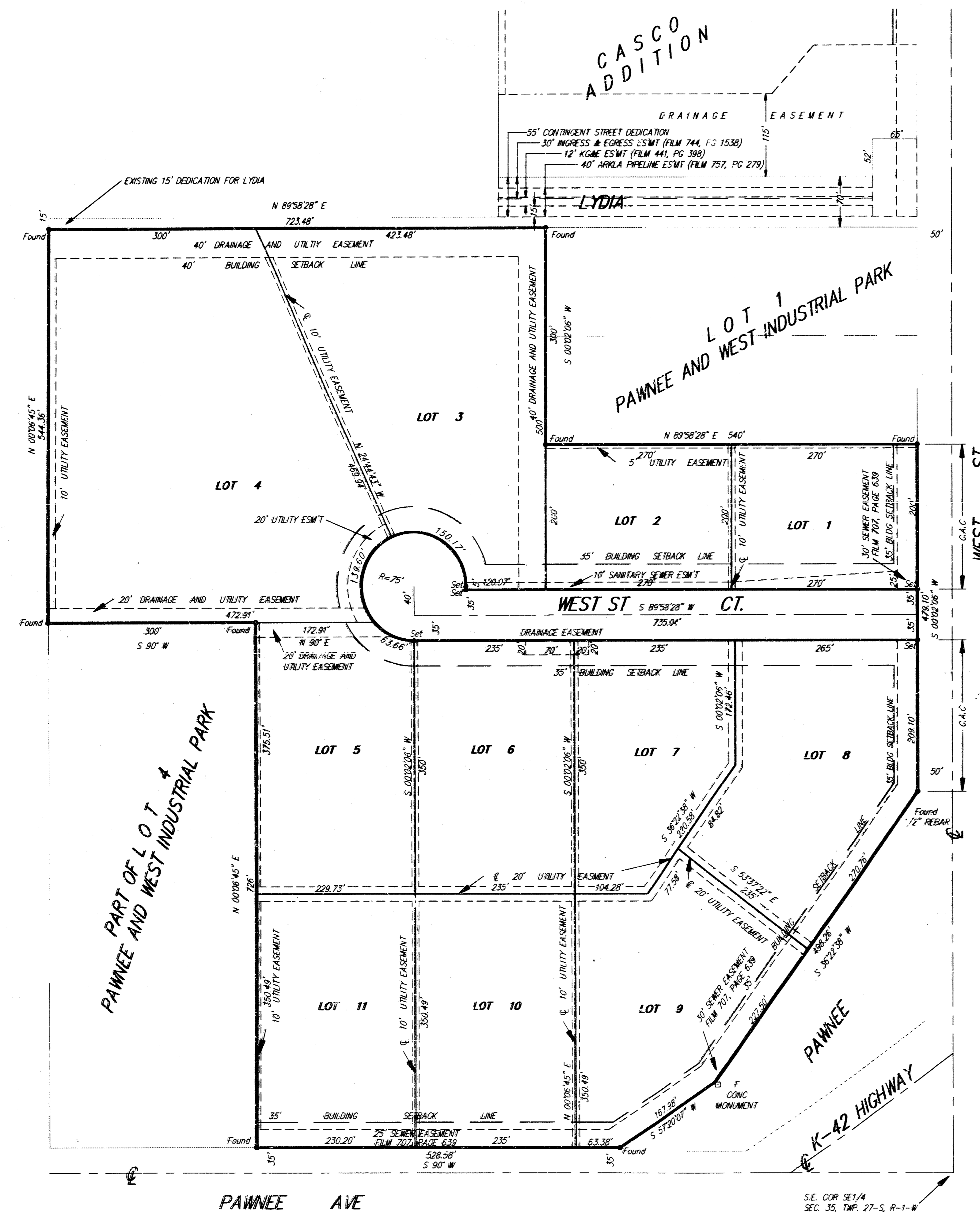


STORM WATER DRAIN #110 X-FLAT-2
FLAT BOTTOM DITCH X-SECTIONS
 Project No. 468-82436

NET TOTALS
 EXCAVATION = 744.0 C.Y.

PAWNEE AND WEST INDUSTRIAL PARK SECOND ADDITION

WICHITA, SEDGWICK COUNTY, KANSAS



1" = 100'
 • 1/2" Rebar w/SRB Cap; Set
 • 1/2" Rebar w/SRB Cap; Found
 C.A.C. = Complete Access Control

State of Kansas) SS
 Sedgwick County)

We, Savoy, Ruggles & Bohm, P.A., Surveyors in aforesaid county and state do hereby certify that, under the supervision of the undersigned, we have surveyed and platted "PAWNEE AND WEST INDUSTRIAL PARK SECOND ADDITION", Wichita, Sedgwick County, Kansas and that the accompanying plat is a true and correct exhibit of the property surveyed, described as

All of Lots 2, 3 and 4, except the south 726 feet of said Lot 4, Pawnee and West Industrial Park, Wichita, Sedgwick County, Kansas.

All being situated in the SE1/4, Sec. 35, Twp. 27-S, R-1-W of the 6th P.M., Sedgwick County, Kansas.

Existing public easements and dedications being vacated by virtue of KSA 12-512(b).

Savoy, Ruggles & Bohm, P.A.

Date _____

 Mark A. Savoy
 L.S. #788
 Surveyor

Know all men by these presents that we, the undersigned, have caused the land described in the surveyors certificate to be platted into Lots and Streets to be known as "PAWNEE AND WEST INDUSTRIAL PARK SECOND ADDITION", Wichita, Sedgwick County, Kansas. The utility easements are hereby granted as indicated for the construction and maintenance of all public utilities. The drainage and utility easements are hereby granted as indicated for drainage purposes and for the construction and maintenance of all public utilities. The sanitary sewer easement is hereby granted as indicated for the construction and maintenance of sanitary sewer. Access controls are hereby granted as indicated on the face of the plat to the appropriate governing body with the location of the openings being subject to the approval of the Engineer of the appropriate governing body.

 John Dugan

 Marilyn Dugan

State of Kansas) SS
 Sedgwick County)

The foregoing instrument acknowledged before me, this _____ day of _____ 1995, by John Dugan and Marilyn Dugan, husband and wife.

 Notary Public

My App'l. Exp. _____

This plat of "PAWNEE AND WEST INDUSTRIAL SECOND ADDITION", Wichita, Sedgwick County, Kansas, has been submitted to and approved by the Wichita-Sedgwick County Metropolitan Area Planning Commission, Wichita, Kansas. Dated this _____ day of _____, 1995.

Wichita-Sedgwick County Metropolitan Area Planning Commission

 John McKay, Jr.
 Chairman

 Marvin S. Krout
 Secretary

This plat approved and all dedications shown hereon, accepted by the City Council of the City of Wichita, Kansas, this _____ day of _____, 1995.

 Elmo Broadfoot
 Mayor

 Pat Burnett
 City Clerk

Entered on transfer record this _____ day of _____, 1995

 Susan E. Crockett-Spoon
 County Clerk

State of Kansas) SS
 Sedgwick County)

This is to certify that this plat has been filed for record in the office of the Register of Deeds, this _____ day of _____ 1995, at _____ o'clock _____ M. and is duly recorded.

 Pat Kettler
 Register of Deeds

 Ed Resa
 Deputy

SRB 924 NORTH MAIN 316-264-8008 472-8254
 WICHITA, KANSAS 67203 FAX 264-4621
SAVOY, RUGGLES & BOHM, P.A.
 ENGINEERING & SURVEYING

DWG FILE: 00246P-B.D.P.
 PROJECT NO. 95A00246P