

CONSTRUCTION PLANS FOR STORM WATER DRAIN #122 DETENTION POND TO SERVE ABERDEEN 2ND ADDITION TO THE CITY OF WICHITA, KANSAS

MICHAEL E. LINDEBAK, P.E. - CITY ENGINEER

PROJECT NO. 468-82626

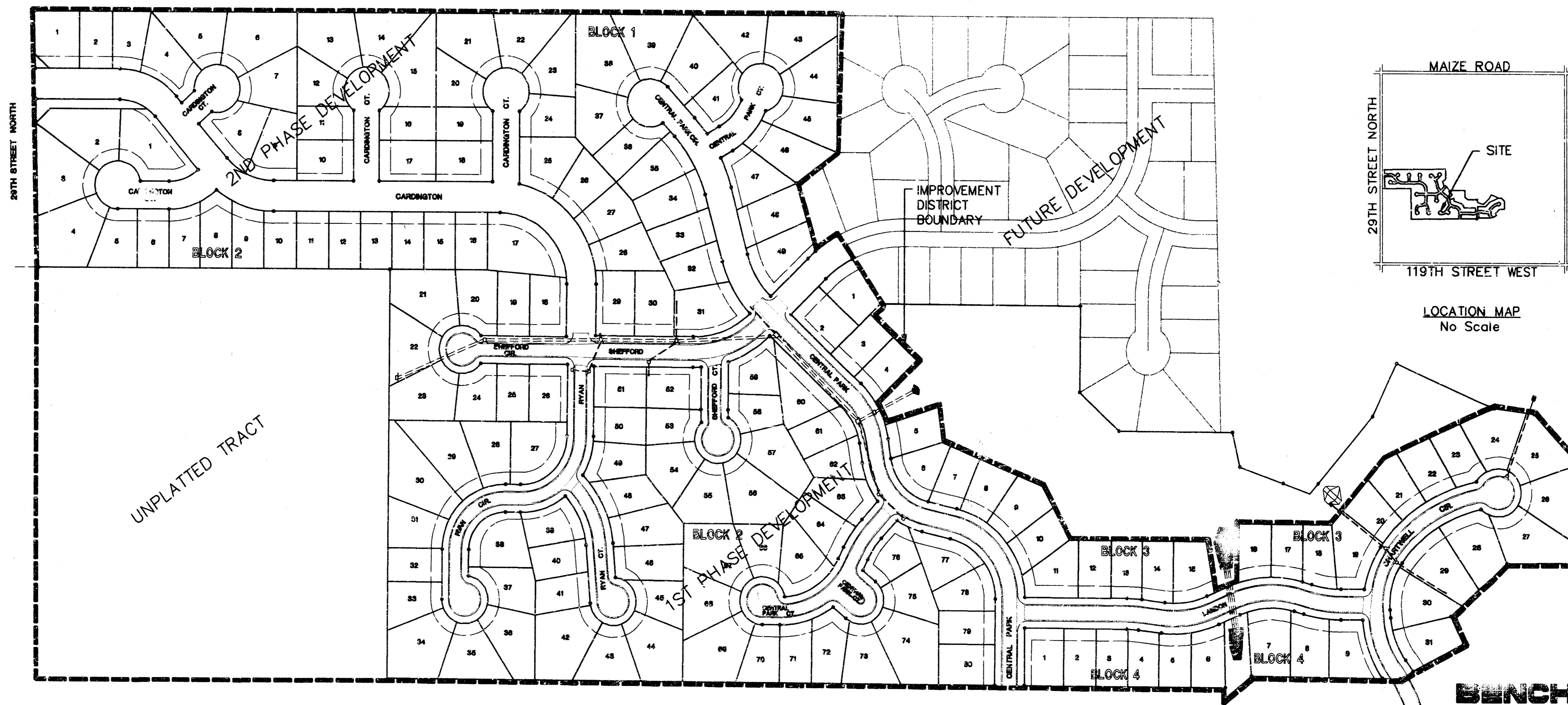
INDEX CODE 750984

GENERAL NOTES:

- Utility service lines, poles, valve boxes, meters and etc. are to be adjusted as necessary by others prior to construction unless the plans specifically call for their adjustment by the Contractor. Existing utilities and their location, as shown on the plans, represent the best information obtainable for design. The Contractor will be required to work around existing utilities within the right-of-way which do not conflict with proposed.
- Waste material generated from this grading operation shall be wasted within areas shown on these plans.
All disposal sites must be approved by the Kansas Department of Health and Environment. Material either stockpiled or disposed of in a flood plain would require a Kansas State Board of Agriculture permit. Any material dumped in waters of the United States or wetlands is subject to U.S. Corps. of Engineers permitting regulations. Any material buried or stockpiled beyond approved construction limits would require additional archaeological investigations unless buried in a previously approved borrow.
- Contractor to grade this site to the line and grade as shown on these plans. Earthwork to balance unless otherwise noted.
- The Contractor shall be responsible for preserving property irons. The Contractor will be required to reestablish any property irons which are damaged or destroyed by his construction operations. Such irons shall be reestablished by a licensed land surveyor in accordance with state laws.
- Trees are to be removed as needed. The cost is subsidiary to project.
- All disturbed areas within street right-of-ways shall be seeded with temporary ryegrass within 14 days of disturbance at a rate of 200 lbs. per acre. See Storm Water Pollution Prevention Plan.

INDEX

| | |
|---------------------------------|-----------|
| TITLE SHEET | SHEET 1 |
| DETENTION POND STRUCTURE DETAIL | SHEET 2 |
| DETENTION POND GRADING PLANS | SHEET 3-4 |
| WASTE AREA PLANS | SHEET 5-6 |
| CHANNEL GRADING DETAIL | SHEET 7 |

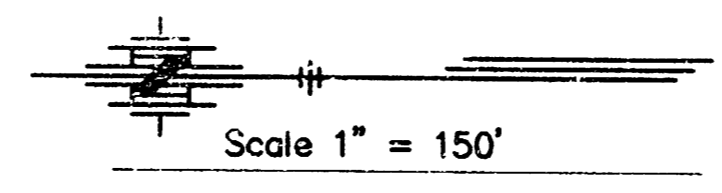


*BOOKED
12-12-97
MCA
D-370*

(POND GRADING) EARTHWORK SUMMARY:

| | |
|------------|---------------|
| EXCAVATION | 92,915 C.YDS. |
| EXPORT | 92,915 C.YDS. |

NOTE: SEE WASTE AREA PLANS FOR DISPOSAL AND PLACEMENT OF EXCESS MATERIAL



JANUARY 1997

PLANS PREPARED

BY

P.O.E. & ASSOCIATES OF KANSAS, INC.
CONSULTING ENGINEERS

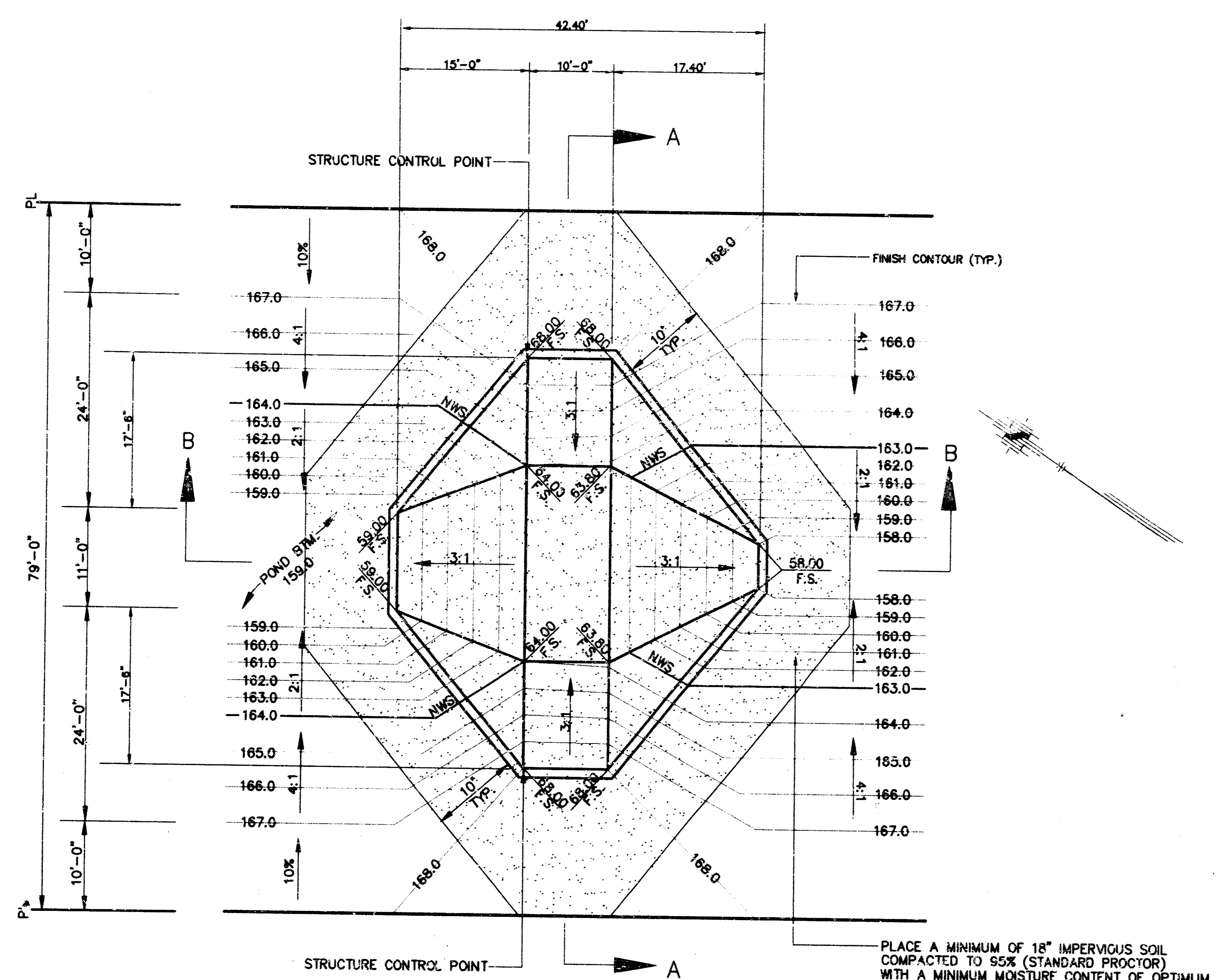
5840 E. Central Suite 200 ■ Wichita KS 67208 ■ 316/865-4114



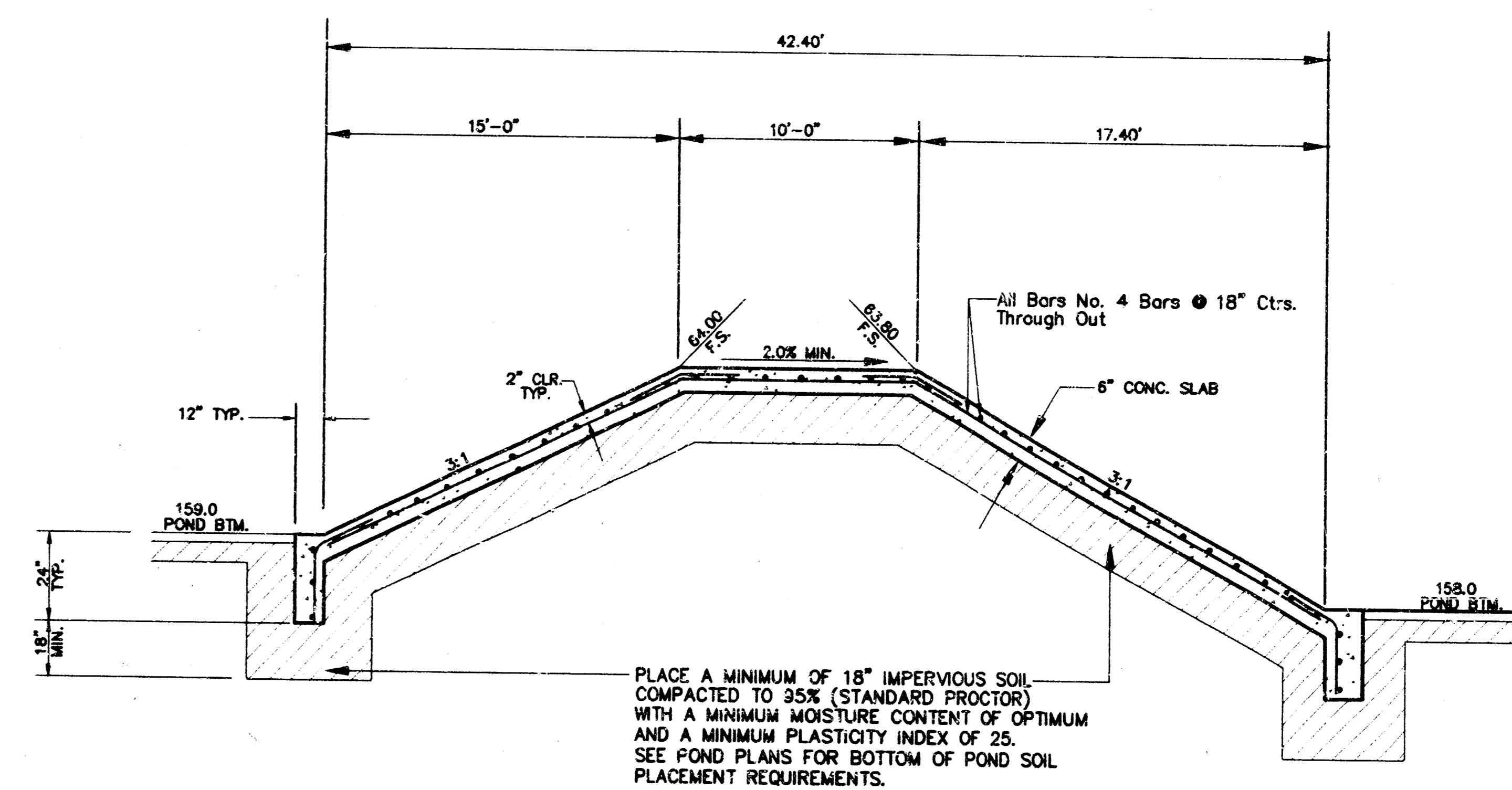
5/14/97

BENCH MARKS

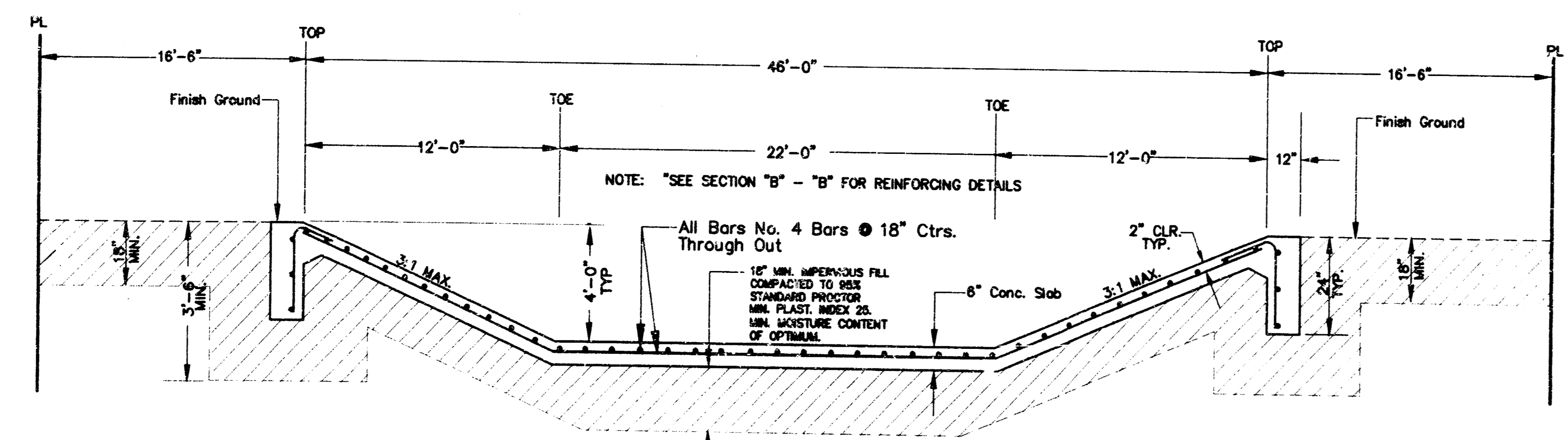
- (City of Wichita Datum)
- City of Wichita Benchmark disc, 67' south of centerline 21st St. & 79' south of section line, and 46' east of centerline 119th St. Elev. 172.08
 - 80a nail in power pole, 30' east and 50' south of Northwest Corner of Government Lot 6 in SW Quarter of Section 6, T27S, R1W. Elev. 172.08
 - 80d nail in power pole 50' south of NE corner of Government Lot 3 in NW Quarter of Section 6, T27S, R1W. Elev. 179.98
 - 80d nail in power pole 40' west and 40' north of the NW Corner of the NW Corner of Sec. 6, T27S, R1W. Elev. 175.05



PLAN
SCALE: 1"=10'
SEE DETENTION POND GRADING PLANS FOR
ADDITIONAL GRADING DETAILS



SECTION B-B
n.t.s.



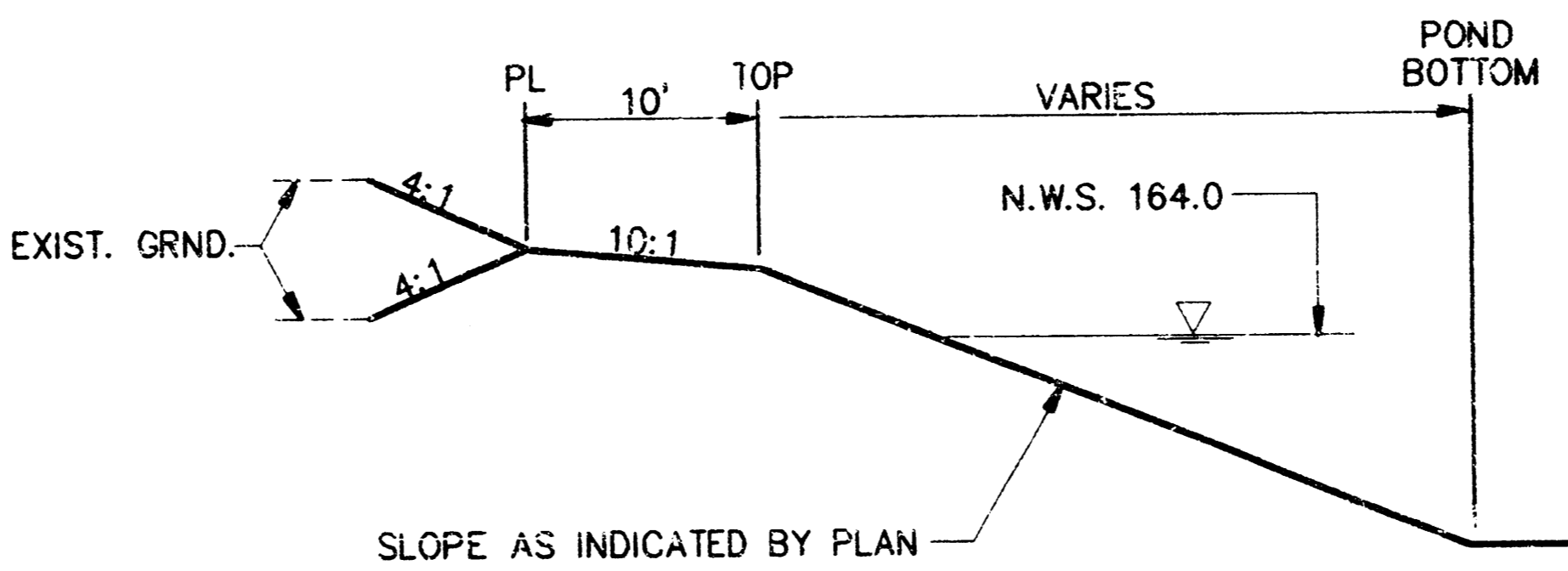
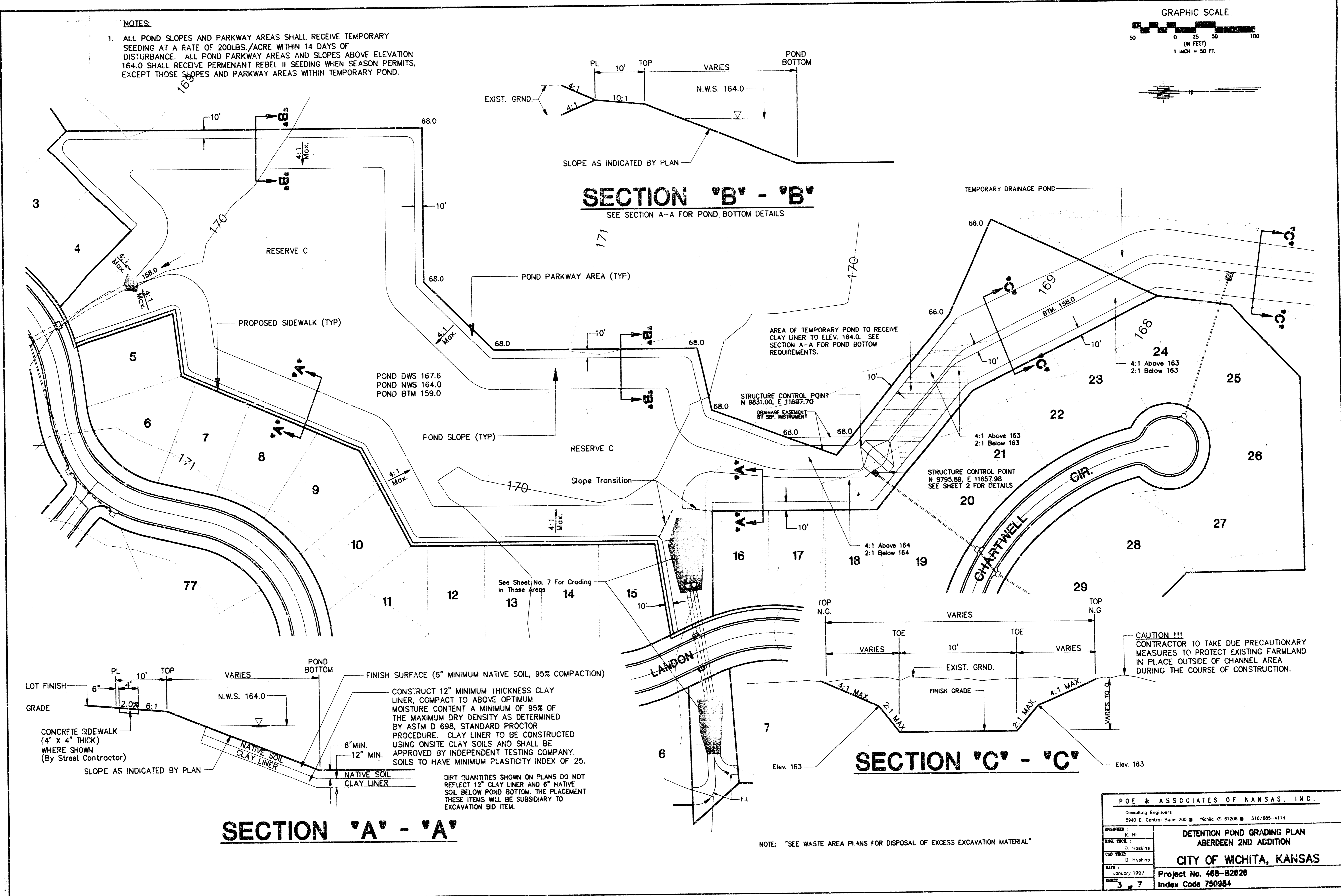
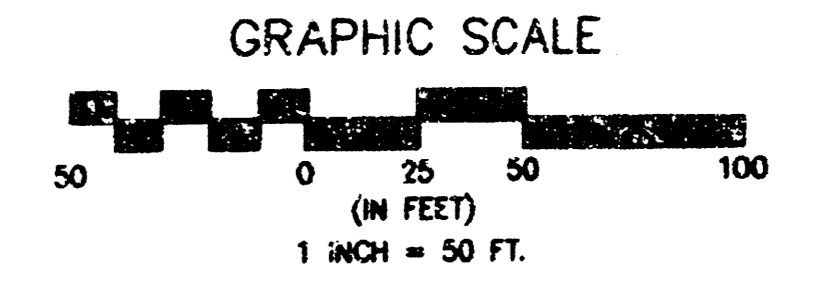
SECTION A-A
n.t.s.

- NOTE:
1. All Concrete to be 6 sack City Paving Mix.
 2. All Exposed Concrete Edges To Have 3/4" - 45° Chamfer.
 3. All Exposed Concrete Surfaces To Be Hand Rubbed.
 4. All steel bars to be #4 bars @ 18" ctrs unless noted otherwise.
 5. All reinforcing splices shall be with #4 bars and minimum overlap of reinforcing steel shall be 24 inches.

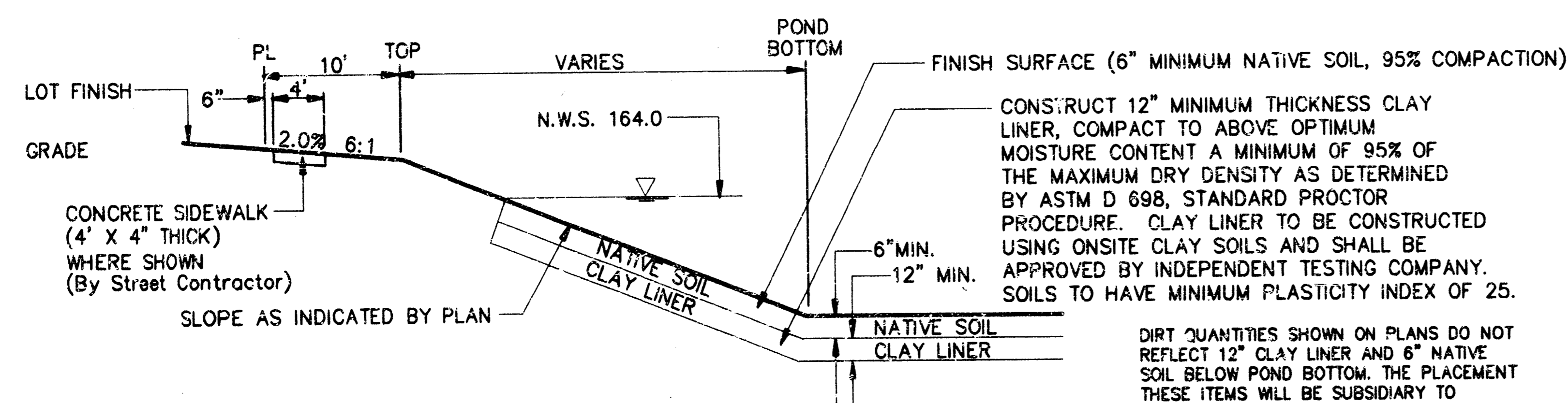
| | |
|--|---|
| POE & ASSOCIATES OF KANSAS, INC. Consulting Engineers 5940 E. Central Suite 200 ■ Wichita KS 67208 ■ 316/685-4114 | |
| DESIGNER: K. Hill | DETENTION POND CONTROL STRUCTURE ABERDEEN 2ND ADDITION CITY OF WICHITA, KANSAS |
| ENG. CHECK: D. Hoskins | Project No. 472-82751 |
| CIV. CHECK: D. Hoskins | Index Code 750984 |
| DATE: January 1997 | 2 of 7 |

NOTES:

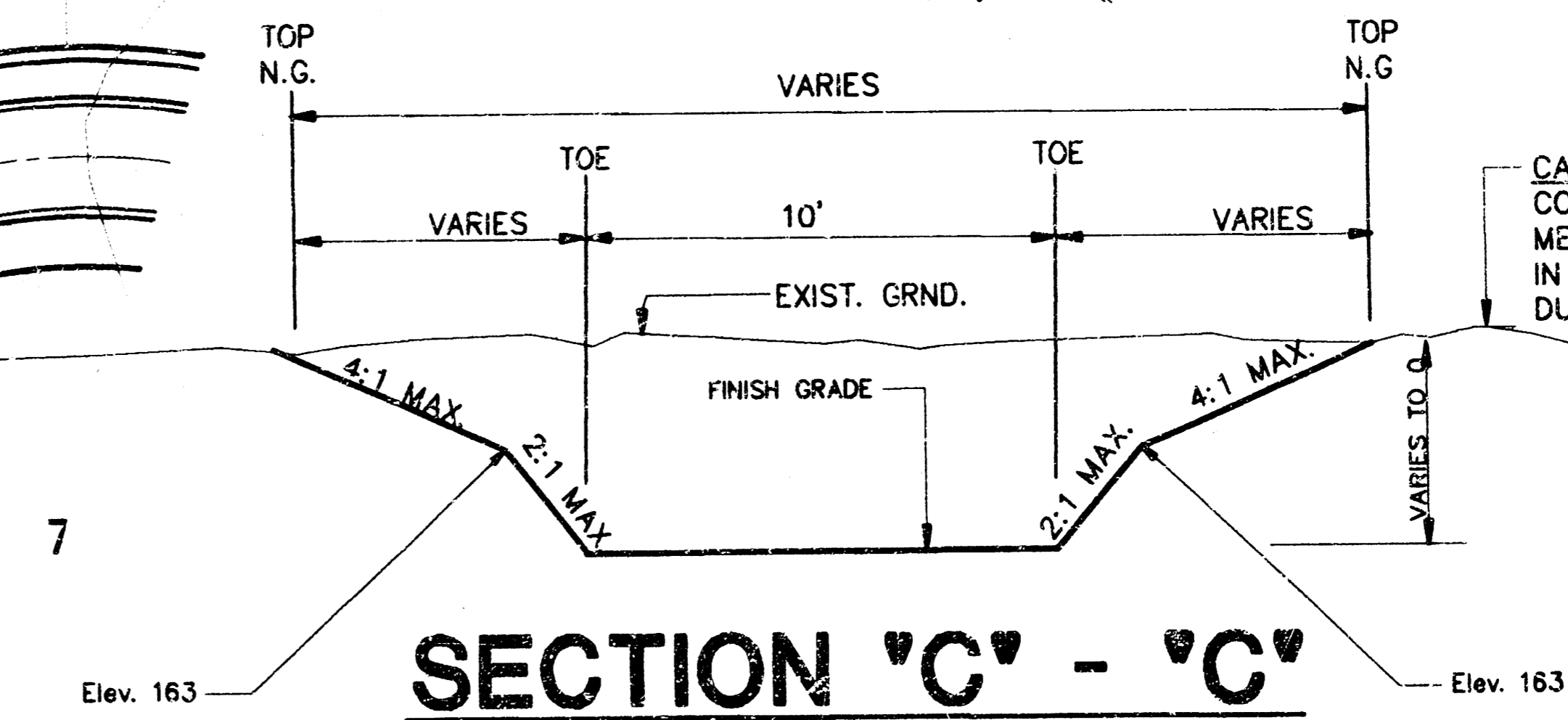
1. ALL POND SLOPES AND PARKWAY AREAS SHALL RECEIVE TEMPORARY SEEDING AT A RATE OF 200LBS./ACRE WITHIN 14 DAYS OF DISTURBANCE. ALL POND PARKWAY AREAS AND SLOPES ABOVE ELEVATION 164.0 SHALL RECEIVE PERMANENT REBEL II SEEDING WHEN SEASON PERMITS, EXCEPT THOSE SLOPES AND PARKWAY AREAS WITHIN TEMPORARY POND.



SECTION 'B' - 'B'
SEE SECTION A-A FOR POND BOTTOM DETAILS



SECTION 'A' - 'A'



SECTION 'C' - 'C'

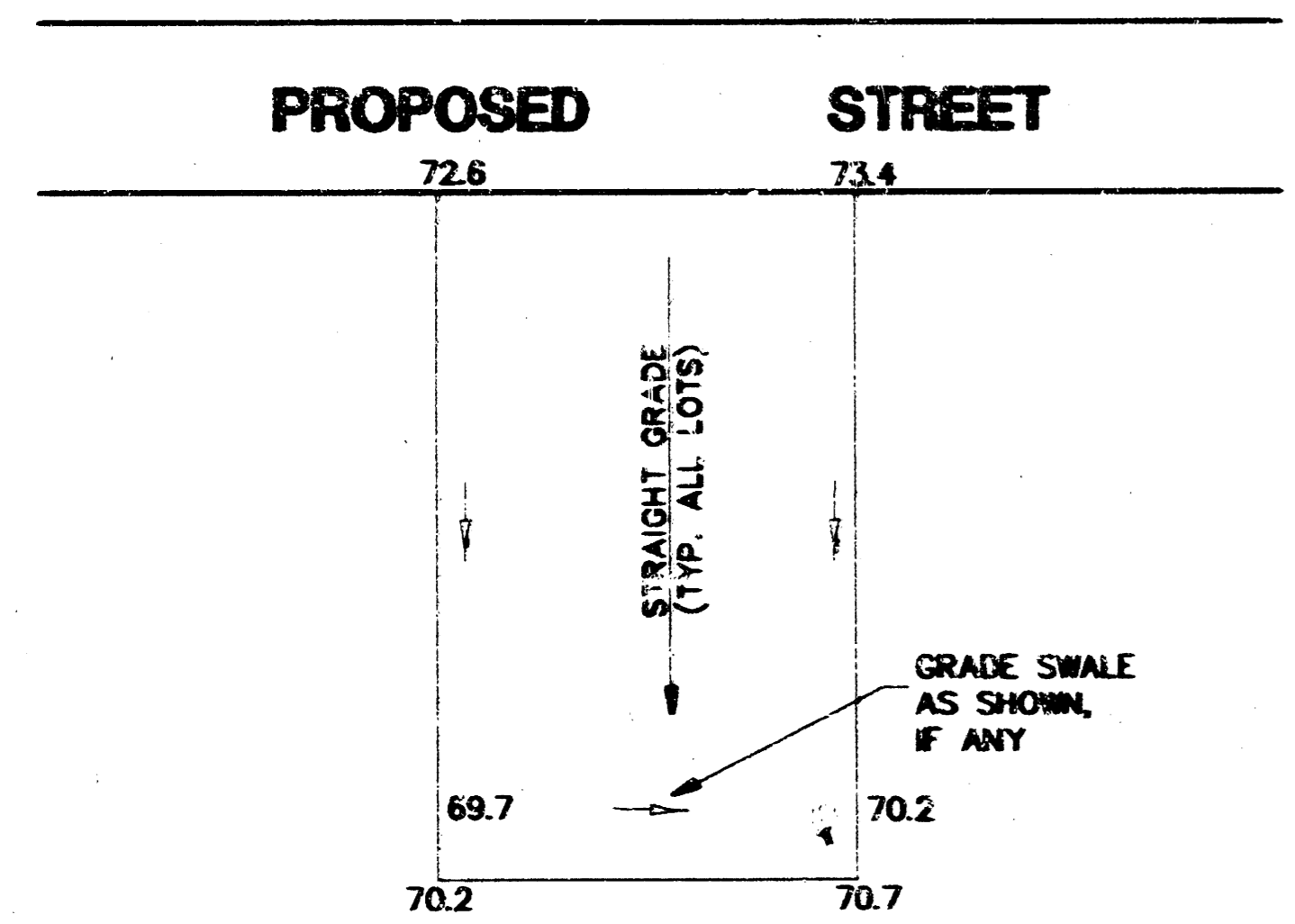
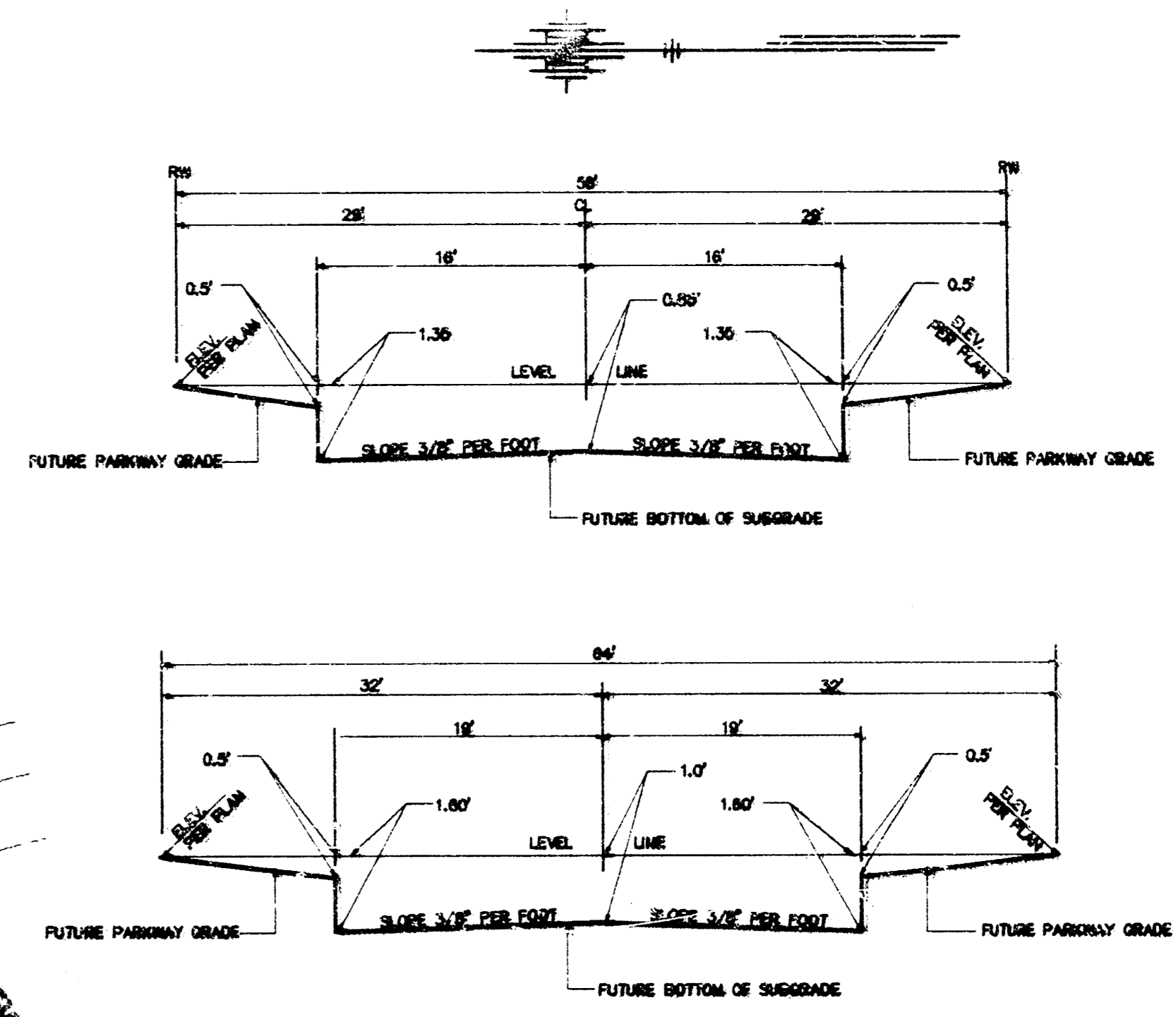
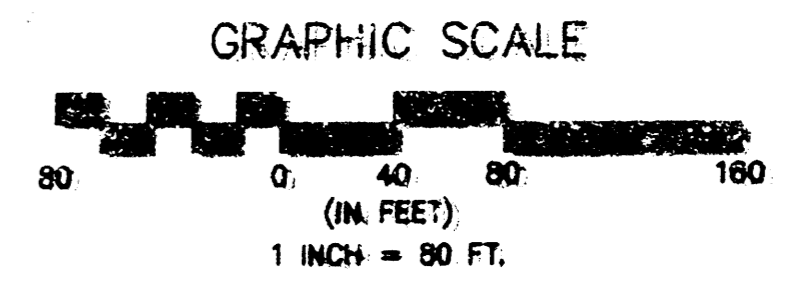
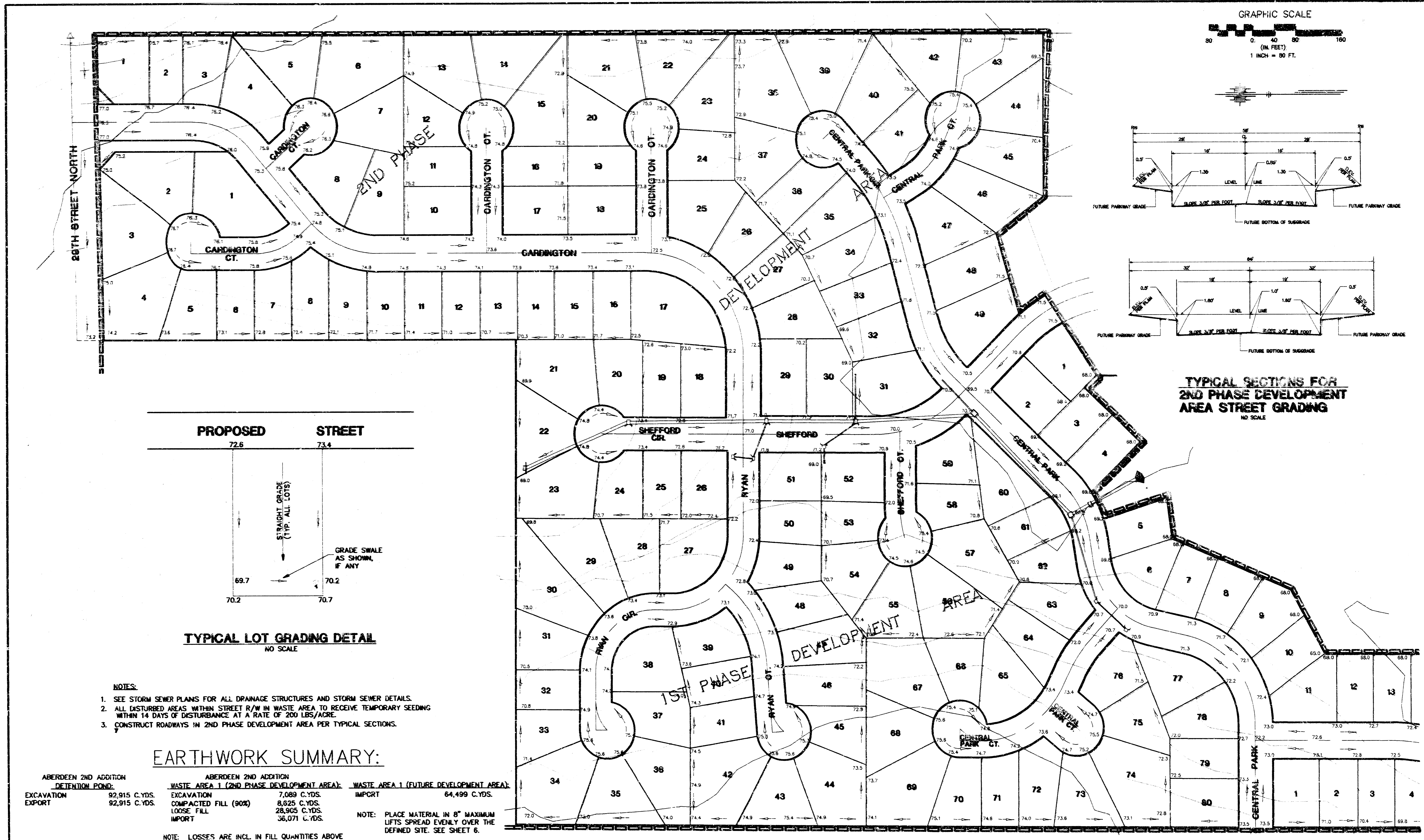
CONSTRUCT 12" MINIMUM THICKNESS CLAY LINER, COMPACT TO ABOVE OPTIMUM MOISTURE CONTENT A MINIMUM OF 95% OF THE MAXIMUM DRY DENSITY AS DETERMINED BY ASTM D 698, STANDARD PROCTOR PROCEDURE. CLAY LINER TO BE CONSTRUCTED USING ONSITE CLAY SOILS AND SHALL BE APPROVED BY INDEPENDENT TESTING COMPANY. SOILS TO HAVE MINIMUM PLASTICITY INDEX OF 25.

DIRT QUANTITIES SHOWN ON PLANS DO NOT REFLECT 12" CLAY LINER AND 6" NATIVE SOIL BELOW POND BOTTOM. THE PLACEMENT THESE ITEMS WILL BE SUBSIDIARY TO EXCAVATION BID ITEM.

CAUTION !!!
CONTRACTOR TO TAKE DUE PRECAUTIONARY MEASURES TO PROTECT EXISTING FARMLAND IN PLACE OUTSIDE OF CHANNEL AREA DURING THE COURSE OF CONSTRUCTION.

NOTE: "SEE WASTE AREA PLANS FOR DISPOSAL OF EXCESS EXCAVATION MATERIAL"

| | |
|--|---|
| P.O.E. & ASSOCIATES OF KANSAS, INC. Consulting Engineers 5940 E. Central Suite 200 ■ Wichita KS 67208 ■ 316/685-4114 | |
| ENGINEER: K. Hill | DETENTION POND GRADING PLAN ABERDEEN 2ND ADDITION CITY OF WICHITA, KANSAS |
| CIVIL ENGINEER: D. Hoskins | Project No. 468-82626 Index Code 750984 |
| DATE: January 1997 | SHEET: 3 of 7 |



TYPICAL LOT GRADING DETAIL
NO SCALE

- NOTES:
- SEE STORM SEWER PLANS FOR ALL DRAINAGE STRUCTURES AND STORM SEWER DETAILS.
 - ALL DISTURBED AREAS WITHIN STREET R/W IN WASTE AREA TO RECEIVE TEMPORARY SEEDING WITHIN 14 DAYS OF DISTURBANCE AT A RATE OF 200 LBS/ACRE.
 - CONSTRUCT ROADWAYS IN 2ND PHASE DEVELOPMENT AREA PER TYPICAL SECTIONS.

EARTHWORK SUMMARY:

| ABERDEEN 2ND ADDITION RETENTION POND: | | ABERDEEN 2ND ADDITION WASTE AREA 1 (2ND PHASE DEVELOPMENT AREA): | | WASTE AREA 1 (FUTURE DEVELOPMENT AREA): | |
|--|---------------|---|---------------|---|---------------|
| EXCAVATION | 92,915 C.YDS. | EXCAVATION | 7,089 C.YDS. | IMPORT | 64,499 C.YDS. |
| EXPORT | 92,915 C.YDS. | COMPACTED FILL (90%) | 8,625 C.YDS. | | |
| | | LOOSE FILL | 28,905 C.YDS. | | |
| | | IMPORT | 36,071 C.YDS. | | |

NOTE: LOSSES ARE INCL. IN FILL QUANTITIES ABOVE. SEE ROAD GRADING SECTIONS FOR GRADING DETAILS WITHIN ROADWAY. COMPACTED FILL WITHIN R/W TO BE COMPACTED TO 90%.

EXCAVATION OF 7,089 C. YDS. AND COMPACTED FILL OF 8,625 C. YDS. SHOWN ABOVE IS NOT INCLUDED IN POND BID EXCAVATION ITEM AND SHALL BE SUBSIDIARY TO POND PROJECT COSTS.

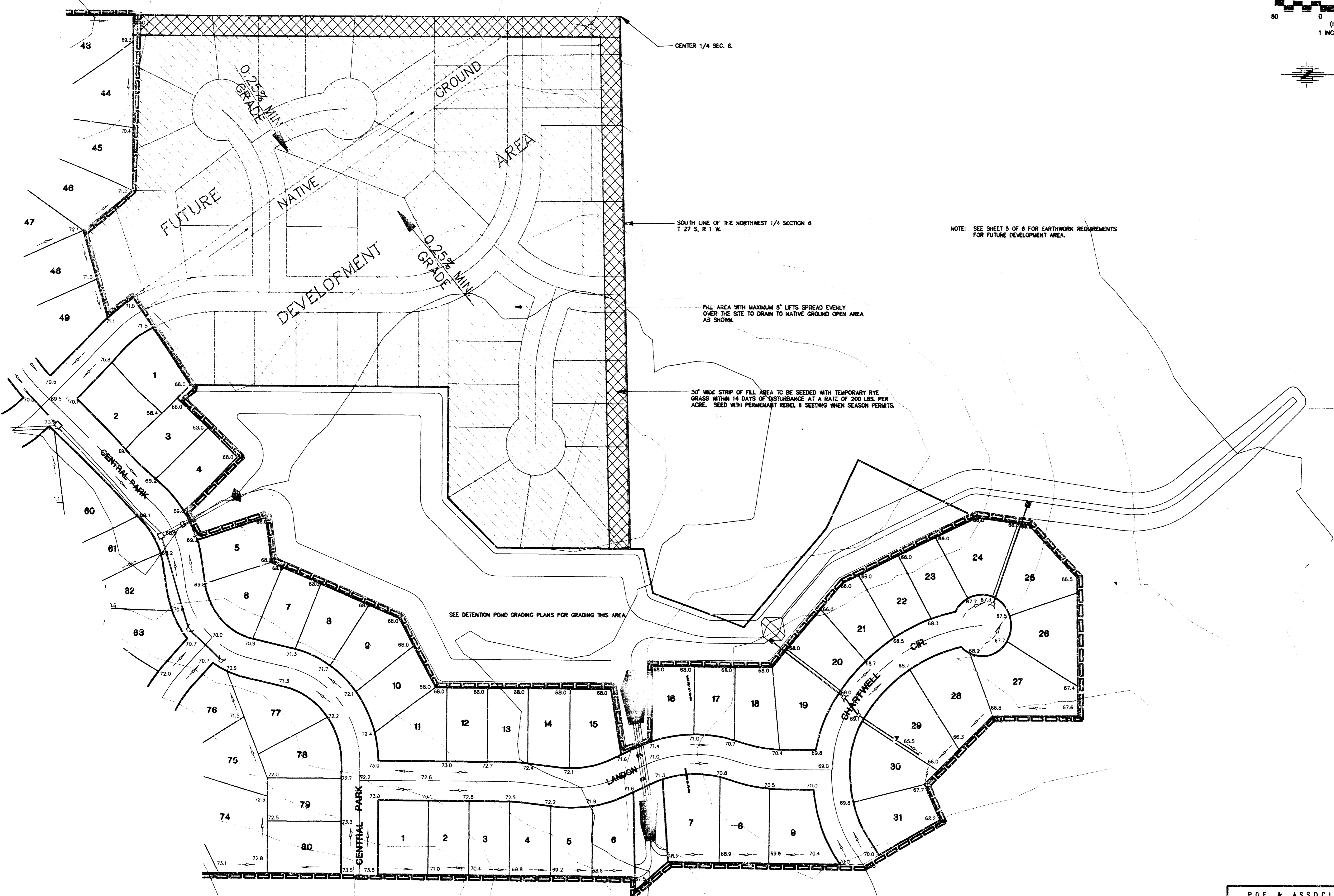
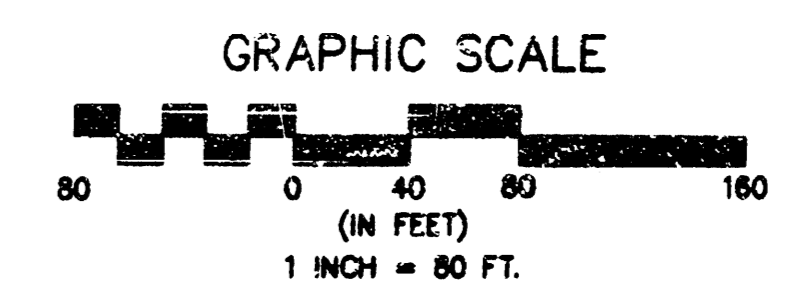
NOTE: PLACE MATERIAL IN 6" MAXIMUM LIFTS SPREAD EVENLY OVER THE DEFINED SITE. SEE SHEET 6.

PDE & ASSOCIATES OF KANSAS, INC.
Consulting Engineers
5840 E. Central Suite 200 Wichita KS 67206 316/685-4114

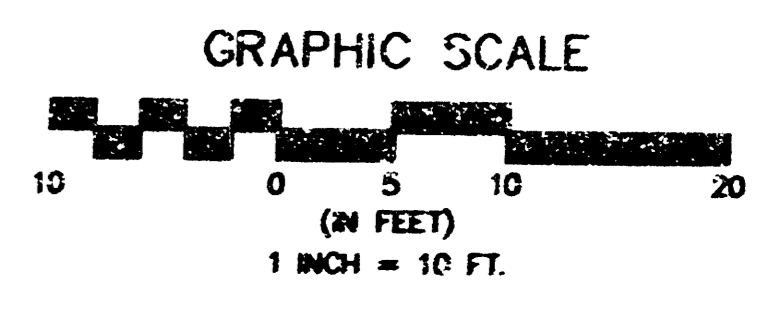
ENGINEER: K. Hill
INCHARGE: D. Hoskins
CAD DESK: D. Hoskins
DATE: January 1997
SHEET: 5 of 7

**WASTE AREA PLANS
ABERDEEN 2ND ADDITION
CITY OF WICHITA, KANSAS**
Project No. 468-82628
Index Code 750284

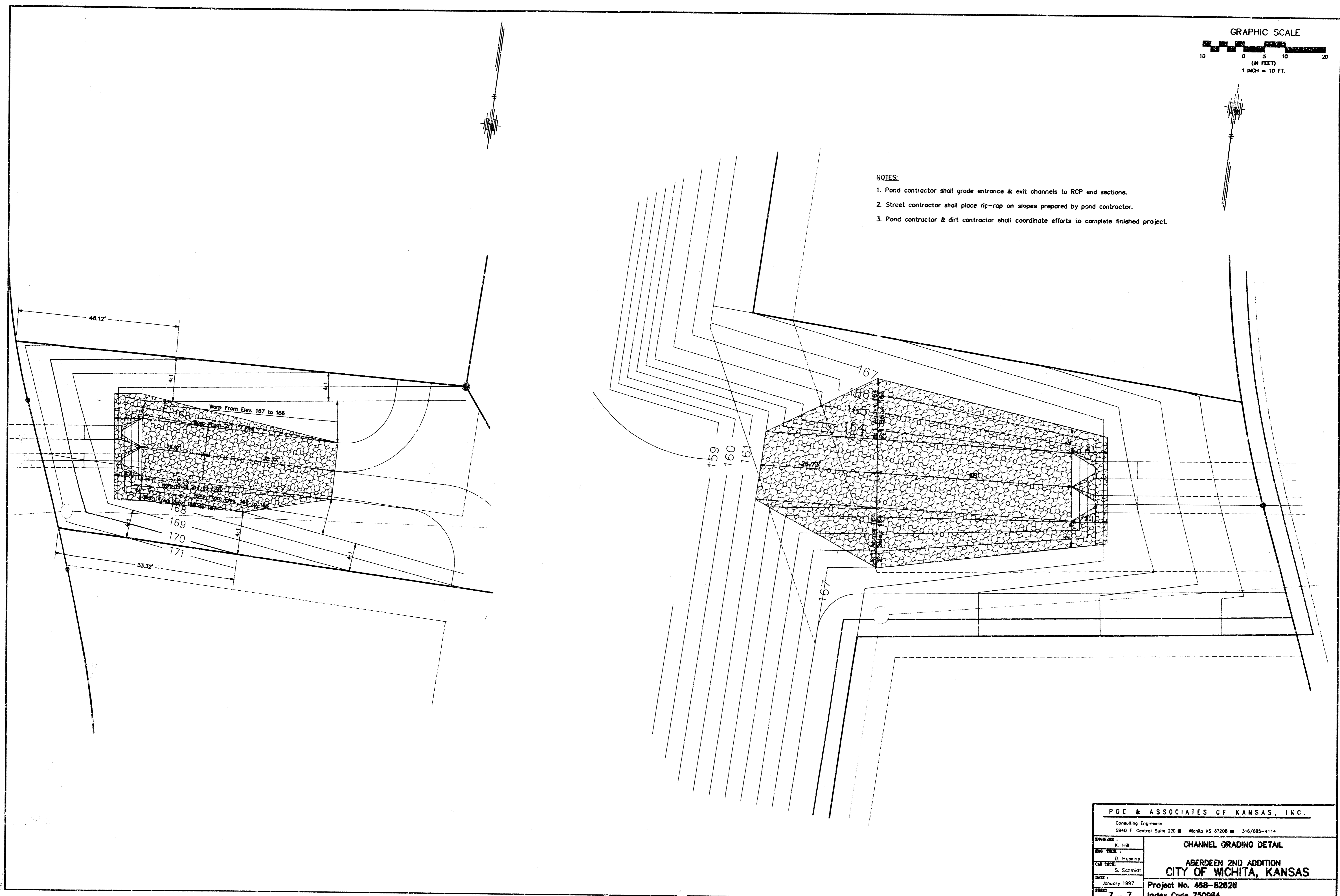
E:\APR97\WASTE\BASE-57.Tue May 13 10:24:30 1997 Steve Scheidt Pde & Assoc.



| | |
|---|--|
| PDE & ASSOCIATES OF KANSAS, INC. | |
| Consulting Engineers 5940 E. Central Suite 200 ■ Wichita KS 67208 ■ 316/685-4114 | |
| ENGINEER: K. Hill | WASTE AREA PLANS ABERDEEN 2ND ADDITION CITY OF WICHITA, KANSAS |
| NO. TECH: D. Hoskins | |
| CAD TECH: D. Hoskins | Project No. 488-82826 Index Code 750684 |
| DATE: January 1997 | |
| SHEET: 6 of 7 | |



- NOTES:**
1. Pond contractor shall grade entrance & exit channels to RCP end sections.
 2. Street contractor shall place rip-rap on slopes prepared by pond contractor.
 3. Pond contractor & dirt contractor shall coordinate efforts to complete finished project.



F:\APPS\DCAP\585\BASE-ST\ Tue May 13 09:08 01 1997 Steve Schmidt-Poe & Assoc.

| | |
|--|---|
| POE & ASSOCIATES OF KANSAS, INC. Consulting Engineers 5940 E. Central Suite 200 ■ Wichita KS 67208 ■ 316/685-4114 | |
| ENGINEER: K. Hill | CHANNEL GRADING DETAIL ABERDEEN 2ND ADDITION CITY OF WICHITA, KANSAS |
| DRAWN BY: D. Hoskins | |
| CHECKED BY: S. Schmidt | Project No. 488-82828 Index Code 750984 |
| DATE: January 1997 | |
| SHEET: 7 of 7 | |

2-P-5-B1