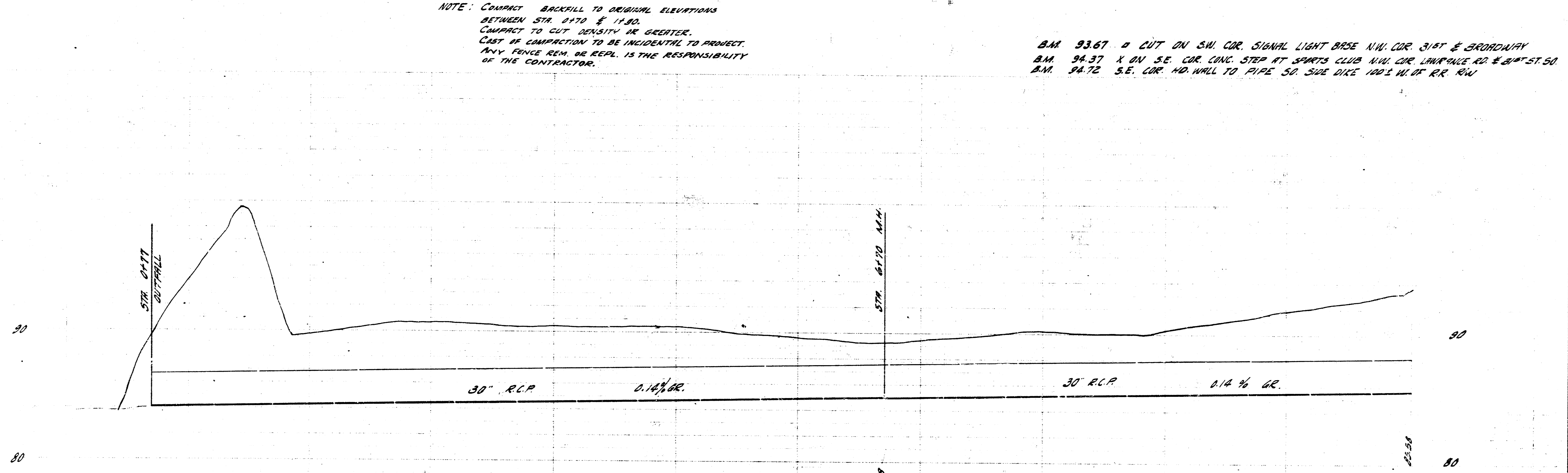
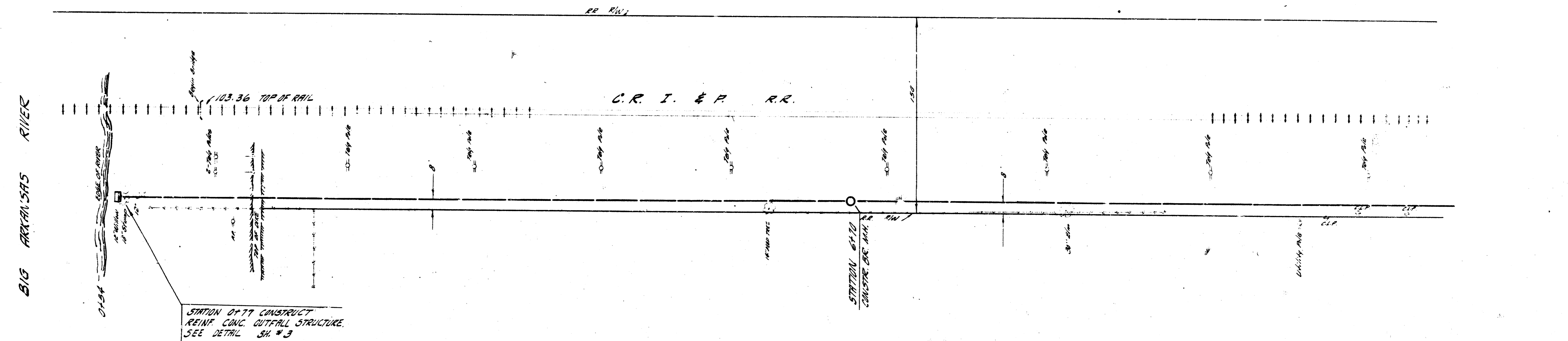


Checked by [unclear] 04/10/17  
Designed by [unclear]

PLAN SCALE 1" = 40'  
PROFILE SCALE 1" = 40' HOR., 1" = 4' VERT.



**DRAINAGE**  
31" ST. 50.  
W. SO. LAWRENCE RD. TO E.L. BRADWAY  
CITY OF WICHITA, KANSAS

B.E. SMITH, CITY ENGINEER  
DATE PROJ. NO. C18-17

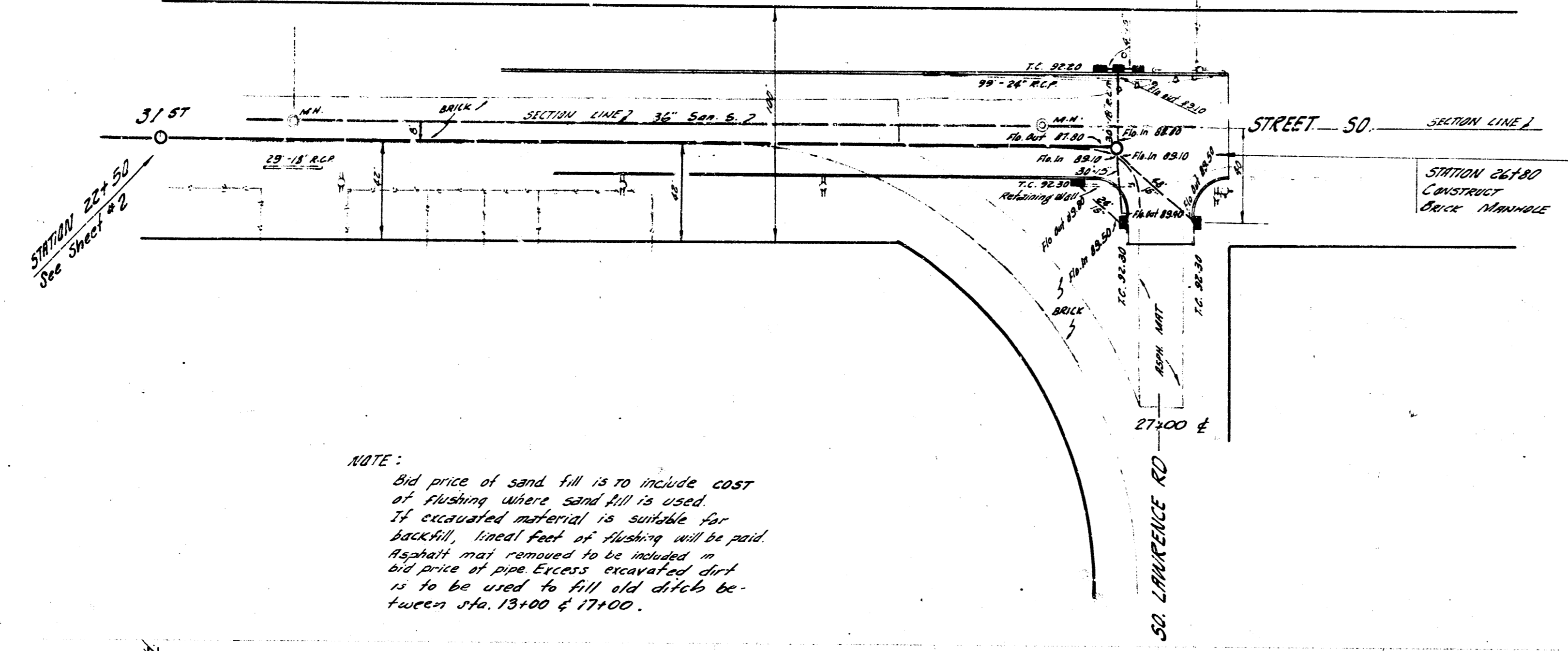
1/3



B.M. 34.37' X IN S.E. COR CONC STEP AT SPORTSMAN'S CLUB W.N. COR LAWRENCE RD.  
31ST ST. 50.



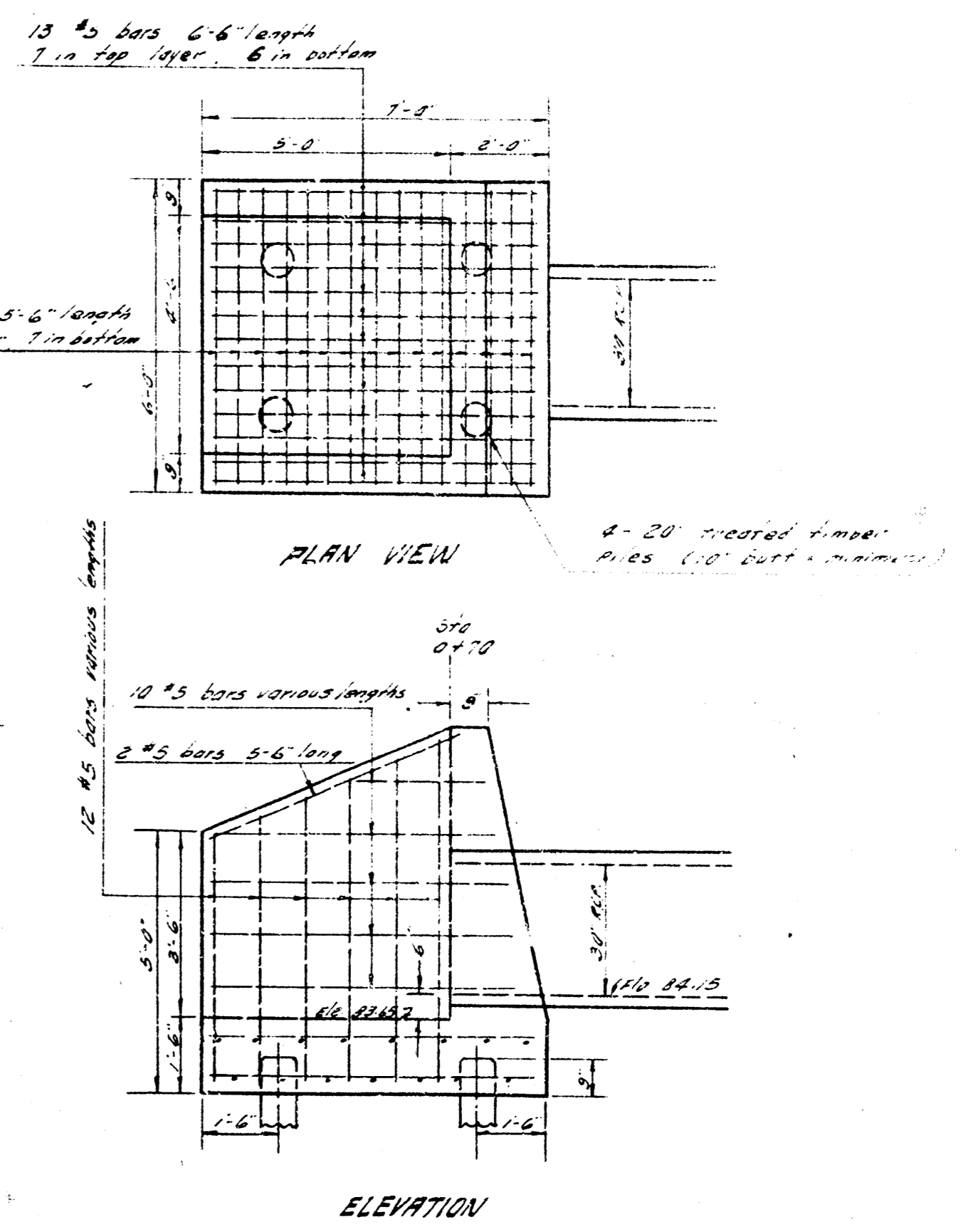
PLAN SCALE 1" = 40'  
PROFILE SCALE 1" = 40' HOR. 1" = 2' VERT.



NOTE:  
Bid price of sand fill is to include cost of flushing where sand fill is used. If excavated material is suitable for backfill, lowest part of flushing will be paid. Backfill may be included in bid price of pipe. Excess excavated dirt is to be used to fill old defects between Sta. 13+00 & 17+00.

NOTE:  
CONCRETE FOR THIS STRUCTURE SHALL CONTAIN NOT LESS THAN 1/8 BAGS PER CU YD. OF CONCRETE IN NO EVENT SHALL THE TOTAL WATER CONTENT EXCEED 8.25 GALS PER BAG OF CEMENT. THE MIXTURE OF FINE AND COARSE AGGREGATE SHALL BE SUCH AS WILL PRODUCE A MINIMUM DENSITY OF A MOST WORKABLE MIXTURE.

BILL OF MATERIALS  
4.83 Cu Yd. Concrete  
380 lbs. Steel  
Inst. Fall Arrows, Model 20C,  
20" Spigot back perforated  
flap gate original.



REINF. CONC. OUTFALL STRUCTURE @ STA. 0+77

Scale: 3/8" = 1'-0"

NOTE: INSTALLATION OF FLAP GATE TO BE INCLUDED IN BID PRICE OF OUTFALL STRUCTURE.

