

DRAINAGE SYSTEM IMPROVEMENTS

TO SERVE

CENTRAL RIVERSIDE PARK

THE CITY OF WICHITA,

SEDGWICK COUNTY, KANSAS

MICHAEL E. LINDEBAK, P.E.-CITY ENGINEER

PHASE II

INDEX CODE - 133108

CITY OF WICHITA PROJECT NO. 468 - 82369

MARCH, 1994

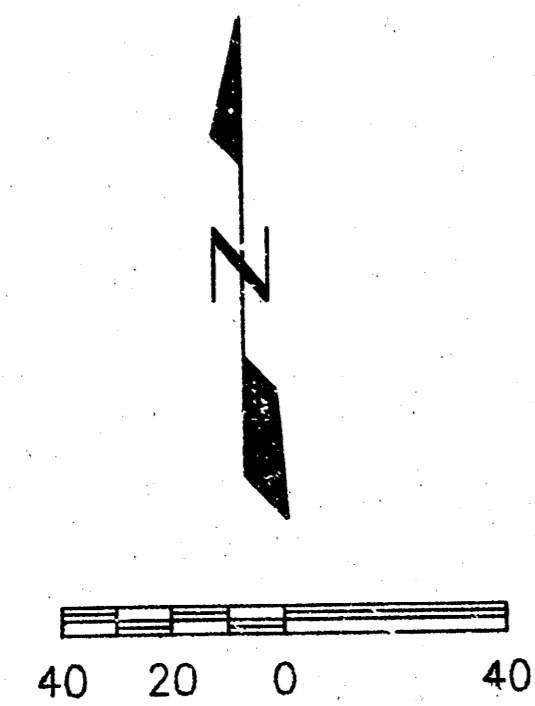
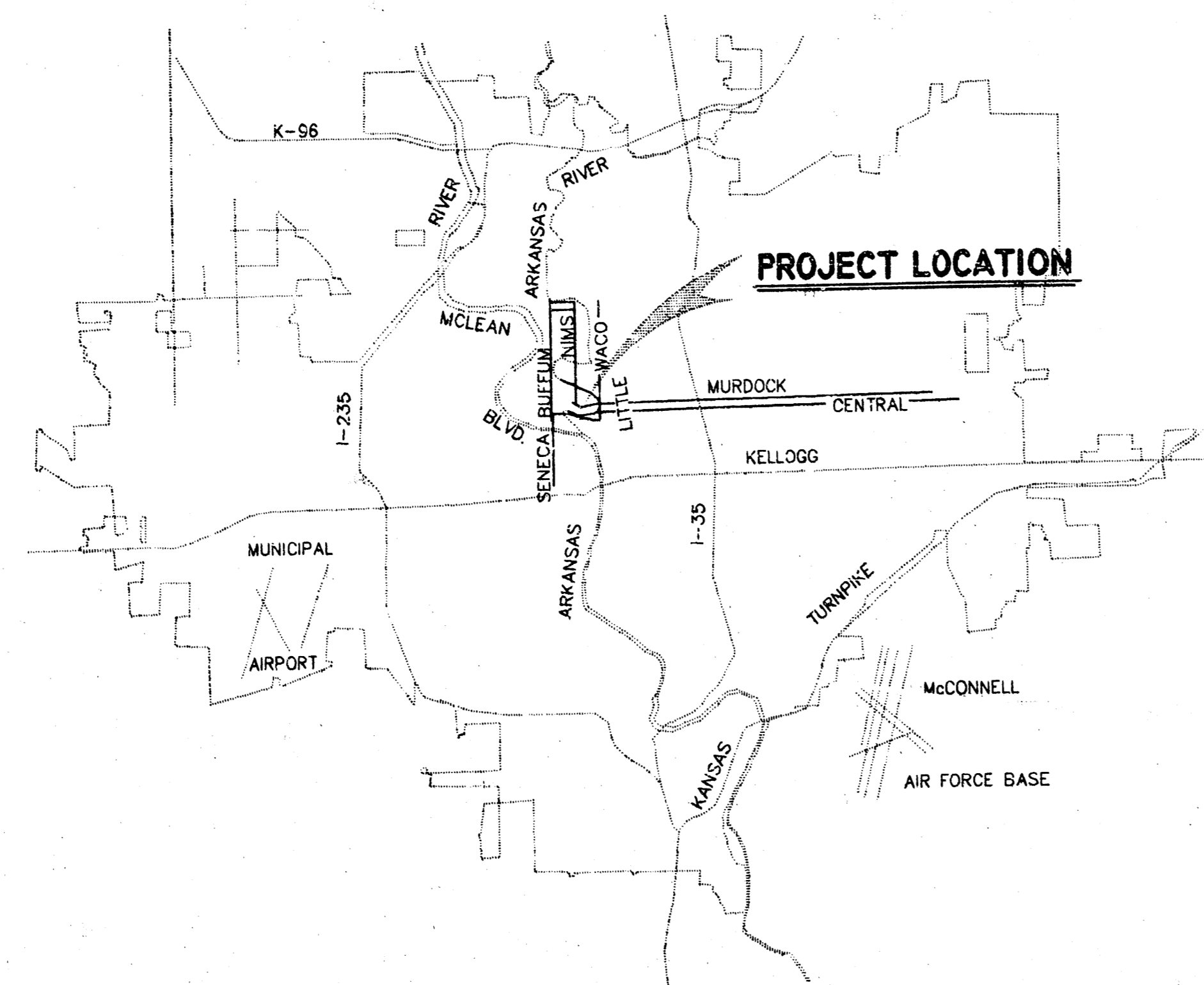
PLANS PREPARED BY

CASTLE & ASSOCIATES

WICHITA, KANSAS

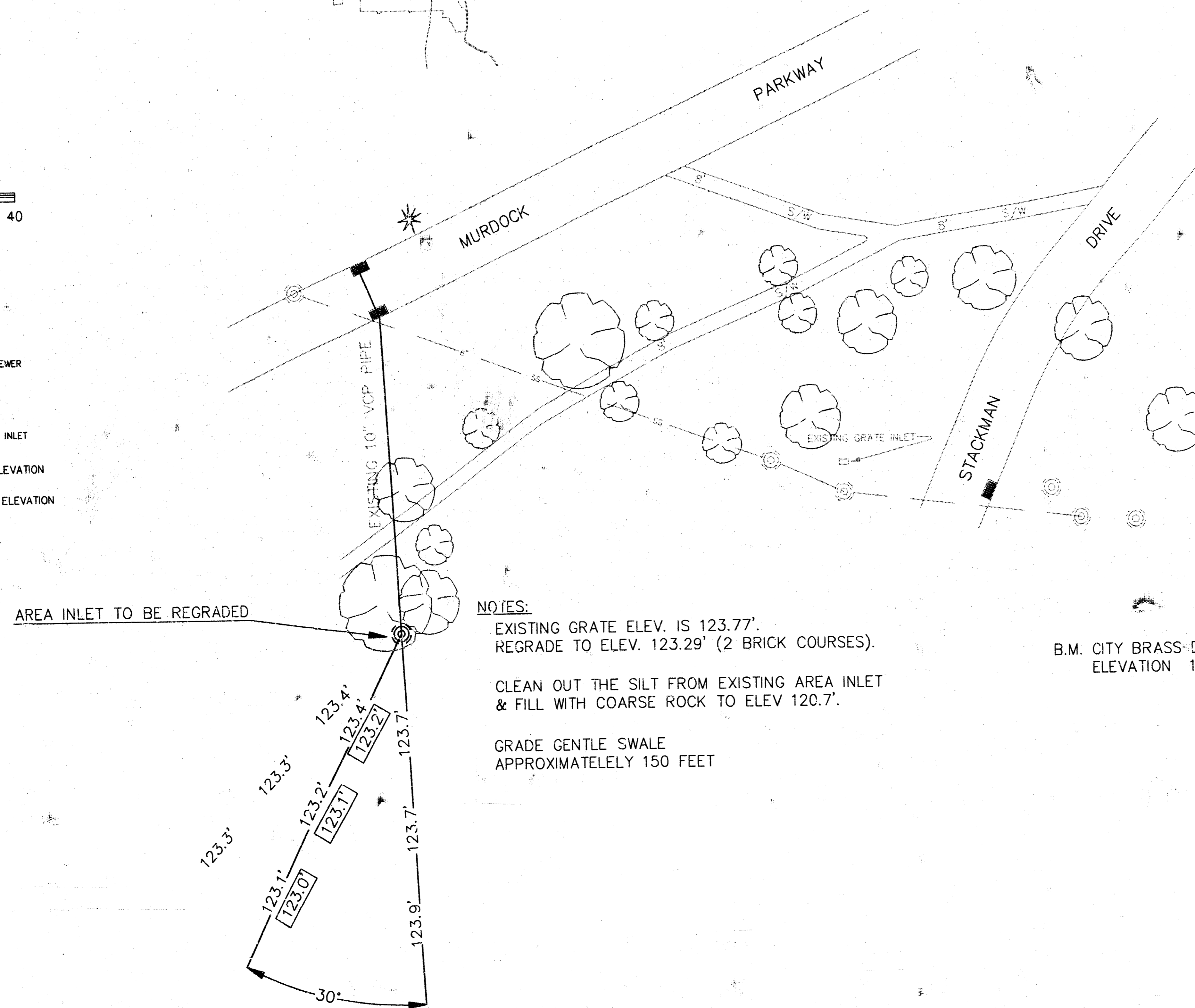
NOTES:

1. CLEAN EXISTING 10" VCP
2. MAINTAIN INTEGRITY OF PIPE
3. FLOW THE EXISTING VCP WHILE PUMPING FROM AREA INLET TO BE REGRADED



SYMBOL LEGEND

- TREE
- EVERGREEN
- MANHOLE
- SANITARY SEWER
- AREA INLET
- EXISTING CURB INLET
- 123.1' EXISTING ELEVATION
- 123.0' PROPOSED ELEVATION



- NOTES:**
- EXISTING GRATE ELEV. IS 123.77'
 - REGRADE TO ELEV. 123.29' (2 BRICK COURSES).
 - CLEAN OUT THE SILT FROM EXISTING AREA INLET & FILL WITH COARSE ROCK TO ELEV 120.7'.
 - GRADE GENTLE SWALE APPROXIMATELY 150 FEET

B.M. CITY BRASS DISK ON THE NORTHWEST SIDEWALK OF MURDOCK BRIDGE.
ELEVATION 130.62

Robert J. Castle
3/21/94

CITY OF WICHITA DRAINAGE IMPROVEMENTS	
CENTRAL RIVERSIDE PARK INLET MODIFICATION	
CASTLE & ASSOCIATES ENGINEERS WICHITA, KANSAS	DWG FILE NO 9324H - D - 70,013 SHEET NO 1
DATE MARCH 1994	DR CH APP REV.

AutoCAD Drawing File Name 9324E-1.DWG
 Archive Computer Disk # ACAD-DWG19
 Plot Scale 1=300