

W.L. Sta. 0+00.00
 B.L. Sta. 6+70.29 27.00 LT
 *1-6"x6" Tapping Sleeve
 *1-6" Valve
 *1-6" Valve Box
 Valve Box Elev.=Exist.
 *To be Installed by COW
 *To be Paid by Contractor

Plug 4" Valve #12992

Remove and Replace 151.46 LF of 6" WL

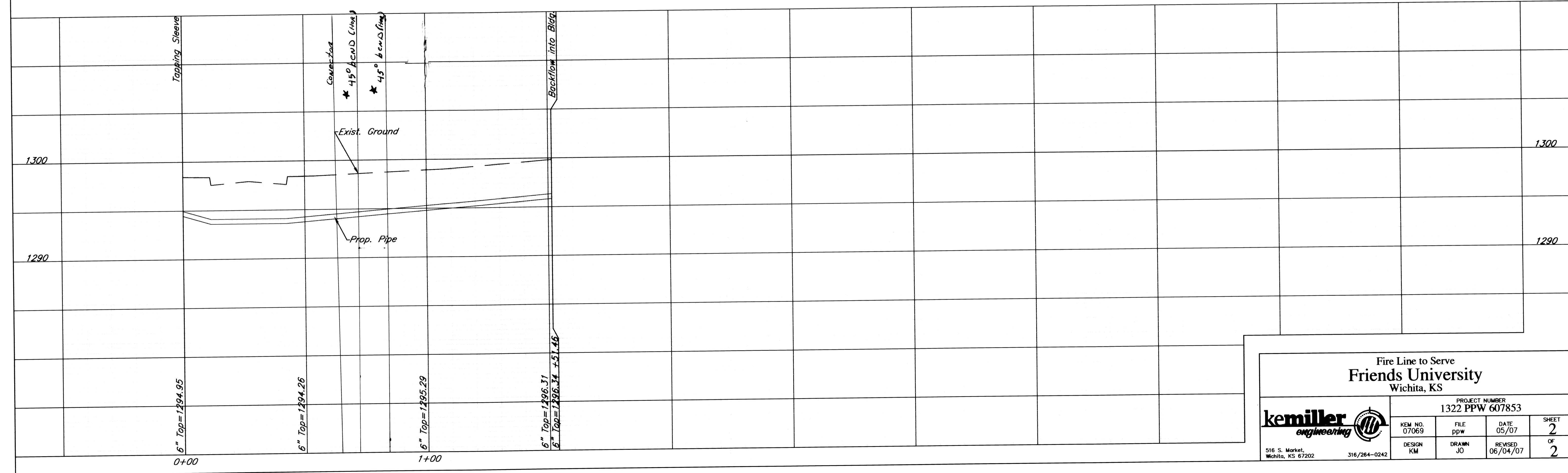
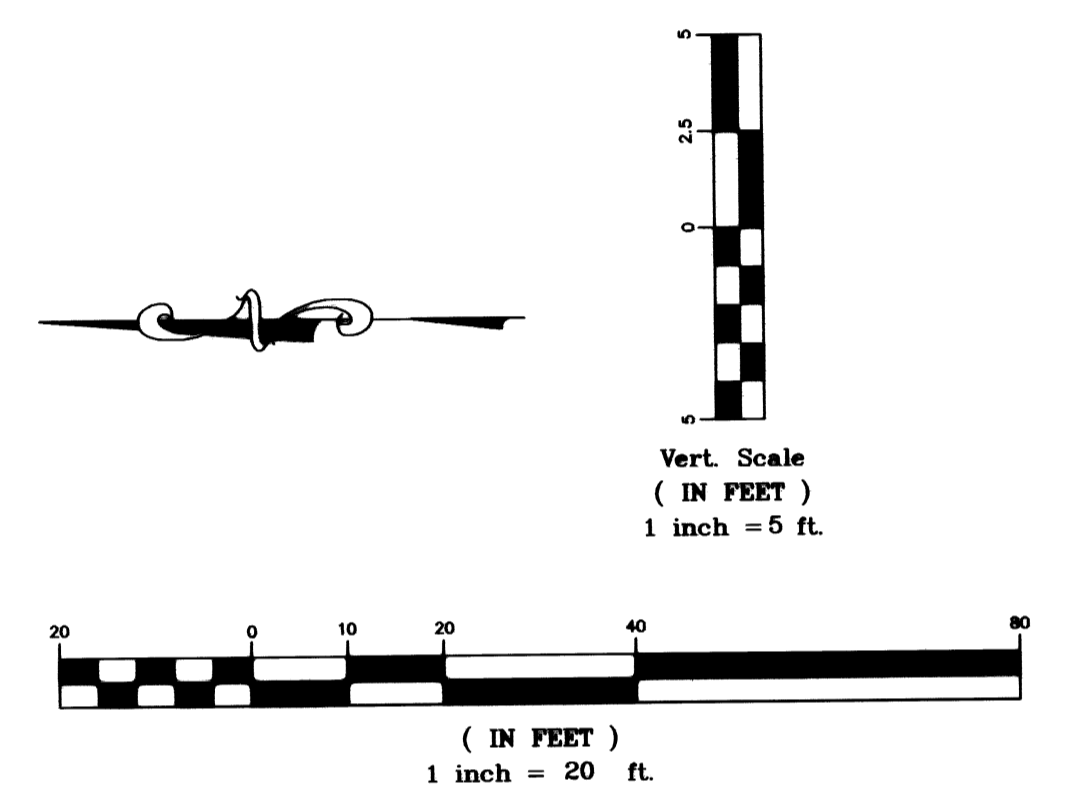
W.L. Sta. 1+51.46
 B.L. Sta. 6+70.29 124.46 RT
 Backflow into Bldg.

* 2-Horizontal 45° Bends
 A ROUND TREE

Baseline
 10+00 starting at the intersection of University and St. Clair.

Benchmark
 Benchmark 1: "□" on top of curb at the radius return of the north curb hammerhead. Elev.=1299.20

Benchmark 2: Thimble in South right-of-way at Centerline of St. Clair. Elev.=1297.39



Fire Line to Serve
Friends University
 Wichita, KS

kemiller engineering		PROJECT NUMBER 1322 PPW 607853				
		KEM NO. 07069	FILE ppw	DATE 05/07	SHEET 2	
516 S. Market, Wichita, KS 67202		316/284-0242	DESIGN KM	DRAWN JO	REVISED 06/04/07	OF 2