

# PRIVATE STORM WATER SEWER IMPROVEMENTS

to serve

## HICKORY CREEK ADDITION

Scale: 1" = 20' Horizontal  
 1" = 5' Vertical  
 • = Iron

### CITY OF WICHITA, KANSAS

As Built Plans

James L. Armor, P.E. City Engineer  
 Project Number  
 1774 PPS (607861)

Contractor: Wichita Excavating  
 Inspector: Lyle Powers, Baughman Co.  
 pdf by: KEK, 10/5/07

#### Sheet Index

Title/Plan/Profile Sheet	1
Copy of Plat	2
Inlet Details	Avail. on Request
BMP Erosion Details	Avail. on Request

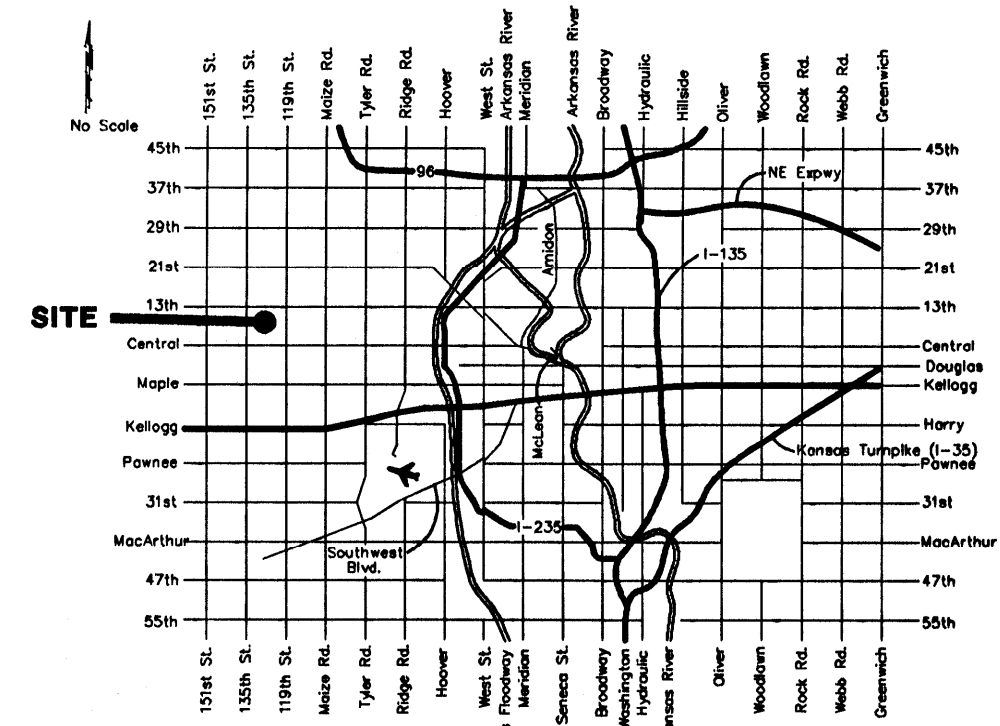
#### Benchmark

"□" Cut in Top of Curb at the north end of the median island at the intersection of Harvest Lane & Alderny

Elevation = 158.90

#### General Notes

- Contractor will be required to provide notice to utility companies a minimum of forty-eight (48) hours prior to any excavation, as follows:  
 Kansas One-Call 687-2470  
 The Contractor must notify the following in case of an emergency:  
 Cox Communications 262-4270  
 Kansas Gas Service 1-888-482-4950  
 Westar Energy 383-8650  
 Aquila Energy 1-800-303-0357  
 SBC 268-2245  
 City of Wichita Water Dept. 268-4563  
 City of Wichita Sewer Maint. 268-4024  
 City of Wichita Storm Sewer Maint. 268-4090  
 City of Wichita Traffic Maint. 268-4034
- No utilities have been located. Utilities are shown as a representation only. It shall be the contractor's responsibility to work around existing utilities. Field adjustment of location, line, and grade of proposed construction may be necessary to avoid existing utilities.
- Contractor shall be required to coordinate access to adjacent properties. Contractor shall remove and replace existing sod, sprinklers, trees, swing set, play set, & landscaping encountered as necessary.
- Rubble from the removal of miscellaneous structures and excess excavation which is to be wasted shall be disposed of on sites to be provided by the Contractor. These sites shall be approved by the Engineer as to suitability, appearance and site location. Locations, in the opinion of the Engineer, that will leave an unsightly appearance will not be approved. All disposal sites must be approved by the Kansas Department of Health and Environment. Material either stockpiled or disposed of in a flood plain would require a Kansas State Board of Agriculture permit. Any material dumped in waters of the United States or wetlands is subject to U.S. Corps. of Engineers permitting regulations. Any material buried or stockpiled beyond approved construction limits would require additional archaeological investigations unless buried in a previously approved borrow location.
- Contractor shall not start work on the project until the project inspector is assigned to the project and is present on the site. Contractor shall not start on the project until all necessary bonds and permits have been obtained. Bonds may include but are not limited to Statutory, Performance & Maintenance for areas in public right-of-way and easement. For projects within the City of Wichita contact Tom Mason (268-4574). Any work done without inspection will be required to be uncovered for inspection.
- All storm sewers and appurtenances shall be installed in accordance with the most recent edition of City of Wichita, Kansas Standard Specifications for the Construction of City Projects.



Vicinity Map

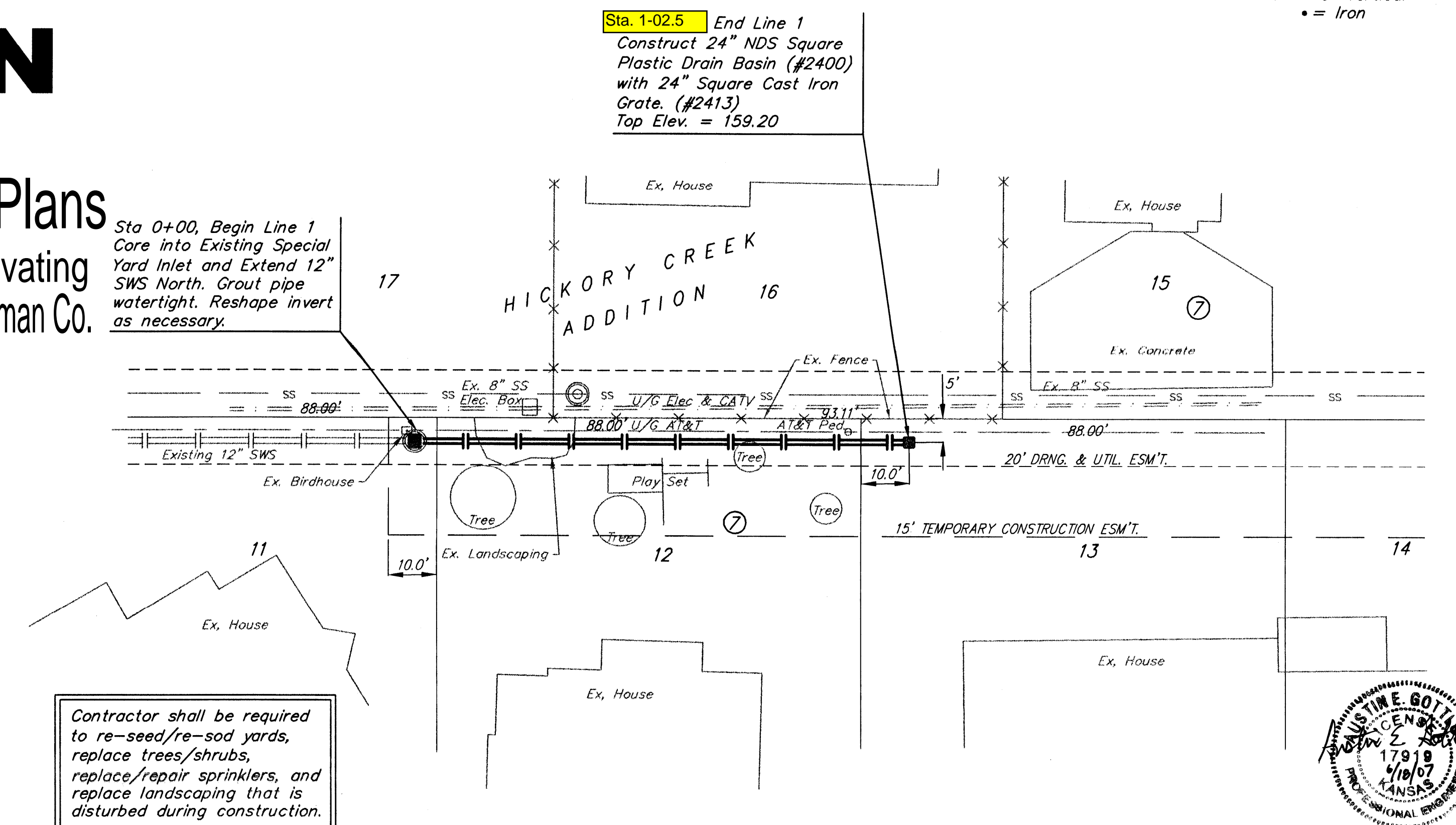
APPROVED AS NOTED  
 BY CITY ENGINEER OF WICHITA

*[Signature]* 6-19-07

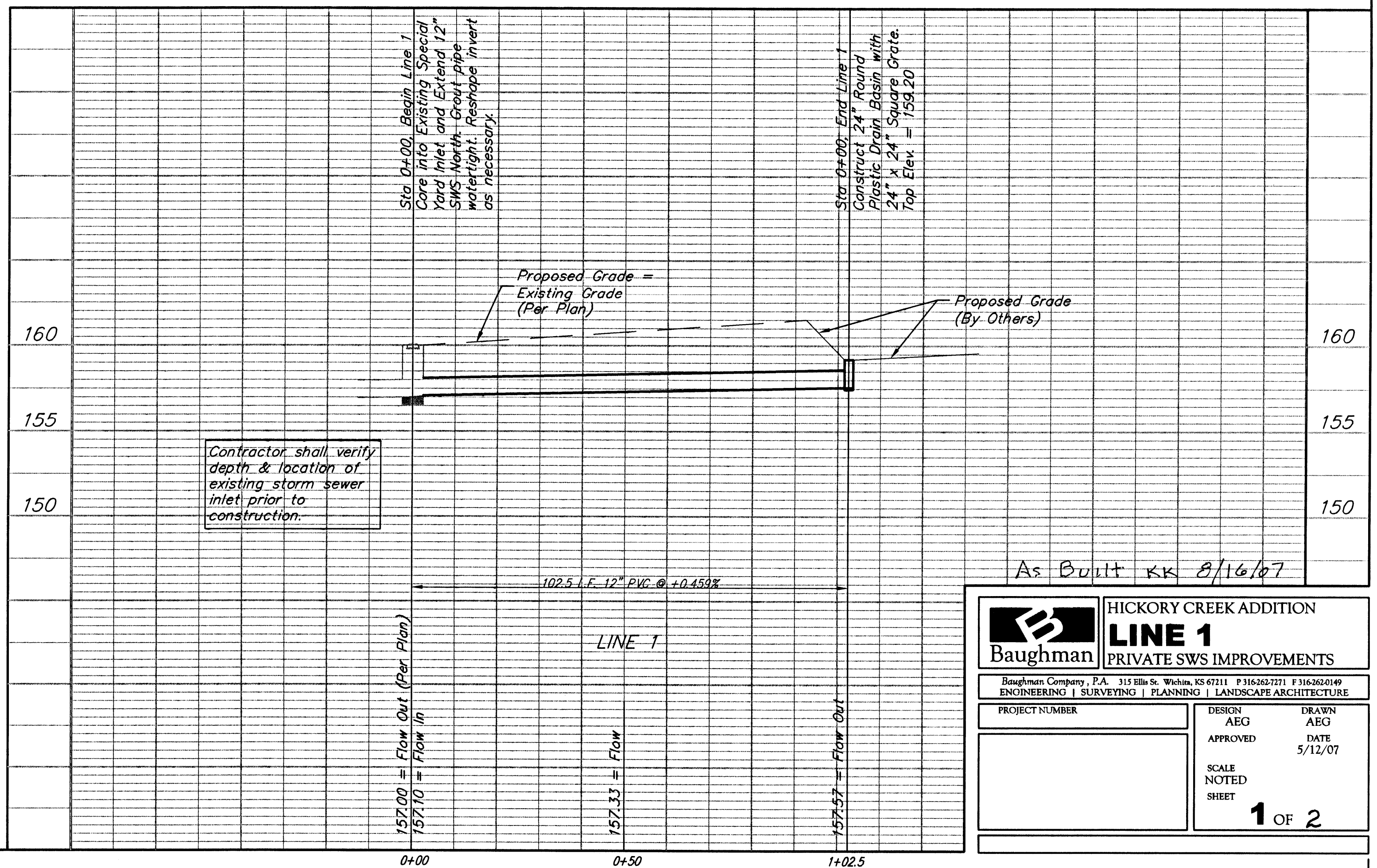
Storm Sewers

NOTE TO CONTRACTORS

Installation, inspection and testing for this project is to be provided by a Licensed Consulting Engineering Firm under contract with the Owner/Developer. Said inspection to be in accordance with the City of Wichita standard construction engineering practices and certified by a Licensed Professional Engineer. No work shall be performed in dedicated easements or public right-of-way by the Contractor without such inspection nor shall any work be commenced without written authorization by the City Engineer. All Construction and Materials shall comply with the City of Wichita Specifications and Standards (on file and available in the City Engineer's Office).



Contractor shall be required to re-seed/re-sod yards, replace trees/shrubs, replace/repair sprinklers, and replace landscaping that is disturbed during construction.



Contractor shall verify depth & location of existing storm sewer inlet prior to construction.

As Built KK 8/16/07

**Baughman** HICKORY CREEK ADDITION  
**LINE 1**  
 PRIVATE SWS IMPROVEMENTS

Baughman Company, P.A. 315 Ellis St., Wichita, KS 67211 P 316-263-7211 F 316-263-0249  
 ENGINEERING | SURVEYING | PLANNING | LANDSCAPE ARCHITECTURE

PROJECT NUMBER	DESIGN AEG	DRAWN AEG
	APPROVED	DATE 5/12/07
	SCALE NOTED	
	SHEET	1 OF 2