

STORM WATER SEWER IMPROVEMENTS

to serve

RIDGE PORT COMMERCIAL PARK ADDITION, LOT 10, BLOCK A CITY OF WICHITA, KANSAS

James L. Armour, P.E. City Engineer

Project Number

1807 PPS

O.C.A. Number

607861

As Built Plans

Contractor: Mies Const. Co.

Inspector: Lyle Powers, Baughman Co.

pdf by: KEK, 10/5/07

GENERAL NOTES:

1. Contractor will be required to provide notice to utility companies a minimum of forty-eight (48) hours prior to any excavation, as follows:

Kansas One-Call 687-2470

Contractor must notify the following in case of an emergency:

- Cox Communications 262-4270
- Kansas Gas Service 1-888-482-4950
- Westar Energy 383-8650
- Aquila Energy 1-800-303-0357
- AT&T 1-800-431-1411
- City of Wichita Water Dept. 268-4563
- City of Wichita Sewer Maint. 268-4024
- City of Wichita Storm Sewer Maint. 268-4090
- City of Wichita Traffic Maint. 268-4034
- Conoco Phillips Pipeline 1-877-267-2290
- Southern Star Pipeline 529-6600
- Kinder Morgan Pipeline 1-888-844-5658

2. Underground utility service lines and overhead utility pole lines are to be adjusted as necessary by others prior to construction unless the plans specifically call for their adjustment by the Contractor or unless the plans specifically identify a utility to be adjusted by its owner during construction. Existing utilities and their location, as shown on the plans, represent the best information obtainable for design. The Contractor will be required to work around existing utilities within the right-of-way which do not conflict with proposed construction.

3. Trees and shrubs in public right-of-way which are in direct conflict with proposed new construction shall be removed by the Contractor with the Engineer's approval. Trees and shrubs which are not in direct conflict with proposed new construction shall be saved and protected from damage.

4. The Contractor shall be responsible for preserving property irons. The Contractor will be required to re-establish any property irons which are damaged or destroyed by his construction operations. Such irons shall be re-established by a licensed land surveyor in accordance with state laws.

5. The Contractor shall not start work on the project until the Project Inspector is assigned to the project and is present on the sight. Any work done without inspection will be required to be uncovered for inspection.

6. All areas disturbed during construction shall be seeded at 300 lbs./acre with Rye Grass immediately following construction in that area. Contractor shall prepare ground per City Specifications.

APPROVED AS NOTED
 BY CITY ENGINEER OF WICHITA

Storm Water Sewer VRH 8/31/07

NOTE TO CONTRACTORS

Installation, inspection, and testing for this project is to be provided by a Licensed Consulting Engineering Firm under contract with the Owner/Developer. Said inspection to be in accordance with the City of Wichita standard construction engineering practices and certified by a Licensed Professional Engineer. No work shall be performed in dedicated easements or public right-of-way by the Contractor without such inspection nor shall any work be commenced without written authorization by the City Engineer. All Construction and Materials shall comply with the City of Wichita Specifications and Standards (on file and available in the City Engineer's Office).

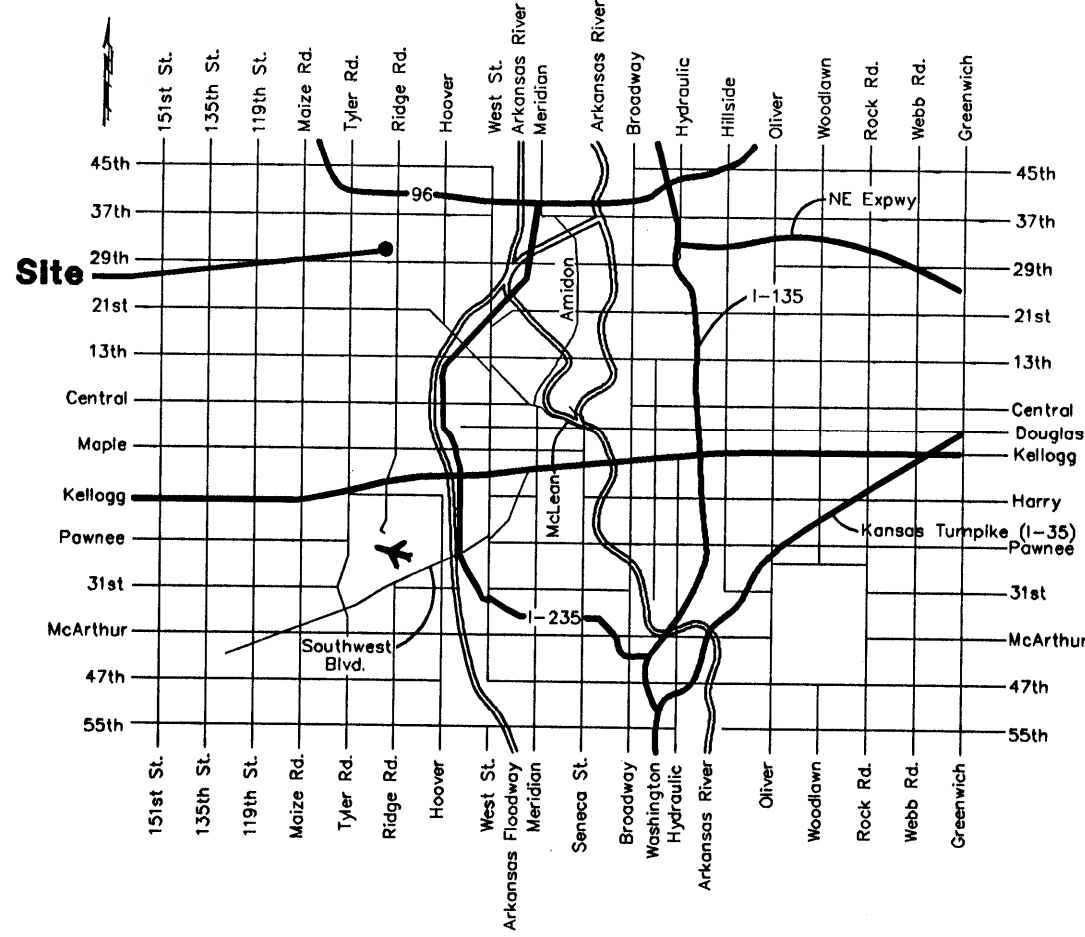
Sheet Index

Title Sheet / Line 1	1
Drop Inlet Details	2

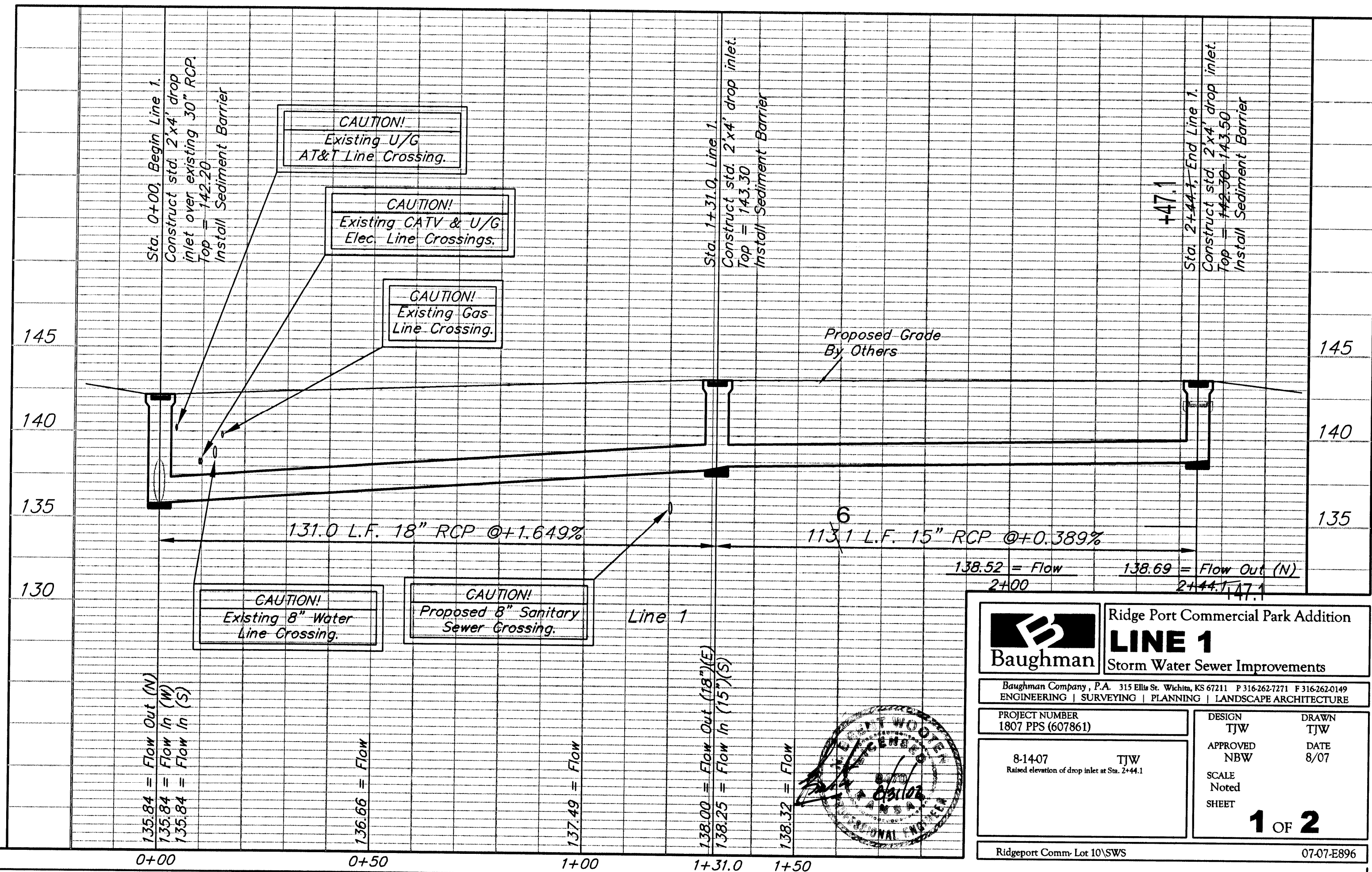
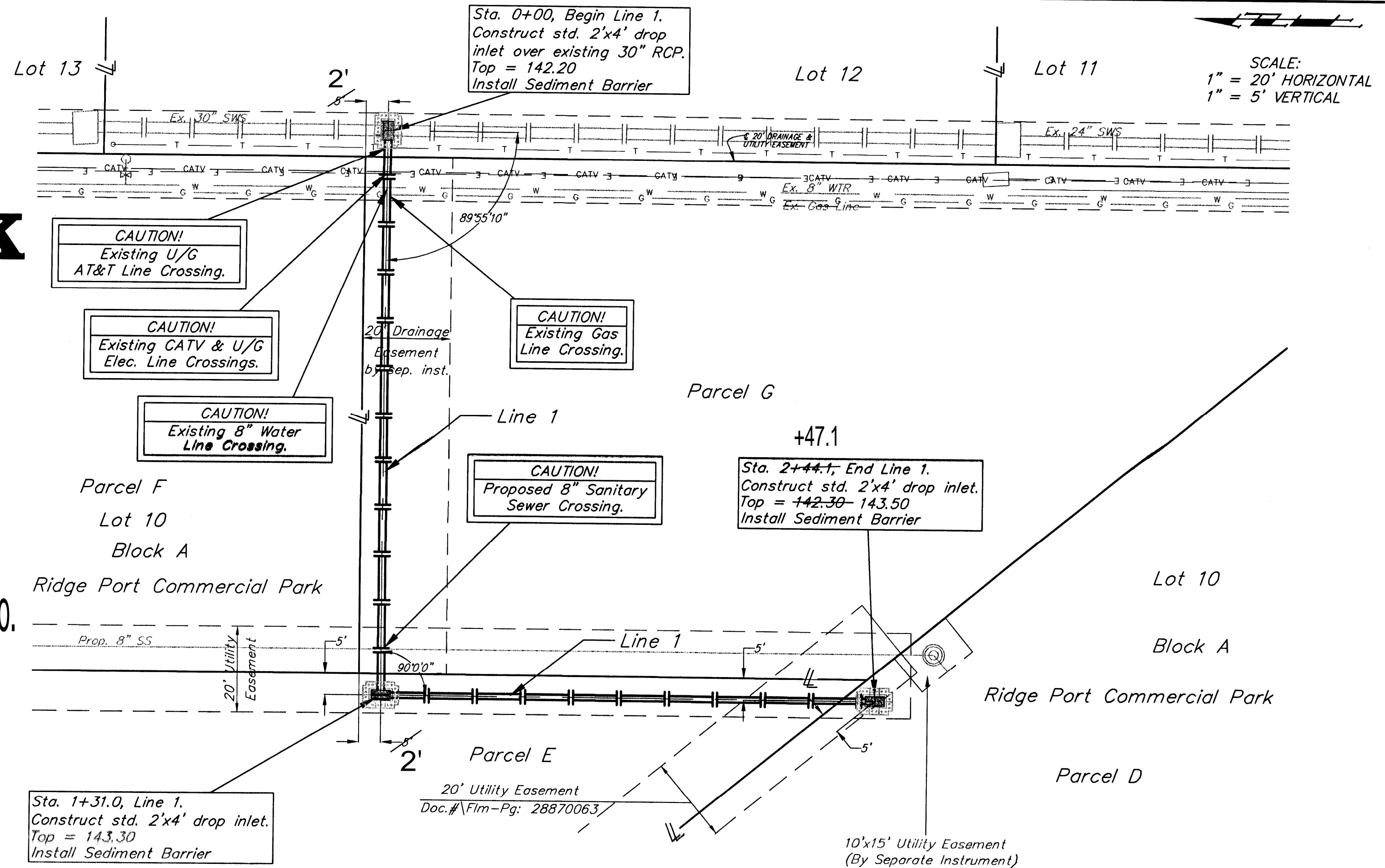
Benchmarks:

City Disc - SW Corner of Ridge Road & 29th Street North. 80.8' S. & 63.7' W. of C both. Elev. = 139.15 City Datum

"□" cut on SE Corner of Bridge, 1/2 Mile N. of 29th Street North & Ridge Road. Elev. = 143.85 City Datum



VICINITY MAP



Baughman Ridge Port Commercial Park Addition
LINE 1
 Storm Water Sewer Improvements

PROJECT NUMBER: 1807 PPS (607861) DESIGN: TJW
 DRAWN: TJW
 APPROVED: NBW DATE: 8/07
 SCALE: Noted
 SHEET: 1 OF 2

8-1407 TJW
 Raised elevation of drop inlet at Sta. 2+44.1

Ridgeport Comm. Lot 10/SWS 07:07:E896