

PLAN
 CHECKED
 CHECKED
 BY
 DATE

PROFILE
 CHECKED
 CHECKED
 BY
 DATE

Saved 02-06-2006 10:22:10 AM by TDS
 01/20/06 02:11:00 (01) 001 Water (CV506) WEP01

N-4,113.7619, E-10,976.6402
 @ Morris Street, Sta. 9+53.26, 42.49' Lt.=
 FS 1, Sta. 0+00.00
 Existing 8" Private Fire Service *
 1- 8" x 8" Tapping Sleeve
 1- 8" Tapping Valve
 1- 6" Valve Box
 Top Valve Box El.= 105.0

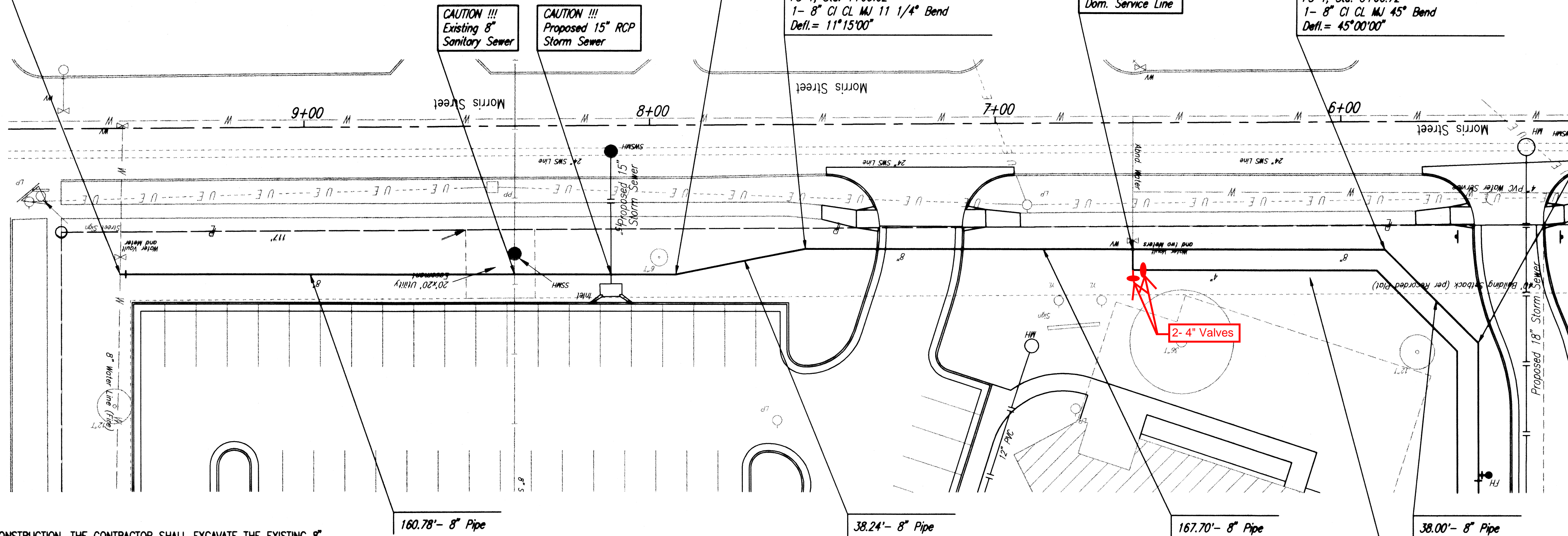
N-4,113.7619, E-10,815.8574
 @ Morris Street, Sta. 7+92.48, 43.50' Lt.=
 FS 1, Sta. 1+60.78
 1- 8" CI CL MJ 11 1/4" Bend
 Defl.= 11°15'00"

N-4,106.3020, E-10,778.3539
 @ Morris Street, Sta. 7+54.93, 36.28' Lt.=
 FS 1, Sta. 1+99.02
 1- 8" CI CL MJ 11 1/4" Bend
 Defl.= 11°15'00"

N-4,106.3020, E-10,610.6581
 @ Morris Street, Sta. 5+87.24, 37.34' Lt.=
 FS 1, Sta. 3+66.72
 1- 8" CI CL MJ 45° Bend
 Defl.= 45°00'00"

N-4,133.1720, E-10,583.7881
 @ Morris Street, Sta. 5+60.54, 64.38' Lt.=
 FS 1, Sta. 4+04.72
 1- 8" CI CL MJ 45° Bend
 Defl.= 45°00'00"

SCALE:
 PLAN: LAT. & LONG. 0 20 40
 PROFILE: HORIZ. SAME AS ABOVE
 VERT. 0 5

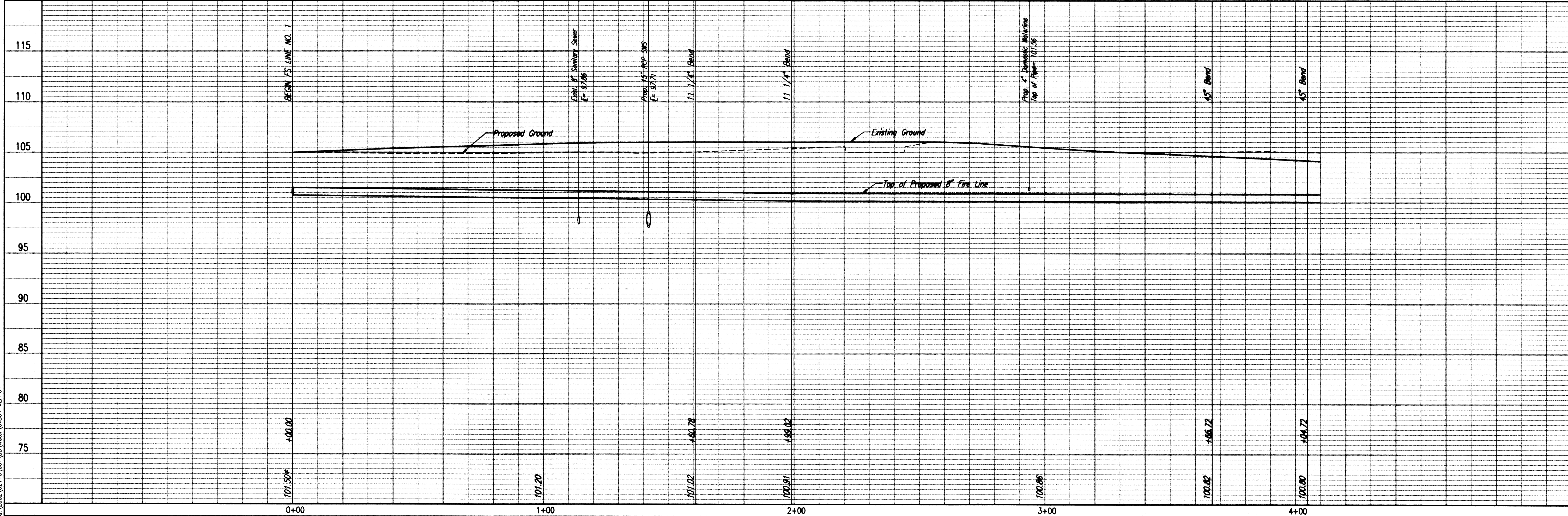


* PRIOR TO BEGINNING CONSTRUCTION, THE CONTRACTOR SHALL EXCAVATE THE EXISTING 8" FIRE LINE AT STATION 0+00.00 TO VERIFY PIPE SIZE, TYPE, FITTINGS, AND HORIZONTAL AND VERTICAL LOCATION. THE CONTRACTOR SHALL REPORT HIS FINDINGS TO THE ENGINEER SO THAT ANY NECESSARY PLAN MODIFICATIONS MAY BE MADE. ANY ADDITIONAL LABOR OR MATERIALS NECESSARY TO COMPLETE THE CONNECTION SHALL BE CONSIDERED SUBSIDIARY TO THE PROJECT.

Unless noted otherwise, elevations shown are top of pipe

FIRE SERVICE LINE NO. 1

DOMESTIC WATERLINE NO. 1
 See sheet no. 6 (CV506).



CITY OF WICHITA, KANSAS
 JAMES L. RABOUR, P.E., CITY ENGINEER
 SEDGWICK COUNTY JUVENILE COURT COMPLEX
FIRE SERVICE LINE NO. 1
 CITY OF WICHITA PRIVATE PROJECT NO. 1201 PPM (607953)

Professional Engineering Consultants, P.A.
 303 S. TOPKA • WICHITA, KANSAS 67202
 316-262-2691 • FAX 316-262-3003

Designed By: DMH
 Drawn By: DCM
 Job No.: 35-02116-001-259
 Date: August 2003

Sheet 4 of 10

