

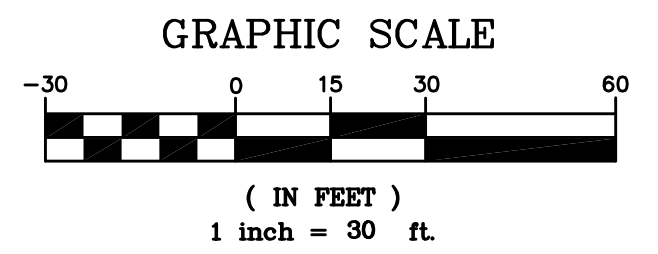
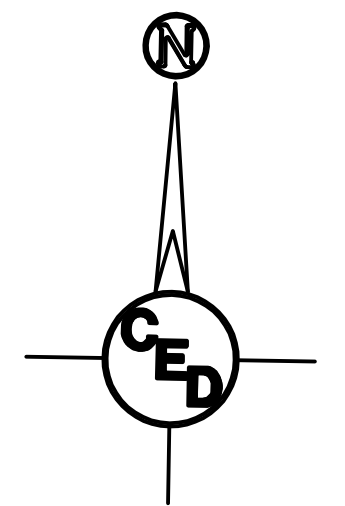
# EROSION CONTROL PLAN

## 43RD STREET SOUTH PAVING IMPROVEMENTS

### WICHITA, SEDGWICK COUNTY, KANSAS

Subject Area=0.55 Acres  
 Disturbed Area=±0.55 Acres  
 Proposed Impervious Area=±0.36 Acres

Contractor shall install erosion control devices under Best Management Practices, BMP's, as shown but not limited to the call-outs on this plan. Contractor will be required to install additional BMP's as required when additional areas begin to erode that are not already mentioned on this plan. (See Erosion Control Sheets 9-13 for more information.)

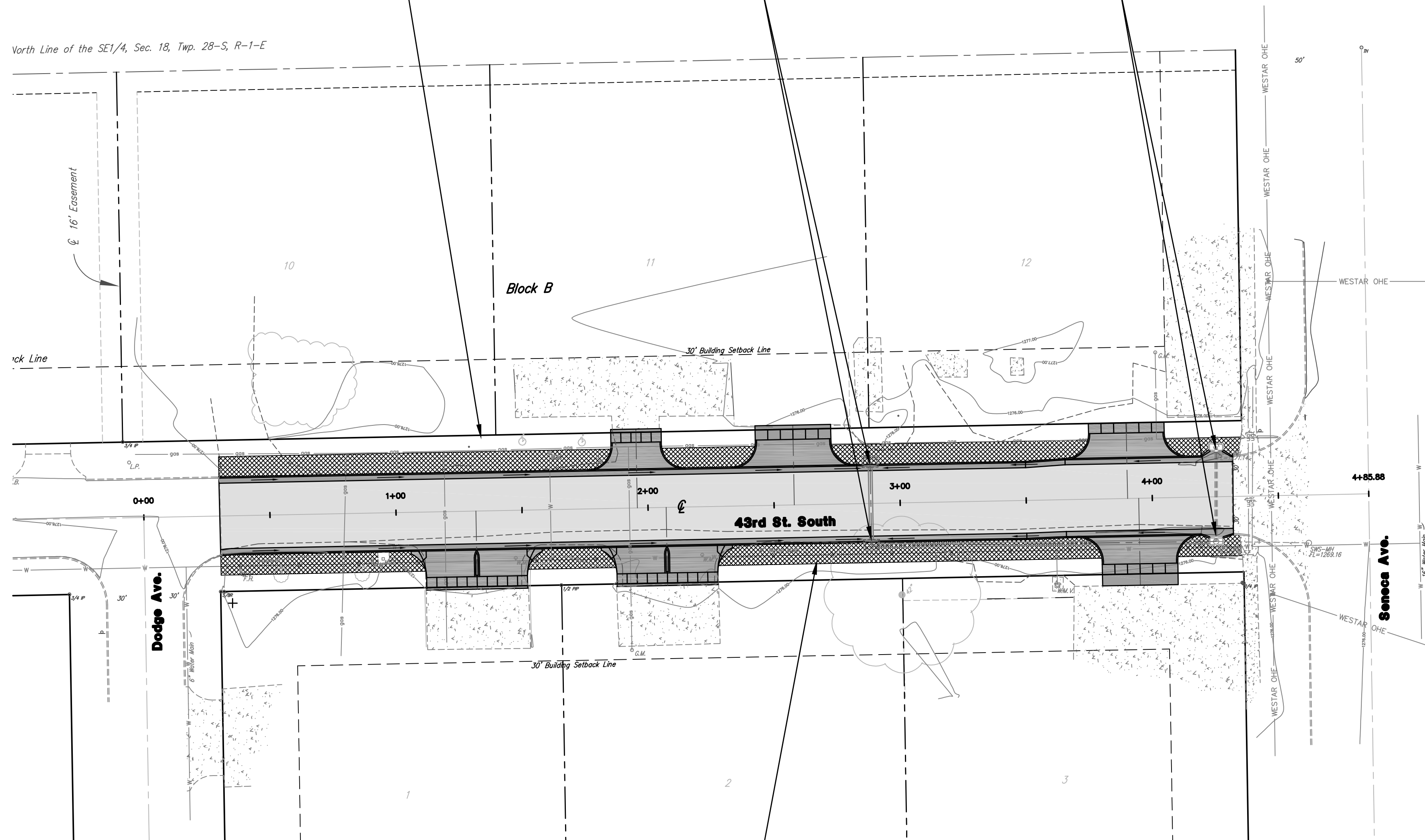


Contractor Shall Seed In Kind Disturbed Areas Within 43rd Street ROW Along Length of Project. Contractor Shall Refer To General Note No. 22 on Title Sheet For Restoration of Disturbed Grass Areas.

Contractor Shall Install "Inlet Protection" At Both New Curb Inlet Locations In Accordance With The Details And Notes On Sheets 9.-13.

Contractor Shall Install "Inlet Protection" At Both Existing Curb Inlet Locations In Accordance With The Details And Notes On Sheets 9.-13.

Varth Line of the SE1/4, Sec. 18, Twp. 28-S, R-1-E



**UTILITY LEGEND**

= Fire Hydrant	= Flag Pole
= Water Meter	= SS Manhole
= Water Valve	= SWS Manhole
= Gas Meter	= Sign
= Gas Valve	= Misc. Post
= Telephone Riser	= Guy Anchor
= Mailbox	= Power Pole
= Deciduous Tree or Shrub	= Light Pole
= Existing Fence	
= Right of Way Line	
= Underground Telephone	
= Underground Electric	
= Overhead Electric	
= Water Line	
= Sanitary Sewer	
= Gas Line	
= Cable TV or Fiber Optic	

- = Proposed 5" A.C. Pavement on 5" Crushed Rock Base
- = Proposed Concrete Drives, Curb & Gutter, etc.
- = Back of Curb Protection

Benchmark: Square Cut on Sidewalk at N.E. Corner of Lot 3, Block D, Vilm Gardens Second Addition.  
 Elevation = 1276.05 NAVD88

Contractor Shall Install 488 S.Y. of 8' Wide "Back of Curb Protection" (Curlax I Excelsior Erosion Blanket) Behind Back of Curb Along the Length of Project. Contractor Shall Refer To General Note No. 22 on Title Sheet For Restoration of Disturbed Grass Areas. (See BMP Detail Sheet's 9-13 for Details.)

UTILITIES SHOWN REPRESENT THE BEST INFORMATION AVAILABLE FOR DESIGN. ADDITIONAL UTILITIES MAY BE PRESENT ON THIS PROJECT. THE CONTRACTOR SHALL BE RESPONSIBLE FOR DETERMINING THE EXACT LOCATION, DEPTH AND SIZE OF ALL UNDERGROUND UTILITIES PRIOR TO CONSTRUCTION. THE CONTRACTOR SHALL BE LIABLE FOR ANY DAMAGE CAUSED BY THE FAILURE TO DO SO.

**SURVEY DISCLAIMER:**  
 TOPOGRAPHIC SURVEY AND CONTOUR MAP USED IN PREPARING PLANS WAS PROVIDED BY SAVOY COMPANY, P.A., 535 S. EMPORIA, SUITE 104, WICHITA, KS. ENGINEER DOES NOT GUARANTEE SURVEY ELEVATIONS FOR ACCURACY. CONTRACTOR SHALL VERIFY ELEVATIONS AND NOTIFY ENGINEER OF ANY DISCREPANCIES.

**CURB & GUTTER STREET IMPROVEMENTS FOR**  
**EROSION CONTROL PLAN**  
 43RD STREET SOUTH, WICHITA, SEDGWICK COUNTY, KS  
 CED PROJ. NO.: 20071572

**CERTIFIED ENGINEERING DESIGN, P.A.**

810 WEST DOUGLAS, SUITE C  
 WICHITA, KANSAS 67203  
 PH.(316)262-8808 FAX.(316)262-1669

DESIGNED: HDF	SCALE: 1"=30'	SHEET
DRAWN: JDT	DATE: 09-07	3
CHECKED: HDF	CED FILE: 43rdStreetDesign	TOTAL 15