

Sta. 10+00.00  
 Begin 15" RCP SWS Pipe @ Exist.  
 Inlet. Contractor Shall Core West Inlet  
 Wall & Seal New 15" RCP to Inlet Wall  
 w/Quick-Set Hydraulic Cement. Fill All  
 Inlet Imperfections w/Said Cement.  
 Exist. Inlet FL Elev.=1270.57  
 PR 15" RCP FL Elev.=1270.57  
 N 1659743.32  
 E 1644469.20

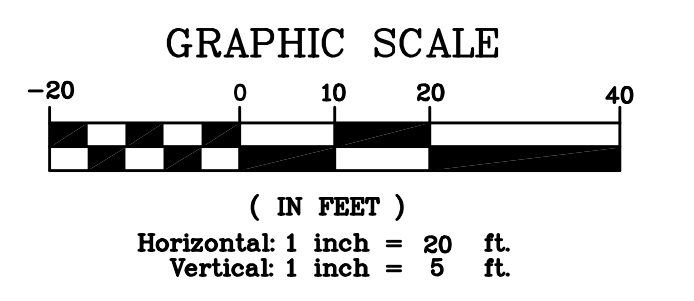
Install 136.63 L.F. of 15" RCP  
 SWS Pipe @ 0.38% Slope.

SWS Sta. 11+36.63  
 Install Standard Type 1 Curb Inlet  
 PR Inlet FL Elev.=1271.09  
 PR 15" RCP FL Elev. Out(E)=1271.09  
 PR 15" RCP FL Elev. In(N)=1271.29  
 N 1659733.35 (Inside Face on NE  
 Corner of Inlet)  
 E 1644730.21  
 N 1659733.26 (Inside Face on NW  
 Corner of Inlet)  
 E 1644725.21

Install 33.67 L.F. of 15" RCP  
 SWS Pipe @ 0.38% Slope.

SWS Sta. 11+70.29  
 Install Standard Type 1 Curb Inlet  
 PR Inlet FL Elev.=1271.42  
 PR 15" RCP FL Elev. Out(S)=1271.42  
 N 1659763.25 (Inside Face on SW  
 Corner of Inlet)  
 E 1644724.64  
 N 1659763.35 (Inside Face on SE  
 Corner of Inlet)  
 E 1644729.63

All Backfill of Proposed Storm  
 Water Sewer Trench Shall Be  
 Compacted To 95% Standard  
 Proctor Density (ASTM D-698)



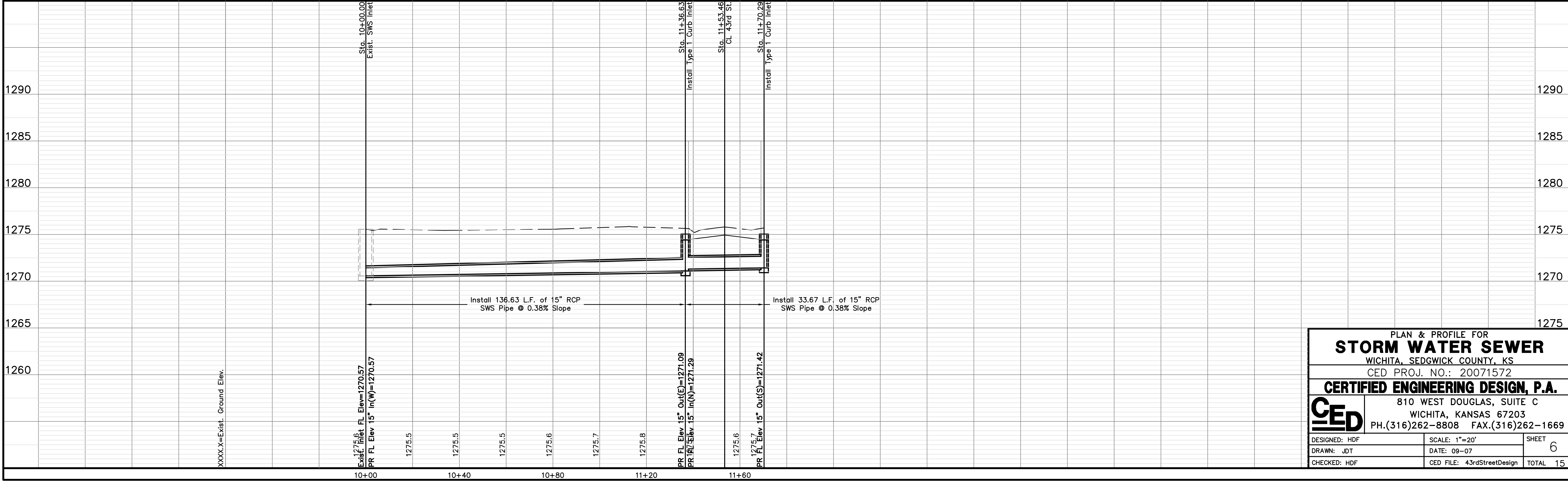
**UTILITY LEGEND**

= Fire Hydrant	= Flag Pole
= Water Meter	= SS Manhole
= Water Valve	= SWS Manhole
= Gas Meter	= Sign
= Gas Valve	= Misc. Post
= Telephone Riser	= Guy Anchor
= Mailbox	= Power Pole
= Deciduous Tree or Shrub	= Light Pole
= Existing Fence	
= Right of Way Line	
= Underground Telephone	
= Underground Electric	
= Overhead Electric	
= Water Line	
= Sanitary Sewer	
= Gas Line	
= Cable TV or Fiber Optic	

UTILITIES SHOWN REPRESENT THE BEST  
 INFORMATION AVAILABLE FOR DESIGN. ADDITIONAL  
 UTILITIES MAY BE PRESENT ON THIS PROJECT.  
 THE CONTRACTOR SHALL BE RESPONSIBLE FOR  
 DETERMINING THE EXACT LOCATION, DEPTH AND  
 SIZE OF ALL UNDERGROUND UTILITIES PRIOR TO  
 CONSTRUCTION. THE CONTRACTOR SHALL BE  
 LIABLE FOR ANY DAMAGE CAUSED BY THE  
 FAILURE TO DO SO.

Benchmark: Square Cut on Sidewalk at  
 N.E. Corner of Lot 3, Block D, Vilm Gardens  
 Second Addition.  
 Elevation = 1276.05 NAVD88

# STORM WATER SEWER



PLAN & PROFILE FOR  
**STORM WATER SEWER**  
 WICHITA, SEDGWICK COUNTY, KS  
 CED PROJ. NO.: 20071572  
**CERTIFIED ENGINEERING DESIGN, P.A.**  
 810 WEST DOUGLAS, SUITE C  
 WICHITA, KANSAS 67203  
 PH.(316)262-8808 FAX.(316)262-1669

DESIGNED: HDF	SCALE: 1"=20'	SHEET
DRAWN: JDT	DATE: 09-07	6
CHECKED: HDF	CED FILE: 43rdStreetDesign	TOTAL 15