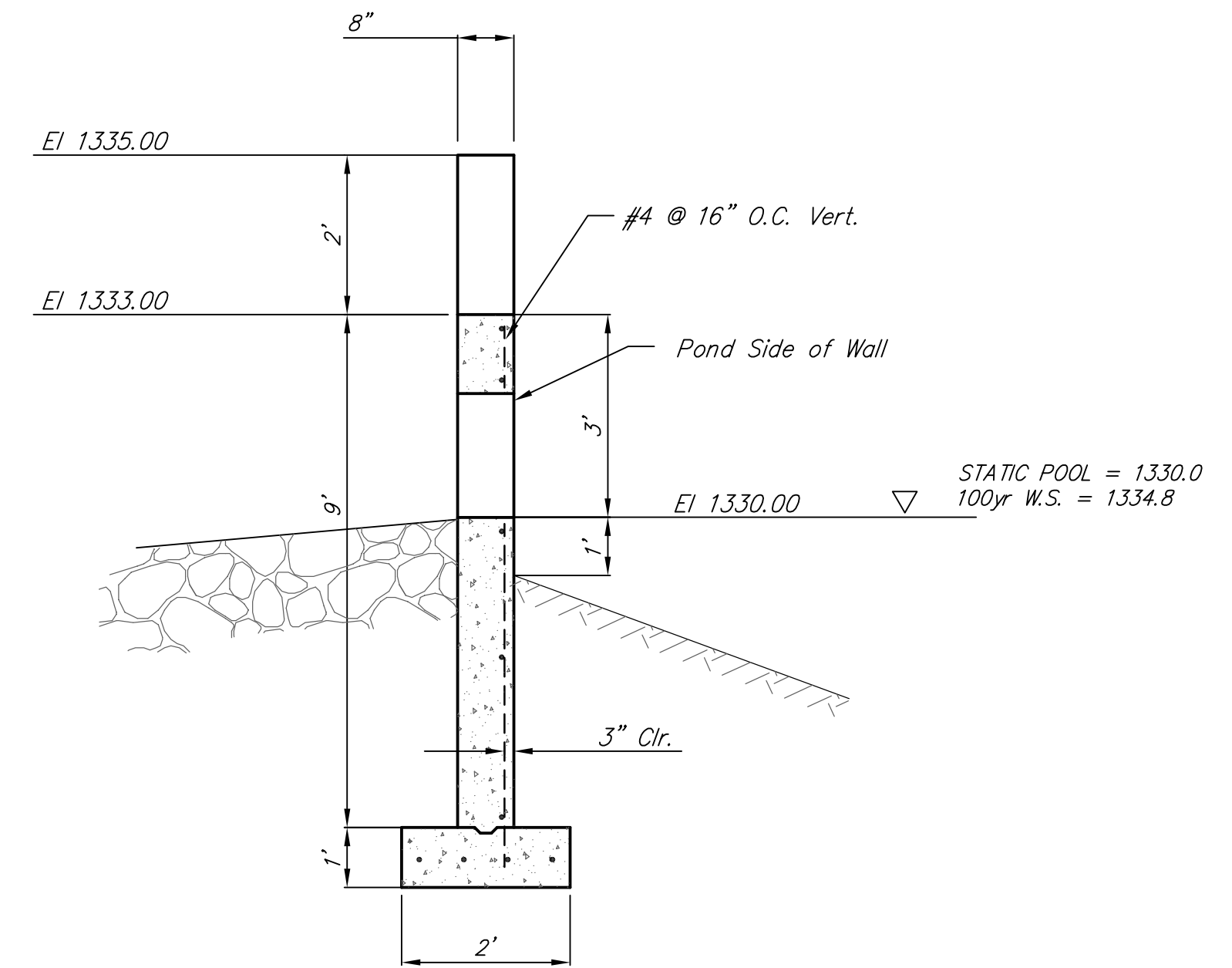
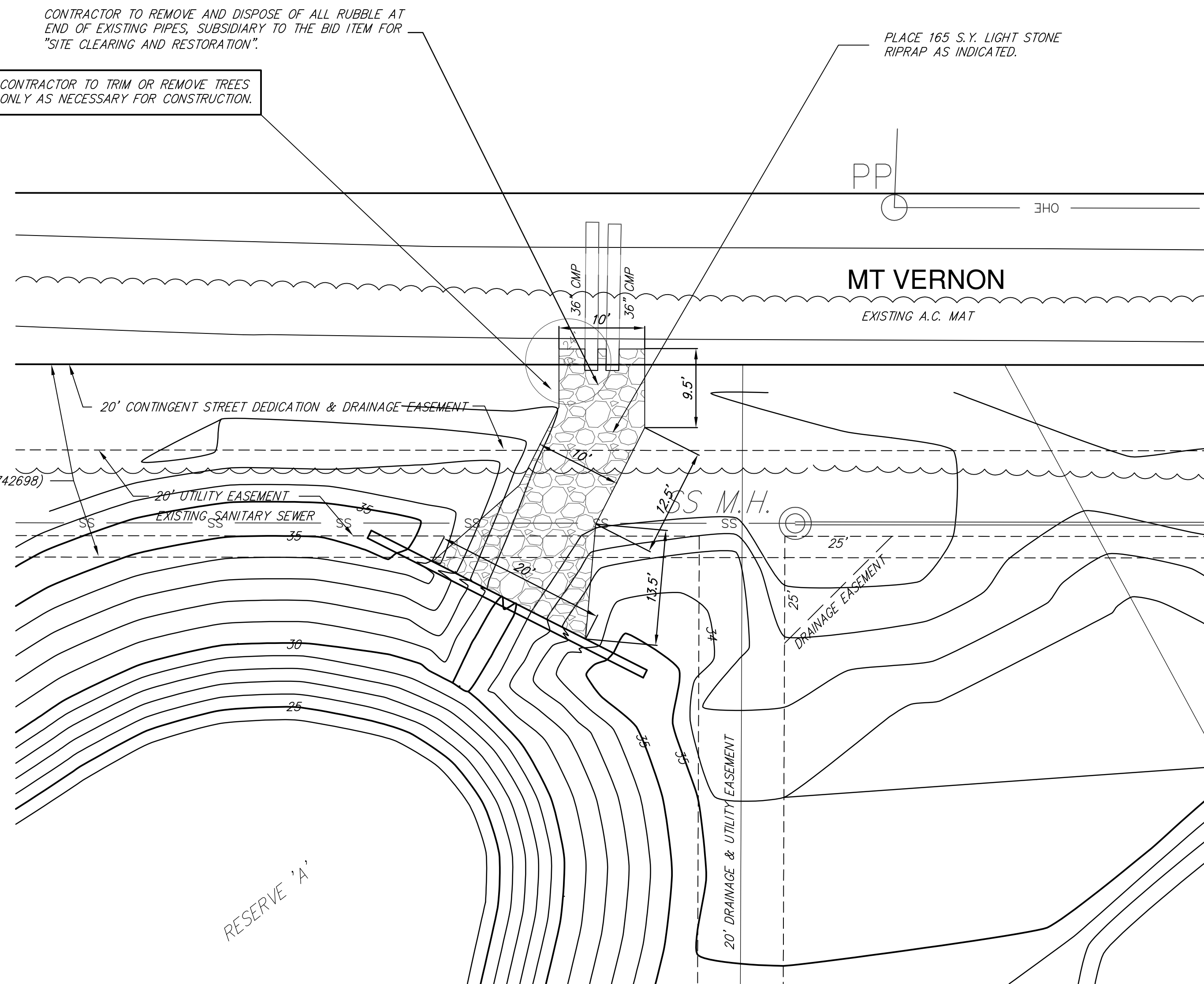


CONTRACTOR TO REMOVE AND DISPOSE OF ALL RUBBLE AT END OF EXISTING PIPES, SUBSIDIARY TO THE BID ITEM FOR "SITE CLEARING AND RESTORATION".

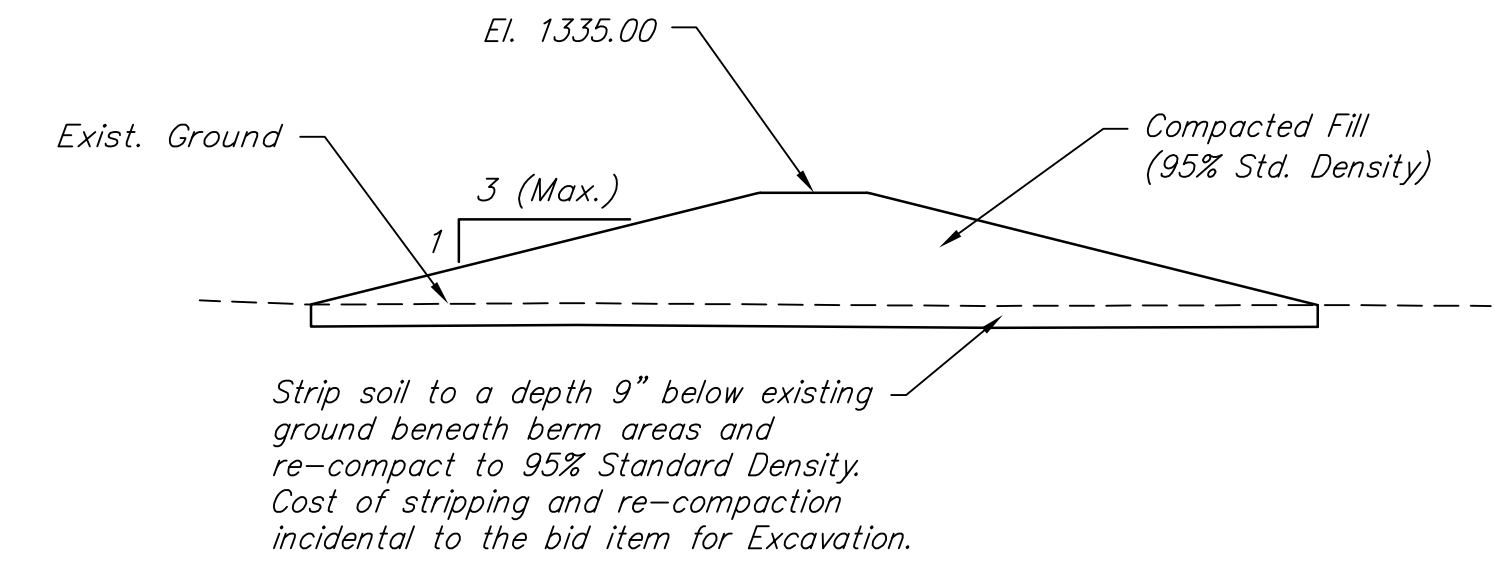
CONTRACTOR TO TRIM OR REMOVE TREES ONLY AS NECESSARY FOR CONSTRUCTION.

PLACE 165 S.Y. LIGHT STONE RIPRAP AS INDICATED.

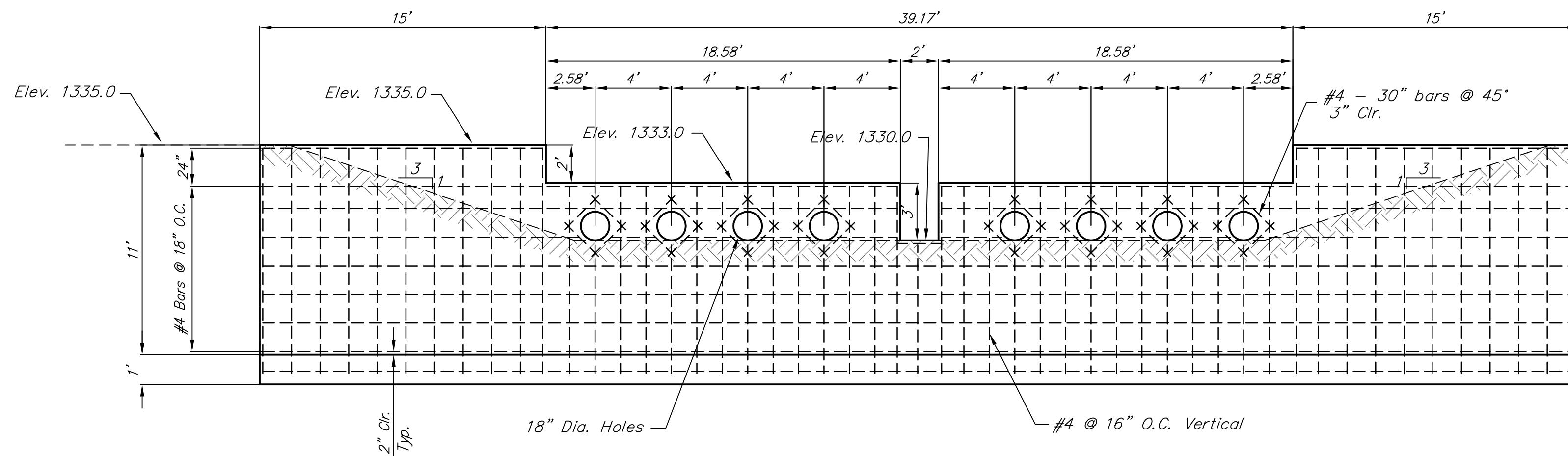
45' SANITARY SEWER ESM'T. (DOCUMENT #28742698)



SECTION VIEW



BERM DETAIL



WEIR WALL DETAIL

Air Entrained Concrete: $F_c = 4000$ psi @ 28 days
 Reinforcing: $F_y = 60000$ psi
 Cover over Reinforcing is 2" Clear unless otherwise noted.

TARA CREEK ADDITION WEIR WALL DETAILS WICHITA, KANSAS			
	Ruggles & Bohm, P.A. Engineering, Surveying, Land Planning		DESIGN KWL
	924 North Main Wichita, Kansas 67203 www.rbkansas.com		(316) 264-8008 (316) 264-4621 fax E-mail: info@rbkansas.com
DRAWING FILE weir wall {Layout1}		PROJECT NUMBER .	DATE Sept. 26, 2007
			SHEET 4 OF 16