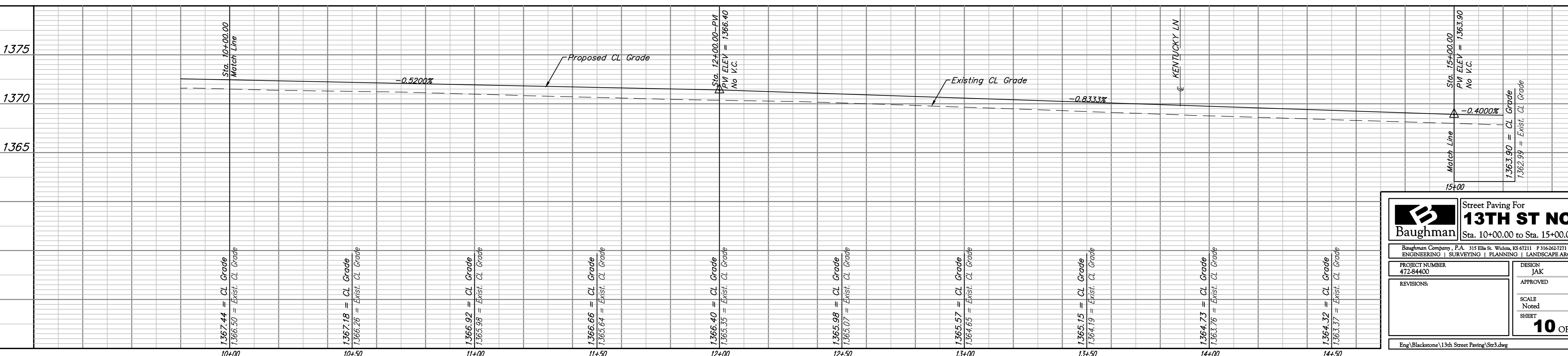
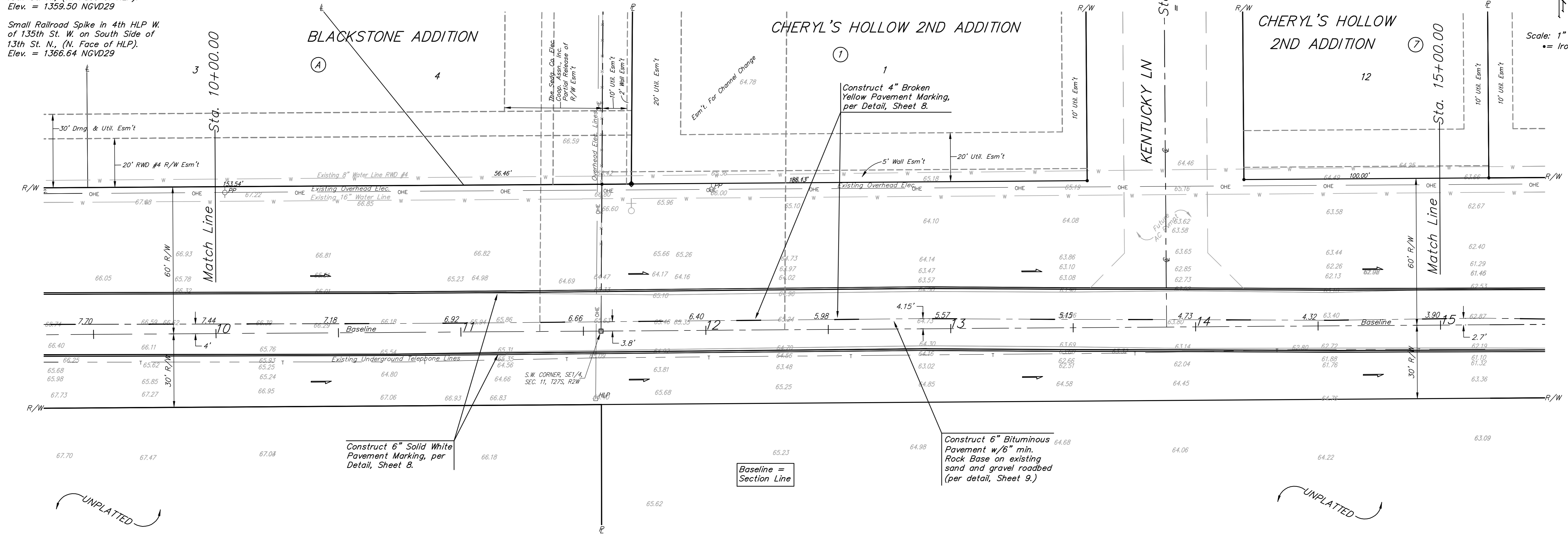
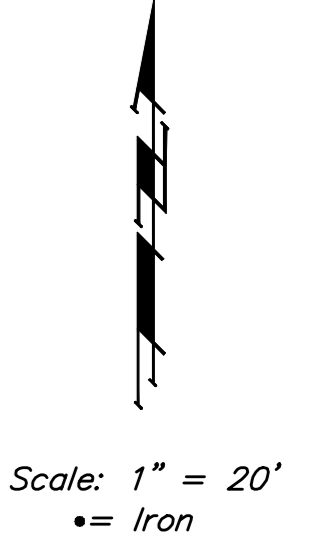


**BENCHMARKS:**  
 City of Wichita Disc at Southwest  
 Corner of 135th St. W. & 13th St. N  
 30.00'± S. of  $\odot$   
 35.00'± W. of  $\odot$   
 Elev. = 1355.65 NGVD29

Small Railroad Spike in 2nd HLP W.  
 of 135th St. W. on South Side of  
 13th St. N., (N. Face of HLP).  
 Elev. = 1359.50 NGVD29

Small Railroad Spike in 4th HLP W.  
 of 135th St. W. on South Side of  
 13th St. N., (N. Face of HLP).  
 Elev. = 1366.64 NGVD29



**Baughman** Street Paving For  
**13TH ST NORTH**  
 Sta. 10+00.00 to Sta. 15+00.00

Baughman Company, P.A. 315 Ellis St. Wichita, KS 67211 F 316-262-7271 F 316-262-0149  
 ENGINEERING | SURVEYING | PLANNING | LANDSCAPE ARCHITECTURE

PROJECT NUMBER 472-84400	DESIGN JAK	DRAWN JAK
REVISIONS:	APPROVED	DATE 10/03/07
SCALE Noted		<b>10 OF 17</b>
SHEET		

Eng:\Blackstone\13th Street Paving\Sr3.dwg 06-08-E617