

BENCHMARKS:
 City of Wichita Disc at Southwest
 Corner of 135th St. W. & 13th St. N
 30.00'± S. of \odot
 35.00'± W. of \odot
 Elev. = 1355.65 NGVD29

Small Railroad Spike in 2nd HLP W.
 of 135th St. W. on South Side of
 13th St. N., (N. Face of HLP).
 Elev. = 1359.50 NGVD29

Small Railroad Spike in 4th HLP W.
 of 135th St. W. on South Side of
 13th St. N., (N. Face of HLP).
 Elev. = 1366.64 NGVD29

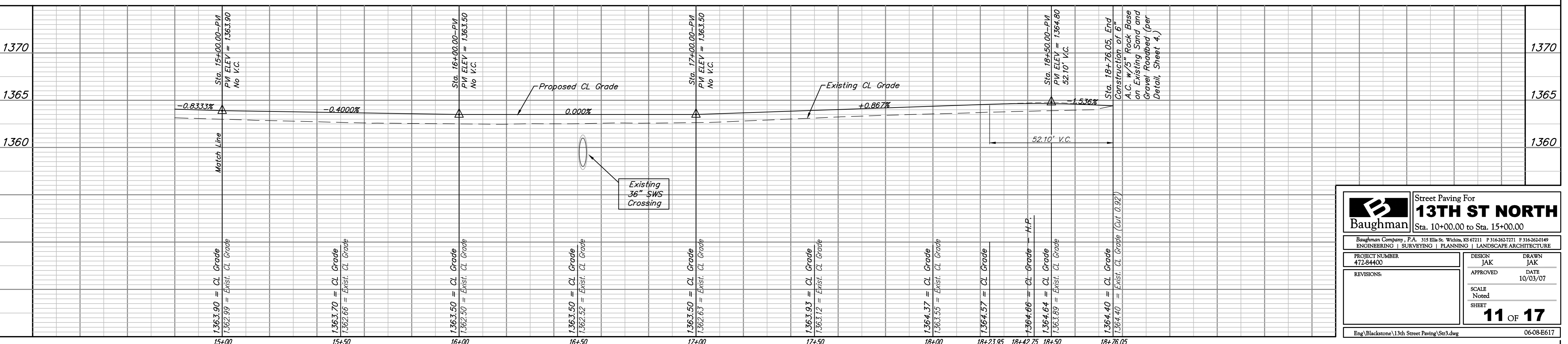
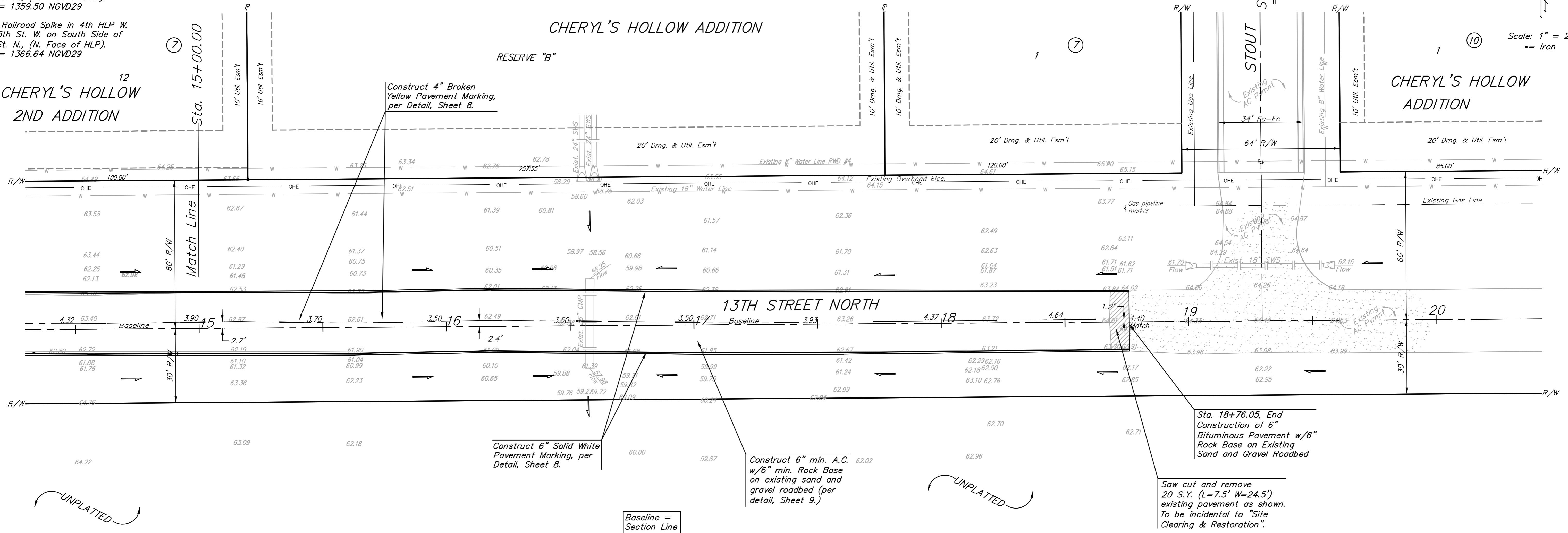
12
**CHERYL'S HOLLOW
 2ND ADDITION**

CHERYL'S HOLLOW ADDITION

RESERVE "B"

10
**CHERYL'S HOLLOW
 ADDITION**

Scale: 1" = 20'
 = Iron



		Street Paving For 13TH ST NORTH Sta. 10+00.00 to Sta. 15+00.00	
		<small>Baughman Company, P.A. 315 Ellis St. Wichita, KS 67211 F 316-262-7271 F 316-262-0149 ENGINEERING SURVEYING PLANNING LANDSCAPE ARCHITECTURE</small>	
PROJECT NUMBER 472-84400	DESIGN JAK	DRAWN JAK	
REVISIONS:	APPROVED 	DATE 10/03/07	
SCALE Noted			
SHEET 		11 OF 17	
<small>Eng\Blackstone\13th Street Paving\Sr3.dwg</small>			<small>06-08-E617</small>