

BENCHMARKS:

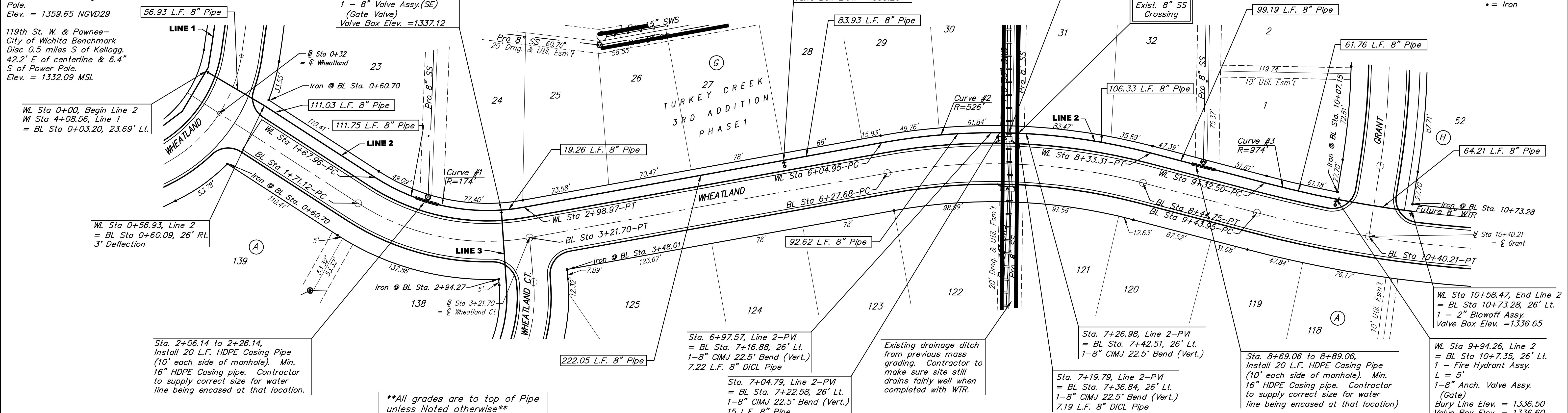
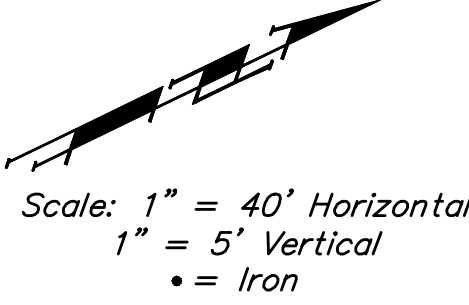
135th St. W. & Pawnee-
City of Wichita Benchmark
Disc on SW Corner of
Concrete Base of High Line
Pole.
Elev. = 1359.65 NGVD29

119th St. W. & Pawnee-
City of Wichita Benchmark
Disc 0.5 miles S of Kellogg,
42.2' E of centerline & 6.4'
S of Power Pole.
Elev. = 1332.09 MSL

WL Sta 0+00, Begin Line 2
WL Sta 4+08.56, Line 1
= BL Sta 0+03.20, 23.69' Lt.

WL Sta 2+79.71, Line 2
WL Sta 0+00, Line 3
= BL Sta 2+99.57, 26' Lt.
1 - 8"X8" Tee
1 - 8" Valve Assy.(SE)
(Gate Valve)
Valve Box Elev. =1337.12

WL Sta 5+21.02, Line 2
= BL Sta 5+43.75, 26' Lt.
1 - Fire Hydrant Assy.
L = 5'
Bury Line Elev. = 1335.10
Valve Box Elev. =1335.20

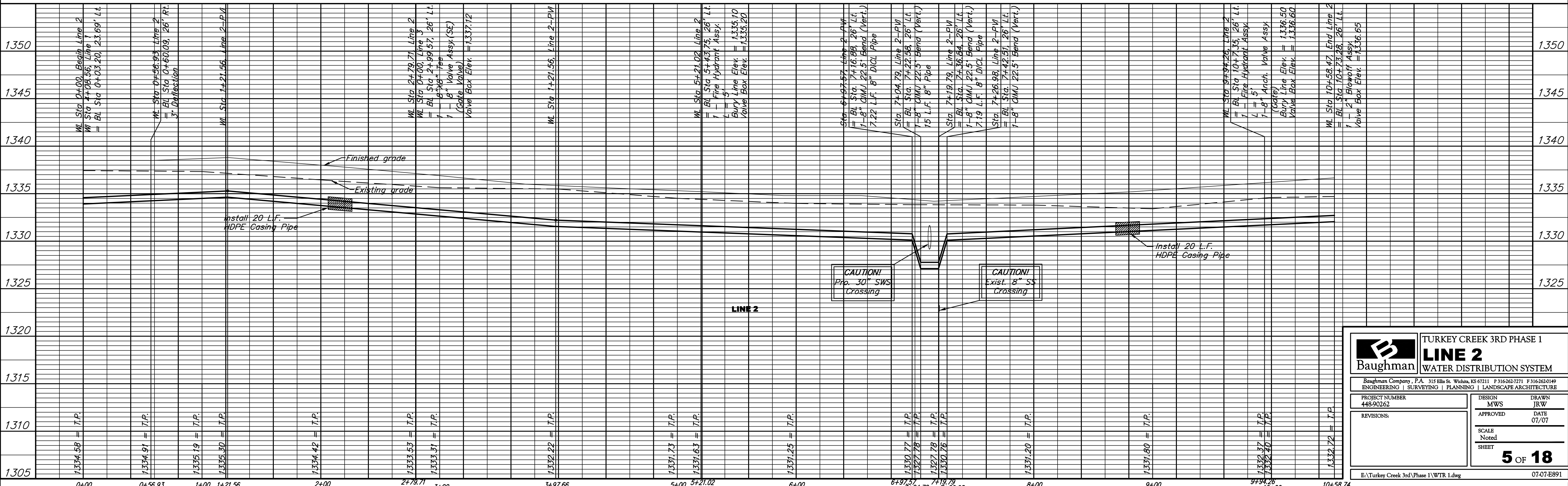


Sta. 2+06.14 to 2+26.14,
Install 20 L.F. HDPE Casing Pipe
(10' each side of manhole). Min.
16" HDPE Casing pipe. Contractor
to supply correct size for water
line being encased at that location.

****All grades are to top of Pipe
unless Noted otherwise****

Existing drainage ditch
from previous mass
grading. Contractor to
make sure site still
drains fairly well when
completed with WTR.

Sta. 8+69.06 to 8+89.06,
Install 20 L.F. HDPE Casing Pipe
(10' each side of manhole). Min.
16" HDPE Casing pipe. Contractor
to supply correct size for water
line being encased at that location)



		TURKEY CREEK 3RD PHASE 1	
		LINE 2	
WATER DISTRIBUTION SYSTEM			
<small>Baughman Company, P.A. 315 Ellis St. Wichita, KS 67211 P 316-643-7771 F 316-643-0149 ENGINEERING SURVEYING PLANNING LANDSCAPE ARCHITECTURE</small>			
PROJECT NUMBER 448-90262	DESIGN MWS	DRAWN JR/W	DATE 01/07
REVISIONS:	APPROVED	NOTED	SHEET
			5 OF 18
E:\Turkey Creek 3rd Phase 1\WTR 1.dwg			07-07-E891