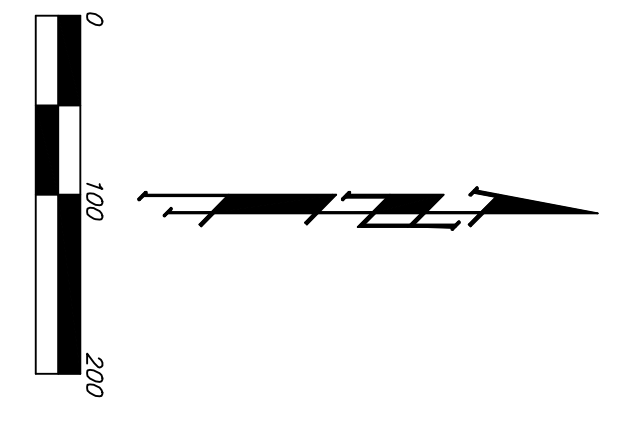
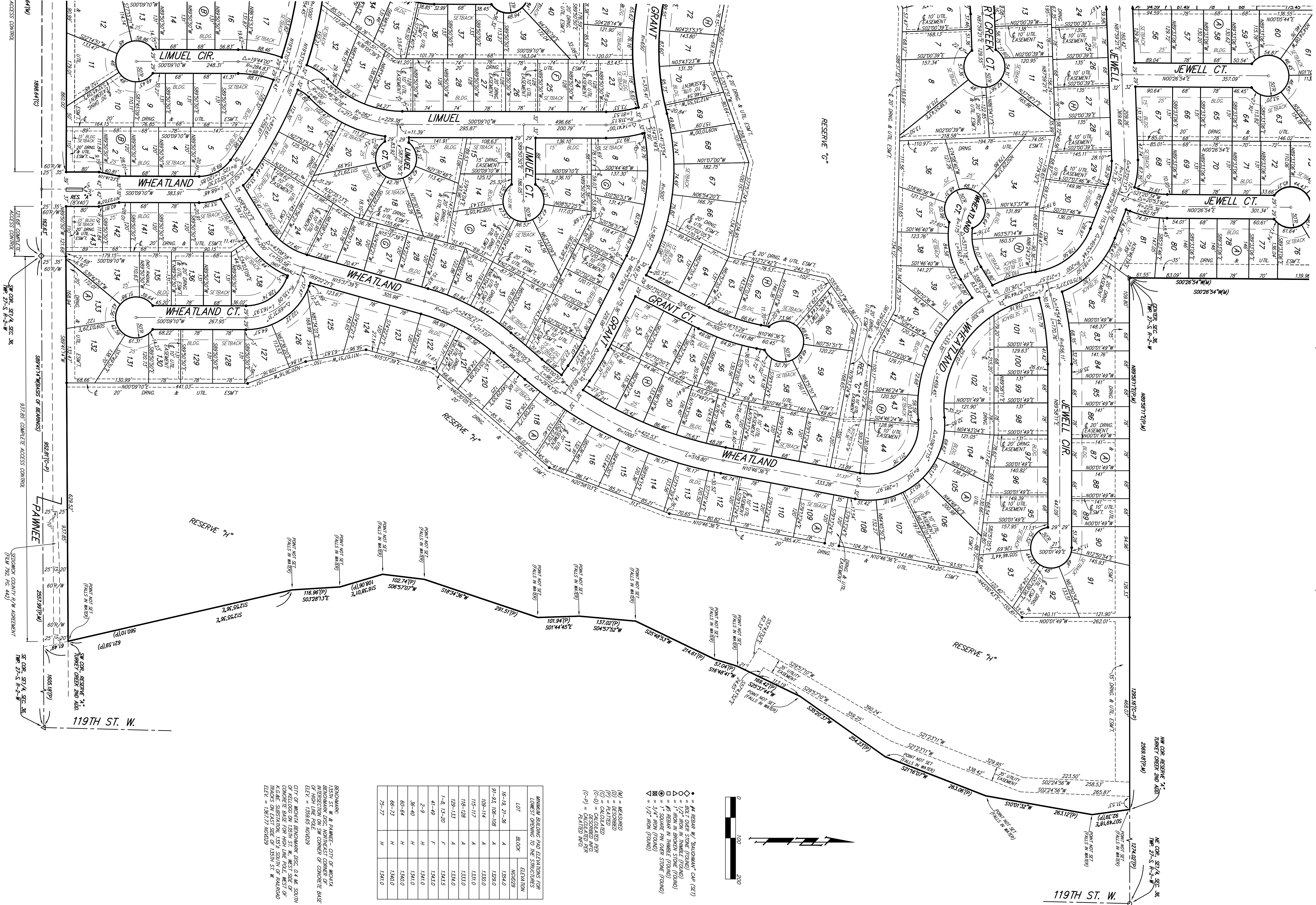


TURKEY CREEK 3RD ADDITION

WICHITA, SEDGWICK COUNTY, KANSAS



- #4 REBAR W/ BAUGHMAN CAP (SET)
- #4 REBAR (GROUND)
- ◇ #4 REBAR (GROUND)
- △ #4 REBAR IN BROKEN STONE (GROUND)
- #4 REBAR IN THUMBLE STONE (GROUND)
- #4 SQUARE PIN OVER STONE (GROUND)
- △ #4 SQUARE PIN OVER STONE (GROUND)
- ▽ 1/2" IRON (GROUND)

- (M) = MEASURED
- (P) = PLOTTED
- (C) = CALCULATED
- (-P) = CALCULATED PER PLATTED INFO

LOT	BLOCK	ELEVATION
16-19, 21-36	A	1284.0
91-93, 108-108	A	1289.0
109-114	A	1330.0
115-117	A	1331.0
118-128	A	1333.0
1-8, 13-20	F	1243.5
41-49	F	1243.0
2-9	H	1341.0
36-40	H	1341.0
60-64	H	1340.0
66-73	H	1340.0
75-77	H	1341.0

BENCHMARK: CITY OF WICHITA
 137TH ST. W. & PAWNEE - CITY OF WICHITA
 BENCHMARK: NORTH-EAST CORNER OF
 CONCRETE BASE FOR HIGH LINE PALE WEST OF
 K&K'S SUBSTATION, 1354 SOUTH OF PAULROAD
 ELEV. = 1361.17 (MDS03)