

KANSAS STATE BANK ADDITION

WICHITA, SEDGWICK COUNTY, KANSAS

State of Kansas) SS We, Baughman Company, P.A., Surveyors in
Sedgwick County) aforesaid county and state do hereby certify that we have surveyed and
platted "KANSAS STATE BANK ADDITION", Wichita, Sedgwick County, Kansas
and that the accompanying plat is a true and correct exhibit of the
property surveyed, described as and being a replat of all of Lots 9 and 10,
together with the north 60.00 feet of Lot 11, all in Verda Vista, Sedgwick
County, Kansas.

Existing public easements and dedications
being vacated by virtue of K.S.A. 12-512(b).
All being situated in the SW1/4 of Sec. 29,
R-1-W of the 6th P.M., Sedgwick County, Kansas.

Baughman Company, P.A.

_____, Surveyor
Michael G. Conrey

This plat of "KANSAS STATE BANK ADDITION",
Wichita, Sedgwick County, Kansas has been submitted to and approved by
the Wichita-Sedgwick County Metropolitan Area Planning Commission,
Wichita, Kansas.

Dated this _____ day of _____, 2007.
Wichita-Sedgwick County Metropolitan Area Planning Commission

_____, Chair
Darrell A. Downing

_____, Secretary
John L. Schlegel

This plat approved and all dedications
shown hereon accepted by the City Council of the City of Wichita,
Kansas, this _____ day of _____, 2007.

_____, Mayor
Carl Brewer

_____, City Clerk
Karen Sublett

Reviewed in accordance with K.S.A. 58-2005
on this _____ day of _____, 2007.

_____,
Tricia L. Robello, L.S. #1246
Deputy County Surveyor
Sedgwick County, Kansas

_____, Authorized
Signatory
James D. Ashcraft

Entered on transfer record this _____ day
of _____, 2007.

_____, County Clerk
Dan Brace

State of Kansas) SS This is to certify that this plat has been
Sedgwick County) filed for record in the office of the Register of Deeds, this _____ day
of _____, 2007 at _____ o'clock _____ M.; and is duly recorded.

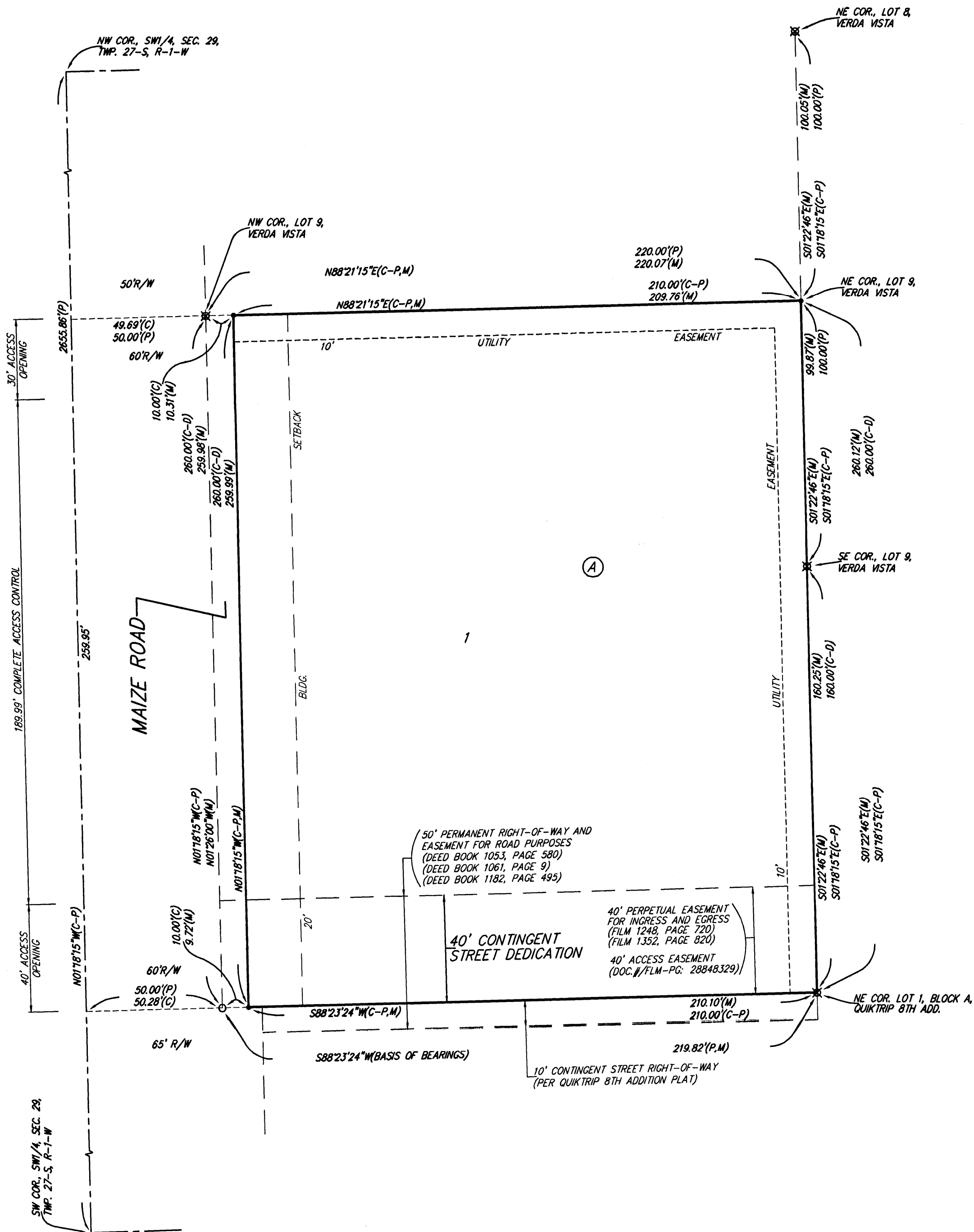
_____, Register of Deeds
Bill Meek

_____, Deputy
Tonya Buckingham

State of Kansas) SS The foregoing instrument acknowledged before
Sedgwick County) me, this _____ day of _____, 2007, by James D. Ashcraft,
Authorized Signatory for Key South Limited Liability Company, a Kansas
limited liability company, on behalf of the limited liability company.

_____, Notary Public

My App't. Exp. _____



- = #4 REBAR W/ "BAUGHMAN" CAP (SET)
- ⊗ = 3/4" IRON (FOUND)
- = 1/2" IRON (FOUND)

- (M) = MEASURED
- (P) = PLATTED
- (C) = CALCULATED
- (C-P) = CALCULATED PER PLATTED INFO
- (C-D) = CALCULATED PER DESCRIBED INFO

NOTE:
A drainage plan has been developed for this subdivision and is on file with
the City of Wichita, Kansas. Drainage intent shall remain as depicted or as
modified with the approval of the City Engineer of the City of Wichita,
Kansas. No obstructions which impede the flow of this drainage plan shall
be allowed.