

WATER LINE PLANS (PRIVATE)

TO SERVE

WAL★MART SUPERCENTER #4321-00

WICHITA, KANSAS

NW 53RD ST. NORTH & N. MERIDIAN

2007

As Built Plans:
 CONTRACTOR: Utility Contractors
 INSPECTOR: Larry Gann, K E Miller Engineering
 .PDF by: NWS, 10-10-07

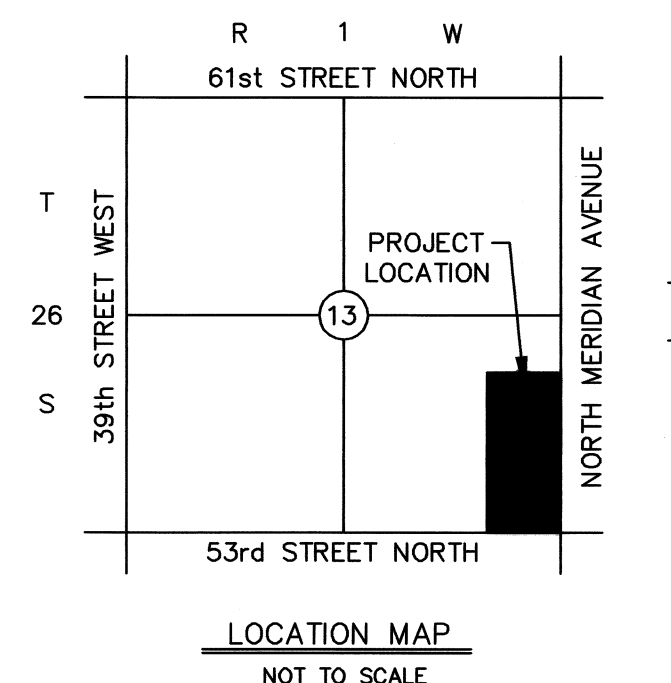
CITY OF WICHITA PRIVATE PROJECT NO. 1304PPW607853
 JAMES ARMOR, P.E., CITY ENGINEER

RESOURCE LIST

- | | |
|--|---|
| <p>GAS COMPANY
 AQUILA GAS COMPANY
 1611 SOUTH HOOVEER
 WICHITA, KANSAS 67209
 PH: (316) 941-1608
 CONTACT: CALVIN BRIGGS</p> <p>KANSAS GAS SERVICE
 1021 EAST 26TH STREET NORTH
 WICHITA, KANSAS 67219
 PH: (316) 832-3101
 CONTACT: CHARLENE LAWLESS</p> <p>KANSAS DEPT. OF TRANSPORTATION (KDOT)
 DISTRICT 5 (SOUTH CENTRAL DIVISION)
 ROBERT COOK - DISTRICT ENGINEER
 PH: (620) 663-3361</p> <p>CIVIL ENGINEERS
 SMC CONSULTING ENGINEERS, P.C.
 TERENCE L. HAYNES, P.E.
 815 WEST MAIN ST.
 OKLAHOMA CITY, OK 73106
 PH: (405) 232-7715
 FAX: (405) 232-7859</p> | <p>ELECTRIC COMPANY
 WESTAR ENERGY
 201 NORTH MARKET
 WICHITA, KS 67202
 PH: (316) 261-6824
 CONTACT: SHANE PRICE</p> <p>WATER & SEWER COMPANY
 CITY OF WICHITA, KS
 CITY HALL 455 NORTH MAIN
 WICHITA, KS 67202
 PH: (316) 268-4555
 FAX: (620) 421-7089
 CONTACT: BILL PERKINS</p> <p>PLANNING / ZONING
 CITY OF WICHITA
 METROPOLITAN AREA PLANNING
 DEPARTMENT
 CITY HALL - 10TH FLOOR
 455 NORTH MAIN
 WICHITA, KANSAS 67202
 PH: (316) 268-4421
 CONTACT: DONNA GOLTRY</p> <p>TELEPHONE COMPANY
 SOUTHWESTERN BELL
 154 NORTH BROADWAY, ROOM 210
 WICHITA, KS 67202
 PH: (316) 268-2245
 CONTACT: BOB ALLEY</p> |
|--|---|

OWNERS' ADDRESS

WAL-MART STORES, INC.
 702 S.W. 8TH STREET
 BENTONVILLE, AR 72716
 PH. (479) 273-4000



NOTE TO CONTRACTOR
CALL KANSAS ONE
1-800-522-6543

This number is to be used for information on the location of all underground utilities. Contact this number prior to any excavation.

INDEX OF SHEETS

- C-9.1 TITLE SHEET
- C-9.2 WATER LINE LOCATON PLAN
- C-9.3 WATER LINE 'A' PLAN & PROFILE
- C-9.4 WATER LINE 'A' (CONT.) PLAN & PROFILE
- C-9.5 WATER LINE 'A' (CONT.) PLAN & PROFILE
- C-9.6 WATER LINE 'A' (CONT.) PLAN & PROFILE
- C-9.7 WATER LINE 'A' (CONT.) PLAN & PROFILE
- C-9.8 WATER LINE 'A' (CONT.) PLAN & PROFILE
- C-9.9 STANDARD VAULT DETAILS & METER ASSEMBLIES
- C-9.10 STANDARD WATER ASSEMBLY DETAILS

APPROVED AS NOTED
 BY CITY ENGINEER OF WICHITA

Sanitary Sewers:
 Water Mains (Public Works) 3/21/07
 Storm Sewers (Public Works) 3/21/07
 Water Mains (F. Dept.) 3/21/07
 Driveway Approaches (WFD) 3/21/07
 Water Mains (W&S) 3/21/07

NOTE TO CONTRACTOR

INSPECTION AND TESTING FOR THIS PROJECT IS TO BE PROVIDED BY A LICENSED CONSULTING ENGINEERING FIRM UNDER CONTRACT WITH THE OWNER/DEVELOPER. SAID INSPECTION TO BE IN ACCORDANCE WITH THE CITY OF WICHITA STANDARD CONSTRUCTION ENGINEERING PRACTICES AND CERTIFIED BY A LICENSED PROFESSIONAL ENGINEER. NO WORK SHALL BE PERFORMED IN DEDICATED EASEMENTS OR THE PUBLIC RIGHT-OF-WAY BY THE CONTRACTOR WITHOUT SUCH INSPECTION NOR SHALL ANY WORK BE COMMENCED IN DEDICATED EASEMENT OR ANY RIGHT-OF-WAY WITHOUT WRITTEN AGREEMENT BY THE CITY ENGINEER.

BENCH MARKS:

- | | | |
|--|--|--|
| BM #1
R.R. SPIKE IN WEST SIDE OF P.P. AT N.E.N. CORNER OF INTER. 53rd AND MERIDIAN
ELEV=1332.96 | BM #2
R.R. SPIKE IN NORTH SIDE OF P.P. WEST OF MERIDIAN ON SOUTH SIDE OF 53rd STREET
ELEV=1331.15 | BM #3
R.R. SPIKE IN NORTH SIDE OF 4th P.P. WEST OF MERIDIAN ON SOUTH SIDE OF NW 53rd
ELEV=1332.60 |
| BM #4
R.R. SPIKE IN NORTH SIDE OF 6th P.P. WEST OF MERIDIAN ON SOUTH SIDE OF NW 53rd
ELEV=1333.28 | BM #5
CUT "X" ON T/C ON E. SIDE OF MERIDIAN W OF S PI IN SWLK & APRX 65' S OF DR 5474 MERIDIAN
ELEV=1332.91 | BM #6
CUT "X" ON SOUTH END OF CONC. HOOD INLET ON EAST SIDE OF MERIDIAN AT 5536 MERIDIAN
ELEV=1332.16 |

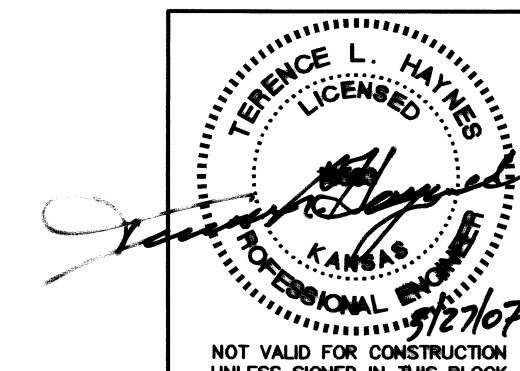
1. An effort has been made to locate and show approximate location of underground utilities. Buried utilities are not necessarily shown. It is the Contractors responsibility to locate and preserve all utility services.
2. Proposed utility services have been coordinated with the local utility companies. Contractor is responsible for contacting all utility companies prior to construction.
3. All quantity estimates shown in this set of plans are the Engineer's estimate and are provided for general information only. The Contractor is solely responsible for calculating his own quantities.
4. All construction shall be done in accordance with Wal-Mart Sitework Specifications, and where applicable, as per the City of Wichita's Standard Specifications for Public Improvements and Kansas Department of Transportation's Standard Specifications for Highway Construction, latest edition.

I, Terence L. Haynes, Kansas Professional Engineer #14583, do hereby state that these private water line plans, prepared by me or under my direct, responsible supervision, are in strict conformance with the applicable Codes of the City of Wichita and the sound principles and practice of the Civil Engineering profession

Terence L. Haynes
 TERENCE L. HAYNES, P.E. #14583

REVIEWED BY: _____ DATE: _____
 CITY ENGINEER

TITLE SHEET		
PRIVATE WATER LINE PLANS		
WAL-MART SUPERCENTER #4321-00		
N.W. 53rd ST. NORTH & N. MERIDIAN		
WICHITA, KANSAS		
SMC Consulting Engineers, P.C.		
<small>815 West Main - Oklahoma City, OK 73106 PH: 405-232-7715 Fax: 405-232-7859 KANSAS CERTIFICATE OF AUTHORIZATION NO. E-335 EXP. DEC. 31, 2008</small>		
SMC		
No. Revision	By	Date
17	UPDATE PER CITY COMMENTS	DES 03/27/07
DATE: 03/14/07		
SCALE: NONE		
DRAWN BY: MDS		
PROJECT NO.: 4344.00		
ENGINEER: TERENCE L. HAYNES, P.E. #14583		
SHEET NO. C-9.1		



SMC Consulting Engineers, P.C.
 Oklahoma City, Oklahoma