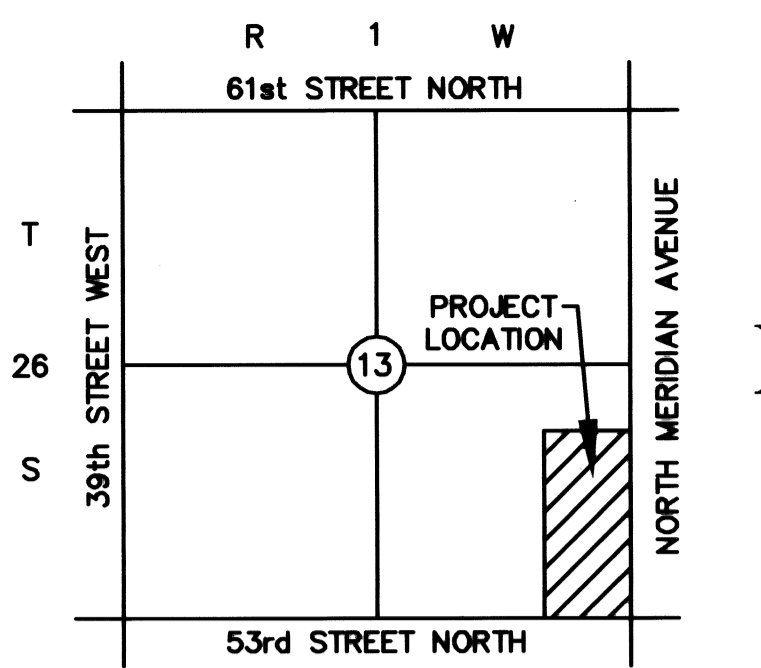
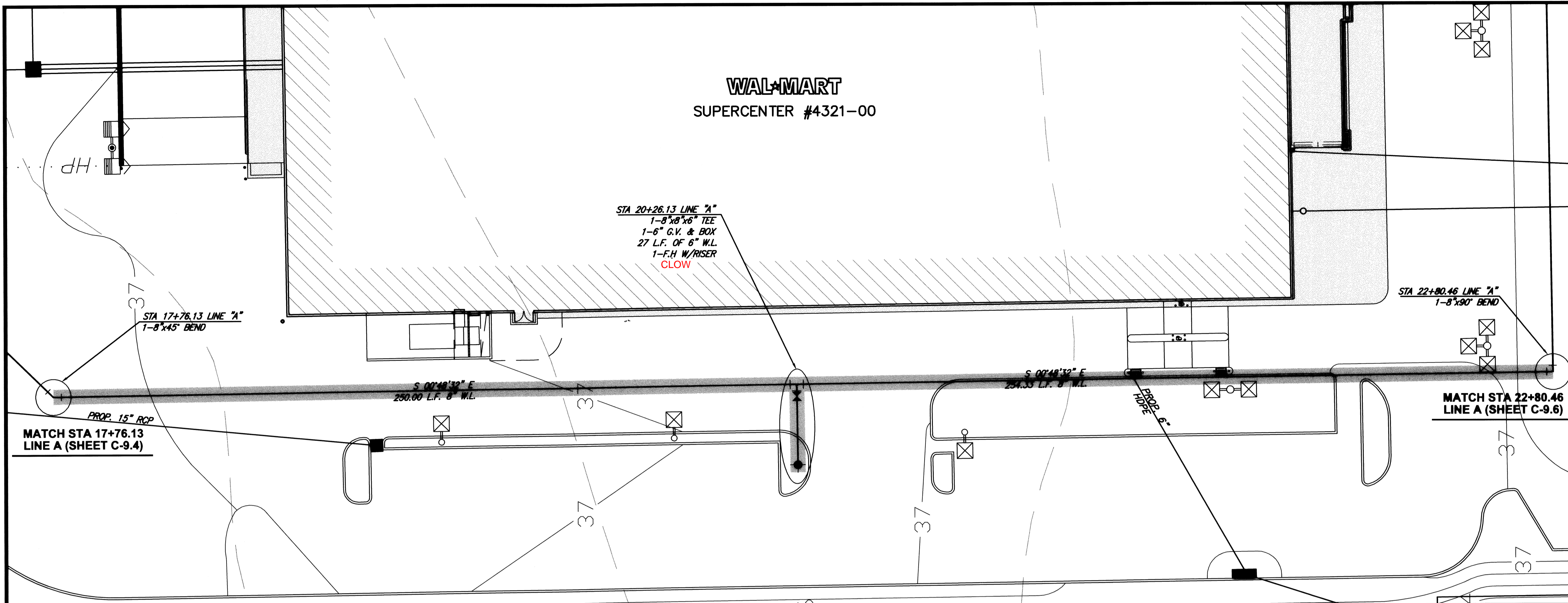


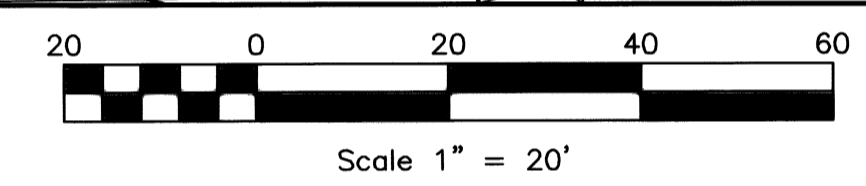
**WAL-MART**  
SUPERCENTER #4321-00



**LOCATION MAP**  
NOT TO SCALE

**LEGEND**

—	SIGN (i.e. STOP, YIELD, etc...)	—1521—	PROPOSED CONTOUR & CONTOUR ELEVATION
KV □ □	LIGHT POLE AND FIXTURE TYPE	■	STORM SEWER INLET
■	HEAVY DUTY CONCRETE (H.D.C.)	●	STORM SEWER CURB INLET
■	HEAVY DUTY ASPHALT (H.D.A.)	○	STORM SEWER MANHOLE (STS M.H.)
□	STANDARD DUTY ASPHALT (S.D.A.)	○	S.S. MANHOLE
—	CONCRETE BARRIER	○	S.S. CLEANOUTS
→	STRAIGHT ARROW	—	FUTURE CURB & GUTTER BY OTHERS
↶	LEFT TURN ARROW	—UG—	POWER UNDERGROUND
↷	RIGHT TURN ARROW	—UTE—	TELEPHONE UNDERGROUND
⊕	3 WAY FIRE HYDRANT	—	POWER OVERHEAD
⊕	TEE	—G—	GAS LINE
⊕	GATE VALVE	—	FLOW DIRECTION
□	CART CORRALS	—STS—	STORM SEWER
L.S.	LANDSCAPE		



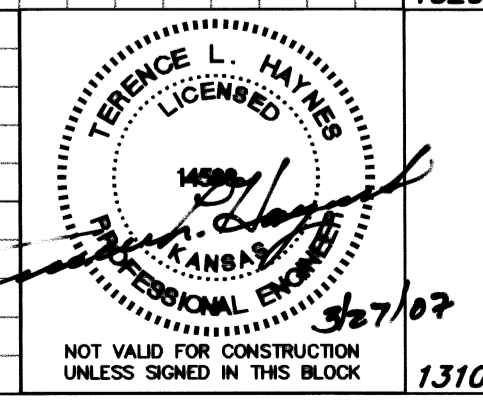
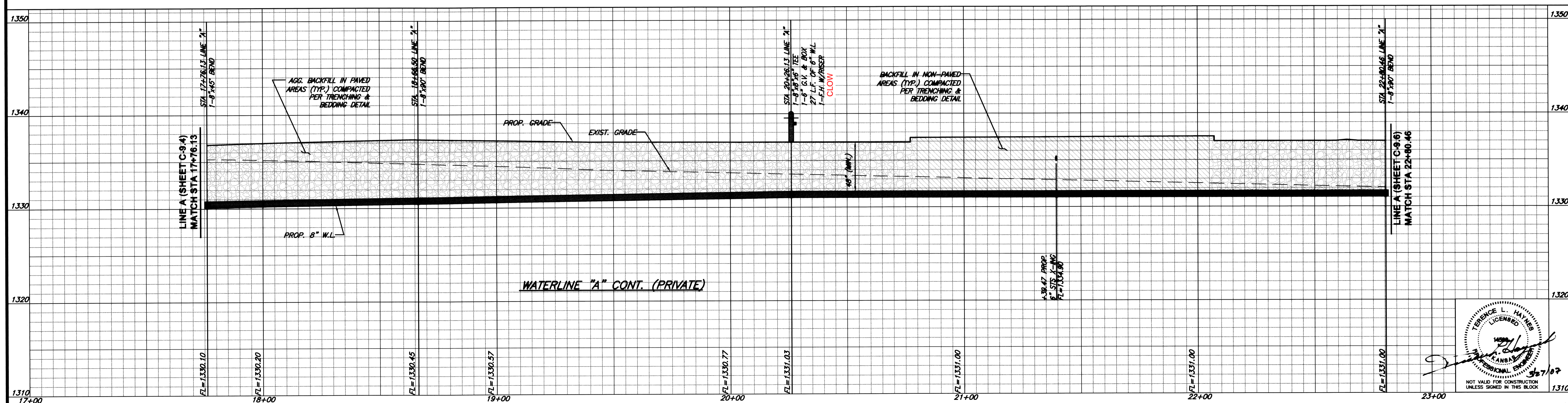
- BACKFILL NON-PAVED AREA
- BACKFILL PAVED AREA
- COMPACT FILL AREA

1. USE RESTRAINED JOINTS ON VERTICAL BENDS. ALL PRIVATE WATER PIPE LINES SHALL BE AWWA C-900 PVC DR-14 (CLASS 150) UNLESS OTHERWISE NOTED.
2. CONTRACTOR SHALL INSTALL #12 COATED COPPER WIRE OVER PVC WATER LINE.
3. STEAMER NOZZLE ELEVATION OF THE FIRE HYDRANT SHALL BE BETWEEN 18" TO 24" ABOVE THE FINISHED GRADES.
4. REFER OTHER PLAN & PROFILE SHEETS FOR FITTINGS NOT LISTED HERE.
5. THE GENERAL CONTRACTOR IS RESPONSIBLE FOR MAKING ALL ADJUSTMENTS OF EXISTING UTILITIES TO ALLOW THE DESIGN TO BE BUILT.

CONTRACTOR SHALL REF. TRENCHING AND BEDDING DETAIL FOR BACKFILL AND BEDDING UNDER PAVED & NON-PAVED AREAS. COMPACT FILL SHALL BE LOW VOLUME CHANGE SOIL WITH PLASTICITY INDEX BETWEEN 5-18 AND LIQUID LIMIT NOT TO EXCEED 40.

**CAUTION - NOTICE TO CONTRACTOR**  
THE CONTRACTOR IS SPECIFICALLY CAUTIONED THAT THE LOCATION AND/OR ELEVATION OF EXISTING UTILITIES AS SHOWN ON THESE PLANS IS BASED ON RECORDS OF THE VARIOUS UTILITY COMPANIES AND WHERE POSSIBLE, MEASUREMENTS TAKEN IN THE FIELD. THE INFORMATION IS NOT TO BE RELIED ON AS BEING EXACT OR COMPLETE. THE CONTRACTOR MUST CALL THE APPROPRIATE UTILITY COMPANY AT LEAST 48 HOURS BEFORE ANY EXCAVATION TO REQUEST EXACT FIELD LOCATION OF UTILITIES. IT SHALL BE THE RESPONSIBILITY OF THE CONTRACTOR TO RELOCATE ALL EXISTING UTILITIES WHICH CONFLICT WITH THE PROPOSED IMPROVEMENTS SHOWN ON THE PLANS.

**NOTE: THE GENERAL CONTRACTOR IS RESPONSIBLE FOR MAKING ALL ADJUSTMENTS OF EXISTING UTILITIES TO ALLOW THE DESIGN TO BE BUILT.**



G:\4544\Waterline\4544wp03.dwg, 3/27/2007 1:46:09 PM, DonLS