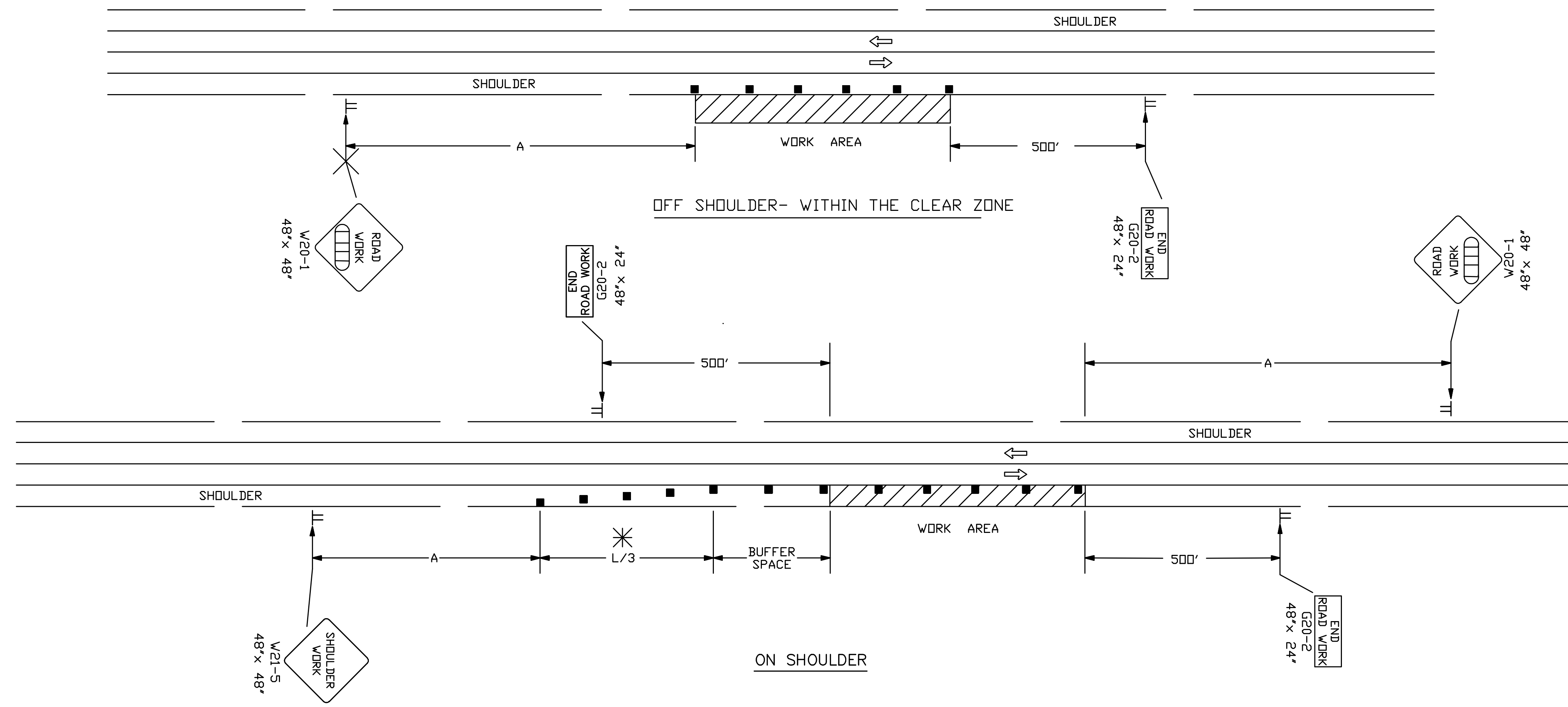


REFER TO STD. TE710 FOR ADDITIONAL INFORMATION ON TRAFFIC CONTROL SIGNS AND SIGN SPACING.
 REFER TO STD. TE702 FOR INFORMATION ON TAPERS AND CHANNELIZING DEVICES.
 REFER TO STD. TE700 FOR LENGTH OF BUFFER SPACE.

NOTE: NO TRAFFIC CONTROL IS REQUIRED IF THE WORK AREA IS LOCATED OUTSIDE OF THE CLEAR ZONE.

FOR OPERATIONS OF 60 MINUTES OR LESS, ALL SIGNS AND CHANNELIZING DEVICES MAY BE ELIMINATED IF A VEHICLE WITH AN ACTIVATED FLASHING OR REVOLVING YELLOW LIGHT IS USED.



WHEN CONCRETE SAFETY BARRIER IS USED, CHANNELIZING DEVICES ARE NOT NEEDED ALONG THE TANGENT BARRIER SECTION.

* OMIT TAPER IF PAVED SHOULDER IS LESS THAN 8' WIDE.

□ Channelizing Device
 ▭ AHEAD, 1500 FT OR 1 MILE

NO.	DATE	REVISIONS	BY	APP'D
3	12-29-05	UPDATED END ROAD WORK SIGN DESIGNATION	M.B.	AAA.
2	11-19-03	CHANGED BORDER	B.H.	S.A.B.
1	9-26-02	REMOVED G20-1 SIGNS	M.H.	S.A.B.

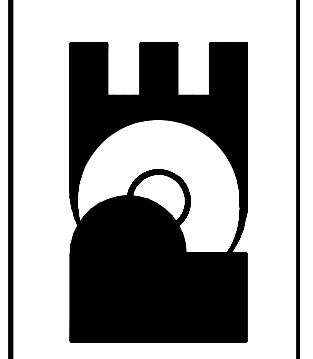
KANSAS DEPARTMENT OF TRANSPORTATION
 TYPICAL TRAFFIC CONTROL
 WORK ON OR NEAR THE SHOULDER
 UNDIVIDED HIGHWAY (2 OR 4 LANE)
 TE720 9/1/00

DESIGNED	L.E.R.	DETAILED	B.A.H.	QUANTITIES	TRACED
DESIGN OK		DETAIL OK		QUAN. OK	TRACE OK

No.	Date	By	Approved	Revision

SERENDIPITY ADDITION
 WATER DISTRIBUTION SYSTEM IMPROVEMENTS
 TRAFFIC CONTROL DETAILS
 CITY OF WICHITA, KANSAS
 JAMES L. ARMOUR, P.E. - CITY ENGINEER
 Proj. #448-30296 O.C.A. #635684

POE & ASSOCIATES, INC.
 CONSULTING ENGINEERS
 5940 E. Central, Suite 200 - Wichita, KS 67208-4242
 Phone 316/685-4114 - FAX 316/685-4444



FINAL
 Designed By: J. Dickman & J. Ubert
 Drawn By: M. Tucker
 P.O. Job No.: 1906A
 Date: July 2007