

**2-1**

CITY HALL

MH # 5447-064  
Reconstruct Manhole  
(located in grass)  
Approx depth = 5.3 ft

MH # 5447-063  
Reconstruct Manhole  
Approx depth = 4.6 ft

MH # 5447-062  
Reconstruct Manhole  
Approx depth = 6.0 ft

Remove and replace 311 lf of 8" Pipe

Remove & Replace 17 lf Concrete Approach (N)  
Remove & Replace 37 lf of Pavement  
Remove & Replace 16 lf of Concrete Approach (S)  
(in 3rd Street right-of-way)

Remove & Replace 305 lf of Pavement  
(in alley right-of-way)

Remove 274 lf of 8" VCP with 6" HDPE  
slipliner and install 274 lf of 8" pipe

CENTRAL

WACO

3RD ST.

RIVERVIEW

Post Office

WICHITA

293'

311'

274'

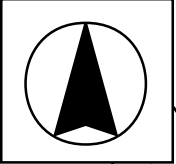
113'

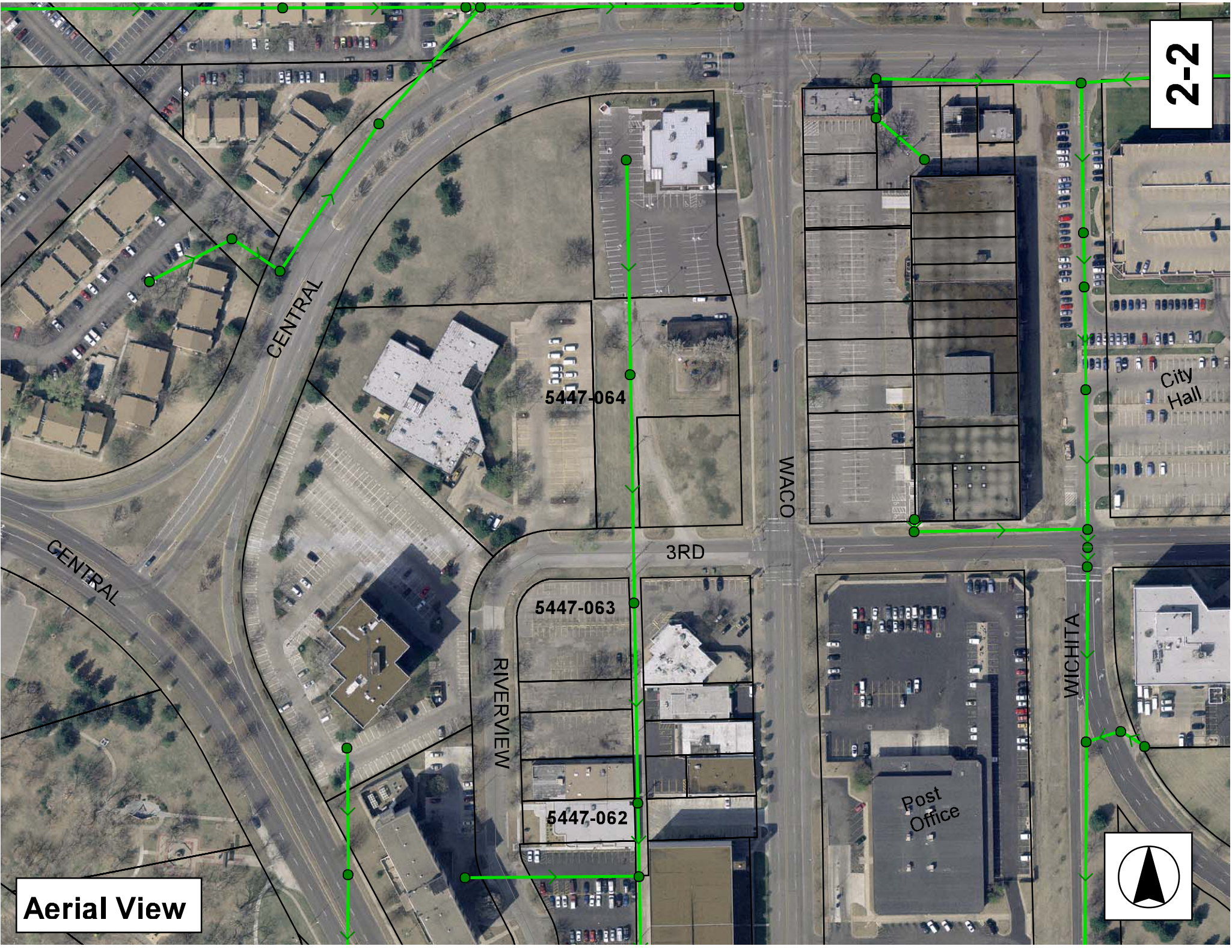
(unpaved) 8" VCP

(paved alley)

8" VCP with  
6" HDPE Slipliner

**SITE 2**





Aerial View

# Television Inspection Master Report

9/11/2007  
1:00:12PM

US Manhole: 5447-064      431 N WACO AVE      Date Insp: 11/8/2004      Basin: C03B  
 DS Manhole: 5447-063      355 N WACO AVE      Dir Televised: Upstream To Downstream

## Pipe Information

Shape: Round      Length Status:      Project No.: H-278  
 Dia/Ht Width: 8      Material: VCP      Index:  
 Length: 311.0      Slope: 1.000      Surface:  
 Comment: LINE REPAIR BY SEWER MAINTENANCE FROM 218' TO 221' SOUTH OF #064 01-17-2001 TGC WICHITA PUBLIC SCHOOLS FIBER OPTICS CONDUIT WAS CAUSE OF BREAK #####

## Inspection Information

Crew: 694      Percent Full: 10      Tape ID: DVD #0089  
 Weather: Cloudy      Purpose: TV Existing Line      Counter Start:

Obs. #	VTR Counter	Distance	Location	Description	Obs Rating	Obsrvd (gpm)	Est. (gpm)	Ratings Struct	Clean	Remain (gpm)
1		0.0	US Manhole	5447-064						0.000
			(lots of debris in invert of the pipe)							
2		78.3	West	Break-In Conn	1		0.001	0	0	0.001
				432 W 3RD ST						
3		131.3	Invert	Sag begins						0.000
4		138.7	Invert	Sag ends						0.000
5		158.8	Invert	Sag begins						0.000
6		187.4	Invert	Sag ends						0.000
7		191.8	Invert	Sag begins						0.000
8		211.0	Joint	PVC POINT REPAIR BEGINS						
9		213.7	Joint	PVC POINT REPAIR ENDS						
10		223.0	Joint	PVC POINT REPAIR BEGINS						
11		226.4	Joint	PVC POINT REPAIR ENDS						
12		310.7	DS Manhole	5447-063						

Sags are not real bad, but there is a history of maintenance problems on this line. Replacement requested by Sewer Maintenance.

2-3

# Television Inspection Master Report

9/11/2007  
1:00:12PM

US Manhole: 5447-063                      355 N WACO AVE                      Date Insp: 11/8/2004                      Basin: C03B  
Dir Televised: Upstream To Downstream

DS Manhole: 5447-062                      326 N RIVERVIEW ST

## Pipe Information

Shape: Round                      Length Status:                      Project No.: B-181  
Dia/Ht Width: 8                      Material: VCP                      Liner: 6" HDPE Slipliner  
Length: 273.2                      Slope: 1.000                      Surface:

Pipe Sec Length:                      Comment: LINE REPAIR BY SEWER MAINTENANCE FROM 207' TO 210' SOUTH OF #063 01-16-2001 TGC  
##### LATERAL REPAIRED BY SEWER MAINTENANCE BY REPLACEING PVC "TEE" ON HDPE  
PIPE 01-19-2001 TGC #####

## Inspection Information

Crew: 694                      Percent Full: 10                      Tape ID: DVD #0089  
Weather: Cloudy                      Purpose: TV Existing Line                      Counter Start:

Obs. #	VTR Counter	Distance	Location	Description	Obs Rating	Obsrvd (gpm)	Est. (gpm)	Ratings Struct	Clean	Remain (gpm)
1		0.0	US Manhole	5447-063						0.000
2		38.8	Invert	Sag Begins						0.000
3		42.0	Camera Lens	Submerged						0.000
4		51.8	Joint	PVC POINT REPAIR BEGINS						
5		<b>52.3</b>	<b>East</b>	<b>Break-In Conn</b>	1		0.001	0	0	0.001
				<b>355 N WACO (tap located within a fairly bad sag)</b>						
6		53.0	Joint	PVC POINT REPAIR ENDS						
7		53.8	Camera Lens	Emerged						0.000
8		56.5	Invert	Sag Ends						0.000
9		82.8	Invert	Sag Begins						0.000
10		<b>142.1</b>	<b>East</b>	<b>Break-In Conn</b>	1		0.001	0	0	0.001
				<b>345 N WACO</b>						
11		153.8	Invert	Sag Ends						0.000
12		168.4	Invert	Sag Begins						0.000
13		179.3	Invert	Sag Ends						0.000
14		185.7	Invert	Sag Begins						0.000
15		187.4	Joint	PVC POINT REPAIR BEGINS						
16		<b>189.4</b>	<b>East</b>	<b>Break-In Conn</b>	1		0.001	0	0	0.001
				<b>355 N WACO / PVC</b>						
17		190.3	Joint	PVC POINT REPAIR ENDS						
18		207.7	Invert	Sag Begins						0.000
19		247.4	Invert	Sag Ends						0.000
20		<b>255.2</b>	<b>West</b>	<b>Break-In Conn</b>	1		0.001	0	0	0.001
				<b>332 N RIVERVIEW / PVC</b>						
21		263.0	Joint	PVC POINT REPAIR BEGINS						
22		<b>264.2</b>	<b>East</b>	<b>Break-In Conn</b>	1		0.001	0	0	0.001
				<b>331 N WACO / PVC</b>						
23		264.5	Joint	PVC POINT REPAIR ENDS / PIPE WAS NOT PUSHED HOME. GASKET IS DAMAGED AND COMING OFF OF PIPE						
24		275.1	DS Manhole	5447-062						0.000

2-4