

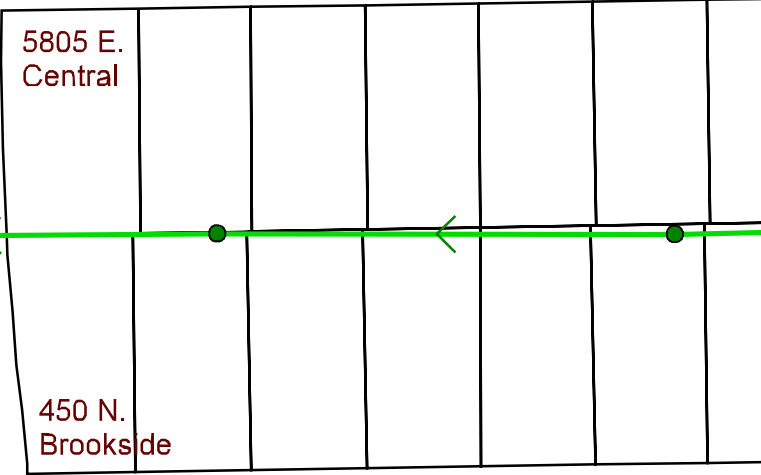
3-1

CENTRAL

MH # 5847-466
Approx depth = 13.2 ft

Point Repair:
Remove and replace 70 lf of 21" pipe, from
MH 5847-466 to 70 lf south of MH 5847-466.
(pipe is a "ribbed" PVC pipe)

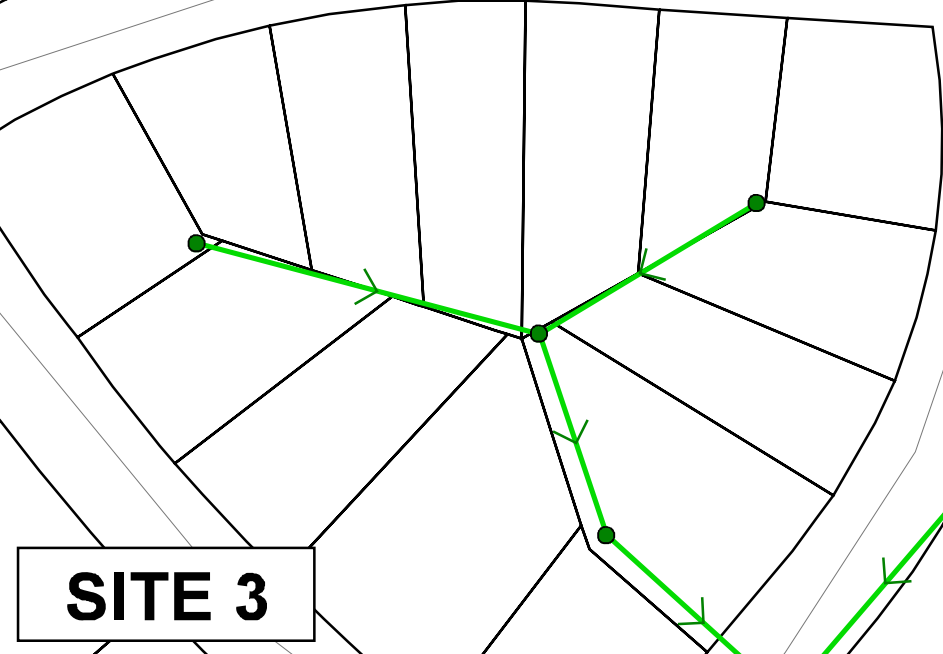
Per Park Dept., the tree that is located within this
point repair site is damaged. Contractor may
remove the tree.



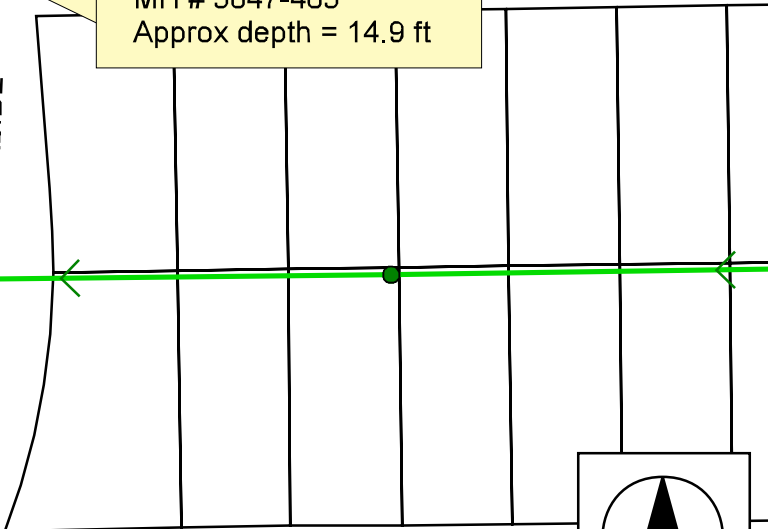
OAKWOOD

OAKWOOD

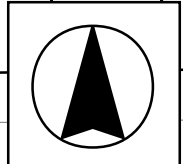
MH # 5847-465
Approx depth = 14.9 ft

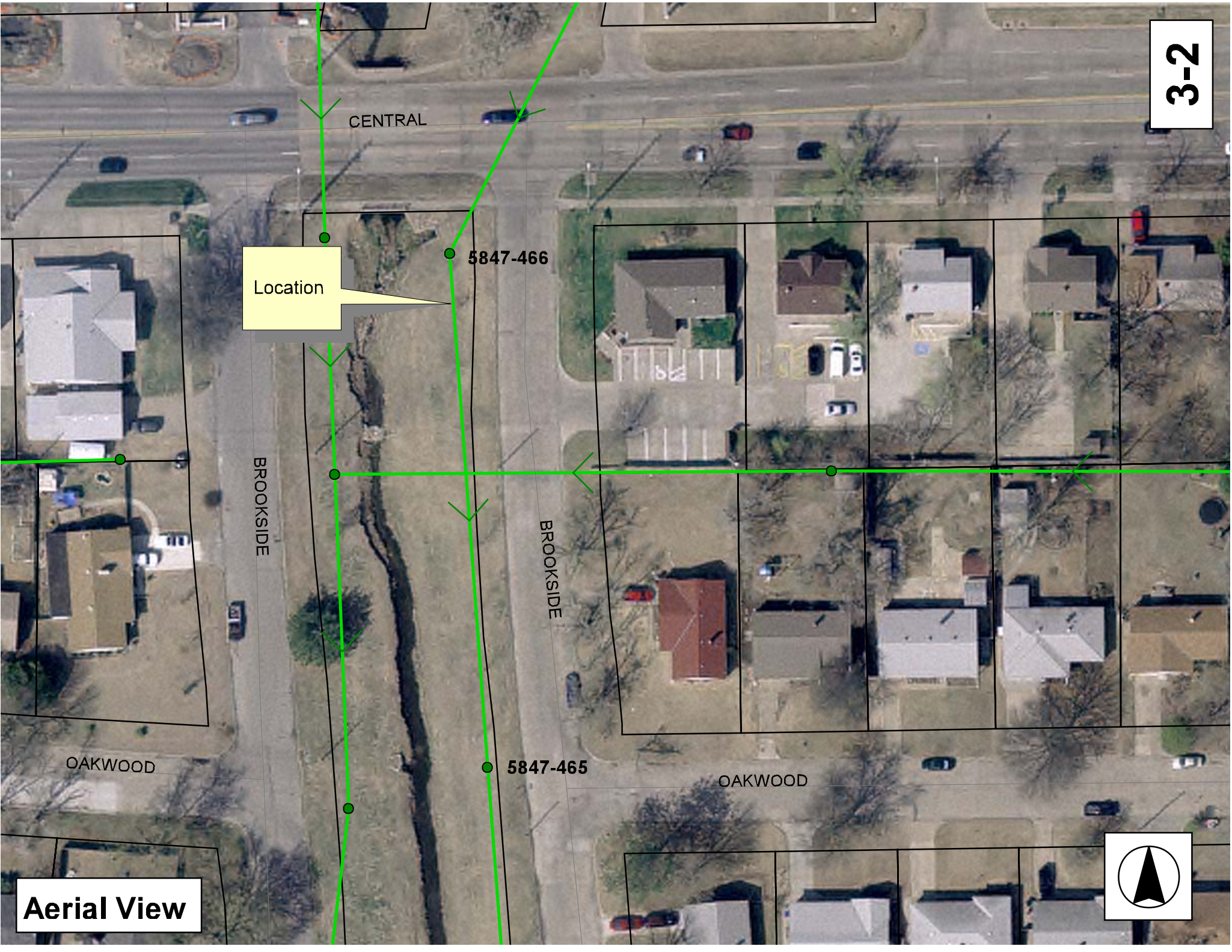


BROOKSIDE
Drainage Ditch
BROOKSIDE



SITE 3





Location

5847-466

5847-465

Aerial View

Television Inspection Master Report

9/10/2007
3:13:32PM

US Manhole: 5847-466 5805 E CENTRAL ST Date Insp: 7/26/2007 Basin: E04G
 DS Manhole: 5847-465 450 N BROOKSIDE PKWY Dir Televised: Upstream To Downstream

Pipe Information

Shape: Round Length Status: Project No.: P-014
 Dia/Ht Width: 21 Material: PVC Index: 632422
 Length: 255.0 Slope: 0.153 Surface:

Inspection Information

Crew: 692 Percent Full: Tape ID: DVD #0301
 Weather: Sunny Purpose: TV Existing Line Counter Start:

Obs. #	VTR Counter	Distance	Location	Description	Obs Rating	Obsrvd (gpm)	Est. (gpm)	Ratings Struct	Clean	Remain (gpm)
1	5847-466	0.0	US Manhole	5847-466	1		0.000	0	0	0.000
2		20.6	Start	Sag	2		0.000	2	0	0.000
3		68.5	End	Sag	2		0.000	2	0	0.000
4	5847-465	254.0	DS Manhole	5847-465	1		0.000	0	0	0.000

REVERSE SETUP:

US Manhole: 5847-466 5805 E CENTRAL ST Date Insp: 7/26/2007 Basin: E04G
 DS Manhole: 5847-465 450 N BROOKSIDE PKWY Dir Televised: Downstream To Upstream

Obs. #	VTR Counter	Distance	Location	Description	Obs Rating	Obsrvd (gpm)	Est. (gpm)	Ratings Struct	Clean	Remain (gpm)
1	5847-465	0.4	DS Manhole	5847-465	1		0.000	0	0	0.000
2		189.5		Other	3		0.000	0	0	0.000
				LINE STARTS GOING UP HILL						
3		216.3	Start	Sag	5		0.000	25	0	0.000
4		219.1		Debris	2		0.000	0	0	0.000
5		252.7	End	Sag	1		0.000	1	0	0.000
6	5847-466	254.3	US Manhole	5847-466	1		0.000	0	0	0.000

