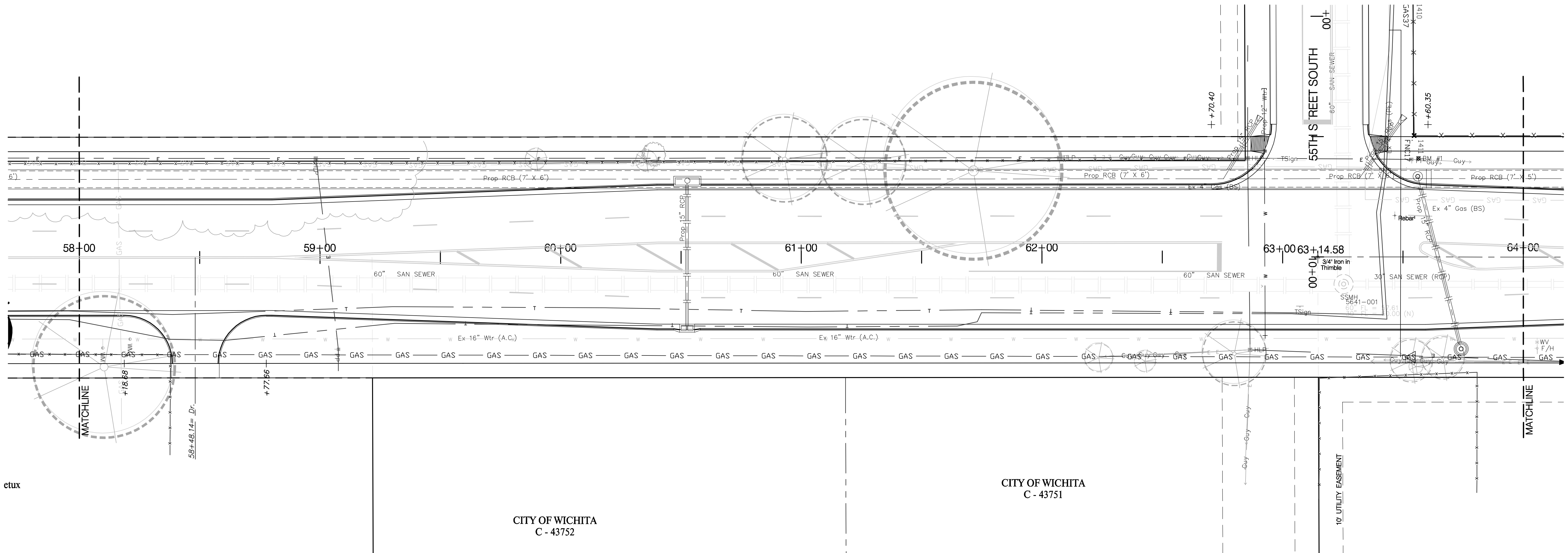
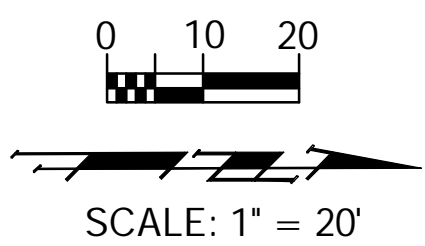


BENCHMARKS:

BM #8 - City of Wichita Bench Mark Disc Top of Hub Guard East
 Side of Hydraulic @ RCB (Riverside Drainage District Canal) 15.76'
 East of CenterLine of Hydraulic. Sta. 46+51.9, 15.7' Rt.
 Elev. = 77.73 (City Datum)



No Plantings on this Page Due
 to Numerous Utility Conflicts.

Call Before You Dig!
 1-800-DIG SAFE
 or 687-2470 in Wichita
 Call Kansas One-Call at Least Two (2)
 Working Days Before Work Begins

PROJECT NUMBER 472-84118a		SHEET NAME Phase2 LS		ENGINEERING DIRECTORY E:\Hydraulic LS\	
DESIGN BDT	DRAWN BDT	APPROVED BDT/PJM	DATE Mar 07	SCALE 1"=20'	BAUGHMAN NO 99-09-E451

STA 58+00 TO STA 64+00
LANDSCAPE PLAN - SEGMENT 2
 HYDRAULIC AVE PAVING - SOUTH OF 57th STREET SOUTH TO 47th STREET SOUTH

BAUGHMAN COMPANY, P.A.
 ENGINEERING, SURVEYING, & PLANNING
 316-262-7271 • 315 ELLIS • WICHITA, KANSAS 67211

SHEET
 13
 OF
 30