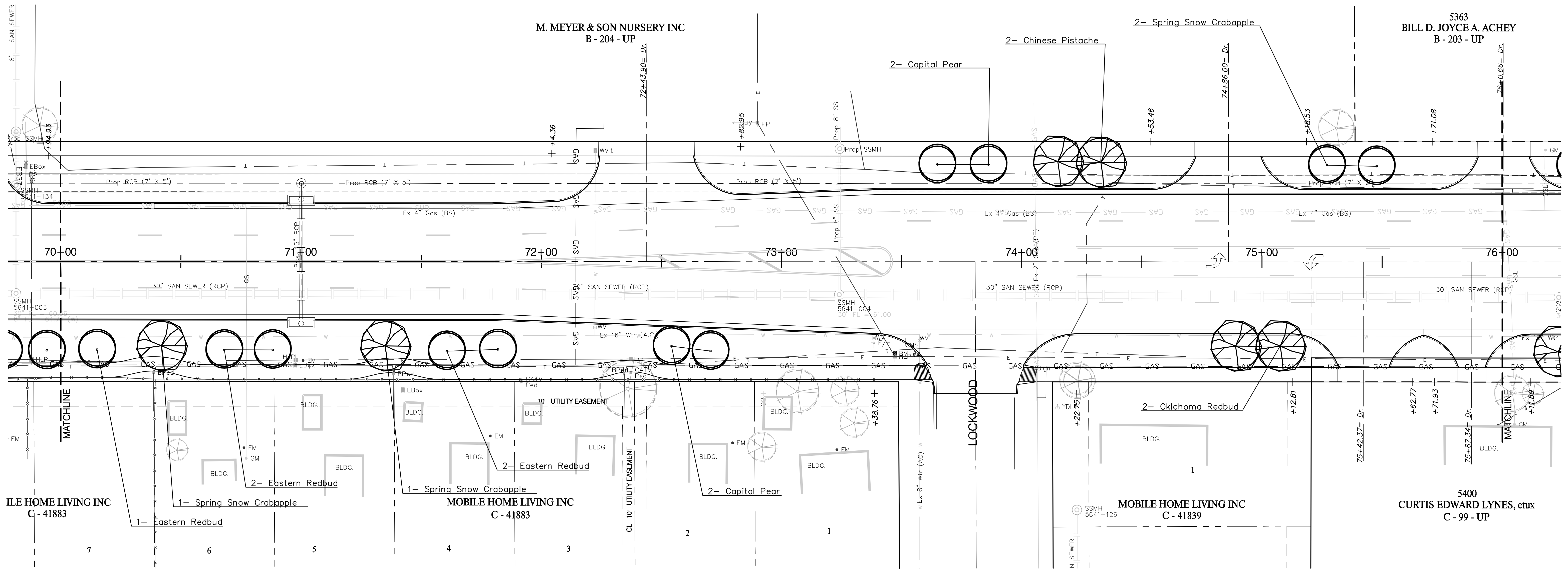
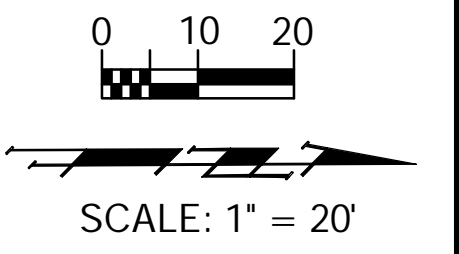


**BENCHMARKS:**

BM #8 - City of Wichita Bench Mark Disc Top of Hub Guard East Side of Hydraulic @ RCB (Riverside Drainage District Canal) 15.76' East of CenterLine of Hydraulic. Sta. 46+51.9, 15.7' Rt. Elev. = 77.73 (City Datum)



***PLANT SCHEDULE-This sheet only***

QTY	BOTANICAL NAME	COMMON NAME	SIZE	CONDITION	REMARKS
<b>ORNAMENTAL TREES</b>					
5	<i>Cercis canadensis</i>	Eastern Redbud	2" Cal.	B&B	Single Stem Only
2	<i>Cercis reniformis 'Oklahoma'</i>	Oklahoma Redbud	2" Cal.	B&B	Single Stem Only
4	<i>Malus 'Spring Snow'</i>	Spring Snow Crabapple	2" Cal.	B&B	Single Stem Only
2	<i>Pistacia chinensis</i>	Chinese Pistache	2" Cal.	B&B	Single Stem Only
4	<i>Pyrus calleryana 'Capital'</i>	Capital Pear	2" Cal.	B&B	Single Stem Only

Call Before You Dig  
1-800-DIG SAFE  
or 687-2470 In Wichita  
Call Kopper One-Call at Least Two (2) Working Days Before Work Begins

PROJECT NUMBER 472-84118a		SHEET NAME Phase 2 LS	ENGINEERING DIRECTORY E:\Hydraulic LS\	STA 70+00 TO STA 76+00	
DESIGN BDT	DRAWN BDT	APPROVED BDT/PJM	DATE Mar07	SCALE 1"=20'	BAUGHMAN NO 99-09-E451
<b>LANDSCAPE PLAN - SEGMENT 2</b>				<b>BAUGHMAN COMPANY, P.A.</b> ENGINEERING, SURVEYING, & PLANNING 316-262-7271 • 315 ELLIS • WICHITA, KANSAS 67211	
					SHEET 15 OF 30