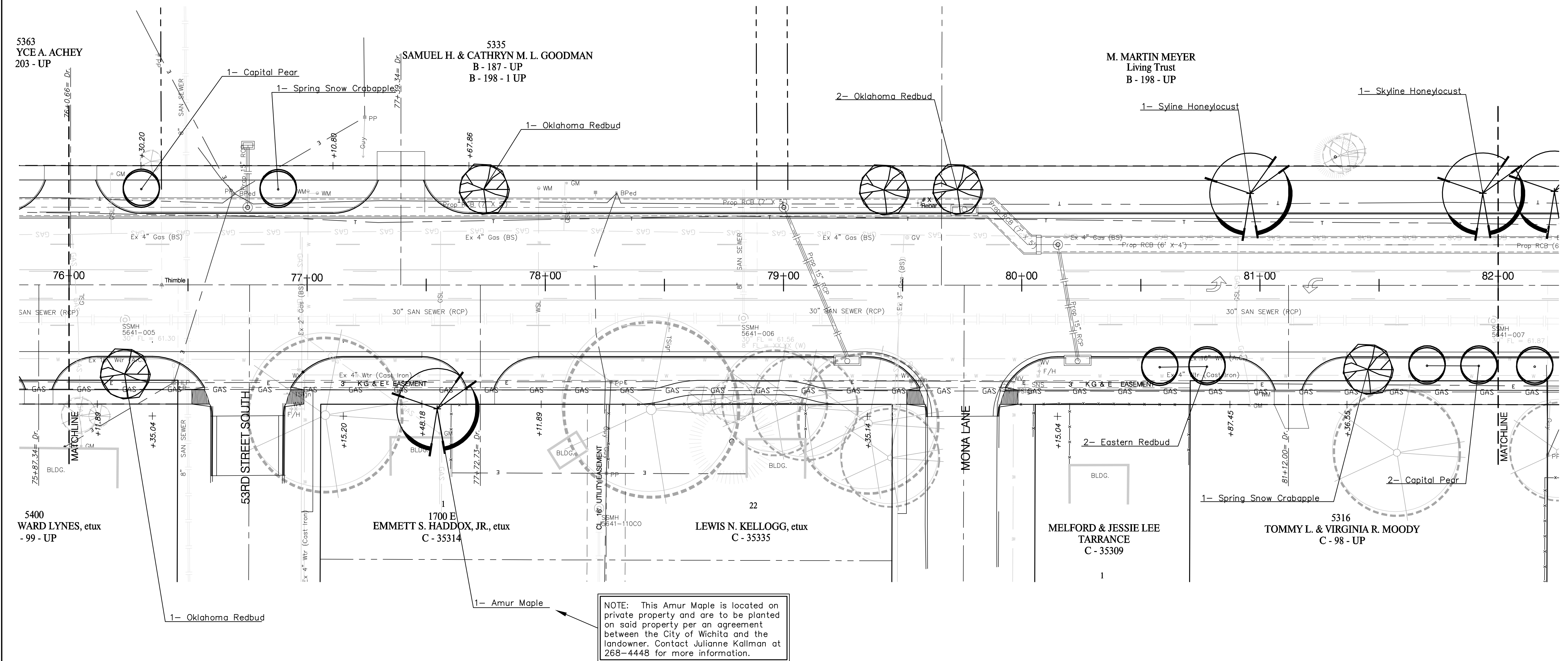
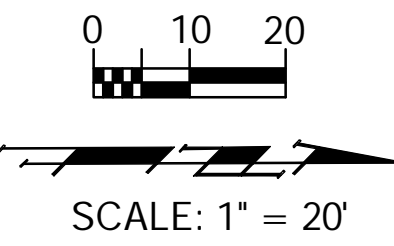


BENCHMARKS:

BM #8 - City of Wichita Bench Mark Disc Top of Hub Guard East Side of Hydraulic @ RCB (Riverside Drainage District Canal) 15.76' East of Centerline of Hydraulic. Sta. 46+51.9, 15.7' Rt. Elev. = 77.73 (City Datum)



PLANT SCHEDULE-This sheet only

QTY	BOTANICAL NAME	COMMON NAME	SIZE	CONDITION	REMARKS
LARGE SHADE TREES					
2	<i>Gleditsia triacanthos</i> 'Skyline'	Skyline Honeylocust	2" Cal.	B&B	Single Stem Only
ORNAMENTAL TREES					
1	<i>Acer ginnala</i>	Amur Flame Maple	2" Cal.	B&B	Single Stem Only
2	<i>Cercis canadensis</i>	Eastern Redbud	2" Cal.	B&B	Single Stem Only
4	<i>Cercis reniformis</i> 'Oklahoma'	Oklahoma Redbud	2" Cal.	B&B	Single Stem Only
2	<i>Malus</i> 'Spring Snow'	Spring Snow Crabapple	2" Cal.	B&B	Single Stem Only
3	<i>Pyrus calleryana</i> 'Capital'	Capital Pear	2" Cal.	B&B	Single Stem Only

CALL BEFORE YOU DIG!
 1-800-DIG SAFE
 or 887-2470 in Wichita
 Call Kansas One-Call at Least Two (2) Working Days Before Work Begins

PROJECT NUMBER 472-84118a		SHEET NAME Phase2 LS		ENGINEERING DIRECTORY E:\Hydraulic LS\		STA 76+00 TO STA 82+00		BAUGHMAN COMPANY, P.A. ENGINEERING, SURVEYING, & PLANNING 316-262-7271 • 315 ELLIS • WICHITA, KANSAS 67211	SHEET 16 OF 30
DESIGN BDT	DRAWN BDT	APPROVED BDT/PJM	DATE Mar 07	SCALE 1"=20'	BAUGHMAN NO 99-09-E451	LANDSCAPE PLAN - SEGMENT 2 HYDRAULIC AVE PAVING - SOUTH OF 57th STREET SOUTH TO 47th STREET SOUTH			