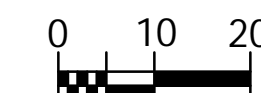


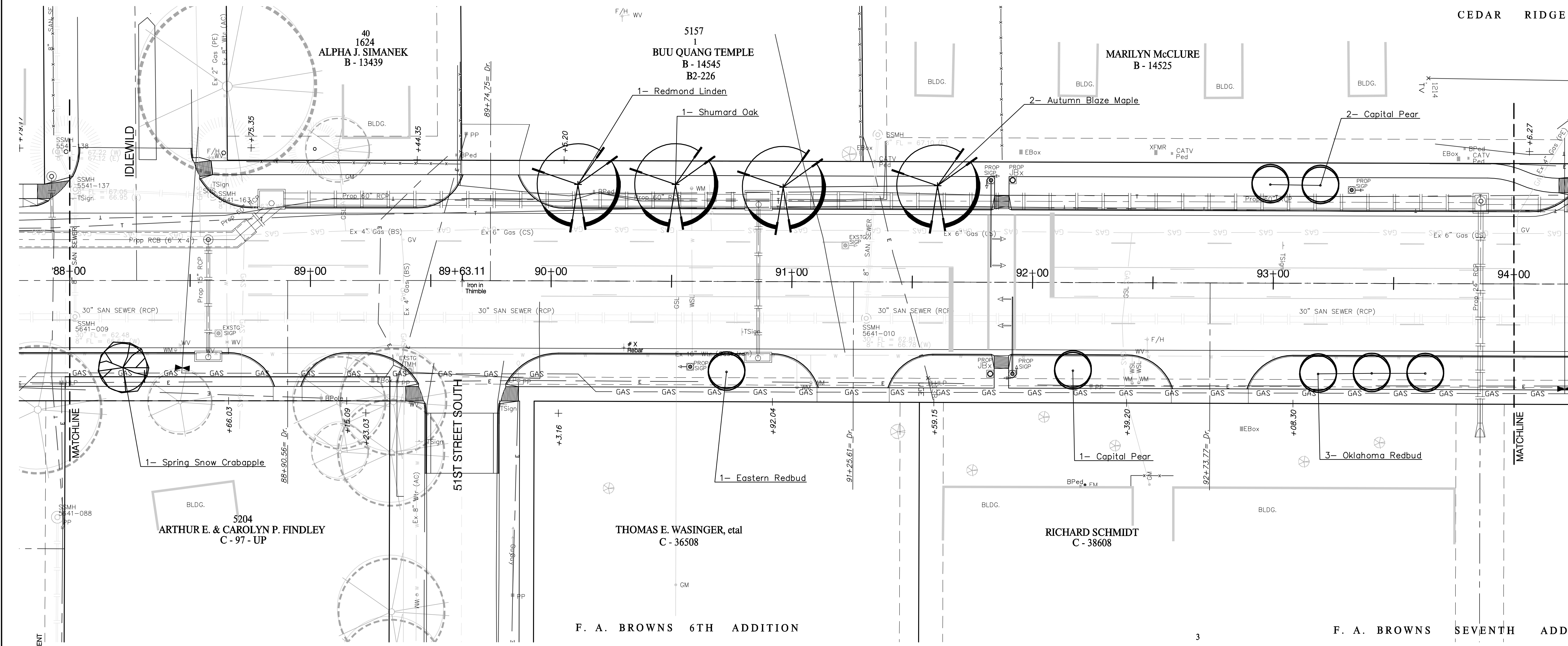
**BENCHMARKS:**

BM #8 - City of Wichita Bench Mark Disc Top of Hub Guard East Side of Hydraulic @ RCB (Riverside Drainage District Canal) 15.76' East of CenterLine of Hydraulic. Sta. 46+51.9, 15.7' Rt. Elev. = 77.73 (City Datum)



SCALE: 1" = 20'

CEDAR RIDGE



**PLANT SCHEDULE-This sheet only**

QTY	BOTANICAL NAME	COMMON NAME	SIZE	CONDITION	REMARKS
<b>LARGE SHADE TREES</b>					
2	<i>Acer x freemanii</i> 'Autumn Blaze'	Autumn Blaze Maple	2" Cal.	B&B	Single Stem Only
1	<i>Quercus shumardii</i>	Shumard Oak	2" Cal.	B&B	Single Stem Only
1	<i>Tilia americana</i> 'Redmond'	Redmond Linden	2" Cal.	B&B	Single Stem Only
<b>ORNAMENTAL TREES</b>					
1	<i>Cercis canadensis</i>	Eastern Redbud	2" Cal.	B&B	Single Stem Only
3	<i>Cercis reniformis</i> 'Oklahoma'	Oklahoma Redbud	2" Cal.	B&B	Single Stem Only
1	<i>Malus</i> 'Spring Snow'	Spring Snow Crabapple	2" Cal.	B&B	Single Stem Only
3	<i>Pyrus calleryana</i> 'Capital'	Capital Pear	2" Cal.	B&B	Single Stem Only

CALL BEFORE YOU DIG!  
1-800-DIG SAFE  
or 887-2470 in Wichita  
Call Kansas One-Call at Least Two (2) Working Days Before Work Begins

PROJECT NUMBER 472-84118a		SHEET NAME Phase2 LS		ENGINEERING DIRECTORY E:\Hydraulic LS\	
DESIGN BDT	DRAWN BDT	APPROVED BDT/PJM	DATE Mar 07	SCALE 1"=20'	BAUGHMAN NO 99-09-E451

STA 88+00 TO STA 94+00  
**LANDSCAPE PLAN - SEGMENT 2**  
HYDRAULIC AVE PAVING - SOUTH OF 57th STREET SOUTH TO 47th STREET SOUTH

**BAUGHMAN COMPANY, P.A.**  
ENGINEERING, SURVEYING, & PLANNING  
316-262-7271 • 315 ELLIS • WICHITA, KANSAS 67211

SHEET  
OF  
18  
30