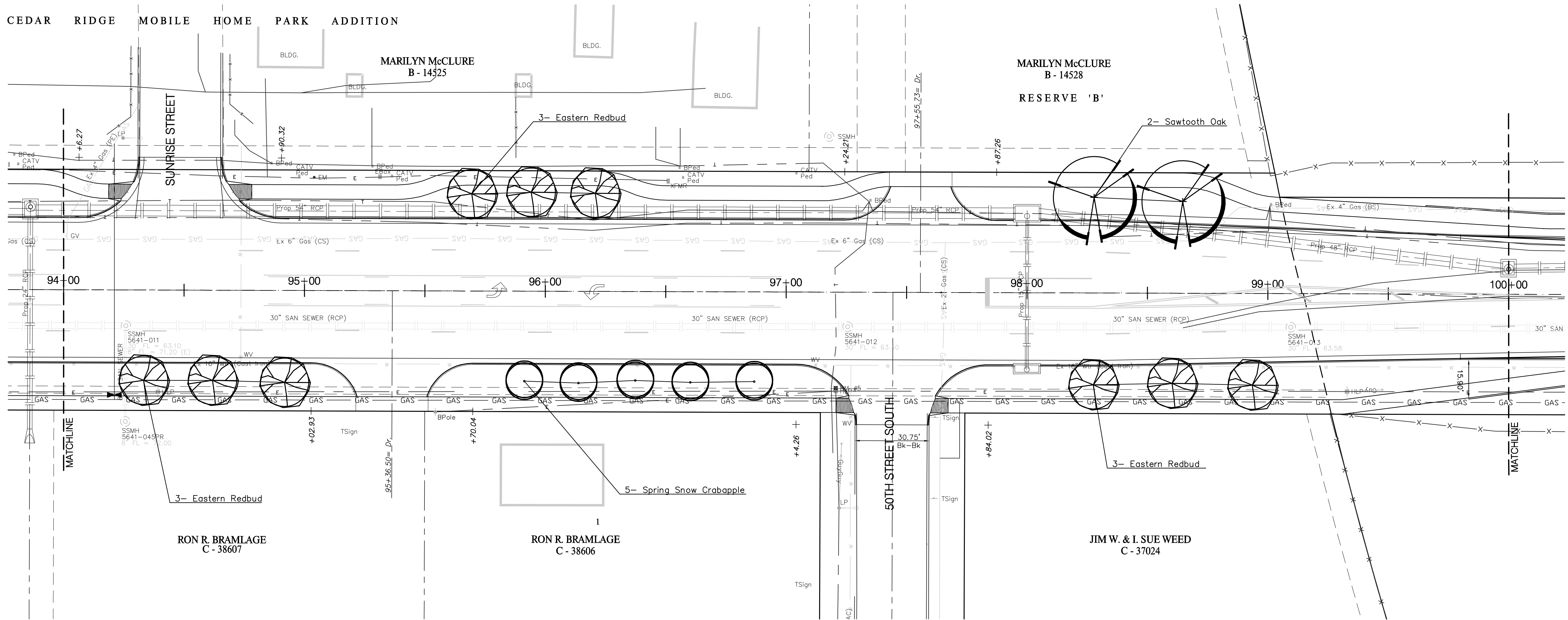
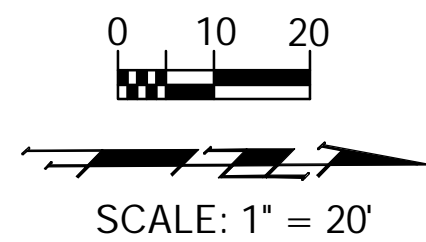


BENCHMARKS:

BM #B - City of Wichita Bench Mark Disc Top of Hub Guard East Side of Hydraulic @ RCB (Riverside Drainage District Canal) 15.76' East of CenterLine of Hydraulic. Sta. 46+51.9, 15.7' Rt. Elev. = 77.73 (City Datum)



PLANT SCHEDULE-This sheet only

QTY	BOTANICAL NAME	COMMON NAME	SIZE	CONDITION	REMARKS
LARGE SHADE TREES					
2	<i>Quercus acutissima</i>	Sawtooth Oak	2" Cal.	B&B	Single Stem Only
ORNAMENTAL TREES					
9	<i>Cercis canadensis</i>	Eastern Redbud	2" Cal.	B&B	Single Stem Only
5	<i>Malus 'Spring Snow'</i>	Spring Snow Crabapple	2" Cal.	B&B	Single Stem Only

Call Before You Dig
 1-800-DIG SAFE
 or 687-2470 in Wichita
 Call Kansas One-Call at Least Two (2) Working Days Before Work Begins

PROJECT NUMBER 472-84118a		SHEET NAME Phase 2 LS		ENGINEERING DIRECTORY E:Hydraulic LS	
DESIGN BDT	DRAWN BDT	APPROVED BDT/PJM	DATE Mar 07	SCALE 1"=20'	BAUGHMAN NO 99-09-E451

STA 94+00 TO STA 100+00
LANDSCAPE PLAN - SEGMENT 2
 HYDRAULIC AVE PAVING - SOUTH OF 57th STREET SOUTH TO 47th STREET SOUTH

BAUGHMAN COMPANY, P.A.	ENGINEERING, SURVEYING, & PLANNING
	316-262-7271 • 315 ELLIS • WICHITA, KANSAS 67211

SHEET 19
OF 30