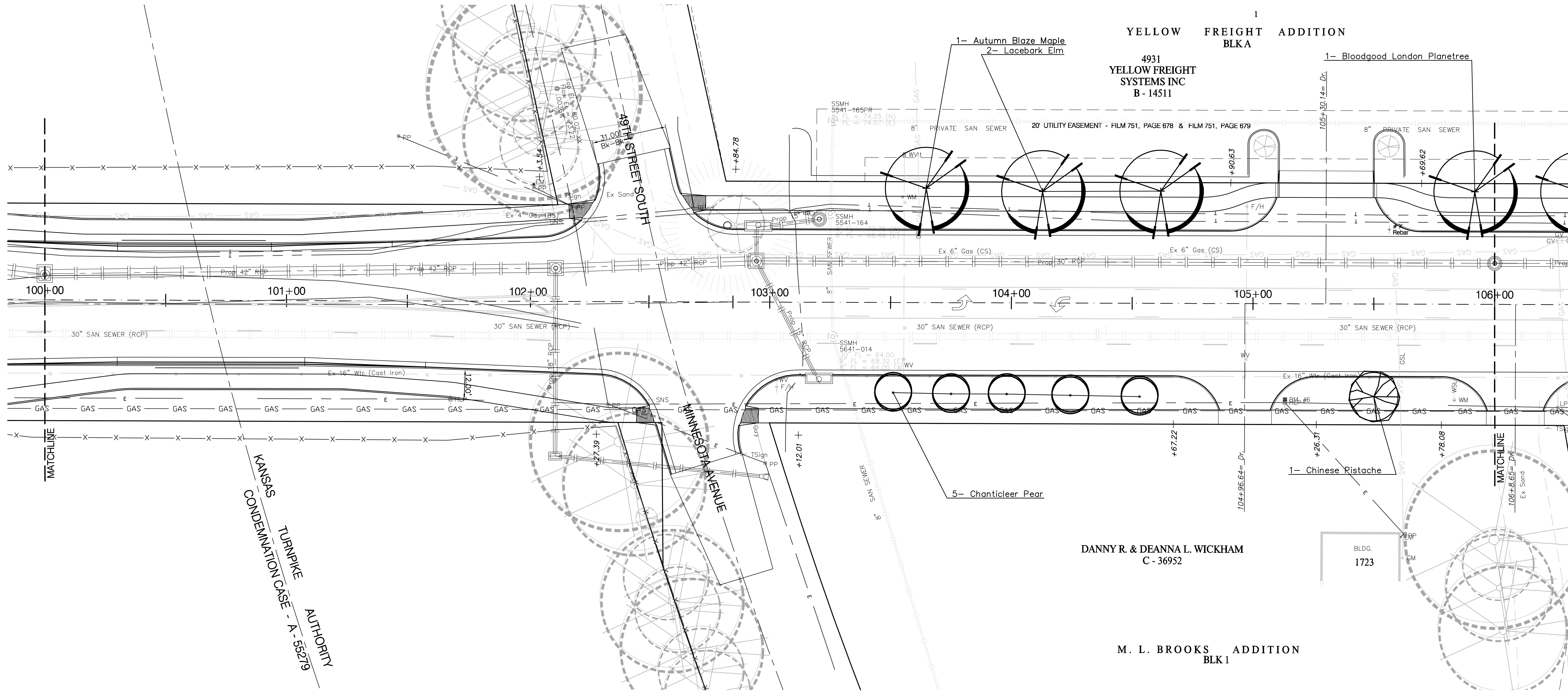
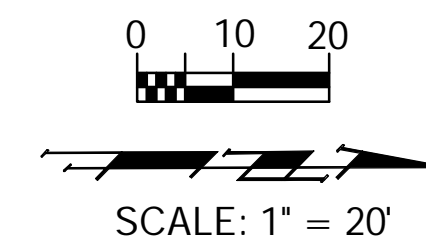


BENCHMARKS:

BM #8 - City of Wichita Bench Mark Disc Top of Hub Guard East Side of Hydraulic @ RCB (Riverside Drainage District Canal) 15.76' East of CenterLine of Hydraulic. Sta. 46+51.9, 15.7' Rt. Elev. = 77.73 (City Datum)



PLANT SCHEDULE-This sheet only

QTY	BOTANICAL NAME	COMMON NAME	SIZE	CONDITION	REMARKS
LARGE SHADE TREES					
1	<i>Acer x freemanii</i> 'Autumn Blaze'	Autumn Blaze Maple	2" Cal.	B&B	Single Stem Only
2	<i>Ulmus parvifolia</i>	Lacebark Elm	2" Cal.	B&B	Single Stem Only
1	<i>Platanus x acerfolia</i> 'Bloodgood'	Bloodgood London Planetree	2" Cal.	B&B	Single Stem Only
ORNAMENTAL TREES					
1	<i>Pistacia chinensis</i>	Chinese Pistache	2" Cal.	B&B	Single Stem Only
5	<i>Pyrus calleryana</i> 'Cleveland Select'	Chanticleer Pear	2" Cal.	B&B	Single Stem Only

PROJECT NUMBER 472-84118a		SHEET NAME Phase 2 LS		ENGINEERING DIRECTORY E:\Hydraulic LS\	
DESIGN BDT	DRAWN BDT	APPROVED BDT/PJM	DATE Mar 07	SCALE 1" = 20'	BAUGHMAN NO 99-09-E451

STA 100+00 TO STA 106+00
LANDSCAPE PLAN - SEGMENT 2
 HYDRAULIC AVE PAVING - SOUTH OF 57th STREET SOUTH TO 47th STREET SOUTH

BAUGHMAN COMPANY, P.A.
 ENGINEERING, SURVEYING, & PLANNING
 316-262-7271 • 315 ELLIS • WICHITA, KANSAS 67211

SHEET
OF
20
30

Call Before You Dig
 1-800-DIG SAFE
 or 687-2470 in Wichita
 Call Kansas One-Call at Least Two (2)
 Working Days Before Work Begins