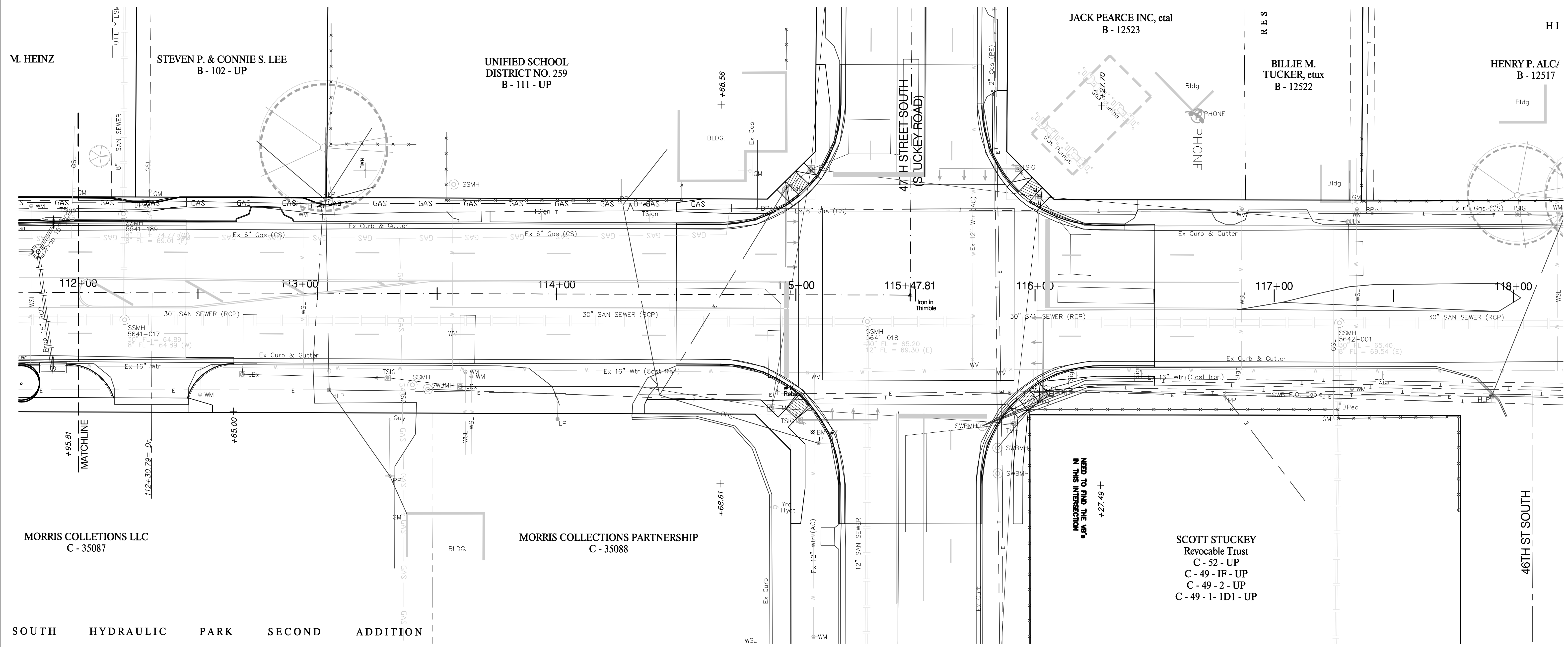


**BENCHMARKS:**

BM #8 - City of Wichita Bench Mark Disc Top of Hub Guard East Side of Hydraulic @ RCB (Riverside Drainage District Canal) 15.76' East of CenterLine of Hydraulic. Sta. 46+51.9, 15.7' Rt. Elev. = 77.73 (City Datum)



No Plantings on this Page Due to Numerous Utility Conflicts.

Call Before You Dig  
1-800-DIG SAFE  
or 687-2470 in Wichita  
Call Kansas One-Call at Least Two (2) Working Days Before Work Begins

PROJECT NUMBER 472-84118a		SHEET NAME Phase2 LS		ENGINEERING DIRECTORY E:\Hydraulic\LS\	
DESIGN BDT	DRAWN BDT	APPROVED BDT/PJM	DATE Mar 07	SCALE 1"=20'	BAUGHMAN NO 99-09-E451

STA 112+00 TO STA 117+00  
**LANDSCAPE PLAN - SEGMENT 2**  
HYDRAULIC AVE PAVING - SOUTH OF 57th STREET SOUTH TO 47th STREET SOUTH

**BAUGHMAN COMPANY, P.A.**  
ENGINEERING, SURVEYING, & PLANNING  
316-262-7271 \* 315 ELLIS \* WICHITA, KANSAS 67211

SHEET 22 OF 30