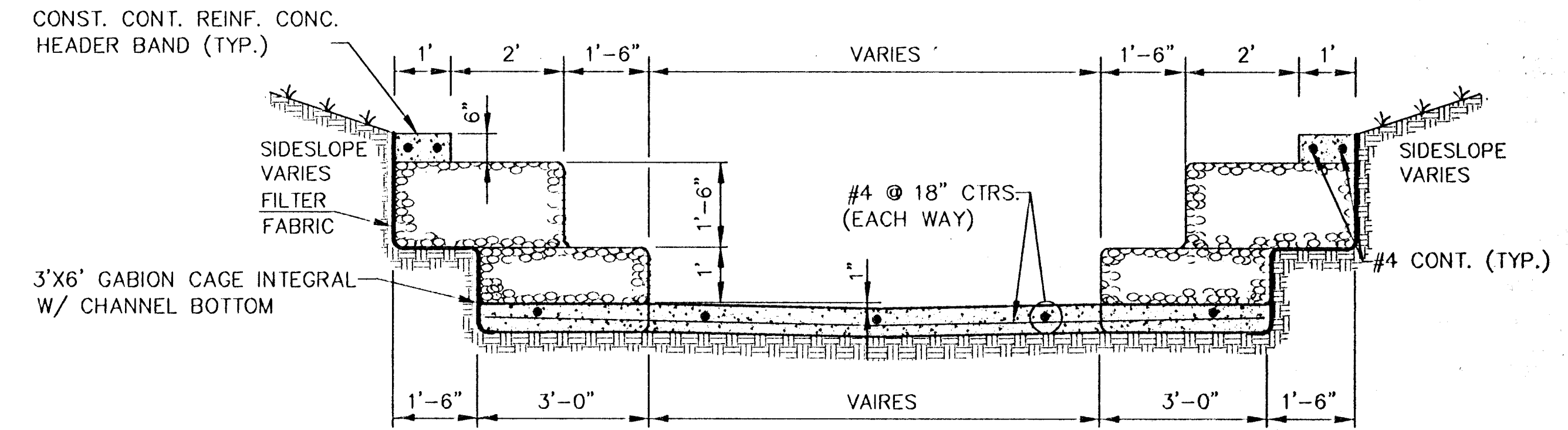
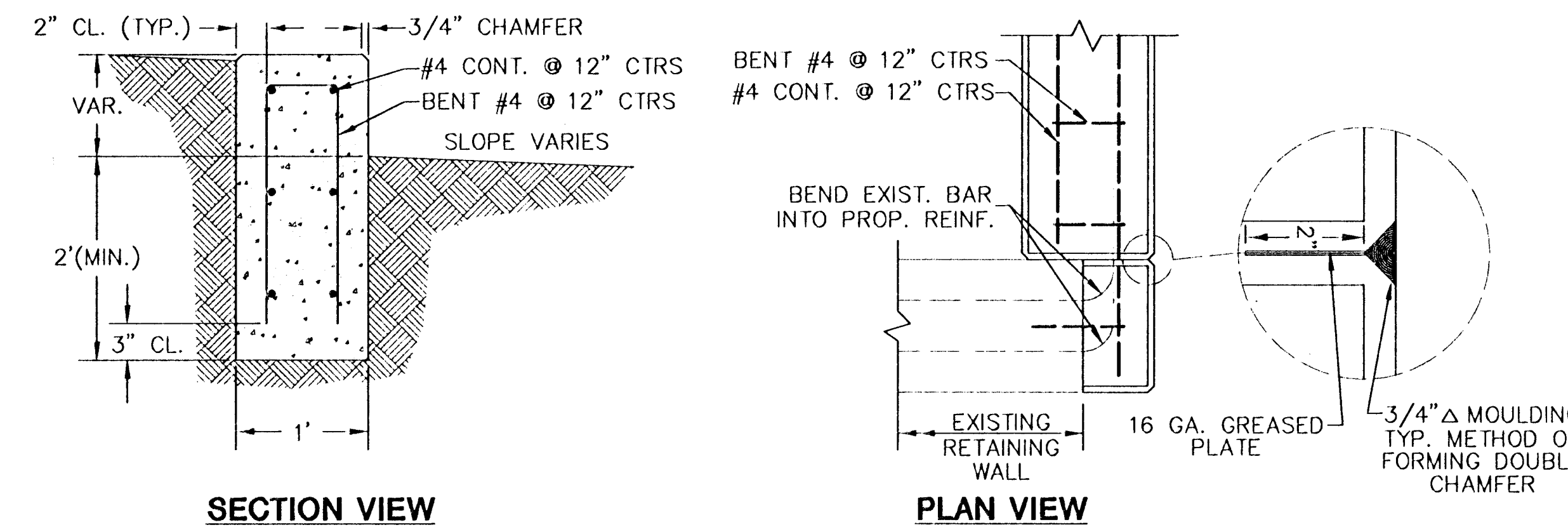


TYPICAL CHANNEL BOTTOM DETAIL



TYPICAL LINED PILOT CHANNEL

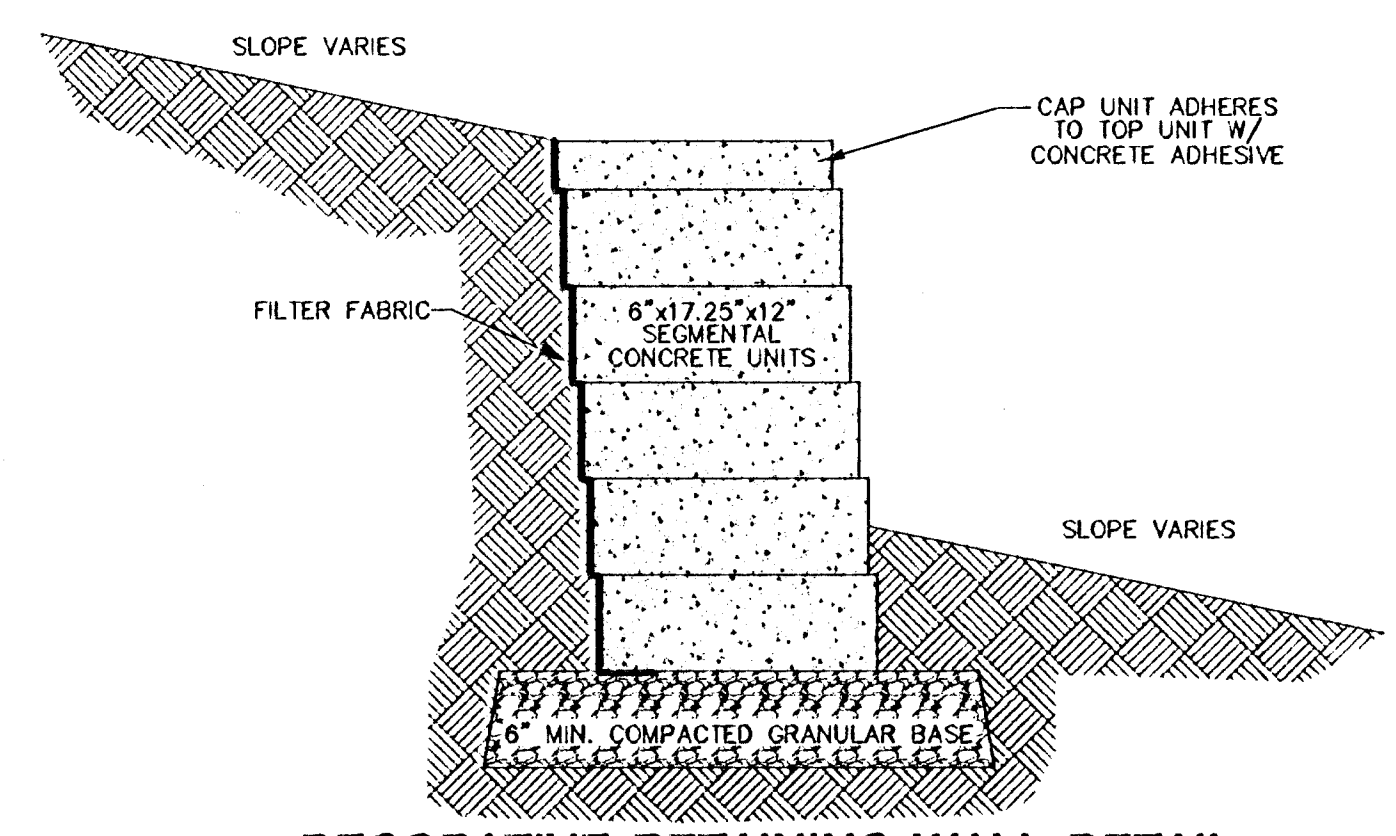


SECTION VIEW

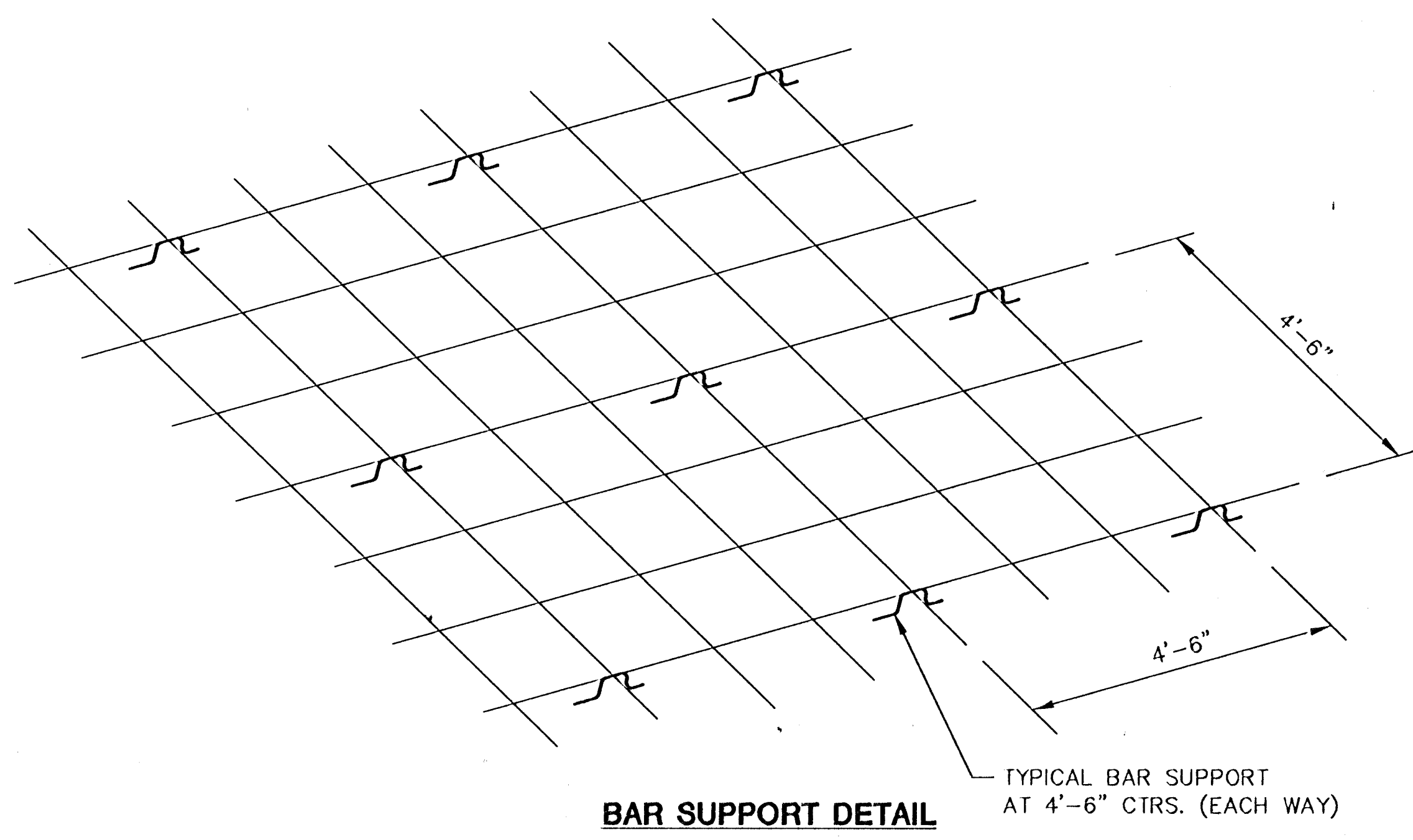
PLAN VIEW

NOTE: LOCATE CHAMFERED JOINT AS SHOWN AT EITHER END AND AT 30' (max.) INTERVALS ALONG WALL

TYPICAL RETAINING WALL DETAIL



DECORATIVE RETAINING WALL DETAIL



BAR SUPPORT DETAIL
TYPICAL BAR SUPPORT AT 4'-6" CTRS. (EACH WAY)

NOTES

1. ALL REINFORCING SHALL BE ASTM GRADE 60 EPOXY COATED. ALL LAPS SHALL BE MIN. 30 BAR DIAMETERS.
2. PROVIDE EPOXY COATED BAR SUPPORTS AT 4'-6" EACH WAY.
3. NO LONGITUDINAL JOINT WILL BE ALLOWED UNLESS APPROVED BY THE ENGINEER.
4. CONTRACTION JOINTS SHALL BE FORMED AT 100' INTERVALS. THE CONTRACTION JOINTS SHALL BE FORMED BY PLACING A METAL TEMPLATE HAVING A MINIMUM THICKNESS OF 1/8 INCH INTO THE CONCRETE FOR AT LEAST 1/3 OF THE DEPTH OF THE CONCRETE OR BY CUTTING ENTIRELY THROUGH THE FRESH CONCRETE WITH A TROWEL. THE EDGES OF CONTRACTION JOINTS SHALL BE ROUNDED WITH A 1/4 INCH RADIUS EDGING TOOL.

<p>MID-KANSAS ENGINEERING CONSULTANTS, INC. 411 N WEBB ROAD WICHITA, KS. 67206 316-684-9600</p>	<p>AREA "K" - 3RD STREET STORM WATER IMPROVEMENTS PROJECT NAME</p>	
	<p>CHANNEL DETAILS SHEET TITLE</p>	
	<p>DESIGN BY: <u>KJS</u></p>	<p>DRAWN BY: <u>DLM, DPG</u></p>
<p>DATE: <u>1-22-96</u></p>	<p>JOB NO.: <u>93031001</u></p>	<p>SHEET OF: <u>63 / 77</u></p>