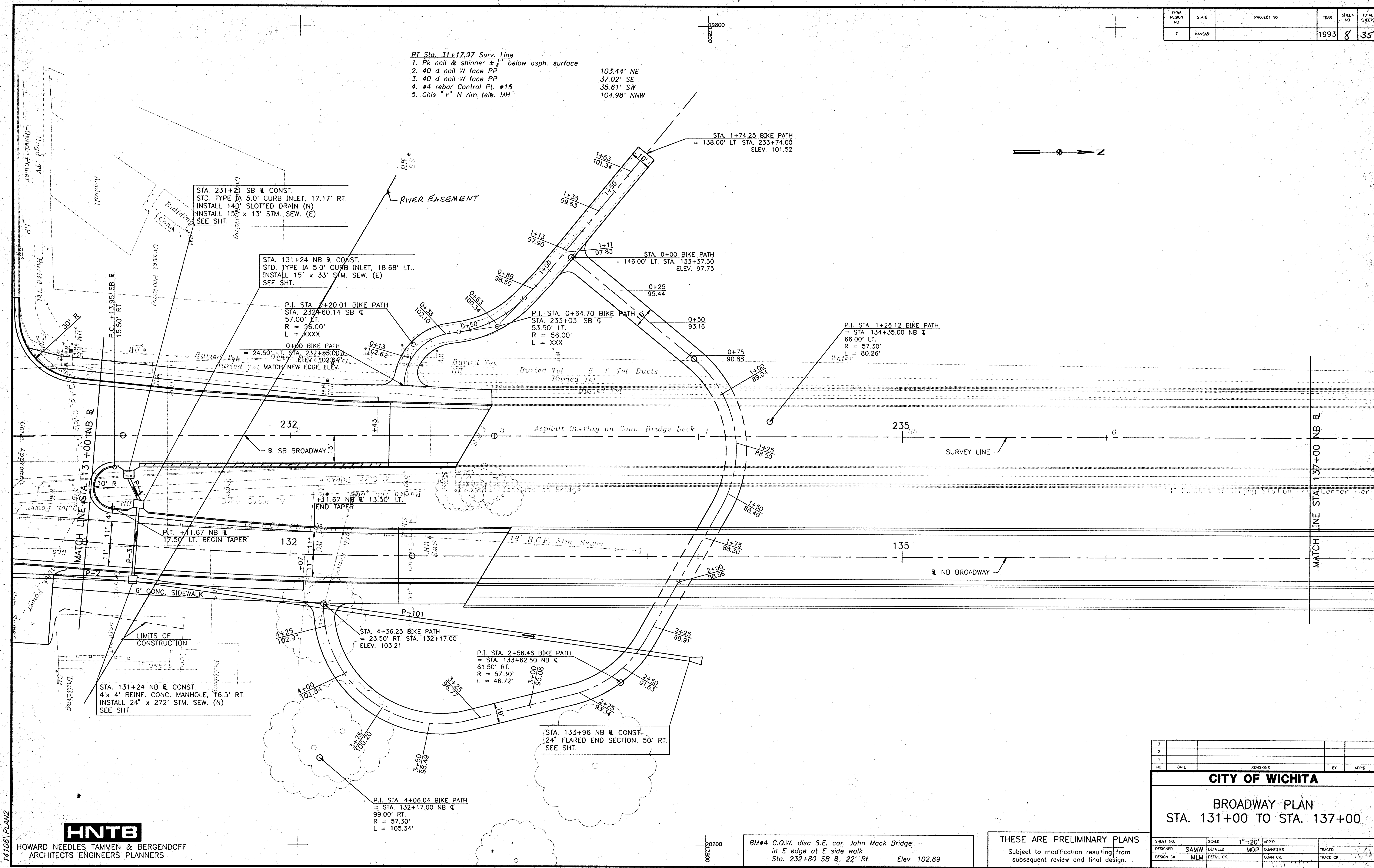


FEMA REGION NO	STATE	PROJECT NO	YEAR	SHEET NO	TOTAL SHEETS
7	KANSAS		1993	8	35

- PT Sta. 31+17.97 Surv. Line
1. Pk nail & shinner $\pm 1/2"$ below asph. surface
 2. 40 d nail W face PP
 3. 40 d nail W face PP
 4. #4 rebar Control Pt. #16
 5. Chis "+" N rim tel. MH
- 103.44' NE
37.02' SE
35.61' SW
104.98' NNW



HNTB
HOWARD NEEDLES TAMMEN & BERGENFELD
ARCHITECTS ENGINEERS PLANNERS

BM#4 C.O.W. disc S.E. cor. John Mack Bridge
in E edge at E side walk
Sta. 232+80 SB $\&$, 22' Rt. Elev. 102.89

THESE ARE PRELIMINARY PLANS
Subject to modification resulting from
subsequent review and final design.

3					
2					
1					
NO	DATE	REVISIONS	BY	APP'D	
CITY OF WICHITA					
BROADWAY PLAN					
STA. 131+00 TO STA. 137+00					
SHEET NO.	SCALE	1"=20'	APP'D.		
DESIGNED	SAMW	DETAILED	MDP	QUANTITIES	TRACED
DESIGN CR.	MLM	DETAIL CR.		QUAN CR.	TRACE CR.