

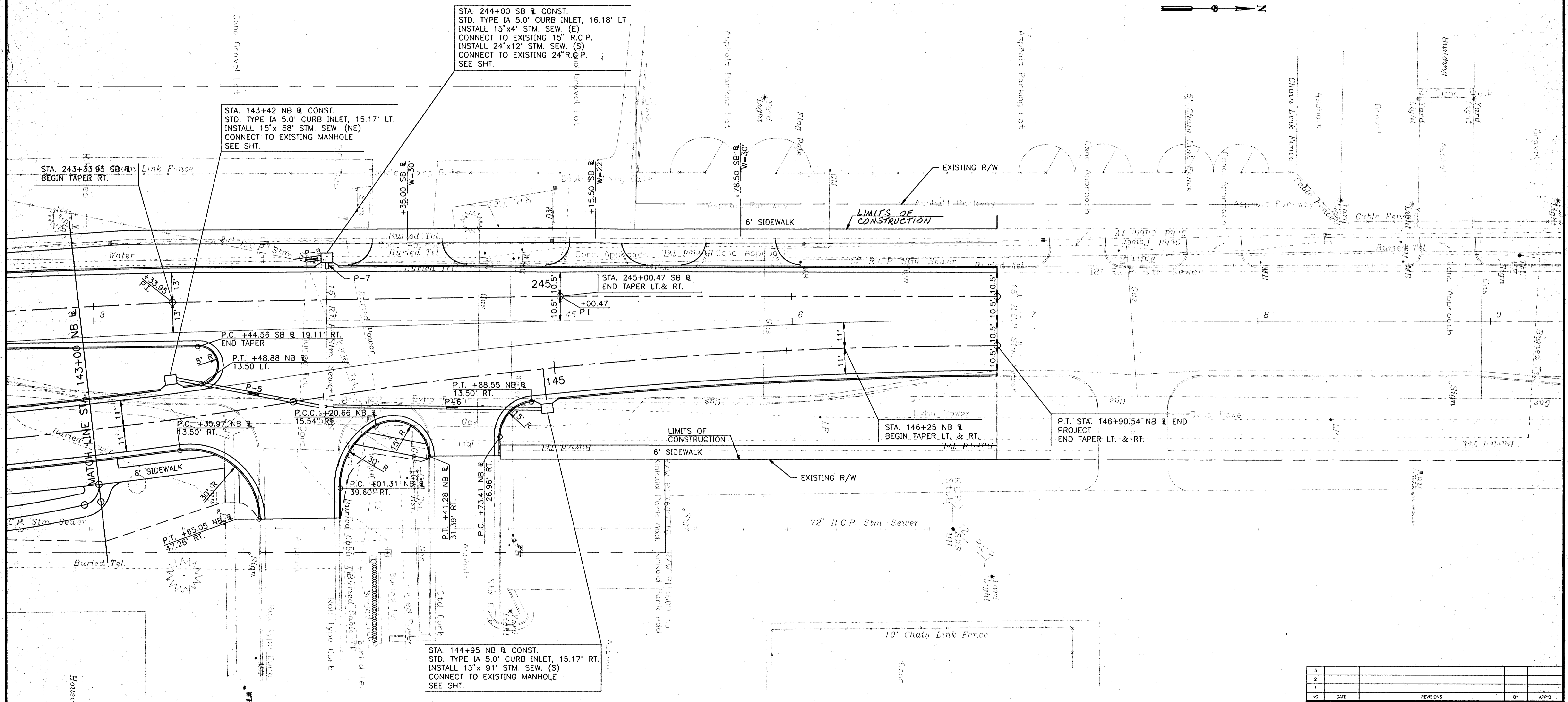
FYMA REGION NO.	STATE	PROJECT NO.	YEAR	SHEET NO.	TOTAL SHEETS
7	KANSAS		1993	12	35

**CURVE DATA
NB BROADWAY**
P.I. STA. 145+39.06 =
10.50' RT. STA. 45+35.88 SURV. LN.
 $\Delta = 9^{\circ} 06' 29.3''$ RT.
D = 3⁰⁰ 00.0"
R = 1909.86'
T = 152.12'
L = 303.60'
E = 6.05'
S.E. = R.C.

**CURVE DATA
SB BROADWAY**
P.I. STA. 243+33.95 =
8.00' LT. STA. 43+33.73 SURV. LN.
 $\Delta = 2^{\circ} 10' 42.0''$ LT.

**CURVE DATA
SB BROADWAY**
P.I. STA. 245+00.47 =
10.50' LT. STA. 45+00.24 SURV. LN.
 $\Delta = 0^{\circ} 51' 36.8''$ RT.

P.O.T. Sta. 51+00 Surv. Line
1. Chis. "+" in conc. 80.50' NW
2. Spk in NE face PP 92.54' N
3. Chis "O" SE cor BM #2 top curb S end conc. island
4. Chis "+" W side conc. base to light pole 63.56' E
5. Chis "+" NW cor. mall sign base 113.18' SE



HNTB
HOWARD NEEDLES TAMMEN & BERGENDOFF
ARCHITECTS ENGINEERS PLANNERS

20200
18000

BM#3 Set chis "O" W side top conc. base light pole in mall SW cor. parking lot just N of Marion Rd. Sta. 144+70 NB @ 100' Rt. Elev. 101.725

THESE ARE PRELIMINARY PLANS
Subject to modification resulting from subsequent review and final design.

3					
2					
1					
NO	DATE	REVISIONS	BY	APPD	
CITY OF WICHITA					
BROADWAY PLAN					
STA. 143+00 TO STA. 146+90.54					
SHEET NO.	SCALE	1"=20'	APPD.		
DESIGNED	SAMW	DETAILED	MDP	QUANTITIES	TRACED
DESIGN CK.	MLM	DETAIL CK.		QUAN CK.	TRACE CK.