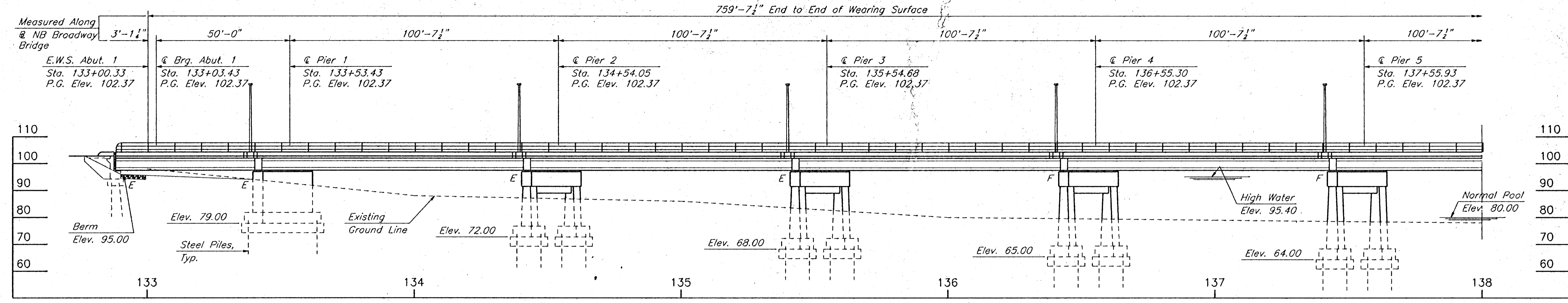
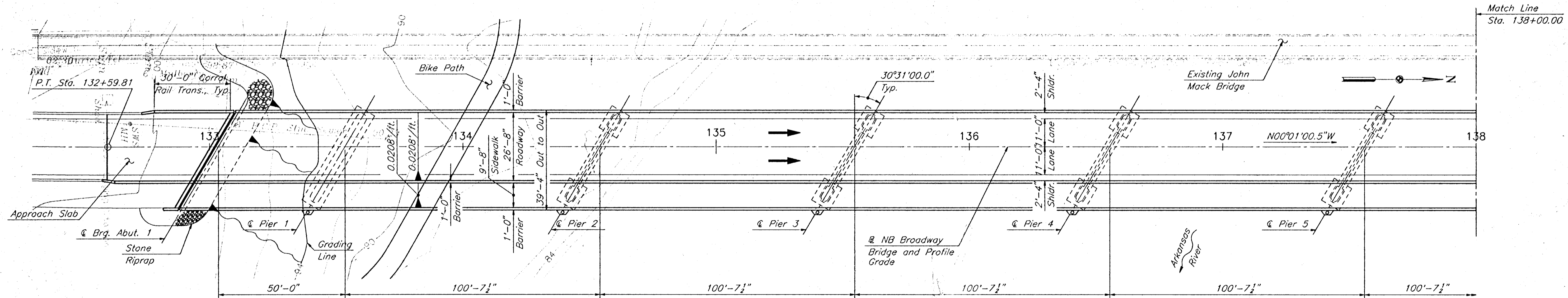


FWA REGION NO	STATE	PROJECT NO	YEAR	SHEET NO	TOTAL SHEETS
7	KANSAS		1993	27	35



**ELEVATION**  
Scale: 1"=20'

50'-100'-7 1/2"; 100'-7 1/2"; 100'-7 1/2"; 100'-7 1/2"; 100'-7 1/2";  
100'-7 1/2"; 99'-8"; Prestressed Concrete Beam Spans  
Pile Bent Abutments, Pedestal Type Piers  
26'-8" Roadway; 9'-8" Sidewalk; 30° 31' 00.0" Skew Rt.



**PLAN**  
Scale: 1"=20'

**HYDRAULIC DATA**

Drainage Area 40,490 Sq. Mi.  
Design Frequency 100-Yr.  
\* Design Discharge 26,000 CFS  
Average Design Velocity 3.9 FPS  
Design Highwater Elevation 1282.80 USGS (95.40 City)  
Design Backwater 0.0 FT  
Design Backwater Elevation 1283.10 USGS (95.70 City)  
Overtopping Elevation (Sta. 147+50.00) 1284.90 USGS (97.50 City)  
Overtopping Frequency > 500-Yr.  
Historic Highwater Elevation 1283.70 USGS (96.30 City)  
Total Waterway Area Provided 7541 Sq. Ft.  
Design Waterway Area Provided 6674 Sq. Ft.

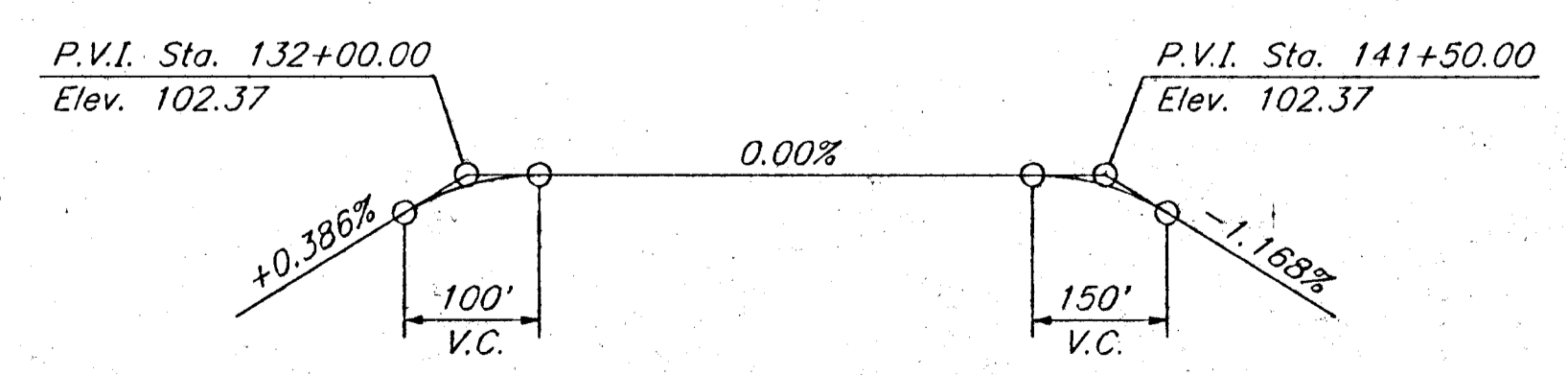
Notes:  
For General Notes and Typical Section, see Sheet 28.  
Design plan elevations are based on City datum.

**CURVE DATA NB BROADWAY**

P.I. STA. 131+79.53  
Δ = 4° 49' 10.6"  
D = 3° 00' 00.0"  
R = 1909.86'  
T = 80.37'  
L = 160.65'  
E = 1.69"  
S.E. = R.C.

**BENCH MARKS**

#3 Set chis "a" W side top conc. base light pole in small SW cor. parking lot just N of Marion Rd. Sta. 144+70 NB  $\Delta$ , 100' Rt. Elev. 101.725  
#4 C.O.W. disc S.E. cor. John Mack Bridge in E edge at E side walk Sta. 232+80 SB  $\Delta$ , 22' Rt. Elev. 102.89 = Elev. 1290.29 (USGS)



**PROFILE GRADE NB BROADWAY**  
No Scale

**THESE ARE PRELIMINARY PLANS**  
Subject to modification resulting from subsequent review and final design.

NO	DATE	REVISIONS	BY	APP'D
3	6-11-93	Hydraulic Data, Pier Fixity	FWG	WCC
2				
1				

**CITY OF WICHITA**  
BR. NO. 5304008700AR31 STA. 136+80.14  
**CONSTRUCTION LAYOUT**  
N.B. BROADWAY OVER THE ARKANSAS RIVER

SHEET NO.	SCALE	AS SHOWN	APP'D.
DESIGNED	DETAILS	FWG	QUANTITIES
DESIGN CK.	DETAIL CK.	WCC	QUAN CK.
			TRACE CK.

K:\B14106\P4\_06/11/93 09:13

**HNTB**  
HOWARD NEEDLES TAMMEN & BERGENDOFF  
ARCHITECTS ENGINEERS PLANNERS