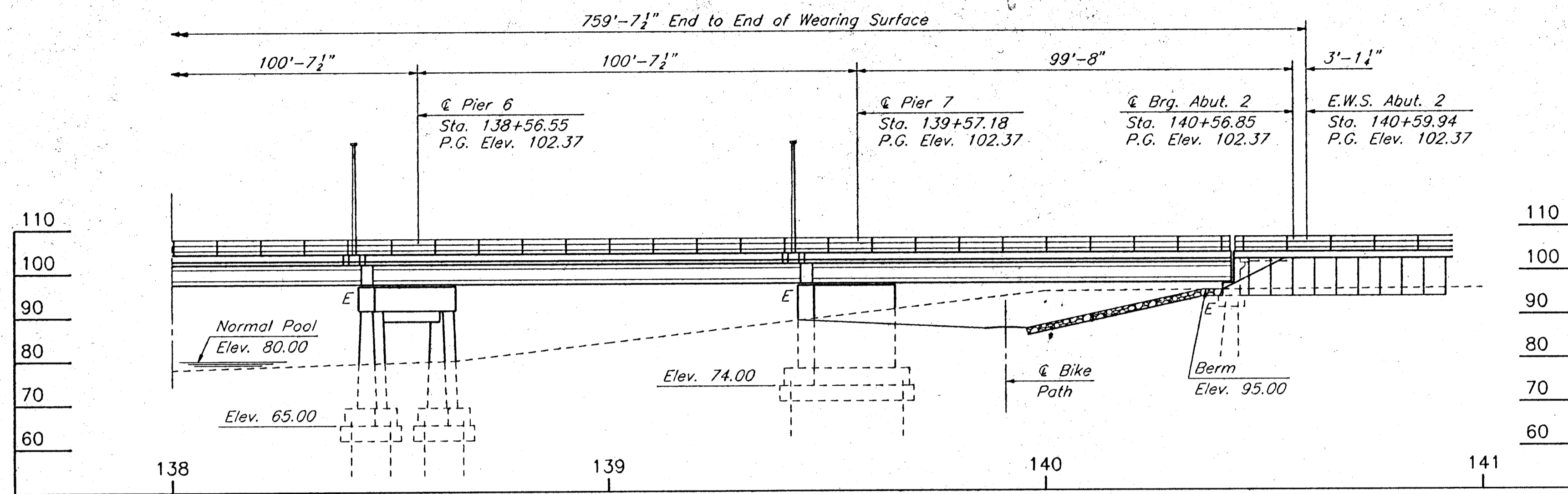
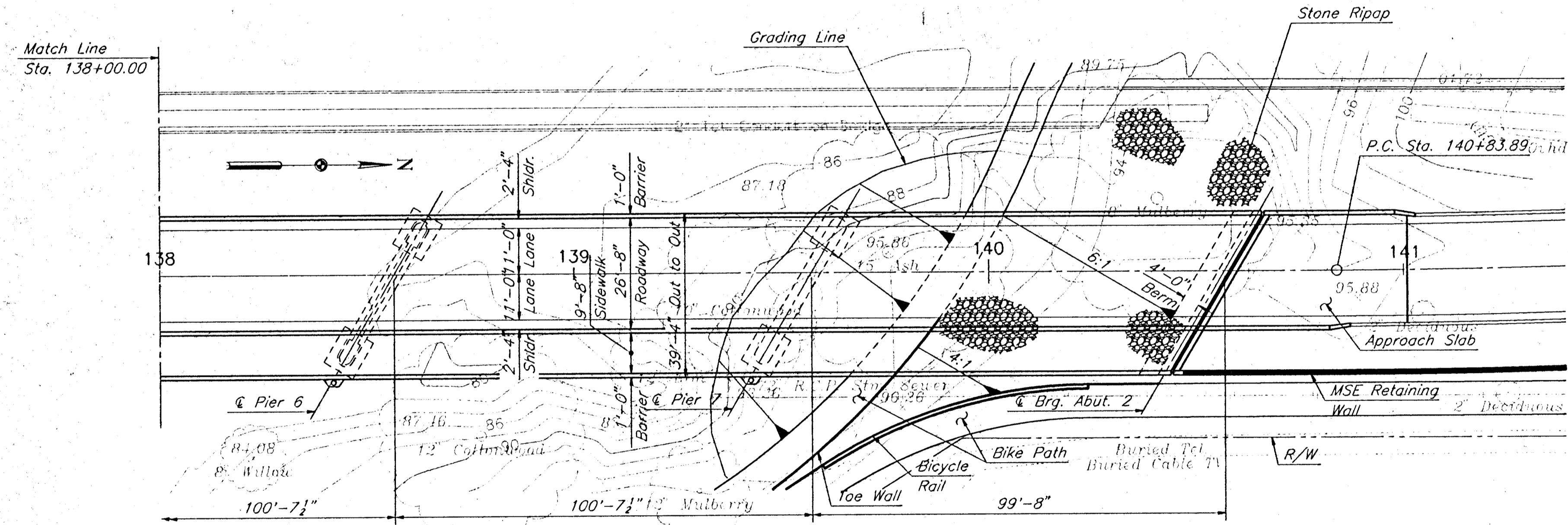


FHWA REGION NO.	STATE	PROJECT NO.	YEAR	SHEET NO.	TOTAL SHEETS
7	KANSAS		1993	28	35



ELEVATION
Scale: 1"=20'

50'; 100'-7 1/2"; 100'-7 1/2"; 100'-7 1/2"; 100'-7 1/2"; 100'-7 1/2";
100'-7 1/2"; 99'-8"; Prestressed Concrete Beam Spans
Pile Bent Abutments, Pedestal Type Piers
26'-8" Roadway; 9'-8" Sidewalk, 30° 31' 00.0" Skew Rt.

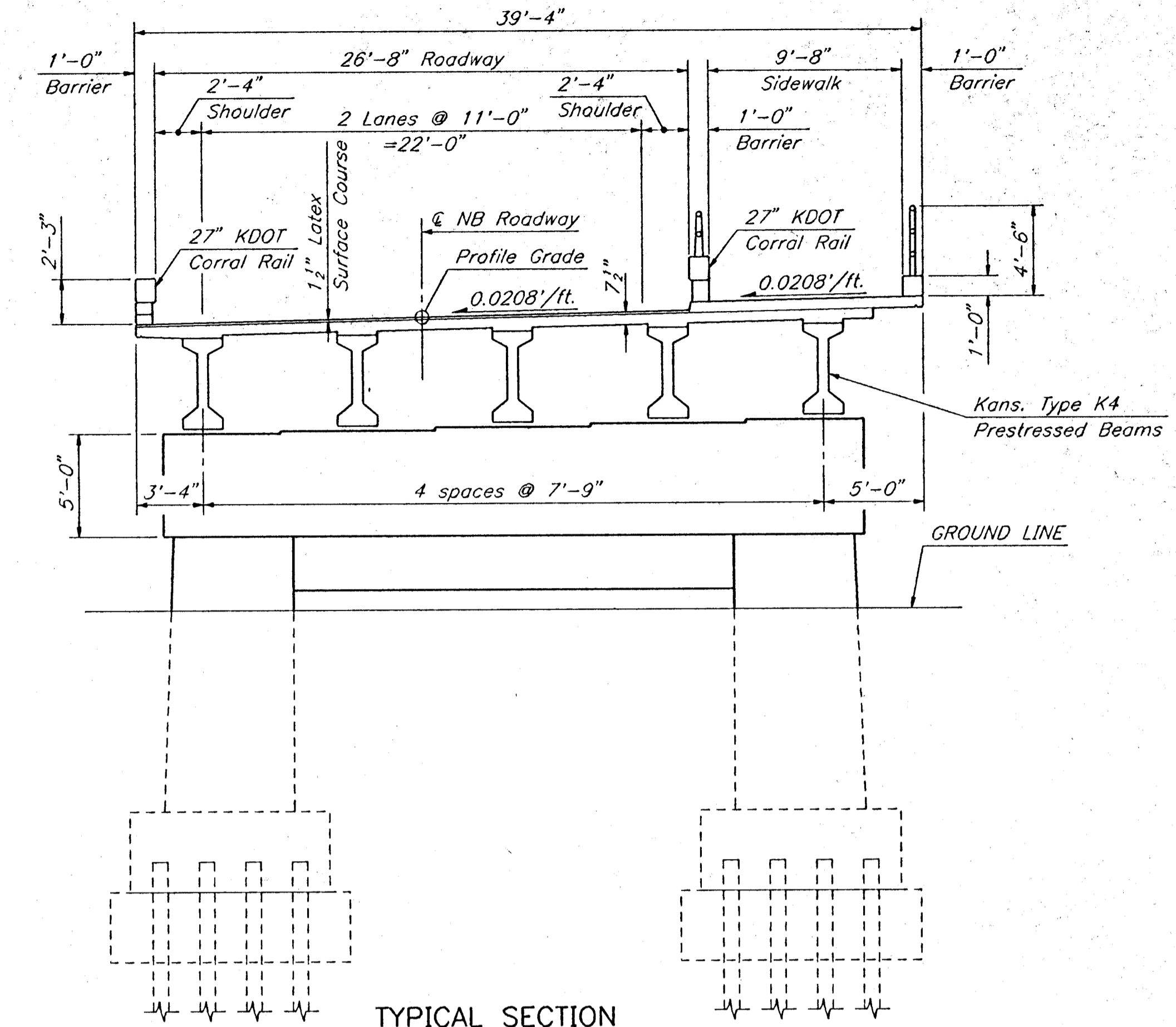


PLAN
Scale: 1"=20'

CURVE DATA
NB BROADWAY

P.I. STA. 142+35.73

Δ = 9° 05' 28.8"
D = 3° 00' 00.0"
R = 1909.86'
T = 151.84'
L = 303.04'
E = 6.03'
S.E. = R.C.



TYPICAL SECTION
Scale: 1/8"=1'-0"

GENERAL NOTES

DESIGN SPECIFICATIONS:

AASHTO Standard Specifications for Highway Bridges, 1992 Edition.

DESIGN LOADING:

Live Load - HS20 - 44
Dead Load - Includes an allowance of 15 lbs. per square foot for a future wearing surface.
Other Loads - As specified by AASHTO.

DESIGN STRESSES:

Class AAA (AE) Concrete Superstructure f'c = 4,000 psi.
f'c = 1,200 psi (slab)
Class AAA (AE) Concrete Substructure f'c = 4,000 psi.
Class AAA Concrete Substructure f'c = 4,000 psi.
Reinforcing Steel (Grade 60) f'y = 60,000 psi.
Prestressed Concrete f'c = 6,000 psi.
Prestressing Reinforcement Low relax., 7-wire strand (Grade 270).

DECK PROTECTIVE SYSTEM:

All reinforcing steel in the deck slab, barrier rails and abutment backwalls shall be epoxy-coated. Minimum concrete cover to top reinforcing in the deck slab shall be 2-1/2 inches. A 1-1/2 inch latex surface course shall be placed on the deck between gutterlines and from end to end of wearing surface on the roadway.

Notes:
For Hydraulic Data, Profile Grade, and Bench Mark information, see Sheet 27.

THESE ARE PRELIMINARY PLANS
Subject to modification resulting from subsequent review and final design.

3	6-11-93	Hydraulic Data, Ber. Fixity	FWG	WCC
2				
1				
NO.	DATE	REVISIONS	BY	APPD.

CITY OF WICHITA
BR. NO. 5304008700AR31 STA. 136+80.14

CONSTRUCTION LAYOUT

N.B. BROADWAY OVER THE ARKANSAS RIVER

SHEET NO.	SCALE	As Shown	APPD.
DESIGNED	DETAILED	FWG	QUANTITIES
DESIGN CK.	DETAIL CK.	WCC	QUAN CK.
			TRACED
			TRACE CK.

K:\B14106\P5 - 06/11/93 09:18

HNTB
HOWARD NEEDLES TAMMEN & BERGDOFF
ARCHITECTS ENGINEERS PLANNERS