

GENERAL NOTES

- UNLESS SHOWN OR STATED OTHERWISE ON THESE DRAWINGS, MATERIALS AND CONSTRUCTION SHALL BE IN ACCORDANCE WITH CITY OF WICHITA STANDARD SPECIFICATIONS.
- CONTRACTOR WILL BE REQUIRED TO PROVIDE A MINIMUM ADVANCE NOTICE OF SEVENTY-TWO (72) HOURS TO UTILITY COMPANIES PRIOR TO STARTING ANY EXCAVATION AS FOLLOWS:
 KANSAS ONE-CALL 1-800-344-7233 or 687-2470 (LOCAL WICHITA)
 THE CONTRACTOR MUST NOTIFY THE FOLLOWING IN CASE OF AN EMERGENCY:
 SBC (TELEPHONE) 800-870-8390
 COX COMMUNICATIONS (CABLE) 262-0661
 KANSAS GAS SERVICE (GAS) 832-3101
 CITY OF WICHITA WATER & SEWER 262-6000
 WESTAR (ELECTRIC) 383-9600
 AQUILA (GAS) 800-303-0357
- THE CONTRACTOR SHALL BE RESPONSIBLE FOR PRESERVING PROPERTY IRONS. THE CONTRACTOR WILL BE REQUIRED TO RE-ESTABLISH ANY PROPERTY IRONS WHICH ARE DAMAGED OR DESTROYED BY HIS CONSTRUCTION OPERATIONS. SUCH IRONS SHALL BE RE-ESTABLISHED BY A LICENSED LAND SURVEYOR IN ACCORDANCE WITH STATE LAWS.
- EXISTING UTILITIES AND THEIR LOCATIONS, AS SHOWN ON THE PLANS REPRESENT THE BEST INFORMATION OBTAINABLE FOR DESIGN. LOCATION INFORMATION HAS BEEN OBTAINED FROM THE VARIOUS UTILITY COMPANIES AND IS EITHER FROM COMPANY RECORD DRAWINGS OR COMPANY PROVIDED FIELD LOCATIONS. THE PLAN LOCATIONS SHOWN ARE NOT GUARANTEED. ADDITIONAL EXISTING UTILITIES MAY ALSO BE ENCOUNTERED.
- RUBBLE FROM THE REMOVAL OF MISCELLANEOUS STRUCTURES AND EXCESS EXCAVATION WHICH IS TO BE WASTED SHALL BE DISPOSED OF ON SITES TO BE PROVIDED BY THE CONTRACTOR. THESE SITES SHALL BE APPROVED BY THE ENGINEER AS TO SUITABILITY, APPEARANCE AND SITE LOCATION. LOCATIONS THAT, IN THE OPINION OF THE ENGINEER, WILL LEAVE AN UNSIGHTLY APPEARANCE WILL NOT BE APPROVED. ALL DISPOSAL SITES MUST BE APPROVED BY THE KANSAS DEPARTMENT OF HEALTH AND ENVIRONMENT. MATERIAL EITHER STOCKPILED OR DISPOSED OF IN A FLOOD PLAIN WOULD REQUIRE A KANSAS STATE BOARD OF AGRICULTURE PERMIT. ANY MATERIAL DUMPED IN WATERS OF THE UNITED STATES OR WETLANDS IS SUBJECT TO U.S. CORPS OF ENGINEERS PERMITTING REGULATIONS. ANY MATERIAL BURIED OR STOCKPILED BEYOND APPROVED CONSTRUCTION LIMITS WOULD REQUIRE ADDITIONAL ARCHAEOLOGICAL INVESTIGATIONS UNLESS BURIED IN A PREVIOUSLY APPROVED BORROW LOCATION.
- COST OF EXCAVATION, HAULING, AND DUMPING OF EXCESS EXCAVATION SHALL BE SUBSIDIARY TO THE PROJECT.
- A PORTION OF EXCESS EXCAVATED MATERIAL SHALL BE MOUND AROUND MANHOLES WHICH EXTEND MORE THAN ONE (1) FOOT ABOVE THE EXISTING GROUND. SUCH MOUNDS SHALL BE CONSTRUCTED WITH A SIX (6) FOOT DIAMETER FLAT TOP WITH 4 TO 1 SIDE SLOPES DOWN TO THE ORIGINAL GROUND. THE ELEVATION OF THE FLAT TOP OF THE MOUND SHALL BE 0.4 FOOT ABOVE THE TOP OF THE MANHOLE.
- ALL STUBS AND PLUGGED PIPES SHALL BE LOCATED WITH GREEN PLASTIC TAPE IN THE SAME MANNER AS RISERS.
- CONNECTING TO EXISTING MANHOLES: PRIOR TO LAYING SEWER LINES USING EXISTING STUBS IN EXISTING MANHOLES, THE CONTRACTOR SHALL EXPOSE AND VERIFY THE ELEVATION, GRADE AND ALIGNMENT OF EXISTING STUBS AND NOTIFY THE ENGINEER OF ANY DEVIATION FROM THE PLAN. WHERE CONNECTION TO AN EXISTING MANHOLE THAT DOES NOT HAVE AN EXISTING STUB OR THE STUB IS UNUSABLE DUE TO ELEVATION GRADE OR ALIGNMENT, THE CONTRACTOR SHALL BORE CUT INTO EXISTING MANHOLE WALL TO MAKE CONNECTION USING APPROVED WATER STOP GASKET, AND RESHAPE THE EXISTING MANHOLE INVERT TO PROVIDE SMOOTH FLOW. THE COST OF CONNECTING TO EXISTING MANHOLES IS INCIDENTAL TO THE PROJECT.
- TREES AND SHRUBS IN PUBLIC RIGHT-OF-WAY WHICH ARE IN DIRECT CONFLICT WITH PROPOSED NEW CONSTRUCTION SHALL BE REMOVED BY THE CONTRACTOR WITH THE ENGINEER'S APPROVAL. TREES AND SHRUBS WHICH ARE NOT IN DIRECT CONFLICT WITH PROPOSED NEW CONSTRUCTION SHALL BE SAVED AND PROTECTED FROM DAMAGE.
- ALL DISTURBED AREAS TO BE SEEDED WITH RYE GRASS AT A RATE OF 200 LBS. PER ACRE WITHIN 10 DAYS OF CONSTRUCTION. CONTRACTOR TO PREPARE GROUND PER CITY SPECIFICATIONS. COST IS SUBSIDIARY TO SITE PREPARATION AND RESTORATION.

NOTE TO CONTRACTOR

INSPECTION AND TESTING FOR THIS PROJECT IS TO BE PROVIDED BY A LICENSED CONSULTING ENGINEERING FIRM UNDER CONTRACT WITH THE OWNER/DEVELOPER. SAID INSPECTION TO BE IN ACCORDANCE WITH THE CITY OF WICHITA STANDARD CONSTRUCTION ENGINEERING PRACTICES AND CERTIFIED BY A LICENSED PROFESSIONAL ENGINEER. NO WORK SHALL BE PERFORMED IN DEDICATED EASEMENTS OR THE PUBLIC RIGHT-OF-WAY BY THE CONTRACTOR WITHOUT SUCH INSPECTION NOR SHALL ANY WORK BE COMMENCED IN DEDICATED EASEMENTS OR PUBLIC RIGHT-OF-WAY WITHOUT WRITTEN AUTHORIZATION BY THE CITY ENGINEER.

NW COR. SEC. 10
T27S, RTW OF 6TH P.M.

SANITARY SEWERS

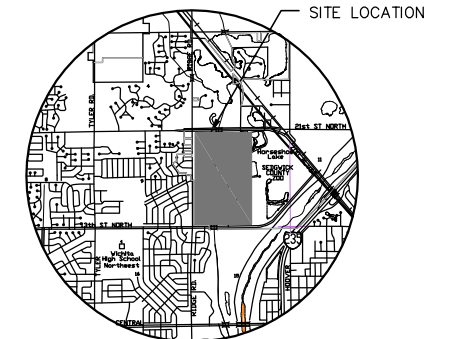
AS-BUILT PLANS
 CONTRACTOR: MCCOLLUGH EXCAVATION
 INSPECTOR: RAY GRIFFIN, MKEC
 PDF BY: SMB, JBS 10-16-07
 Released 10/22/07
 JDL 10/24/07

PRIVATE SANITARY SEWER PLANS

SEDGWICK COUNTY ZOO 2ND ADDITION

**LOTS 1 & 2, BLK A
 1631PPS (607861)**

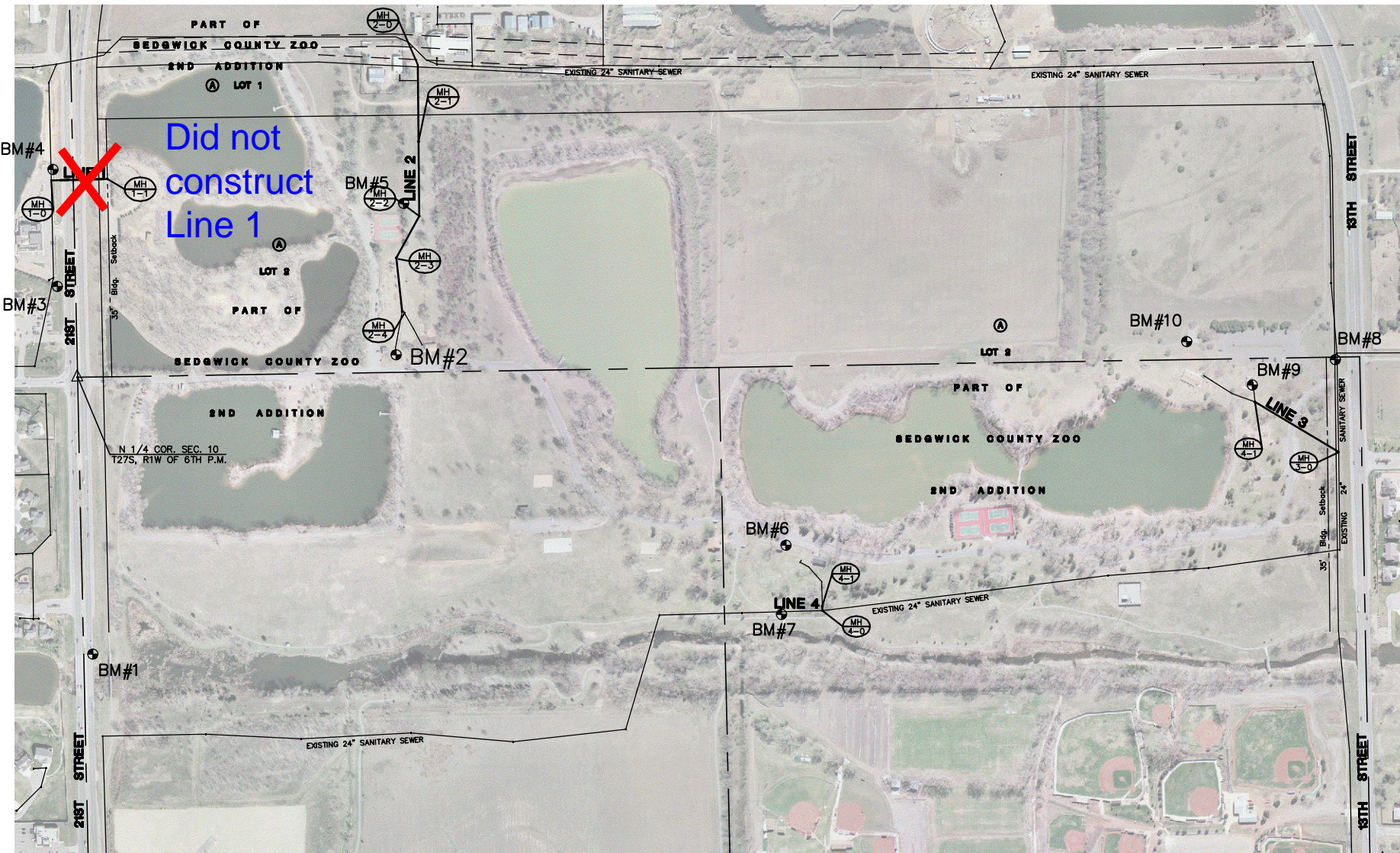
**CITY OF WICHITA, KANSAS
 JAMES L. ARMOUR, CITY ENGINEER**



LOCATION MAP

BENCHMARKS

- BM#1 City of Wichita benchmark disc in East end of South hub guard of bridge over Big Slough Creek, 1500'± east of Ridge Road, 1135' West of North Quarter Corner of Section 10, T27S, R 1 W. Elev.=1325.43
- BM#2 Chiseled square on Southwest corner of concrete pad underneath propane tank between restroom building and shelter building on Southeast corner of North Shore Boulevard and Horseshoe Lake Drive, 50'± South of restroom building. Elev.=1319.42
- BM#3 Railroad spike in North face of power pole at the Southwest corner of parking lot for Players Sports Bar and Grill, 6200 W. 21st Street North. Elev.=1320.59
- BM#4 Chiseled square on top of curb at Southeast corner of parking lot for Players Sports Bar and Grill, 6200 W. 21st Street North. Elev.=1319.25
- BM#5 Chiseled square on the Westerly corner of concrete pad for drinking water fountain 35'± East-Southeast of the Southeast corner of tennis courts, 650'± East of center of North Shore Boulevard, 200'± Southeast of center of Horse Shoe Lake Drive, 1350'± South of center of 21st Street North. Elev.=1318.58
- BM#6 Chiseled square on Northwest corner of concrete base of a sign, 10'± South of Southeast corner of restroom building, 280'± South of store building, 50'± West of center of North Shore Boulevard, 2400'± North of center of 13th Street North. Elev.=1317.33
- BM#7 Chiseled square on concrete pad for a drinking water fountain, 250'± West of restroom building, 75'± East of covered footbridge, 2400'± North of center of 13th Street North. Elev.=1318.87
- BM#8 City of Wichita benchmark disc 99 feet North and 12 feet West of the South Quarter corner of Section 10, T 27 S, R 1 W, 83' East of the center of North Shore Boulevard, 83' North of centerline 13th Street North. Elev.=1314.78
- BM#9 Railroad spike in light pole at Southwest corner of restroom building, 426' North of center of intersection of 13th Street North and North Shore Boulevard. 209'± South-Southwest of Southwest corner of Sunflower shelter building. Elev.=1316.78
- BM#10 Chiseled square on the Northwest corner of basketball court, 115'± East of the Northeast corner of the Sunflower shelter building. Elev.=1317.08



INDEX TO DRAWINGS

SHEET NO.	DESCRIPTION
1	TITLE SHEET
2-3	DETAILS
4-6	PLAN & PROFILES
7-9	PLAT



SCALE: 1"=300'



PRIVATE SANITARY SEWER TO SEDGWICK COUNTY ZOO 2ND ADD.

TITLE SHEET

SHEET TITLE		
MKEC DESIGN BY:	MKEC DRAWN BY:	JTC CHECKED BY:
FEBRUARY 2006 DATE	05138 JOB NO.	1 / 9 SHEET/OF

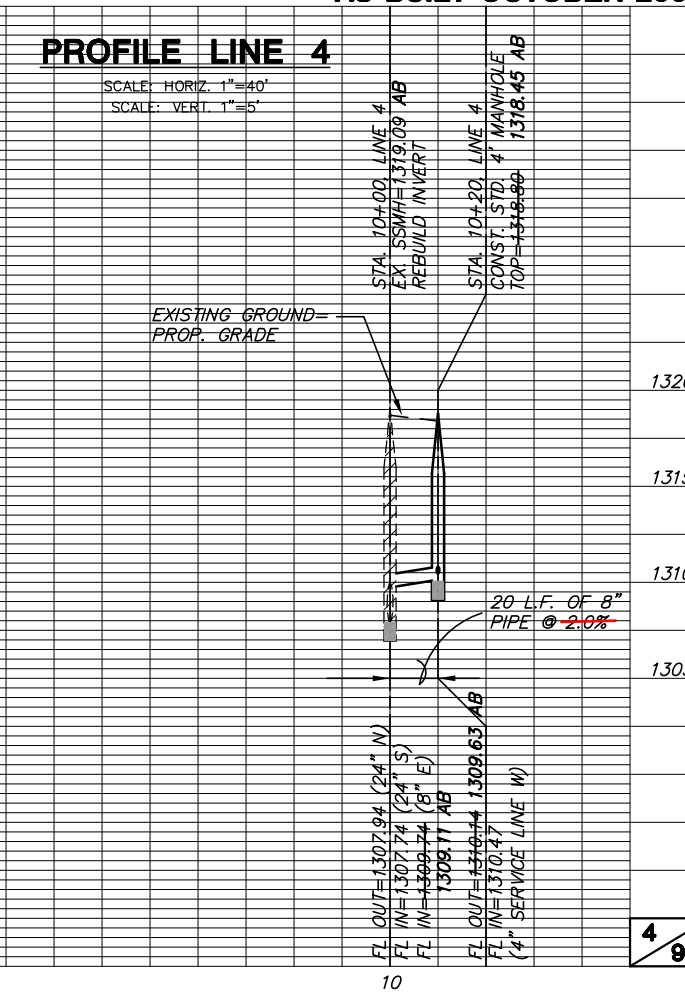
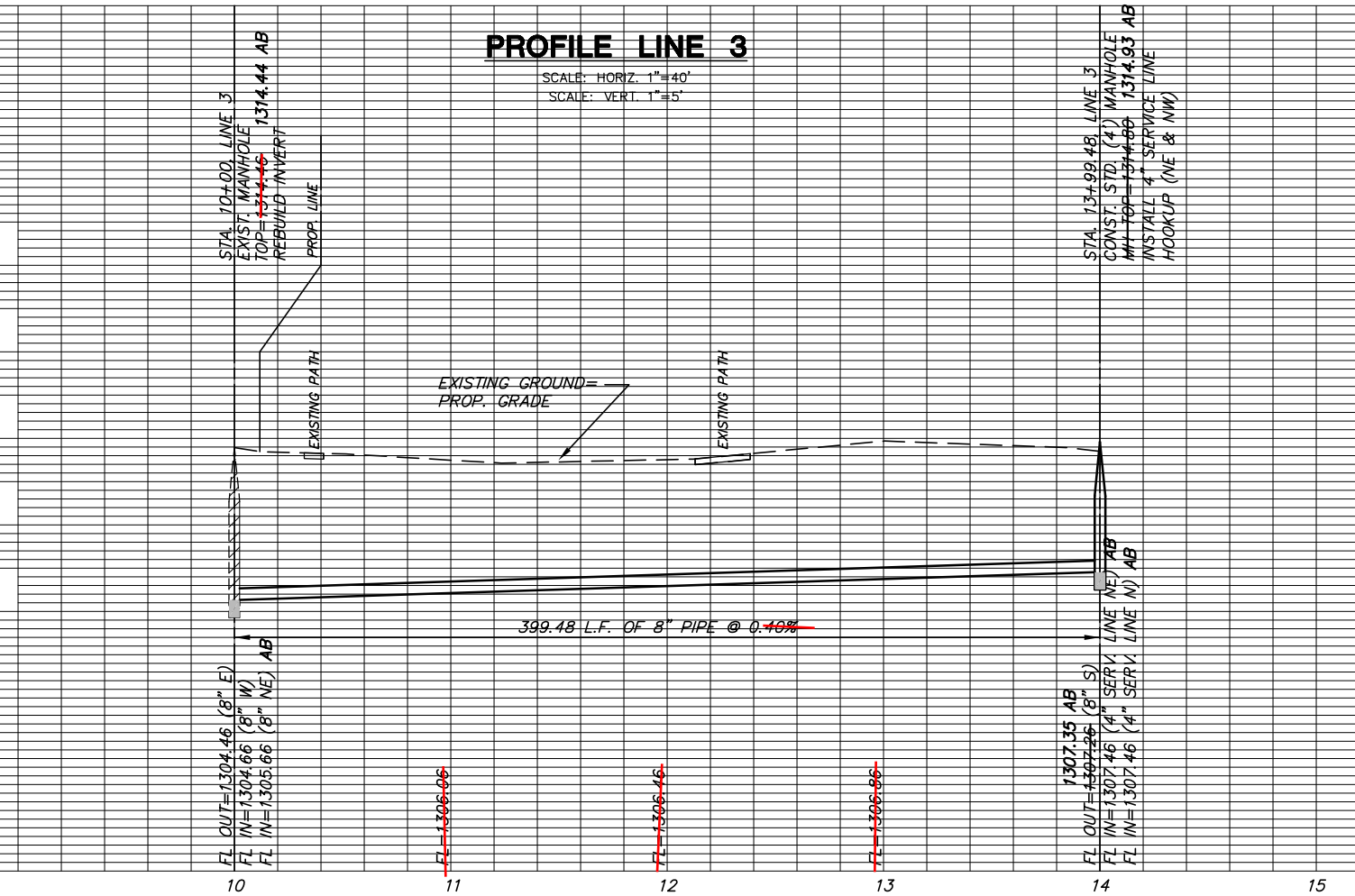
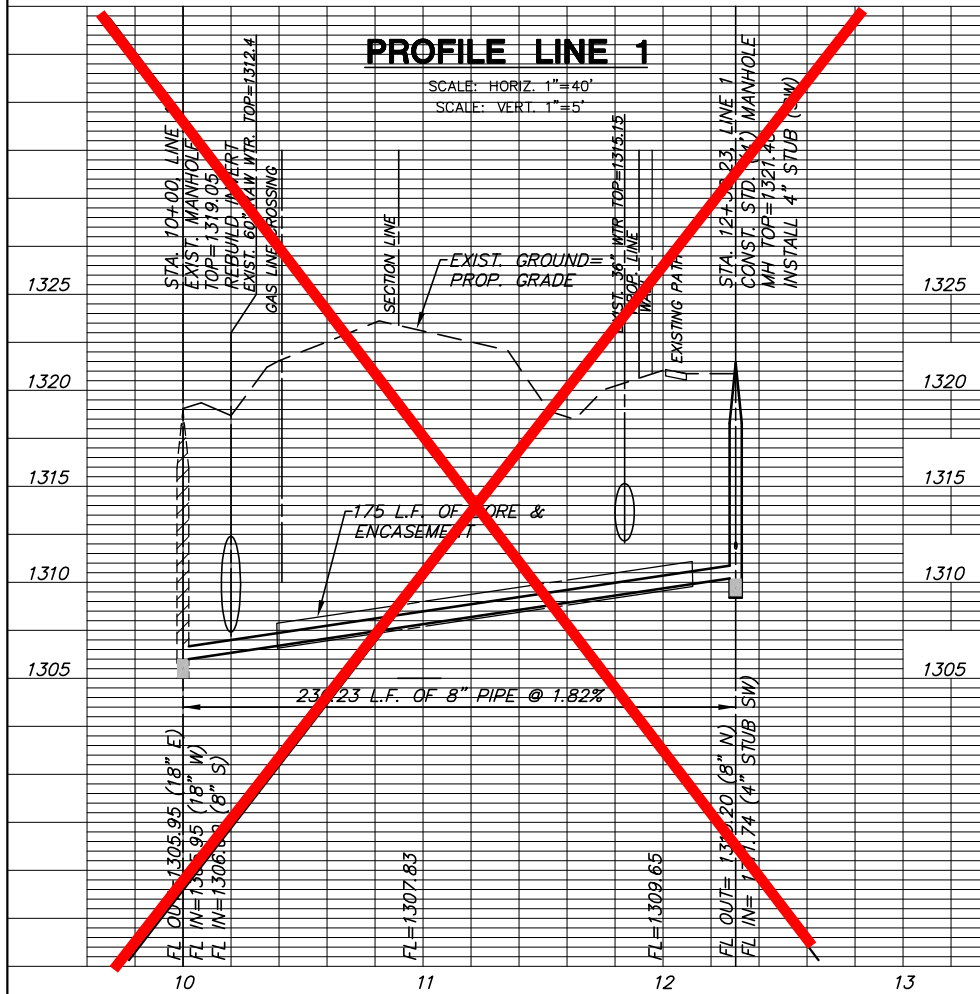
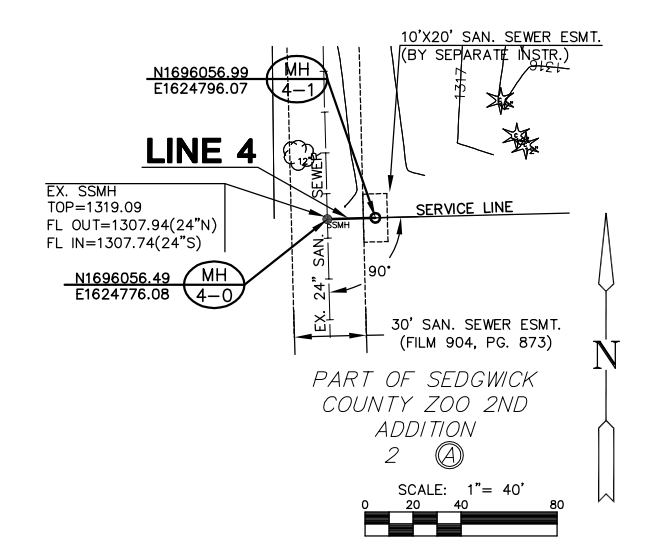
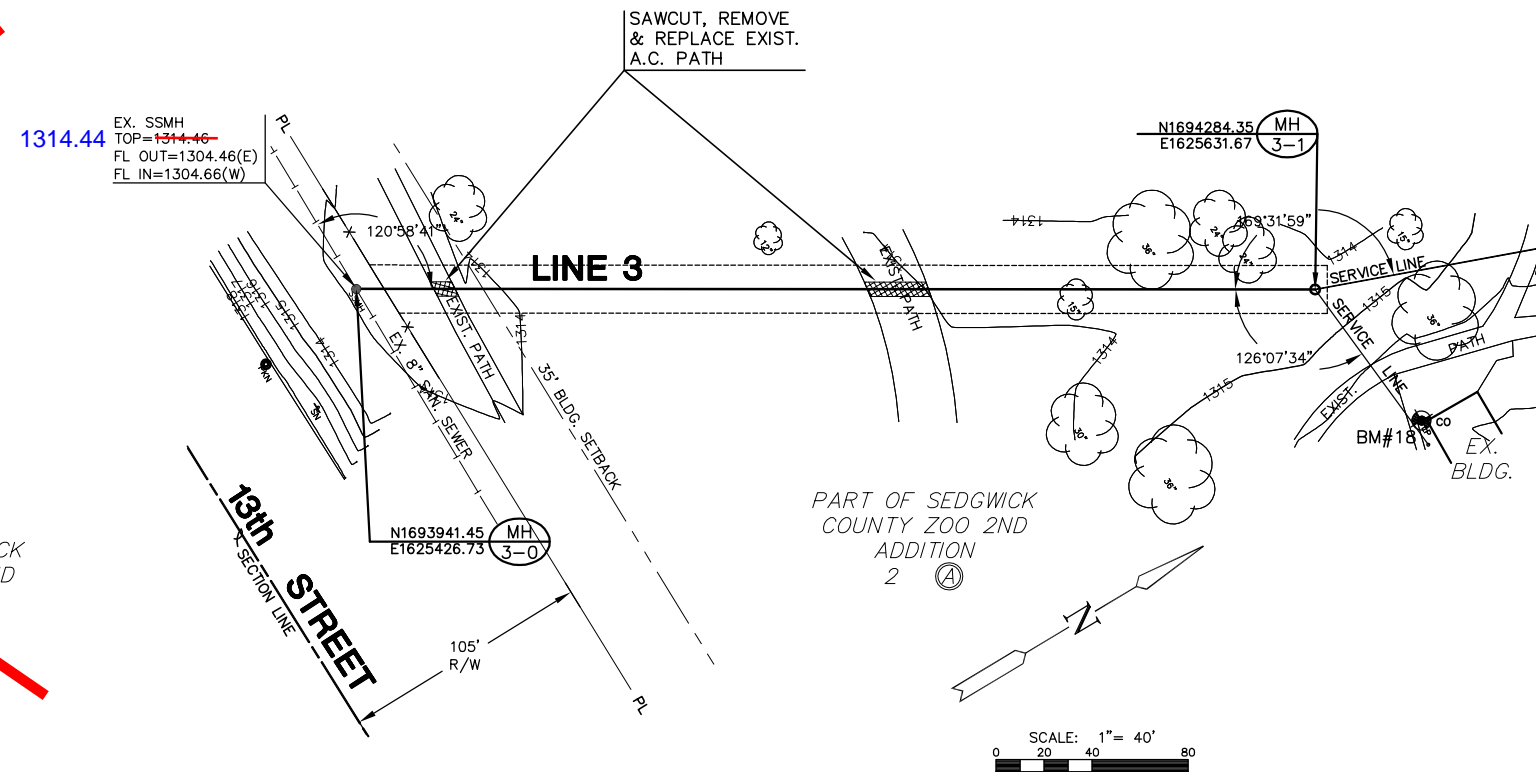
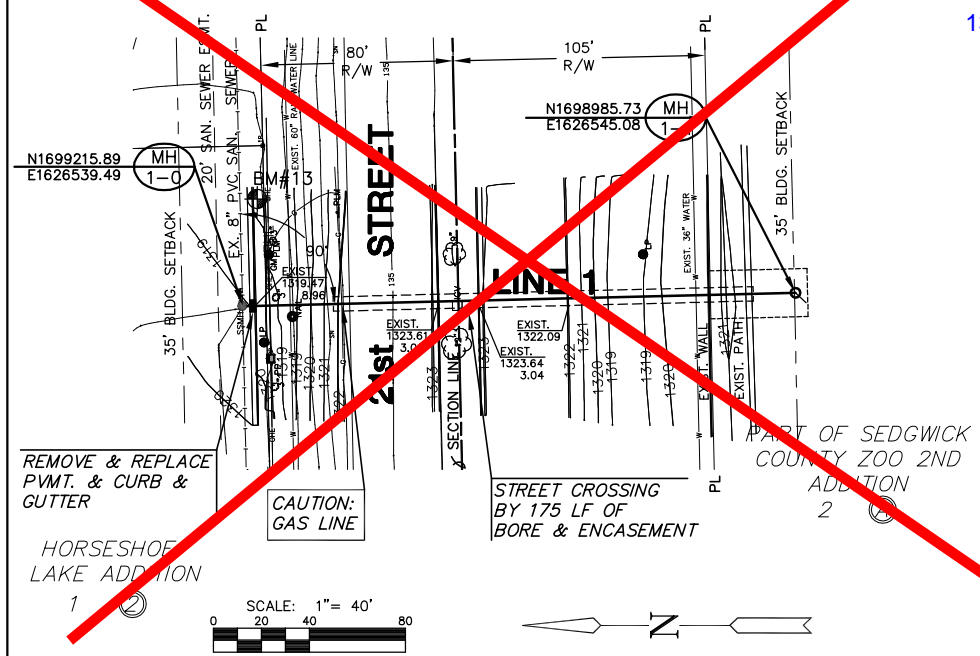
H:\CIVIL\03123\05138\DWG\SAN\05138BT.DWG

**SEDGWICK COUNTY
PARK SANITARY SEWER
PROJ. NO. 1631PPS**

NOTE: CONTRACTOR TO VERIFY DEPTH AND LOCATION OF EXISTING UTILITIES PRIOR TO CONSTRUCTION.

NOTE: SERVICE LINES TO BE INSTALLED BY OTHERS SUBJECT TO O.C.I. REVIEW.

SEE PAGE 6 OF 9 FOR SERVICE LINES



AS-BUILT OCTOBER 2007

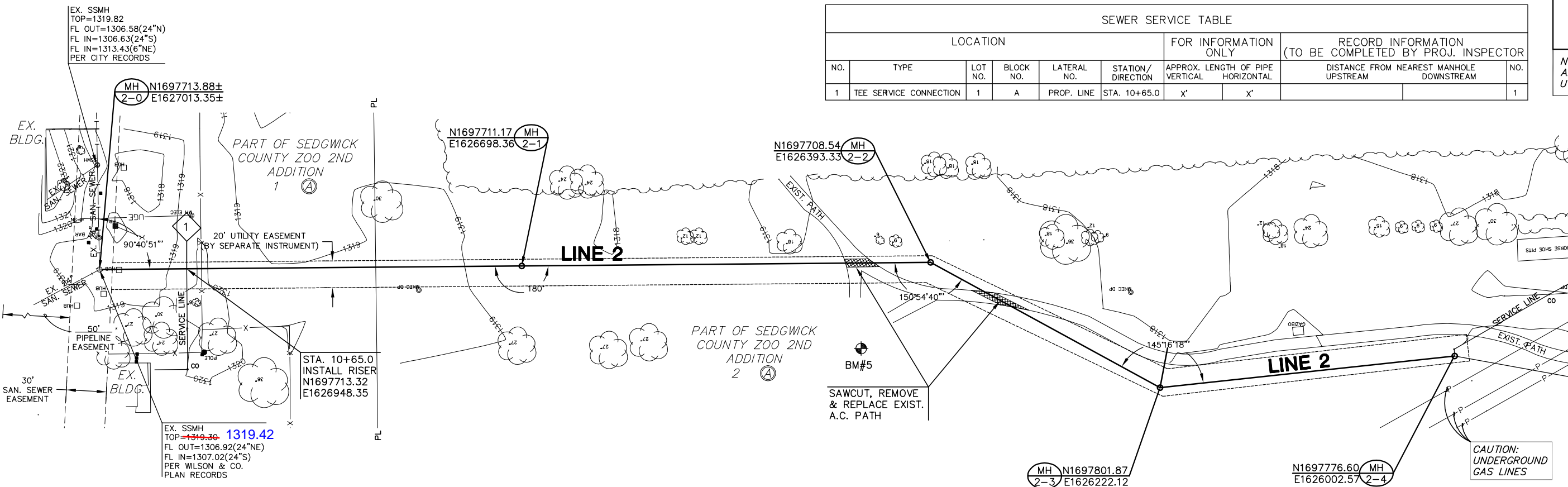
**SEDGWICK COUNTY
PARK SANITARY SEWER
PROJ. NO. 1631PPS**

NOTE: CONTRACTOR TO VERIFY DEPTH AND LOCATION OF EXISTING UTILITIES PRIOR TO CONSTRUCTION.

NOTE: SERVICE LINES TO BE INSTALLED BY OTHERS SUBJECT TO O.C.I. REVIEW.

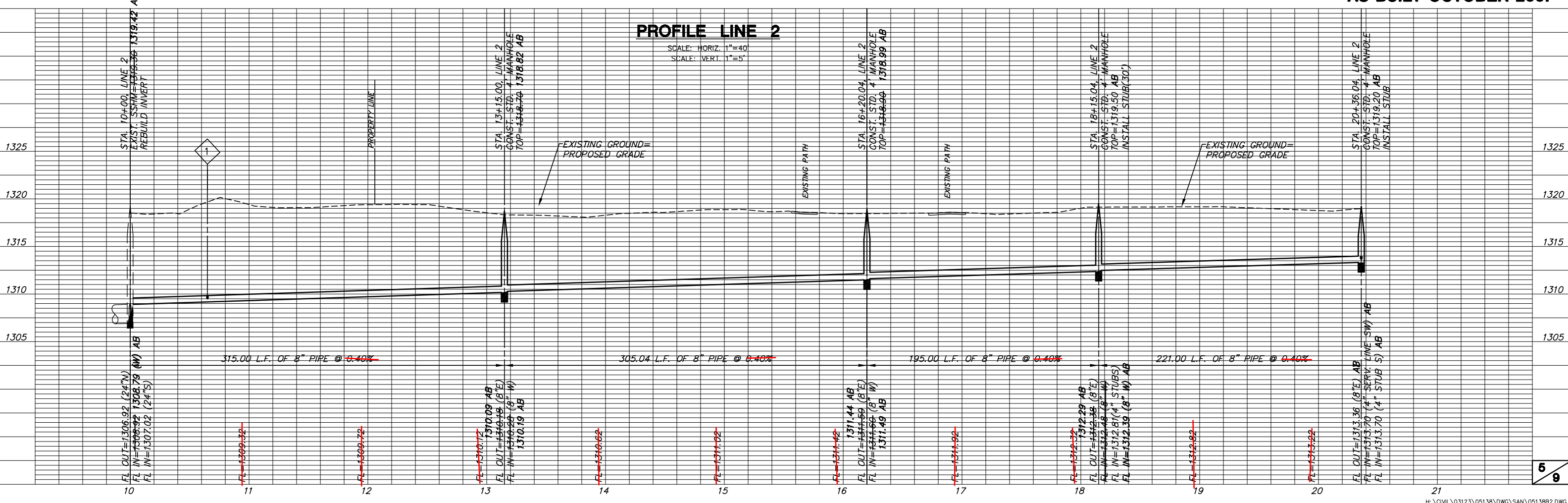
SEE PAGE 6 OF 9 FOR SERVICE LINES

SEWER SERVICE TABLE										
LOCATION						FOR INFORMATION ONLY		RECORD INFORMATION (TO BE COMPLETED BY PROJ. INSPECTOR)		
NO.	TYPE	LOT NO.	BLOCK NO.	LATERAL NO.	STATION / DIRECTION	APPROX. LENGTH OF PIPE VERTICAL	HORIZONTAL	DISTANCE FROM NEAREST MANHOLE UPSTREAM	DISTANCE FROM NEAREST MANHOLE DOWNSTREAM	NO.
1	TEE SERVICE CONNECTION	1	A	PROP. LINE	STA. 10+65.0	X'	X'			1

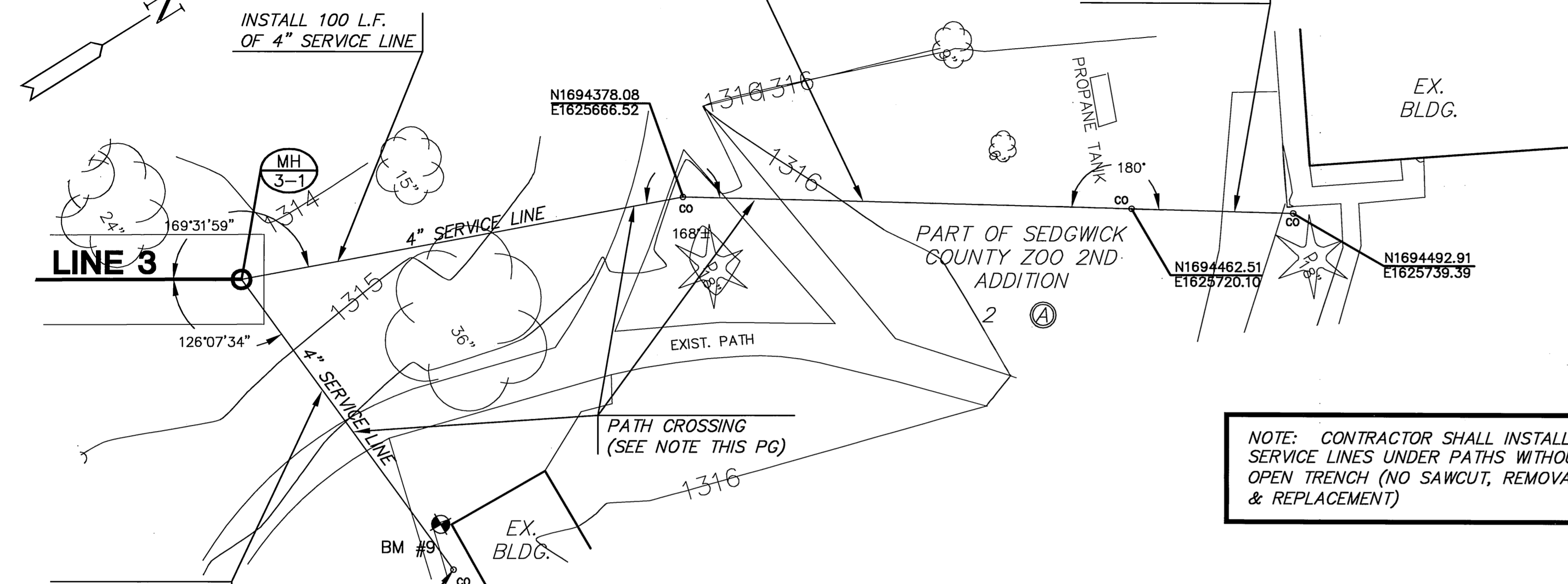
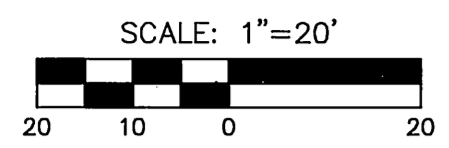


PLAN LINE 2

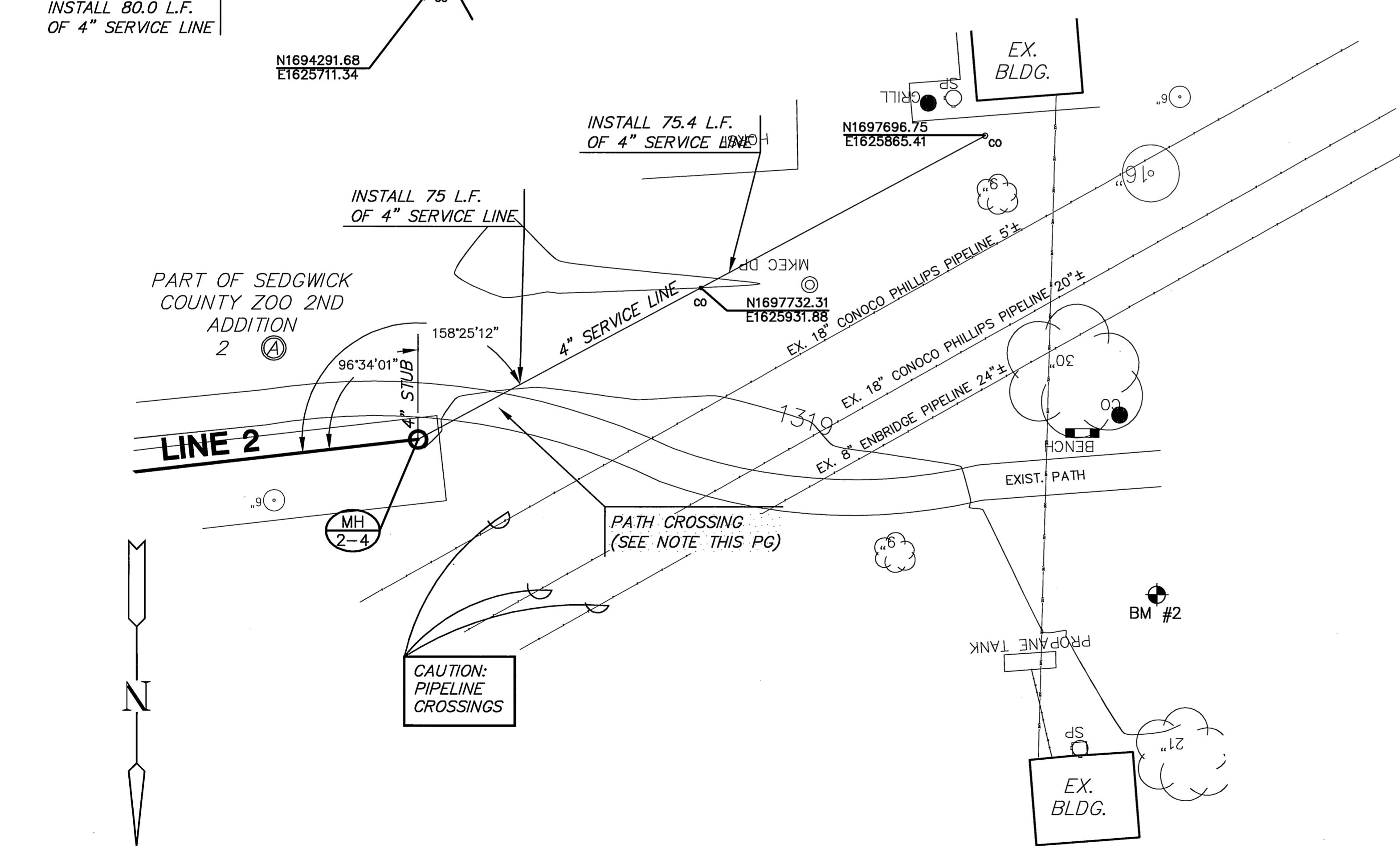
AS-BUILT OCTOBER 2007



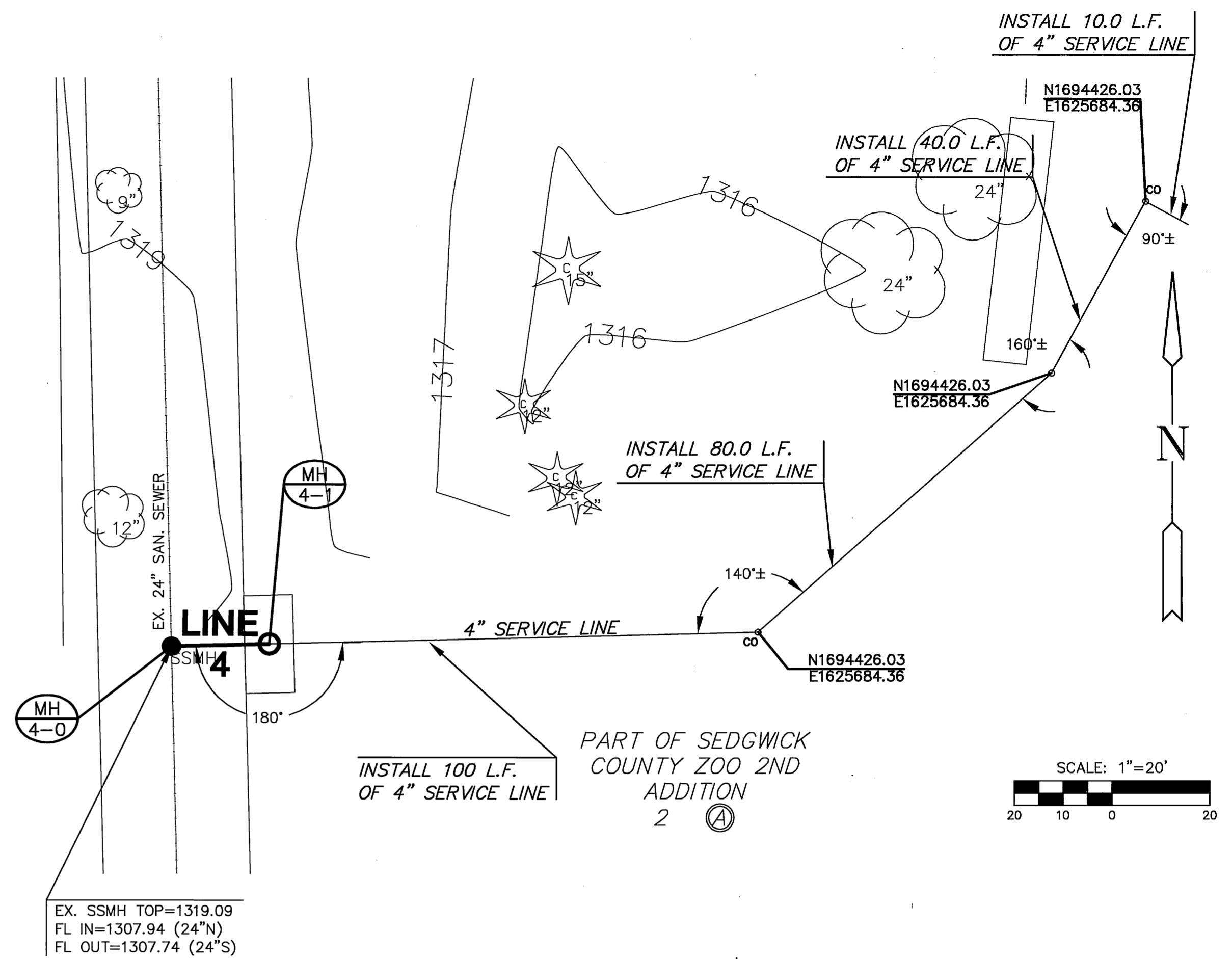
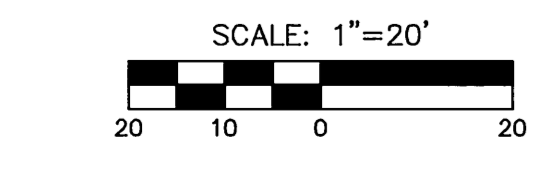
PROFILE LINE 2



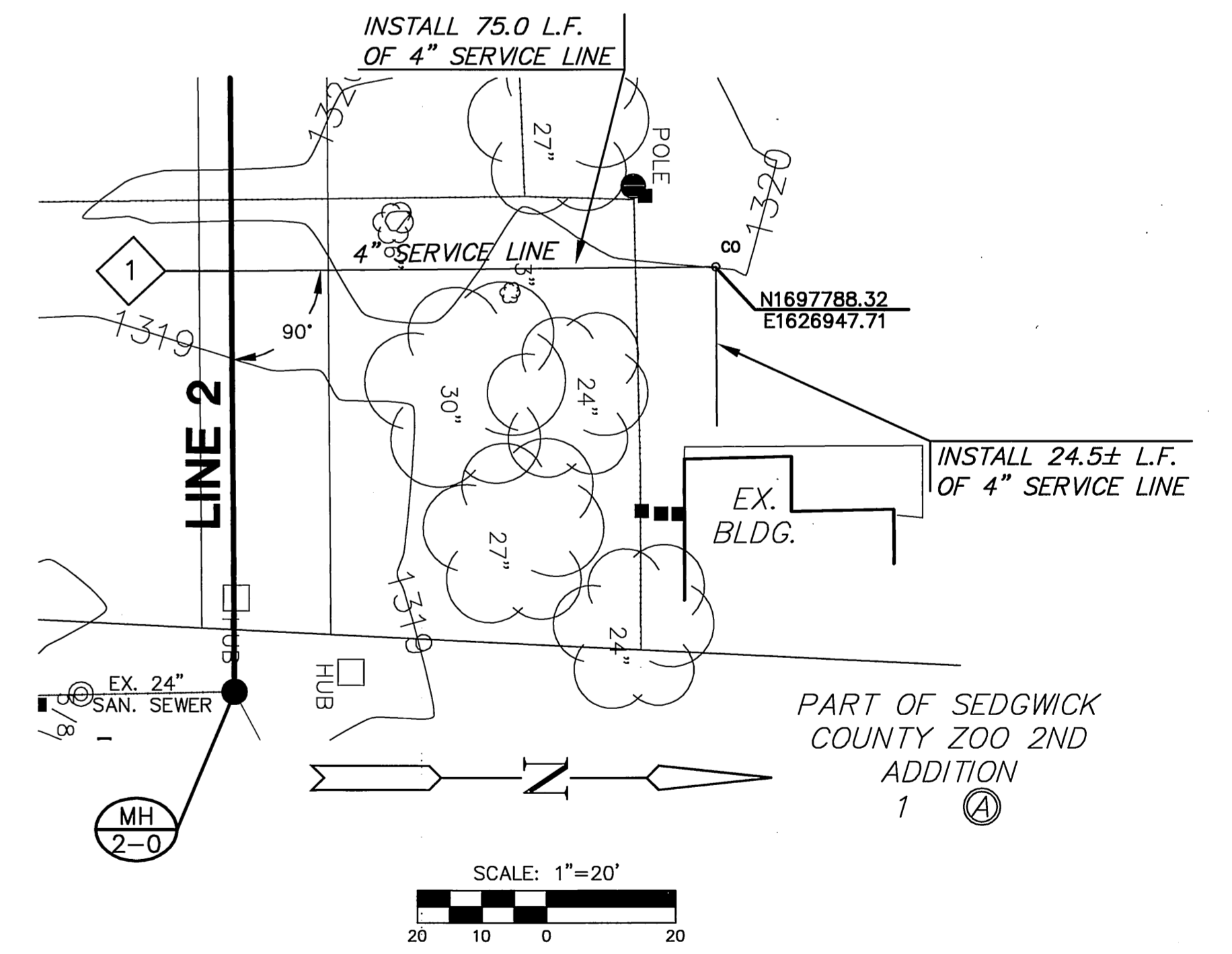
NOTE: CONTRACTOR SHALL INSTALL SERVICE LINES UNDER PATHS WITHOUT OPEN TRENCH (NO SAWCUT, REMOVAL & REPLACEMENT)



CAUTION: PIPELINE CROSSINGS



EX. SSMH TOP=1319.09
FL IN=1307.94 (24"N)
FL OUT=1307.74 (24"S)



NOTE: SERVICE LINES TO BE INSTALLED BY OTHERS SUBJECT TO O.C.I. REVIEW.

NOTE: CONTRACTOR TO VERIFY DEPTH AND LOCATION OF EXISTING UTILITIES PRIOR TO CONSTRUCTION.

<p>MKEC ENGINEERING CONSULTANTS 411 N. WEBB ROAD WICHITA, KS. 67206 316-684-9600</p>	<p>PRIVATE SANITARY SEWER TO SERVE SEDGWICK COUNTY ZOO 2ND ADD. PROJECT NAME</p>		
	<p>SERVICE LINES SHEET TITLE</p>		
<p>DESIGN BY: MKEC</p>	<p>DRAWN BY: MKEC</p>	<p>CHECKED BY: JTC</p>	
<p>DATE: JAN. 2006</p>	<p>JOB NO.: 05138</p>	<p>SHEET/OF: 6 / 9</p>	

FH: \CVIL\03123\05138\DWG\SAN\05138B-3.DWG