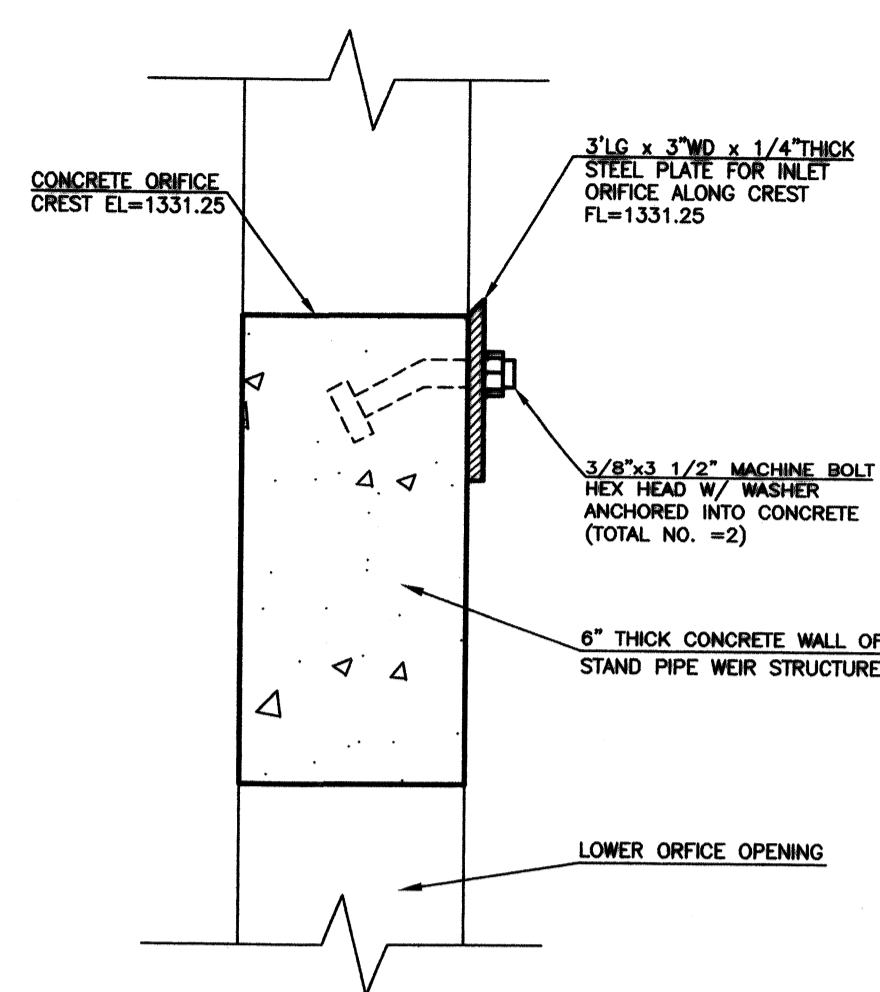


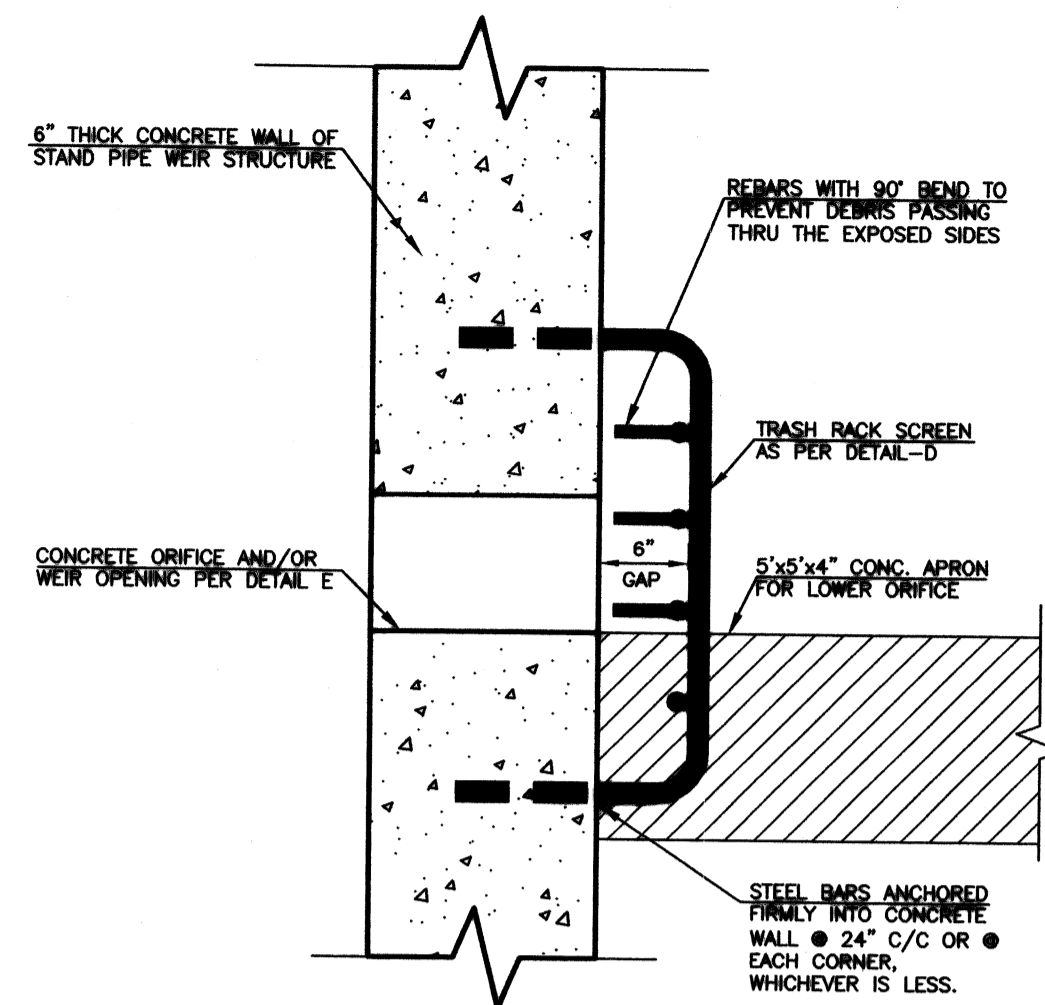
DETAIL-A
N.T.S.

NOTE:
1. REBARS AND TRASH RACKS ARE NOT SHOWN HERE FOR CLARITY.



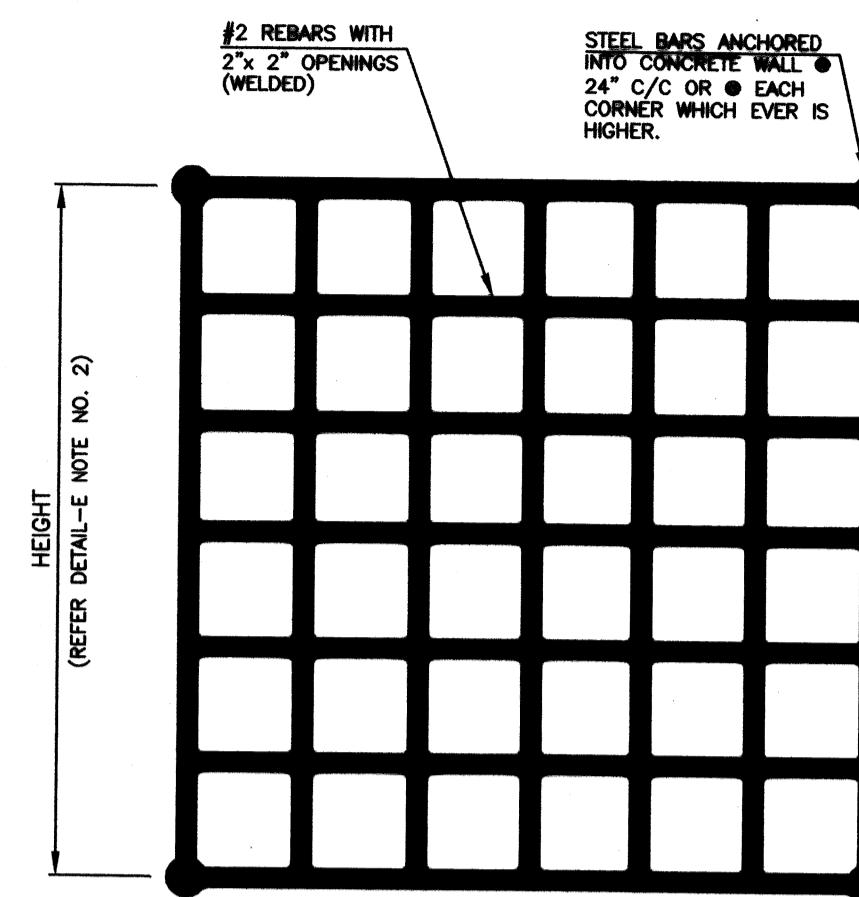
DETAIL-B
N.T.S.

NOTE:
1. REBARS AND TRASH RACKS ARE NOT SHOWN HERE FOR CLARITY.

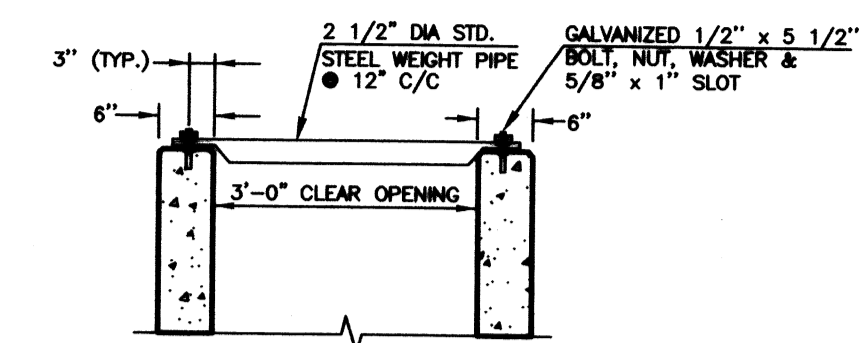


DETAIL-C
N.T.S.

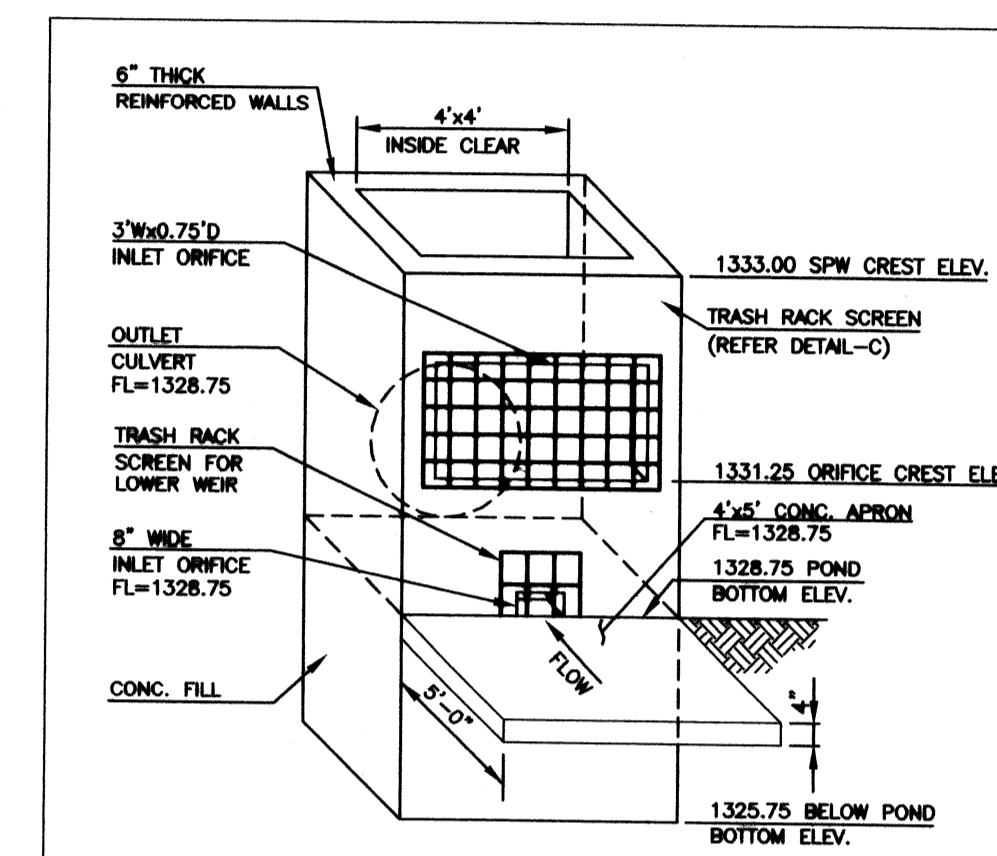
NOTE:
1. REBARS ARE NOT SHOWN HERE FOR CLARITY.



DETAIL-D
N.T.S.
TRASH RACK SCREEN
N.T.S.

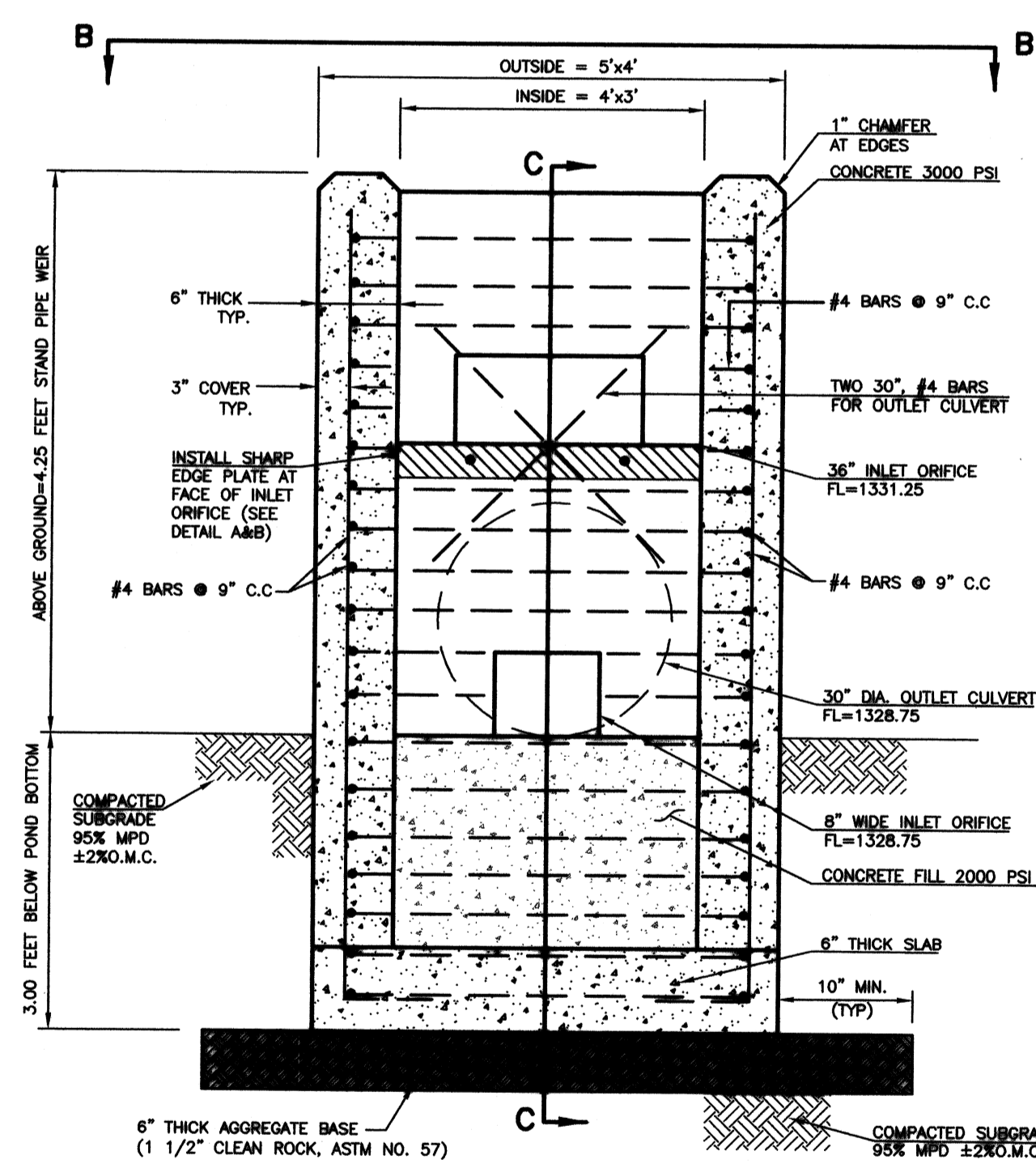


DETAIL-F
PIPE GRATE
N.T.S.



DETAIL-E
CONCRETE STAND PIPE WEIR (SPW) FOR SOUTH DETENTION POND
N.T.S.

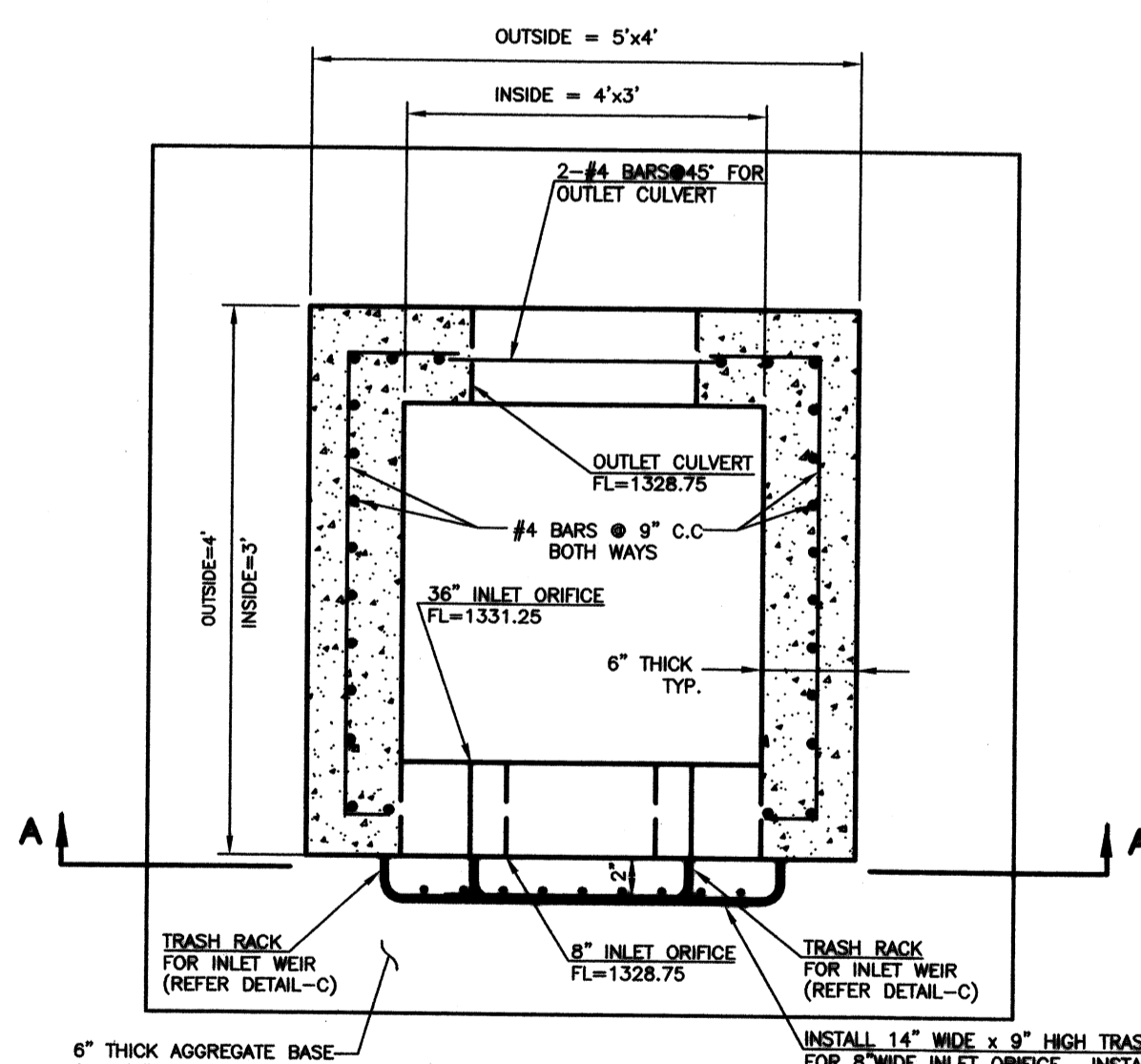
NOTE:
1. REBARS AND CONCRETE THICKNESS OF THE SPW IS NOT SHOWN HERE FOR CLARITY.
2. INSTALL 14" WIDE x 9" HIGH TRASH RACK SCREEN FOR 8" WIDE INLET ORIFICE. INSTALL 42" WIDE x 15" HIGH TRASH RACK SCREEN FOR 36" WIDE INLET ORIFICE. TRASH RACK SCREENS TO BE #2 REBARS WITH 2"x2" OPENINGS (WELDED). ANCHOR TRASH RACK INTO STAND PIPE WEIR FACE WALL WITH ANCHORED BARS INTO CONCRETE WALL (REFER DETAIL-C).



SECTION A-A
N.T.S.

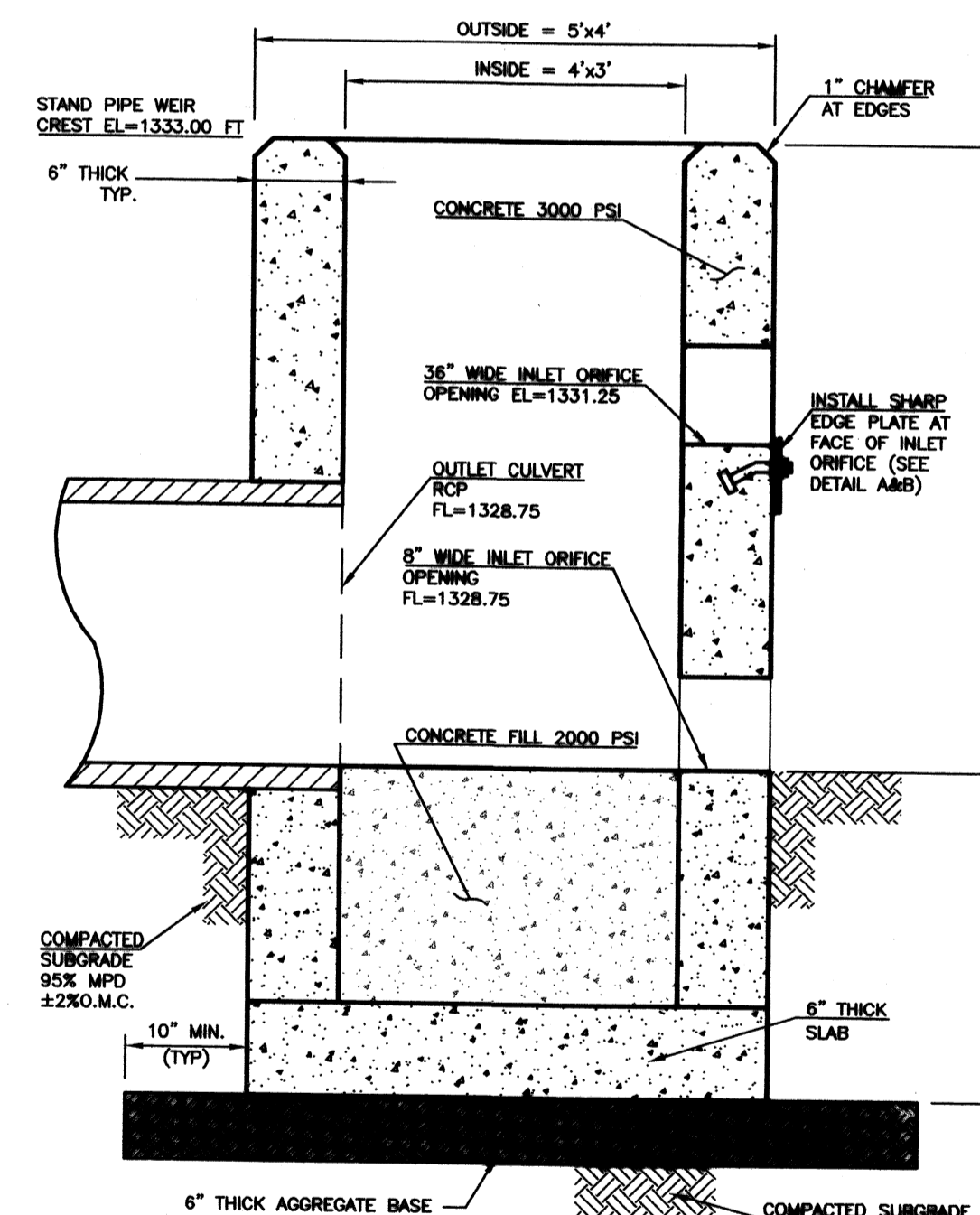
NOTE:
1. REINFORCED STEEL SHALL BE DEFORMED BARS. COST OF STEEL, CONCRETE & MISCELLANEOUS FITTINGS SHALL BE INCLUDED IN PRICE BID FOR STAND PIPE WEIR STRUCTURE.
2. SOME OF THE REBARS IN SECTION A-A OR B-B VIEW MAY NOT BE SHOWN FOR CLARITY PURPOSES. HOWEVER, CONTRACTOR SHALL READ SECTION A-A AND B-B TOGETHER TO CALCULATE THE REBARS QUANTITIES.
3. ALL CONSTRUCTION AND MATERIALS SHALL BE IN ACCORDANCE WITH THE CURRENT APPLICABLE STANDARDS OR SUPPLEMENTAL SPECIFICATIONS.
4. CONCRETE STAND PIPE WEIR STRUCTURE SHALL BE PRE CAST.
5. CONCRETE SHALL BE AIR ENTRAINED PER KDOT SPECS.

CONCRETE STAND PIPE WEIR FOR SOUTH DETENTION POND
N.T.S.



SECTION B-B
N.T.S.

INSTALL 14" WIDE x 9" HIGH TRASH RACK SCREEN FOR 8" WIDE INLET ORIFICE. INSTALL 42" WIDE x 15" HIGH TRASH RACK SCREEN FOR 36" WIDE INLET ORIFICE. TRASH RACK SCREENS TO BE #2 REBARS WITH 2"x2" OPENINGS (WELDED). ANCHOR TRASH RACK INTO STAND PIPE WEIR FACE WALL WITH ANCHORED BARS INTO CONCRETE WALL (REFER DETAIL-C).



SECTION C-C
N.T.S.

NOTE:
1. REBARS AND TRASH RACKS ARE NOT SHOWN HERE FOR CLARITY.

STAND PIPE WEIR FOR SOUTH DETENTION POND

WAL-MART SUPERCENTER #4321-00

N.W. 53rd ST. NORTH & N. MERIDIAN WICHITA, KANSAS

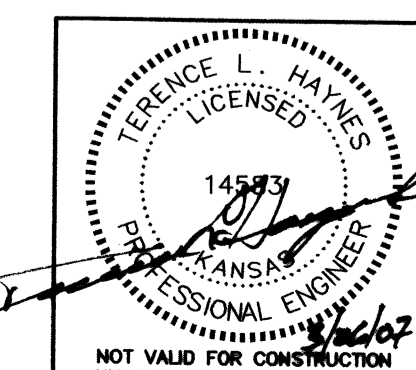
SMC Consulting Engineers, P.C.
815 West Main - Oklahoma City, OK 73106
PH: 405-232-7715 Fax: 405-232-7859

KANSAS CERTIFICATE OF AUTHORIZATION NO. E-335 EXP. DEC. 31, 2008

No.	Revision	By	Date
1	Per City comments	MDS	03/23/07

DATE: 12/12/06
DRAWN BY: MDS
PROJECT NO.: 4344.00

SCALE: N.T.S.
SHEET NO. C-11.12
ENGINEER: TERENCE L. HAYNES, P.E. #14583



14 OS 12 23