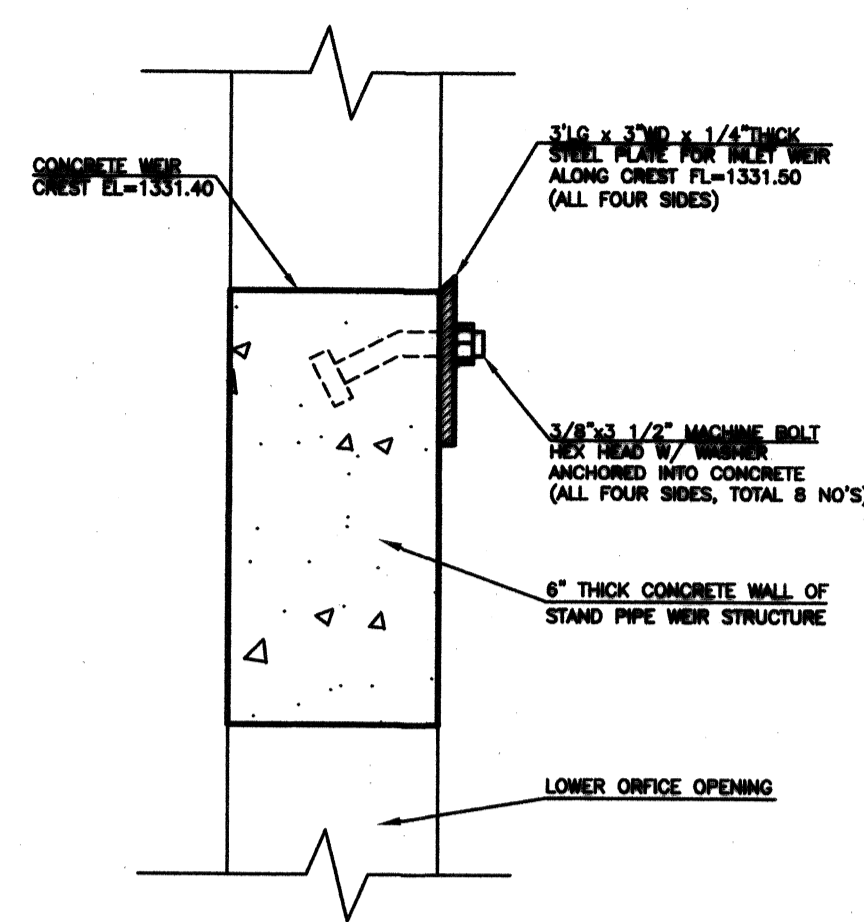


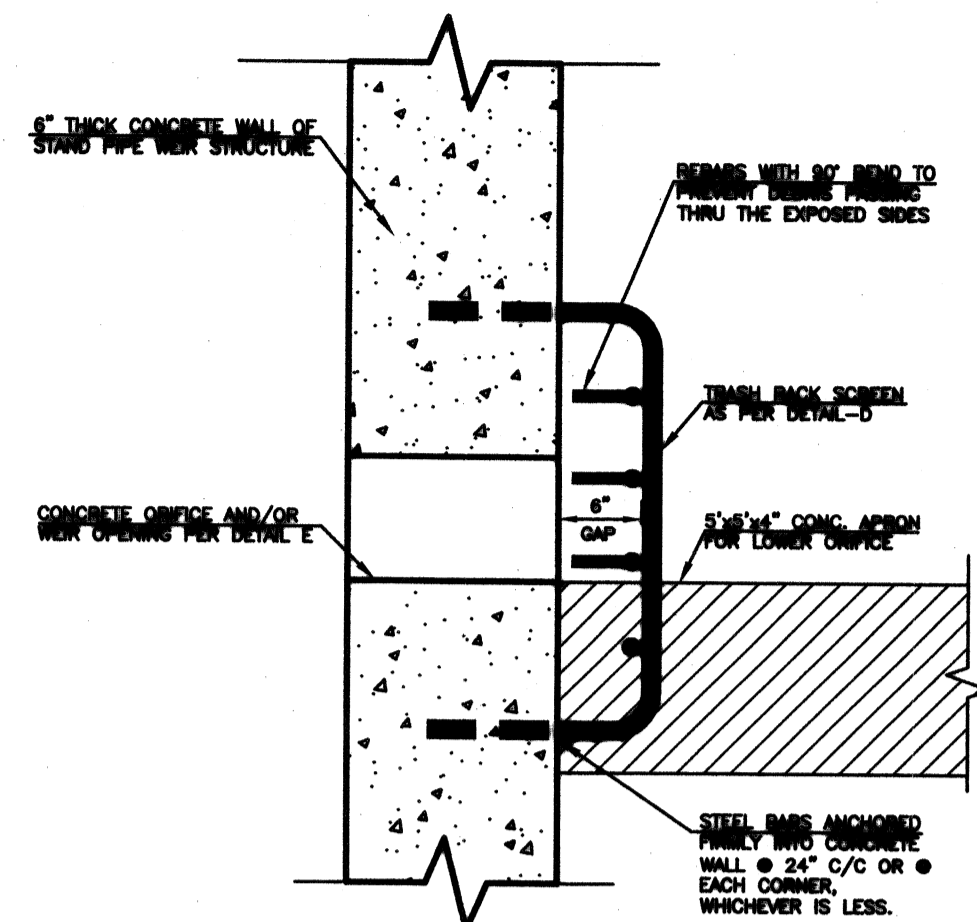
DETAIL-A

N.T.S.
NOTE: 1. REBARS AND TRASH RACKS ARE NOT SHOWN HERE FOR CLARITY.



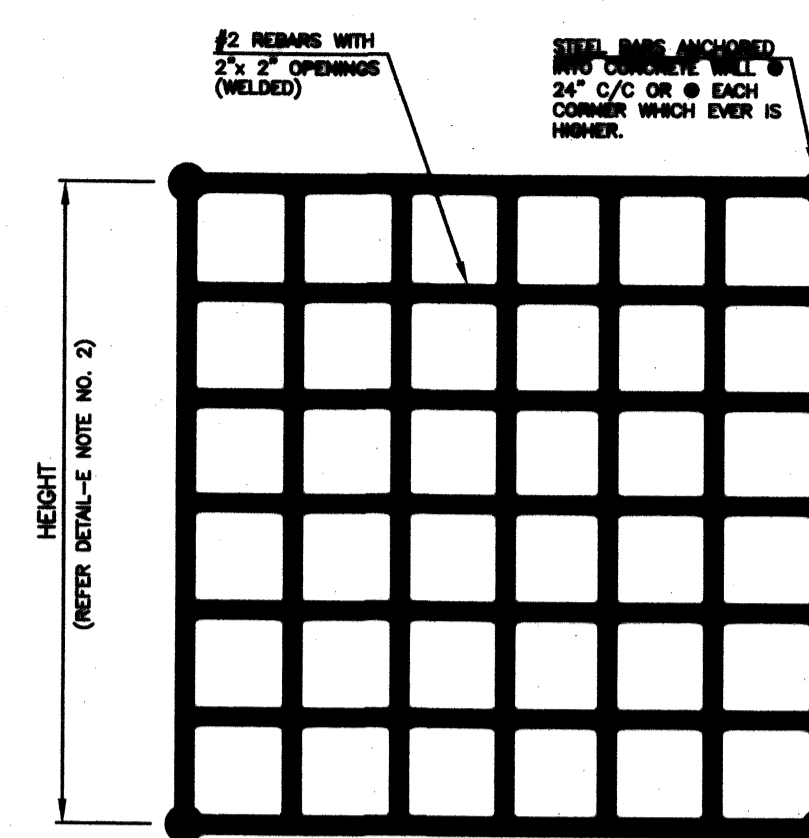
DETAIL-B

N.T.S.
NOTE: 1. REBARS AND TRASH RACKS ARE NOT SHOWN HERE FOR CLARITY.



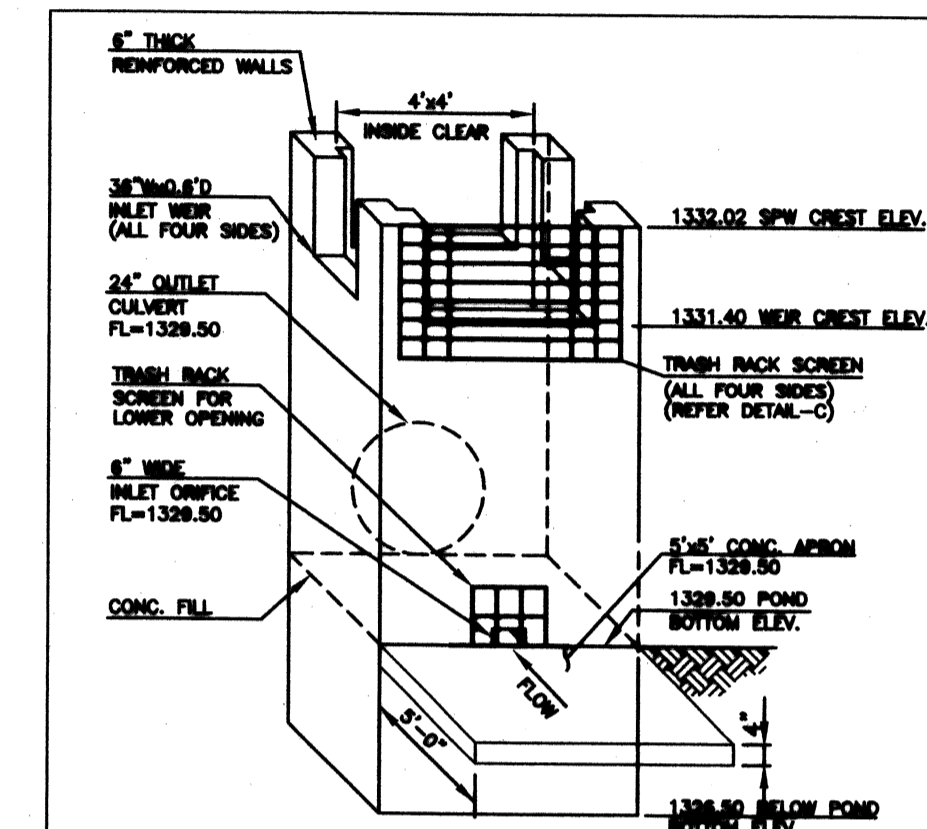
DETAIL-C

N.T.S.
NOTE: 1. REBARS ARE NOT SHOWN HERE FOR CLARITY.



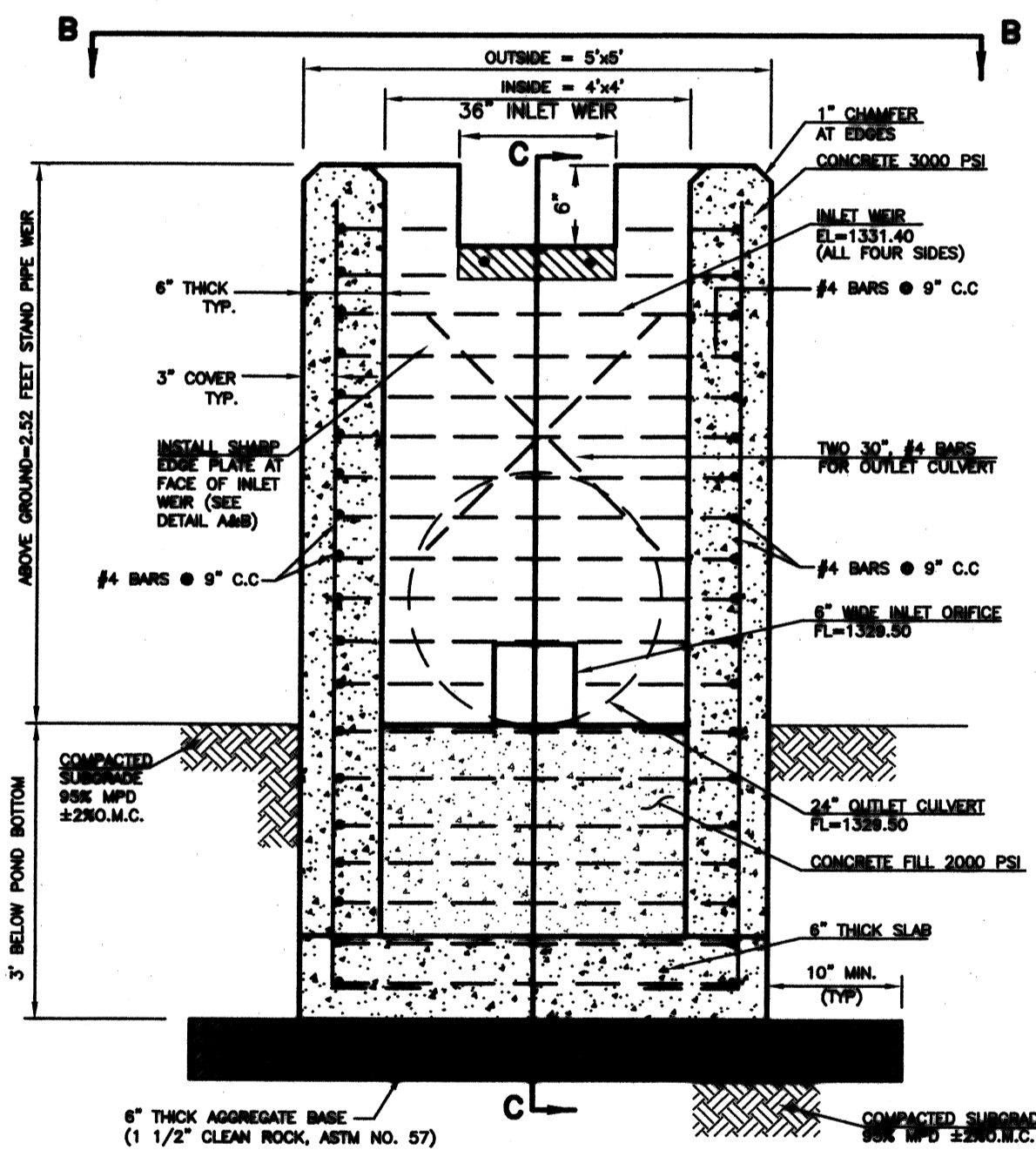
DETAIL-D

N.T.S.
TRASH RACK SCREEN
N.T.S.



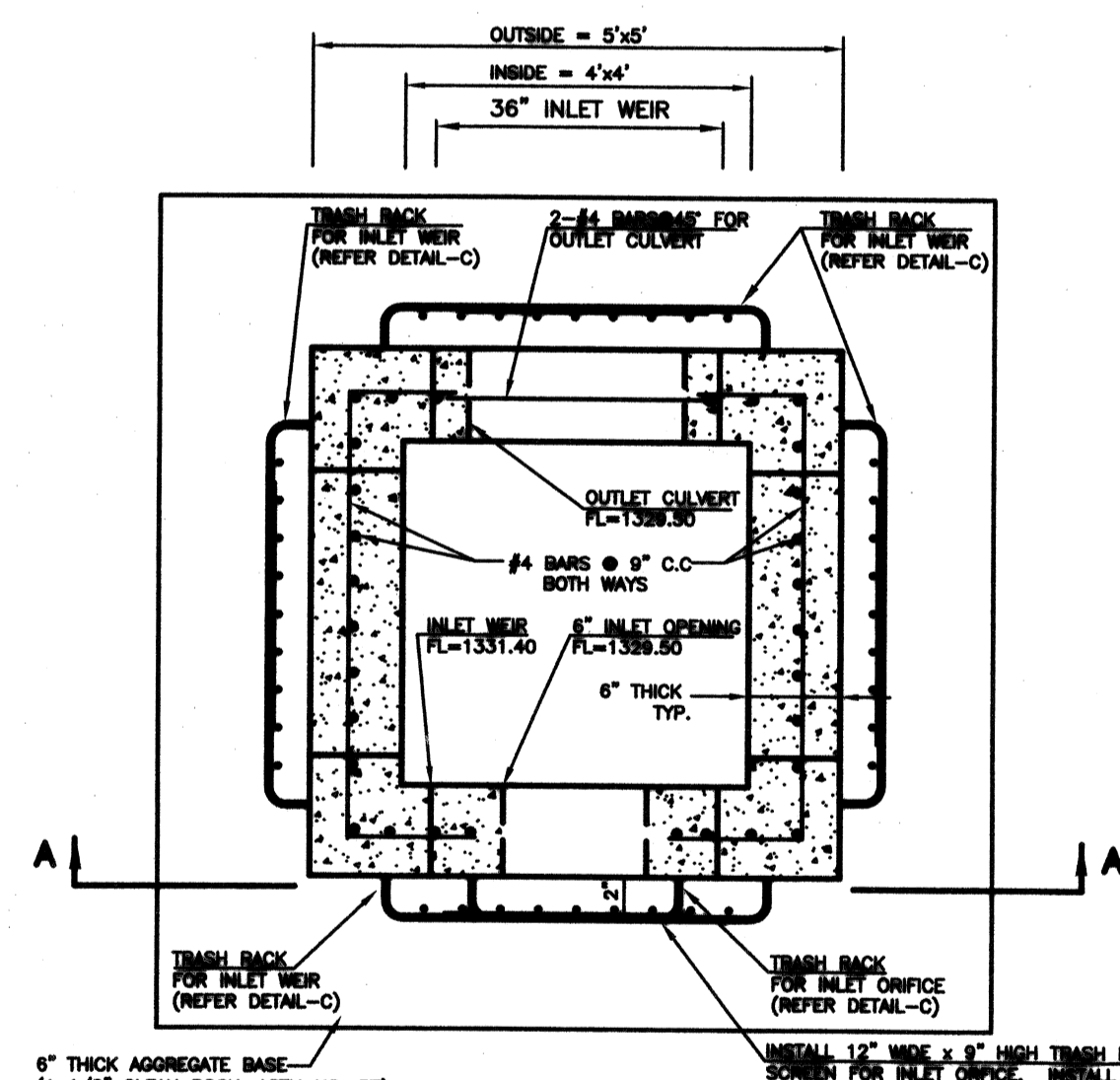
DETAIL-E
CONCRETE STAND PIPE WEIR (SPW)
FOR WEST DETENTION POND
N.T.S.

NOTE:
1. REBARS AND CONCRETE THICKNESS OF THE SPW IS NOT SHOWN HERE FOR CLARITY.
2. INSTALL 12" HIGH TRASH RACK SCREEN FOR INLET ORIFICE. INSTALL 42" HIGH TRASH RACK SCREEN FOR INLET WEIR ON FOUR SIDES. TRASH RACK SCREEN TO BE #2 REBARS WITH 2" OPENINGS (WELDED). ANCHOR TRASH RACK INTO STAND PIPE WEIR FACE WALL WITH ANCHORED BARS INTO CONCRETE WALL (REFER DETAIL-C).



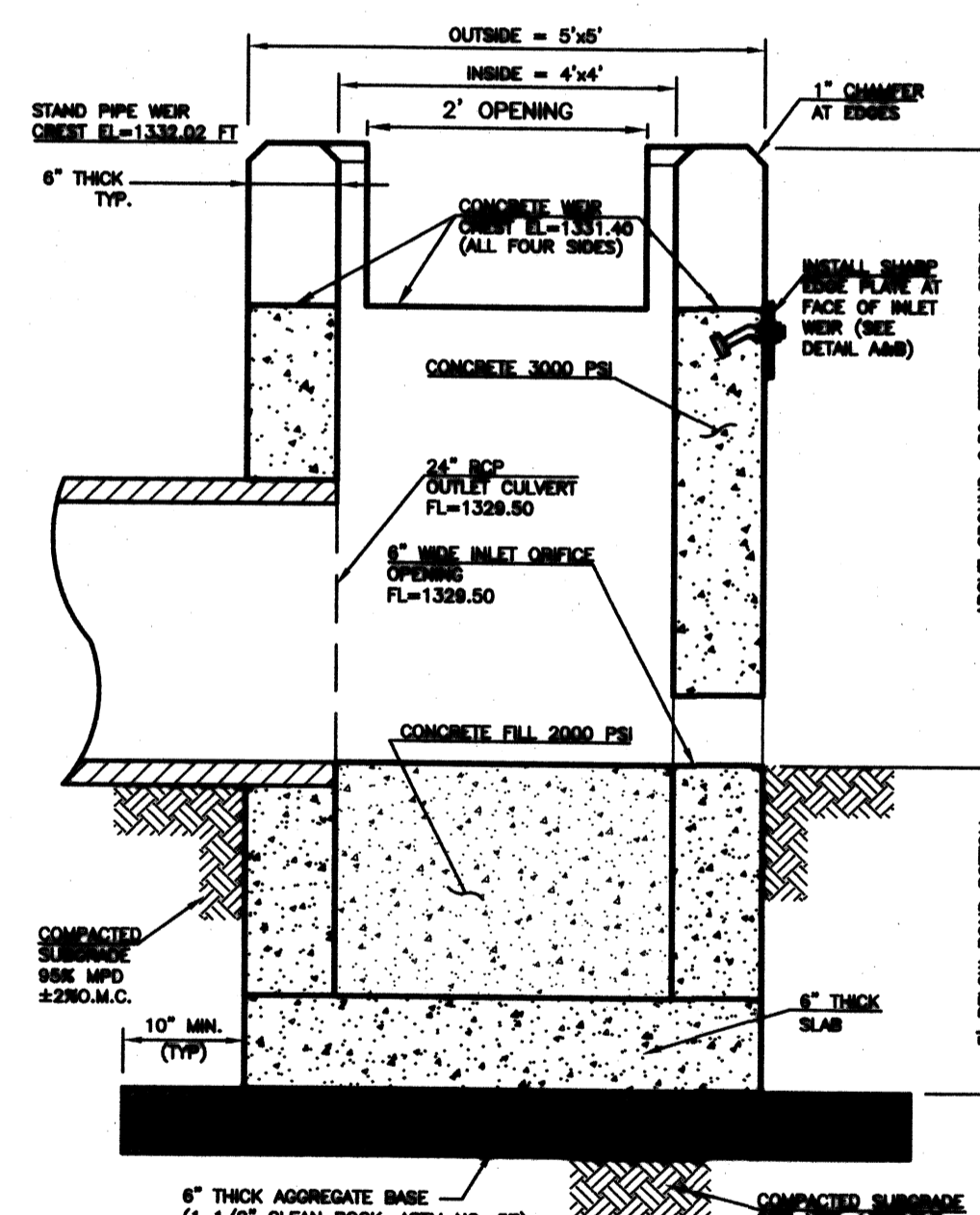
SECTION A-A

N.T.S.



SECTION B-B

N.T.S.



SECTION C-C

N.T.S.

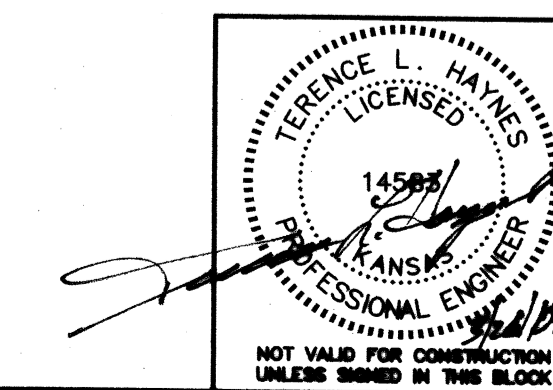
- NOTE:
1. REINFORCED STEEL SHALL BE DEFORMED BARS. COST OF STEEL, CONCRETE & MISCELLANEOUS FITTINGS SHALL BE INCLUDED IN PRICE BID FOR STAND PIPE WEIR STRUCTURE.
 2. SOME OF THE REBARS IN SECTION A-A OR B-B VIEW MAY NOT BE SHOWN FOR CLARITY PURPOSES. HOWEVER, CONTRACTOR SHALL READ SECTION A-A AND B-B TOGETHER TO CALCULATE THE REBAR QUANTITIES.
 3. ALL CONSTRUCTION AND MATERIALS SHALL BE IN ACCORDANCE WITH THE CURRENT APPLICABLE STANDARDS OR SUPPLEMENTAL SPECIFICATIONS.
 4. CONCRETE STAND PIPE WEIR STRUCTURE SHALL BE PRE CAST.
 5. CONCRETE SHALL BE AIR ENTRAINMENT PER DOT SPECS.

CONCRETE STAND PIPE WEIR
FOR WEST DETENTION POND
N.T.S.

STAND PIPE WEIR FOR WEST
DETENTION POND

WAL-MART SUPERCENTER #4321-00
NW 53rd ST. NORTH & N. MERIDIAN
WICHITA, KANSAS

SMC Consulting Engineers, P.C.
815 West Main - Oklahoma City, OK 73106
PH: 405-232-7715 Fax: 405-232-7859
KANSAS CERTIFICATE OF AUTHORIZATION NO. E-335 EXP. DEC. 2006



No.	Revision	Date
1	Per City comments	01/21/07

DATE: 12/12/06
DRAWN BY: TN
PROJECT NO.: 4344.00
ENGINEER: TERENCE L. HAYNES, P.E. #14583

SCALE: NTS
SHEET NO. C-8.20