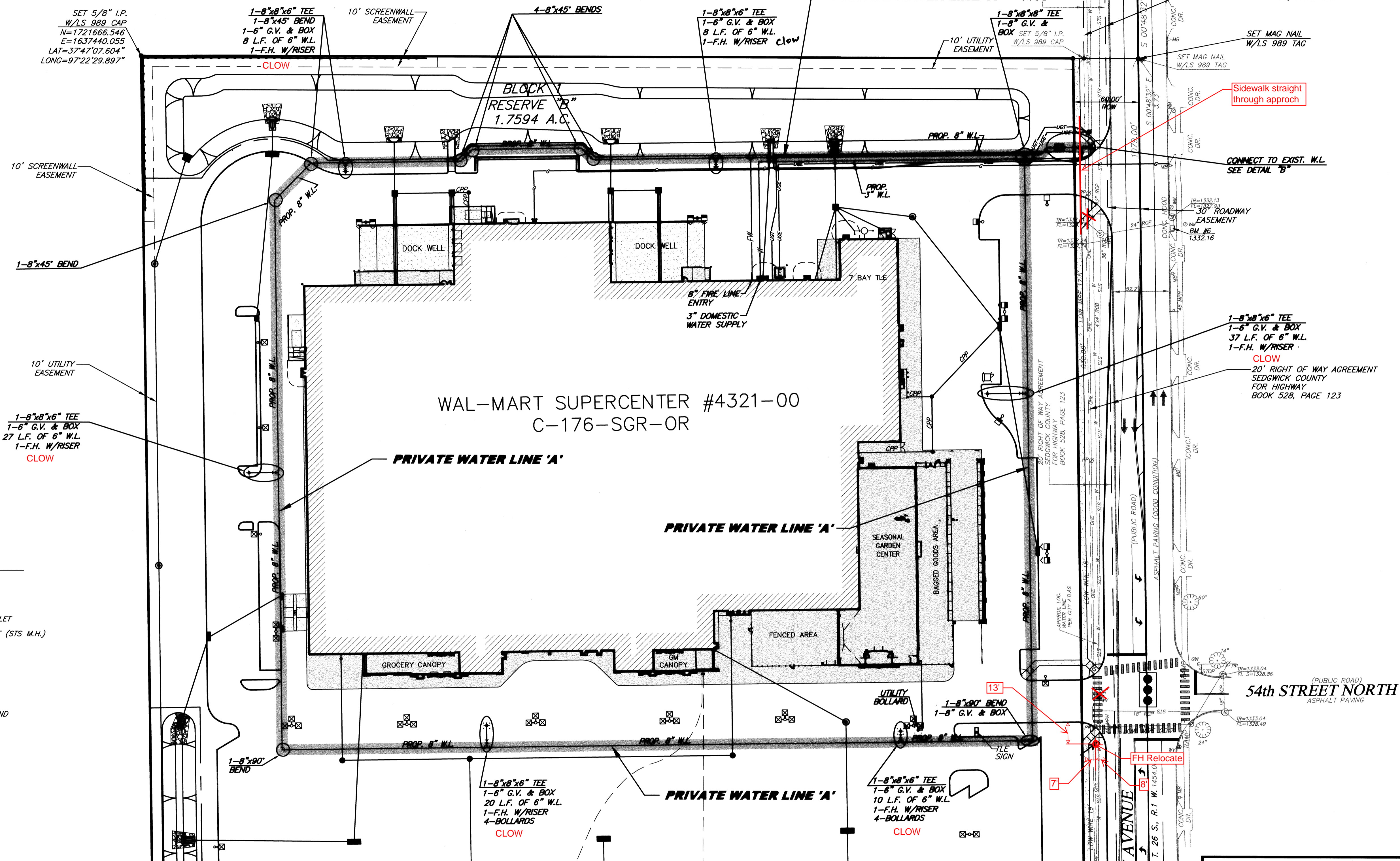


LEGEND

	SIGN (i.e. STOP, YIELD, etc...)		PROPOSED CONTOUR & CONTOUR ELEVATION
	LIGHT POLE AND FIXTURE TYPE		STORM SEWER INLET
	HEAVY DUTY CONCRETE (H.D.C.)		STORM SEWER CURB INLET
	HEAVY DUTY ASPHALT (H.D.A.)		STORM SEWER MANHOLE (STS M.H.)
	STANDARD DUTY ASPHALT (S.D.A.)		S.S. MANHOLE
	CONCRETE BARRIER		S.S. CLEANOUTS
	STRAIGHT ARROW		FUTURE CURB & GUTTER BY OTHERS
	LEFT TURN ARROW		UGE - POWER UNDERGROUND
	RIGHT TURN ARROW		UTE - TELEPHONE UNDERGROUND
	3 WAY FIRE HYDRANT		POWER OVERHEAD
	TEE		GAS LINE
	GATE VALVE		FLOW DIRECTION
	CART CORRALS		STS - STORM SEWER
	L.S. - LANDSCAPE		

UTILITY STATEMENT & CAUTION:

THE CONTRACTOR IS SPECIFICALLY CAUTIONED THAT THE LOCATION AND/OR ELEVATION OF EXISTING UTILITIES AS SHOWN ON THESE PLANS IS BASED ON A COMBINATION OF FIELD SURVEY INFORMATION, EXISTING DRAWINGS AND RECORDS OF THE VARIOUS UTILITY COMPANIES. THE ENGINEER MAKES NO GUARANTEE THAT THE UNDERGROUND UTILITIES SHOWN COMPRISE ALL SUCH UTILITIES IN THE AREA, EITHER IN SERVICE OR ABANDONED. THE ENGINEER FURTHER DOES NOT WARRANT THAT THE UNDERGROUND UTILITIES SHOWN ARE IN THE EXACT LOCATION INDICATED ALTHOUGH HE DOES CERTIFY THAT THEY ARE LOCATED AS ACCURATELY AS POSSIBLE FROM INFORMATION AVAILABLE. THE ENGINEER HAS NOT PHYSICALLY LOCATED THE UNDERGROUND UTILITIES. THE CONTRACTOR MUST CALL THE APPROPRIATE UTILITY COMPANY AT LEAST 48 HOURS BEFORE ANY EXCAVATION TO REQUEST EXACT FIELD LOCATION OF UTILITIES. IT SHALL BE THE RESPONSIBILITY OF THE CONTRACTOR TO RELOCATE ALL EXISTING UTILITIES WHICH CONFLICT WITH THE PROPOSED IMPROVEMENTS SHOWN ON THE PLANS.



PRIVATE WATER LINE LOCATION PLAN

WAL-MART SUPERCENTER #4321-00

N.W. 53rd ST. NORTH & N. MERIDIAN WICHITA, KANSAS

SMC Consulting Engineers, P.C.
 815 West Main - Oklahoma City, OK 73106
 PH: 405-232-7715 Fax: 405-232-7859

KANSAS CERTIFICATE OF AUTHORIZATION NO. E-335 EXP. DEC. 31, 2008

No.	Revision	By	Date
1	UPDATE PER CITY COMMENTS	DES	03/27/07

DATE: 03/14/07 SCALE: 1"=50 SHEET NO. C-9.2

DRAWN BY: MOS PROJECT NO.: 4344.00 ENGINEER: TERENCE L. HAYNES, P.E. #14583

