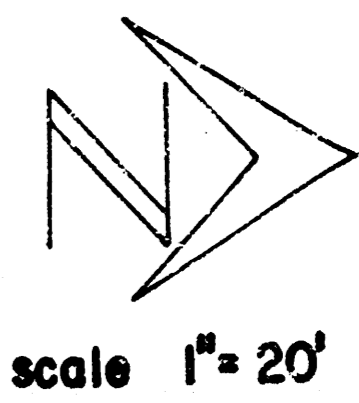


B.M. 10127 S.E. Cor. lat. conc. step Ho. 3302 W. 33rd. St. So.



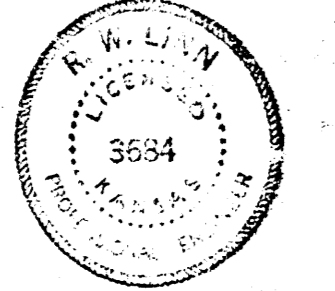
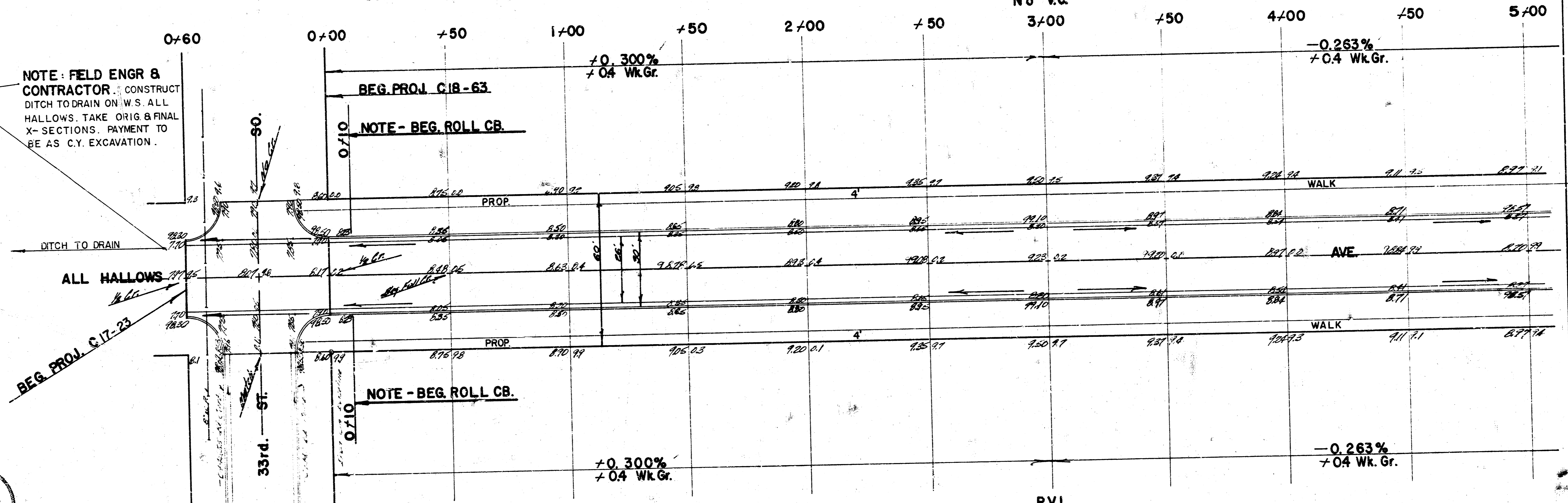
NOTE TO FIELD ENGR. & CONTRACTOR
 Elevs. shown are TOP CURB. Construct Full Cb. both intersections. Construct ROLL CURB from Sta 0+10 to 3+78 both sides.

NOTE: Contractor shall grade parking and clear R./W. for prop. sidewalk. Sidewalk to be built by Others

P.V.I.
 Elev. 99.40
 No V.C.

10127
 3302
 33rd St. So.

NOTE: FIELD ENGR & CONTRACTOR
 CONSTRUCT DITCH TO DRAIN ON W.S. ALL HALLOWS. TAKE ORIG & FINAL X-SECTIONS. PAYMENT TO BE AS C.Y. EXCAVATION.

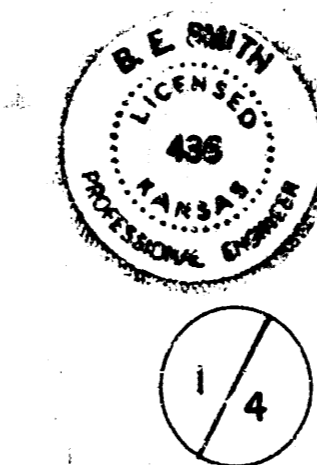


BASELINE = E. PL.

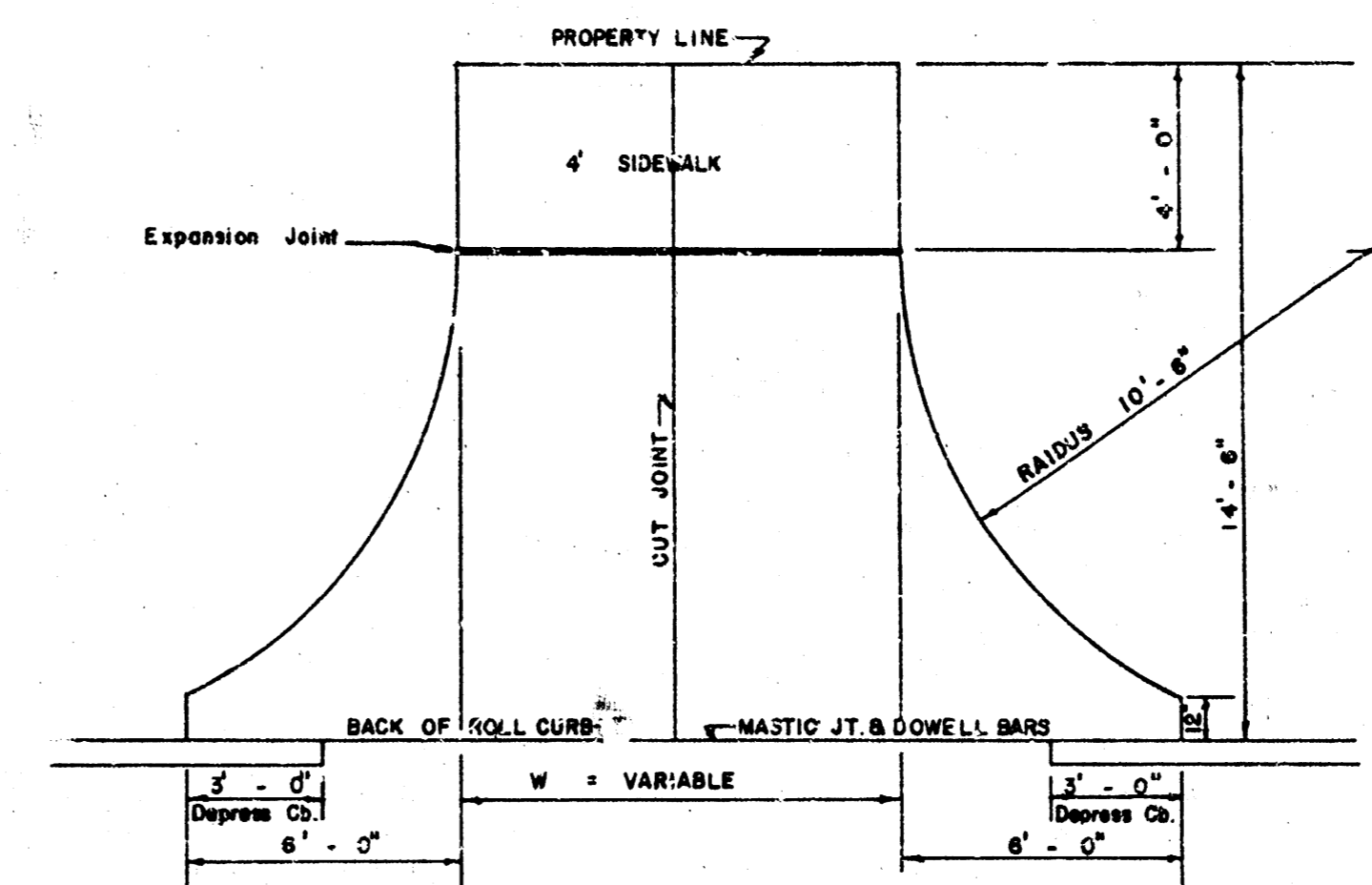
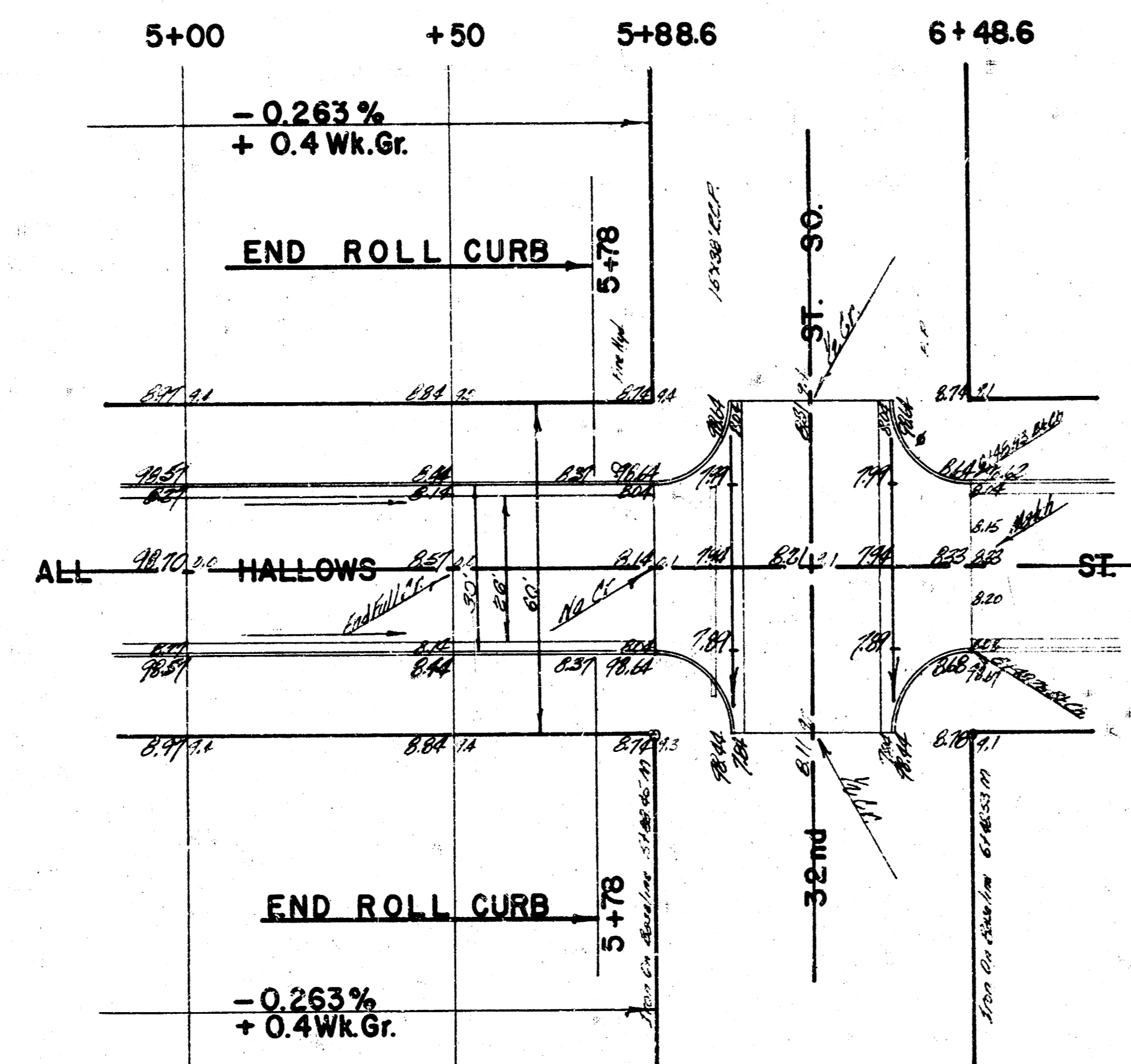
PROJ. C 18-63 EXCAVATION		
PROP	CITY	CITY COMP. FILL
1385.6 C.Y.	220.4 C.Y.	1.0 C.Y.
138.4 ±10%	22.0 ±10%	0.1 ±10%
TOTALS	1,522.0 C.Y.	242.4 C.Y.

PROJ. C 17-23 CITY EXCAV.	
265.5 C.Y.	26.6 ±10%
TOTAL	292.1 C.Y.
	60.0 C.Y. DITCH
	352.1 C.Y.

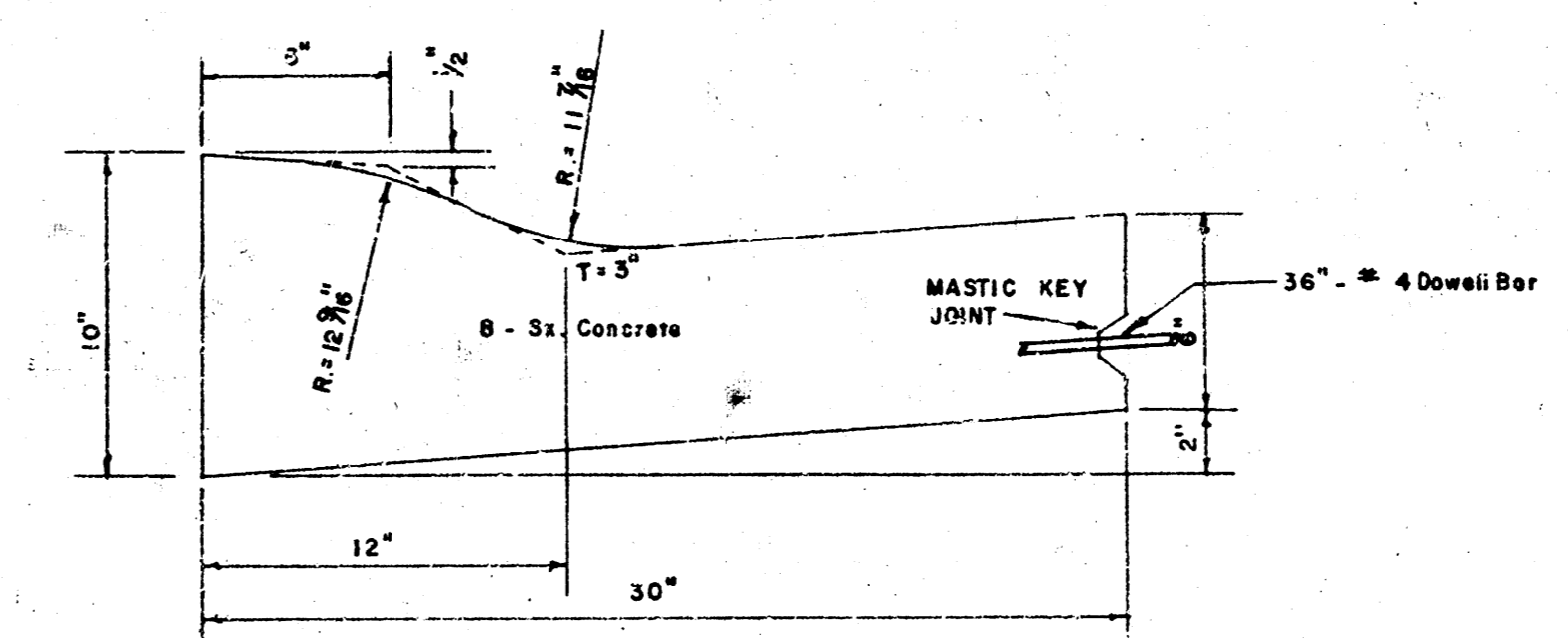
P.V.I.
 Elev. 99.40
 No V.C.



INTERSECTION ALL HALLOWS AVE & 33rd. ST. SO. A. C.		ALL HALLOWS AVE. N.L. 33rd. ST. SO. TO N.L. 32nd. ST. SO. 26-2-30A.C.
CITY OF B. E. SMITH DATE	WICHITA, KANSAS CITY ENGINEER PROJ. C 17-23	CITY OF WICHITA, KANSAS B. E. SMITH DATE APRIL 1967



DETAIL OF DRIVE APPROACH
BACK OF ROLL CURB



ROLL CURB DETAIL