

PAVING PLANS FOR
ALLEY BETWEEN BROADWAY AND TOPEKA
FROM ENGLISH TO WILLIAM
 IMPROVEMENTS

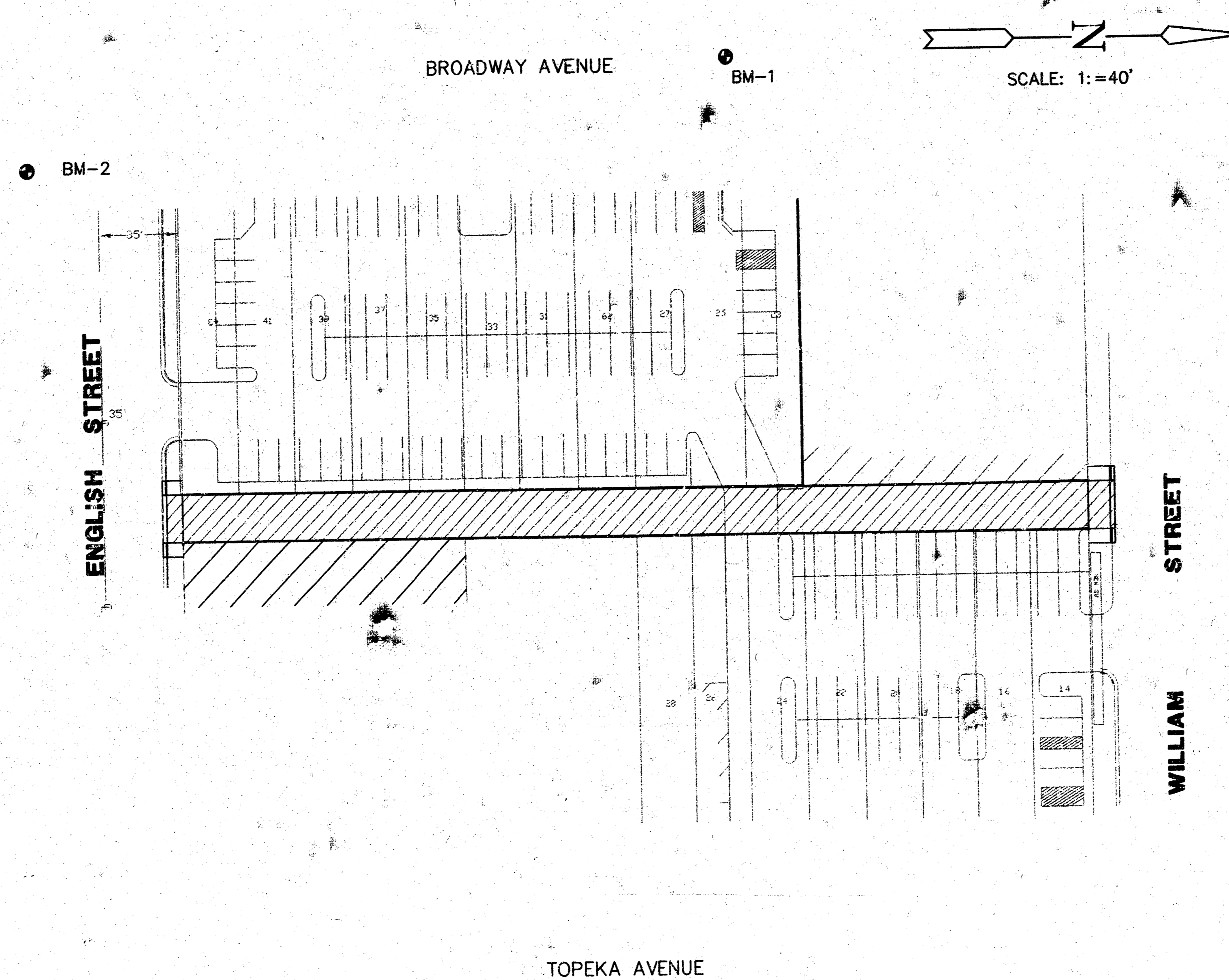
PROJECT NO.
472-82404

CITY OF WICHITA, KANSAS
 MICHAEL E. LINDEBAK, CITY ENGINEER

INDEX NO.
 762252

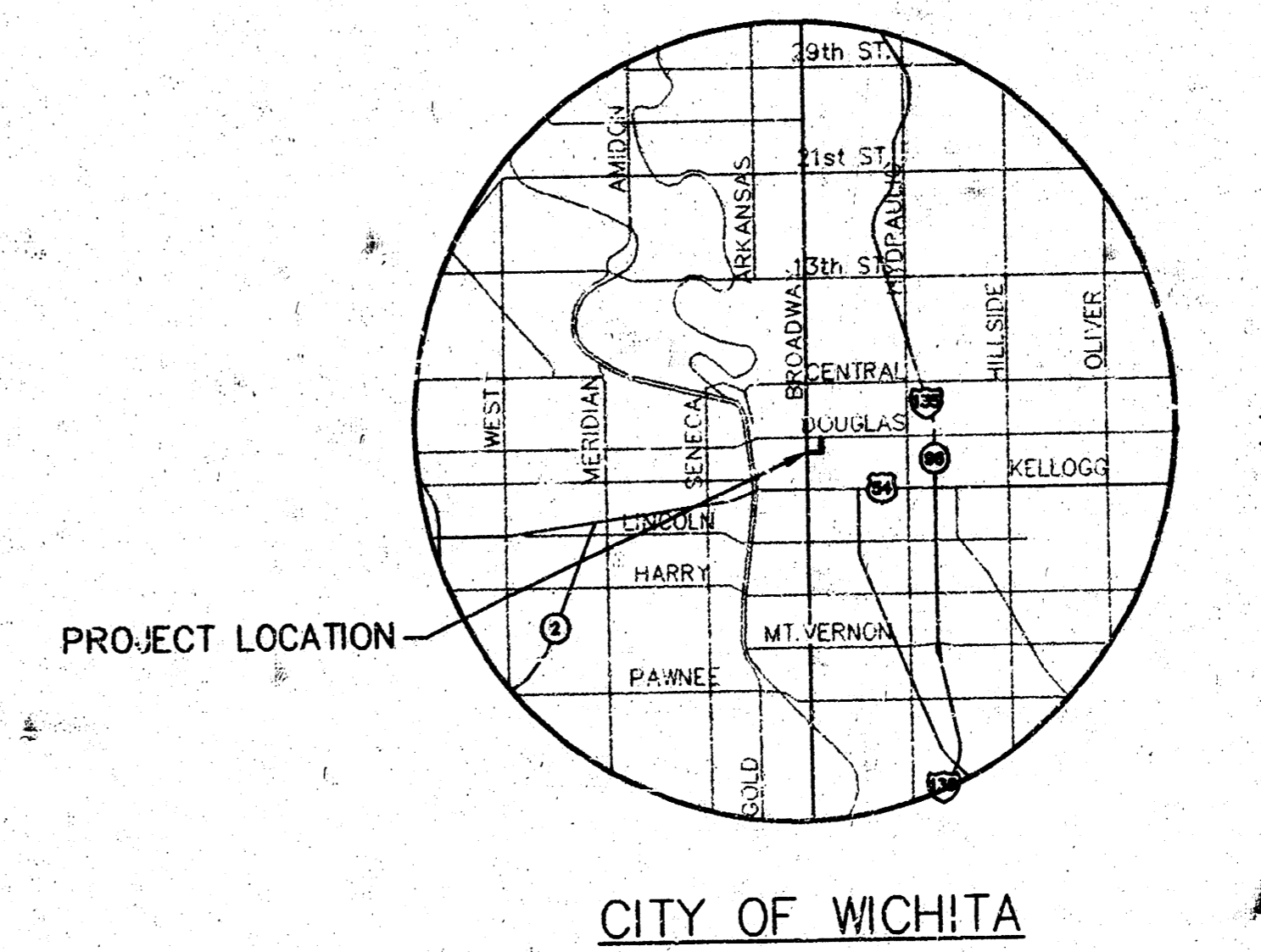
INDEX TO DRAWINGS

| SHEET No. | DESCRIPTION |
|-----------|---|
| 1 | TITLE SHEET |
| 2 | GENERAL NOTES AND JOINT DETAIL TYPICAL SECTION, PAVING & INTERSECTION DETAILS |
| 3 | ALLEY PAVING PLAN |
| 4 | TRAFFIC CONTROL PLAN |
| 5-6 | CROSS-SECTIONS |



BENCHMARKS

- BM #1 "□" CUT ON TOP OF CURB ON WEST SIDE OF BROADWAY, 33.8' N. & 10.7' E. OF THE N.E. COR. PETROLEUM BUILDING, 221 S. BROADWAY. ELEV. = 110.485
- BM #2 "□" CUT ON S.E. CORNER OF CONCRETE TRAFFIC SIGNAL POLE BASE ON S.E. CORNER OF BROADWAY AND ENGLISH. ELEV. = 110.53

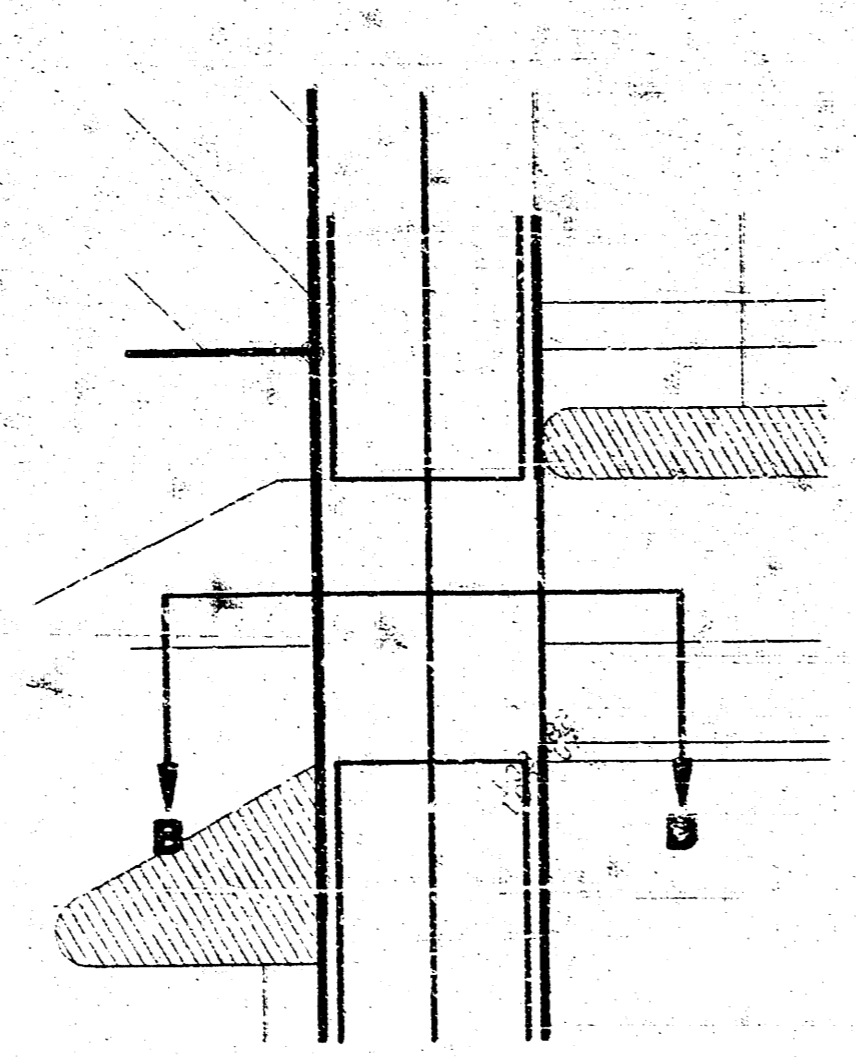
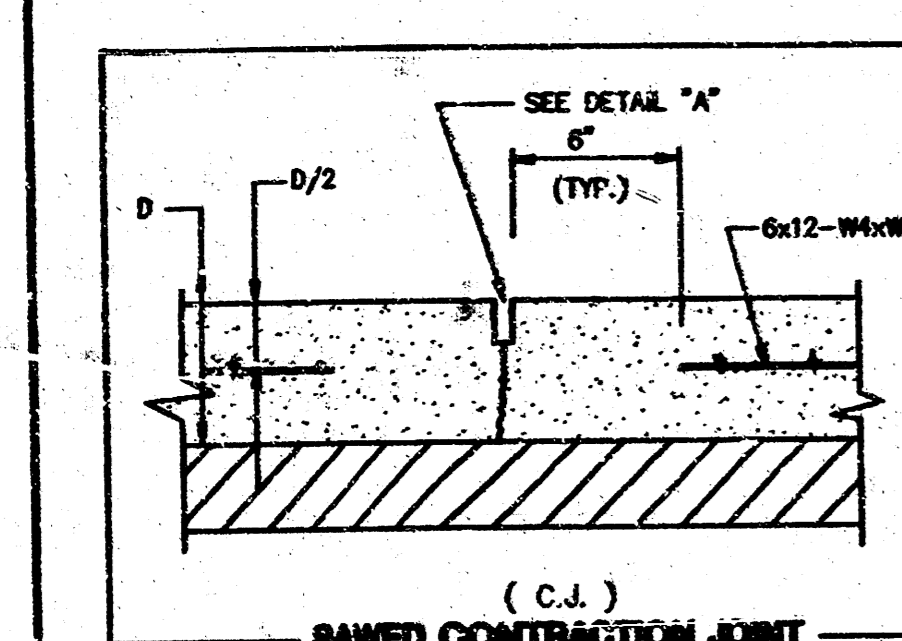
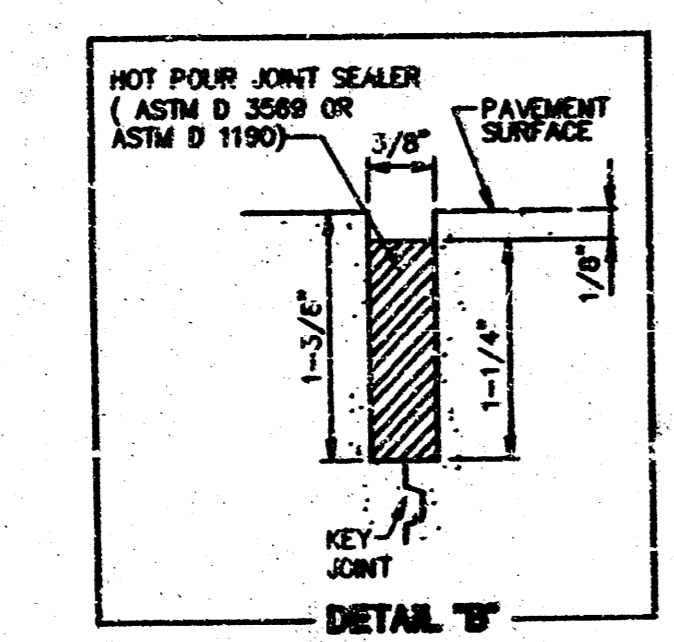
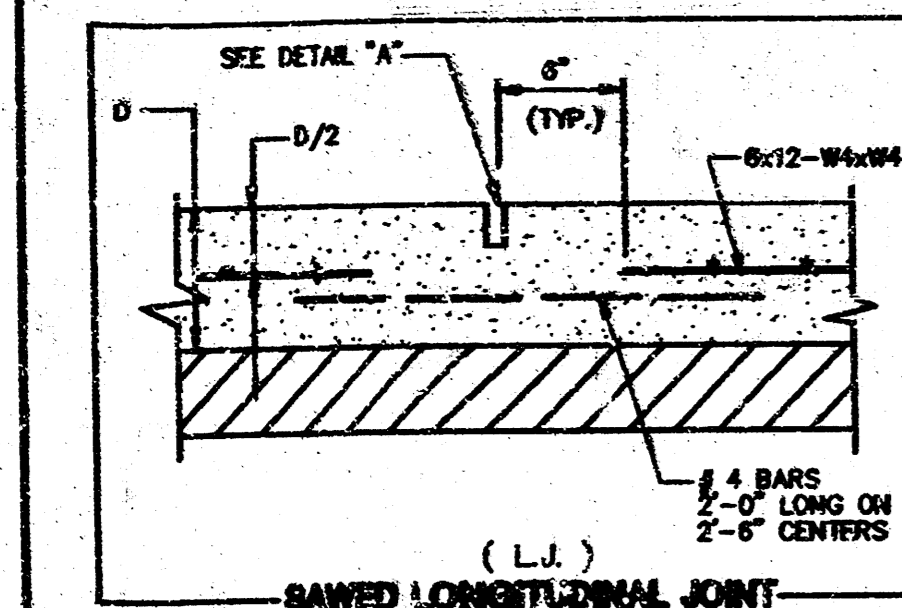
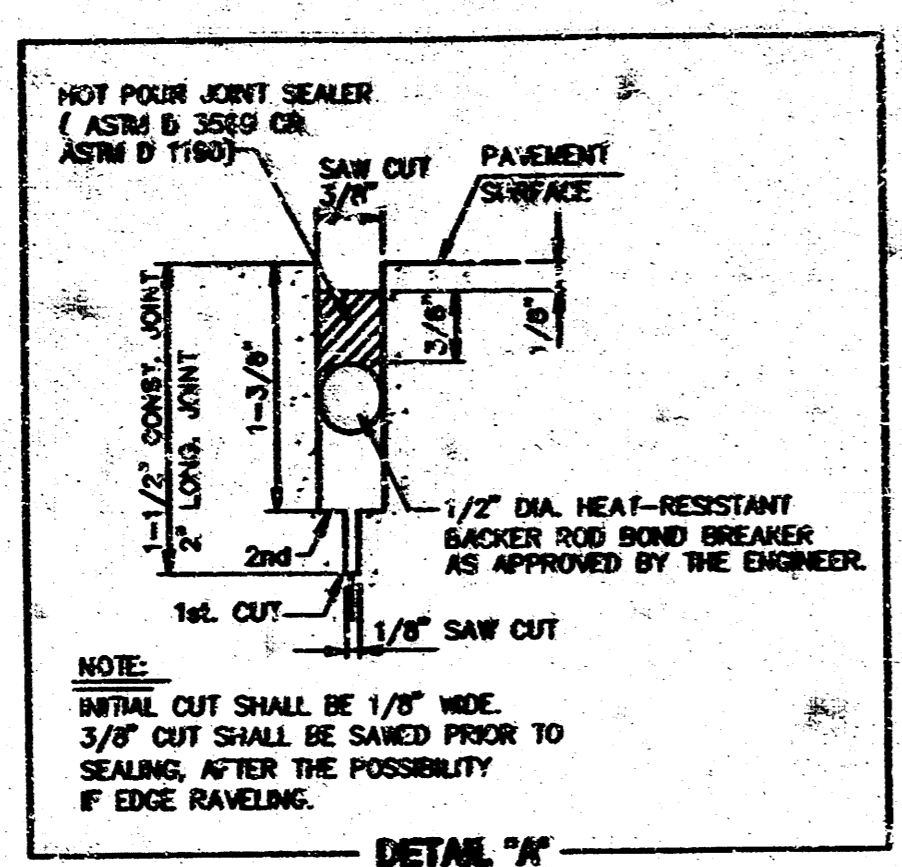
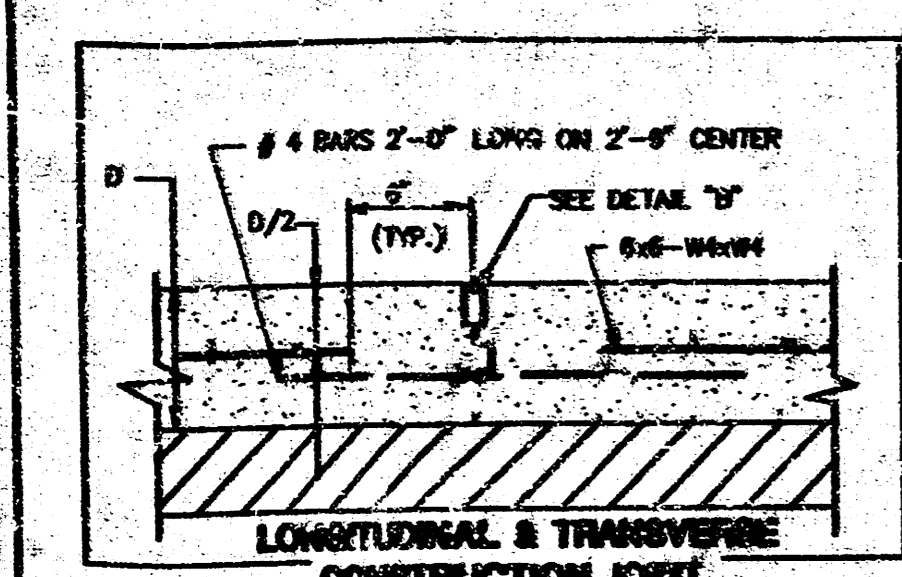


REVISED BY CITY OF WICHITA 6/99

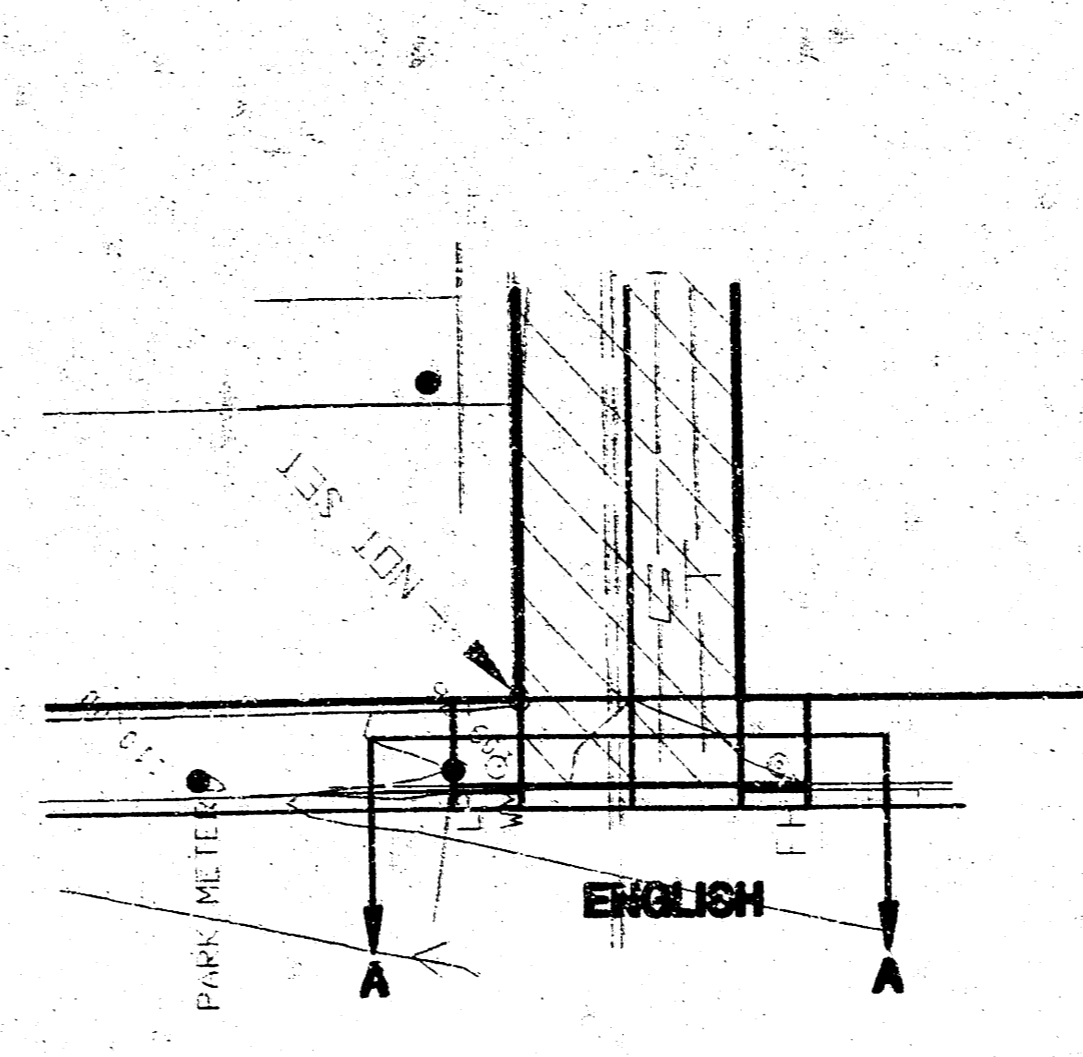
| | | |
|---|--------------------------------------|---|
| | ALLEY BETWEEN BROADWAY AND TOPEKA | Design PAF Drawn by PAF Checked by Date P.D. no. 93085 |
| | PAVING PLANS | Sheet 1 of 6 |
| MID-KANSAS ENGINEERING CONSULTANTS, INC. 3500 N. ROCK ROAD #800 WICHITA, KANSAS 67226 | | PH. 636-5568 |

GENERAL NOTES

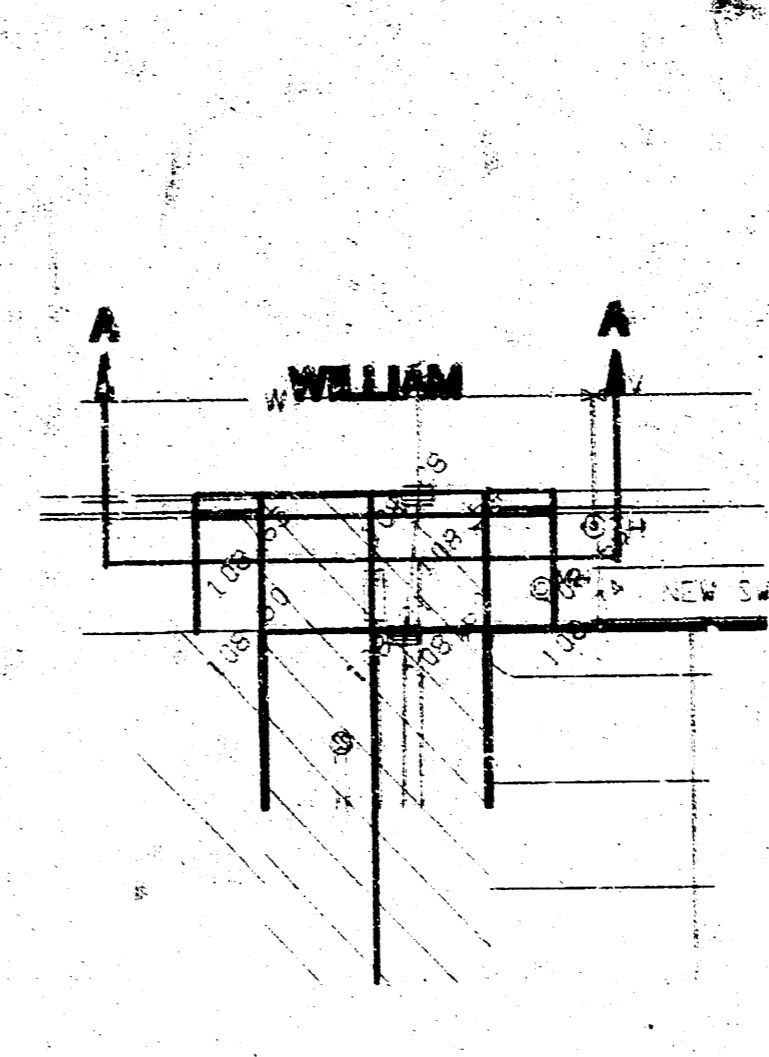
- CONTRACTOR WILL BE REQUIRED TO PROVIDE A MINIMUM ADVANCE NOTICE OF FORTY-EIGHT (48) HOURS TO UTILITY COMPANIES PRIOR TO STARTING ANY EXCAVATION AS FOLLOWS:
 KANSAS ONE-CALL 1-800-944-7233
 (OR 867-2473 LOCAL WICHITA)
- THE CONTRACTOR MUST NOTIFY THE FOLLOWING IN CASE OF EMERGENCY:
 SOUTHWESTERN BELL TELEPHONE COMPANY 1-371-2115
 CABLEVISION 282-4270 OR 283-2081
 KPL GAS SERVICE COMPANY 283-7291
 KANSAS GAS & ELECTRIC 284-1141
 CITY OF WICHITA WATER & SEWER 284-4964
 AMPLIA 282-8380
 WESTERN ACCESS TRANSMISSION SERVICE (BARRY BILLINGTON) 214-918-6787
 CITY OF WICHITA TRAFFIC MAINTENANCE (BILL LOWLAND) 288-4033
- THE CONTRACTOR SHALL GIVE ALL PROPERTY OWNERS AND/OR TENANTS OF DEVELOPED PROPERTY ADJACENT TO THE PROJECT LIMITS A MINIMUM OF TEN (10) DAYS ADVANCE NOTICE PRIOR TO START OF CONSTRUCTION.
- UTILITY SERVICE LINES, POLES, VALVE BOXES, METERS, AND ETCETERA ARE TO BE ADJUSTED AS NECESSARY BY OWNERS PRIOR TO CONSTRUCTION UNLESS THE PLANS SPECIFICALLY CALL FOR THEIR ADJUSTMENT BY THE CONTRACTOR OR UNLESS THE PLANS OR CONTRACT DOCUMENTS SPECIFICALLY IDENTIFY A UTILITY TO BE ADJUSTED BY ITS OWNER DURING CONSTRUCTION. EXISTING UTILITIES AND THEIR LOCATION AS SHOWN ON THE PLANS REPRESENT THE BEST INFORMATION OBTAINABLE FOR DESIGN. THE CONTRACTOR WILL BE REQUIRED TO WORK AROUND EXISTING UTILITIES WITHIN THE RIGHT-OF-WAY WHICH DO NOT CONFLICT WITH PROPOSED CONSTRUCTION.
- ALL ADJACENT BUILDINGS, STRUCTURES, PARKING LOTS, DRIVES, STREET PAVEMENTS, UTILITY LINES, UTILITY STRUCTURES AND APPURTENANCES OTHER THAN SHOWN FOR REPLACEMENT SHALL BE PROTECTED FROM DAMAGE DURING CONSTRUCTION OF THE PROJECT. DAMAGED ITEMS SHALL BE REMOVED AND REPLACED BY THE CONTRACTOR AT NO ADDITIONAL COST TO THE OWNER. SHEETING AND SHORING MAY BE REQUIRED TO PROTECT THE ITEMS MENTIONED ABOVE.
- A FULL DEPTH SAW CUT OF EXISTING SURFACE COURSES OR ONE-FOURTH THE DEPTH OF THE EXISTING TOTAL PAVEMENT THICKNESS SHALL BE PROVIDED AT LOCATIONS WHERE PROPOSED CONSTRUCTION ADJUTS AN EXISTING SURFACE COURSE OR PAVEMENT FOR WHICH PARTIAL REMOVAL OF THAT SURFACE OR PAVEMENT IS REQUIRED. SAWED JOINT TO FACILITATE REMOVAL WITHIN THREE (3) FEET OF EXISTING JOINTS WILL NOT BE PERMITTED AND FOR SUCH INSTANCES THE LIMITS OF REMOVAL SHALL EXTEND TO THE EXISTING JOINT. SUCH SAW CUTS WILL NOT BE PAID FOR DIRECTLY AND THIS COST SHALL BE CONSIDERED AS SUBSIDIARY TO THE REMOVAL OF THE SURFACE OR PAVEMENT.
- RUBBLE FROM THE REMOVAL OF PAVEMENT, MISCELLANEOUS STRUCTURES AND EXCESS EXCAVATION WHICH IS TO BE WASTED SHALL BE DISPOSED OF ON SITES TO BE PROVIDED BY THE CONTRACTOR. THESE SITES SHALL BE APPROVED BY THE ENGINEER AS TO SUITABILITY, APPEARANCE AND SITE LOCATION. LOCATIONS THAT, IN THE OPINION OF THE ENGINEER, WILL LEAVE AN UGLY APPEARANCE WILL NOT BE APPROVED. ALL DISPOSAL SITES MUST BE APPROVED BY THE KANSAS DEPARTMENT OF HEALTH AND ENVIRONMENT. MATERIAL EITHER STOCKPILED OR DISPOSED OF IN A FLOOD PLAIN WOULD REQUIRE A KANSAS STATE BOARD OF AGRICULTURE PERMIT. ANY MATERIAL DUMPED IN WATERS OF THE UNITED STATES OR WATERS IS SUBJECT TO THE CORPS OF ENGINEERS PERMITTING REGULATIONS. ANY MATERIAL BURIED OR STOCKPILED BEYOND APPROVED CONSTRUCTION LIMITS WOULD REQUIRE ADDITIONAL ARCHEOLOGICAL INVESTIGATIONS UNLESS BURIED IN A PREVIOUSLY APPROVED BORROW LOCATION.
- THE CITY OF WICHITA'S SEWER MAINTENANCE DIVISION OF THE DEPARTMENT OF WATER AND WATER POLLUTION CONTROL HAS TELEVIEWED SEWERS WITHIN THE LIMITS OF THE PROJECT. THE DIVISION SHALL BE NOTIFIED AND AFFORDED THE OPPORTUNITY TO RE-TELEVIEW SEWER LINES AFTER SURFACE CONSTRUCTION HAS BEEN COMPLETED AND PRIOR TO PAYMENT OF CONSTRUCTION TO DETERMINE IF SUCH SEWER LINES HAVE BEEN DAMAGED BY THE CONTRACTOR'S OPERATIONS. DAMAGED SEWER LINES WILL BE REPAIRED BY THE CONTRACTOR, AS DIRECTED BY THE ENGINEER, AT THE CONTRACTOR'S EXPENSE. TELEVISION LOGS ARE AVAILABLE FOR INSPECTION BY THE CONTRACTOR DURING NORMAL OFFICE HOURS AT THE SEWER MAINTENANCE DIVISION'S OFFICE AT CITY HALL.
- PROPERTIES WITHIN THE PROJECT LIMITS MAY HAVE PRIVATE IMPROVEMENTS, I.E., SPRINKLER SYSTEMS, FENCES, PLANTERS, SIGNS, ETC., IN PUBLIC RIGHT-OF-WAY WHICH COMPLY WITH NEW CONSTRUCTION. CONTRACTOR WILL BE REQUIRED TO REMOVE SUCH IMPROVEMENTS SHOULD THEY NOT BE REMOVED BY THEIR OWNER AT THE TIME OF CONSTRUCTION OF THE PROJECT. THE CONTRACTOR WILL BE REQUIRED TO SALVAGE ALL SPRINKLER HEADS, VALVES AND OTHER REUSABLE MATERIALS AND GIVE SUCH TO THEIR OWNER. IMPROVEMENTS NOT IN CONFLICT WITH NEW CONSTRUCTION SHALL BE PROTECTED FROM DAMAGE AND SHALL REMAIN IN PLACE. ALL WORK IN CONNECTION WITH REMOVAL OF THESE ITEMS SHALL BE CONSIDERED AS SUBSIDIARY TO "CLEARING RIGHT-OF-WAY AND SITE PREPARATION".
- TREES AND SHRUBS IN PUBLIC RIGHT-OF-WAY WHICH ARE IN DIRECT CONFLICT WITH PROPOSED NEW CONSTRUCTION SHALL BE REMOVED BY THE CONTRACTOR WITH THE ENGINEER'S APPROVAL. TREES AND SHRUBS WHICH ARE NOT IN DIRECT CONFLICT WITH PROPOSED NEW CONSTRUCTION SHALL BE SAVED AND PROTECTED FROM DAMAGE.
- THE CONTRACTOR SHALL BE RESPONSIBLE FOR PRESERVING PROPERTY IRONS. THE CONTRACTOR WILL BE REQUIRED TO RE-ESTABLISH ANY PROPERTY IRONS WHICH ARE DAMAGED OR DESTROYED BY HIS CONSTRUCTION OPERATIONS. SUCH IRONS SHALL BE RE-ESTABLISHED BY A REGISTERED LAND SURVEYOR IN ACCORDANCE WITH STATE LAWS.
- THE CONTRACTOR SHALL ADJUST WATER VALVE AND FIRE HYDRANTS AS DIRECTED BY THE ENGINEER. THE WATER DEPARTMENT SHALL FIELD LOCATE WATER VALVES ONE TIME DURING CONSTRUCTION WHEN REQUESTED BY THE CONTRACTOR. IT SHALL BE THE CONTRACTOR'S RESPONSIBILITY TO PRESERVE SUCH FIELD LOCATIONS DURING THE CONSTRUCTION PROCESS. WATER VALVES OR FIRE HYDRANTS DAMAGED DURING CONSTRUCTION SHALL BE REPAIRED BY THE CONTRACTOR AT HIS OWN EXPENSE.
- THE CONTRACTOR SHALL INSTALL TYPE III BARRICADES AT THE ENTRANCES TO THE ALLEY FROM ENGLISH AND WILLIAM STREETS. ALL TYPE III BARRICADES PLACED ACROSS THE ALLEY SHALL BE SATISFABLY DISTRIBUTED ACROSS THE ALLEY AND PROTECTED AT NIGHT BY APPROVED YELLOW FLASHING LIGHTS. THE LIGHTS SHALL BE KEPT BURNING FROM SUNSET TO SUNRISE. COST OF TYPE III BARRICADES SHALL BE SUBSIDIARY TO THE BID ITEM FOR TRAFFIC CONTROL. NOTIFY THE CITY'S TRAFFIC MAINTENANCE DEPARTMENT 14 DAYS PRIOR TO THE START OF CONSTRUCTION. ALL SIGNS, BARRICADES AND TRAFFIC CONTROL DEVICES SHALL COMPLY WITH THE CURRENT M.U.T.C.D.
- STREET SIGNS, STREET FURNITURE, ETCETERA REMOVED BY THE CONTRACTOR SHALL BE TAKEN TO THE CITY YARD FOR STORAGE.
- INSTALL NEW STANDARD MANHOLE FRAMES AND COVERS ON ALL EXISTING STORM WATER AND SANITARY SEWER MANHOLES LOCATED IN NEW PAVEMENT. OLD FRAMES AND COVERS SHALL BE TAKEN TO THE CITY YARD FOR SALVAGE.
- ALL ELEVATIONS SHOWN ARE CITY DATUM. CITY DATUM = USGS MSL - 1187.40
- NOTIFY KGAE (BUDDY WARD, 261-6771 OR JAMES SCHMIDT, 291-6249) 48 HOURS PRIOR TO ANY WORK REQUIRING ACCESS TO KGAE VAULTS, MANHOLES, AND POWER SUPPLY LOCATIONS.



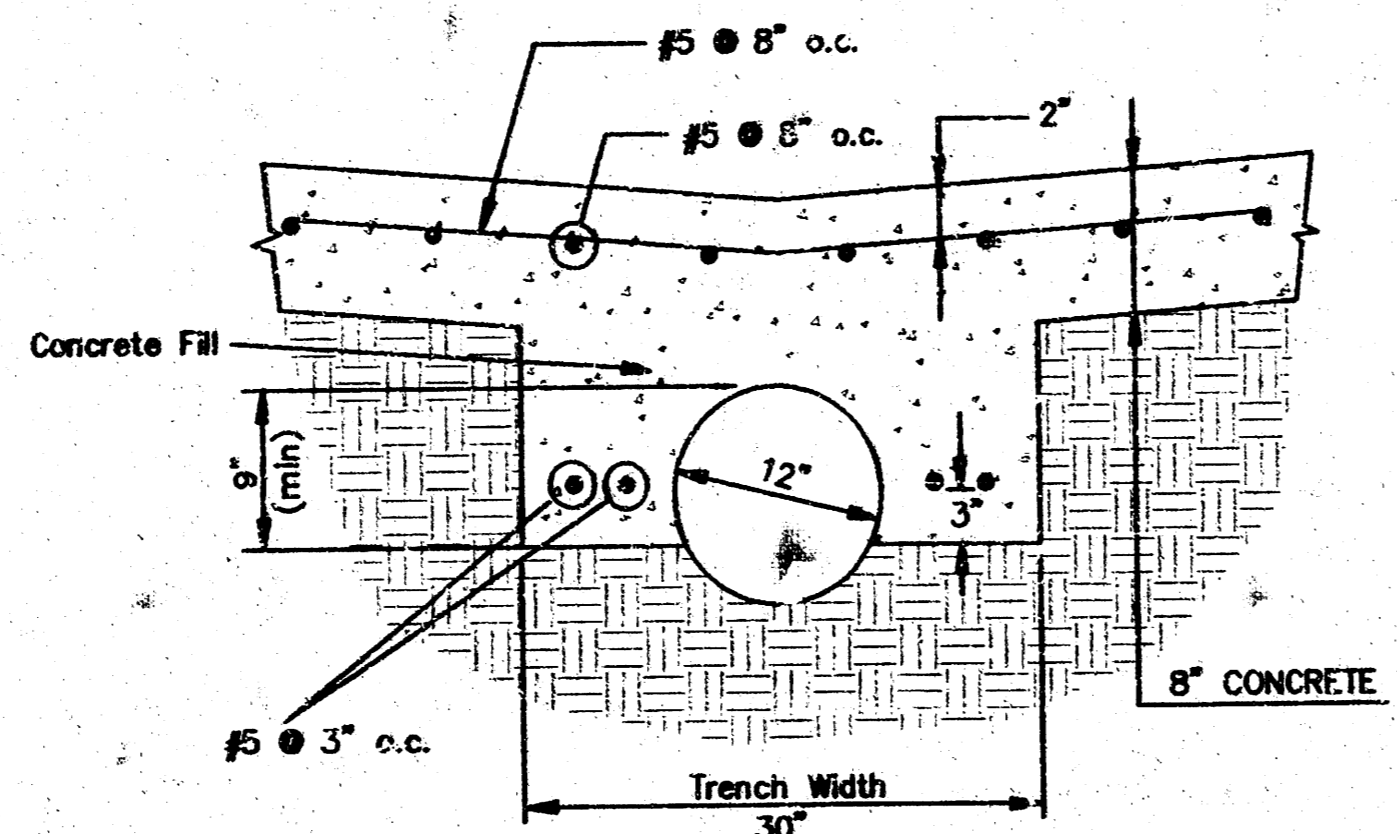
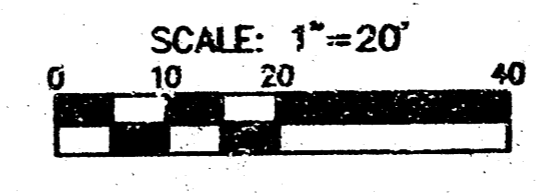
PAVING DETAIL FOR ALLEY & CONC. DRIVE BETWEEN PARKING LOTS



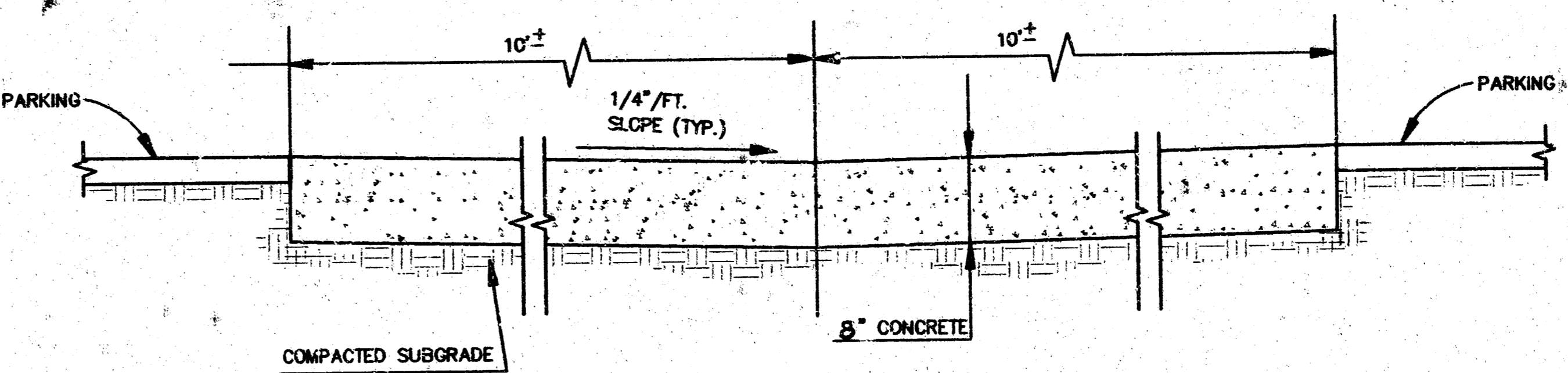
PAVING DETAIL FOR ALLEY & SOUTH INTERSECTION WITH ENGLISH STREET



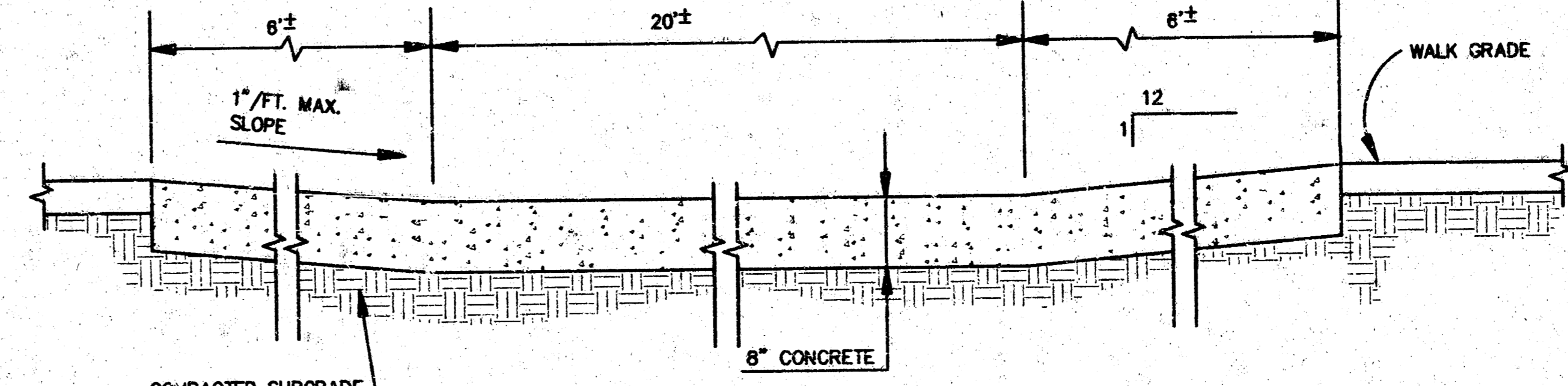
PAVING DETAIL FOR ALLEY & NORTH INTERSECTION WITH WILLIAM STREET



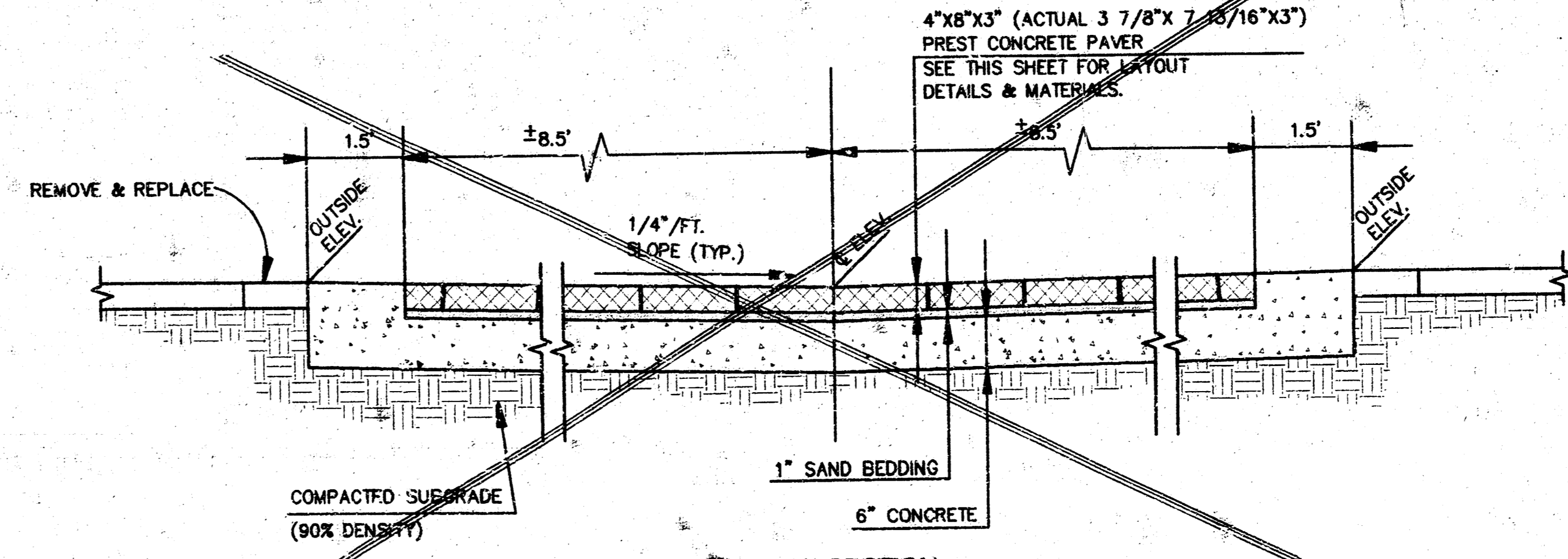
STORM SEWER ENCASUREMENT DETAIL



SECTION "B - B"

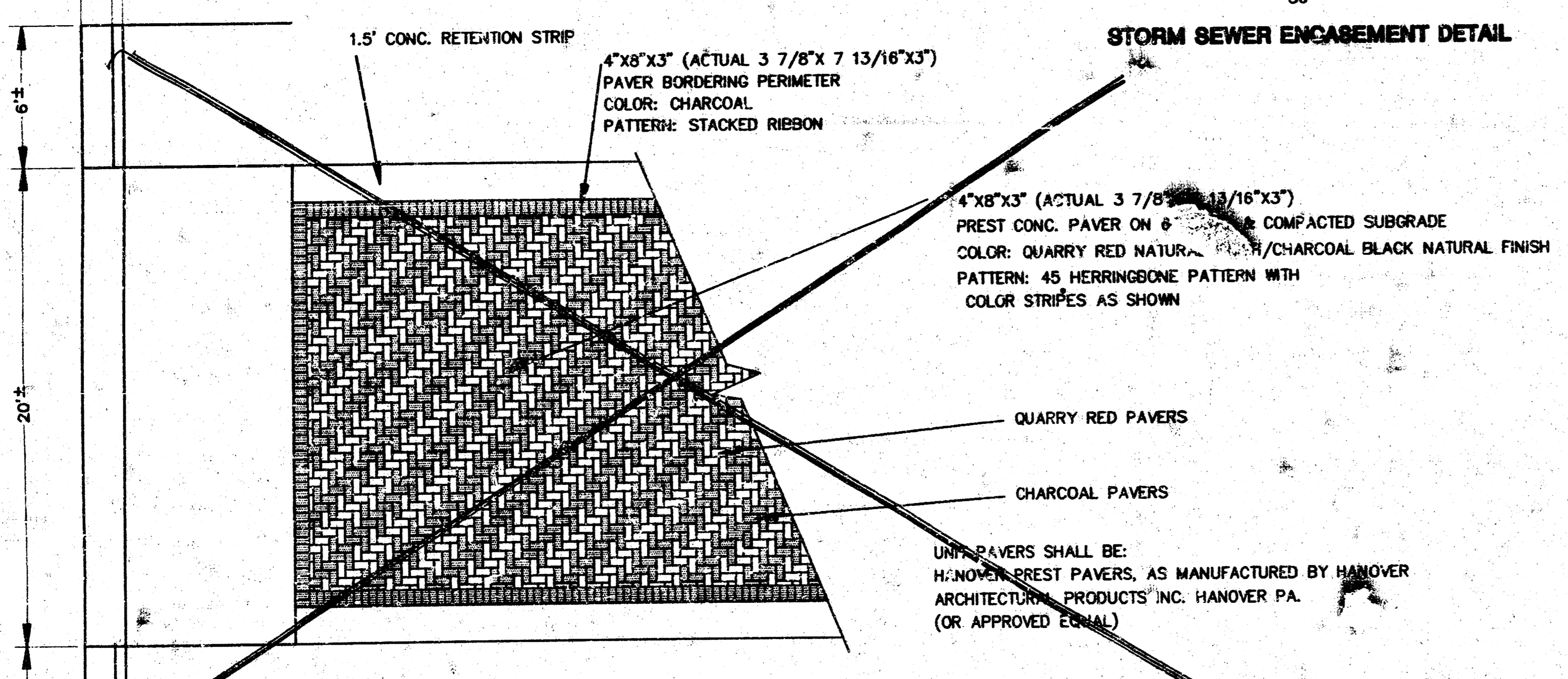


SECTION "A - A"



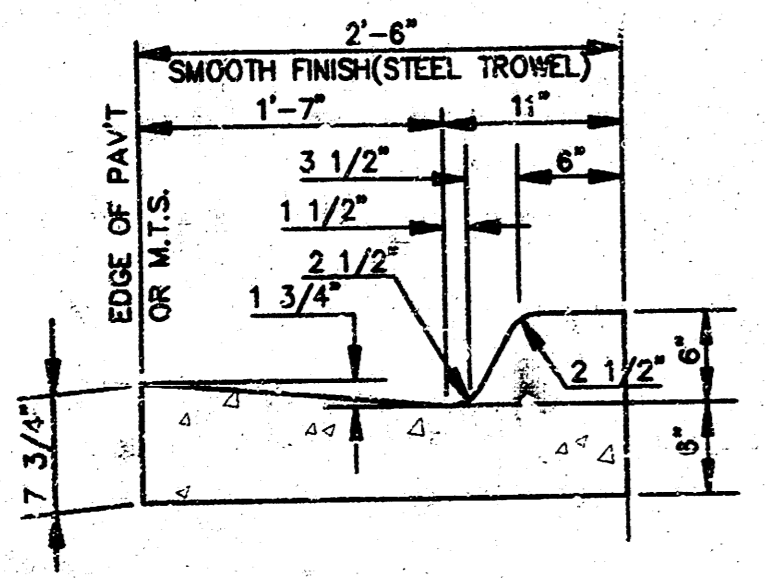
TYPICAL SECTION

NOTE: THE ALTERNATE SHALL BE 12" CONCRETE PAVEMENT ON COMPACTED SUBGRADE



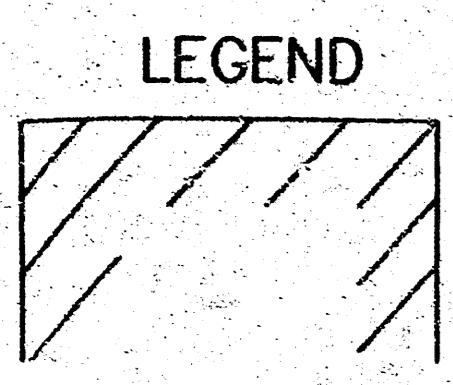
PAVER LAY-OUT DETAIL

SCALE: 1" = 5'

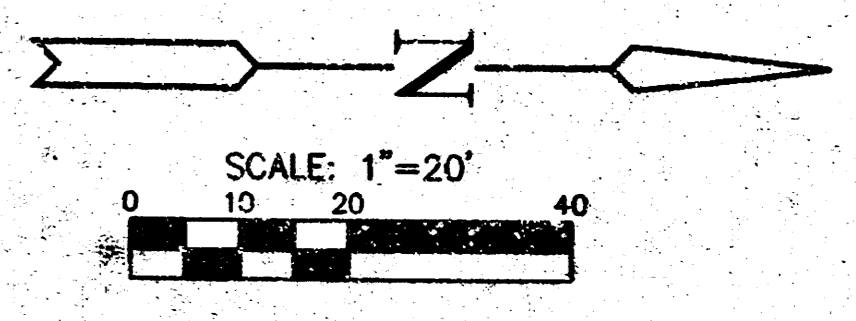


COMBINED CURB & GUTTER-TYPE 1 (2'-6" WIDE)

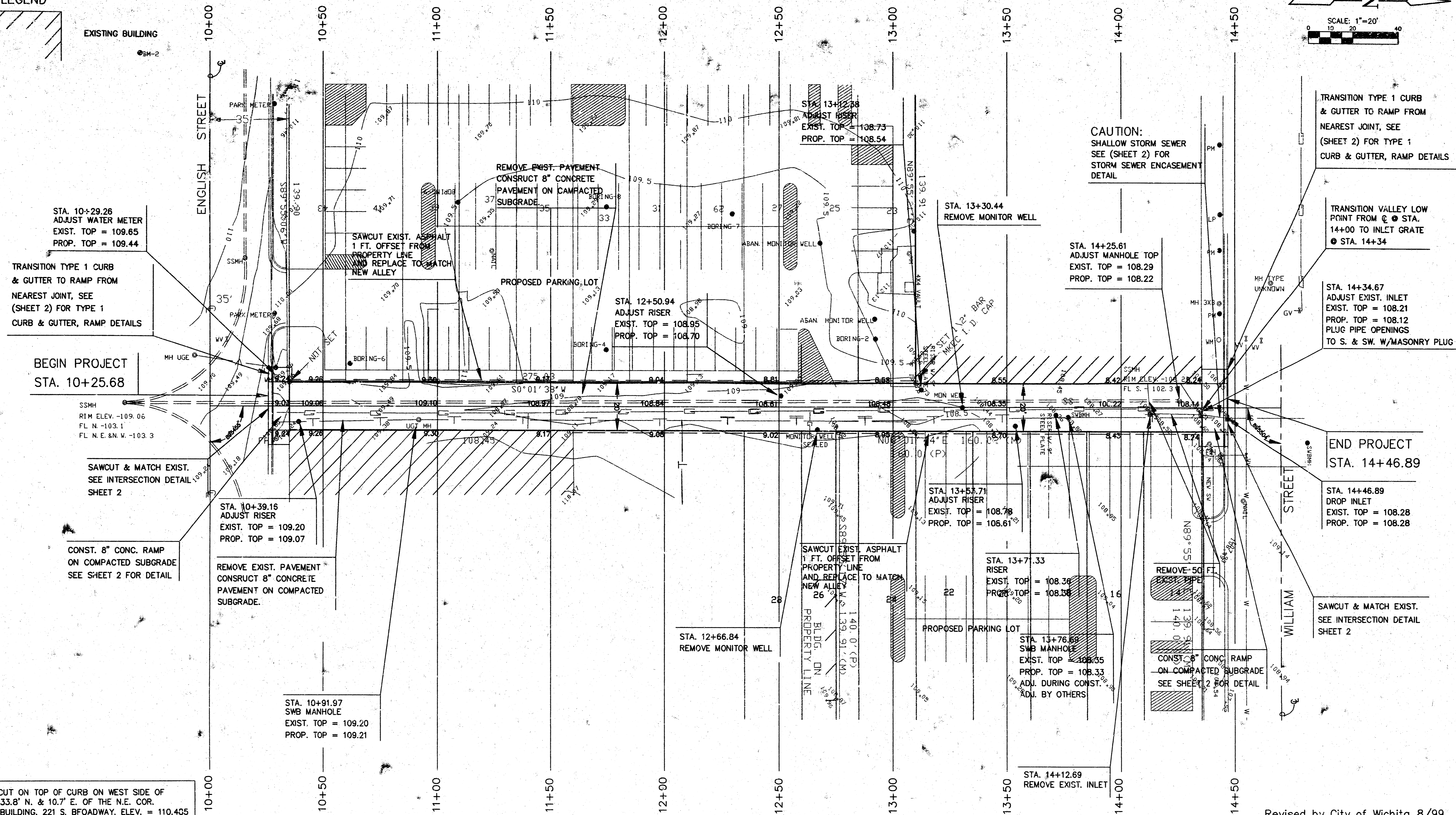
| | | |
|---|------------------------------------|--|
| | ALLIS HOTEL ALLEY | Design PAF Drawn L/P PAF Checked by Date 3/13/95 Job no. 93085 |
| | GENERAL NOTES & DETAILS | Sheet 2 of 6 |
| MID-KANSAS ENGINEERING CONSULTANTS INC. 3500 NORTH ROCK ROAD BUILDING #800 WICHITA, KANSAS 67226 | | (316) 636-5566 |



EXISTING BUILDING



SCALE: 1"=20'



STA. 10+29.26
ADJUST WATER METER
EXIST. TOP = 109.65
PROP. TOP = 109.44

TRANSITION TYPE 1 CURB
& GUTTER TO RAMP FROM
NEAREST JOINT, SEE
(SHEET 2) FOR TYPE 1
CURB & GUTTER, RAMP DETAILS

BEGIN PROJECT
STA. 10+25.68

SSMH
RIM ELEV. -109.06
FL N. -103.1
FL N.E. & N.W. -103.3

SAWCUT & MATCH EXIST.
SEE INTERSECTION DETAIL
SHEET 2

CONST. 8" CONC. RAMP
ON COMPACTED SUBGRADE
SEE SHEET 2 FOR DETAIL

STA. 10+39.16
ADJUST RISER
EXIST. TOP = 109.20
PROP. TOP = 109.07

REMOVE EXIST. PAVEMENT
CONSTRUCT 8" CONCRETE
PAVEMENT ON COMPACTED
SUBGRADE.

STA. 10+91.97
SWB MANHOLE
EXIST. TOP = 109.20
PROP. TOP = 109.21

REMOVE EXIST. PAVEMENT
CONSTRUCT 8" CONCRETE
PAVEMENT ON COMPACTED
SUBGRADE.

SAWCUT EXIST. ASPHALT
1 FT. OFFSET FROM
PROPERTY LINE
AND REPLACE TO MATCH
NEW ALLEY

PROPOSED PARKING LOT

STA. 12+50.94
ADJUST RISER
EXIST. TOP = 108.95
PROP. TOP = 108.70

STA. 12+66.84
REMOVE MONITOR WELL

SAWCUT EXIST. ASPHALT
1 FT. OFFSET FROM
PROPERTY LINE
AND REPLACE TO MATCH
NEW ALLEY

PROPOSED PARKING LOT

STA. 13+53.71
ADJUST RISER
EXIST. TOP = 108.78
PROP. TOP = 108.61

STA. 13+71.33
RISER
EXIST. TOP = 108.36
PROP. TOP = 108.38

STA. 13+76.69
SWB MANHOLE
EXIST. TOP = 108.35
PROP. TOP = 108.33
ADJ. DURING CONST.
ADJ. BY OTHERS

STA. 14+12.69
REMOVE EXIST. INLET

CAUTION:
SHALLOW STORM SEWER
SEE (SHEET 2) FOR
STORM SEWER ENCASEMENT
DETAIL

STA. 14+25.61
ADJUST MANHOLE TOP
EXIST. TOP = 108.29
PROP. TOP = 108.22

TRANSITION TYPE 1 CURB
& GUTTER TO RAMP FROM
NEAREST JOINT, SEE
(SHEET 2) FOR TYPE 1
CURB & GUTTER, RAMP DETAILS

TRANSITION VALLEY LOW
POINT FROM C @ STA.
14+00 TO INLET GRATE
@ STA. 14+34

STA. 14+34.67
ADJUST EXIST. INLET
EXIST. TOP = 108.21
PROP. TOP = 108.12
PLUG PIPE OPENINGS
TO S. & SW. W/MASONRY PLUG

END PROJECT
STA. 14+46.89

STA. 14+46.89
DROP INLET
EXIST. TOP = 108.28
PROP. TOP = 108.28

SAWCUT & MATCH EXIST.
SEE INTERSECTION DETAIL
SHEET 2

BM-1 "□" CUT ON TOP OF CURB ON WEST SIDE OF
BROADWAY, 33.8' N. & 10.7' E. OF THE N.E. COR.
PETROLEUM BUILDING, 221 S. BFOADWAY. ELEV. = 110.405

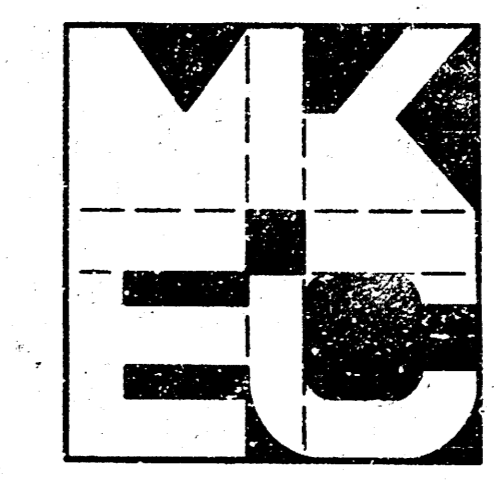
BM-2 "□" CUT ON S.E. CORNER OF CONCRETE TRAFFIC
SIGNAL POLE BASE ON S.E. CORNER OF BROADWAY
AND ENGLISH. ELEV. = 110.53

| MANHOLE ADJUSTMENTS | | | |
|---------------------|---------|--------------|-------------|
| STATION | OFFSET | EXIST. ELEV. | PROP. ELEV. |
| 14+25.61 | 2.9 LT. | 108.29 | 108.22 |
| | | | |
| | | | |

| WATER METER ADJUSTMENTS | | | |
|-------------------------|----------|--------------|-------------|
| STATION | OFFSET | EXIST. ELEV. | PROP. ELEV. |
| 10+29.26 | 12.0 LT. | 109.65 | 109.44 |
| | | | |
| | | | |

| RISER ADJUSTMENTS | | | |
|-------------------|---------|--------------|-------------|
| STATION | OFFSET | EXIST. ELEV. | PROP. ELEV. |
| 10+39.16 | 6.6 RT. | 109.20 | 109.07 |
| 12+50.94 | 4.6 LT. | 108.95 | 108.70 |
| 13+12.38 | 7.3 LT. | 108.73 | 108.54 |
| 13+53.71 | 7.9 RT. | 108.78 | 108.61 |
| | | | |

| INLET TOP ADJUSTMENTS | | | |
|-----------------------|---------|--------------|-------------|
| STATION | OFFSET | EXIST. ELEV. | PROP. ELEV. |
| 14+34.67 | 2.9 RT. | 108.21 | 108.12 |
| | | | |
| | | | |



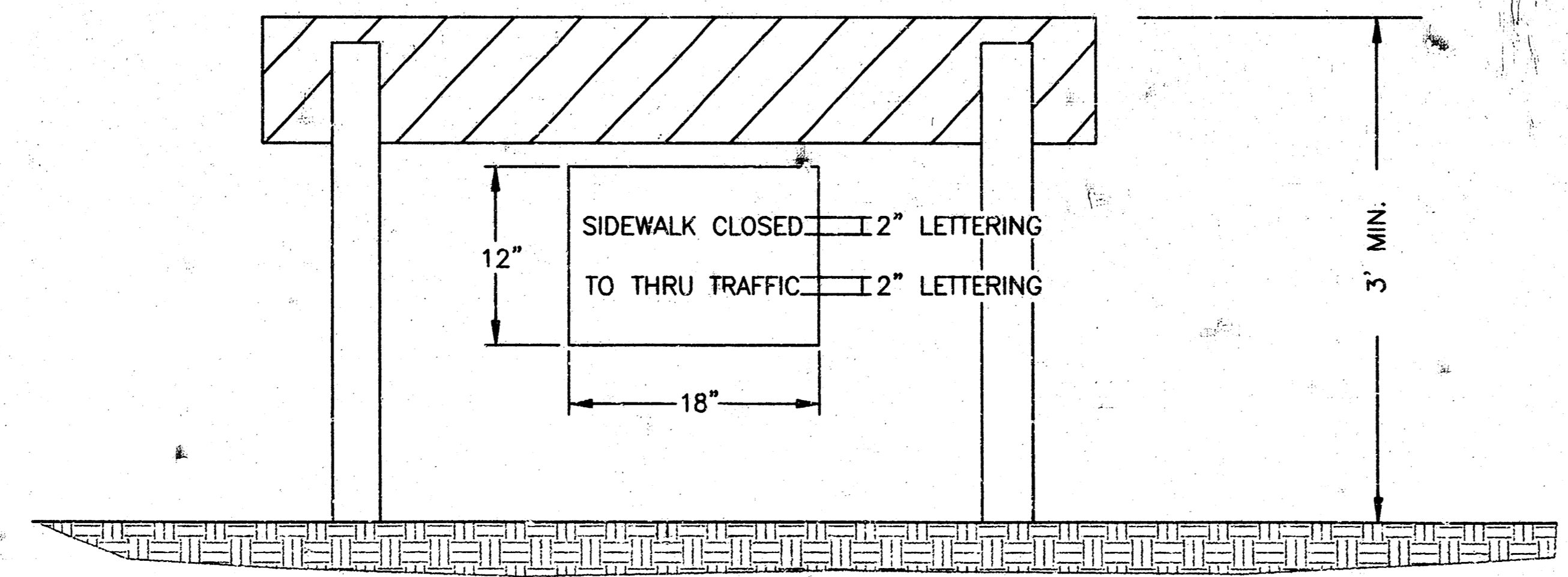
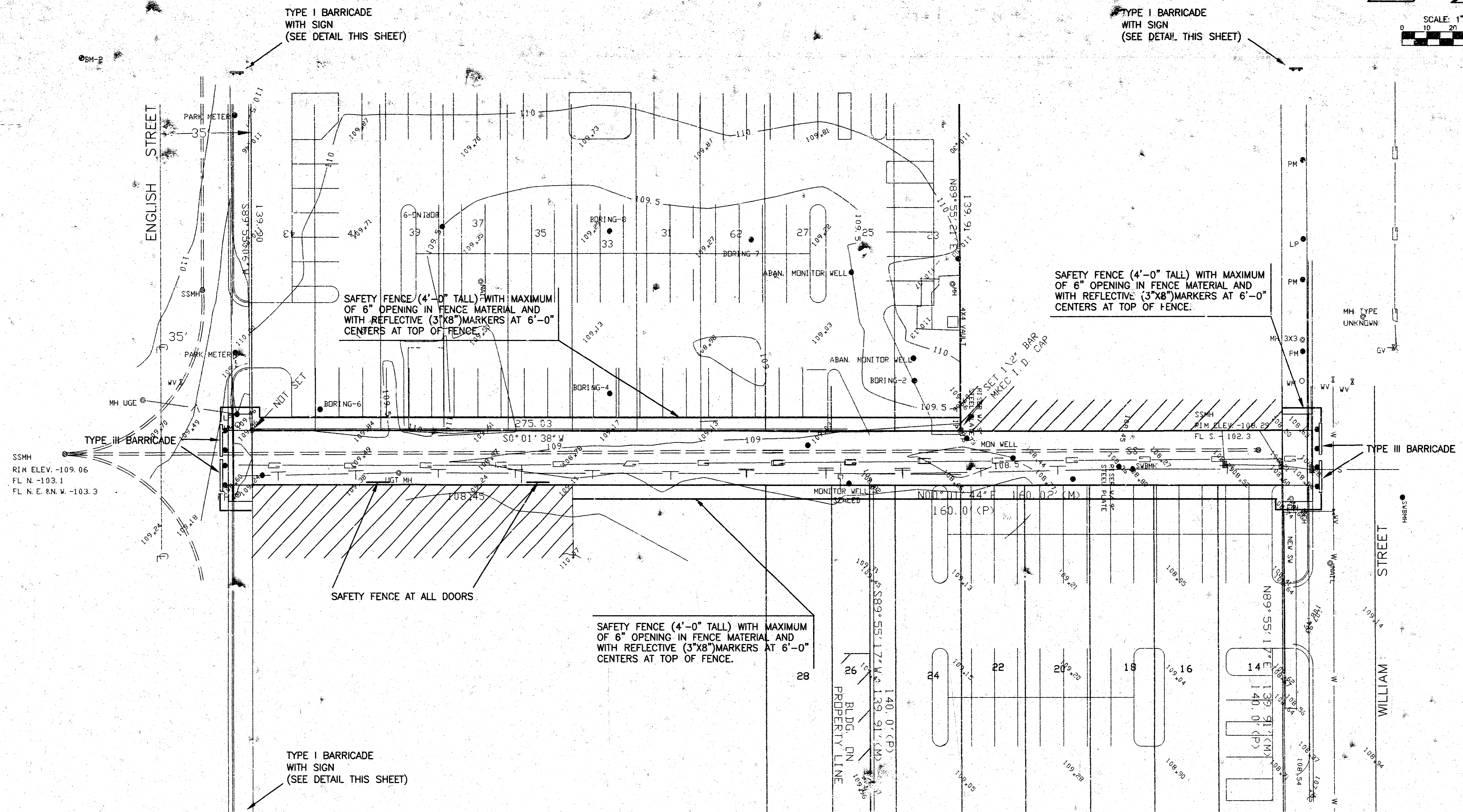
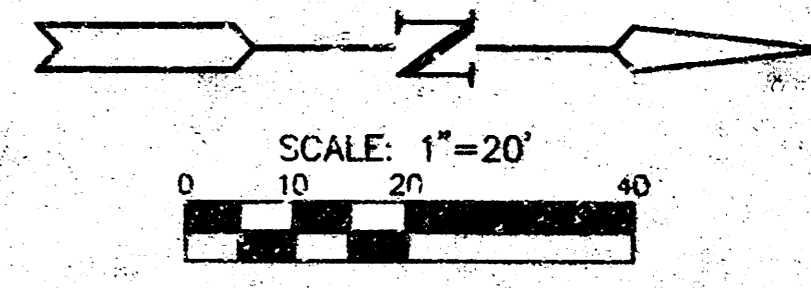
Revised by City of Wichita 8/99

ALLIS HOTEL ALLEY
PAVING PLAN
STA. 10+00 TO 14+46.89

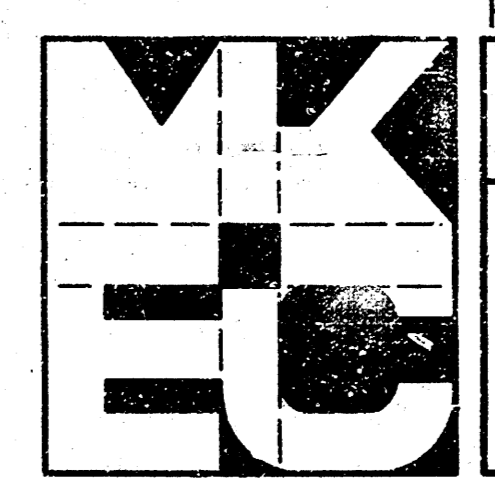
MID-KANSAS ENGINEERING CONSULTANTS INC.
3500 NORTH ROCK ROAD
BUILDING #800
WICHITA, KANSAS 67226

(316) 636-5566

| | |
|------------|-------|
| Design | PAF |
| Drawn by | PAF |
| Checked by | |
| Date | |
| Job no. | 93085 |
| Sheet | 3 |
| of | 6 |



TYPE I BARRICADE SIGN DETAIL NOT TO SCALE



Revised by City of Wichita 8/99

ALLIS HOTEL ALLEY

TRAFFIC CONTROL

MID-KANSAS ENGINEERING CONSULTANTS INC.
3500 NORTH ROCK ROAD
BUILDING #800
WICHITA, KANSAS 67226 (316) 636-5566

| | |
|------------|-------|
| Design | KJS |
| Drawn by | PAF |
| Checked by | |
| Date | |
| Job no. | 93085 |
| Sheet | 4 |
| of | 6 |

CITY OF WICHITA
ALLIS HOTEL ALLEY

