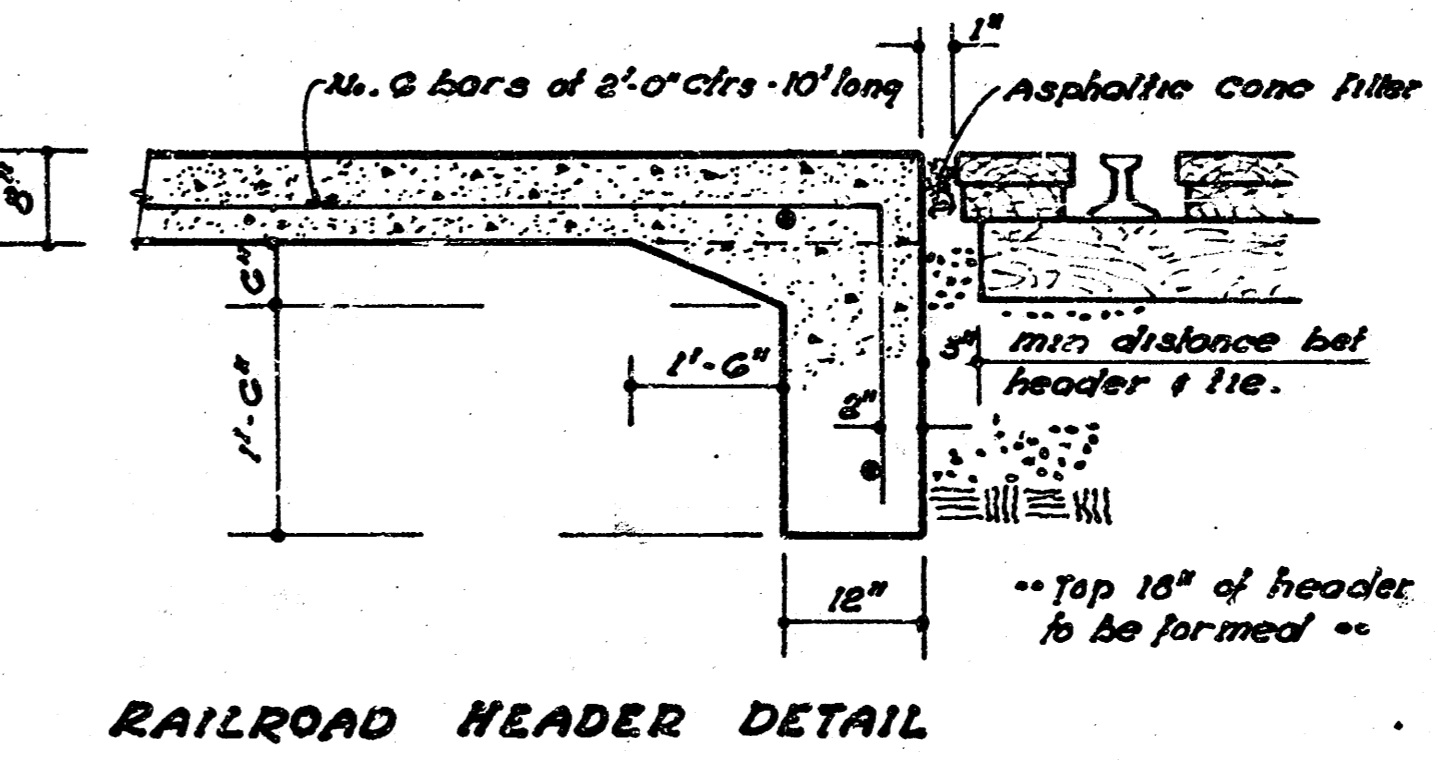
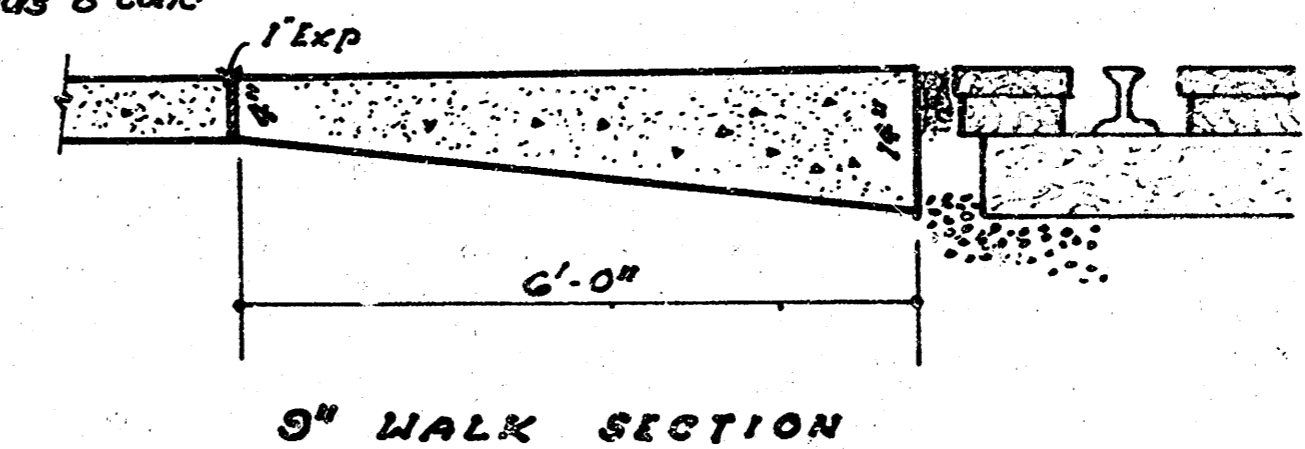
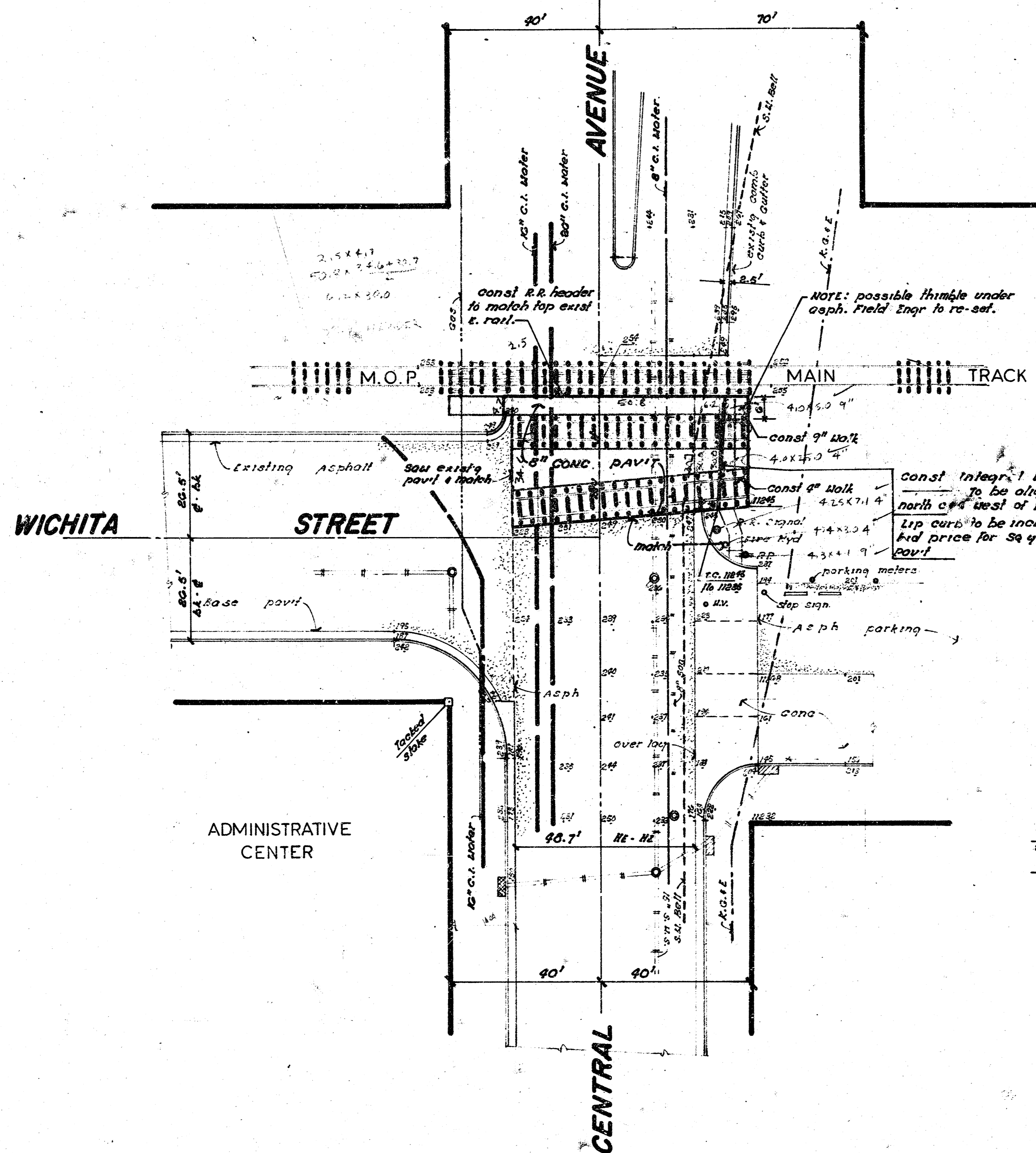


S.M.: 1135 S.E. cor conc base R.R. Signal
 Box N.W. cor CENTRAL and WICHITA STREET.



NOTE: All fill necessary to complete construction is to be considered as subsidiary to other bid items.

NOTE: Steel pattern for 6\"/>



RE-CONSTRUCTION — CENTRAL & WICHITA INTERSECTION at M.O.P. TRACKS.

CITY OF WICHITA, KANSAS
 (8" Asph Conc Pavement)
 R.W. LINN CITY ENGINEER
 DATE _____ Proj No. DAKW 703037

Survey 1/24/45
 Plans drawn
 Eac
 Checked