

WICHITA KELLOGG AND RIDGE ROAD INTERCHANGE

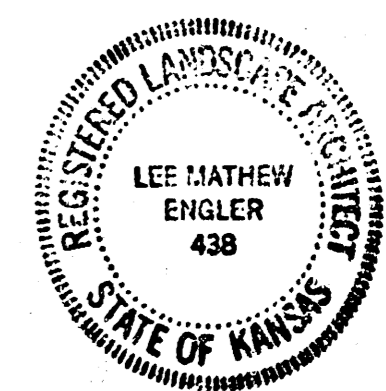
CONSTRUCTION DRAWINGS FOR
LANDSCAPE PLANTING AND IRRIGATION

PREPARED FOR:
THE CITY OF WICHITA
INDEX #700104

Site
Site
Site
520 S. Holland, Suite 410
Wichita, Kansas 67209
(316) 771-1000
Planning Associates
Associates
Associates

DRAWING INDEX 12-22-89

| <u>SHEET</u> | <u>SHEET TITLE</u> |
|--------------|----------------------------|
| PH | PHASING KEY PLAN |
| L1 - L5 | LANDSCAPE PLANTING PLANS |
| K-1 | SITE IRRIGATION KEY PLAN |
| I1 - I5 | LANDSCAPE IRRIGATION PLANS |



①

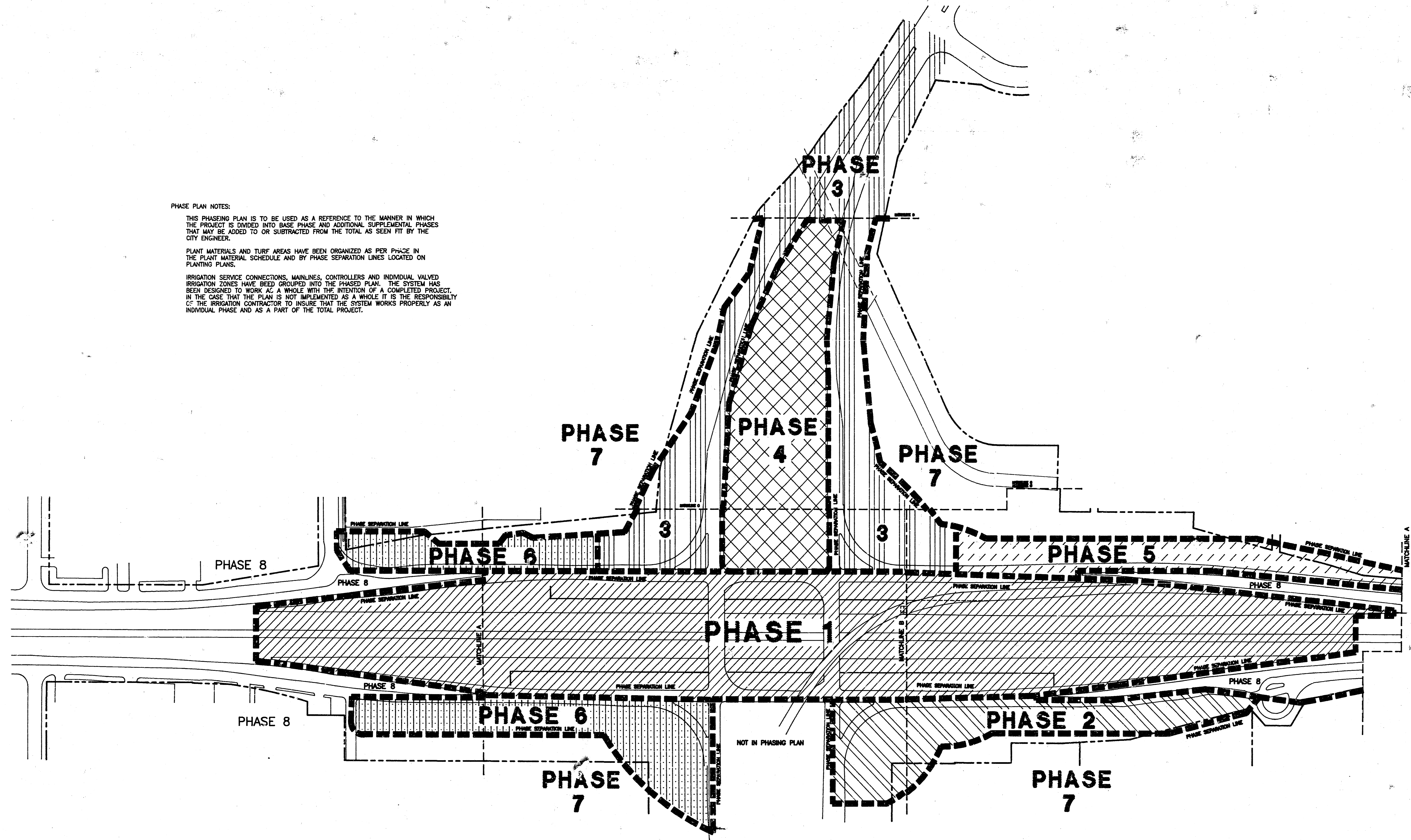
FILMED FROM THE BEST
AVAILABLE COPY

PHASE PLAN NOTES:

THIS PHASING PLAN IS TO BE USED AS A REFERENCE TO THE MANNER IN WHICH THE PROJECT IS DIVIDED INTO BASE PHASE AND ADDITIONAL SUPPLEMENTAL PHASES THAT MAY BE ADDED TO OR SUBTRACTED FROM THE TOTAL AS SEEN FIT BY THE CITY ENGINEER.

PLANT MATERIALS AND TURF AREAS HAVE BEEN ORGANIZED AS PER PHASE IN THE PLANT MATERIAL SCHEDULE AND BY PHASE SEPARATION LINES LOCATED ON PLANTING PLANS.

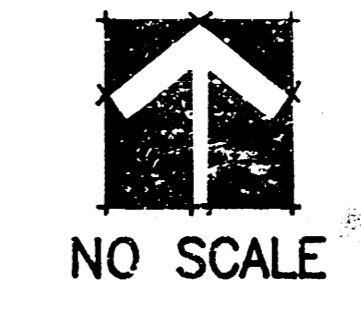
IRRIGATION SERVICE CONNECTIONS, MAINLINES, CONTROLLERS AND INDIVIDUAL VALVED IRRIGATION ZONES HAVE BEEN GROUPED INTO THE PHASING PLAN. THE SYSTEM HAS BEEN DESIGNED TO WORK AS A WHOLE WITH THE INTENTION OF A COMPLETED PROJECT. IN THE CASE THAT THE PLAN IS NOT IMPLEMENTED AS A WHOLE IT IS THE RESPONSIBILITY OF THE IRRIGATION CONTRACTOR TO INSURE THAT THE SYSTEM WORKS PROPERLY AS AN INDIVIDUAL PHASE AND AS A PART OF THE TOTAL PROJECT.



KELLOGG AND RIDGE INTERCHANGE

INSTALLATION PHASE PLAN FOR PLANTING AND IRRIGATION

NO SCALE



Site
 Site
 Site
 Site
 520 S. Holland, Suite 410
 Wichita, Kansas 67209
 (316) 721-1580

Planning Associates
 Planning Associates
 Planning Associates

Sheet No.

project no: 0338
 drawn by: L. ENGLER
 date: 12-22-89

PH of 1

FILMED FROM THE BEST AVAILABLE COPY

12-29-89
 CSB-517
 6038/KELLOGG & RIDGE INTERCHANGE, WICHITA, KS

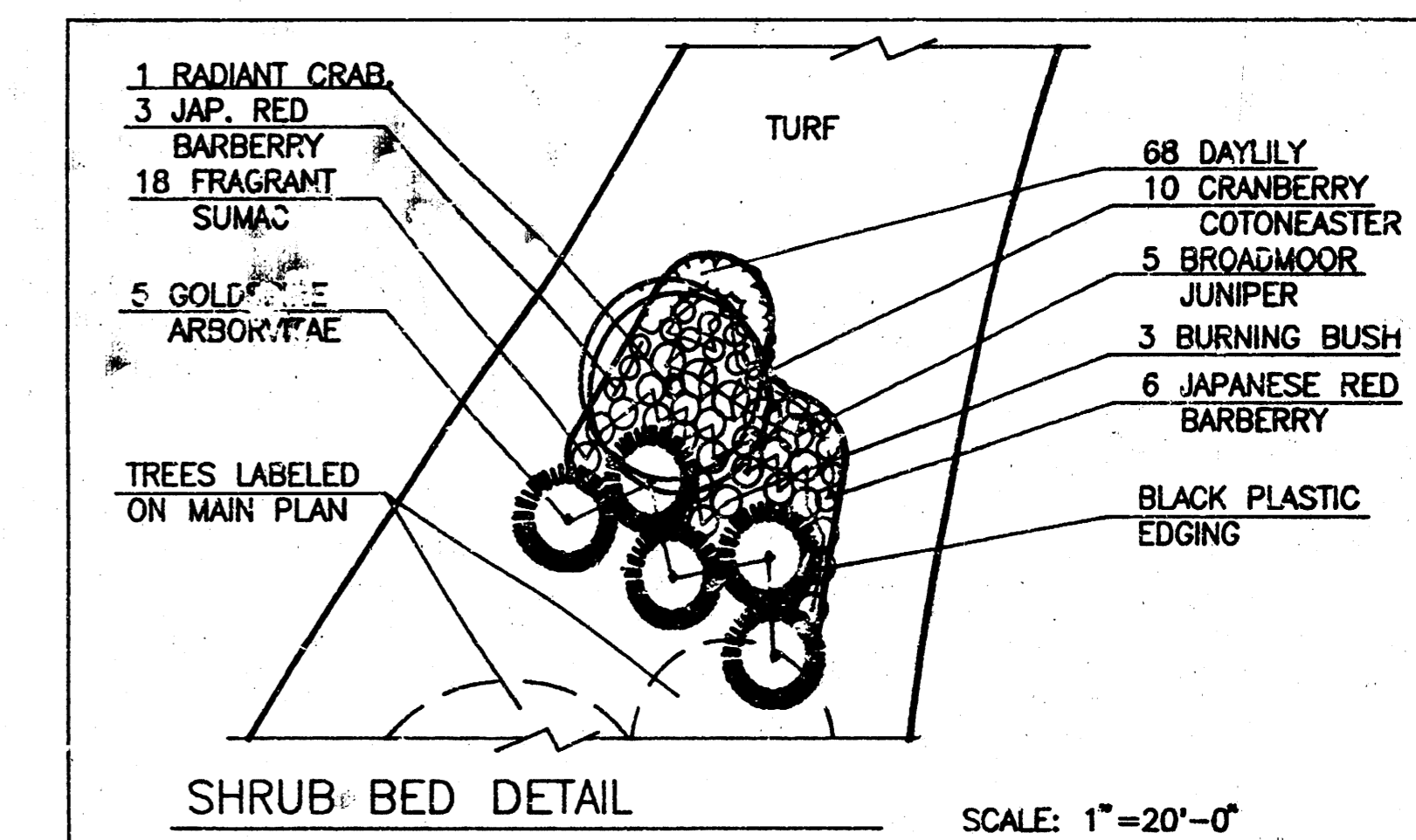
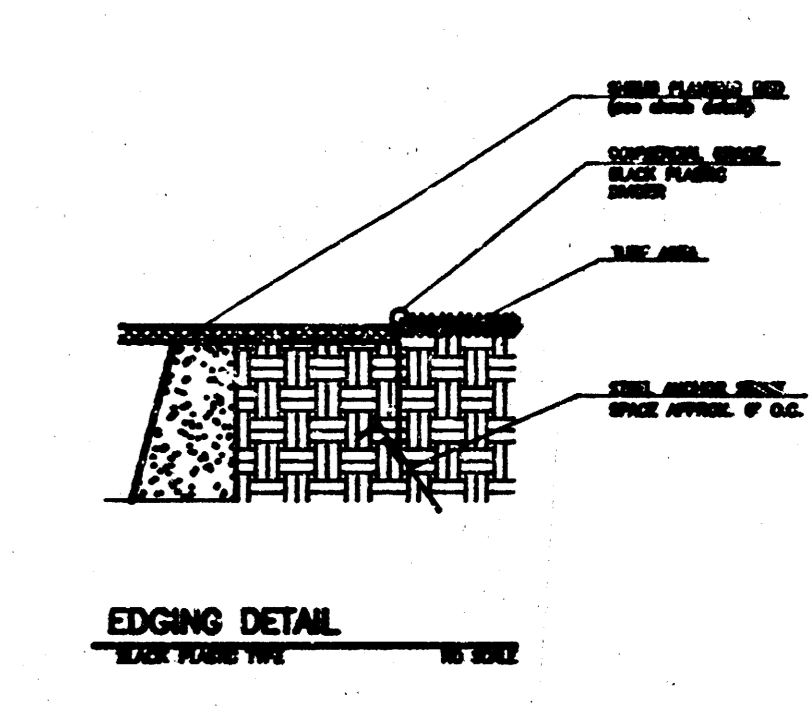
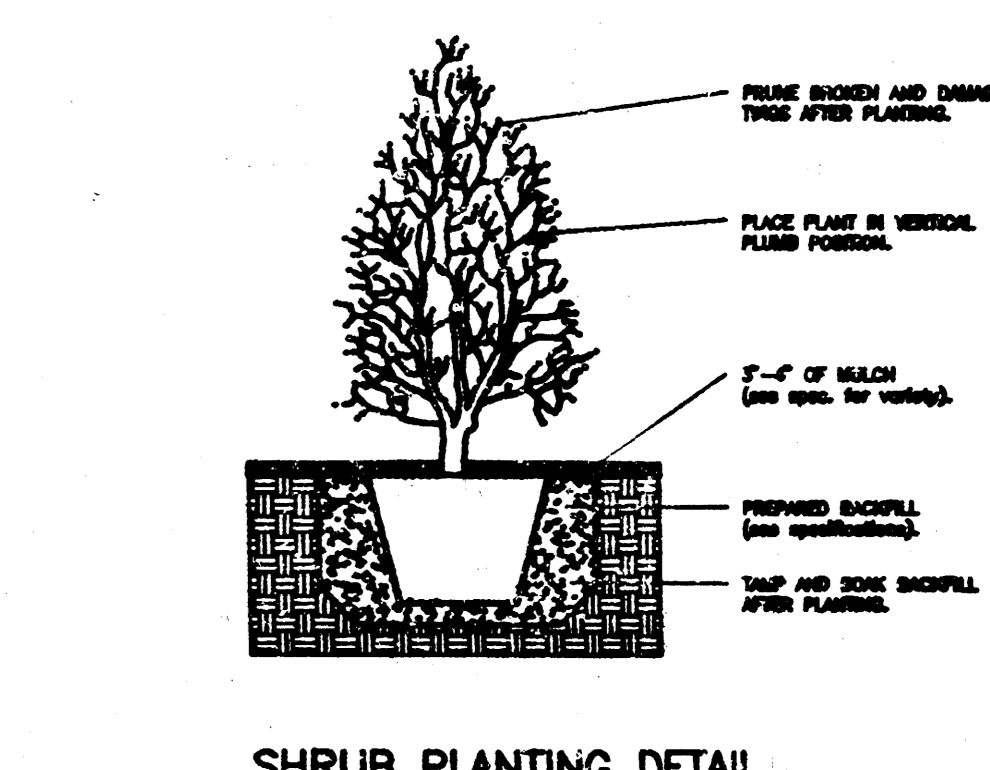
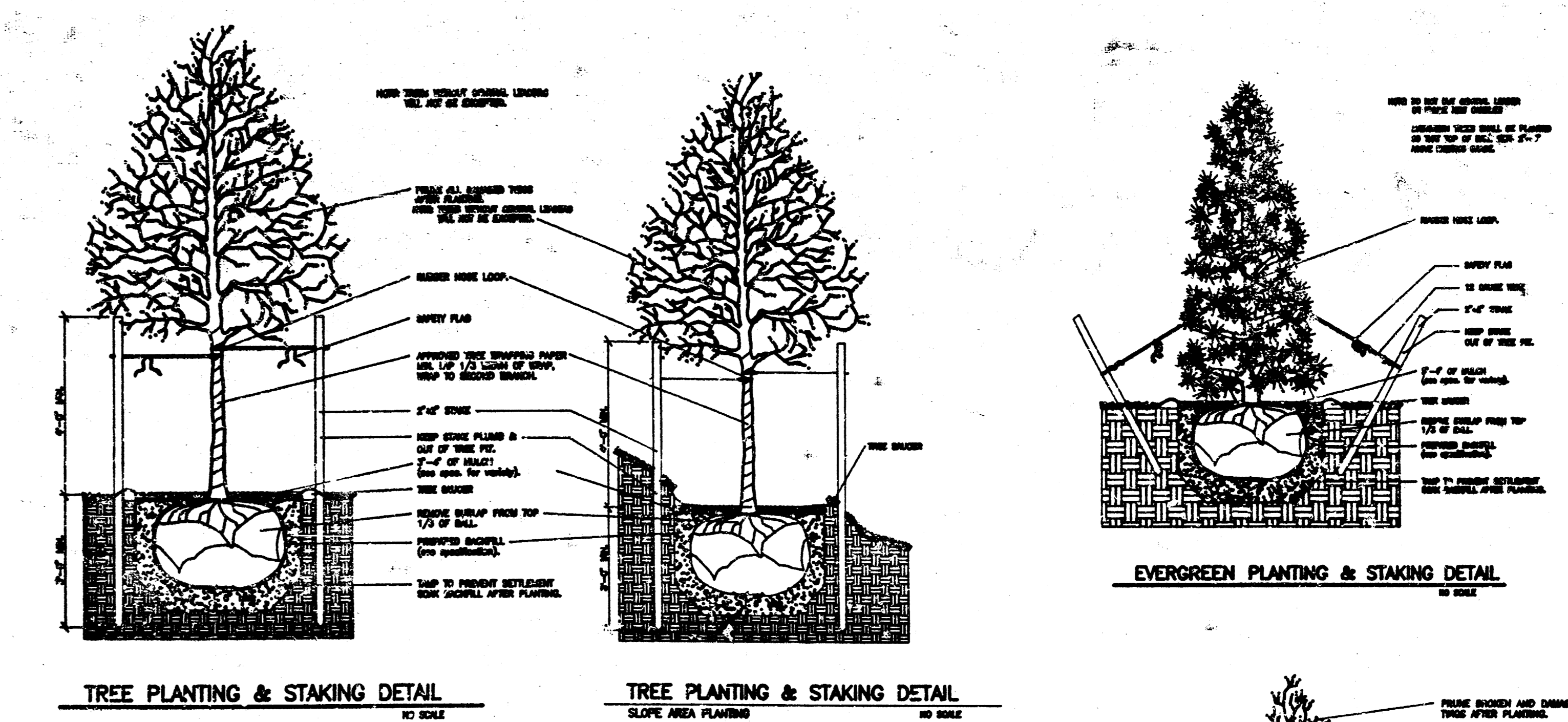
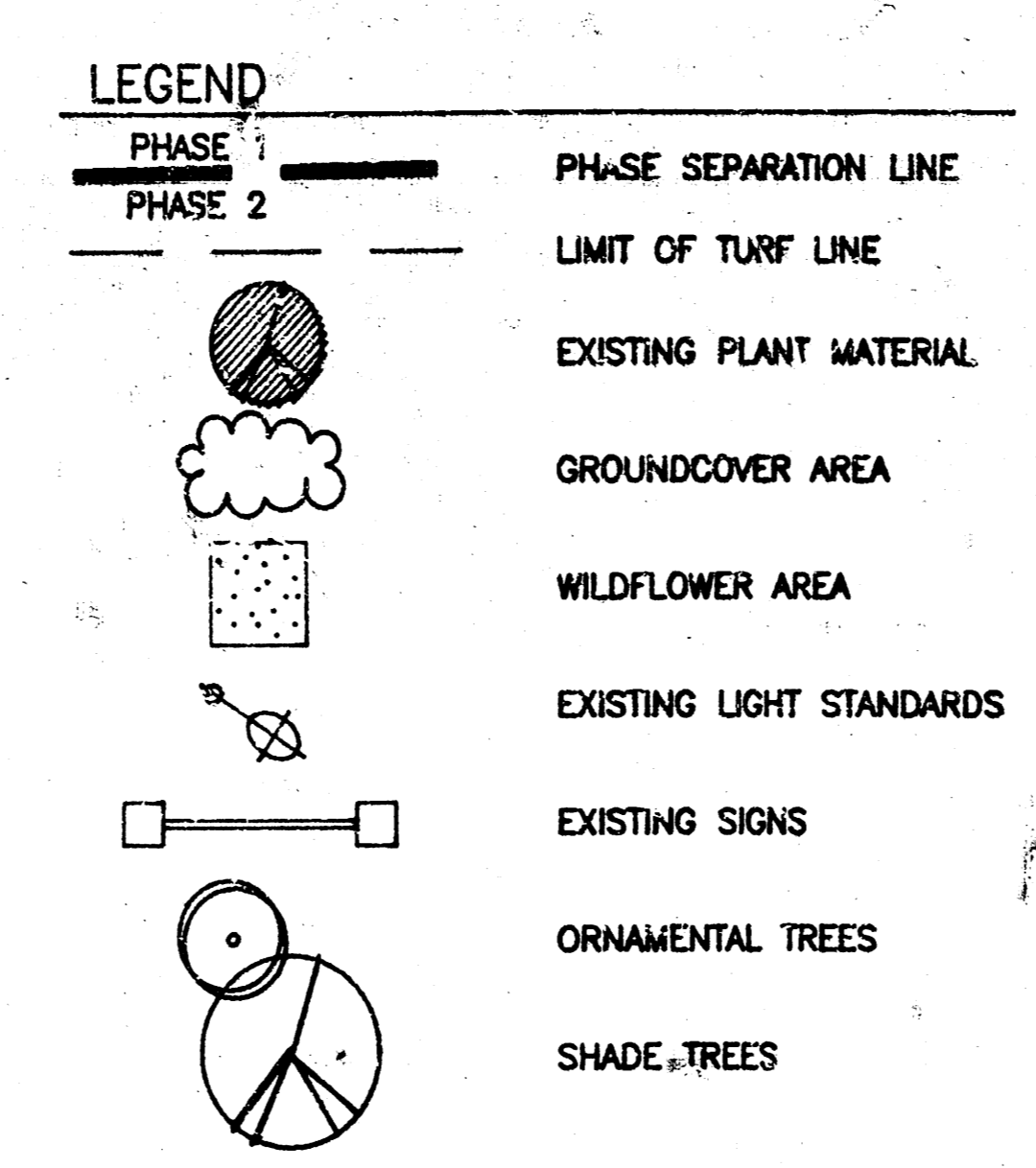
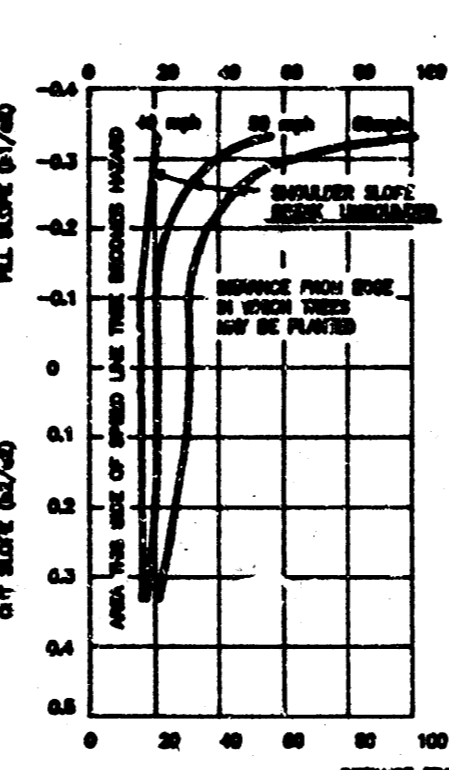
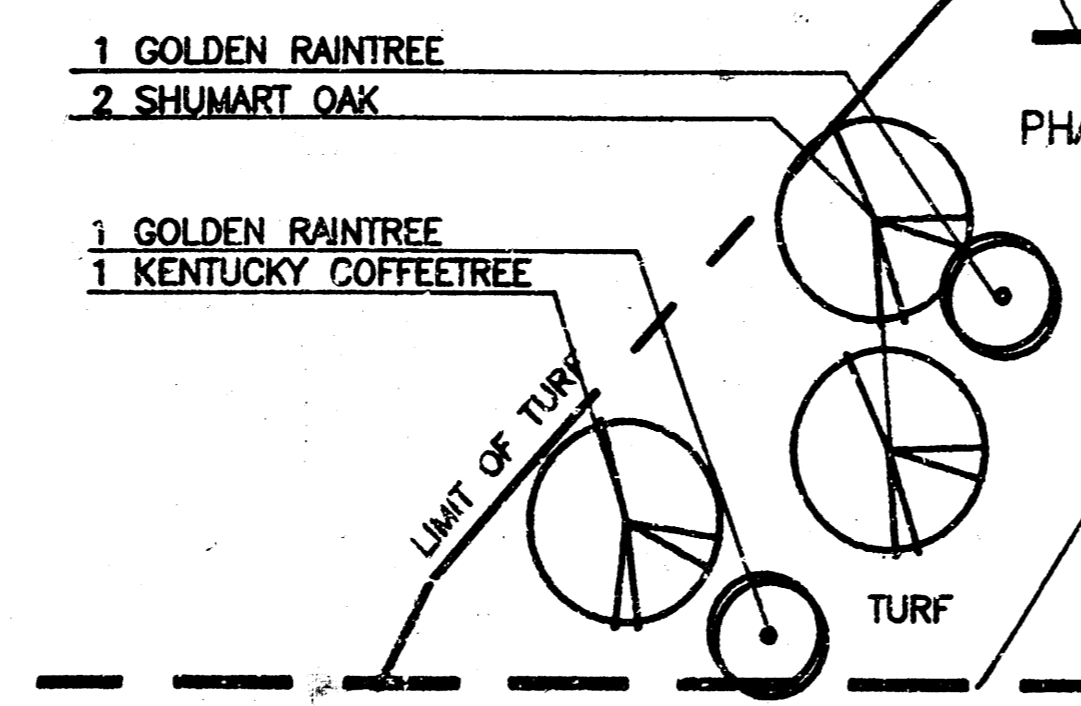
PLANT MATERIAL SCHEDULE

| PHASE I | PHASE II | PHASE III | PHASE IV | PHASE V | PHASE VI | PHASE VII | PHASE VIII | BOTANICAL NAME | COMMON NAME | SIZE | ROOT | REMARKS | |
|--------------------------|----------|-----------|----------|---------|----------|-----------|------------|---|-----------------------------|----------------|-------|--|--|
| SHADE TREES | | | | | | | | | | | | | |
| 6 | 10 | 4 | | 6 | 9 | 2 | | <i>Celtis occidentalis</i> | Hackberry | 2'-2 1/2" Cal. | B&B | | |
| 13 | 12 | 10 | 6 | | 14 | 1 | | <i>Fraxinus penn. "M.S."</i> | Marshall's Seedless Ash | 2'-2 1/2" Cal. | B&B | | |
| | 3 | | | | | | | <i>Fraxinus penn. "M.S."</i> | Marshall's Seedless Ash | 2 1/2"-3" Cal. | B&B | | |
| | | | | | | | | <i>Gleditsia trio. "Moraine"</i> | Moraine Honeylocust | 2'-2 1/2" Cal. | B&B | | |
| 11 | 31 | 8 | 2 | 14 | 39 | | | <i>G. triacanthos "Shademaster"</i> | Shademaster Honeylocust | 2'-2 1/2" Cal. | B&B | | |
| | | | | | | | | <i>G. triacanthos "Skyline"</i> | Skyline Honeylocust | 2'-2 1/2" Cal. | B&B | | |
| 74 | 2 | 4 | | | 17 | | | <i>G. triacanthos "Skyline"</i> | Skyline Honeylocust | 2 1/2"-3" Cal. | B&B | Male Plant Only | |
| | 4 | 5 | | 9 | | | | <i>Gymnocodium dioica</i> | Kentucky Coffeetree | 2'-1 1/2" Cal. | B&B | | |
| | | | | | | | | <i>Liquidambar styraciflua</i> | American Sweetgum | 2'-2 1/2" Cal. | B&B | | |
| | | | | | | | | <i>Pistacia chinensis</i> | Chinese Pistachia | 2'-2 1/2" Cal. | B&B | | |
| 3 | 8 | 3 | 6 | | 12 | | | <i>Platanus acerfolia</i> | London Planetree | 2'-2 1/2" Cal. | B&B | | |
| | | | | | | | | <i>Quercus shumardii</i> | Shumart Oak | 2'-2 1/2" Cal. | B&B | | |
| | | | | | | | | <i>Sapindus drummondii</i> | Soapberry | 2'-2 1/2" Cal. | B&B | | |
| | | | | | | | | <i>Sophora japonica</i> | Japanese Pagoda Tree | 2'-2 1/2" Cal. | B&B | | |
| | | | | | | | | <i>Ulmus parvifolia</i> | Parvifolia Elm | 2'-2 1/2" Cal. | R&B | | |
| ORNAMENTAL TREES | | | | | | | | | | | | | |
| 3 | 7 | 6 | 4 | 4 | | | | <i>Acer glabrum</i> | Amur Maple | 1 1/2"-2" Cal. | B&B | | |
| | 14 | 4 | | 7 | | | | <i>Cercis canadensis</i> | Eastern Redbud | 1 1/2"-2" Cal. | B&B | | |
| 2 | 4 | 4 | 2 | 4 | 6 | | | <i>Crataegus crusgalli "inermis"</i> | Thornless Cockspur Hawthorn | 1 1/2"-2" Cal. | B&B | | |
| | 7 | 1 | 3 | 16 | | | | <i>Koeleruteria paniculata</i> | Golden Raintree | 1 1/2"-2" Cal. | B&B | | |
| | 2 | 2 | | 2 | | | | <i>Koeleruteria paniculata</i> | Golden Raintree | 2'-2 1/2" Cal. | B&B | | |
| 22 | 1 | | | | | | | <i>Malus "Radiant"</i> | Radiant Crabapple | 1 1/2"-2" Cal. | B&B | | |
| | | | | | | | | <i>Malus "Radiant"</i> | Radiant Crabapple | 2'-2 1/2" Cal. | B&B | | |
| | | | | | | | | <i>Malus "Royalty"</i> | Royalty Crabapple | 1 1/2"-2" Cal. | B&B | | |
| | | | | | | | | <i>Prunus caroliniana "Bradford"</i> | Bradford Pear | 1 1/2"-2" Cal. | B&B | | |
| 61 | 4 | 1 | 4 | 3 | 2 | 6 | 3 | <i>Pyrus calleryana "Bradford"</i> | Bradford Pear | 2'-2 1/2" Cal. | B&B | | |
| UPRIGHT EVERGREEN | | | | | | | | | | | | | |
| | 8 | 9 | | | | | | <i>Pinus sylvestris</i> | Scotch Pine | 6'-8" Height | B&B | | |
| | 5 | | | | | | | <i>Thuja "Goldspire"</i> | Goldspire Arborviate | 6'-8" Height | B&B | | |
| SHRUBS | | | | | | | | | | | | | |
| | 9 | | | | | | | <i>Berberis thunbergii</i> | Japanese Red Barberry | 1 Gal. | Cont. | | |
| | 10 | | | | | | | <i>Cotoneaster apiculatus</i> | Cranberry Cotoneaster | 1 Gal. | Cont. | | |
| | 3 | | | | | | | <i>Euonymus alatus</i> | Winged Burning Bush | 5 Gal. | Cont. | | |
| | 5 | | | | | | | <i>Juniperus sibirica "Broadmoor"</i> | Broadmoor Juniper | 1 Gal. | Cont. | | |
| | 18 | | | | | | | <i>Rhus aromatica</i> | Fragrant Sumac | 1 Gal. | Cont. | | |
| GROUNDCOVER | | | | | | | | | | | | | |
| 7234 | | | | | | | | <i>Euonymus fortunei "coloratus"</i> | Wintercreeper | 1 Gal. | Cont. | 24" O.C. | |
| 4938 | 58 | | | | | | | <i>Hemerocallis fulva</i> | Daylily | 1 Gal. | Cont. | 24" O.C. | |
| 135 | 893 | | | | | | | <i>Lonicera japonica "Halliana"</i> | Hill's Honeysuckle | 1 Gal. | Cont. | 36" O.C. | |
| 22383 | | | | | | | | <i>Parthenocissus quinifolia</i> | Virginia Creeper | 1 Gal. | Cont. | 24" O.C. | |
| | | | | | | | | <i>Vinca minor</i> | Periwinkle | 4" Pot | Cont. | 12" O.C. | |
| WILDFLOWER AREA | | | | | | | | | | | | | |
| 59424 sq. ft. | | | | | | | | | | | | | |
| | | | | | | | | <i>Delphinium ajacis</i> | Rocket Larkspur | Seed | | 10 lbs. per acre | |
| | | | | | | | | <i>Dimorphoteca aurantiaca</i> | African Daisy | Seed | | 9 lbs. per acre | |
| | | | | | | | | <i>Linum rubrum</i> | Scarlet Flax | Seed | | 8 lbs. per acre | |
| | | | | | | | | <i>Papaver rhoeas</i> | Corn Poppy | Seed | | 2 lbs. per acre | |
| | | | | | | | | Total Flower Seed Mix/Area | | | | 29 lbs. per acre | |
| TURF GRASS | | | | | | | | | | | | | |
| 130000 | sq. ft. | | | | | | | <i>Bouteloua gracilis</i> | Blue Grama | Seed | | 11 lbs. per acre pis | |
| | | | | | | | | <i>Buchloe dactyloides</i> | Buffalo Grass | Seed | | 22 lbs. per acre pis | |
| 93034 | sq. ft. | | | | | | | <i>Festuca arundinacea "Rebel & Falcon"</i> | Tall Fescue | Seed | | 10 lbs. per 1,000 sq. ft. (see spec. for fert. req.) | |
| 235368 | sq. ft. | | | | | | | | | | | | |
| 127376 | sq. ft. | | | | | | | | | | | | |
| 79719 | sq. ft. | | | | | | | | | | | | |

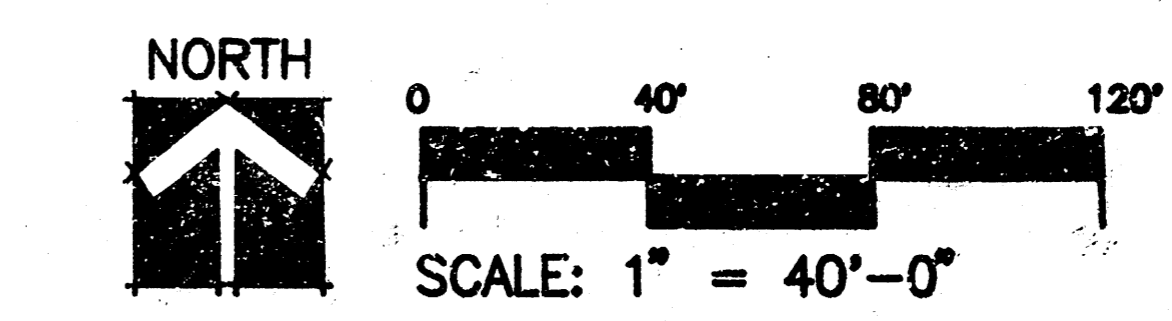
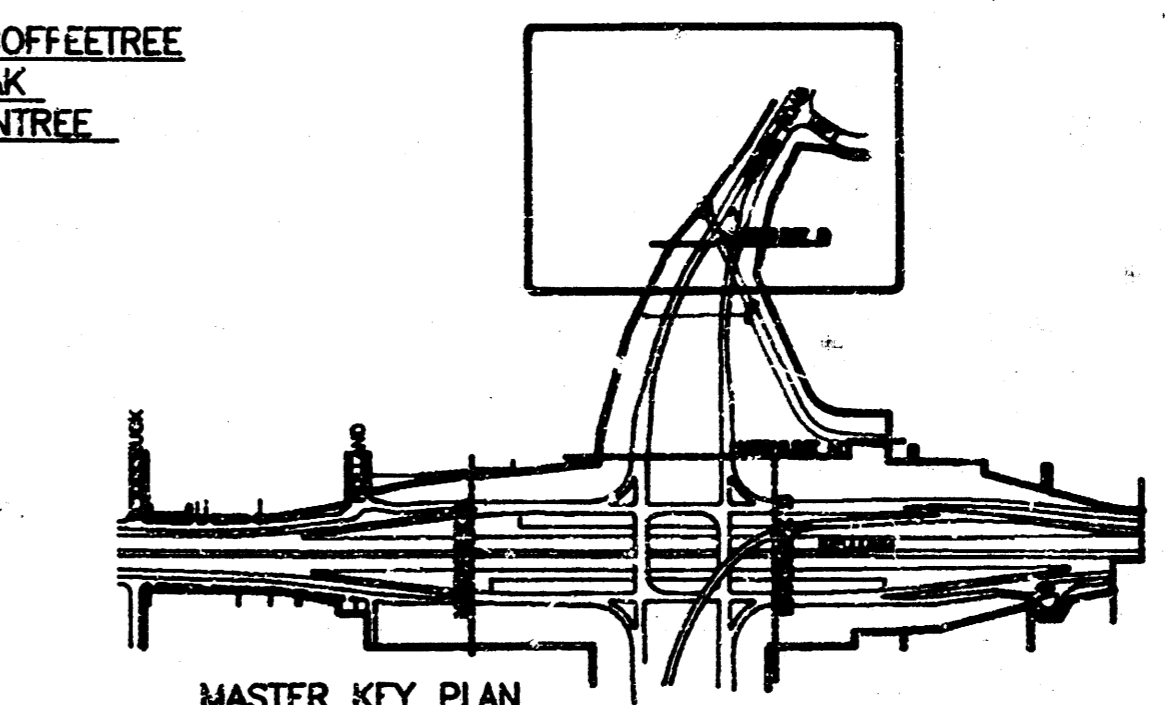
GENERAL NOTES

- TOTAL QUANTITIES OF MATERIALS SHOWN ON LANDSCAPE DRAWINGS SHALL TAKE PRECEDENCE OVER QUANTITIES SHOWN ON THE PLANT SCHEDULE. THE LANDSCAPE CONTRACTOR SHALL BE RESPONSIBLE FOR VERIFYING ALL QUANTITIES ON THE PLANTING PLAN.
- REPORT ANY DISCREPANCIES IN THE PLANTING PLAN TO THE PROJECT ENGINEER PRIOR TO STARTING CONSTRUCTION.
- PROTECT AND SAVE ALL EXISTING PLANT MATERIALS WHENEVER POSSIBLE.
- THE PLANTING PLAN IS DIVIDED INTO EIGHT CONSTRUCTION PHASES SEPARATED BY A "PHASE SEPARATION LINE". THE PLANT QUANTITIES IN THE PLANT SCHEDULE REFLECTS THE QUANTITIES IN EACH OF THE PHASES.
- EXISTING ASPHALT IN STREET ISLANDS AT INTERSECTIONS OF RIDGE ROAD AND KELLOGG SHALL BE REMOVED BY THE CITY OF WICHITA. AREAS SHALL RECEIVE EMPHATIC HIGH QUALITY TOP SOIL TO BISC GRADE UP TO THE TOP OF THE EXISTING CURB (A MINIMUM OF 4" TOPSOIL IS REQUIRED). THE CITY OF WICHITA SHALL PROVIDE TOPSOIL. GRADING SHALL BE CONTRACTORS RESPONSIBILITY.
- USE TRIANGULAR SPACING IN ALL GROUND COVER AND ANNUAL BEDS.
- WHEN PLANTING TREES IN AREAS THAT ARE ADJACENT TO OR IN PROPERTY OWNERS PLANTING AREAS CARE IS TO BE TAKEN SO NOT TO DISTURB EXISTING PLANT MATERIALS OR TURF AREAS.
- PLANT TREES AS PER PLANTING DETAILS. WHEN PLANTING TREES IN FIELD CONSULT TREE CODE PLACEMENT TABLE FOR MINIMUM DISTANCE REQUIRED FROM STREET CURB IN ACCORDANCE WITH SHOULDER SLOPE.
- TURF AREAS ARE TO BE INSTALLED IN PHASED AREAS AS DELINEATED ON PLANS. TYPICALLY THE TURF AREAS ARE BOUNDED BY THE ROADS CURB, THE PHASE DESIGNATOR LINE AND THE STREET RIGHT-OF-WAY LINE OR A LIMIT OF TURF LINE, WHICHEVER AREA IS THE LEAST.
- EXISTING TURF IN PROPOSED BASE BID TURF AREA IS TO BE KILLED WITH PROPER HERBICIDE, EARTH TILLED A DEPTH OF 6" AND REGRADING BEFORE HYDRO-SEEDING WITH TURF SEED MIXTURE. REMAINING ALTERNATE BID TURF AREAS ARE TO BE OVER-SEED.
- THE WILD FLOWER AREA (BETWEEN NORTH AND SOUTH BOUND LINES OF RIDGE ROAD) IS TO BE CONSIDERED AS AN ALTERNATIVE FOR TURF IN PHASE 4 OF THE CONSTRUCTION SCHEDULE.

- WILDFLOWER AREAS SHALL BE PLANTED AT RATES SHOWN IN PLANT SCHEDULE.
- USE WOOD CHIP MULCH IN ALL PLANTING BEDS, GROUNDCOVER BEDS AND TREE SAUCERS. LANDSCAPE CONTRACTOR SHALL SUPPLY THE LANDSCAPE ARCHITECT WITH A SAMPLE OF THE MULCH FOR APPROVAL PRIOR TO STARTING CONSTRUCTION.
- PLACE 3"-4" OF MULCH IN ALL SHRUB BEDS AND IN ALL TREE SAUCERS (SEE DETAILS). PLACE 1" OF MULCH IN THE GROUND COVER BEDS.
- EDGING SHALL BE COMMERCIAL GRADE BLACK PLASTIC INSTALLED IN A TRENCH AND SECURED WITH METAL BARBED STAPLES.
- WILDFLOWER SEED RATES ARE SHOWN IN SEEDING RATES IN POUNDS OF PURE LIVE SEED PER ACRE.



NOTE: SHRUB AREA TO BE INSTALLED IN PHASE 3.

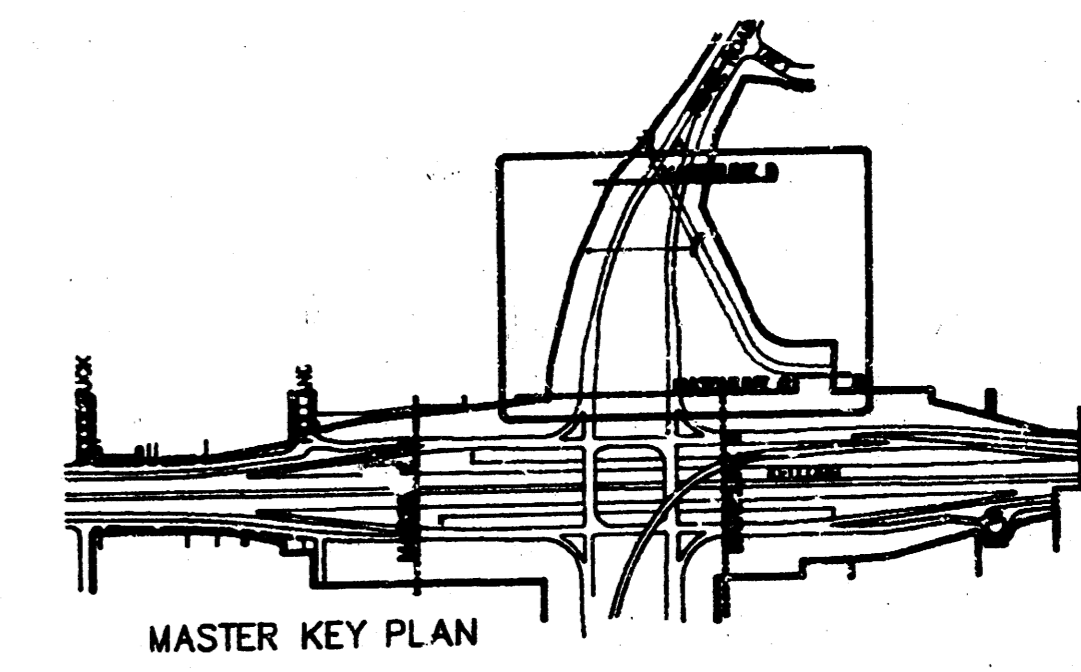
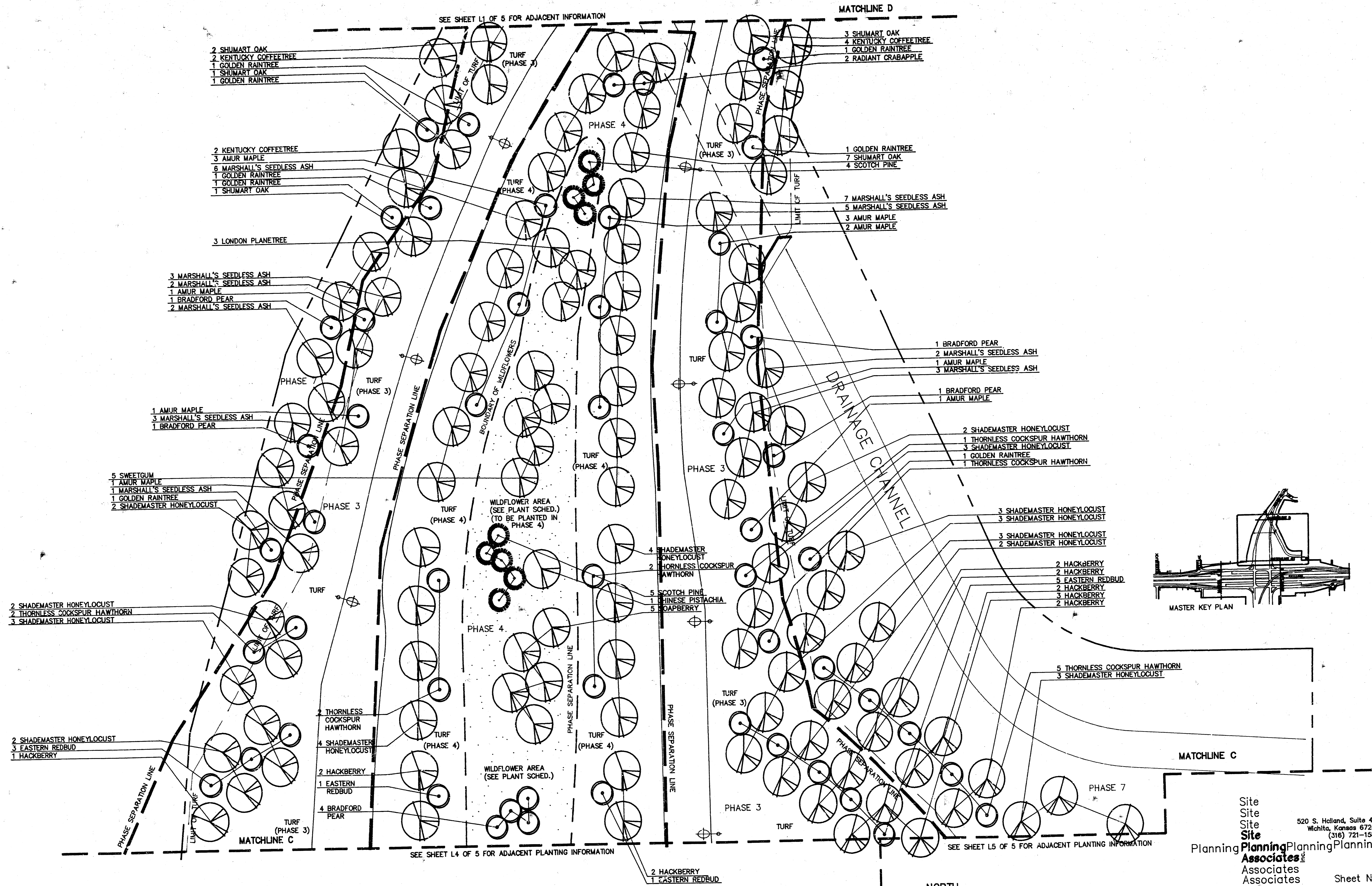


Site
 Site
 Site
 Site
 Planning Associates
 Associates
 Associates
 Sheet No.

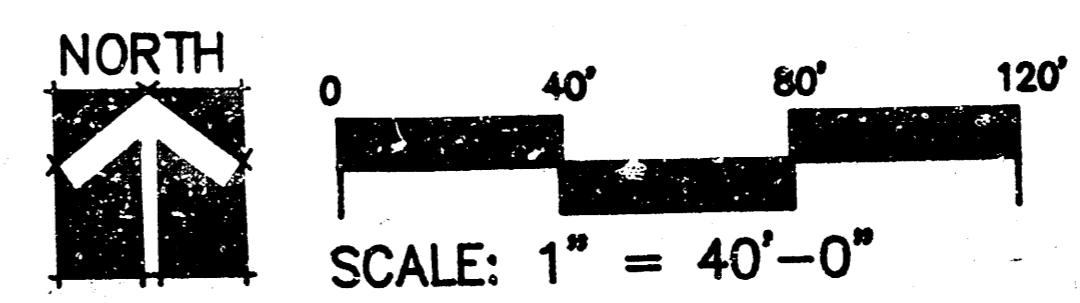
project no: #0338
 drawn by: L ENGLER
 date: 12-29-89

KELLOGG AND RIDGE INTERCHANGE
 LANDSCAPE PLANTING PLAN

AVAILABLE COPY



KELLOGG AND RIDGE INTERCHANGE
LANDSCAPE PLANTING PLAN



Site
 Site
 Site
 Site
 Planning Associates
 Associates
 Associates
 Sheet No.
 project no: 40338
 drawn by: L. ENGLER
 date: 12-19-89

520 S. Holland, Suite 410
 Wichita, Kansas 67209
 (316) 721-1580

Sheet No.

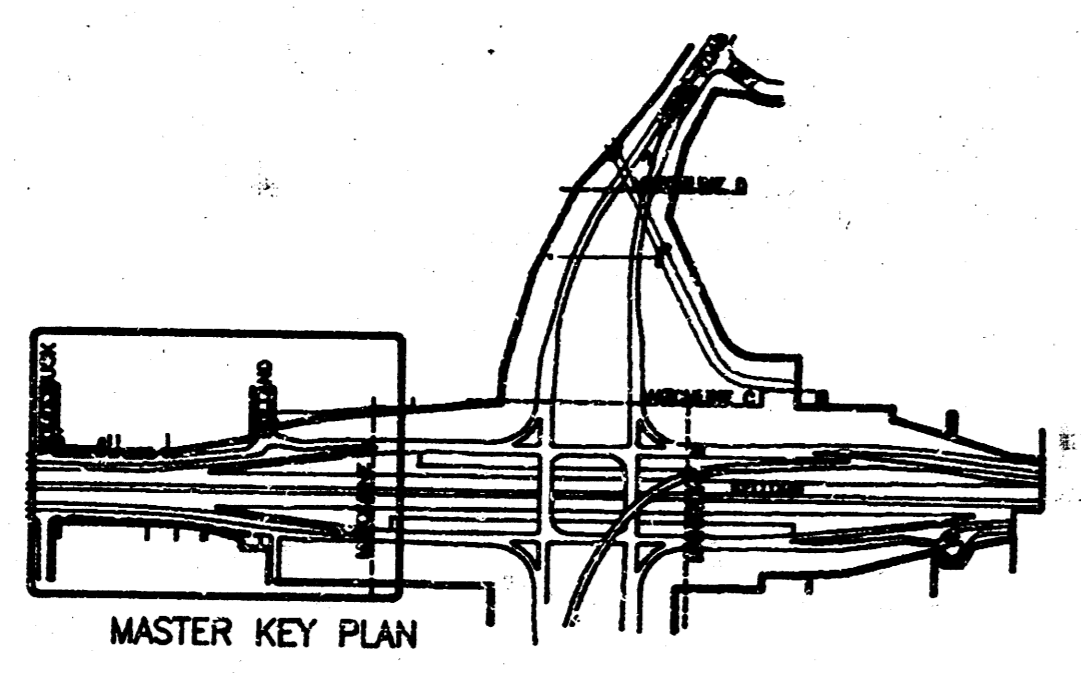
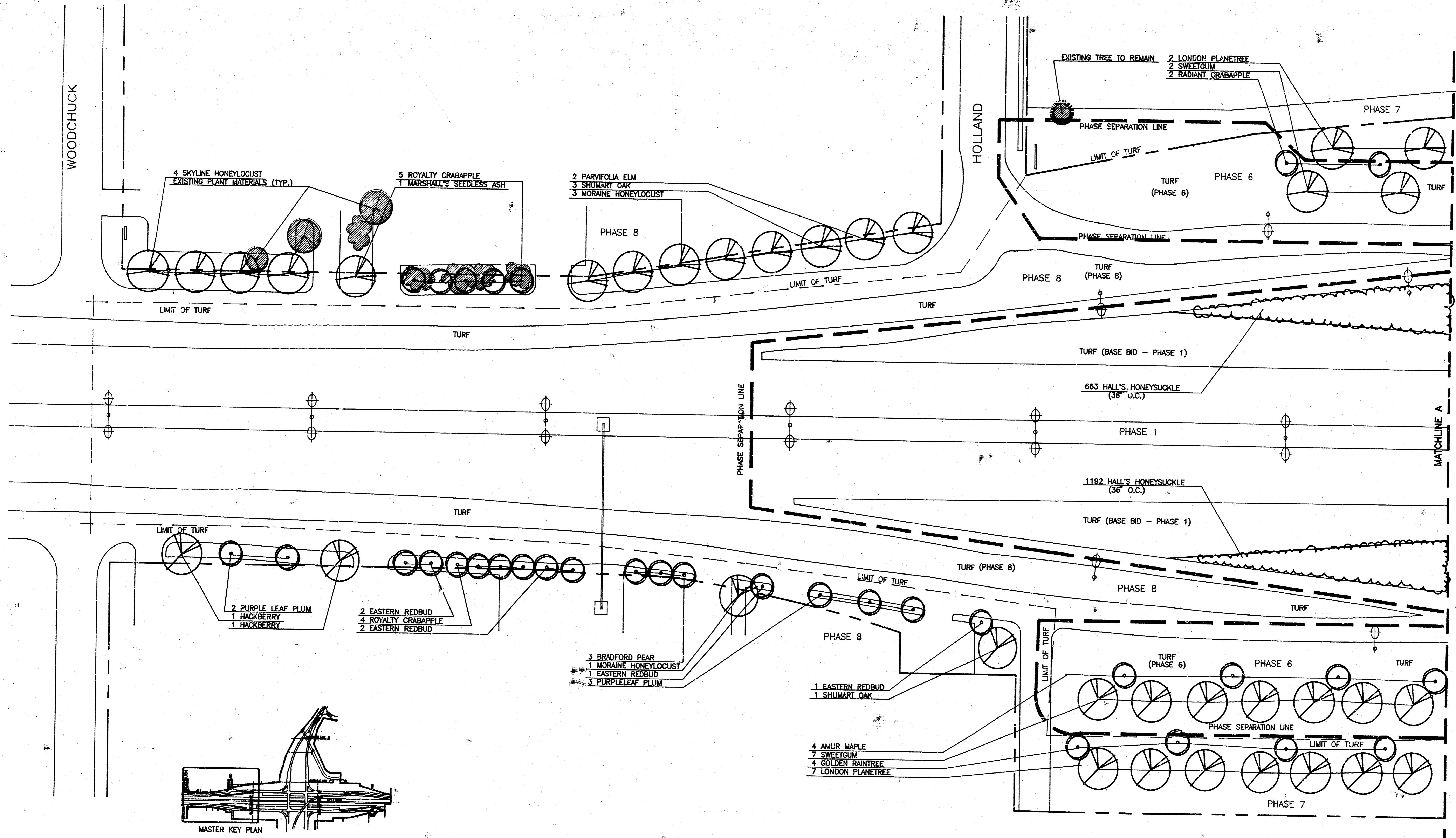
L2 of 5

FILMED FROM THE BEST AVAILABLE COPY

12-19-89

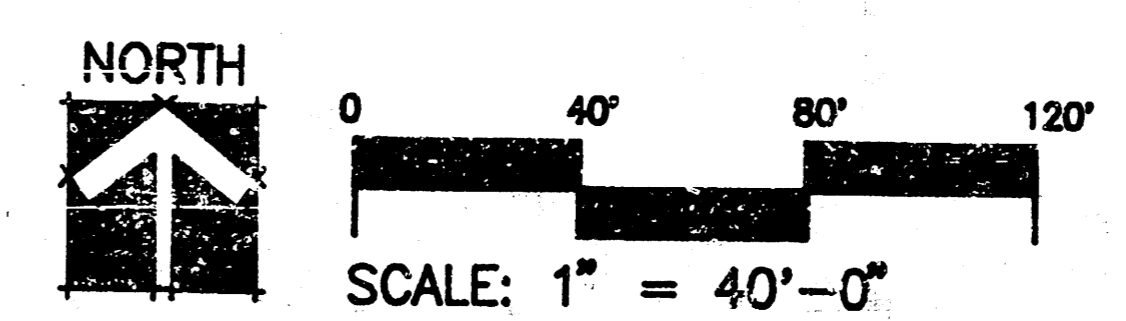
CS-33-33

80339/KELLOGG & RIDGE INTERCHANGE/WICHITA, KS.



SEE SHEET L4 OF 5 FOR ADJACENT INFO.

KELLOGG AND RIDGE INTERCHANGE
LANDSCAPE PLANTING PLAN



Site
 Site
 Site
 Site
 Planning
 Associates
 Associates
 Associates
 Associates
 520 S. Holland, Suite 410
 Wichita, Kansas 67209
 (316) 721-1580
 Sheet No.

project no: #0338
 drawn by: L ENGLER
 date: 12-19-89

L 3 of 5

4033X/KELLOGG & RIDGE INTERCHANGE/PHICHTA, KS
 CS-21-297

IRRIGATION CONTROLLER SCHEDULES

CONTROLLER NUMBER 1 (SEE SHEET 11 OF 5)

| VALVE | STATION | TYPE | VALVE SIZE | GPM | PHASE |
|-------|---------|---------------------|------------|------|-------|
| A | 1 | 4" POP-UP SPRAY | 2" | 84.6 | 5 |
| B | 2 | 4" POP-UP SPRAY | 2" | 22.3 | 5 |
| C | 3 | FIXED RISER RUBBLER | 1" | 18.0 | 5 |
| M | 13 | 2045A MAND-PW | 1.5" | 46.9 | 5 |
| N | 14 | R-70 FC | 2" | 93.2 | 5 |

| VALVE | STATION | TYPE | VALVE SIZE | GPM | PHASE |
|-------|---------|---------|------------|-------|-------|
| D | 4 | R-70 FC | 2" | 146.5 | 3 |
| E | 5 | R-70 FC | 2" | 80.5 | 3 |
| F | 6 | R-70 FC | 2" | 86.4 | 3 |
| G | 7 | R-70 FC | 2" | 62.8 | 3 |
| H | 8 | R-70 FC | 2" | 84.0 | 3 |
| I | 9 | R-70 FC | 2" | 88.4 | 4 |
| J | 10 | R-70 FC | 2" | 83.3 | 4 |
| K | 11 | R-70 FC | 2" | 83.3 | 4 |
| L | 12 | R-70 FC | 2" | 85.8 | 4 |
| O | 16 | R-70 FC | 2" | 86.0 | 5 |
| P | 17 | R-70 FC | 2" | 83.3 | 5 |

| VALVE | STATION | TYPE | VALVE SIZE | GPM | PHASE |
|-------|---------|-------------------|------------|-------|-------|
| I | 9 | R-70 FC | 2" | 92.6 | 4 |
| J | 10 | R-70 FC | 2" | 92.8 | 4 |
| K | 11 | R-70 FC | 2" | 84.8 | 4 |
| L | 12 | R-70 FC | 2" | 55.8 | 4 |
| M | 18 | R-70 FC | 2" | 86.0 | 5 |
| N | 19 | 12" POP-UP STREAM | 2" | 48.12 | 5 |

CONTROLLER NUMBER 4 (SEE SHEET 15 OF 5)

| VALVE | STATION | TYPE | VALVE SIZE | GPM | PHASE |
|-------|---------|---------------|------------|------|-------|
| 4P | 1 | R-70 FC | 2" | 84.0 | 3 |
| 4Q | 2 | R-70 FC | 2" | 86.4 | 3 |
| 4R | 3 | 2045A MAND-PW | 1" | 21.8 | 3 |

| VALVE | STATION | TYPE | VALVE SIZE | GPM | PHASE |
|-------|---------|---------|------------|-------|-------|
| 40 | 4 | R-70 FC | 2" | 83.8 | 3 |
| 41 | 5 | R-70 FC | 2" | 100.8 | 3 |

| VALVE | STATION | TYPE | VALVE SIZE | GPM | PHASE |
|-------|---------|-------------------|------------|-------|-------|
| 4A | 8 | R-70 FC | 2" | 86.0 | 5 |
| 4B | 7 | R-70 FC | 2" | 84.0 | 5 |
| 4C | 8 | 12" POP-UP STREAM | 1.5" | 61.83 | 5 |

CONTROLLER NUMBER 2 (SEE SHEET 14 OF 5)

| VALVE | STATION | TYPE | VALVE SIZE | GPM | PHASE |
|-------|---------|-----------------|------------|-------|-------|
| 2H | 1 | 4" POP-UP SPRAY | 2" | 86.83 | 1 |
| 2I | 8 | STREAM SPRAY | 2" | 28.0 | 1 |
| 2J | 7 | 2045A MAND-PW | 2" | 85.1 | 1 |
| 2A | 12 | R-70 FC | 2" | 62.3 | 6 |
| 2B | 13 | R-70 FC | 2" | 94.8 | 6 |
| 2C | 14 | 4" POP-UP SPRAY | 2" | 86.02 | 6 |
| 2D | 18 | 4" POP-UP SPRAY | 2" | 86.43 | 6 |
| 2E | 19 | 4" POP-UP SPRAY | 2" | 87.83 | 6 |
| 2F | 20 | 4" POP-UP SPRAY | 2" | 75.8 | 6 |
| 2G | 21 | 4" POP-UP SPRAY | 2" | 85.2 | 6 |

| VALVE | STATION | TYPE | VALVE SIZE | GPM | PHASE |
|-------|---------|--------------------|------------|------|-------|
| 2H | 2 | FIXED RISER IMPACT | 2" | 88.8 | 1 |
| 2I | 3 | STREAM SPRAY | 2" | 82.8 | 1 |
| 2J | 4 | 2045A MAND-PW | 2" | 86.1 | 1 |
| 2K | 5 | STREAM SPRAY | 2" | 82.8 | 1 |
| 2L | 14 | R-70 FC | 2" | 42.5 | 6 |
| 2M | 15 | R-70 FC | 2" | 83.8 | 6 |
| 2N | 16 | R-70 FC | 2" | 84.0 | 6 |

| VALVE | STATION | TYPE | VALVE SIZE | GPM | PHASE |
|-------|---------|-----------------|------------|-------|-------|
| 2R | 8 | STREAM SPRAY | 2" | 85.3 | 1 |
| 2S | 9 | STREAM SPRAY | 2" | 75.3 | 1 |
| 2T | 10 | 2045A MAND-PW | 2" | 88.2 | 1 |
| 2U | 11 | 4" POP-UP SPRAY | 2" | 87.89 | 1 |

| VALVE | STATION | TYPE | VALVE SIZE | GPM | PHASE |
|-------|---------|-----------------|------------|-------|-------|
| 2R | 8 | STREAM SPRAY | 2" | 85.3 | 1 |
| 2S | 9 | STREAM SPRAY | 2" | 75.3 | 1 |
| 2T | 10 | 2045A MAND-PW | 2" | 88.2 | 1 |
| 2U | 11 | 4" POP-UP SPRAY | 2" | 87.89 | 1 |

| VALVE | STATION | TYPE | VALVE SIZE | GPM | PHASE |
|-------|---------|-----------------|------------|-------|-------|
| 4E | 9 | R-70 FC | 2" | 84.0 | 5 |
| 4F | 10 | R-70 FC | 2" | 70.0 | 5 |
| 4G | 11 | R-70 FC | 2" | 84.0 | 5 |
| 4H | 12 | R-70 FC | 2" | 84.0 | 5 |
| 4I | 13 | R-70 FC | 2" | 87.8 | 5 |
| 4J | 14 | R-70 FC | 2" | 87.8 | 5 |
| 4K | 15 | 4" POP-UP SPRAY | 2" | 88.58 | 5 |
| 4L | 16 | 4" POP-UP SPRAY | 2" | 88.13 | 5 |
| 4M | 17 | 4" POP-UP SPRAY | 2" | 84.5 | 5 |
| 4N | 18 | 4" POP-UP SPRAY | 2" | 81.8 | 5 |

| VALVE | STATION | TYPE | VALVE SIZE | GPM | PHASE |
|-------|---------|-----------------|------------|-------|-------|
| 4E | 9 | R-70 FC | 2" | 84.0 | 5 |
| 4F | 10 | R-70 FC | 2" | 70.0 | 5 |
| 4G | 11 | R-70 FC | 2" | 84.0 | 5 |
| 4H | 12 | R-70 FC | 2" | 84.0 | 5 |
| 4I | 13 | R-70 FC | 2" | 87.8 | 5 |
| 4J | 14 | R-70 FC | 2" | 87.8 | 5 |
| 4K | 15 | 4" POP-UP SPRAY | 2" | 88.58 | 5 |
| 4L | 16 | 4" POP-UP SPRAY | 2" | 88.13 | 5 |
| 4M | 17 | 4" POP-UP SPRAY | 2" | 84.5 | 5 |
| 4N | 18 | 4" POP-UP SPRAY | 2" | 81.8 | 5 |

CONTROLLER NUMBER 3 (SEE SHEET 14 OF 5)

| VALVE | STATION | TYPE | VALVE SIZE | GPM | PHASE |
|-------|---------|--------------------|------------|-------|-------|
| 3D | 1 | 4" POP-UP SPRAY | 2" | 88.33 | 1 |
| 3A | 2 | STREAM SPRAY | 2" | 27.4 | 1 |
| 3K | 3 | FIXED RISER IMPACT | 1.5" | 37.6 | 1 |
| 3L | 4 | 2045A MAND-PW | 2" | 74.7 | 1 |
| 3M | 10 | R-70 FC | 2" | 86.0 | 4 |
| 3N | 11 | R-70 FC | 2" | 88.0 | 4 |
| 3A | 17 | 4" POP-UP SPRAY | 2" | 28.8 | 8 |
| 3B | 18 | 4" POP-UP SPRAY | 2" | 83.8 | 8 |
| 3C | 19 | 4" POP-UP SPRAY | 2" | 83.8 | 8 |
| 3E | 20 | 4" POP-UP SPRAY | 2" | 90.4 | 8 |
| 3F | 21 | 4" POP-UP SPRAY | 2" | 82.3 | 8 |
| 3G | 22 | 4" POP-UP SPRAY | 2" | 88.88 | 8 |

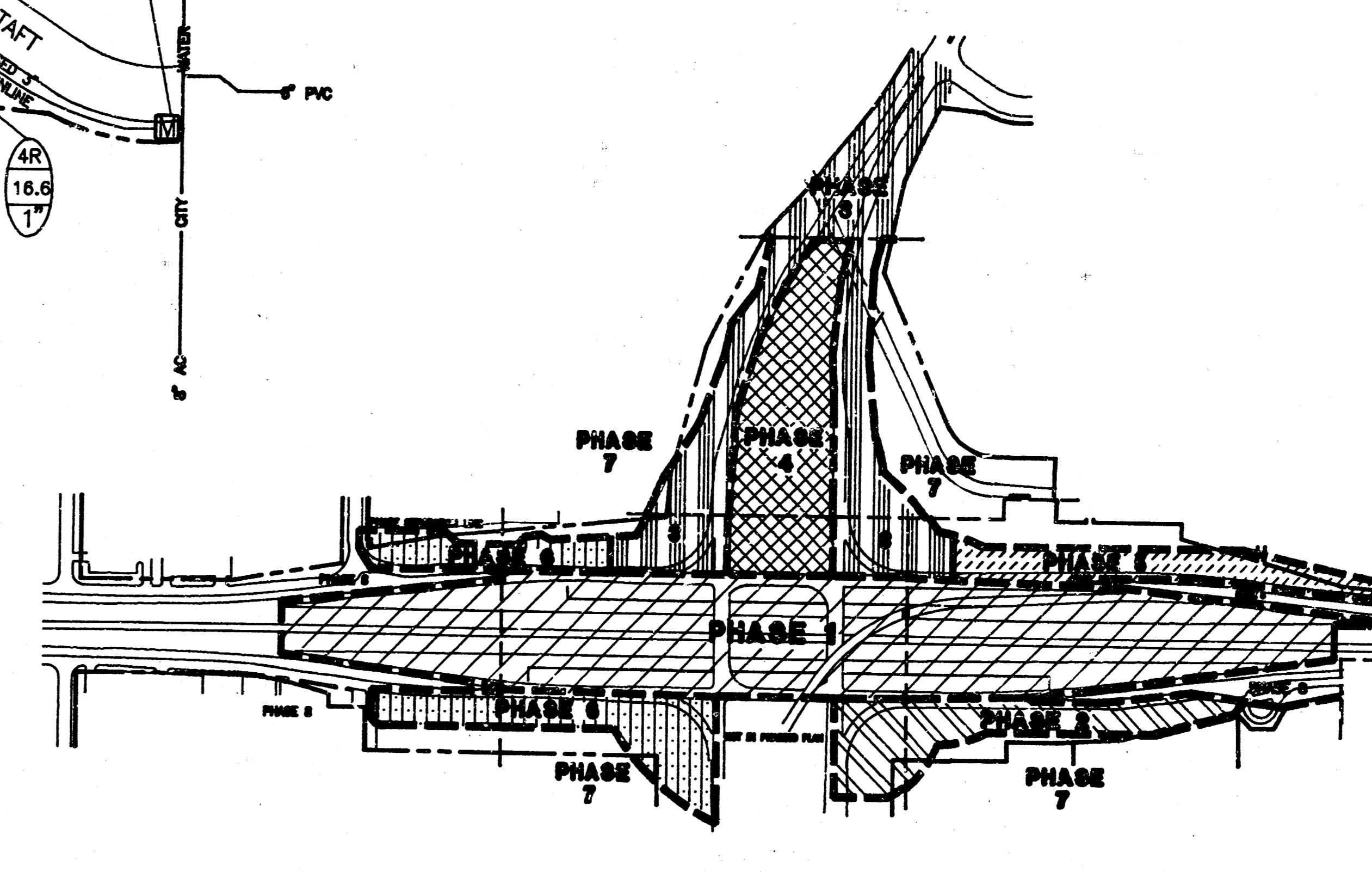
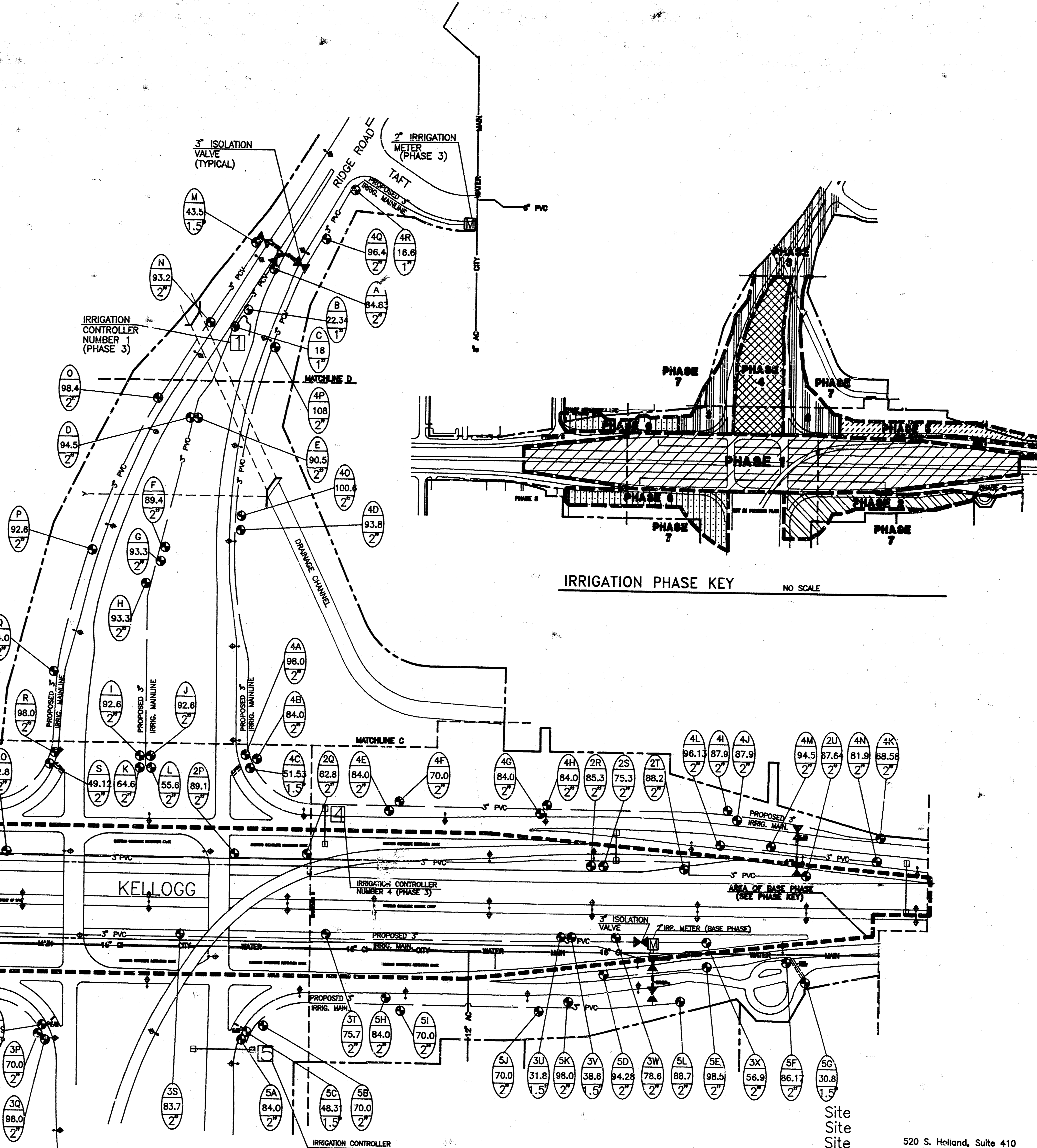
| VALVE | STATION | TYPE | VALVE SIZE | GPM | PHASE |
|-------|---------|-------------------|------------|-------|-------|
| 3R | 5 | STREAM SPRAY | 2" | 78.4 | 1 |
| 3S | 6 | 2045A MAND-PW | 2" | 83.3 | 1 |
| 3M | 12 | R-70 FC | 2" | 86.0 | 6 |
| 3N | 13 | R-70 FC | 2" | 84.0 | 6 |
| 3O | 14 | 12" POP-UP STREAM | 1.5" | 54.58 | 6 |
| 3P | 15 | R-70 FC | 2" | 70.0 | 6 |
| 3Q | 16 | R-70 FC | 2" | 86.0 | 6 |

| VALVE | STATION | TYPE | VALVE SIZE | GPM | PHASE |
|-------|---------|--------------------|------------|-------|-------|
| 3T | 7 | STREAM SPRAY | 2" | 76.67 | 1 |
| 3U | 3 | FIXED RISER IMPACT | 1.5" | 31.8 | 1 |
| 3V | 2 | STREAM SPRAY | 1.5" | 38.8 | 1 |
| 3W | 8 | 2045A MAND-PW | 2" | 78.4 | 1 |
| 3X | 9 | 4" POP-UP SPRAY | 2" | 58.8 | 1 |

| VALVE | STATION | TYPE | VALVE SIZE | GPM | PHASE |
|-------|---------|-------------------|------------|-------|-------|
| 5A | 1 | R-70 FC | 2" | 84.0 | 5 |
| 5B | 2 | R-70 FC | 2" | 70.0 | 5 |
| 5C | 3 | 12" POP-UP STREAM | 1.5" | 48.31 | 5 |

| VALVE | STATION | TYPE | VALVE SIZE | GPM | PHASE |
|-------|---------|-----------------|------------|-------|-------|
| 5D | 4 | 4" POP-UP SPRAY | 2" | 84.25 | 8 |
| 5E | 5 | 4" POP-UP SPRAY | 2" | 86.5 | 8 |
| 5F | 6 | 4" POP-UP SPRAY | 2" | 86.17 | 8 |
| 5G | 7 | 2045A MAND-PW | 1.5" | 31.7 | 8 |
| 5H | 8 | R-70 FC | 2" | 84.0 | 2 |
| 5I | 9 | R-70 FC | 2" | 70.0 | 2 |
| 5J | 10 | R-70 FC | 2" | 70.0 | 2 |
| 5K | 11 | R-70 FC | 2" | 86.0 | 2 |
| 5L | 12 | R-70 FC | 2" | 86.7 | 2 |

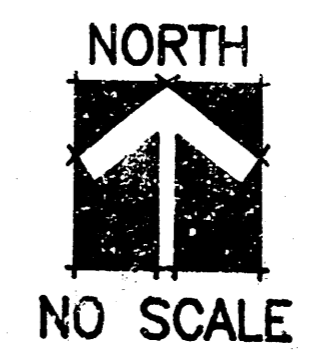
| VALVE | STATION | TYPE | VALVE SIZE | GPM | PHASE |
|-------|---------|-----------------|------------|-------|-------|
| 5D | 4 | 4" POP-UP SPRAY | 2" | 84.25 | 8 |
| 5E | 5 | 4" POP-UP SPRAY | 2" | 86.5 | 8 |
| 5F | 6 | 4" POP-UP SPRAY | 2" | 86.17 | 8 |
| 5G | 7 | 2045A MAND-PW | 1.5" | 31.7 | 8 |
| 5H | 8 | R-70 FC | 2" | 84.0 | 2 |
| 5I | 9 | R-70 FC | 2" | 70.0 | 2 |
| 5J | 10 | R-70 FC | 2" | 70.0 | 2 |
| 5K | 11 | R-70 FC | 2" | 86.0 | 2 |
| 5L | 12 | R-70 FC | 2" | 86.7 | 2 |



KELLOGG AND RIDGE INTERCHANGE

IRRIGATION PLAN MASTER KEY

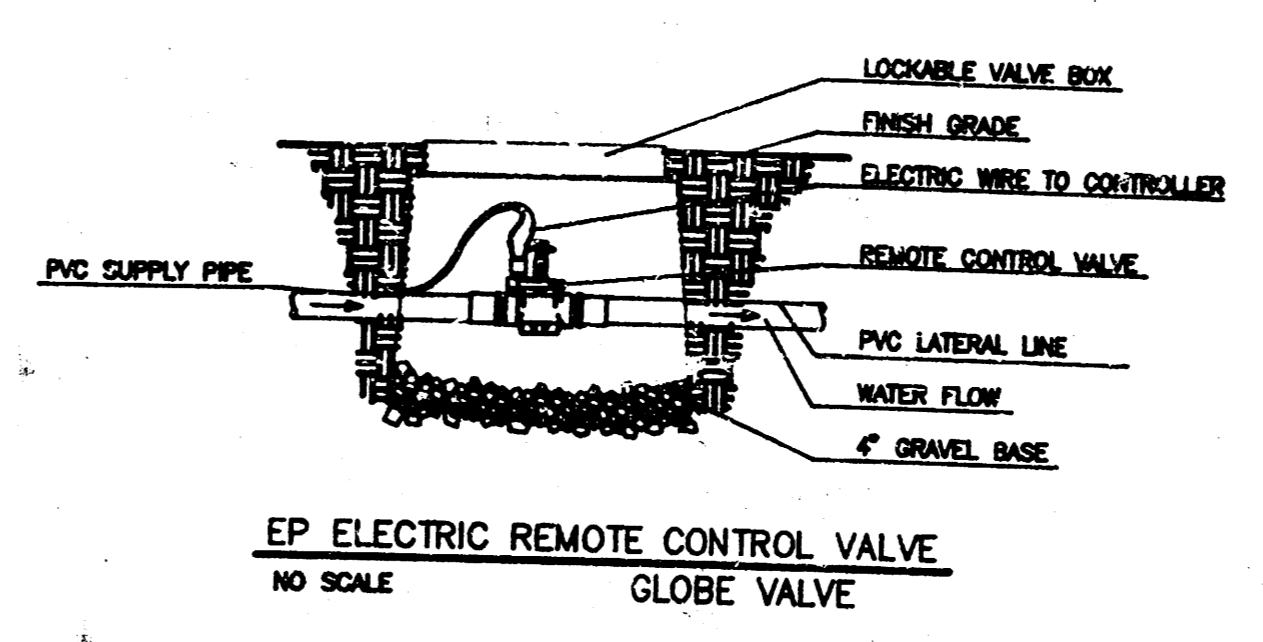
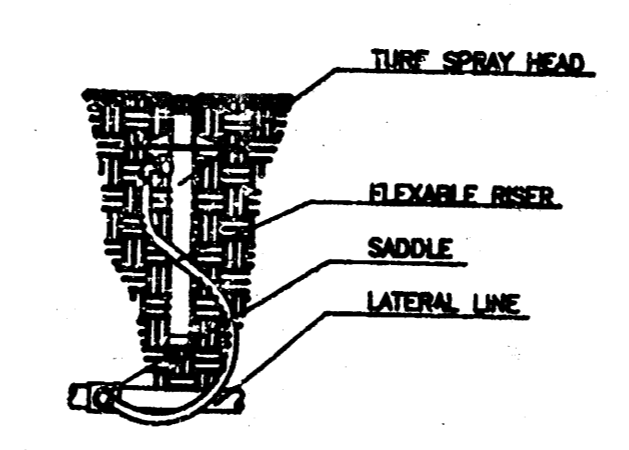
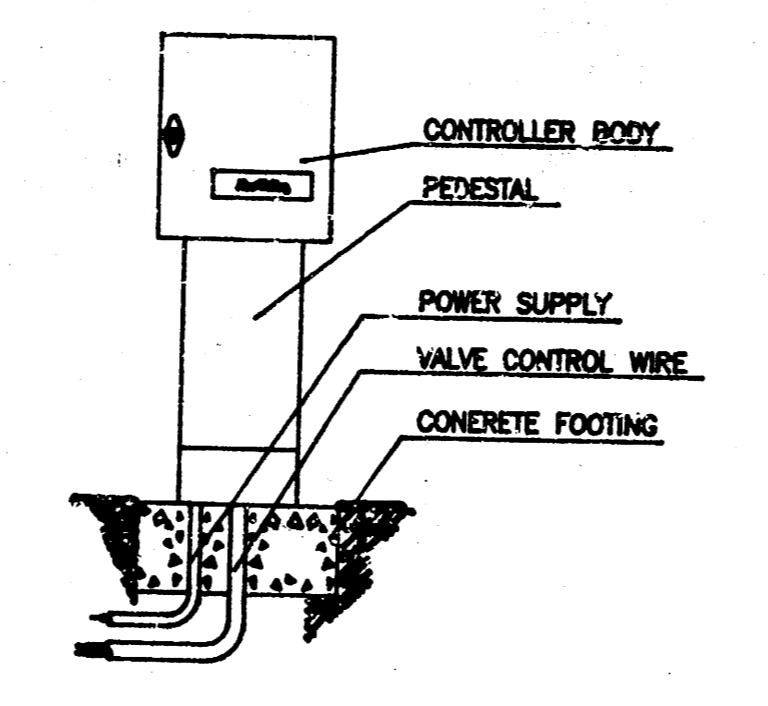
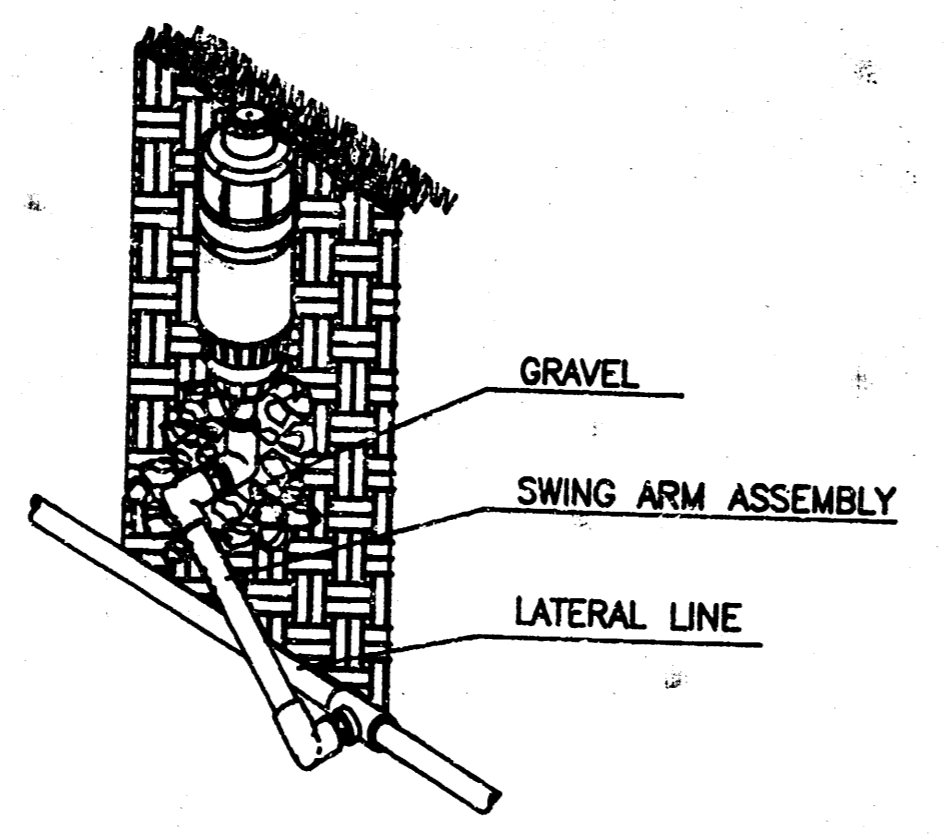
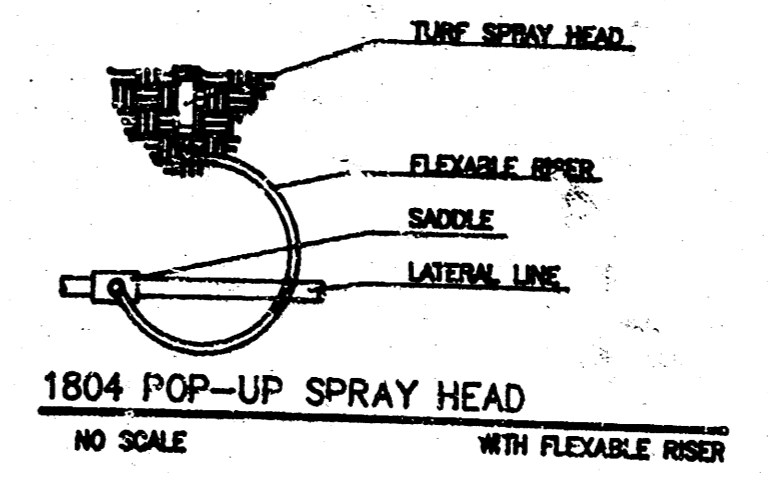
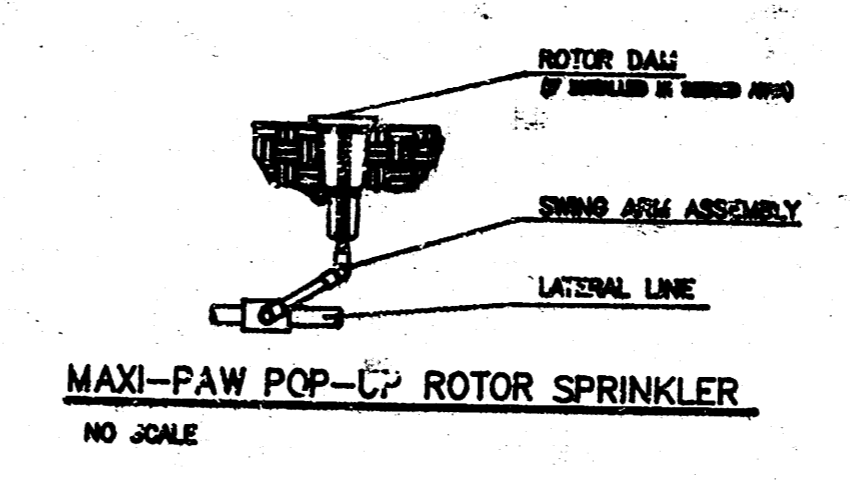
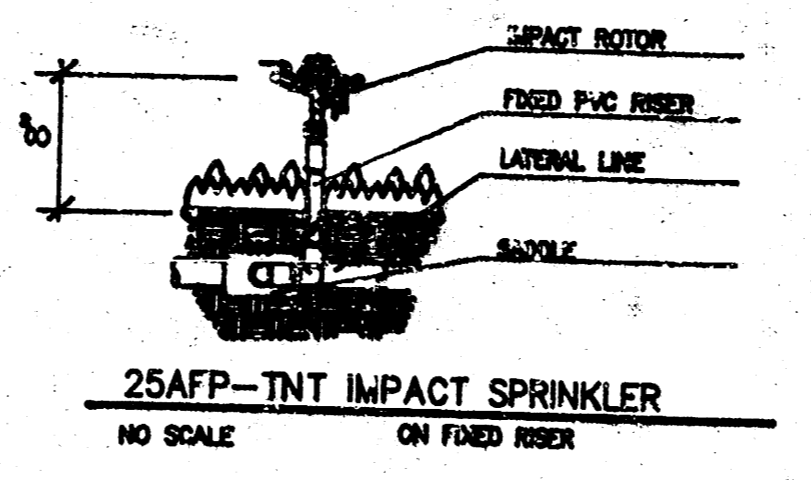
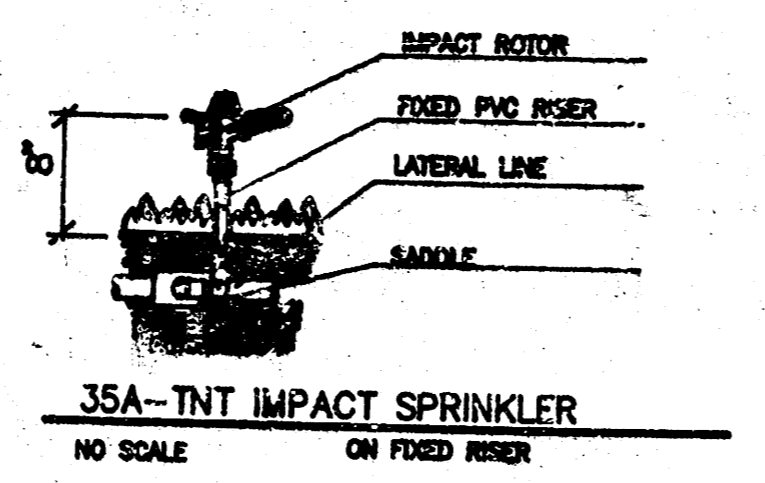
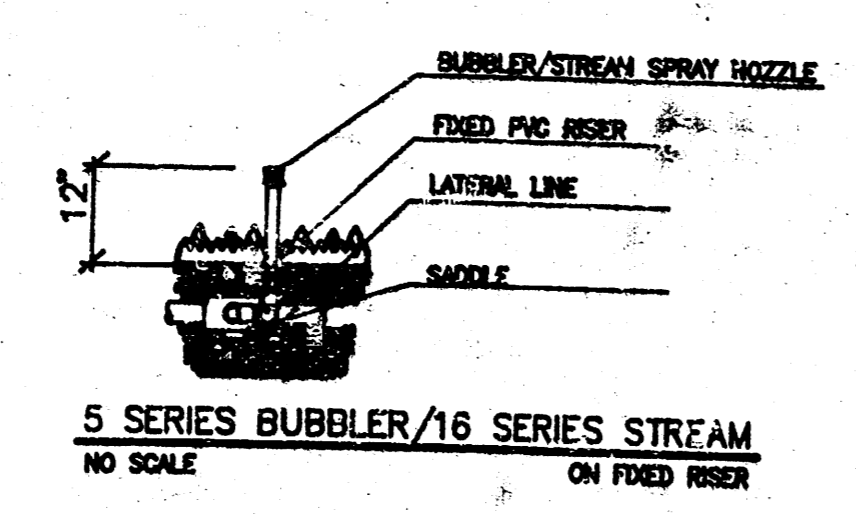
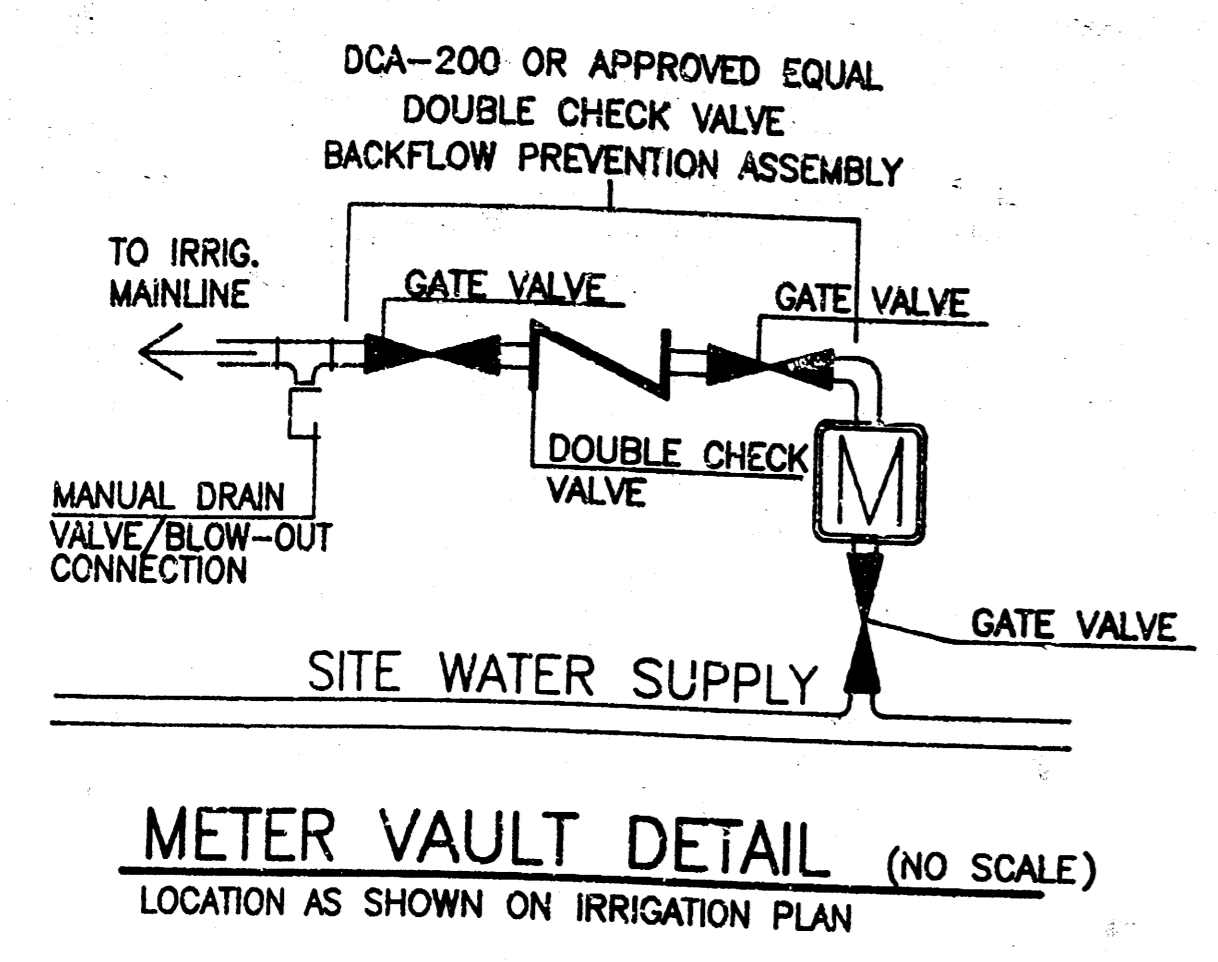
NO SCALE



Site
 Site
 Site
 Site
 Planning Associates
 Planning Associates
 Planning Associates
 Sheet No.
 project no: 0338
 drawn by: L. ENGLER
 date: 12-20-89

IK of 1

12-19-89
 4338-817
 #0338/WELLOGG & RIDGE INTERCHANGE/WICHITA, KS



GENERAL NOTES:

ALL IRRIGATION WORK DONE BY CONTRACTOR IS TO BE IN COMPLIANCE WITH LOCAL CODES AND REGULATIONS.

IRRIGATION PLAN IS A SCHEMATIC DRAWING TO REPRESENT DESIRED WATER COVERAGE. FIELD ADJUSTMENTS MAY BE NECESSARY TO AVOID UNFORESEEN OBSTACLES AND SIMPLY INSTALLATION.

CONTRACTOR WILL VERIFY STATIC PRESSURE AND VOLUME OF SITE WATER SUPPLY AND INSTALL IRRIGATION SYSTEM ACCORDINGLY.

EACH ZONE OF IRRIGATION SYSTEM IS TO BE DESIGNED WITH A MAXIMUM OF 110 GALLONS PER MINUTE.

IRRIGATION WATER METER, GATE (OR GLOBE) VALVE, DOUBLE CHECK VALVE AND MANUAL DRAIN VALVE ARE TO BE LOCATED IN 4 AREAS AS SHOWN ON PLAN. IRRIGATION CONTRACTOR SHALL BE RESPONSIBLE FOR ABOVE ITEMS MINUS METER.

SYSTEM IS TO CONSIST OF SEPARATE SHRUB STREAM ZONES, SPRAY HEAD ZONES, IMPACT ROTORS, IMPACT SPRINKLERS AND BUBBLER ZONES. EACH WITH SEPARATE VALVES AND STATIONS ON THE CONTROLLER.

CONTROLLER(S) ARE TO BE A RAIN BIRD RC-2360 23 STATION OR RAIN BIRD RC-1860 18 STATION ELECTROMECHANICAL TYPE (SEE PLAN) WITH DUAL PROGRAMMING. FIVE CONTROLLERS ARE TO BE LOCATED AS SHOWN ON IRRIGATION PLANS. SEE CONTROLLER SCHEDULES FOR NUMBER OF STATIONS AND THE ZONES ASSOCIATED WITH EACH CONTROLLER.

CONTROLLERS ARE TO BE INSTALLED AS PER PHASING SEQUENCE. CONTROLLERS 2 AND 3 ARE TO BE INSTALLED IN PHASE 1, CONTROLLER 5 IN PHASE 2, AND CONTROLLERS 1 AND 4 IN PHASE 3.

IRRIGATION CONTROLLERS SHALL BE PLACED BESIDE CONCRETE RETAINING WALL IN LOCATIONS ALONG KELLOGG UNDERPASS. ELECTRICAL SERVICE TO IRRIGATION CONTROLLERS SHALL BE PROVIDED BY THE CITY OF WICHITA.

FIXED RISER IMPACT SPRINKLERS ARE TO BE INSTALLED AT A HEIGHT OF 8" ABOVE FINISHED GRADE.

FIXED RISER SHRUB BUBBLER SPRAYS ARE TO BE INSTALLED AT A HEIGHT OF 12" ABOVE FINISHED GRADE.

STREAM BUBBLERS LOCATED IN GROUNDCOVER BEDS ARE TO BE INSTALLED ON FIXED RISERS 12" ABOVE FINISHED GRADE. POP-UP SPRAY NOZZLES LOCATED IN GROUNDCOVER BEDS SHALL BE INSTALLED ON 1812 POP-UP SPRINKLER BODIES.

PROPOSED MAIN LINE IS TO BE INSTALLED IN PHASED ORDER SEE PLANS FOR INFORMATION.

AUTOMATIC DRAIN VALVES ARE TO BE LOCATED AT THE END OF IRRIGATION LATERAL LINES. MANUAL DRAIN VALVES ARE TO BE LOCATED AT THE LOW POINTS OF SUPPLY LINE. BOTH TYPES OF DRAINS ARE TO BE PLACED ON TOP OF ONE CUBIC FOOT OF GRAVEL FILL. MANUAL VALVES ARE TO BE PLACED IN LATCHABLE VALVE BOX FOR EASY ACCESSIBILITY.

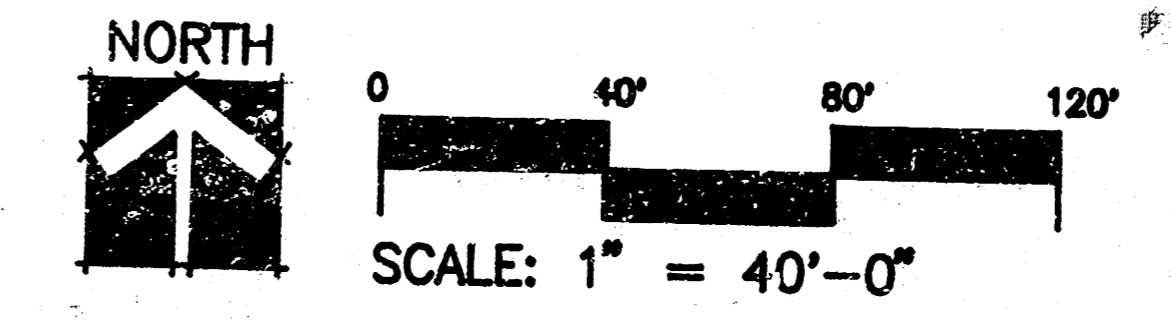
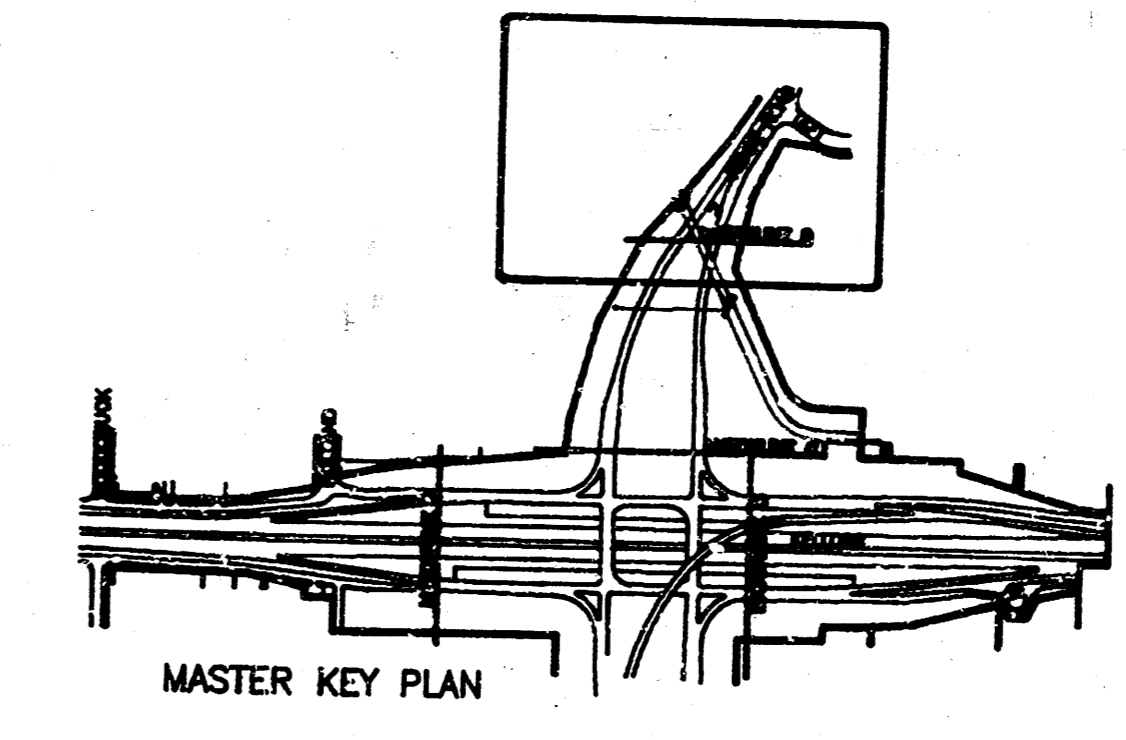
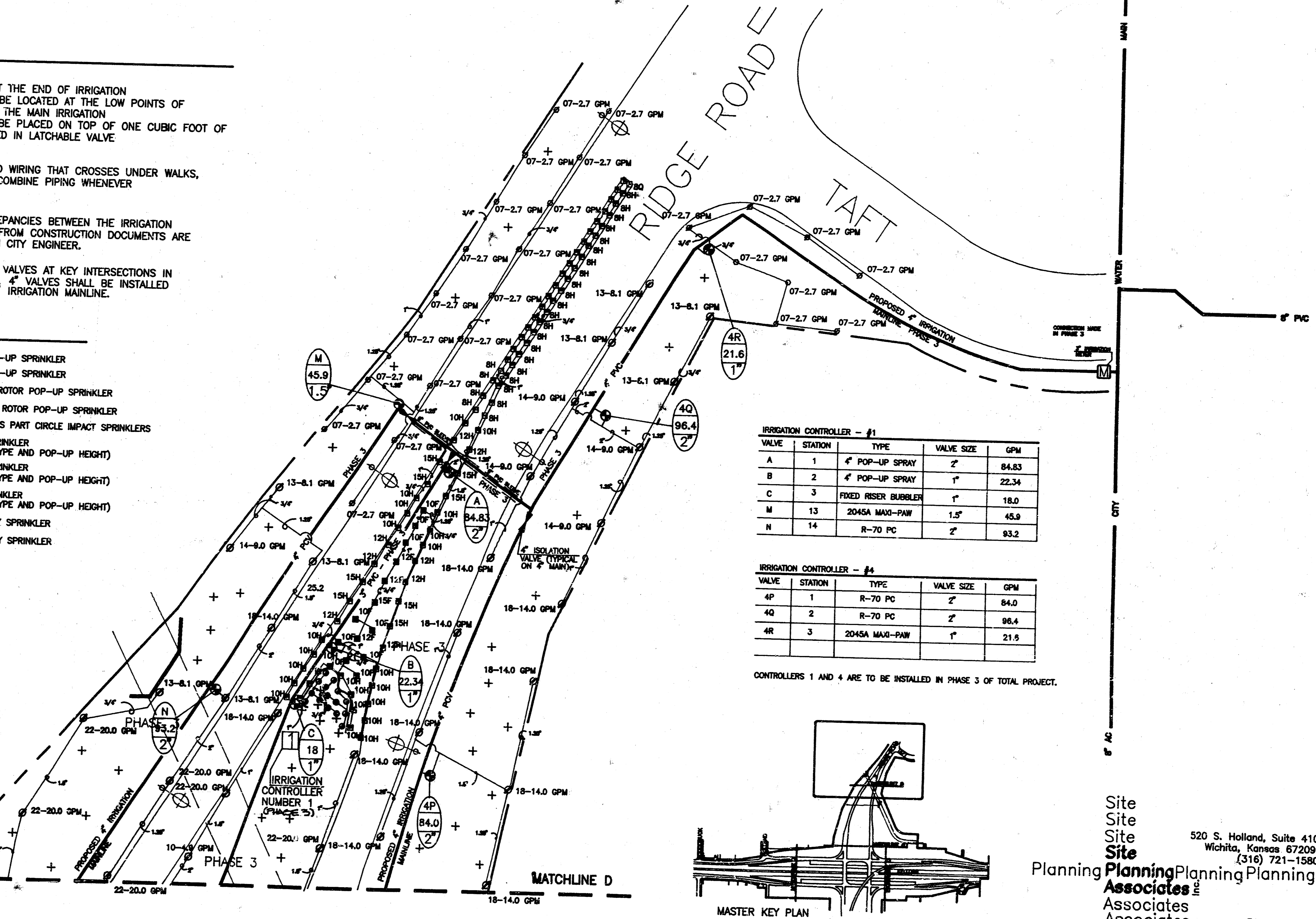
PROVIDE PVC SLEEVES FOR IRRIGATION PIPES AND WIRING THAT CROSSES UNDER WALKS, AND STREETS AS SHOWN ON IRRIGATION PLAN. COMBINE PIPING WHENEVER POSSIBLE TO SAVE ON SLEEVING MATERIALS.

NOTIFY THE CITY ENGINEER OF ANY MAJOR DISCREPANCIES BETWEEN THE IRRIGATION PLANS AND THE FIELD LAYOUT. ANY DEVIATIONS FROM CONSTRUCTION DOCUMENTS ARE TO BE MADE ONLY WITH WRITTEN APPROVAL FROM CITY ENGINEER.

IRRIGATION CONTRACTOR SHALL INSTALL ISOLATION VALVES AT KEY INTERSECTIONS IN IRRIGATION MAINLINES. SEE LOCATIONS ON PLAN. 4" VALVES SHALL BE INSTALLED ON 4" MAINLINE AND 3" VALVES INSTALLED ON 3" IRRIGATION MAINLINE.

LEGEND:

- RAIN BIRD R-70 FULL CIRCLE ROTOR POP-UP SPRINKLER
- RAIN BIRD R-70 PART CIRCLE ROTOR POP-UP SPRINKLER
- RAIN BIRD MAXI-PAW FULL CIRCLE IMPACT ROTOR POP-UP SPRINKLER
- RAIN BIRD MAXI-PAW PART CIRCLE IMPACT ROTOR POP-UP SPRINKLER
- RAIN BIRD 35A-TNT AND 25AFP-TNT SERIES PART CIRCLE IMPACT SPRINKLERS
- 360° RAIN BIRD 1800 SERIES POP-UP SPRINKLER (SEE ZONE SCHEDULE FOR NOZZLE TYPE AND POP-UP HEIGHT)
- 180° RAIN BIRD 1800 SERIES POP-UP SPRINKLER (SEE ZONE SCHEDULE FOR NOZZLE TYPE AND POP-UP HEIGHT)
- 90° RAIN BIRD 1800 SERIES POP-UP SPRINKLER (SEE ZONE SCHEDULE FOR NOZZLE TYPE AND POP-UP HEIGHT)
- END STRIP RAIN BIRD 1804 POP-UP SPRAY SPRINKLER
- SIDE STRIP RAIN BIRD 1804 POP-UP SPRAY SPRINKLER
- 360° FIXED RISER SHRUB BUBBLER
- 180° FIXED RISER SHRUB BUBBLER
- 360° FIXED RISER STREAM SPRAY HEAD
- 180° FIXED RISER STREAM SPRAY HEAD
- AUTOMATIC VALVE
- ISOLATION GATE VALVE
- CONTROLLER
- WATER METER
- VALVE NAME (CONTROLLER NUMBER/VALVE)
- VOLUME OF WATER
- VALVE SIZE
- MAIN LINE (PVC CLASS 200)
- IRRIGATION LATERAL (PVC CLASS 160)
- PIPE SIZE
- PVC SLEEVE (SCHEDULE 40)



KELLOGG AND RIDGE INTERCHANGE

Site
 Site
 Site
 Site
 Planning
 Associates
 Associates
 Associates

520 S. Holland, Suite 410
 Wichita, Kansas 67209
 (316) 721-1580

project no: #0338
 drawn by: L. ENGLER
 date: 12-19-89

Sheet No. 11 of 5

FILMED FROM THE BEST AVAILABLE COPY

