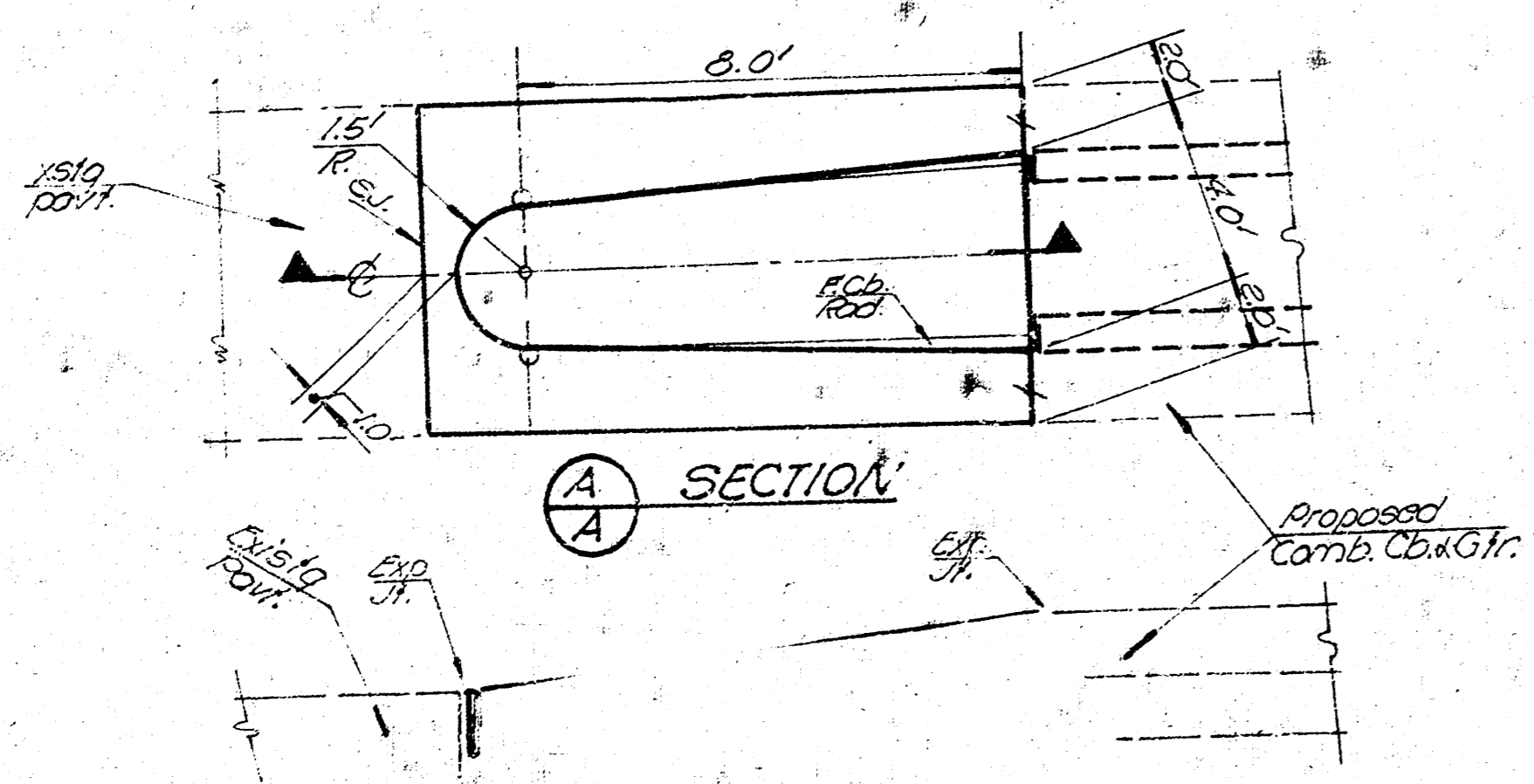
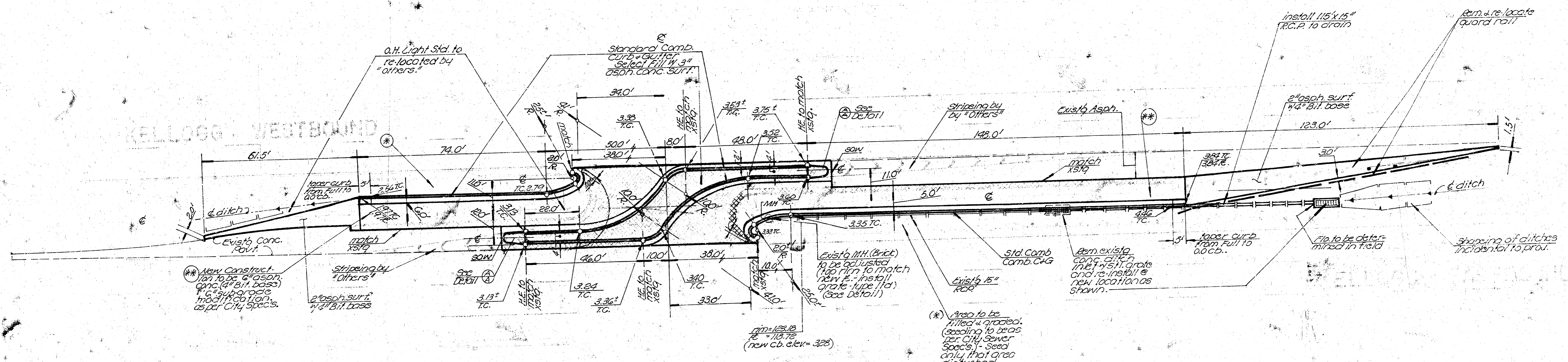


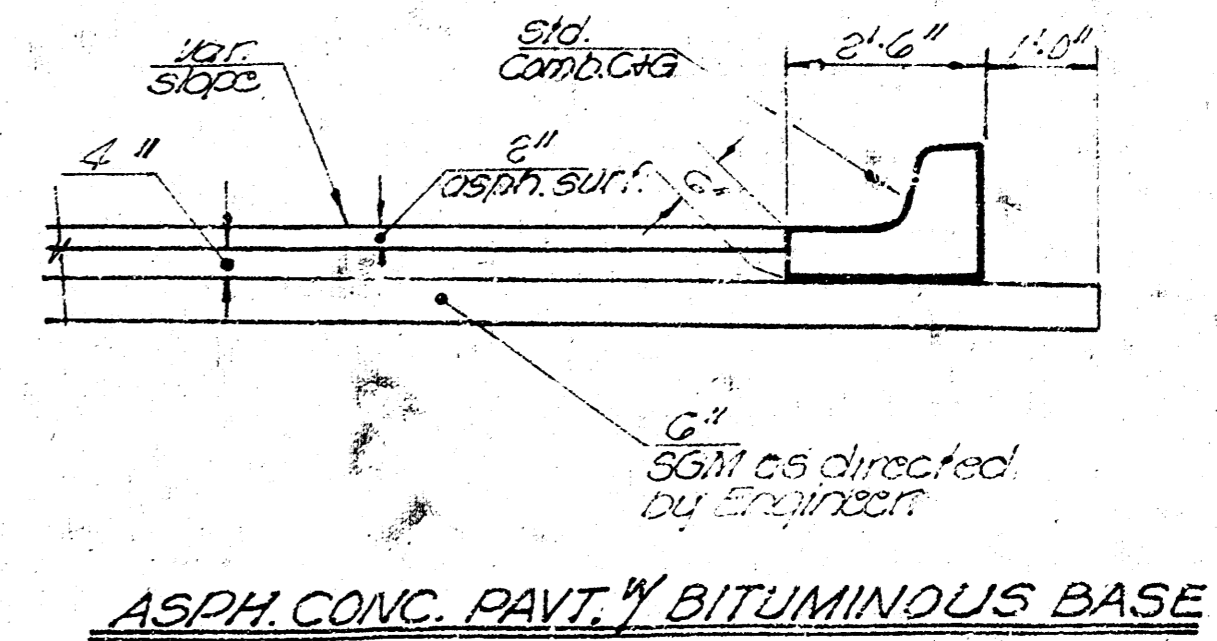
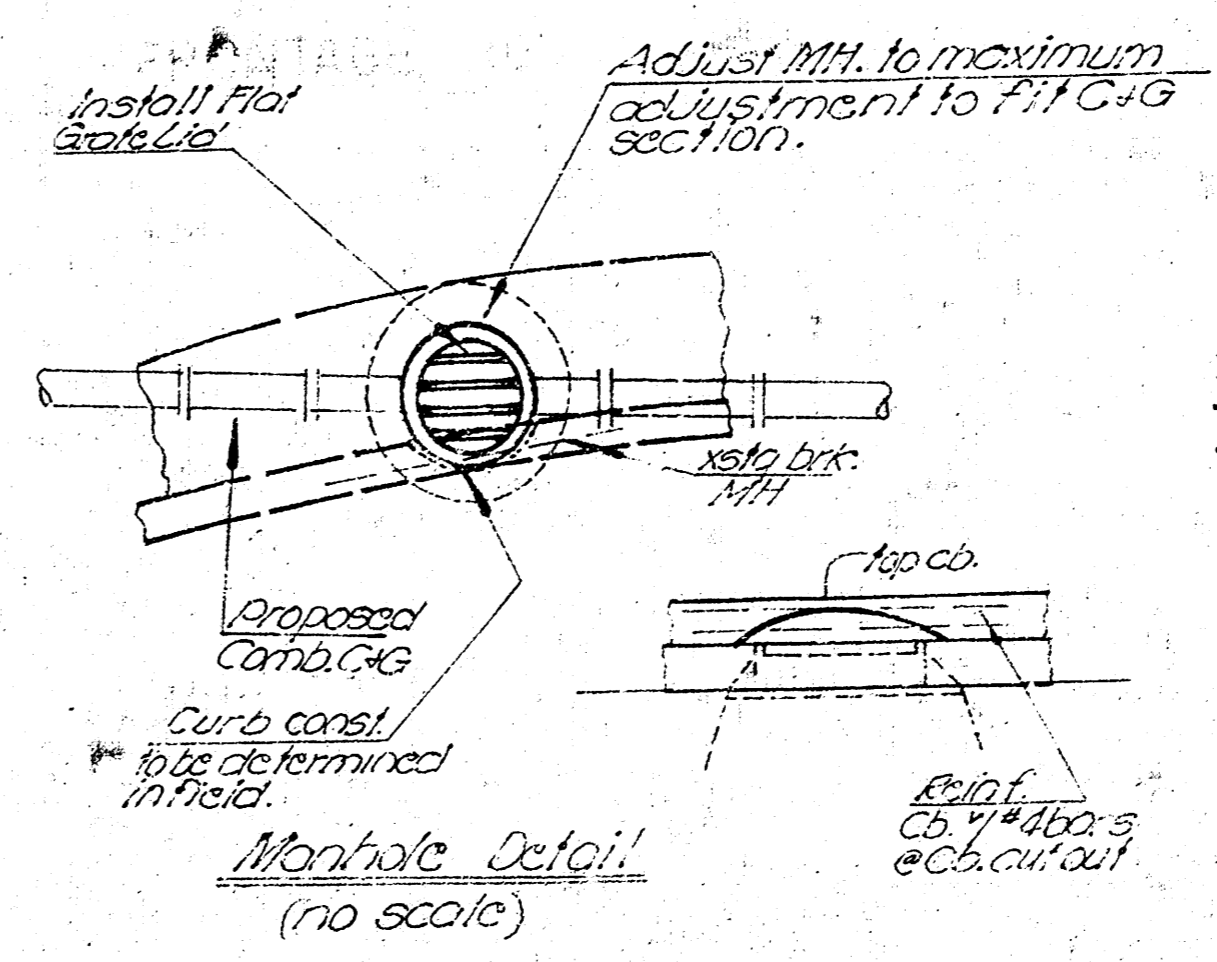
BM 12244 City St. 102' E. of Hoover / 22' S. of St. W. Co. to turn bay in dir. U.S. 54 N.W.

DATE: 2/20/07
 DRAWN BY: [Signature]
 CHECKED BY: [Signature]



NOTE - Do not scale, use measured dists.

█ = Comb. C&Gt. and Conc. Pavt. Removal
 Note to Contractor - It will be necessary to obtain a construction permit from Kansas Dept. of Transportation before any construction.
 BEFORE BEGINNING THIS WORK, PLEASE NOTIFY - K.D.O.T. AREA MAINTENANCE SUPERINTENDENT, MR. W. R. SCOTT IN WICHITA, KANSAS.



City of Wichita, Kansas
 MEDIA L RECONSTRUCTION
 6" Asp. Conc. Pavt. w/ Comb C&G
 R.W. Linn City Engineer
 Date: _____ Prod. No. 5415 00170