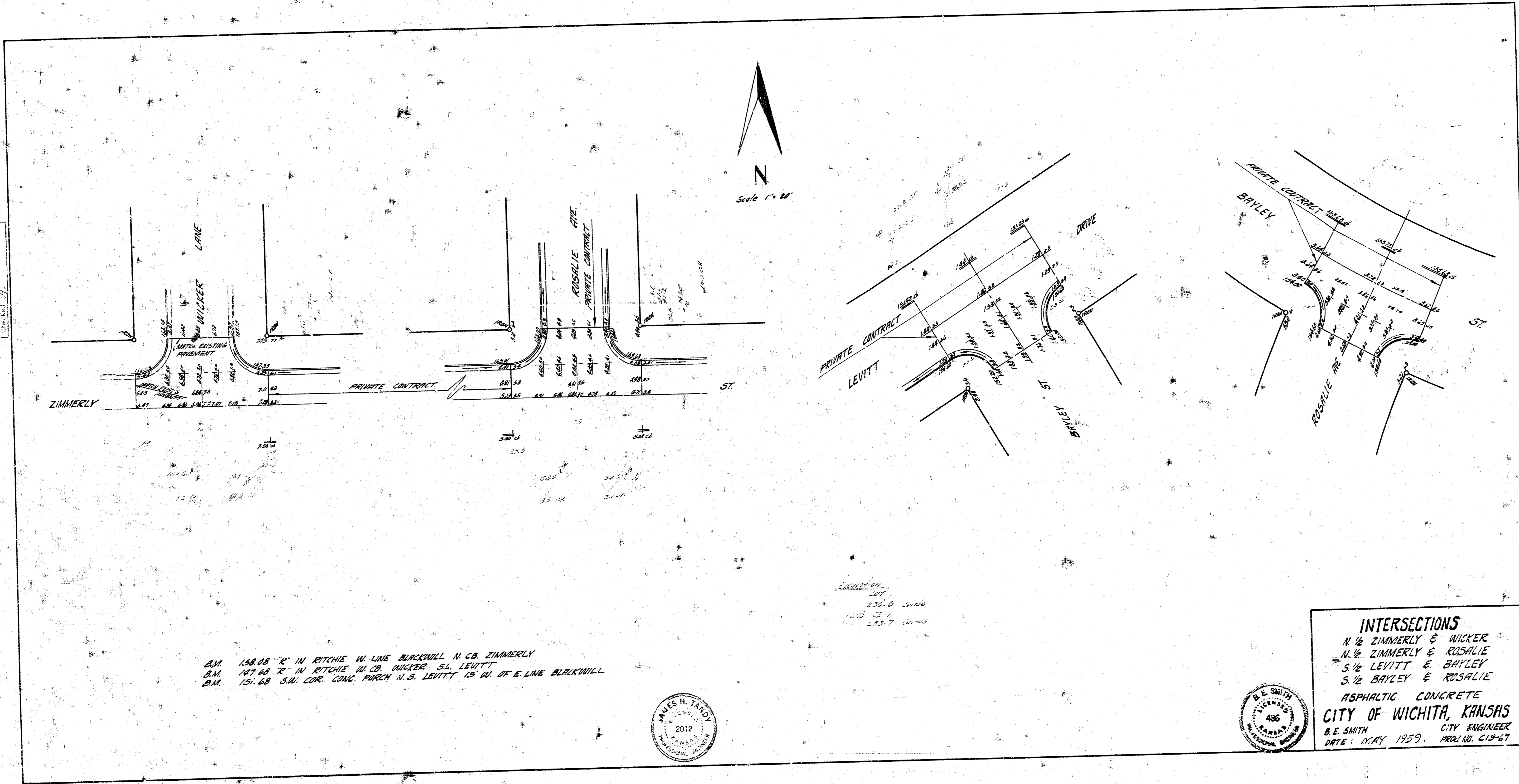
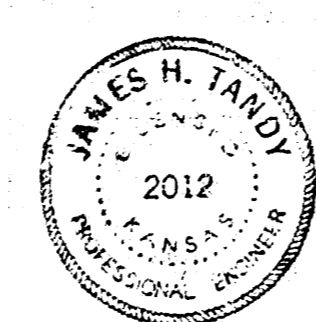


B. E. SMITH
 CIVIL ENGINEER
 436
 1714 N. W. 23rd St.
 WICHITA, KANSAS



B.M. 158.08 "K" IN RITCHIE W. LINE BURKWOOD N. CO. ZIMMERLY
 B.M. 147.63 "R" IN RITCHIE W. CO. WICKER S. LEVITT
 B.M. 151.68 S.W. COR. CONC. PARCH N.S. LEVITT 15' W. OF E. LINE BURKWOOD

ELEVATIONS
 207
 230.0 240.0
 100.0 110.0
 255.7 260.0



INTERSECTIONS
 N. 1/2 ZIMMERLY & WICKER
 N. 1/2 ZIMMERLY & ROSALIE
 S. 1/2 LEVITT & BAYLEY
 S. 1/2 BAYLEY & ROSALIE
 ASPHALTIC CONCRETE
 CITY OF WICHITA, KANSAS
 B. E. SMITH CITY ENGINEER
 DATE: MAY 1959. PROJ. NO. C12-67