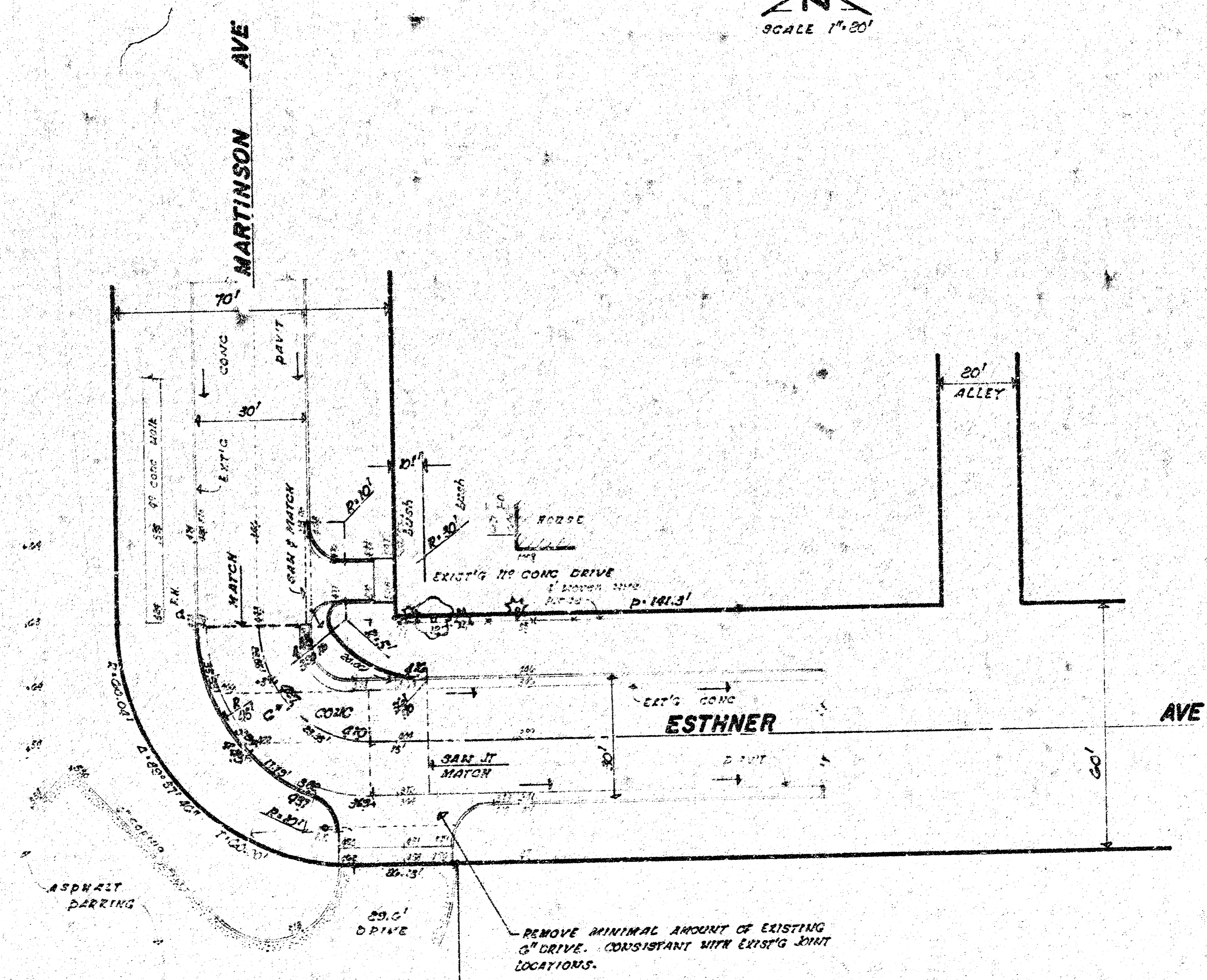


E.M. 106-68 N.W. COR BOTTOM CONC STEP HOUSE # 1752 MARTINSON. N.E. COR MARTINSON & ESTHNER
 S.N. 107-35 "SI" IN LUDLOW FIRE HYD N.W. CORNER MARTINSON AND ESTHNER.



STANLEY SCHOOL

ALLEY PARK

RECONSTRUCTION OF THE INTERSECTION OF MARTINSON AND ESTHNER.

CITY OF WICHITA, KANSAS

6" REINF CONCRETE PAVEMENT w/ INTEGRAL CURB.

DEAN SELLERS, Acting City Engineer

Proj. No. 472-76-245-80852000-000-000

