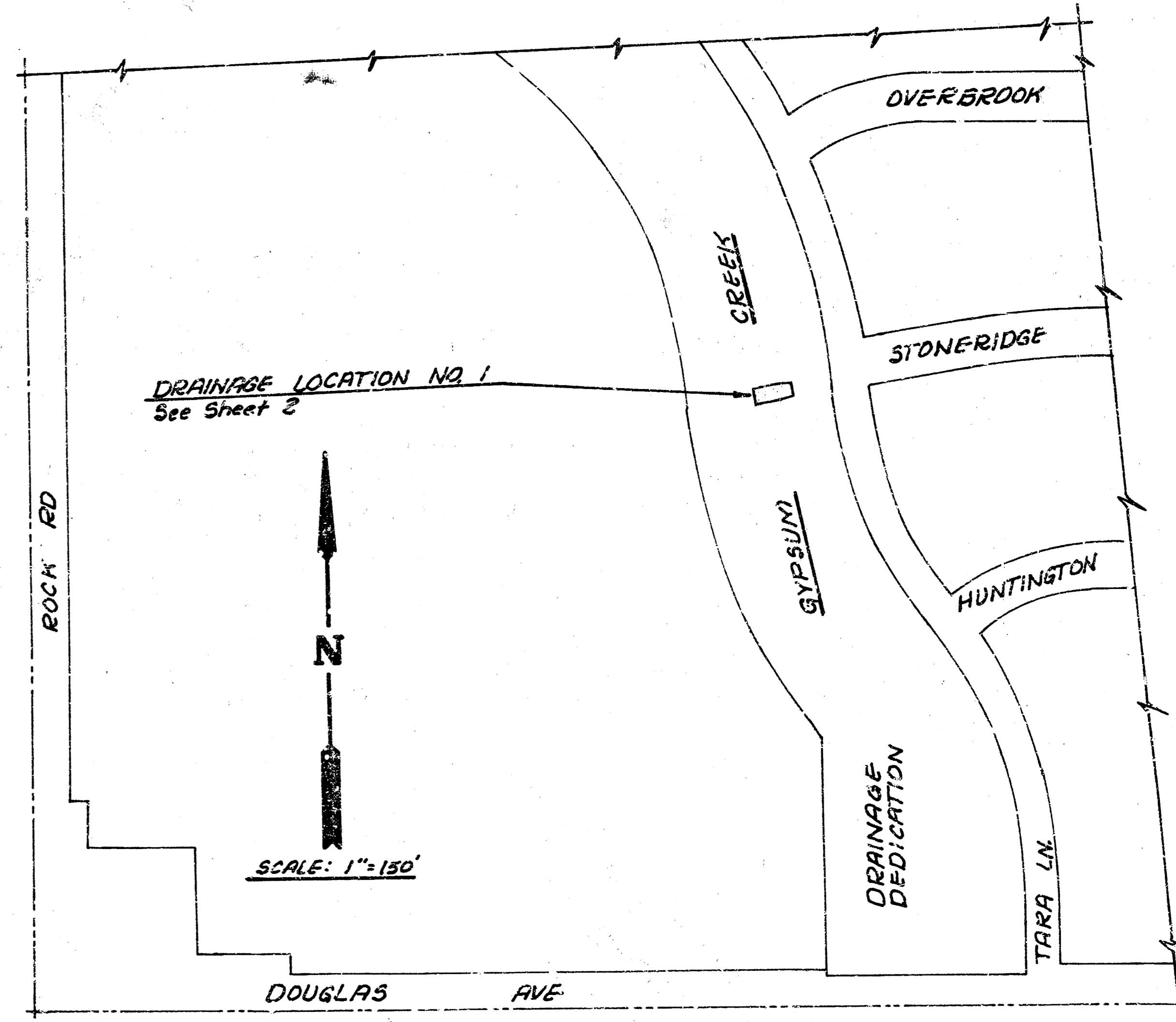
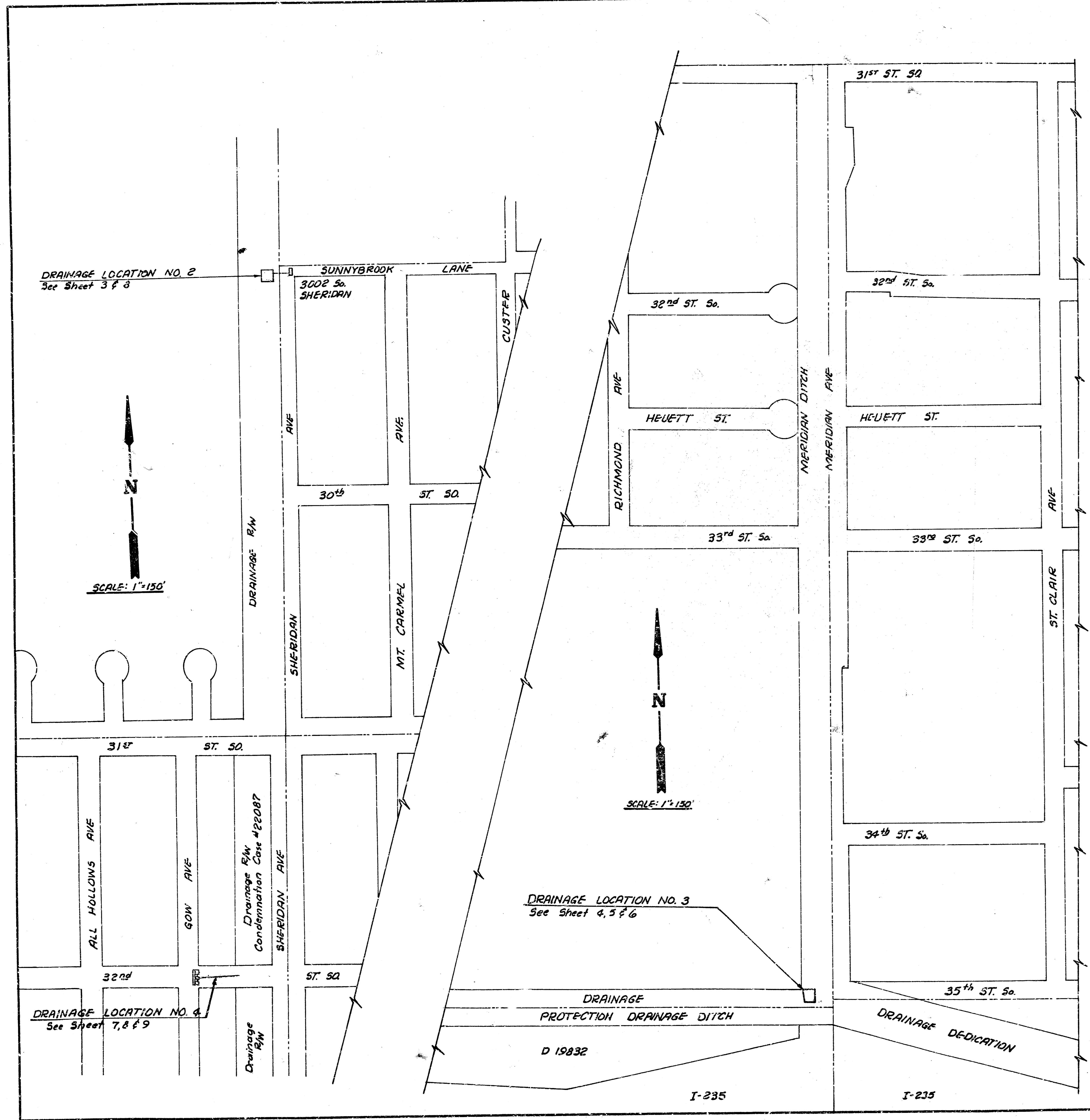


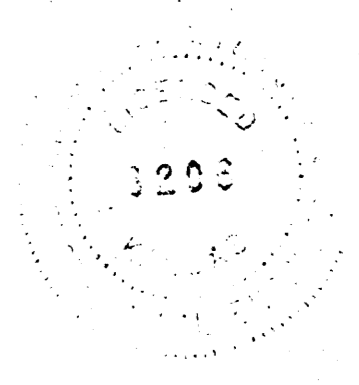
ALTER, REPAIR, OR RECONSTRUCT A PORTION OF THE FOLLOWING STORM SEWERS: GYPSUM CREEK, TARA TO STONERIDGE; SHERIDAN DRAIN AT 3002 S. SHERIDAN; MERIDIAN DITCH AT 33RD ST. AND 35TH ST.; 32ND ST. AND SHERIDAN DITCH (WEST BANK).



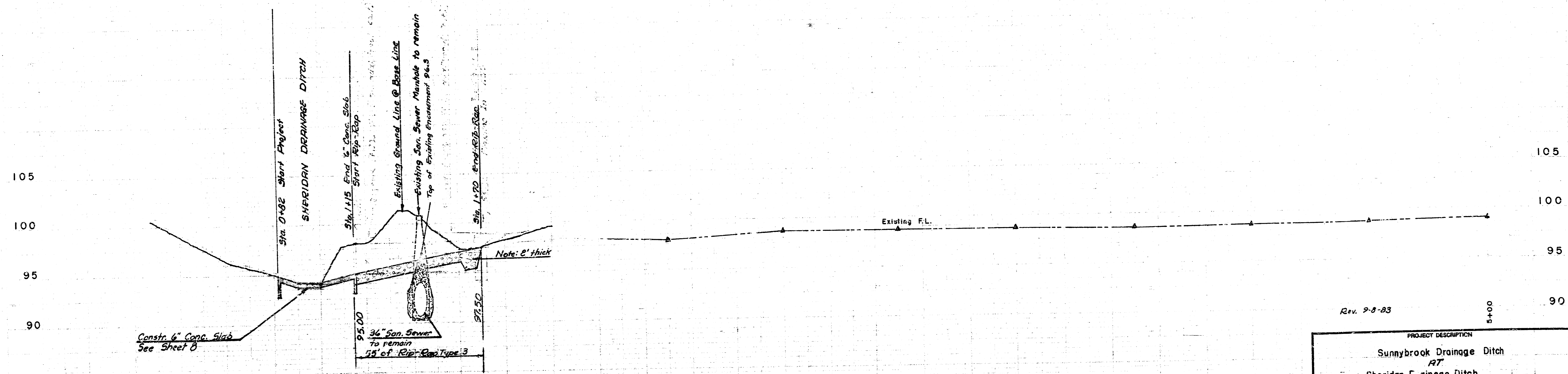
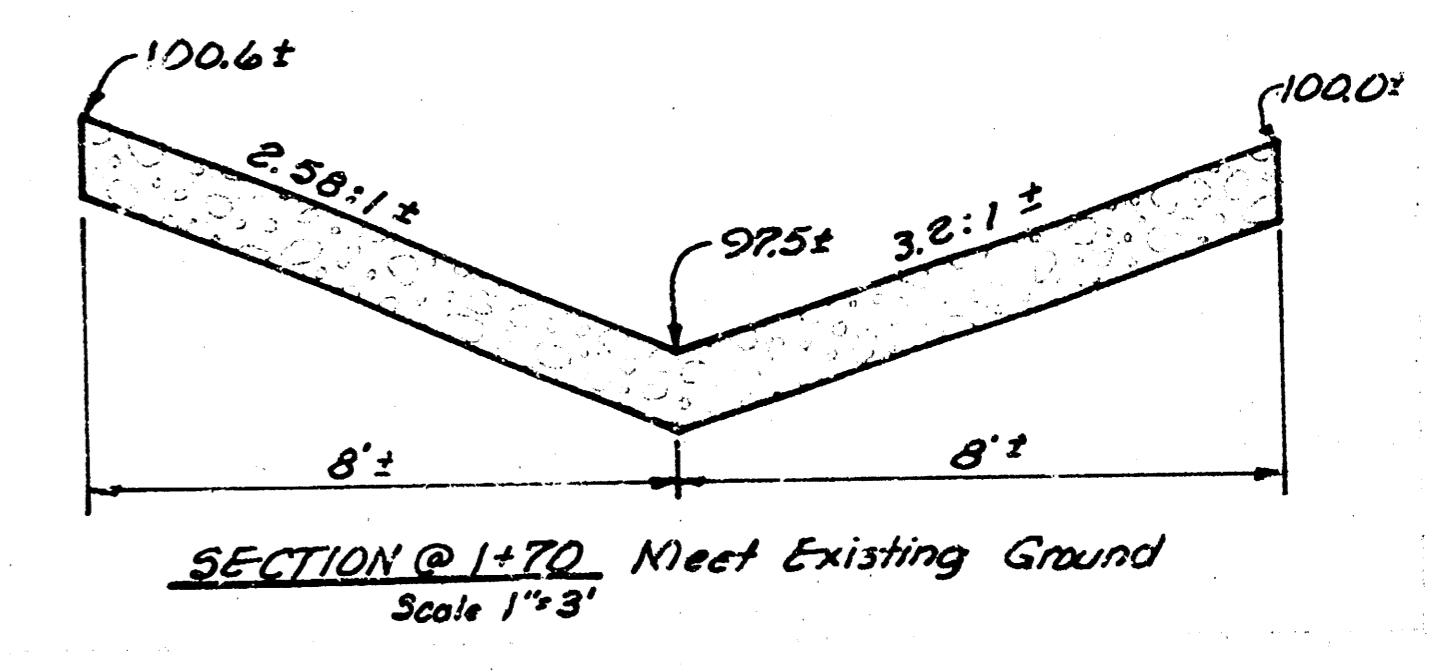
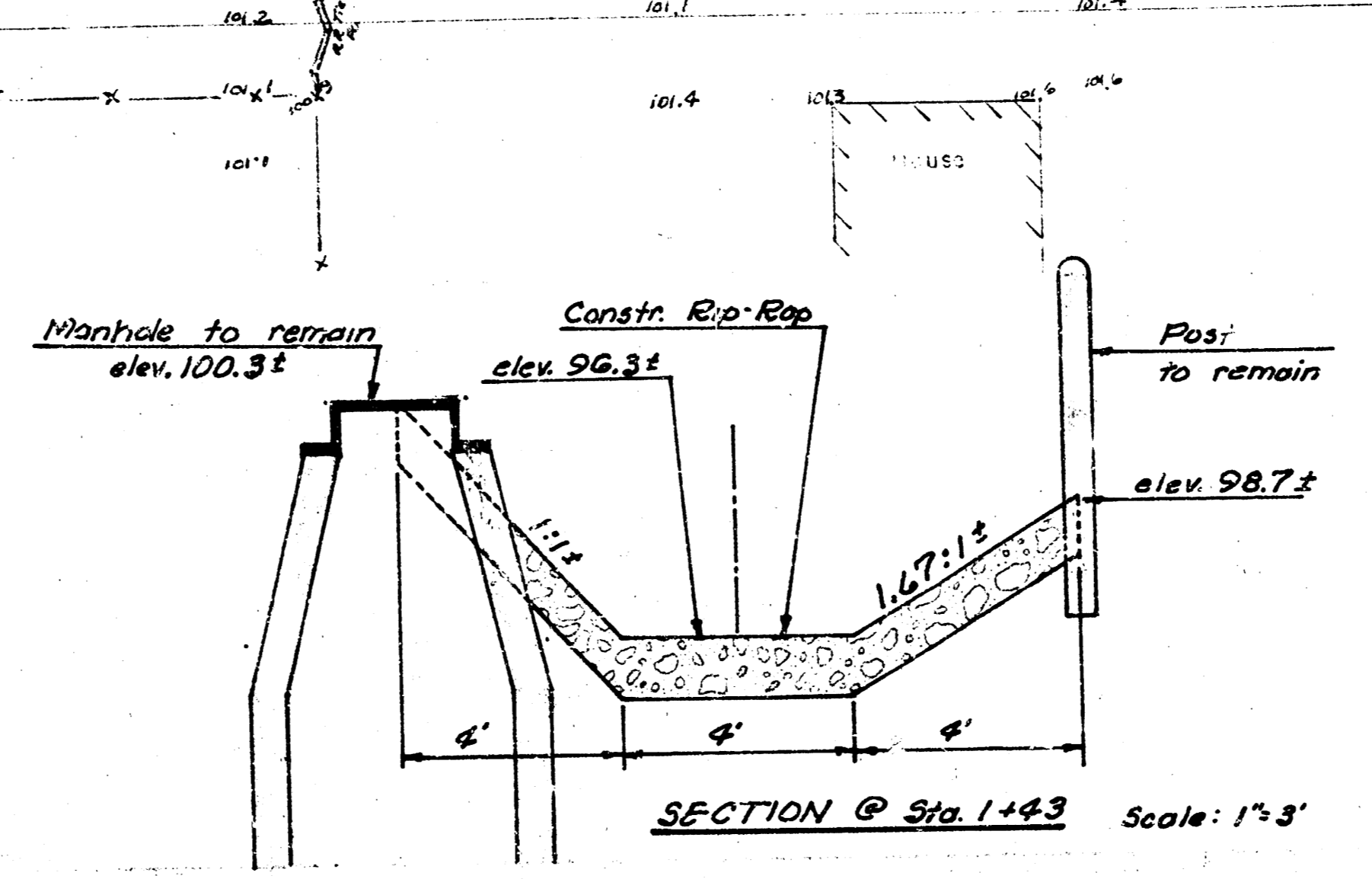
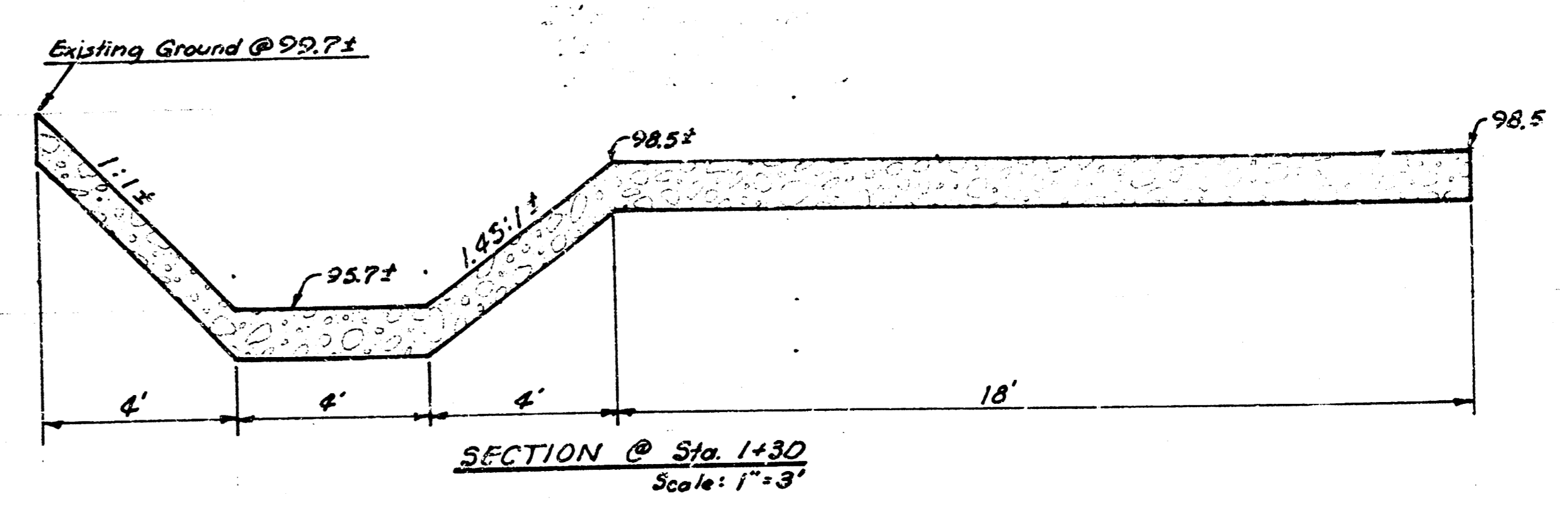
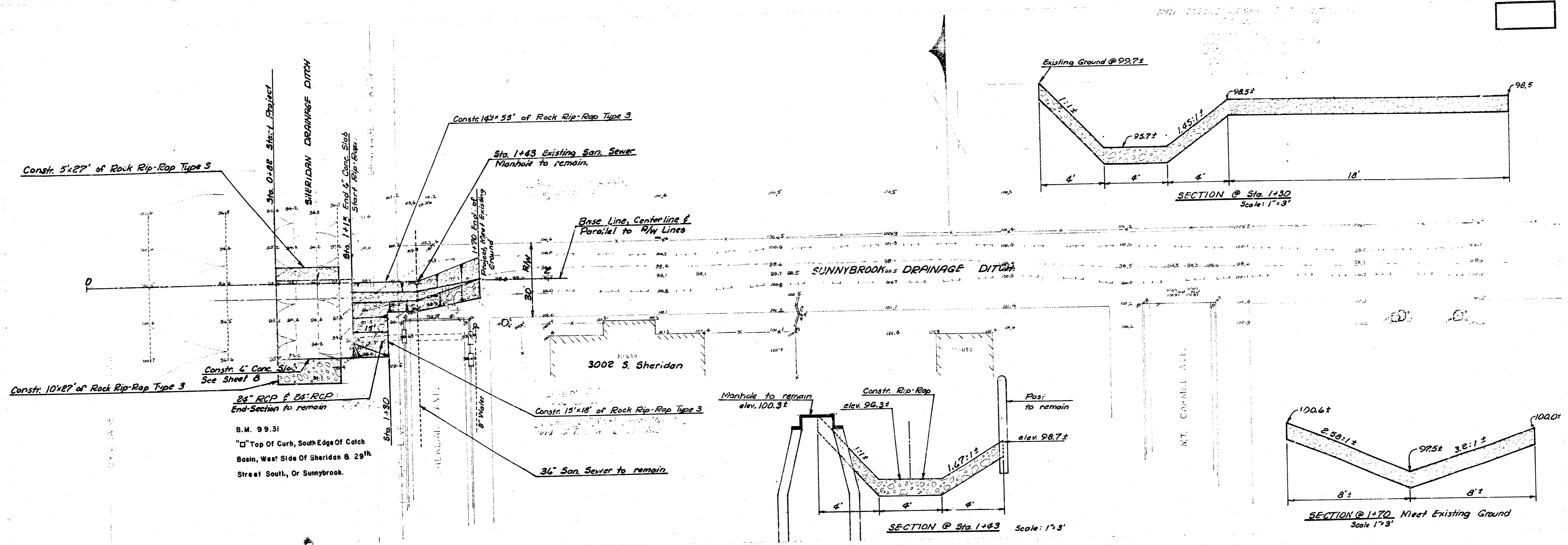
NOTE: Storm sewer inspection for 36" and smaller pipes shall be by televising.

Precast inlet tops shall have a coating of linseed oil placed on all surfaces prior to placing the top on the inlet. Concrete shall be Air Entrained.

PROJECT DESCRIPTION	
RECONSTRUCT SWS's	
PROJECT NUMBER 468-76-245-81232-000-000-001	
BOOK NO.	APPROVED BY
DRAWN BY WSK	DATE 7-83
CITY OF WICHITA DEPARTMENT OF ENGINEERING	
DIRECTOR OF ENG./CITY ENGINEER R. W. BRUGGEMAN	
Sheet 1 of 9	

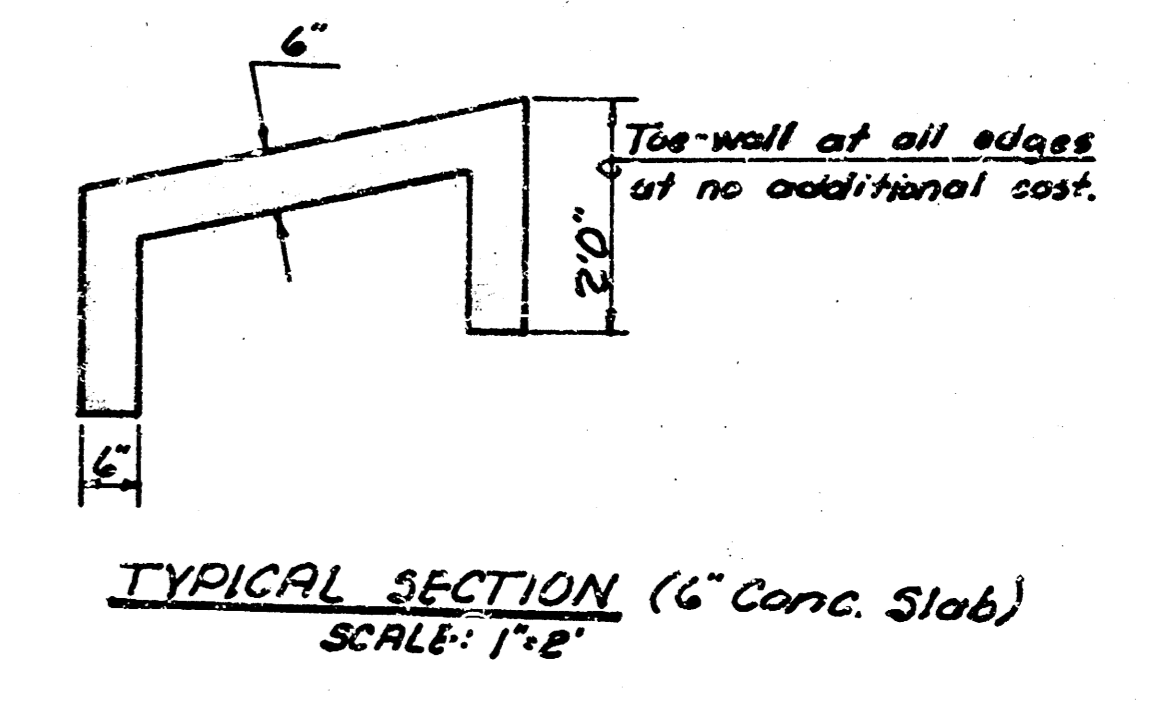
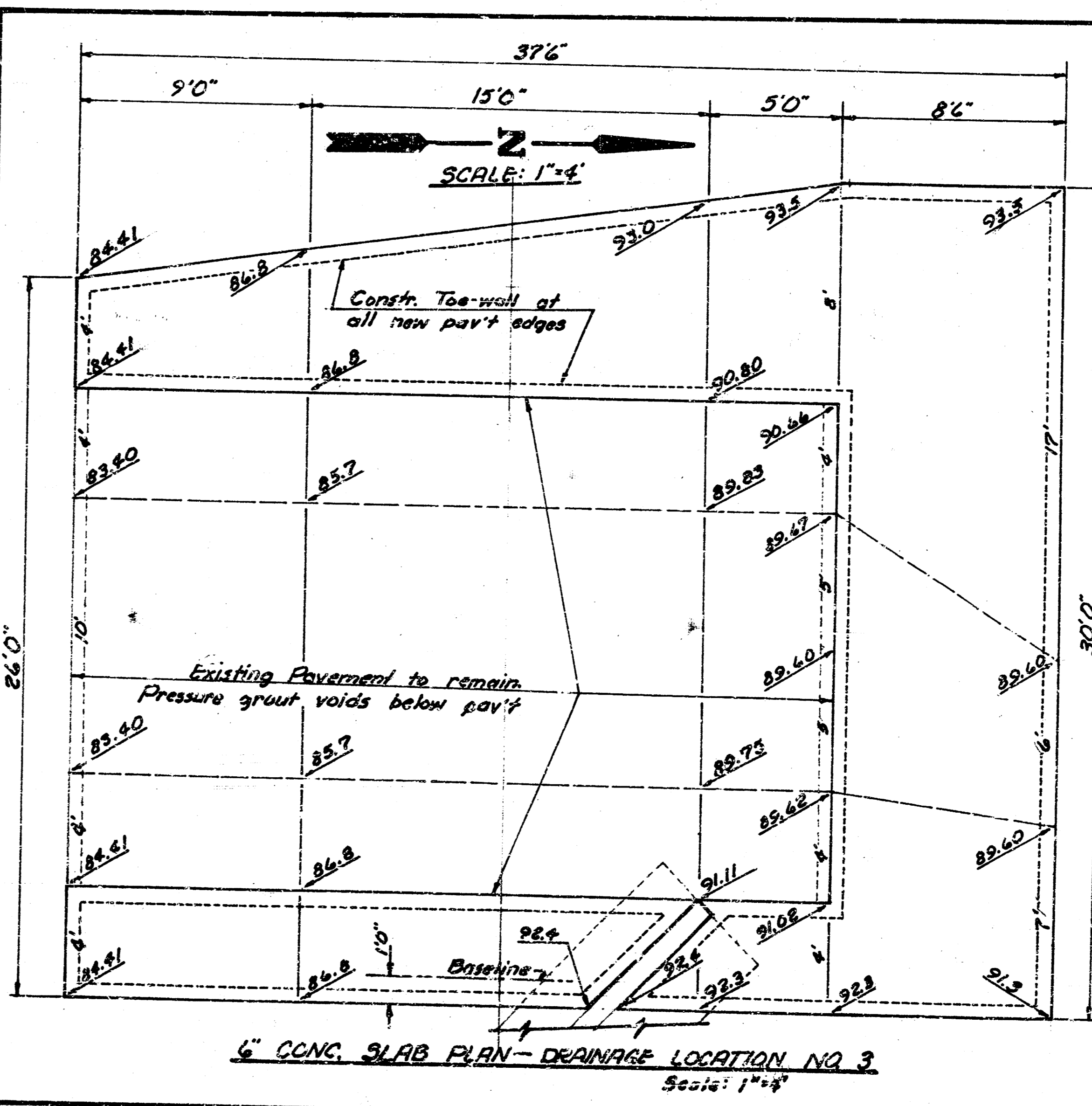
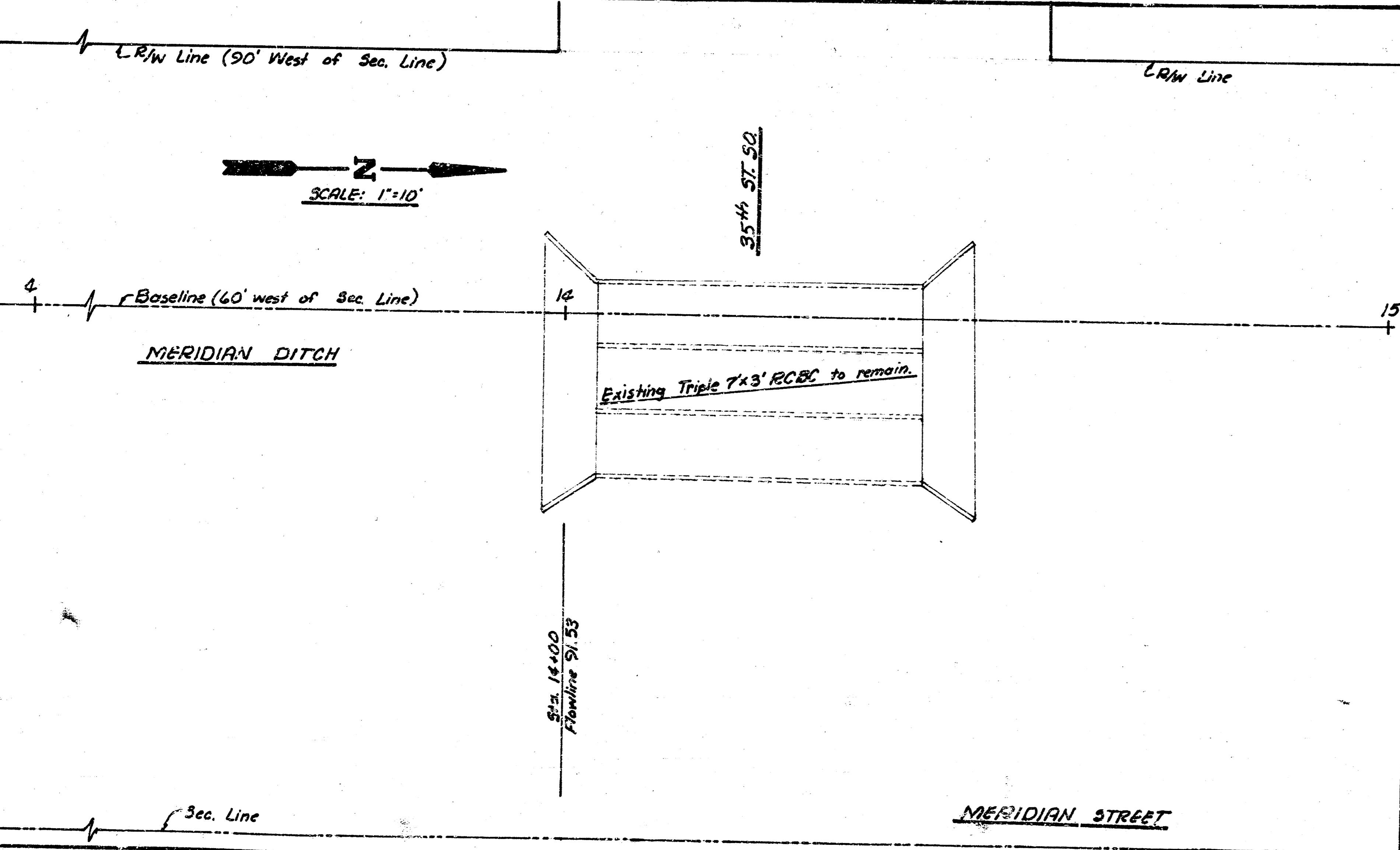
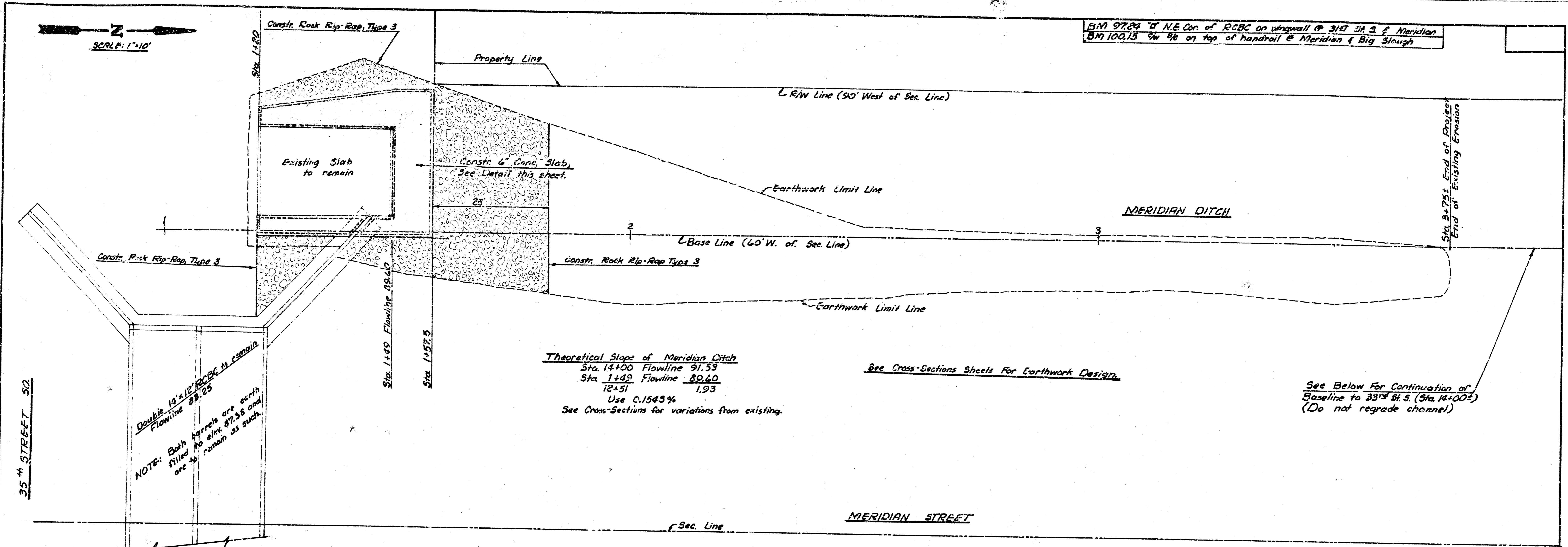


FILMED FROM THE BEST



Rev. 9-8-83

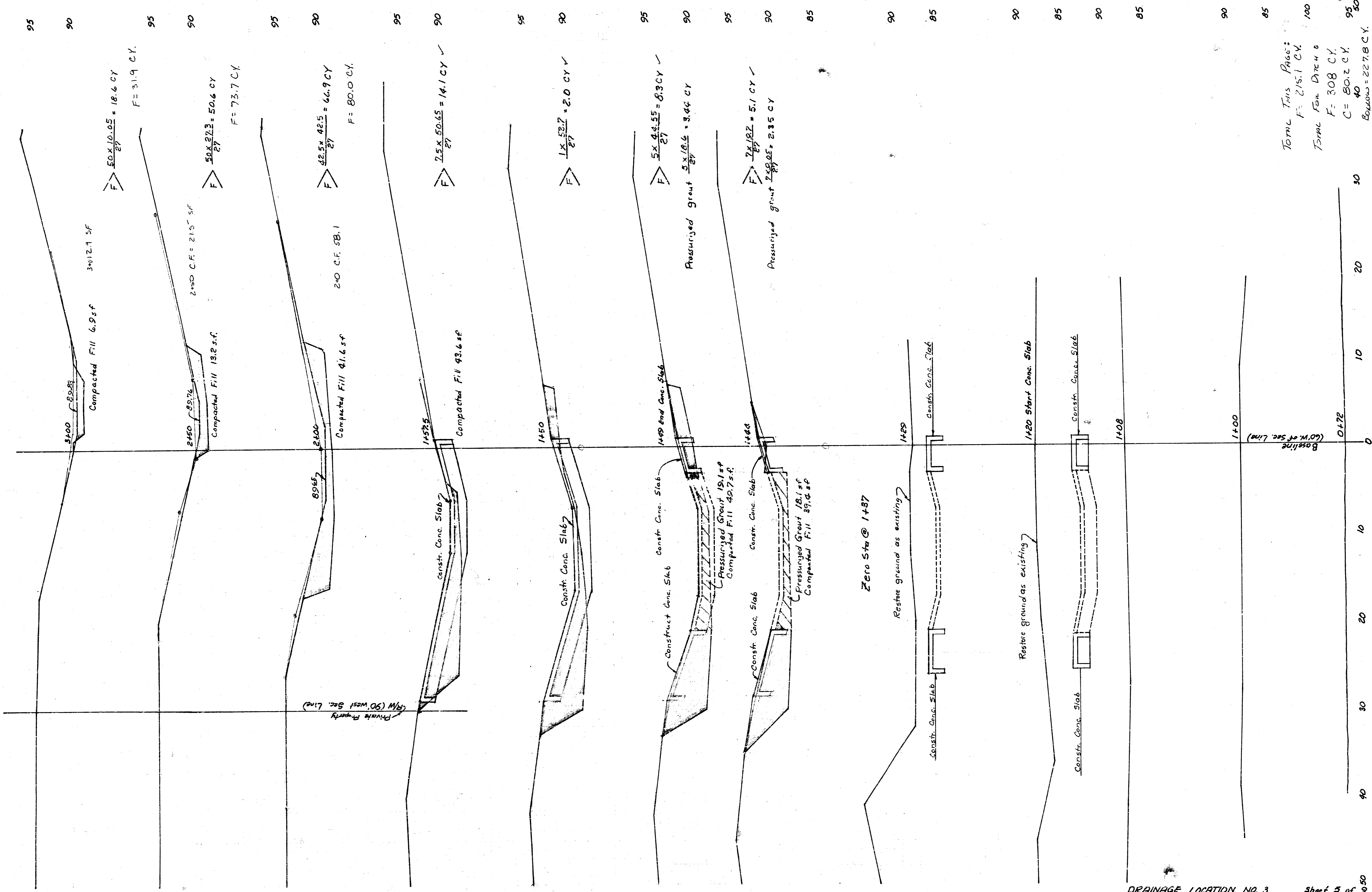
PROJECT DESCRIPTION		
Sunnybrook Drainage Ditch		
RT		
Sheridan Drainage Ditch		
PROJECT NUMBER		
468-76-245-81232-000-000-001		
BOOK NO. LES 20	APPROVED BY	DATE 3-7-83
DRAWN BY W.E.S.		REVISED
CITY OF WICHITA		
DEPARTMENT OF ENGINEERING		
DIRECTOR OF ENGR/CITY ENGINEER		
R. W. BRUGGEMAN		
SCALE 1" = 20'		3
DRAINAGE LOCATION NO. 2		Sheet 3 of 9



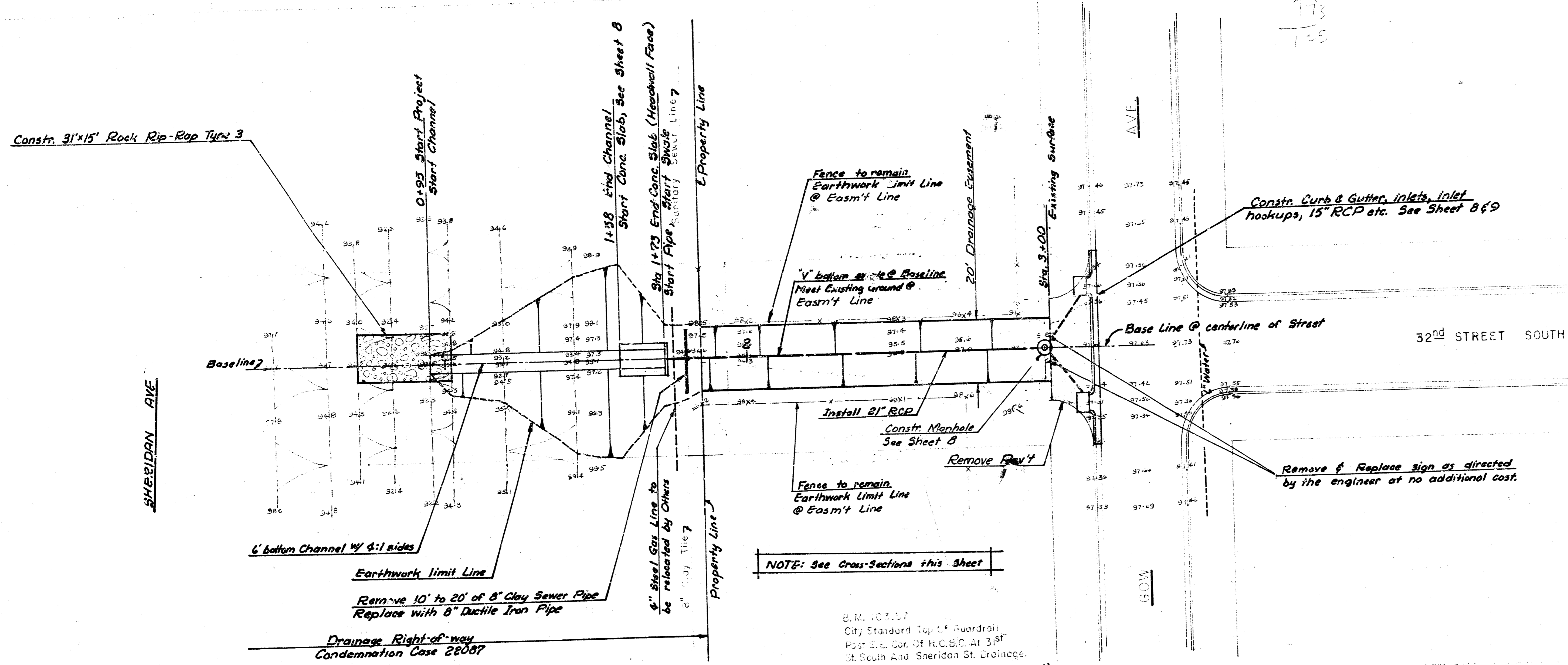
PROJECT DESCRIPTION
RE-CONSTRUCT SWS's

PROJECT NUMBER
448-74-81232-000-000-001 1/1

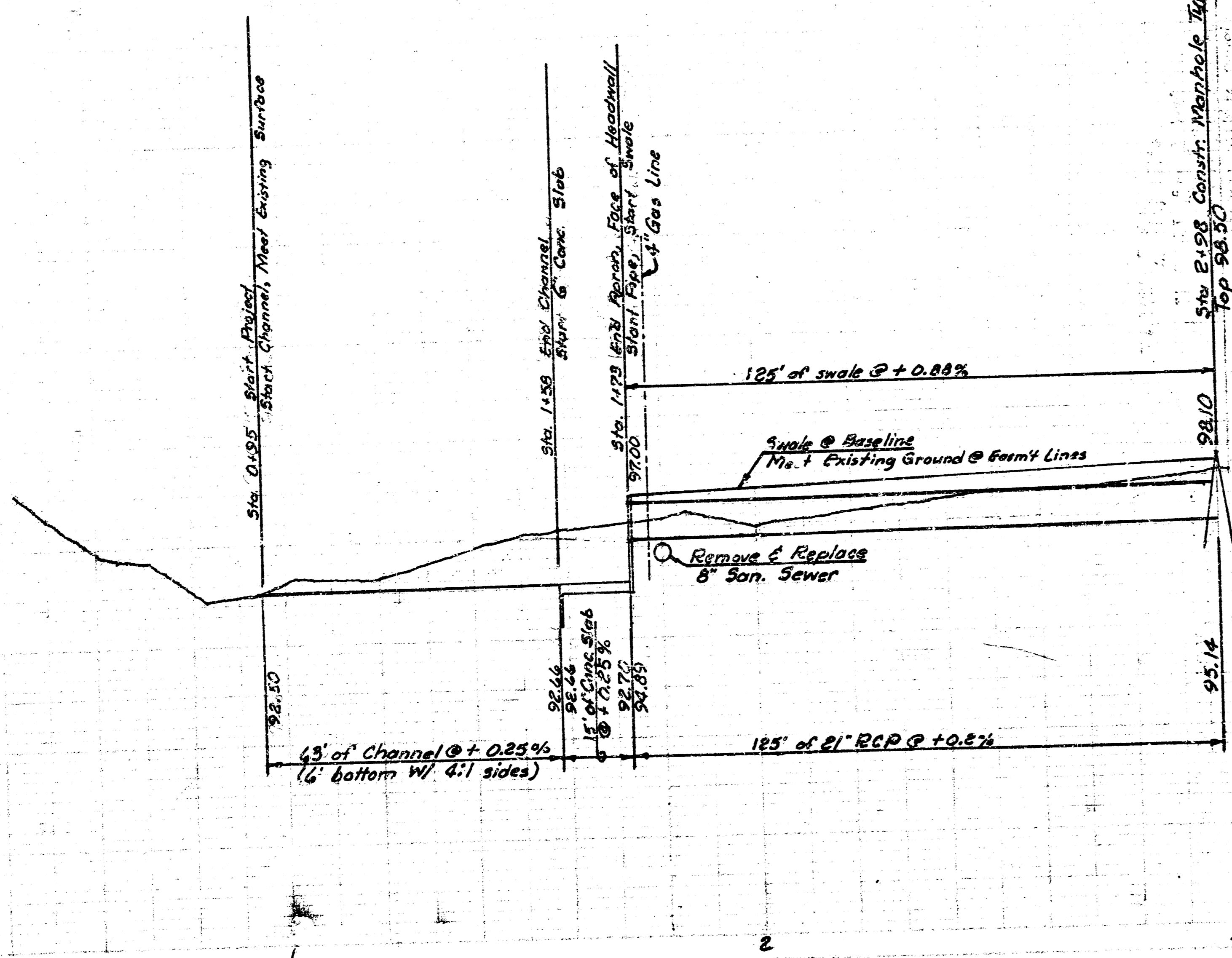
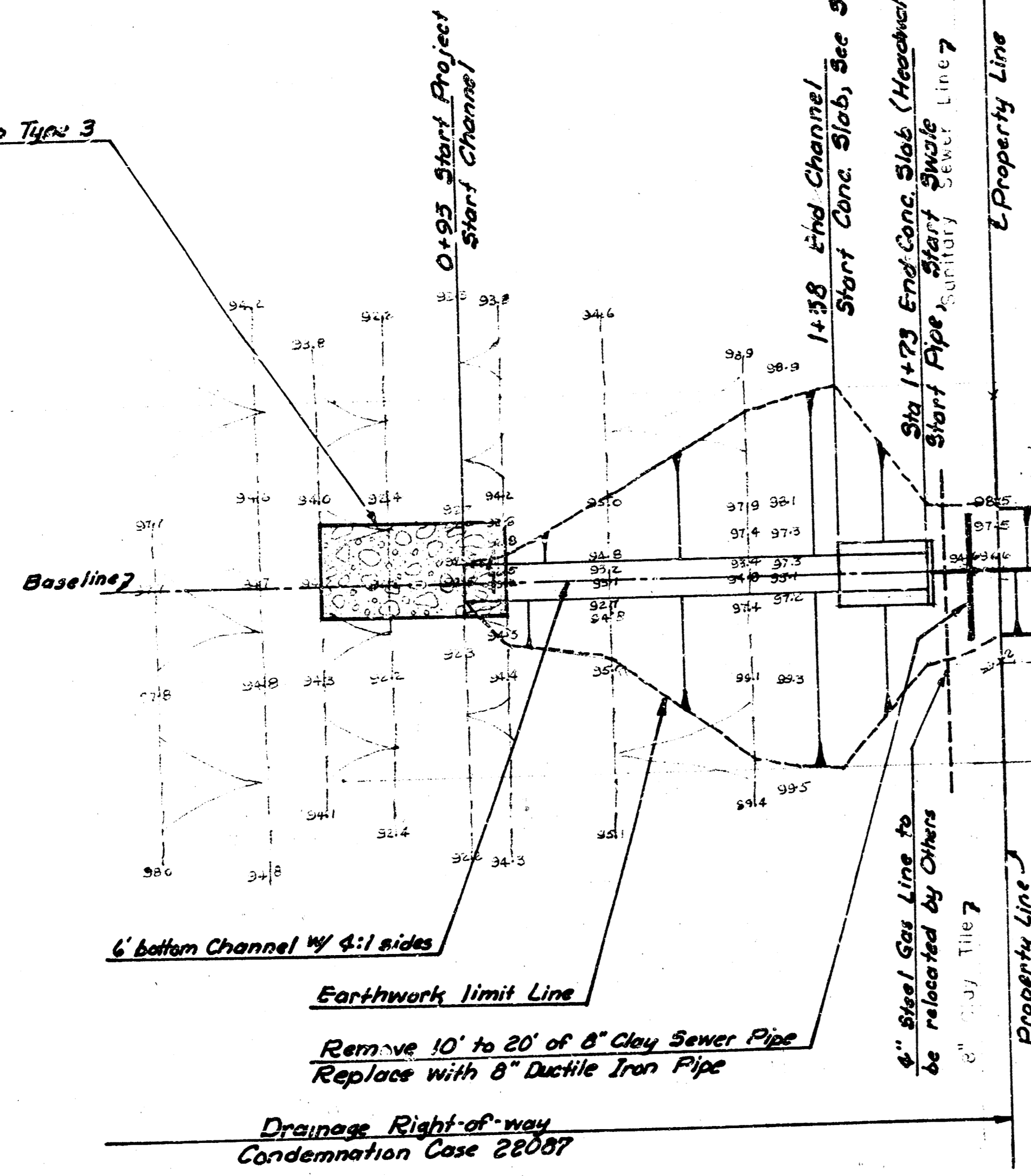
DRAINAGE LOCATION NO. 3 Sheet 4 of 9

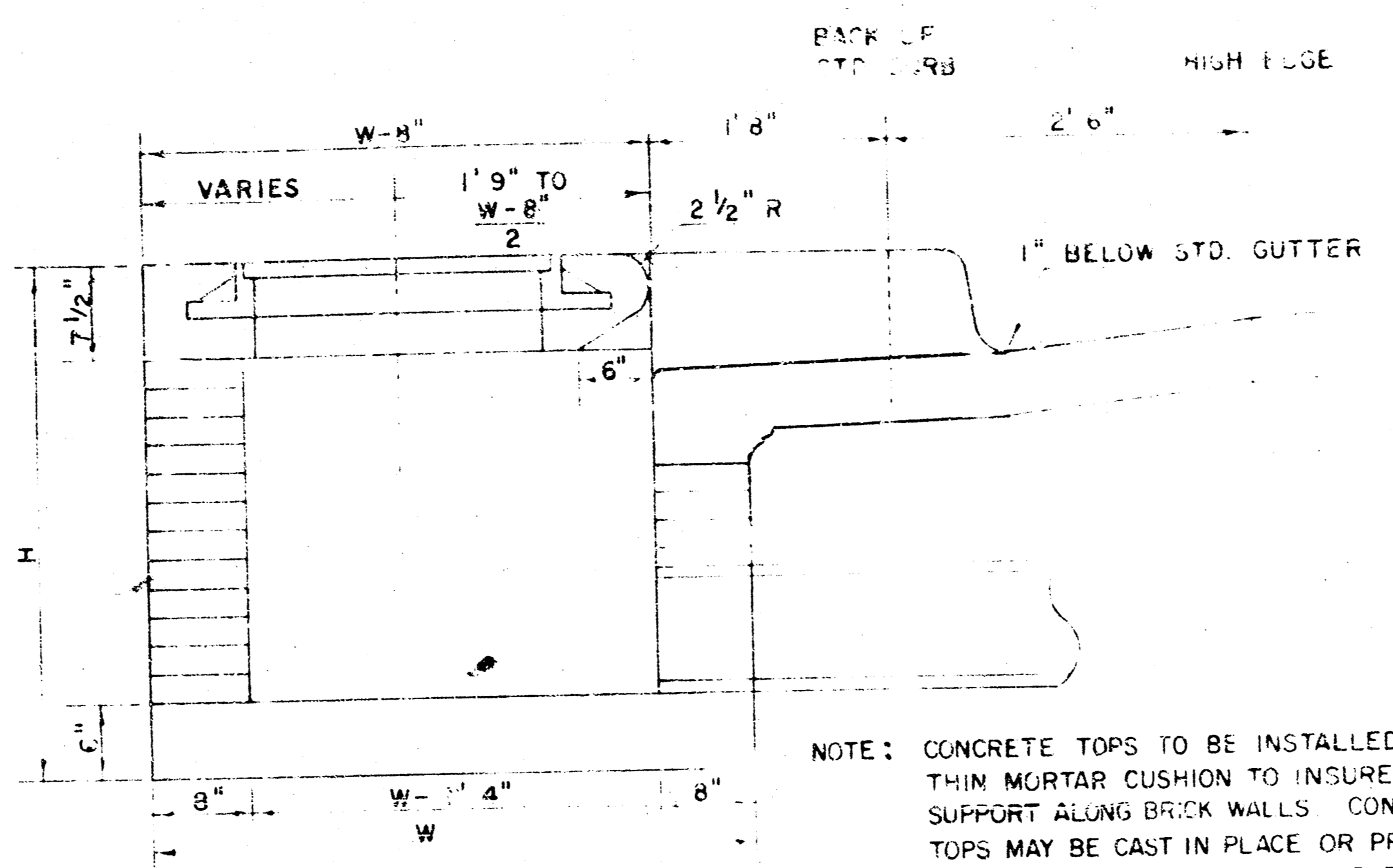
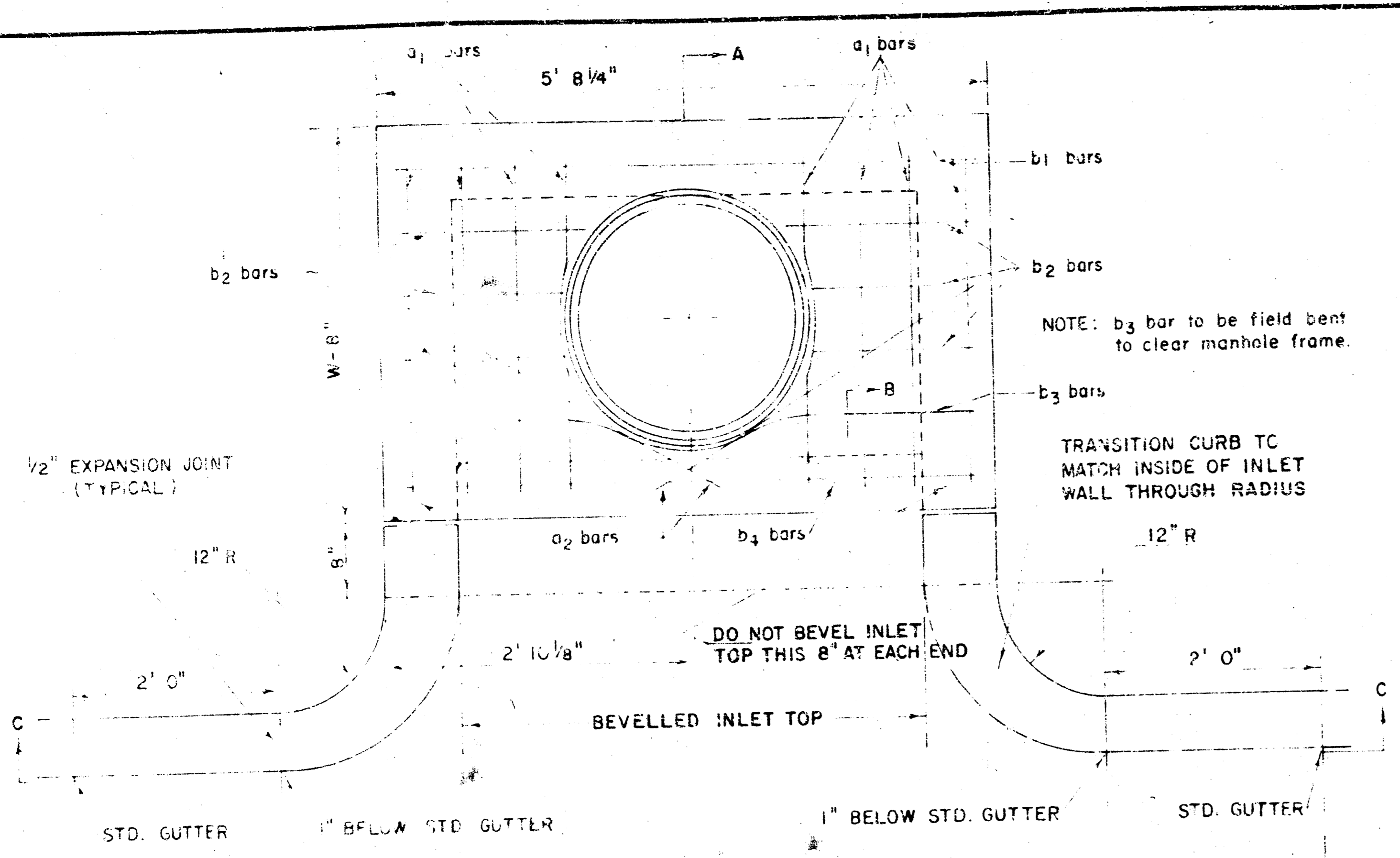


TOTAL THIS PAGE:
 F = 215.1 CY
 TOTAL FOR DRAWING:
 F = 308 CY
 C = 80.2 CY
 BOUNDS = 227.8 CY

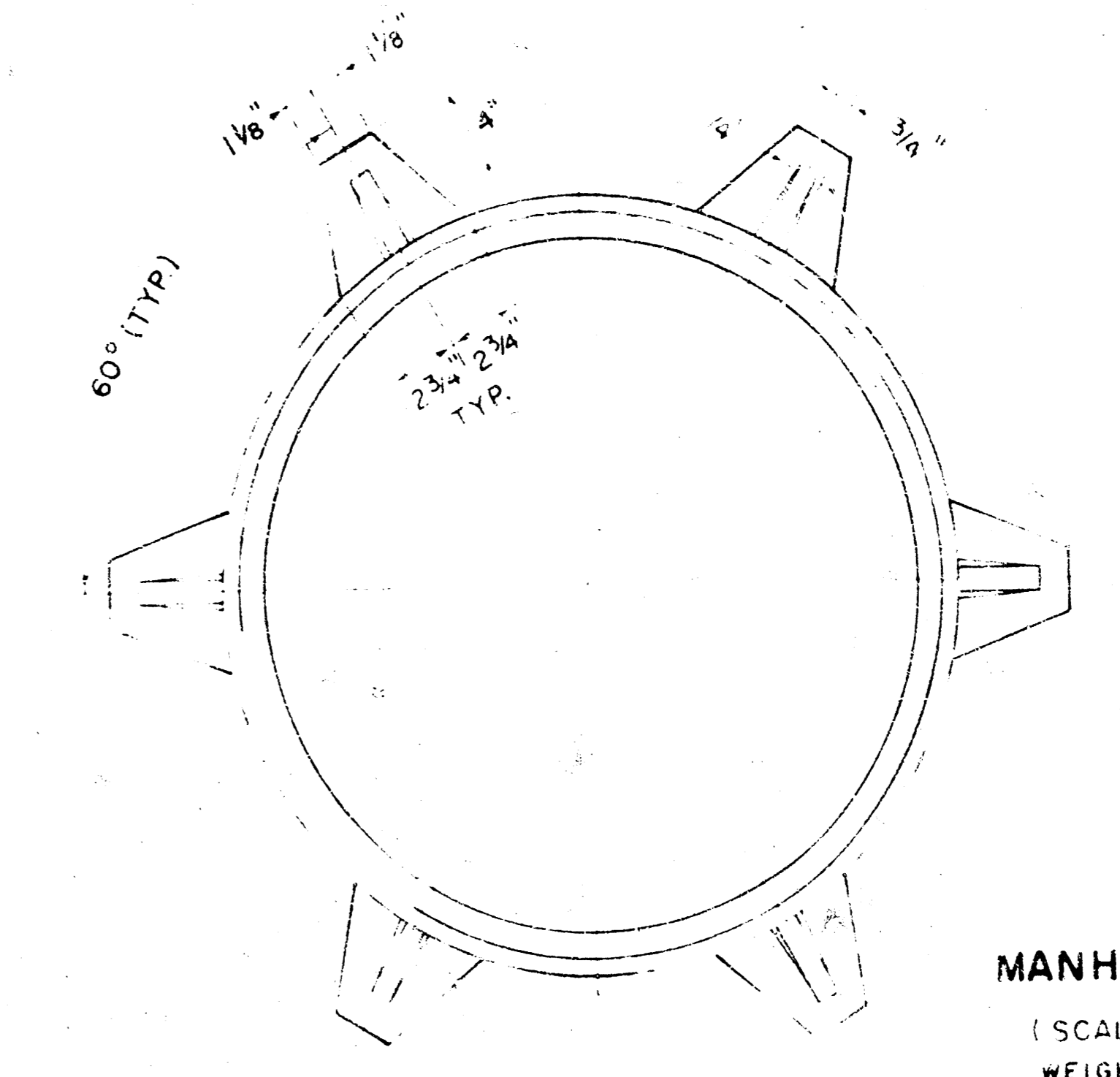


SHERIDAN AVE

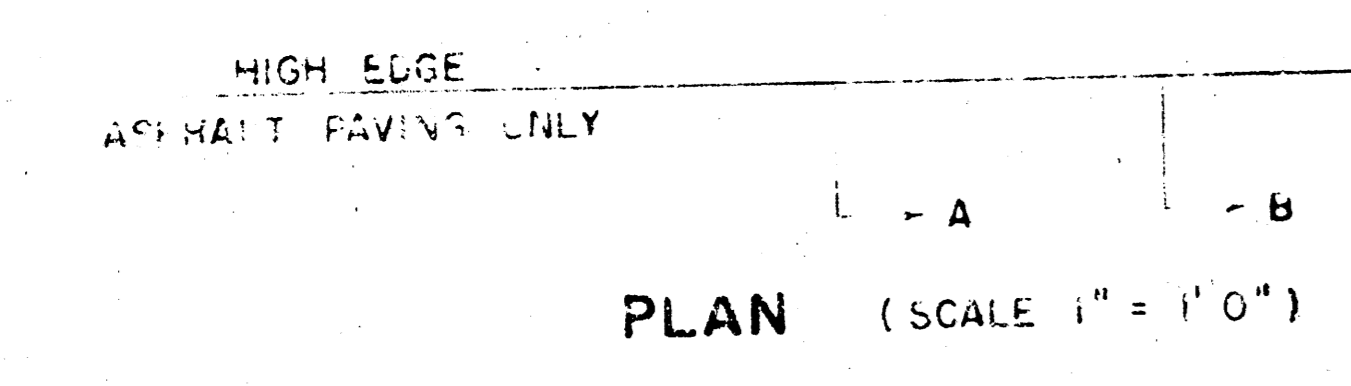




SECTION A-A
(SCALE 1" = 1'0")



MANHOLE FRAME
(SCALE 1" = 6")
WEIGHT = 180 LBS.



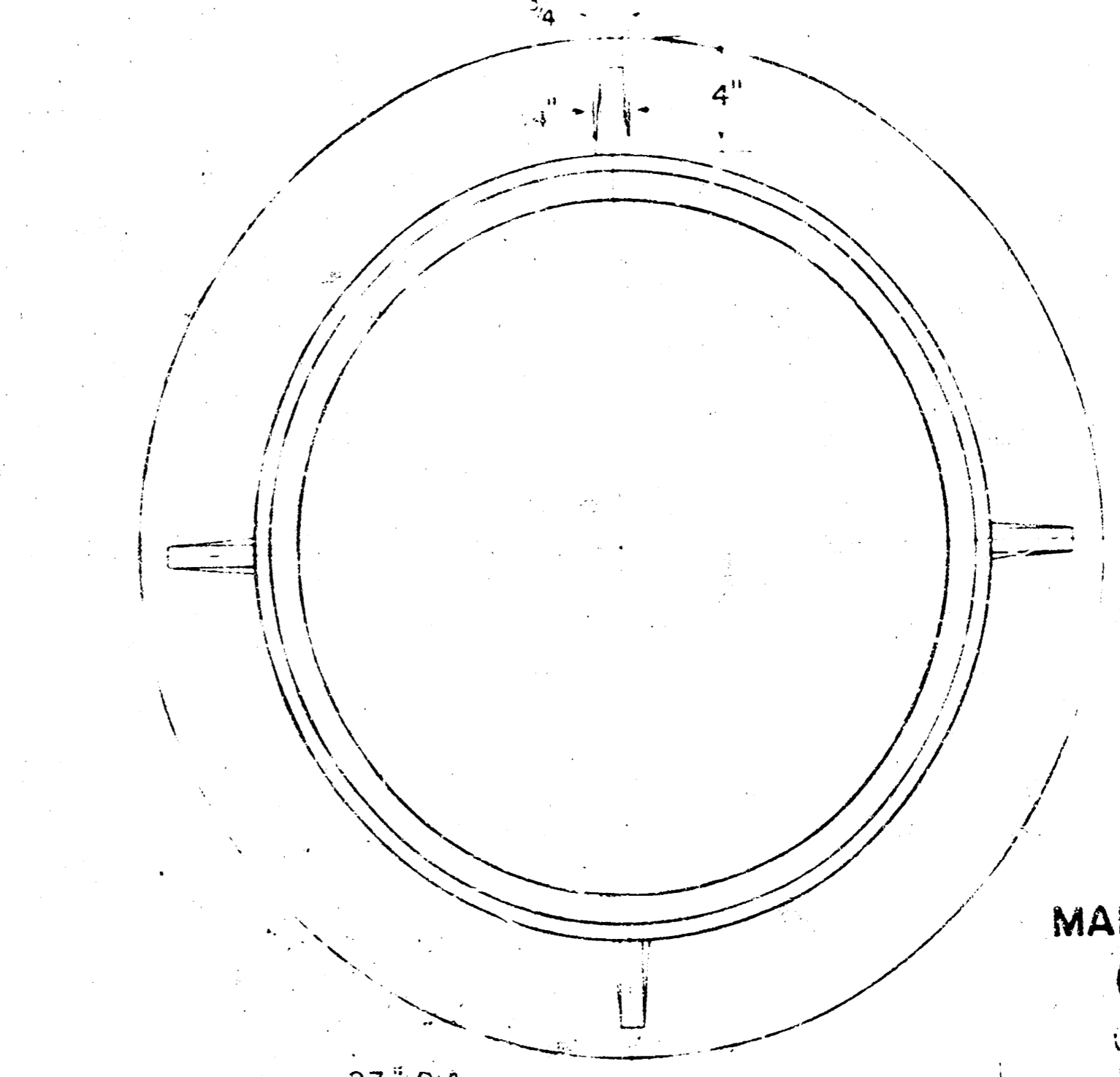
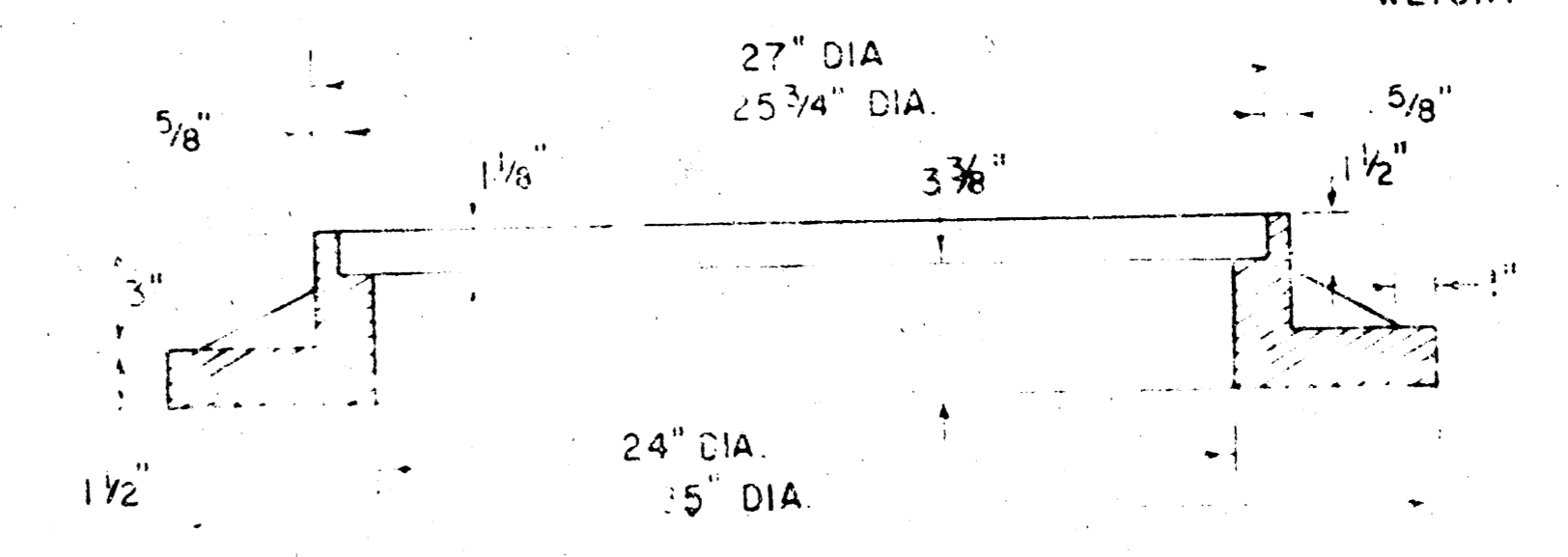
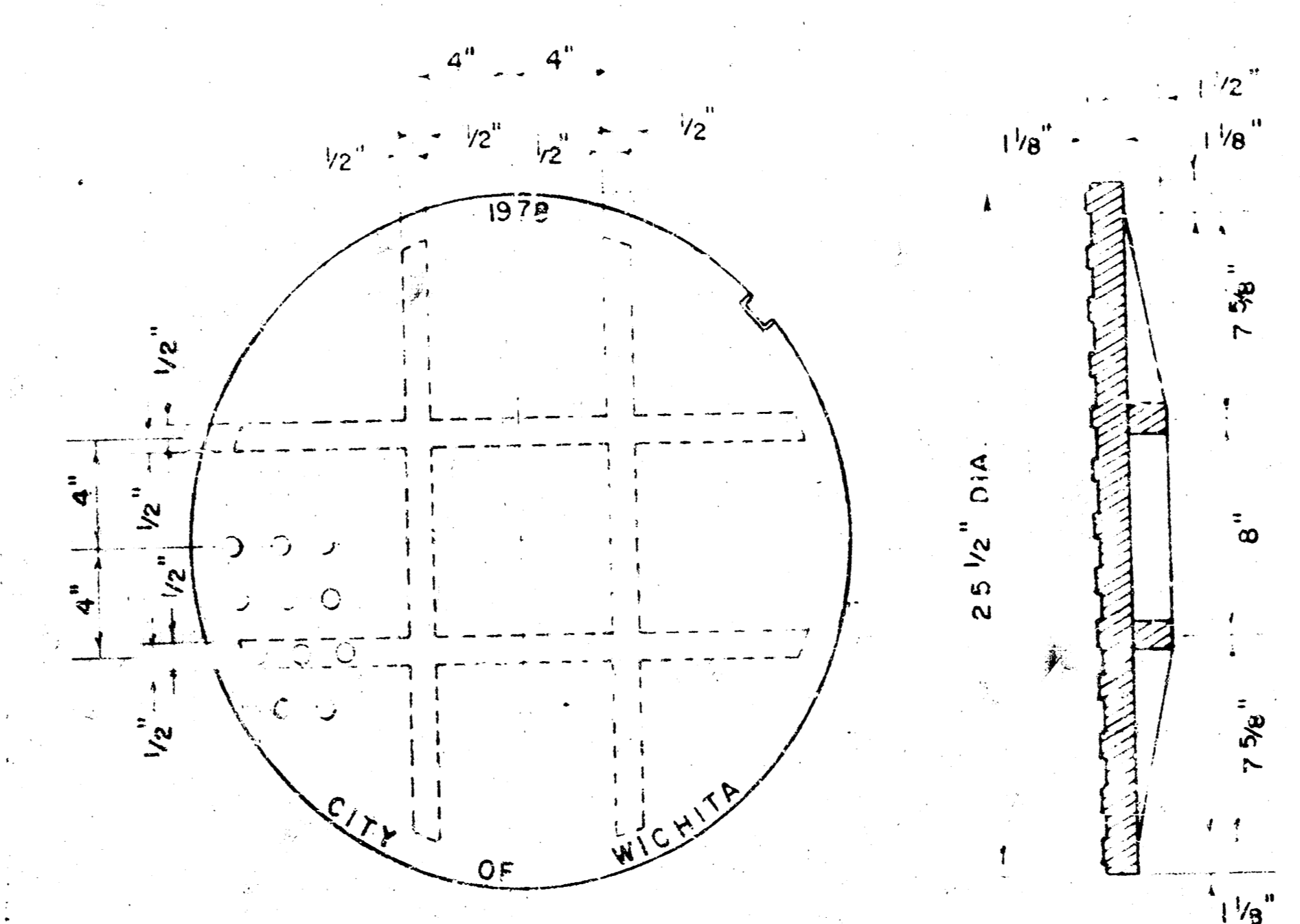
STEEL SCHEDULE

BAR NUMBER	a ₁	a ₂	a ₃	a ₄	a ₅	a ₆	a ₇	a ₈	a ₉	a ₁₀	a ₁₁	a ₁₂	WT. LBS.
1	2	3	4	5	6	7	8	9	10	11	12	13	60"
2	14	15	16	17	18	19	20	21	22	23	24	25	77"
3	26	27	28	29	30	31	32	33	34	35	36	37	97"
4	38	39	40	41	42	43	44	45	46	47	48	49	111"
5	50	51	52	53	54	55	56	57	58	59	60	61	124"

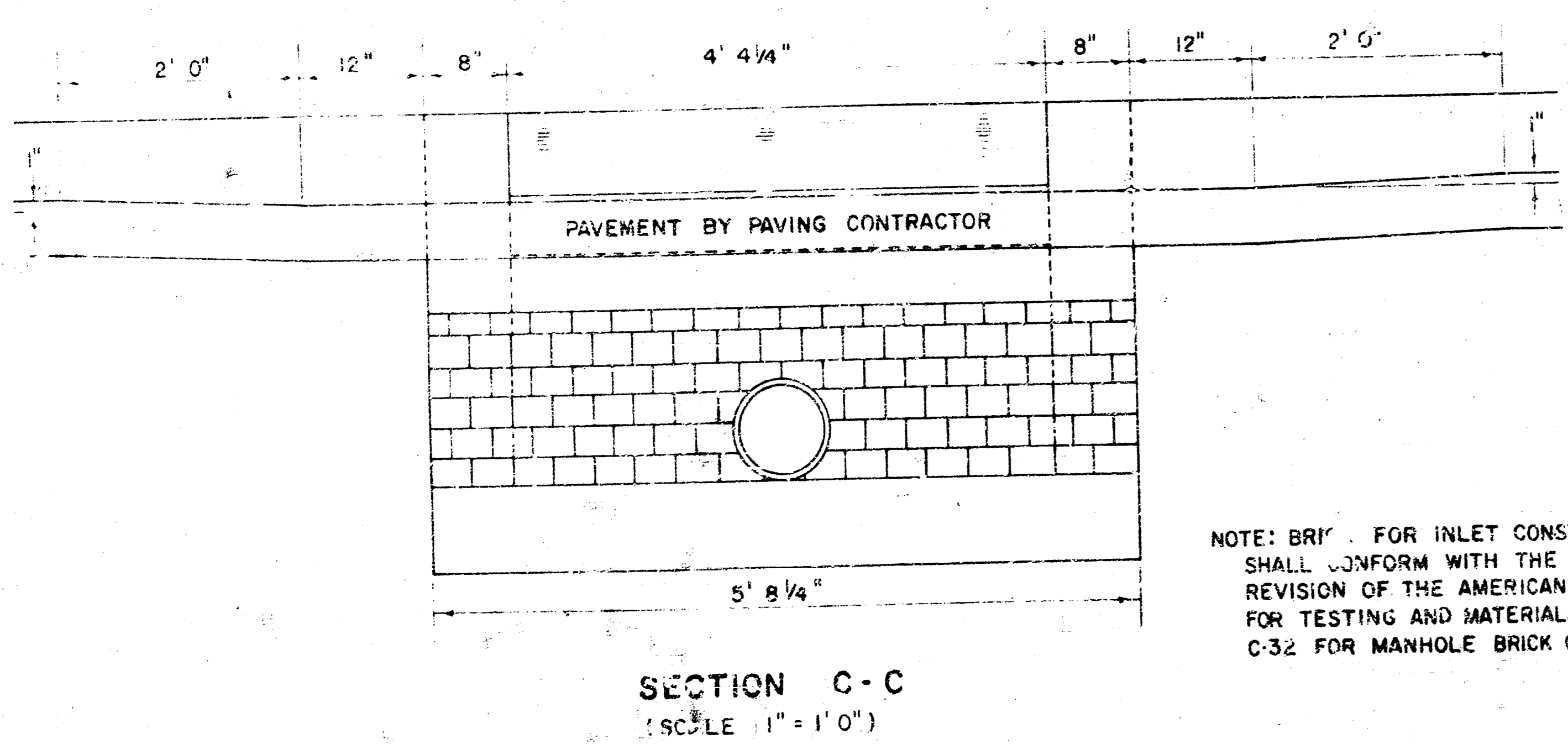
STANDARD CURB INLET PRECAST TOPS

W	PRE-CAST TOP SIZE	PIPE SIZE	CU. YD. CONC.
4' 0"	36" x 5' 8 1/4" x 7 1/2"	21" & SMALLER	0.46 *
5' 0"	44" x 5' 8 1/4" x 7 1/2"	24" & 30"	0.57 *
6' 0"	54" x 5' 8 1/4" x 7 1/2"	36" & 42"	0.71 *
7' 0"	64" x 5' 8 1/4" x 7 1/2"	48" & 54"	0.84 *
8' 0"	74" x 5' 8 1/4" x 7 1/2"	60" & 66"	0.97 *

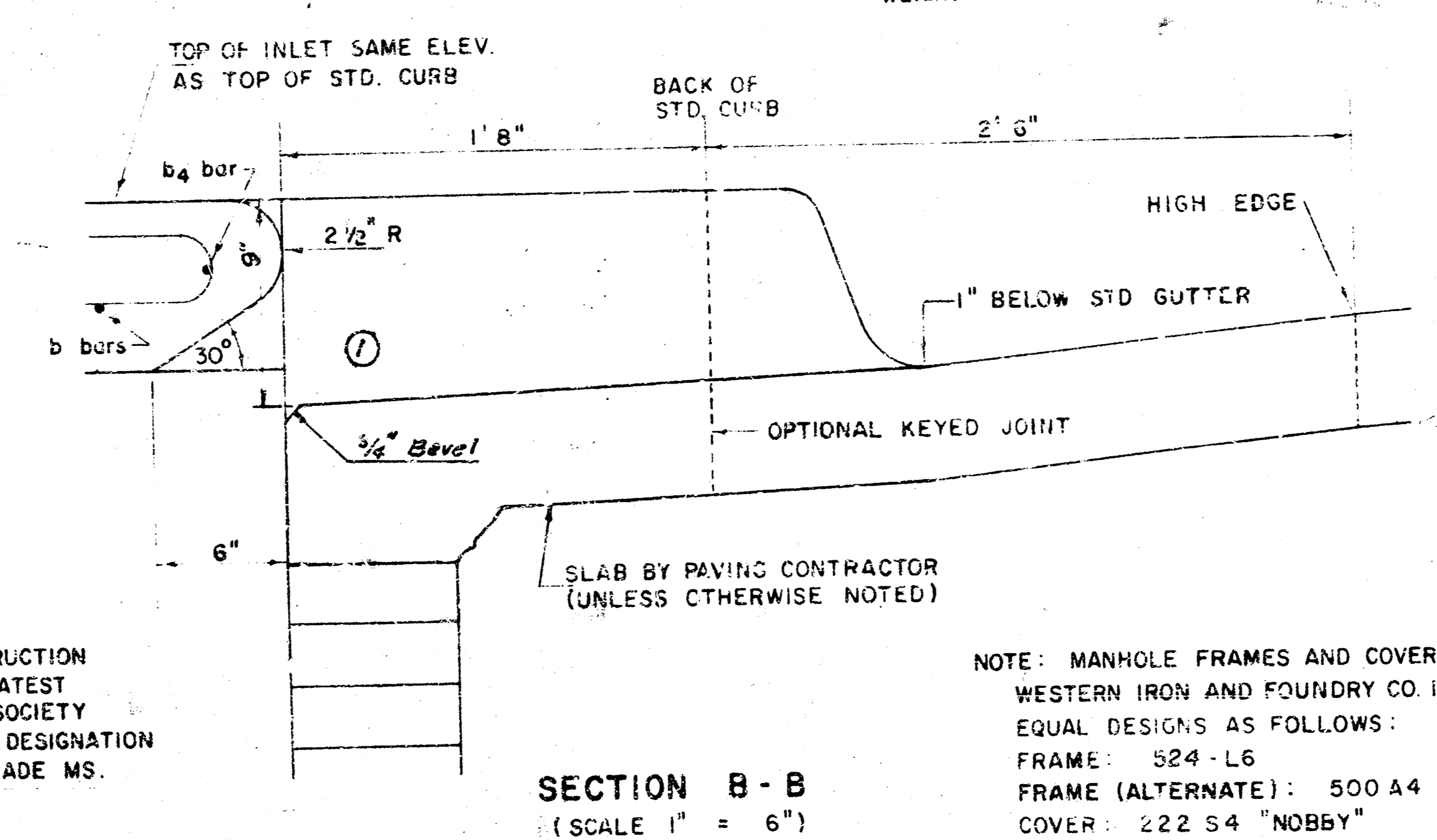
* GROSS VOLUME



MANHOLE FRAME (ALTERNATE)
(SCALE 1" = 6")
WEIGHT = 180 LBS.



NOTE: BRICK FOR INLET CONSTRUCTION SHALL CONFORM WITH THE LATEST REVISION OF THE AMERICAN SOCIETY FOR TESTING AND MATERIALS DESIGNATION C-32 FOR MANHOLE BRICK GRADE MS.



NOTE: MANHOLE FRAMES AND COVER ARE WESTERN IRON AND FOUNDRY CO. INC. OR EQUAL DESIGNS AS FOLLOWS:
FRAME: 524-L6
FRAME (ALTERNATE): 500 A4
COVER: 222 S4 "NOBBY"

1201 Rev. 5-18-81

DETAIL STANDARD TYPE IA CURB INLET

CITY OF WICHITA, KANSAS

R.W. BRUGGEMAN, DIRECTOR OF ENGINEERING/
CITY ENGINEER

JUNE, 1981