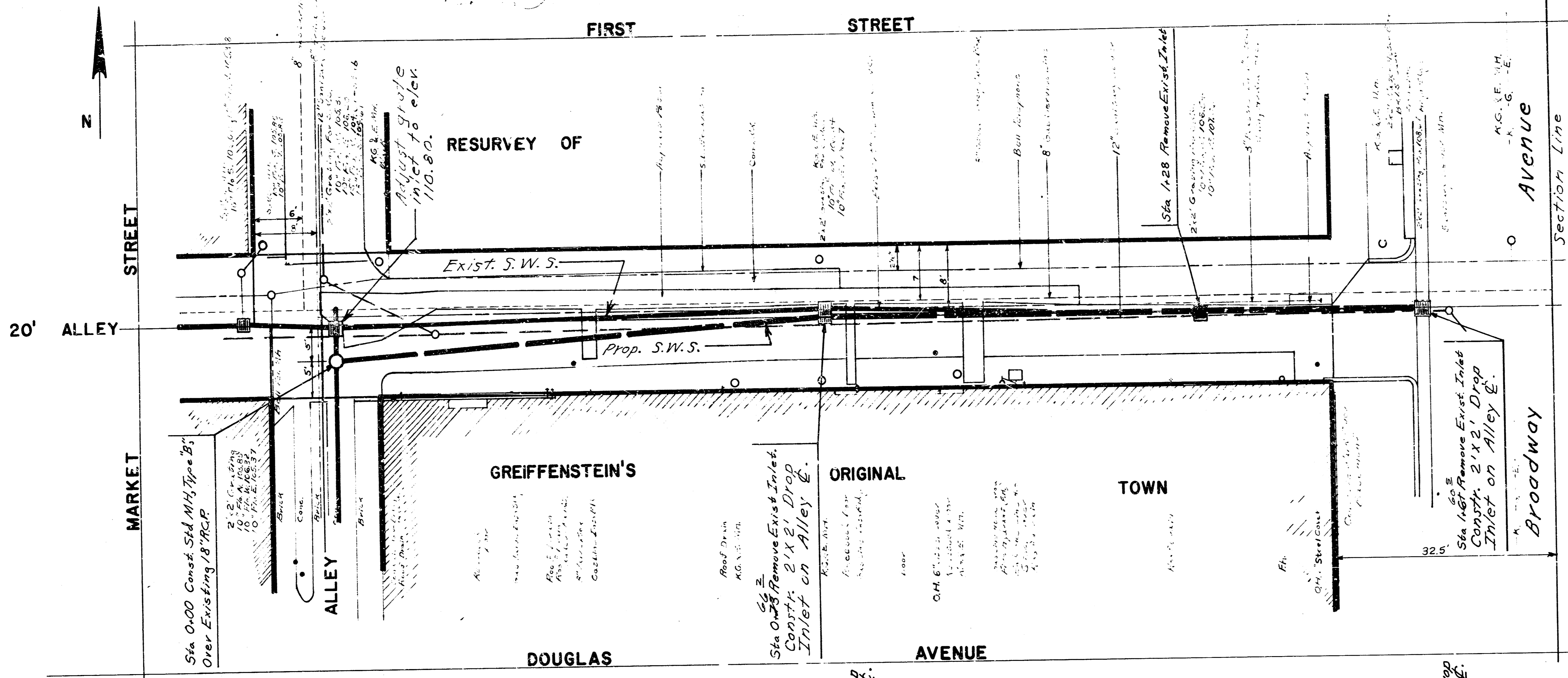


NOTE: EXCESS EXCAVATION FROM SEWER TRENCHES IS TO REMAIN ON PROJECT SITE. EXCESS EXCAVATION SHALL BE UNIFORMLY WINDROWED OVER SEWER TRENCHES.

BM #1 112.93 "D" Cut Top Conc. Retaining Wall On SW Cor. Broadway & First.
 BM #2 112.04 "D" Cut Top Curb SL Alley 1/2 Blk. N of Douglas, 135' E of EL Market.

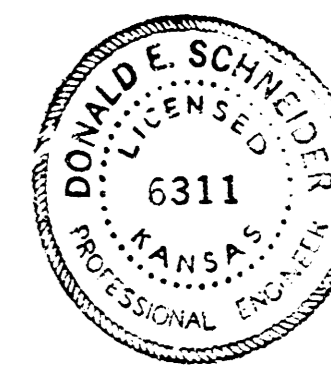
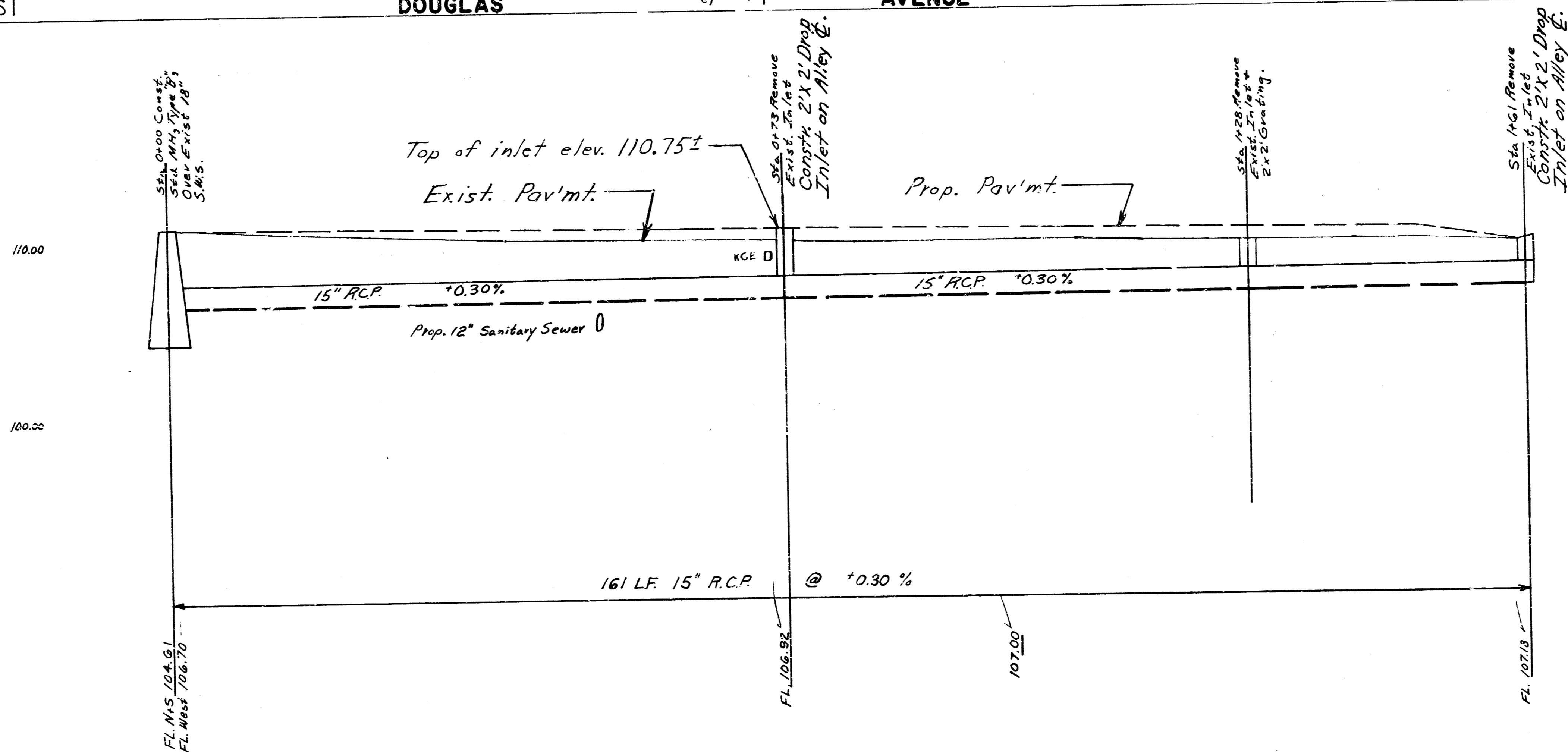


CAUTION
 UNDERGROUND UTILITIES

- Underground Utilities
- Arkla Gas
 - Gas Service
 - Bell Telephone
 - K.G. & E.
 - Storm Water Sewer
 - Sanitary Sewer

NOTE: ALL ACTIVE ROOF DRAIN CONNECTIONS TO THE EXISTING STORM SEWER SHALL BE CONNECTED TO THE NEW STORM SEWER BY THE CONTRACTOR. THIS WORK WILL BE PAID FOR AT THE UNIT PRICE BID FOR ROOF DRAIN CONNECTIONS, WHICH PRICE SHALL INCLUDE THE COST OF ALL MATERIALS, LABOR, PERMITS, AND ANY OTHER NECESSARY INCIDENTALS TO COMPLETE THE WORK IN ACCORDANCE WITH THE CITY OF WICHITA CODE.

Plan Scale: 1"=10'
 Profile Scale: Horizontal: 1"=10'
 Vertical: 1"=5'

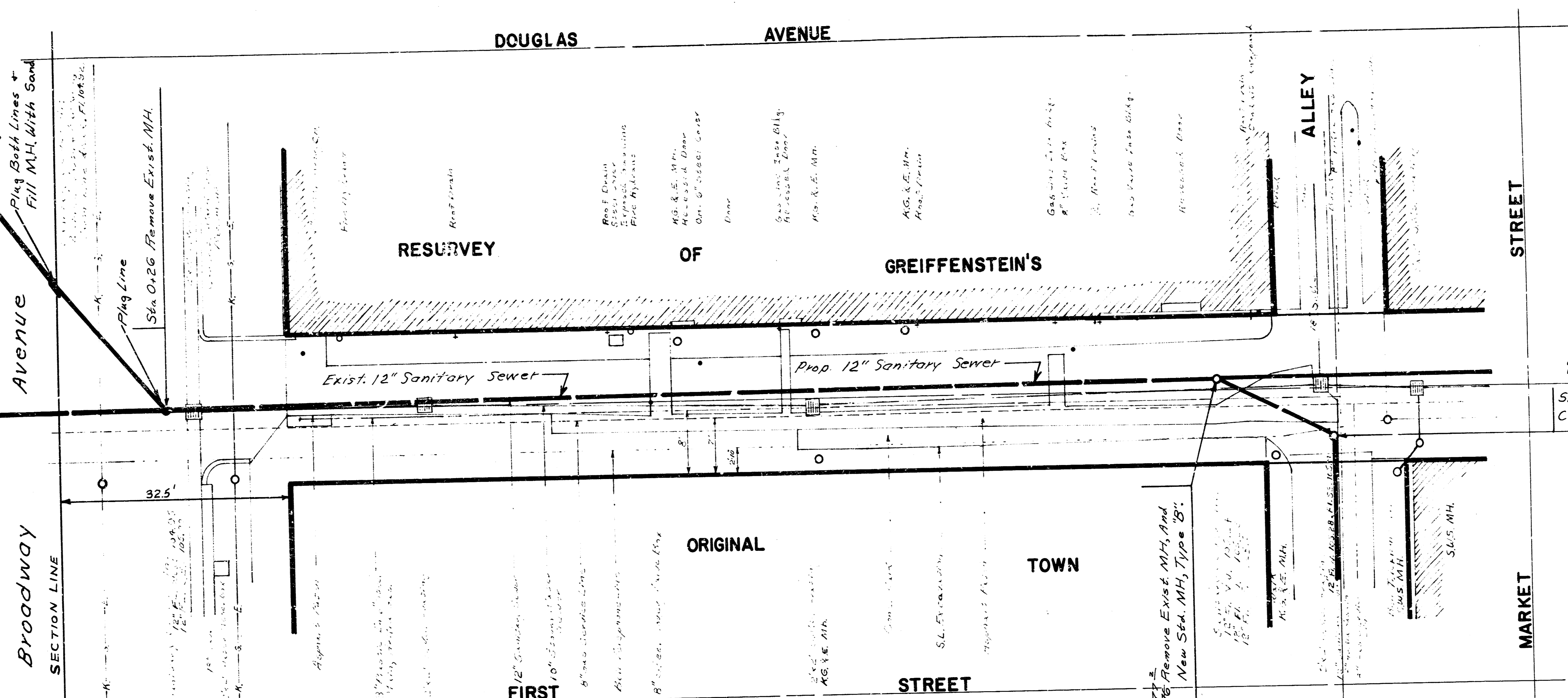


"As Built" Final Meas. 14.80

REBUILDING AND RECONSTRUCTION OF PORTION OF WEST SUBMAIN B, S.S. NO. 1, AND PORTION OF DISTRICT K, STORM WATER SEWER NO. 8, IN THE ALLEY NORTH OF DOUGLAS FROM WEST LINE OF ALLEY WEST OF BROADWAY W.L. BROADWAY.
 CITY OF WICHITA, KANSAS
 R. W. LINN CITY ENGINEER
 DATE: Sept. 1973 SHEET: 1 OF 2
 PROJECT NO. DBKL 572019 1/2

Sta. 0+00 Constr. Std. Brick M.H. Type "B" on exist. 20" Sanitary Sewer.

Underground Utilities
 Arkla Gas
 Gas Service
 Bell Telephone
 Storm Water Sewer
 Sanitary Sewer
 K.G. & E.

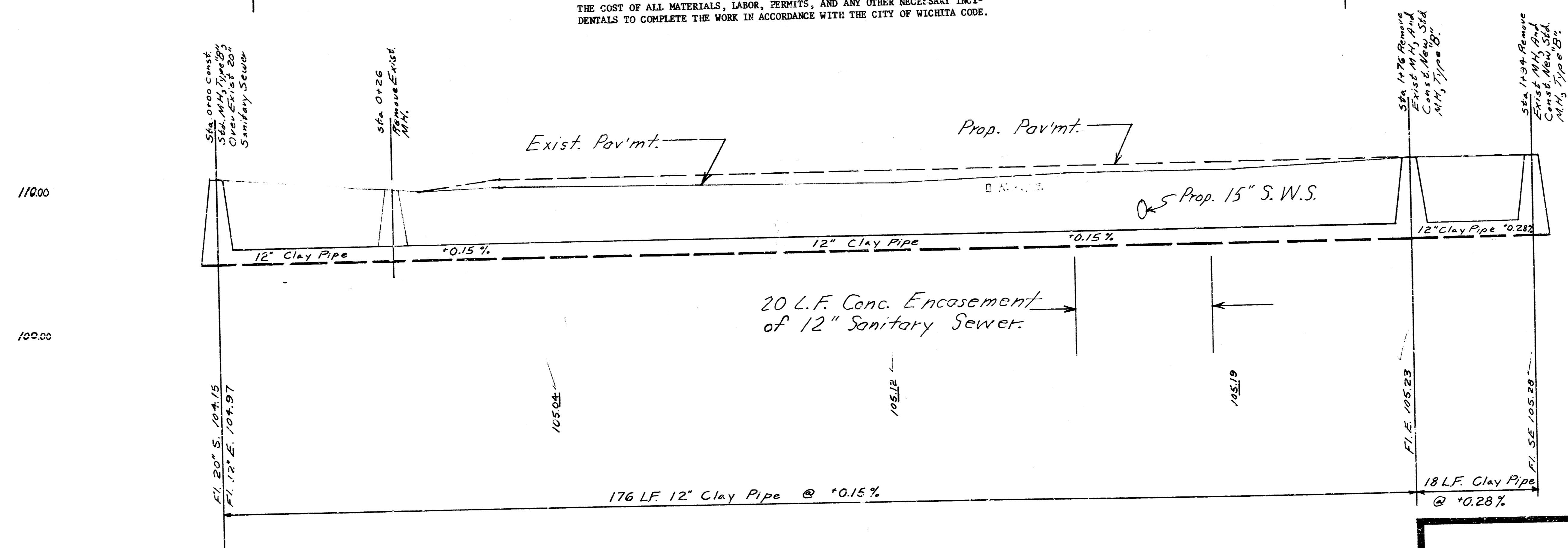


NOTE: ALL ACTIVE EXISTING SANITARY SEWER SERVICE CONNECTIONS ARE TO BE CONNECTED TO NEW SANITARY SEWER BY CONTRACTOR. THIS WORK WILL BE PAID FOR AT THE UNIT PRICE BID FOR SANITARY SEWER CONNECTIONS; WHICH PRICE SHALL INCLUDE THE COST OF ALL MATERIALS, LABOR, PERMITS, AND ANY OTHER NECESSARY INCIDENTALS TO COMPLETE THE WORK IN ACCORDANCE WITH THE CITY OF WICHITA CODE.

CAUTION
 UNDERGROUND UTILITIES
 BEING PROTECTED

20' ALLEY
 Sta. 1+94 Remove Exist. MH, And Const. New Std. MH, Type "B".

Plan Scale: 1"=10'
 Profile Scale: Horiz.: 1"=10'
 Vert.: 1"=5'



DATE: SHEET: 2 OF 2
 PROJECT NO. DBKL 572019

0+00 0+50 1+00 1+50

2/2
 [Handwritten signature]